

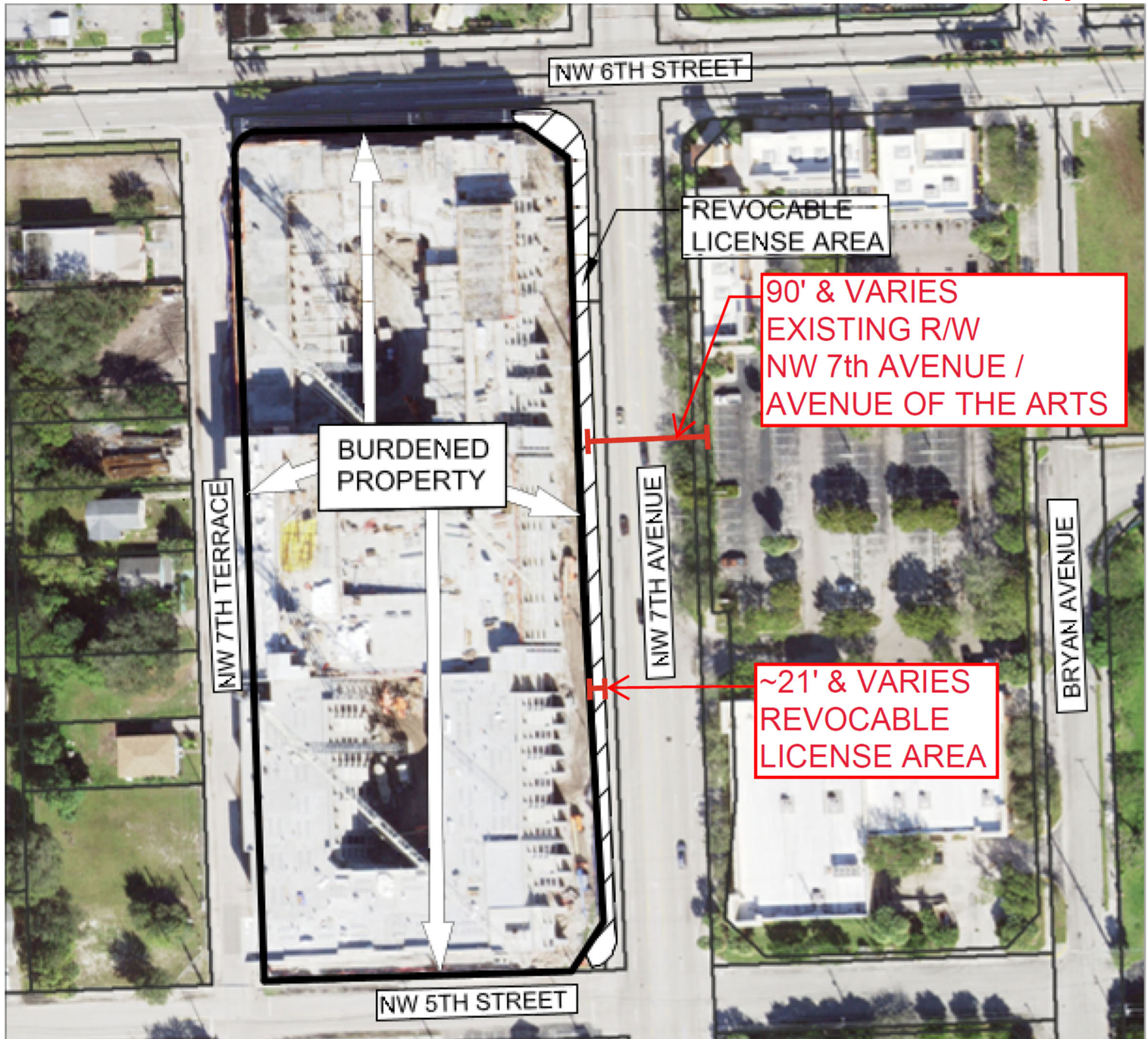
LEGEND:



= REVOCABLE LICENSE AREA



= BURDENED PROPERTY



The Tri-Party RLA/AARLA for this project includes improvements to County right-of-way including the installation of landscaping, irrigation, pavers, and hardscape improvements for approximately 655 LF abutting the east property line of the project on the west side of NW 7th Avenue / Avenue of the Arts. The improvement area is approximately 14,150 SF.

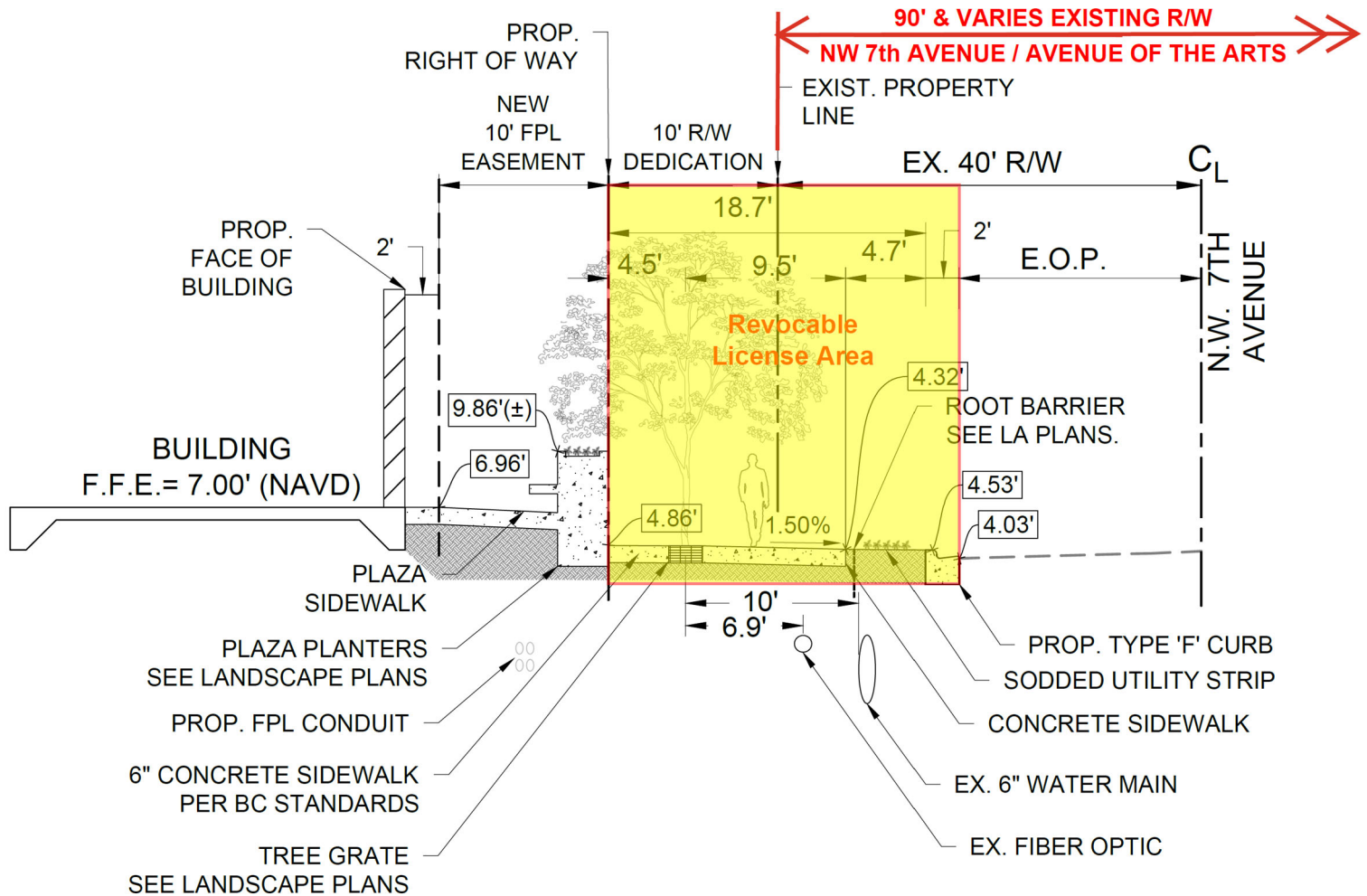
These improvements will be installed under approved County Permit #220810001, a copy of which is on file with the Development Services Department and can be made available upon request.

LICENSE AREA

CAM#25-0802

Exhibit 2

Page 1 of 2



TYPICAL SECTION

NW 7th Avenue / Avenue of the Arts (Looking North)