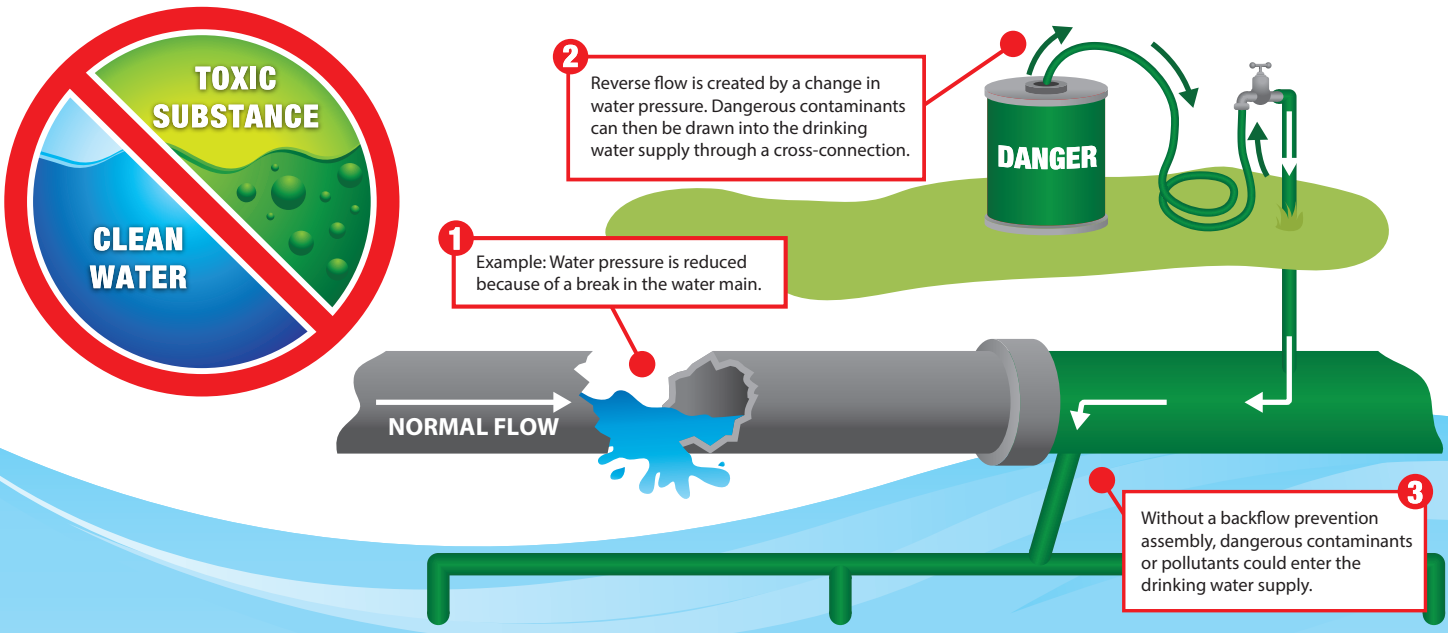


## YOUR ROLE IN PROTECTING OUR WATER SUPPLY FROM CROSS-CONNECTIONS AND BACKFLOW



The City of Fort Lauderdale has a vigilant water quality monitoring program and regularly performs sampling citywide. The City consistently meets all state and federal safety standards for providing clean and safe drinking water.

Once water flows from the water plants and enters the distribution system, our customers also play an important role in assuring that our water supply remains free of contamination.

Property owners are responsible for preventing contaminants and pollutants from entering the water distribution system. Any contaminant or pollutant sources linked to a property owner's water supply can potentially present a hazard to the integrity of the City's water supply.

The Florida Administrative Code Chapter 62 and Section 28-152 through Section 28-157 of City Code requires that the City take measures to protect their systems from cross-connections and backflow. Maintaining a strong Cross-Connection Control Plan (CCCP) is essential to safeguarding the public water supply.

Under the CCCP, the City of Fort Lauderdale is mandated to inspect and monitor certain properties to ensure compliance with cross-connection and backflow prevention requirements.

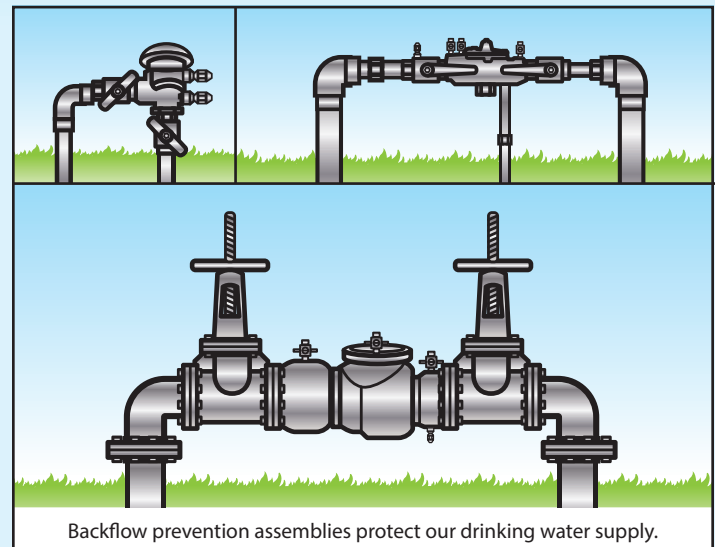
Based on state guidelines, the City is currently identifying and surveying properties with potential hazards.

If it is determined that a backflow prevention assembly is needed, property owners will be notified by mail requesting

compliance. Existing and new backflow prevention assemblies must be tested annually and also after repairs or if devices are relocated.

Licensed contractors must submit plumbing permit applications and approved backflow certification reports to the City of Fort Lauderdale Department of Sustainable Development (DSD).

Keeping our drinking water safe is one of the City's most important public/private partnerships. Our community's continued compliance will provide excellent leadership and strong support for progressive measures to protect public safety.



**For more information, visit [www.fortlauderdale.gov/CCCP](http://www.fortlauderdale.gov/CCCP) or call 954-828-8000.**

# FREQUENTLY ASKED QUESTIONS

## What if I don't comply with local, state and federal mandates?

Your water service will be terminated to protect the public water system.

## What is a cross-connection?

Cross-connection refers to any actual or potential physical connection between a potable water line and any pipe, vessel or machine containing a non-potable fluid or has the possibility of containing a non-potable fluid, solid or gas that could potentially enter the potable water system by backflow.

## What is backflow?

Backflow is the undesirable reversal of flow of water, liquids, mixtures or substances into the public water distribution pipe system from any source or sources.

## When might backflow occur?

Inadequate plumbing and events such as water main breaks or fire hydrant use can contribute to backflow conditions. Backflow may also occur when pressure in the property owner's equipment is greater than the pressure in the drinking water line.

## What is a backflow prevention assembly?

Backflow prevention assemblies are designed to prevent contaminated water or chemicals from a property flowing back into the public drinking water supply system.

## Why are backflow prevention assemblies required?

Backflow prevention assemblies are an important component of the City's drinking water protection program and are legally mandated under Florida rules for those water service lines identified as posing a risk to the public water supply.

## Who is affected?

Certain types of businesses or service connections are

legally mandated to install and operate approved backflow prevention assemblies. Examples include drycleaners, car washes, restaurants, barber shops and beauty salons, auto repair shops, funeral parlors, medical offices, and contractors. Buildings greater than four stories, fire, and irrigation services are also required to have a backflow prevention assembly.

## What is the cost of backflow prevention assemblies?

Installation costs vary depending on the assembly and selected licensed plumbers' labor costs. The City also requires a plumbing permit to test and install these devices. The investment to install and maintain the assembly is minimal compared to the potential public safety hazard and liability of a backflow incident. It is a State requirement in order to protect the potable water supply for everyone.

## Who can install and test a backflow prevention assembly?

Backflow prevention assemblies may only be tested or installed by a licensed plumber who is also a certified backflow technician. A list of licensed plumbers may be obtained from the Department of Sustainable Development Building Services website at: [http://www.fortlauderdale.gov/building\\_services/Fax%20Permitting/permits.htm](http://www.fortlauderdale.gov/building_services/Fax%20Permitting/permits.htm)

**Property owners shall notify the City before altering or adding new devices to the plumbing system to help reduce cross-connection:**

The Department of Sustainable Development  
700 NW 19th Avenue | Fort Lauderdale, FL 33311-7834  
Phone: 954-828-5260

## Additional website resources:

### State of Florida:

[www.dep.state.fl.us/water/drinkingwater/bfp.htm](http://www.dep.state.fl.us/water/drinkingwater/bfp.htm)

### Broward County:

[www.broward.org/WaterServices/Pages/BackflowCertification.aspx](http://www.broward.org/WaterServices/Pages/BackflowCertification.aspx)

**For more information, visit [www.fortlauderdale.gov/CCCP](http://www.fortlauderdale.gov/CCCP) or call 954-828-8000.**

