



FLORIDA ATLANTIC UNIVERSITY

**Map Alternatives for the City of Fort Lauderdale
City Commission Meeting – 1st Reading**

April 5, 2022



Outline

- The FAU Redistricting Team
- Redistricting Parameters/City Charter
- Existing Districts
- 2020 Enumeration and 2023 Population Projection
- Map Alternatives
- Summary
- Timeline



FAU Redistricting Team

- Steven C. Bourassa, Ph.D.
 - Professor and Chair, Department of Urban and Regional Planning
- James Gammack-Clark, M.A., Ph.D. candidate (ABD)
 - Senior Instructor, Department of Geosciences
- Ronald R. Schultz, Ph.D.
 - Professor Emeritus, Department of Geosciences
- Michael Stamm, Jr., MURP
 - Adjunct Faculty, Department of Urban and Regional Planning



Redistricting Parameters

- City Charter:
 - *“the city commission shall, by ordinance, adopt, create and establish four (4) separate and distinct geographical commission districts...”*
 - *...[These] shall be of contiguous territory and as approximately equal in population as is practicable...*
 - *... noncontiguous parcel(s) shall either be made part of one (1) of the districts... or if such parcel(s) has a population approximately equal to the other commission districts to be created, then such parcel(s) may be a commission district...*
 - *...After... each decennial census, the city commission shall reestablish the boundaries of the four (4) commission districts so that the districts shall be as approximately equal in population as is practicable.”*



Redistricting Parameters

- The following guide our efforts:
 1. Reasonable population equality across districts
 - A maximum 10% overall deviation from the ideal size across districts.
 - Adhere to Section 2 of the Voting Rights Act of 1965: Arbitrary dilution of minority population clusters and other discriminatory practices are prohibited.
 2. Geographic contiguity and appropriate compactness
 - Follow major natural and manmade boundaries where possible.
 - Respect for the integrity of communities of interest.
 - Minimize the degree of change in pre-existing patterns of districts.
- Population equality is of primary importance
 - The others are significant in guiding decisions towards reaching reasonable population balance.

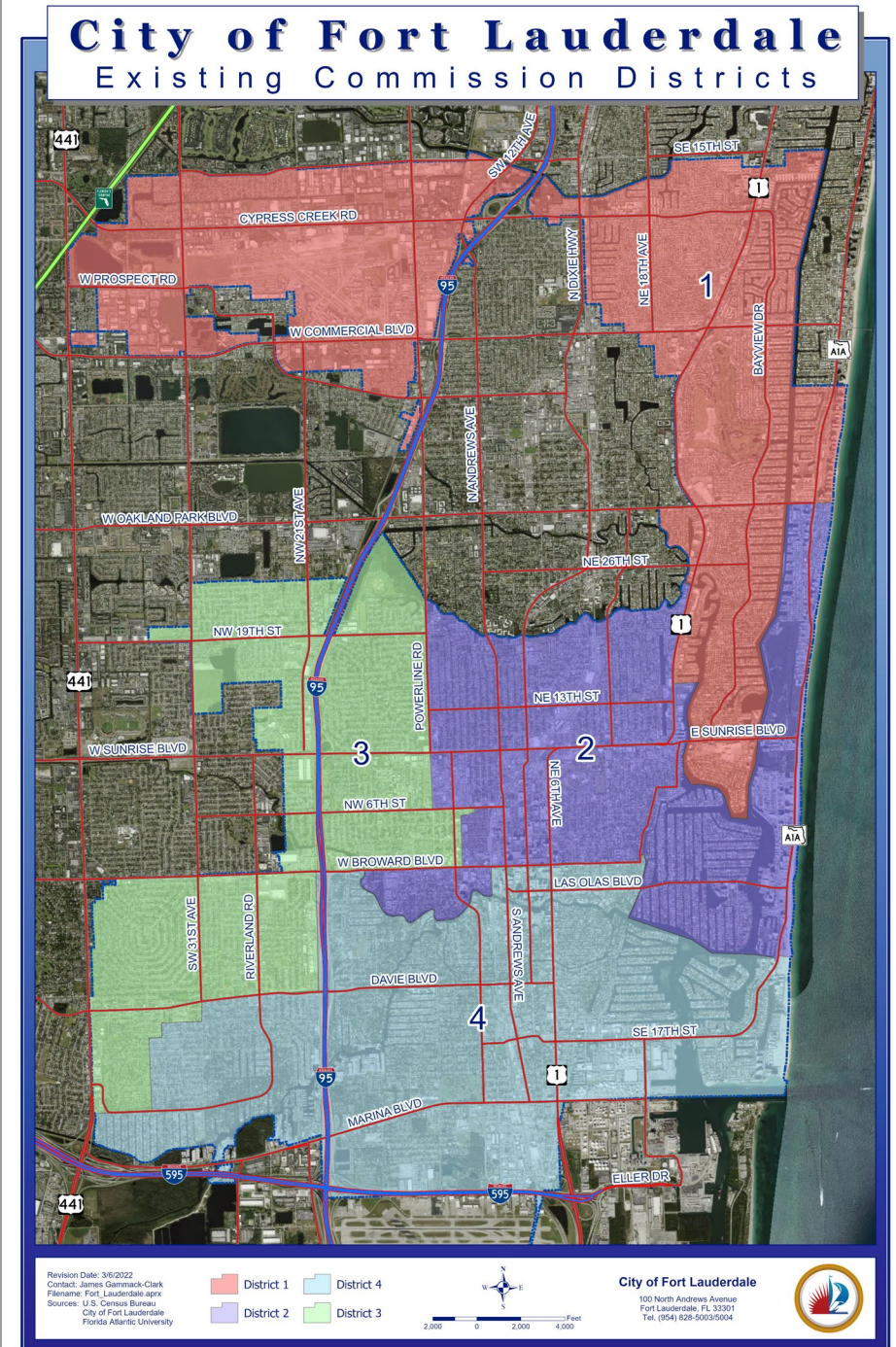


Data

- U.S. Census Bureau's 2020 Census Redistricting Summary Files [Public Law 94-171]:
 - Resident population counts by census block
 - The smallest enumeration unit possible
 - Aggregated to form each of the four voting districts
- Housing data provided by the City of Fort Lauderdale
 - From which population estimates were derived to account for new housing, scheduled for construction by January of 2023



- 2020 US Census Blocks:
 - The population of the City of Fort Lauderdale is 182,760
 - Average population for each district is 45,690
- 2023 population projection :
 - Staff Identified Projects that will be Constructed/Occupied between April 2020 and January 2023
 - Projection used to evaluate future population equity.
 - 11,955 person increase
 - The population of the City of Fort Lauderdale will be **194,715**
 - Average population for each district will be **48,679**





2020 Enumeration and 2023 Population Projection

Current Districts	2020 Population	% of City	Deviation From Average	2023 Population Projection	% of City	Deviation From Average
District 1	42,148	23.06	-7.75%	42,614	21.89	-12.46%
District 2	47,921	26.22	4.88%	49,765	25.56	2.23%
District 3	44,605	24.41	-2.37%	45,845	23.54	-5.82%
District 4	48,086	26.31	5.24%	56,491	29.01	16.05%
Total	182,760	100	20.25%	194,715	100	36.56%
Average	45,690	25	5.06%	48,679	25	9.14%



2020 Enumeration and 2023 Population Projection

- Largest District: 4 at 56,491 people
 - 7,812 (16.05%) more than the theoretical average
- Smallest District: 1 at 42,614 people
 - 6,065 (12.46%) less than the theoretical average

Current Districts	2020 Population	% of City	Deviation From Average	2023 Population Projection	% of City	Deviation From Average
District 1	42,148	23.06	-7.75%	42,614	21.89	-12.46%
District 2	47,921	26.22	4.88%	49,765	25.56	2.23%
District 3	44,605	24.41	-2.37%	45,845	23.54	-5.82%
District 4	48,086	26.31	5.24%	56,491	29.01	16.05%
Total	182,760	100	20.25%	194,715	100	36.56%
Average	45,690	25	5.06%	48,679	25	9.14%



2020 Enumeration and 2023 Population Projection

- The current Commission Districts are heavily unbalanced
 - Total Deviation of 36.56% between all four districts
 - Spread = 28.51% (16.05% + 12.46% between highest and lowest districts)
 - Exceeding max. 10% overall deviation from the ideal size across districts

Current Districts	2020 Population	% of City	Deviation From Average	2023 Population Projection	% of City	Deviation From Average
District 1	42,148	23.06	-7.75%	42,614	21.89	-12.46%
District 2	47,921	26.22	4.88%	49,765	25.56	2.23%
District 3	44,605	24.41	-2.37%	45,845	23.54	-5.82%
District 4	48,086	26.31	5.24%	56,491	29.01	16.05%
Total	182,760	100	20.25%	194,715	100	36.56%
Average	45,690	25	5.06%	48,679	25	9.14%



2020 Enumeration and 2023 Population Projection

- As a product of the city’s rapid growth since 2020
 - When the population balance was already imbalanced
 - The mean deviation has increased significantly (5.06% to 9.14%)
 - While the spread has more than doubled (12.99% to 28.51%)
 - If this pace continues, redistricting may be again necessary prior to 2030

Current Districts	2020 Population	% of City	Deviation From Average	2023 Population Projection	% of City	Deviation From Average
District 1	42,148	23.06	-7.75%	42,614	21.89	-12.46%
District 2	47,921	26.22	4.88%	49,765	25.56	2.23%
District 3	44,605	24.41	-2.37%	45,845	23.54	-5.82%
District 4	48,086	26.31	5.24%	56,491	29.01	16.05%
Total	182,760	100	20.25%	194,715	100	36.56%
Average	45,690	25	5.06%	48,679	25	9.14%



MAP ALTERNATIVES



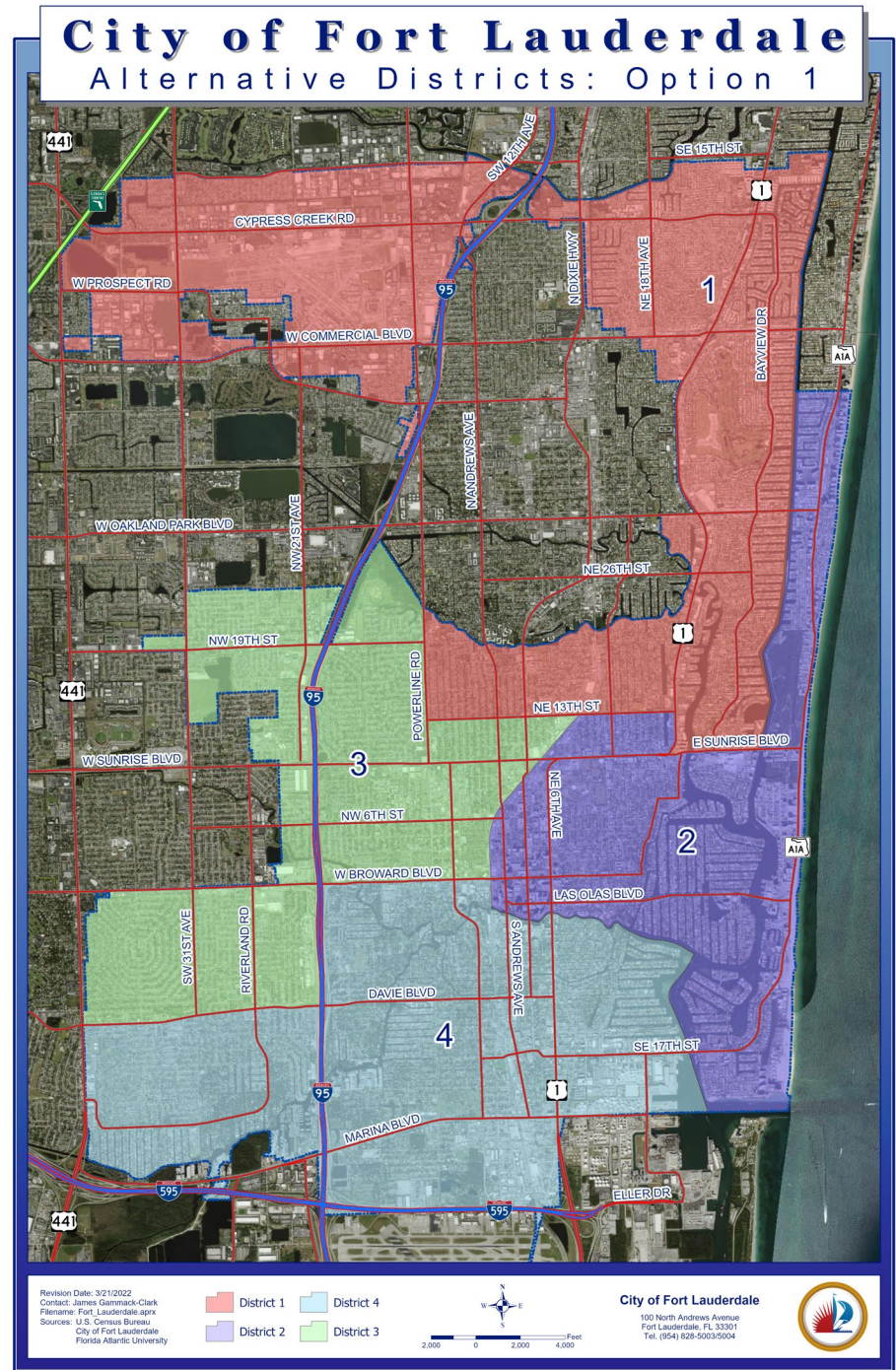
Alternatives

- Four Alternatives have been prepared for consideration:
 - The overall pattern of district boundary changes needed to increase the population of District 1 and decrease District 4.
 - Each map alternative impacts each election district.
 - All meet standard districting guidelines and the requirements of the City Charter
 - Each map provides an alternate way to balance district populations and achieve better population equity
 - Maps do not arbitrarily dilute minority populations
 - Each map attempts to improve spatial compactness and maintain contiguity
 - Consideration for communities, neighborhoods, and public comments

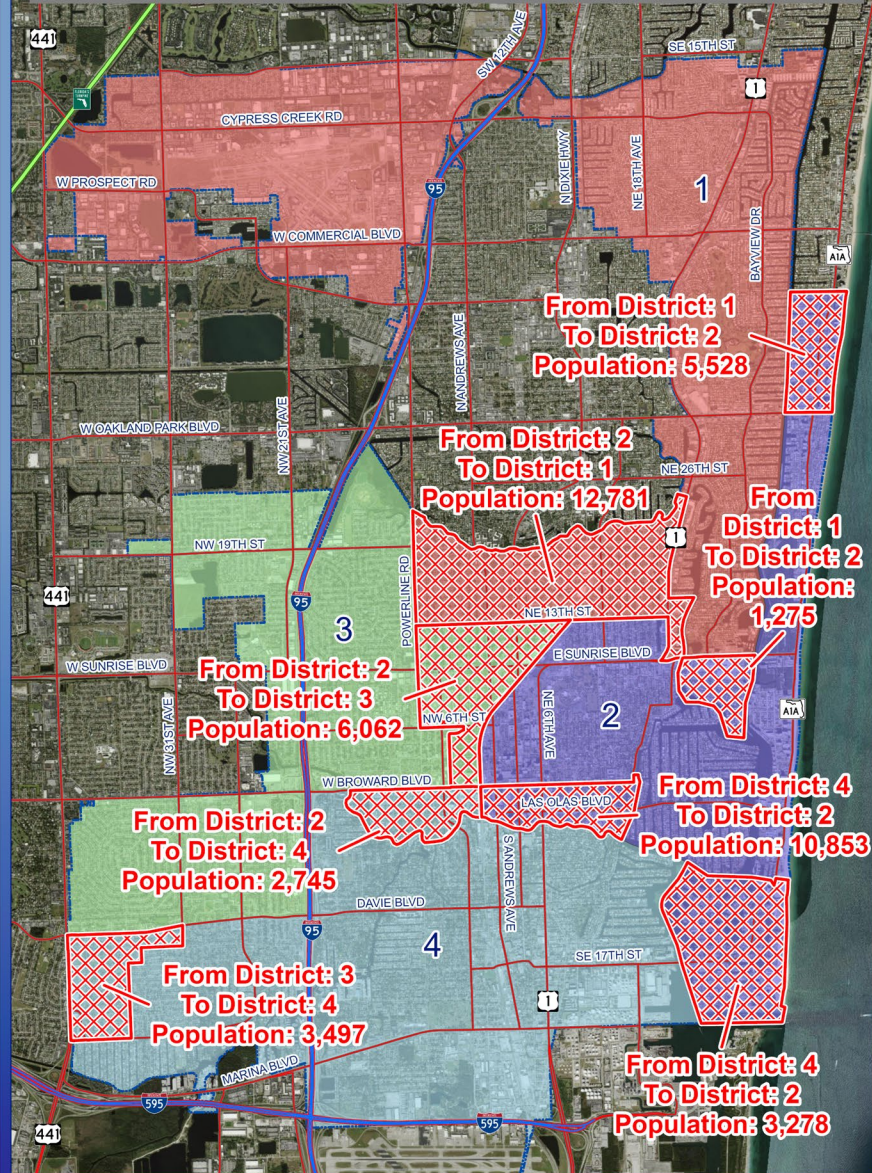


Alternative 1

- In this case, the necessary expansion of District 1 occurs to the west
 - Total Deviation: 1.78%
 - Mean Deviation: 0.44%
 - Spread: 1.45%



Alternative 1



- District 1 gains:
 - 12,781 people from District 2 north of 13th and east of US 1
- District 2 gains:
 - 5,528 people from District 1 north of Oakland Park and east of the Intracoastal
 - 1,275 people from District 1 south of Sunrise Blvd
 - 3,278 people east of the Intracoastal from District 4
 - 10,853 people from District 4 north of New River east of the FEC railway
- District 3 gains:
 - 6,062 people south of 13th west of the FEC railway down to Broward Blvd from District 2
- District 4 gains:
 - 2,745 people from District 2 north of the New River
 - 3,497 people from District 3 south of Davie Blvd





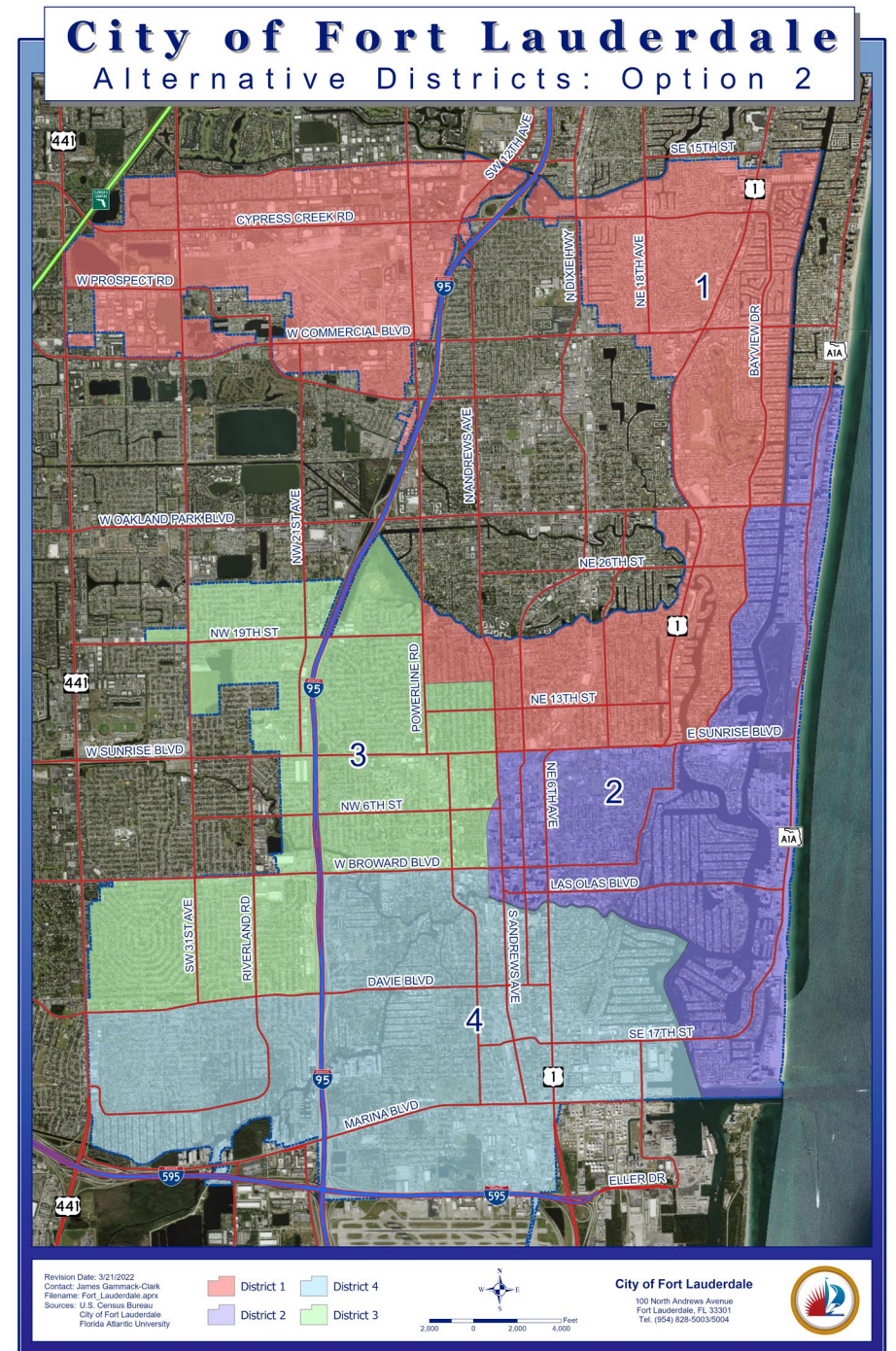
Alternative 1

Alt. 1	2020 Population	% of City	Deviation From Average	2023 Population Projection	% of City	Deviation From Average
District 1	47,857	26.19	4.74%	48,592	24.96	-0.18%
District 2	41,562	22.74	-9.03%	49,111	25.22	0.89%
District 3	46,566	25.48	1.92%	48,407	24.86	-0.56%
District 4	46,775	25.59	2.37%	48,605	24.96	-0.15%
Total	182,760	100	18.07%	194,715	100	1.78%
Average	45,690	25	4.52%	48,679	25	0.44%

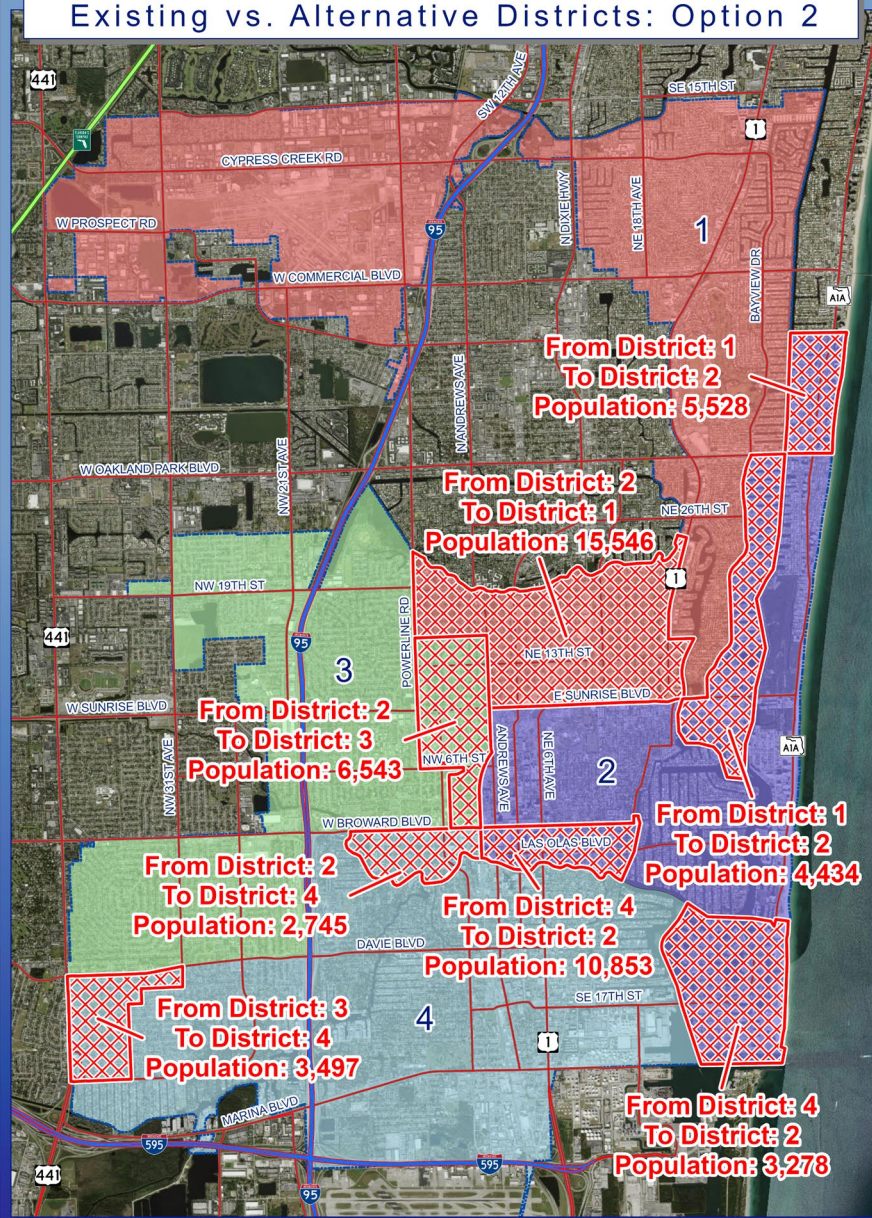


Alternative 2

- Again, the necessary expansion of District 1 occurs to the west
 - Total Deviation: 2.28%
 - Mean Deviation: 0.57%
 - Spread: 1.70%



Alternative 2



- District 1 gains:
 - 15,546 people from District 2 north of Sunrise Blvd
- District 2 gains:
 - 5,528 people from District 1 north of Oakland Park and east of the Intracoastal
 - 4,434 people east of Bayview and south of Sunrise Blvd
 - 3,278 people east of the Intracoastal from District 4
 - 10,853 people from District 4 north of New River east of the FEC railway
- District 3 gains:
 - 6,543 people west of Andrews south of 15th Street from District 2
- District 4 gains:
 - 2,745 people from District 2 north of the New River
 - 3,497 people from District 3 south of Davie Blvd



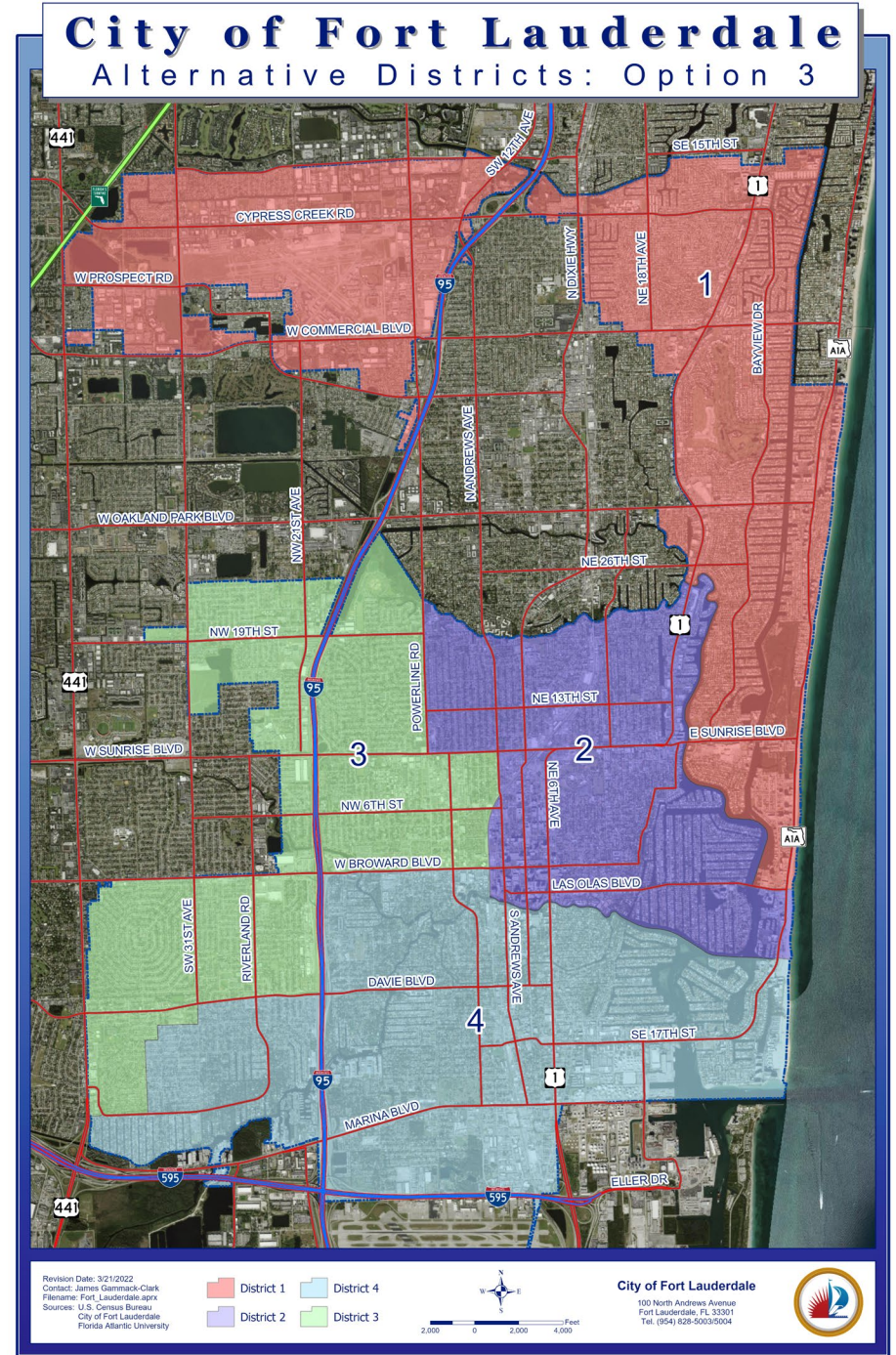
Alternative 2

Alt. 2	2020 Population	% of City	Deviation From Average	2023 Population Projection	% of City	Deviation From Average
District 1	47,637	26.07	4.26%	48,198	24.75	-0.99%
District 2	41,289	22.59	-9.63%	49,024	25.18	0.71%
District 3	47,059	25.75	3.00%	48,888	25.11	0.43%
District 4	46,775	25.59	2.37%	48,605	24.96	-0.15%
Total	182,760	100	19.26%	194,715	100	2.28%
Average	45,690	25	4.82%	48,679	25	0.57%

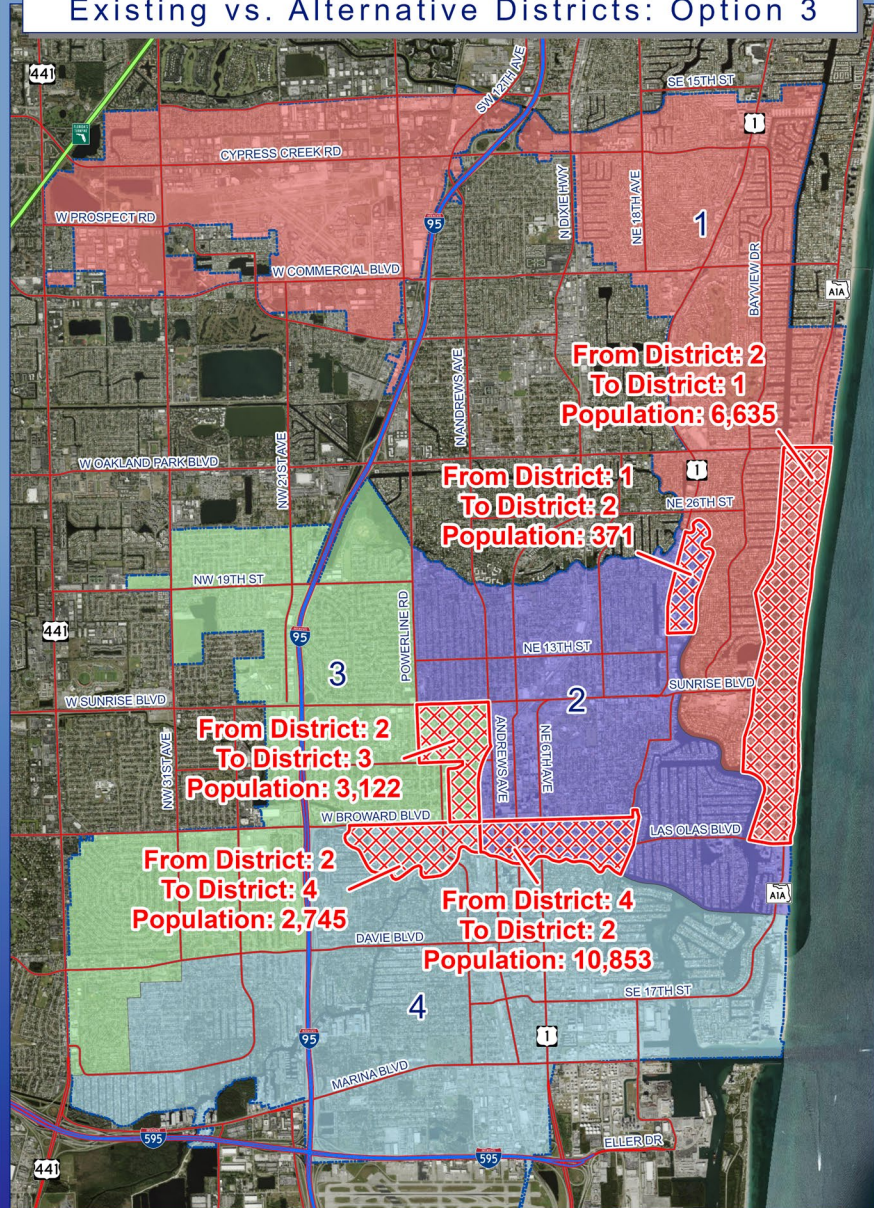


Alternative 3

- In this case, the necessary expansion of District 1 occurs to the south and east
 - Total Deviation: 1.99%
 - Mean Deviation: 0.5%
 - Spread: 1.19%



Alternative 3



- District 1 gains:
 - 6,635 people from District 2 east of the Intracoastal and north of Las Olas Blvd
- District 2 gains:
 - 371 people from District 1 east of US 1
 - 10,853 people from District 4 north of New River east of the FEC railway
- District 3 gains:
 - 3,122 people from District 2 west of Andrews Ave south of Sunrise Blvd
- District 4 gains:
 - 2,745 people from District 2 north of the New River



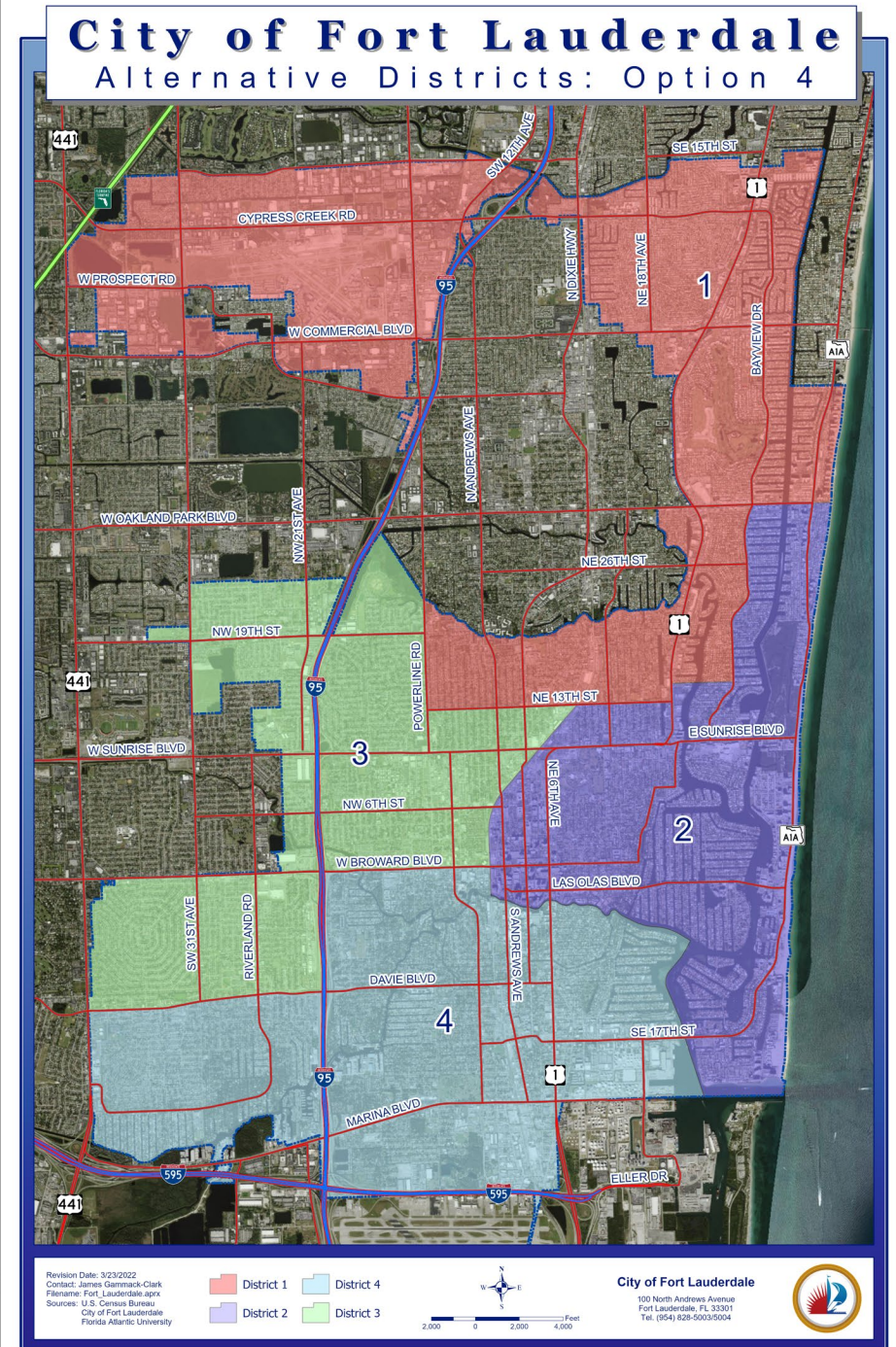
Alternative 3

Alt. 3	2020 Population	% of City	Deviation From Average	2023 Population Projection	% of City	Deviation From Average
District 1	48,160	26.35	5.41%	48,878	25.10	0.41%
District 2	40,920	22.39	-10.44%	48,487	24.90	-0.39%
District 3	47,155	25.80	3.21%	48,964	25.15	0.59%
District 4	46,525	25.46	1.83%	48,386	24.85	-0.60%
Total	182,760	100	20.88%	194,715	100	1.99%
Average	45,690	25	5.22%	48,679	25	0.50%

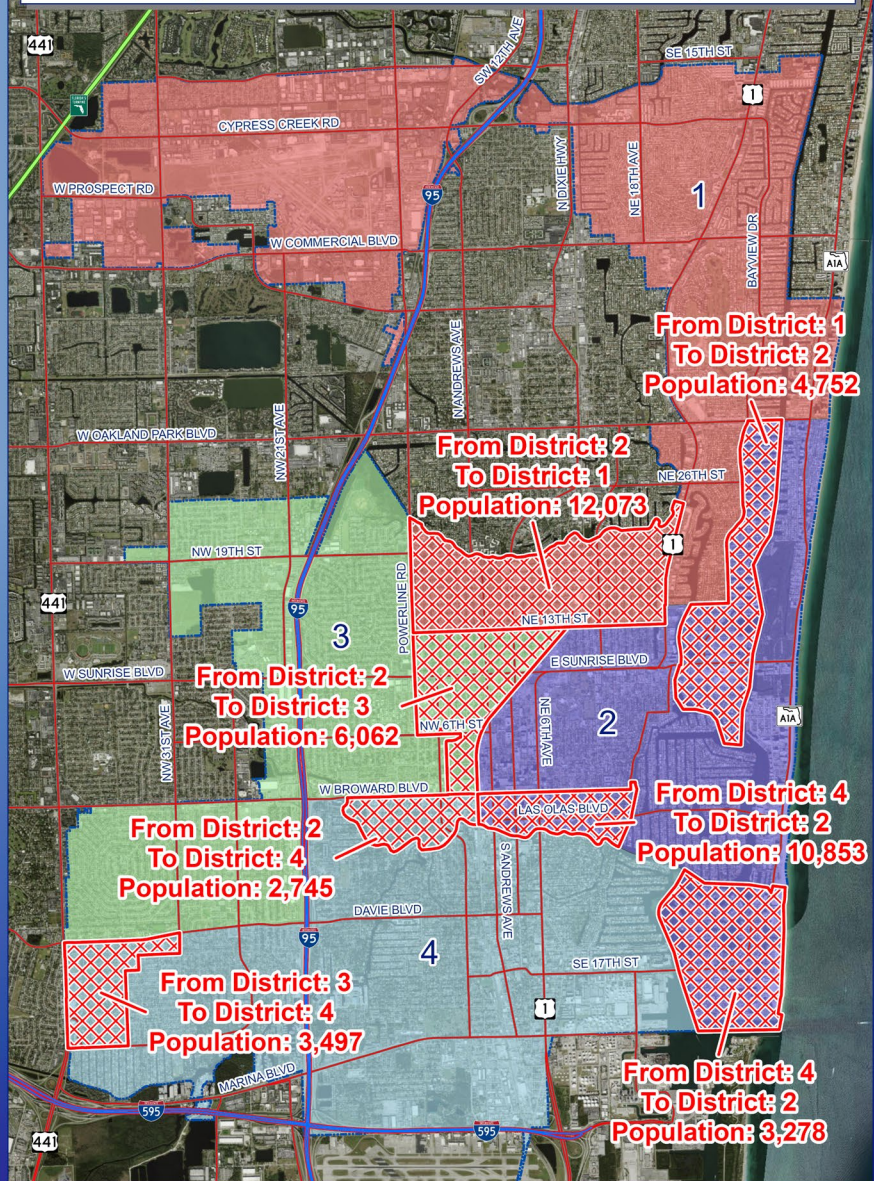


Alternative 4

- Again, the necessary expansion of District 1 occurs to the west
 - Total Deviation: 5.16%
 - Mean Deviation: 1.29%
 - Spread: 4.45%



Alternative 4



- District 1 gains:
 - 12,073 people from District 2 north of 13th St
- District 2 gains:
 - 4,752 people from District 1 east of Bayview Dr and south of Sunrise Blvd
 - 3,278 people from District 4 east of the Intracoastal
 - 10,853 people from District 4 north of New River east of the FEC railway
- District 3 gains:
 - 6,062 people from District 2 south of 13th S, west of the FEC railway and down to Broward Blvd
- District 4 gains:
 - 2,745 people from District 2 north of the New River
 - 3,497 people from District 3 south of Davie Blvd



Alternative 4

Alt. 4	2020 Population	% of City	Deviation From Average	2023 Population Projection	% of City	Deviation From Average
District 1	49,670	27.18	8.71%	49,935	25.65	2.58%
District 2	39,749	21.75	-13.00%	47,768	24.53	-1.87%
District 3	46,566	25.48	1.92%	48,407	24.86	-0.56%
District 4	46,775	25.59	2.37%	48,605	24.96	-0.15%
Total	182,760	100	26.01%	194,715	100	5.16%
Average	45,690	25	6.50%	48,679	25	1.29%



Summary – 4 Map Alternatives

Configuration	Impacted Population	Total Deviation	Mean Deviation	Spread	Split Neighborhoods
Existing	N/A	35.56	9.14	28.51	1 Progresso Village
Alternative 1	46,109	1.78	0.44	1.45	4 Downtown Fort Lauderdale, Lake Ridge, South Middle River, Middle River Terrace
Alternative 2	52,424	2.28	0.57	1.70	3* Downtown Fort Lauderdale, South Middle River, Coral Ridge
Alternative 3	23,726	1.99	0.50	1.19	1* Central Beach Alliance
Alternative 4	43,260	5.16	1.29	4.45	4 Downtown Fort Lauderdale, South Middle River, Middle River Terrace, Coral Ridge

* A split in the Progresso Village neighborhood is excluded from the tally as the residential portion remains intact.



Timeline

- March 7, 2022 - District Analysis Submitted
- March 15, 2022 - Commission Meeting
- March 17, 2022 – Public Outreach Meeting
- March 21, 2022 - Redistricting Alternatives Report Submitted
- March 22 to April 5 - Public Comments
- April 5, 2022 – Commission Meeting and 1st Reading
- April 19, 2022 - Commission Meeting and 2nd Reading/Adoption
- Submit new Election District Map to Supervisor of Elections



FLORIDA ATLANTIC UNIVERSITY

Questions?

Map Alternatives for the City of Fort Lauderdale

April 5, 2022



FLORIDA ATLANTIC UNIVERSITY

Questions?

Map Alternatives for the City of Fort Lauderdale

April 5, 2022