

Beverly Heights Residential Parking Permit Study



Residential Parking Permit Survey

- TAM, in coordination with the Strategic Communications Office, surveyed the Beverly Heights neighborhood with regards to a residential parking permit program.
- Surveys were mailed in June 2017 with an end date of July 7th, 2017.
- TAM received responses from the on-line survey with 29 out of 50 responses approving the residential parking permit program



CITY OF FORT LAUDERDALE

BEVERLY HEIGHTS Residential Parking Permit Program

Vote at www.fortlauderdale.gov/beverlyheightsrpp by July 7th!

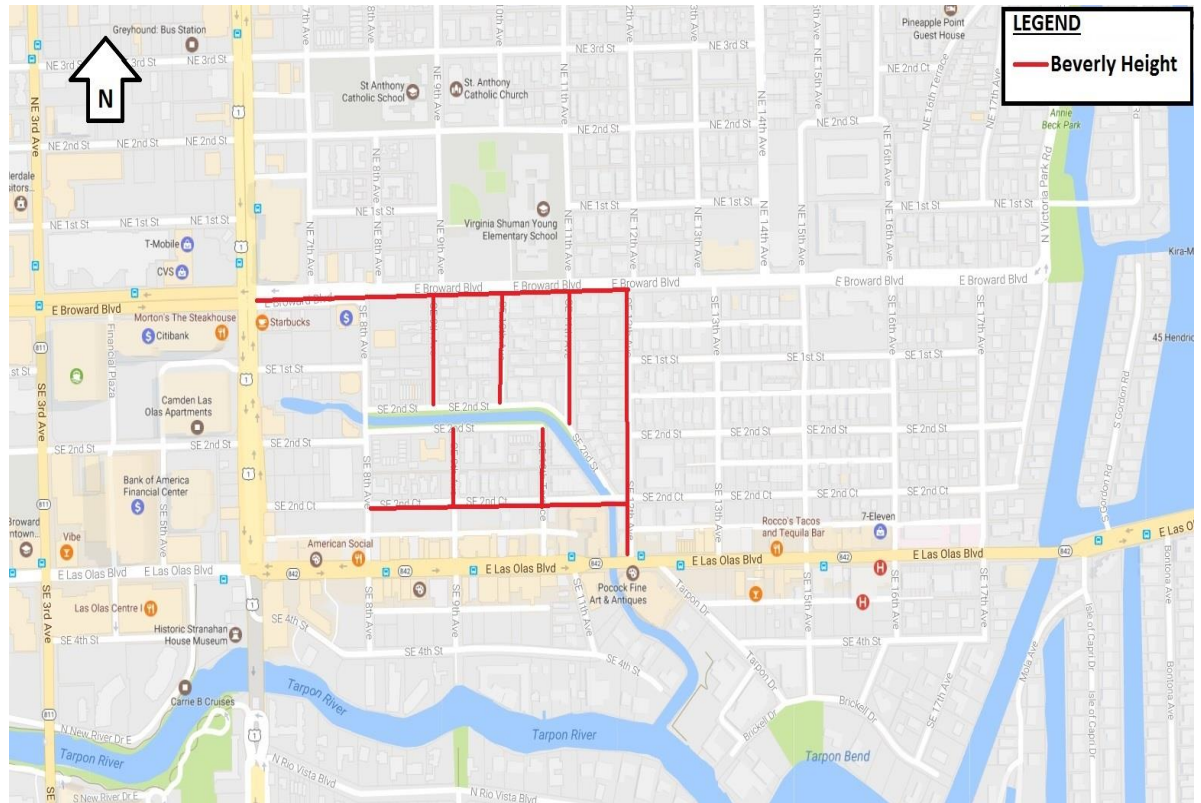
Parking Study – Beverly Heights

- A Parking Study was conducted from Saturday May 19th to Friday, June 2nd.
- The study area was from S. Federal Highway to NE 12th Avenue and From E. Broward Blvd. to E. Las Olas Blvd.
- The study was conducted with our License Plate Recognition (LPR) system. The data was captured every hour, on the hour, for a 24 hour period.
- The data shows that an average of 84.4% of the vehicles parked in the study area were non-residents.

Day of Week	Total Vehicles	Residents	Non-Residents	% of Residents	% of Non-Res
Sunday	130	14	116	10.8%	89.2%
Monday	102	18	84	17.6%	82.4%
Tuesday	93	17	76	18.3%	81.7%
Wednesday	103	15	88	14.6%	85.4%
Thursday	58	14	44	24.1%	75.9%
Friday	70	12	58	17.1%	82.9%
Saturday	116	15	101	12.9%	87.1%
Totals All Days	672	105	567		
		15.6%	84.4%		

Residential Parking Permit Program

- The proposed area for the residential parking permit program for Beverly Heights is from S. Federal Highway to NE 12th Avenue and From E. Broward Blvd. to E. Las Olas Blvd
- The proposed restriction period for non-neighbor vehicles in the neighborhood would be seven days a week from 10am to 8pm; however the data shows eligibility to midnight.
- The cost of the annual permits will be \$30.



Quality of Life Issues – Vehicle Safety / No parking



Quality of Life Issues – Trash

