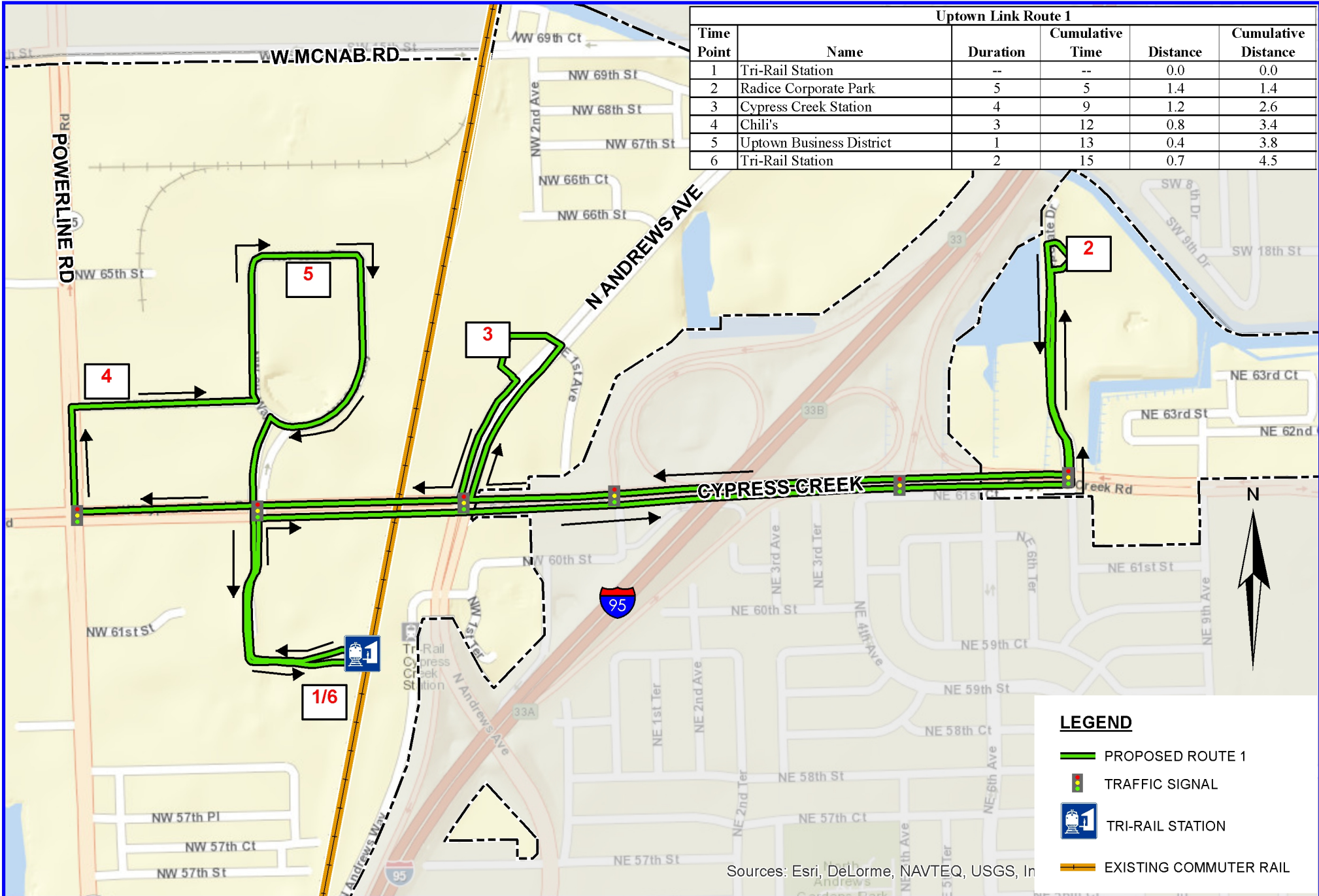


Uptown Link Route 1					
Time Point	Name	Duration	Cumulative Time	Distance	Cumulative Distance
1	Tri-Rail Station	--	--	0.0	0.0
2	Radice Corporate Park	5	5	1.4	1.4
3	Cypress Creek Station	4	9	1.2	2.6
4	Chili's	3	12	0.8	3.4
5	Uptown Business District	1	13	0.4	3.8
6	Tri-Rail Station	2	15	0.7	4.5



**LEGEND**

- PROPOSED ROUTE 1
- TRAFFIC SIGNAL
- TRI-RAIL STATION
- EXISTING COMMUTER RAIL

Sources: Esri, DeLorme, NAVTEQ, USGS, In



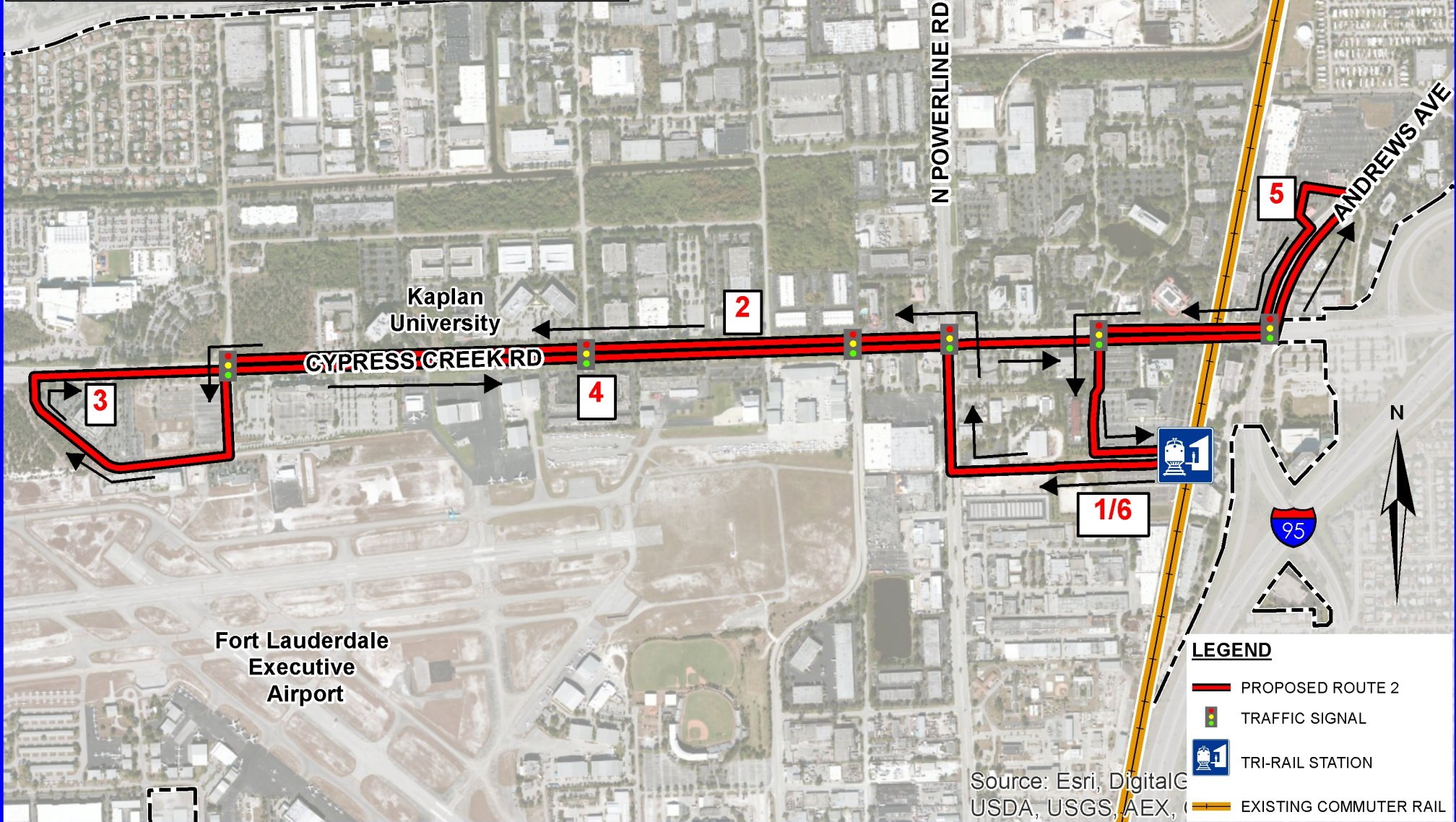
**CITY of FORT LAUDERDALE  
PROPOSED UPTOWN LINK ROUTE 1**



CAM 14-0108  
Exhibit 1 1/8/2014

GIS Dept: P:113\_TAM\_TRANSIT\_DRArcMapUPTOWNUPTOWN\_FOCUS\_GROUP\_ROUTES -- 1 010614.mxd -- INT

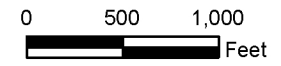
Uptown Link Route 2					
Time Point	Name	Duration	Cumulative Time	Distance	Cumulative Distance
1	Tri-Rail Station	--	--	0.0	0.0
2	Sanford Brown	3	3	0.8	0.8
3	Nipro/Calvary	3	6	1.1	1.9
4	Cypress Commons	2	8	0.7	2.6
5	Cypress Creek Station	5	13	1.3	3.9
6	Tri-Rail Station	3	16	0.7	4.6



Source: Esri, DigitalGlobe, GeoEye, IGN, Aeri, USDA, USGS, AEX, ...



**CITY of FORT LAUDERDALE  
PROPOSED UPTOWN LINK ROUTE 2**



**GRAPHIC SCALE**  
CAM 14-0108  
Exhibit 1 1/8/2014  
Page 2 of 2