

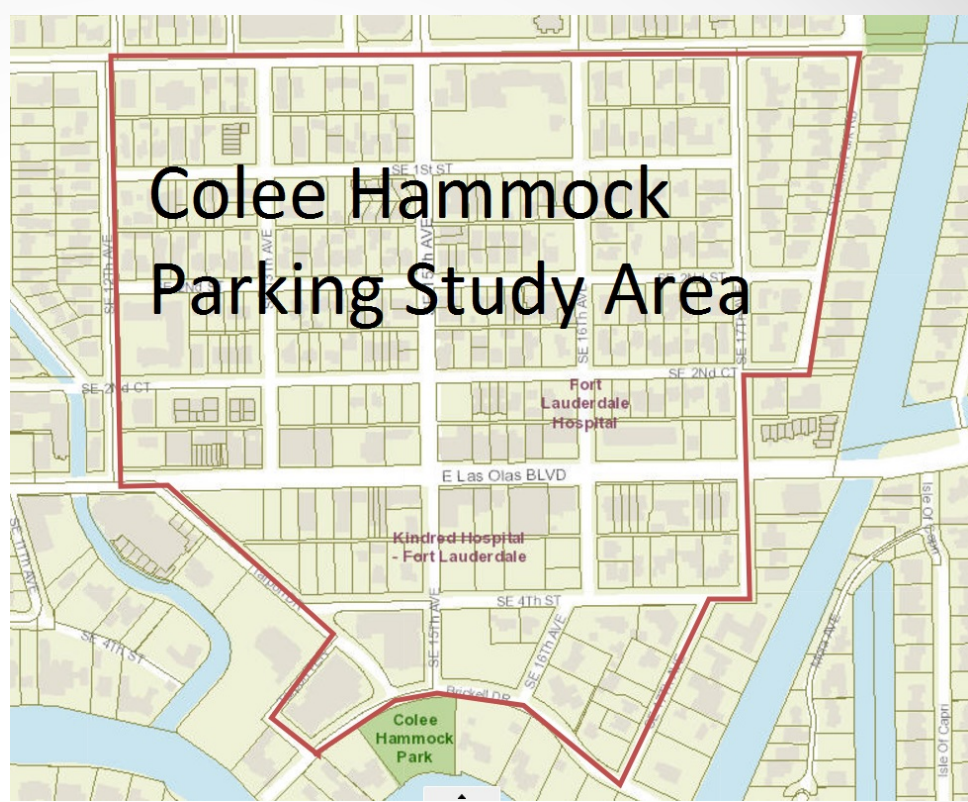
Colee Hammock

Residential Parking Permit Study



Parking Study- Colee Hammock

- Parking study was conducted from May 4, 2016 through May 10, 2016, which included a special event "Cinco De Mayo".
- The study area was from E. Broward Blvd. to Brickell Dr., and from SE 12th Ave. to S. Victoria Park Rd.
- The study was conducted with our License Plate Recognition (LPR) system. The data was captured every hour, on the hour, for a 24 hour period.
- The data shows that an average of 73.9% of the vehicles parked in the study area were non-residents.



Day of Week	Total Vehicles	Residents	Non-Residents	% of Residents	% of Non-Res
Sunday	139	30	109	21.6%	78.4%
Monday	128	26	102	20.3%	79.7%
Tuesday	58	26	32	44.8%	55.2%
Wednesday	62	18	44	29.0%	71.0%
Thursday	85	18	67	21.2%	78.8%
Friday	79	26	53	32.9%	67.1%
Saturday	141	36	105	25.5%	74.5%
Totals All Days	692	180	512	26.0%	74.0%

Residential Parking Permit Survey

- TAM, in coordination with the Strategic Communication Office, surveyed the Colee Hammock neighborhood with regards to a residential parking permit program.
- Surveys were mailed in February 2017 with an end date of March 3rd, 2017.
- TAM received 137 responses from the on-line survey with 122 responses approving the residential parking permit program.



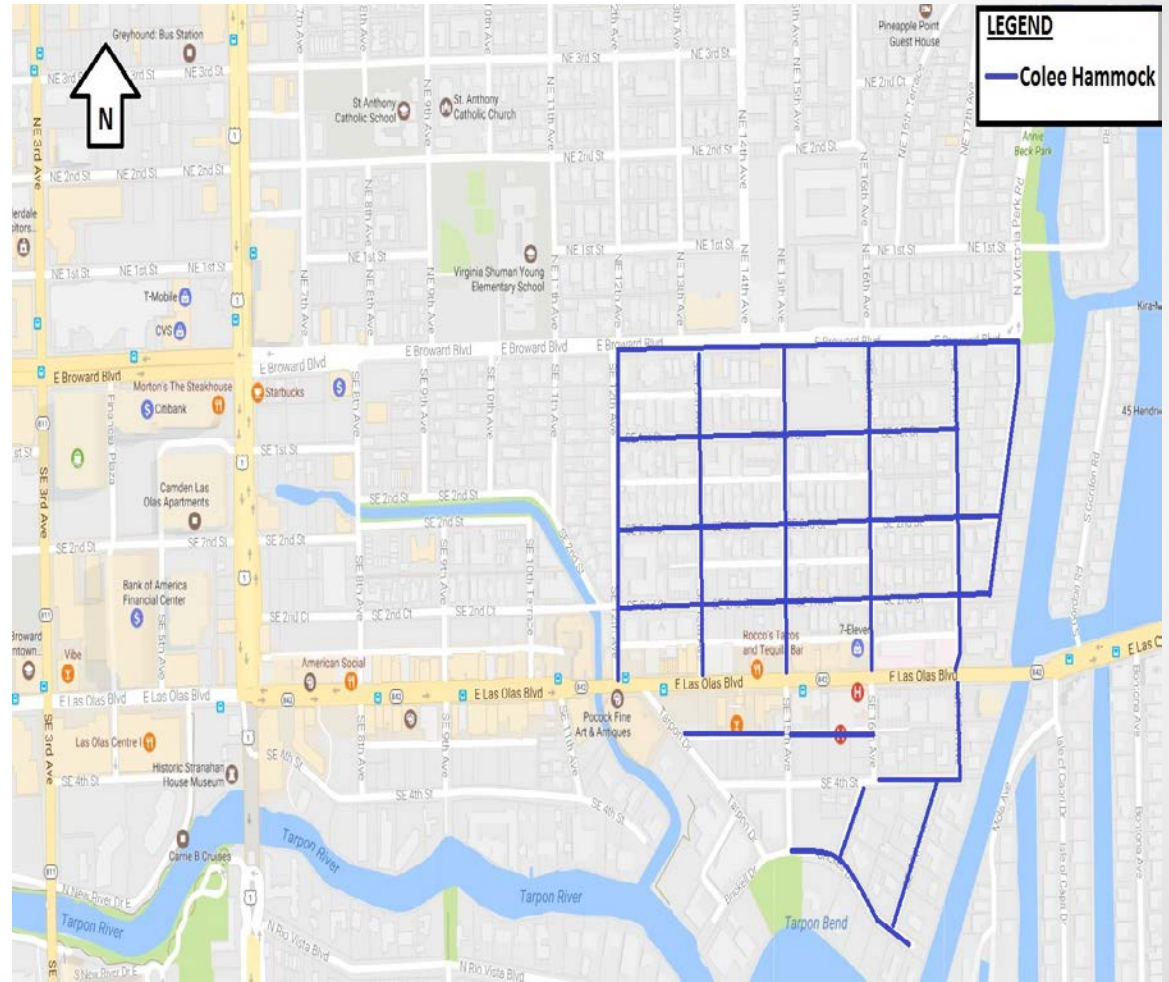
CITY OF FORT LAUDERDALE

**COLEE HAMMOCK
Residential Parking
Permit Program**

Vote at www.fortlauderdale.gov/coleehammockrpp by March 3rd!

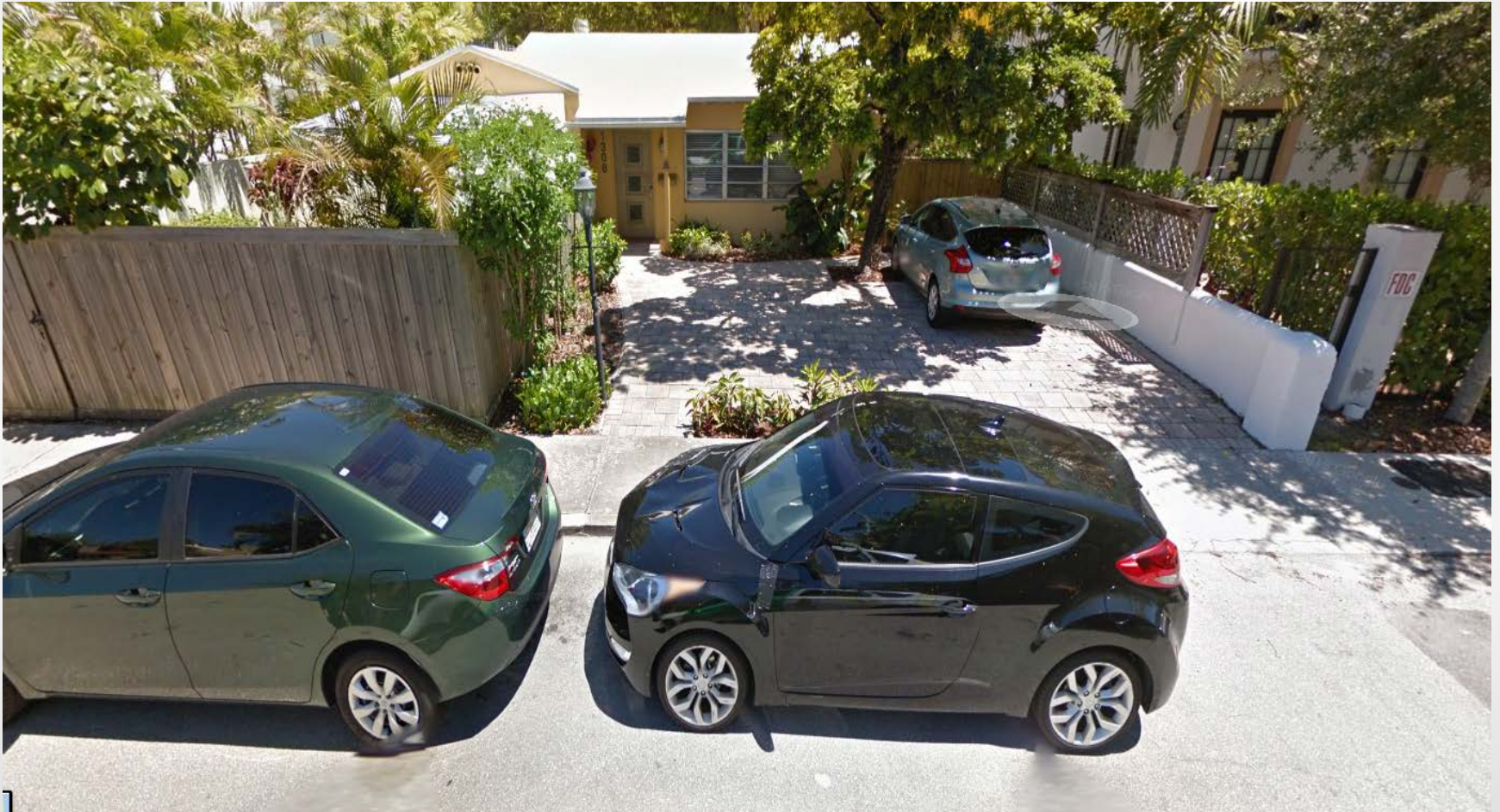
Residential Parking Permit Program

- The proposed area for the residential parking permit program for Colee Hammock is from E. Broward Blvd. south to Brickell Dr. and from SE 12th Avenue east to S. Victoria Park Rd with some exemptions. These exemptions include Tarpon Dr. from E. Las Olas to Brickell Dr. SE 15th Ave. from E. Las Olas to Brickell Dr. SE 16th Ave. from E. Las Olas to SE 4th St. and both Brickell Dr. and Tarpon Terrace from Tarpon Dr. west.
- The proposed restriction period for non-neighbor vehicles in the neighborhood would be seven days a week from 10am to 8pm; however the data shows eligibility to midnight. The cost of the annual permits will be \$30.
- The cost of the annual permits would be \$30.



Quality of Life Issues

Blocking of driveways/Line of Sight Issues



Quality of Life Issues

Vehicle Safety



Quality of Life Issues

Inability to pick up Sanitation



Quality of Life Issues

Inability to pick up Sanitation



Quality of Life Issues



Quality of Life Issues

Trash



Quality of Life Issues

Lack of enforcement

