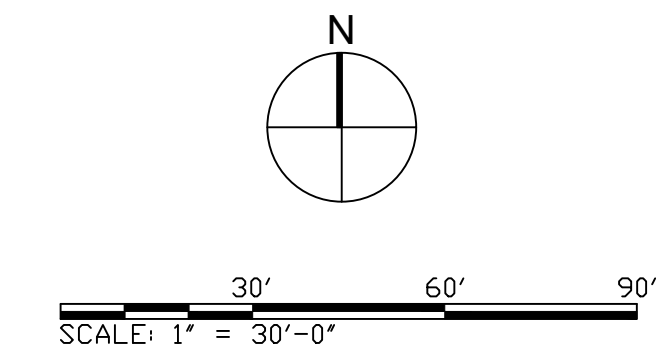


- LEGEND**  
 PROPOSED ELEMENTS
- (A) SPLASH PAD
  - (B) SHADE STRUCTURES
  - (C) SITE FURNITURE
  - (D) PATH
  - (E) SIGN
  - LIMIT OF WORK



**PROJECT**  
 WARFIELD PARK  
 FORT LAUDERDALE  
 PARKS BOND PROGRAM

**CLIENT**



**CONSULTANT**

AECOM  
 7650 W. COURTNEY CAMPBELL CAUSEWAY  
 SUITE 700  
 TAMPA, FL 33607  
 813.286.1711 tel 813.287.8591 fax  
 www.aecom.com

**SUB-CONSULTANT**

**CIVIL**  
 BCC ENGINEERING  
 305.670.2350 tel  
 www.bcceng.com

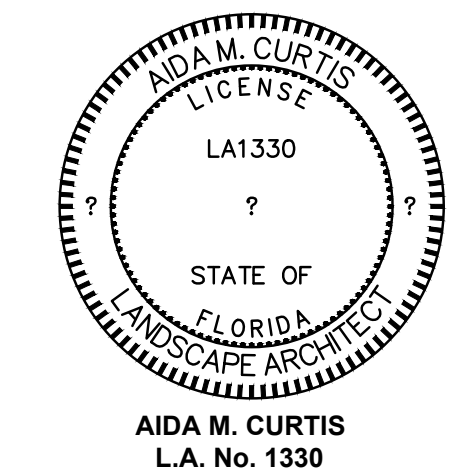
**LANDSCAPE**  
 CURTIS + ROGERS DESIGN STUDIO  
 305.442.1774 tel  
 www.curtisrogers.com

**GEOTECHNICAL SERVICES**  
 GEOSOL, INC.  
 305.928.4367 tel  
 www.geosol.net

**SURVEYOR**  
 PDS, INC.  
 954.237.7850 tel  
 www.pds-eng.com

**MECHANICAL, PLUMBING AND FIRE PROTECTION**  
 HAMMOND AND ASSOCIATES CONSULTING  
 954.327.7111 tel  
 www.hammondengineers.com

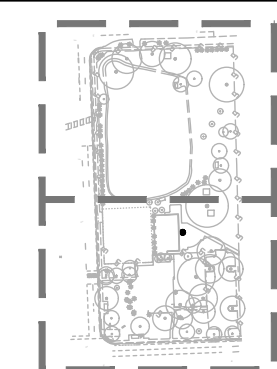
**REGISTRATION**



**ISSUE/REVISION**

I/R	DATE	DESCRIPTION
	01/13/2023	BID DOCUMENTS
	09/09/2022	CONSTRUCTION DOCUMENTS
	06/17/2022	DESIGN DEVELOPMENT
	04/08/2022	SCHEMATIC DESIGN

**KEY PLAN**



**PROJECT NUMBER**  
 P12680

**SHEET TITLE**  
 KEY PLAN

**SHEET NUMBER**  
 G101

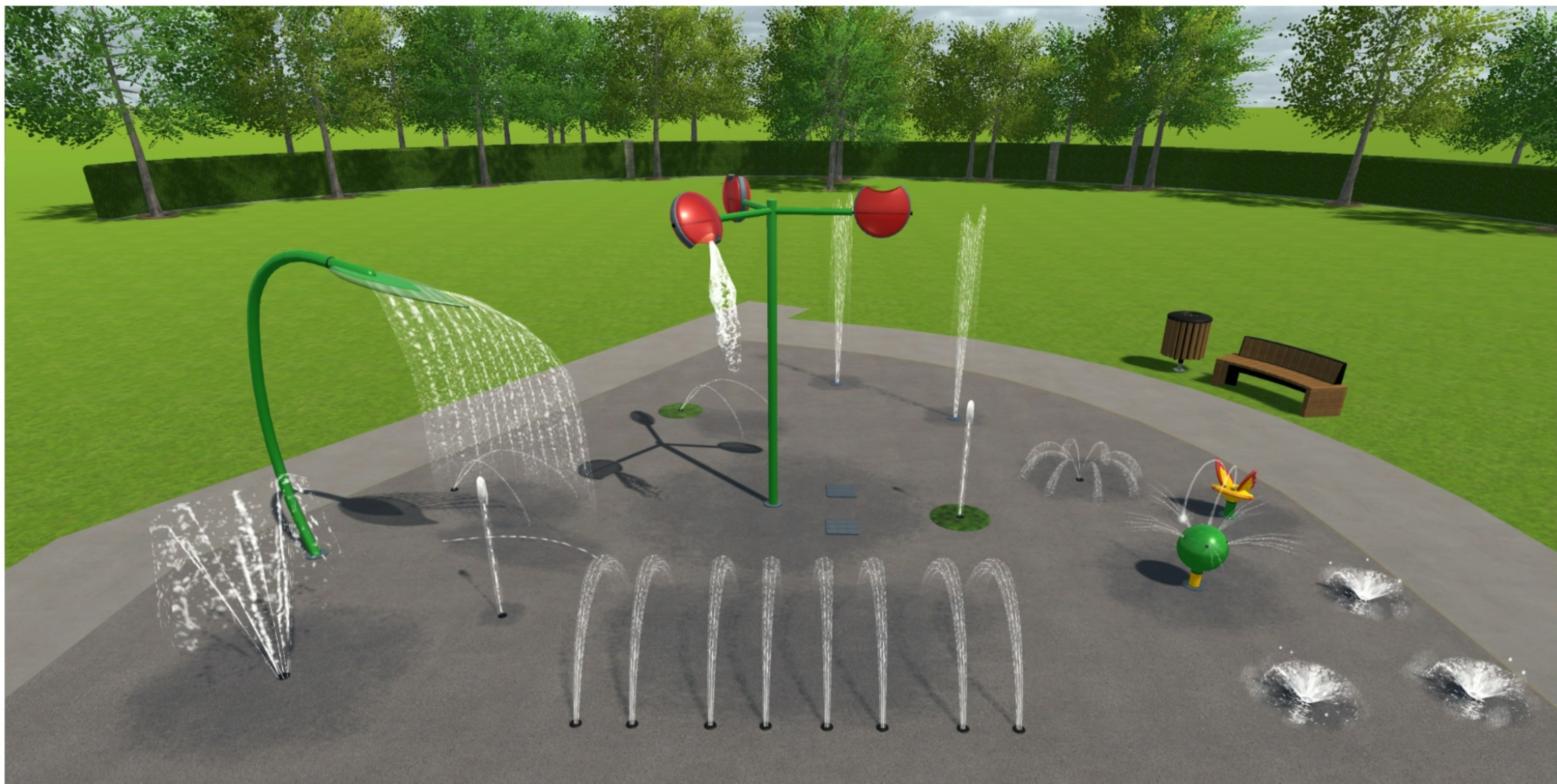
NOTICE: THE OFFICIAL RECORD OF THIS SHEET IS THE ELECTRONIC FILE SIGNED AND SEALED UNDER RULE 61G10-11.011, F.A.C.



Copyright 2022 Waterplay Solutions Corp. Artist's visual interpretation of the project. Cannot be considered factual representation of the final product.



Copyright 2022 Waterplay Solutions Corp. Artist's visual interpretation of the project. Cannot be considered factual representation of the final product.



# Warfield Park

Copyright 2022 Waterplay Solutions Corp. Artist's visual interpretation of the project. Cannot be considered factual representation of the final product.



# Warfield Park

Copyright 2022 Waterplay Solutions Corp. Artist's visual interpretation of the project. Cannot be considered factual representation of the final product.

