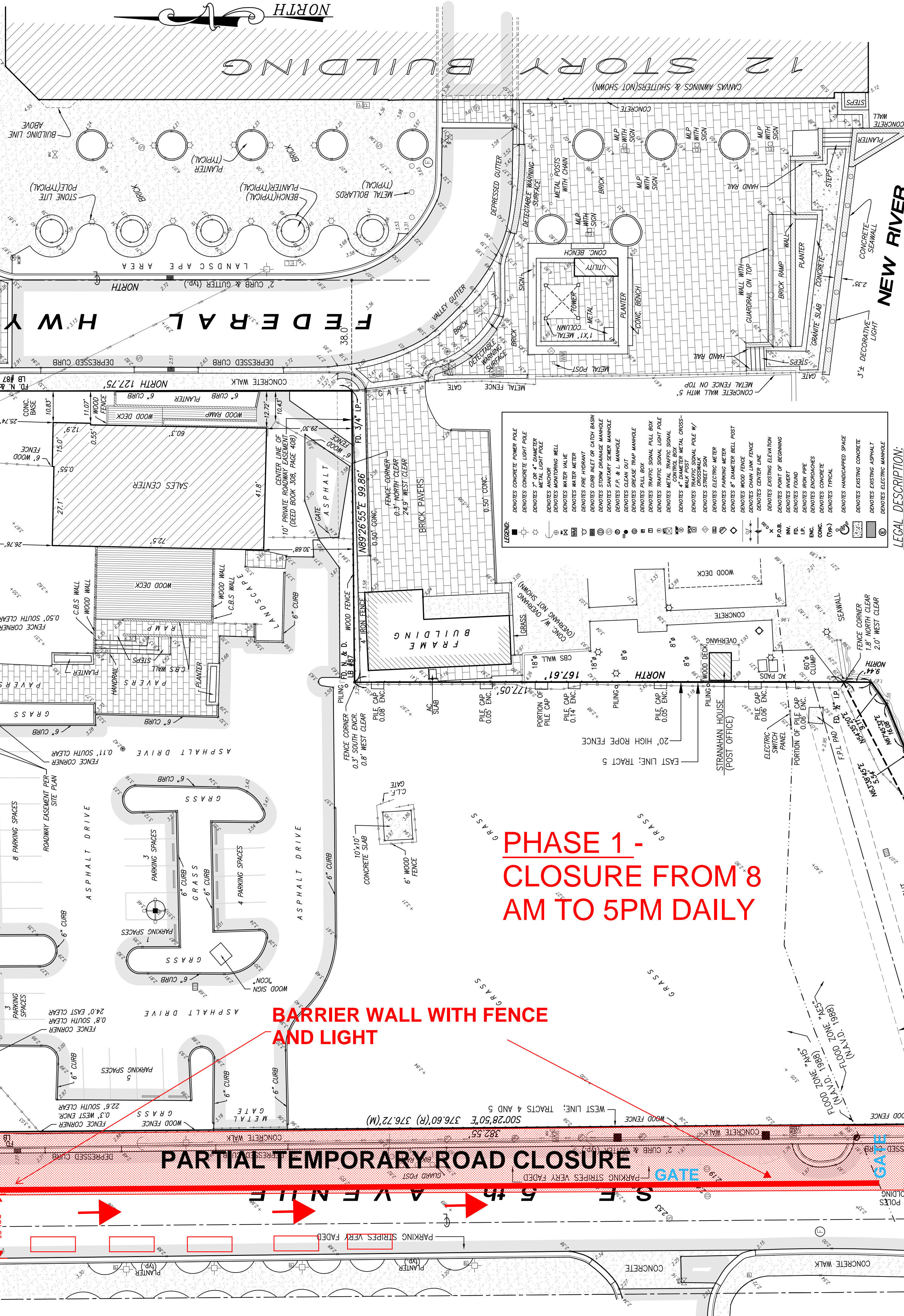


EAST LAS OLAS BOULEVARD

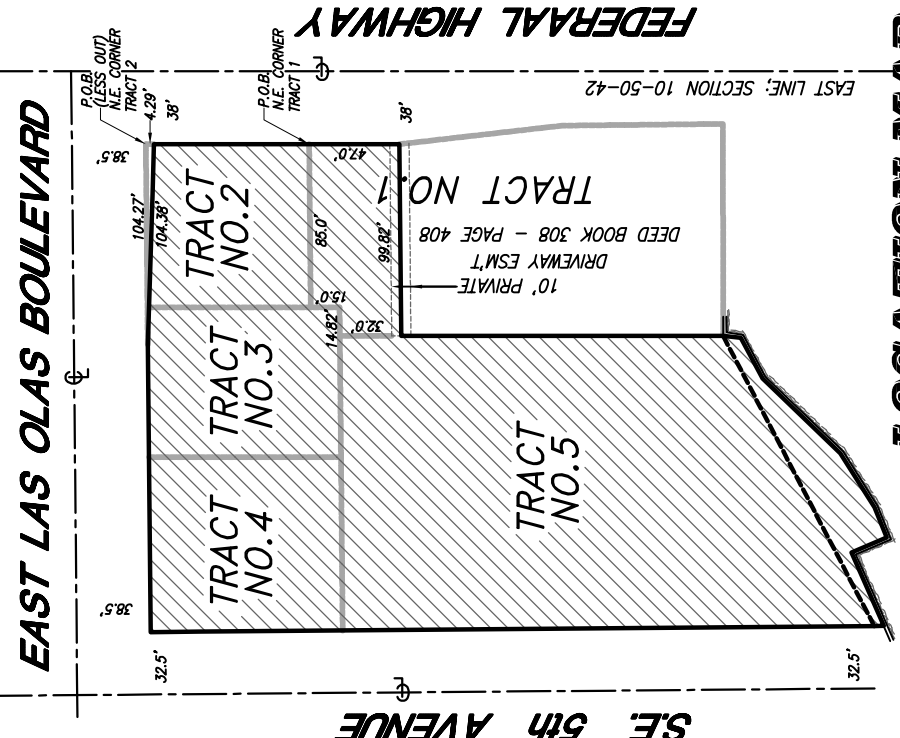
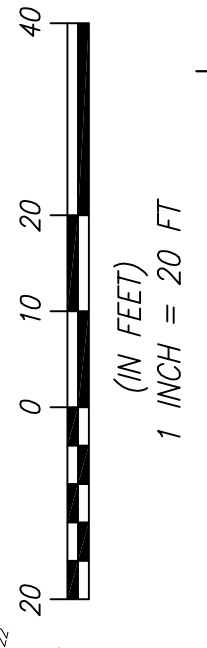
WALKWAY



PHASE 1 - CLOSURE FROM 8 AM TO 5PM DAILY

BARRIER WALL WITH FENCE AND LIGHT

PARTIAL TEMPORARY ROAD CLOSURE



LOCATION MAP SCALE 1" = 100'

SHOWN HEREON ARE PLOTTABLE EASEMENTS AND RIGHTS OF WAY REFLECTED AS EXCEPTIONS IN SCHEDULE B-II OF TITLE INSURANCE COMMITMENT FILE NUMBER 411140032675 ISSUED BY COMMONWEALTH LAND TITLE INSURANCE COMPANY WITH AN EFFECTIVE DATE OF OCTOBER 1, 2014 @ 11:00 A.M. AND TITLE INSURANCE COMMITMENT FILE NUMBER 4771505 ISSUED BY CHICAGO TITLE INSURANCE COMPANY WITH AN EFFECTIVE DATE OF OCTOBER 5, 2014 @ 11:00 A.M. - REVISION "C"

- 1. TERMS AND PROVISIONS OF THE CONSISTENT FINAL JUDGMENT IN CASE NO. 00-10449-09 RECORDED NOVEMBER 24, 2010, AND THE PUBLIC RECORDS OF BROWARD COUNTY, FLORIDA, AS TO PARCEL 29 OF PLAT BOOK 15, PAGE 187, OF THE PUBLIC RECORDS OF BROWARD COUNTY, FLORIDA. (AS TO PARCEL 29 OF PLAT BOOK 15, PAGE 187, OF THE PUBLIC RECORDS OF BROWARD COUNTY, FLORIDA, AS TO PARCEL 29 OF PLAT BOOK 15, PAGE 187, OF THE PUBLIC RECORDS OF BROWARD COUNTY, FLORIDA.)
2. EASEMENT TO FLORIDA POWER & LIGHT COMPANY, DATED AUGUST 3, 1965, AND RECORDED SEPTEMBER 13, 1965, IN OFFICIAL RECORDS BOOK 3081, PAGE 68, IN THE PUBLIC RECORDS OF BROWARD COUNTY, FLORIDA. (AS TO PARCEL 29 OF PLAT BOOK 15, PAGE 187, OF THE PUBLIC RECORDS OF BROWARD COUNTY, FLORIDA.)
3. EASEMENT TO FLORIDA POWER & LIGHT COMPANY, DATED AUGUST 3, 1965, AND RECORDED SEPTEMBER 13, 1965, IN OFFICIAL RECORDS BOOK 3081, PAGE 68, IN THE PUBLIC RECORDS OF BROWARD COUNTY, FLORIDA. (AS TO PARCEL 29 OF PLAT BOOK 15, PAGE 187, OF THE PUBLIC RECORDS OF BROWARD COUNTY, FLORIDA.)
4. EASEMENT TO FLORIDA POWER & LIGHT COMPANY, DATED AUGUST 3, 1965, AND RECORDED SEPTEMBER 13, 1965, IN OFFICIAL RECORDS BOOK 3081, PAGE 68, IN THE PUBLIC RECORDS OF BROWARD COUNTY, FLORIDA. (AS TO PARCEL 29 OF PLAT BOOK 15, PAGE 187, OF THE PUBLIC RECORDS OF BROWARD COUNTY, FLORIDA.)
5. EASEMENT TO FLORIDA POWER & LIGHT COMPANY, DATED AUGUST 3, 1965, AND RECORDED SEPTEMBER 13, 1965, IN OFFICIAL RECORDS BOOK 3081, PAGE 68, IN THE PUBLIC RECORDS OF BROWARD COUNTY, FLORIDA. (AS TO PARCEL 29 OF PLAT BOOK 15, PAGE 187, OF THE PUBLIC RECORDS OF BROWARD COUNTY, FLORIDA.)
6. EASEMENT TO FLORIDA POWER & LIGHT COMPANY, DATED AUGUST 3, 1965, AND RECORDED SEPTEMBER 13, 1965, IN OFFICIAL RECORDS BOOK 3081, PAGE 68, IN THE PUBLIC RECORDS OF BROWARD COUNTY, FLORIDA. (AS TO PARCEL 29 OF PLAT BOOK 15, PAGE 187, OF THE PUBLIC RECORDS OF BROWARD COUNTY, FLORIDA.)
7. EASEMENT TO FLORIDA POWER & LIGHT COMPANY, DATED AUGUST 3, 1965, AND RECORDED SEPTEMBER 13, 1965, IN OFFICIAL RECORDS BOOK 3081, PAGE 68, IN THE PUBLIC RECORDS OF BROWARD COUNTY, FLORIDA. (AS TO PARCEL 29 OF PLAT BOOK 15, PAGE 187, OF THE PUBLIC RECORDS OF BROWARD COUNTY, FLORIDA.)
8. EASEMENT TO FLORIDA POWER & LIGHT COMPANY, DATED AUGUST 3, 1965, AND RECORDED SEPTEMBER 13, 1965, IN OFFICIAL RECORDS BOOK 3081, PAGE 68, IN THE PUBLIC RECORDS OF BROWARD COUNTY, FLORIDA. (AS TO PARCEL 29 OF PLAT BOOK 15, PAGE 187, OF THE PUBLIC RECORDS OF BROWARD COUNTY, FLORIDA.)
9. EASEMENT TO FLORIDA POWER & LIGHT COMPANY, DATED AUGUST 3, 1965, AND RECORDED SEPTEMBER 13, 1965, IN OFFICIAL RECORDS BOOK 3081, PAGE 68, IN THE PUBLIC RECORDS OF BROWARD COUNTY, FLORIDA. (AS TO PARCEL 29 OF PLAT BOOK 15, PAGE 187, OF THE PUBLIC RECORDS OF BROWARD COUNTY, FLORIDA.)
10. EASEMENT TO FLORIDA POWER & LIGHT COMPANY, DATED AUGUST 3, 1965, AND RECORDED SEPTEMBER 13, 1965, IN OFFICIAL RECORDS BOOK 3081, PAGE 68, IN THE PUBLIC RECORDS OF BROWARD COUNTY, FLORIDA. (AS TO PARCEL 29 OF PLAT BOOK 15, PAGE 187, OF THE PUBLIC RECORDS OF BROWARD COUNTY, FLORIDA.)

THIS IS CERTIFY THAT THIS MAP OR PLAN AND THE SURVEY ON WHICH IT IS BASED WERE MADE IN ACCORDANCE WITH THE 2011 MINIMUM STANDARD DETAIL REQUIREMENTS FOR ALTA/ACSM LAND TITLE SURVEYS, JOINTLY ESTABLISHED AND ADOPTED BY ALTA AND NSPS, AND INCLUDES ITEMS 1, 2, 3, 4, 5, 7(G), 8, 9, 11(G) AND 14 OF TABLE A THEREOF. THE FIELD WORK WAS COMPLETED ON AUGUST 21 OF 2014.

THE PROPERTY DESCRIBED HEREON IS TRUE AND CORRECT TO THE BEST OF MY KNOWLEDGE AND BELIEF AS RECENTLY SURVEYED AND DRAWN UNDER MY SUPERVISION AND DIRECTION. THIS SURVEY COMPLES WITH THE MINIMUM TECHNICAL STANDARDS ADOPTED BY THE FLORIDA STATE BOARD OF SURVEYORS AND MAPPERS PURSUANT TO CHAPTER SJ-17, FLORIDA ADMINISTRATIVE CODE.

Schwabke-Shiskin & Associates, Inc.
JOSE G. HERMANDEZ ASSISTANT VICE-PRESIDENT
PROFESSIONAL LAND SURVEYOR NO. 6952
STATE OF FLORIDA

This is a "Boundary Survey."
Elevations shown hereon refer to North American Vertical Datum of 1988 (N.A.V.D. 1988)

"ALTA / ACSM LAND TITLE SURVEY"
Prepare for: The Related Group
Tracts 4 and 5 and portions of Tracts 1, 2, and 3, of "Burnham's Subdivision", according to the Plat thereof, as recorded in Plat Book 15 at Page 29, of the Public records of Broward County, Florida.

Section 10, Township 50 South, Range 42 East.

Table with 2 columns: Date, Remarks. Includes dates from 6-30-05 to 10-09-14 and various survey notes.

NOTE: Authentic copies of this drawing will bear the raised seal of the attesting Professional Land Surveyor or Professional Engineer.

Schwabke-Shiskin & Associates, Inc.
LAND PLANNERS • ENGINEERS • LAND SURVEYORS (LB#87)
3240 CORPORATE WAY MIRAMAR, FLORIDA • 33025 • TEL. NO. (954) 435-7010 • FAX NO. (954) 438-3288

Professional Engineer information fields: Registered Land Surveyor No., State of Florida, Registered Engineer No., State of Florida, Date, Scale, Sheet No. of 1 Sheet.