



HISTORIC PRESERVATION BOARD MEETING

THE NEW RIVER CASTLE HISTORIC LANDMARK DESIGNATION

CASE NUMBER UDP-HPD21001

4 OCTOBER 2021

**Presented by Michaela M. Conca
Broward Trust for Historic Preservation, Inc.**

Historical Designation Criterion

- (a) Its value as a significant reminder of the cultural or archeological heritage of the city, state, or nation



Physical Location –

- On the south bank of the New River in the neighborhood of Tarpon River.
- Within the original 1-1.5 square mile tract of early Fort Lauderdale, aka New River Settlement
- The Town of Fort Lauderdale Survey (1895): The New River Castle location is Block 36, Lots 11 and 12.

"Even though buildings may be of historical rather than architectural significance, these tangible elements embody their significance for association with specific events or persons. Moreover, it is those tangible elements, both on the exterior and interior, that should be preserved."

Nelson Lee, H. – U.S. Department of the Interior, (1988)



History of Ownership -

- 1873 Mary Brickell and William B. Brickell
- 1910 Carlton Marshall (1872 – 1917)
- 1921 W.B. Snyder and Fred A. Barrett (husband of Juliet Bryan, daughter of Philemon Bryan, one of the early pioneers of Fort Lauderdale)
- 1921 George E. Miller (owner, Las Olas Hotel)
- 1937 C.R. Geraghty
- 1973 Charles Norman
- 1979 Hamilton Forman
- 2007 Sally Joyner
- 2021 Cole Properties & Land, LLC

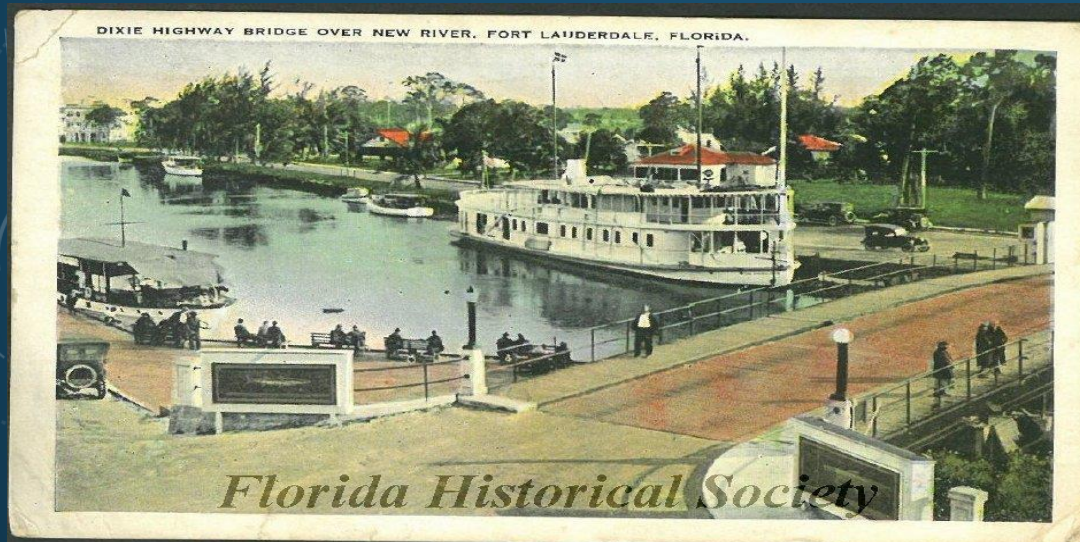
"I thought I knew Fort Lauderdale. I knew the way you come into it, following the curve of the Dixie Highway which suddenly straightens out. To cross the bridge over the New River, Where any number of smart yachts wink there shining brass-work at you as they taken an oil or gasoline at the city dock. I knew the trim streets of new, clean-looking business blocks and the fine proportions of the Broward Hotel. I knew that diners in the charming metropolitan restaurant of the Broward Hotel were produced by one of the best chefs up and down the East coast, and I knew that you could count on seeing dozens of Miami people enjoying them there any night and Sunday. I knew a few Fort Lauderdale people, and I knew them as intelligent and energetic, and cultured. But the other day. I found that I had not even begun to know Fort Lauderdale¹⁴."



Marjorie Stoneman Douglas, Author

Cultural Heritage -

- Early settlers of Fort Lauderdale impact in the geographically distinct Tarpon River neighborhood, Fort Lauderdale.
 - the Marshall family
 - the Brickell family
 - Bryan/Barrett family



Historical Designation Criterion

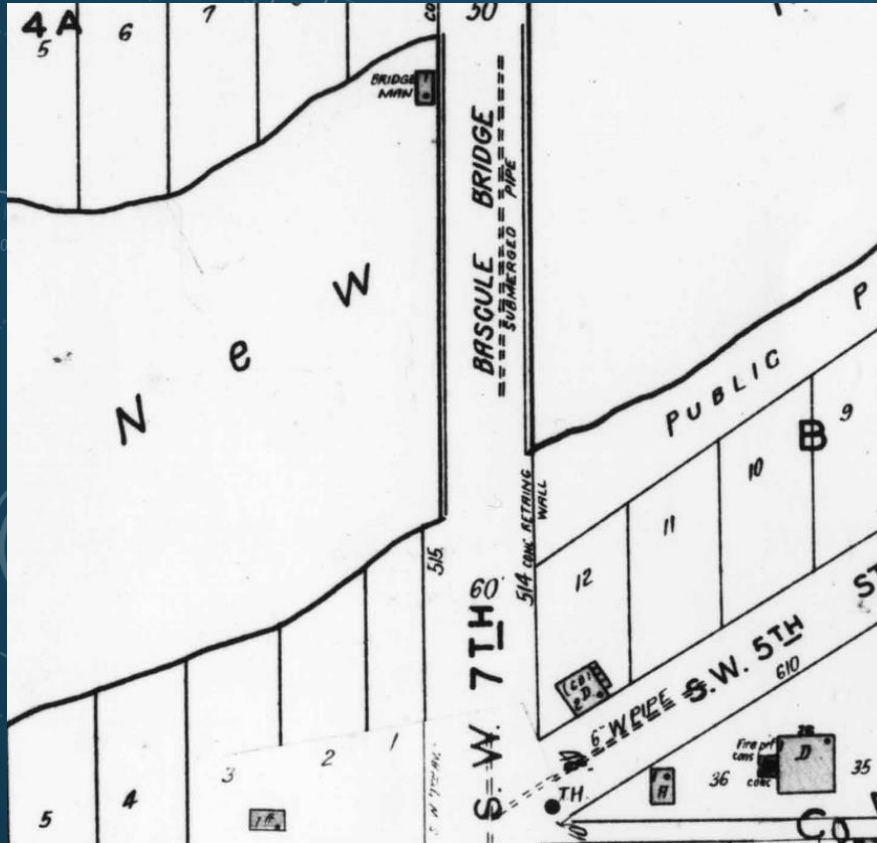
(f) Its distinguishing characteristic of an architectural style is valuable for the study of a period, method of construction, or use of indigenous materials.



Discriminating Details –

- Unique Masonry “Castle” Exterior
- Romanesque/Gothic Style
- Semi-circular Arches
- Conical shaped Turrets

Significant contribution of 1920's Construction of three (3) Bascule Style Bridge(s) to Early development and growth of the City of Fort Lauderdale and the Fort Lauderdale Transportation Network



Time Period -

- 1927 The Colee Avenue Bridge (3rd Bascule Style Bridge) built to connect North and South Banks of New River
- Colee Avenue Bridge Tender's "hut" constructed on current site of the New River Castle property

1974 Broward County 18th Annual Craftsmanship Award for construction of New River Castle structure is "...recognized for excellence of its coral work."

Broward County chapter American Institute of Architects,
Broward chapter Florida Engineering Society,
Broward Builders Exchange



Use of Indigenous Material(s) –

- Sawed Coral Rock Marine Limestone and Coral rubble used in exterior façade
- Florida's excessive amount of limestone proves it was once underwater as only compression of marine sediments can form limestone



THE NEW RIVER CASTLE DESERVES HISTORIC LANDMARK DESIGNATION

QUESTIONS

???

