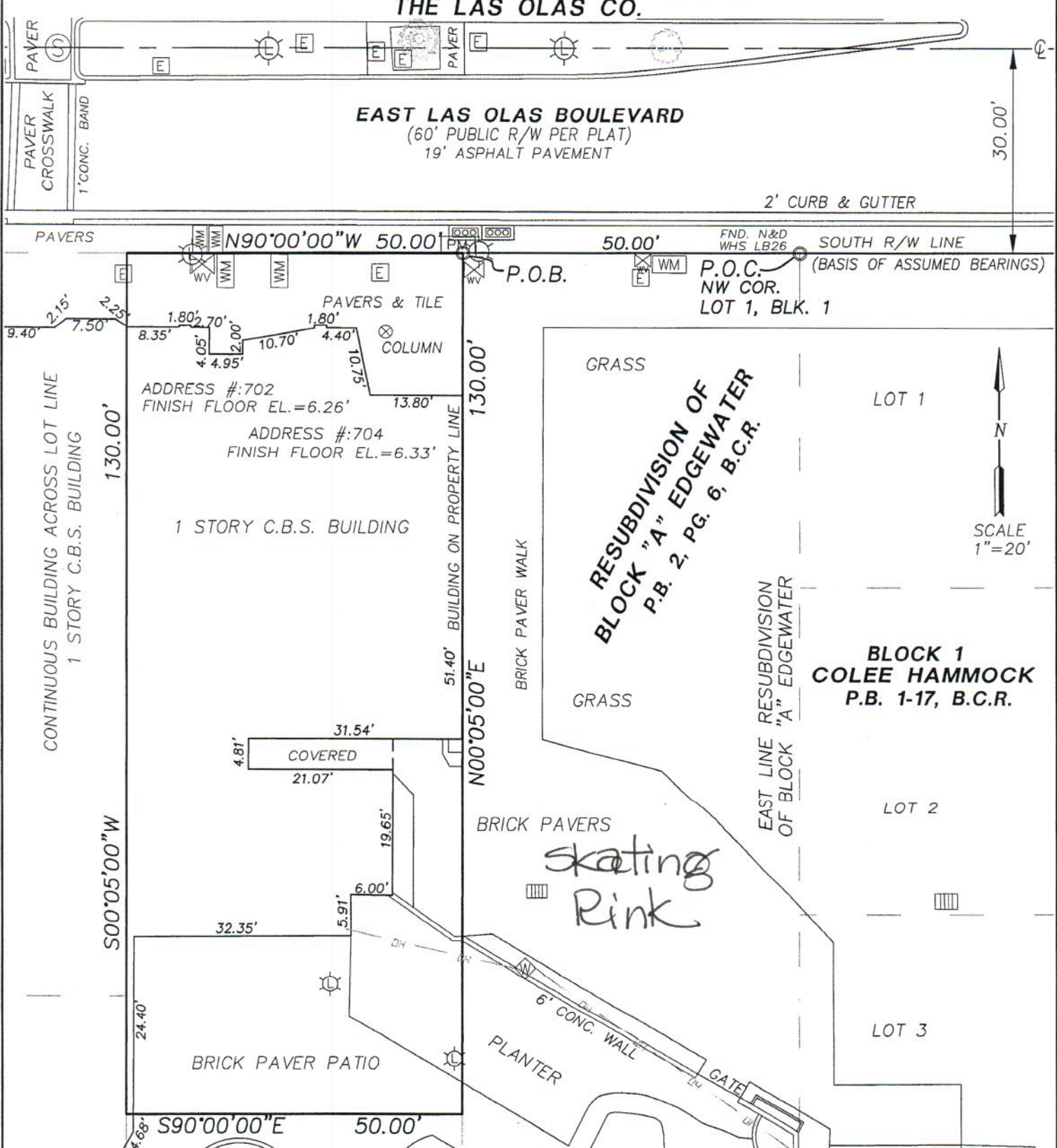


**BOUNDARY SURVEY  
702 & 704 E. LAS OLAS BOULEVARD  
THE LAS OLAS CO.**

**EAST LAS OLAS BOULEVARD**  
(60' PUBLIC R/W PER PLAT)  
19' ASPHALT PAVEMENT



**AWN DESIGN & CONSULTING GROUP, INC.**



**SURVEYORS - MAPPERS - DESIGNERS**  
2611 N.E. 50TH STREET  
LIGHTHOUSE POINT, FLORIDA 33064

LB: 7260 PHONE: (954) 481-8682 FAX: (954) 571-2474

SHEET 2 OF 2

DATE OF SKETCH	DRAWN BY	CHECKED BY	DRAWING NAME
5/12/11	SMW	SMW	702-704ELOB.dwg