

PLAN NOT TO SCALE

KEY:

- Indicates 6' fence with vision screen.
- Indicates reflective barricade drum with tire ring base.
- Indicates waterfilled barrier wall with 5' fence panel.
- Indicates Type III Barricade
- Indicates Work Zone Signage

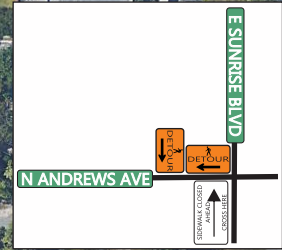
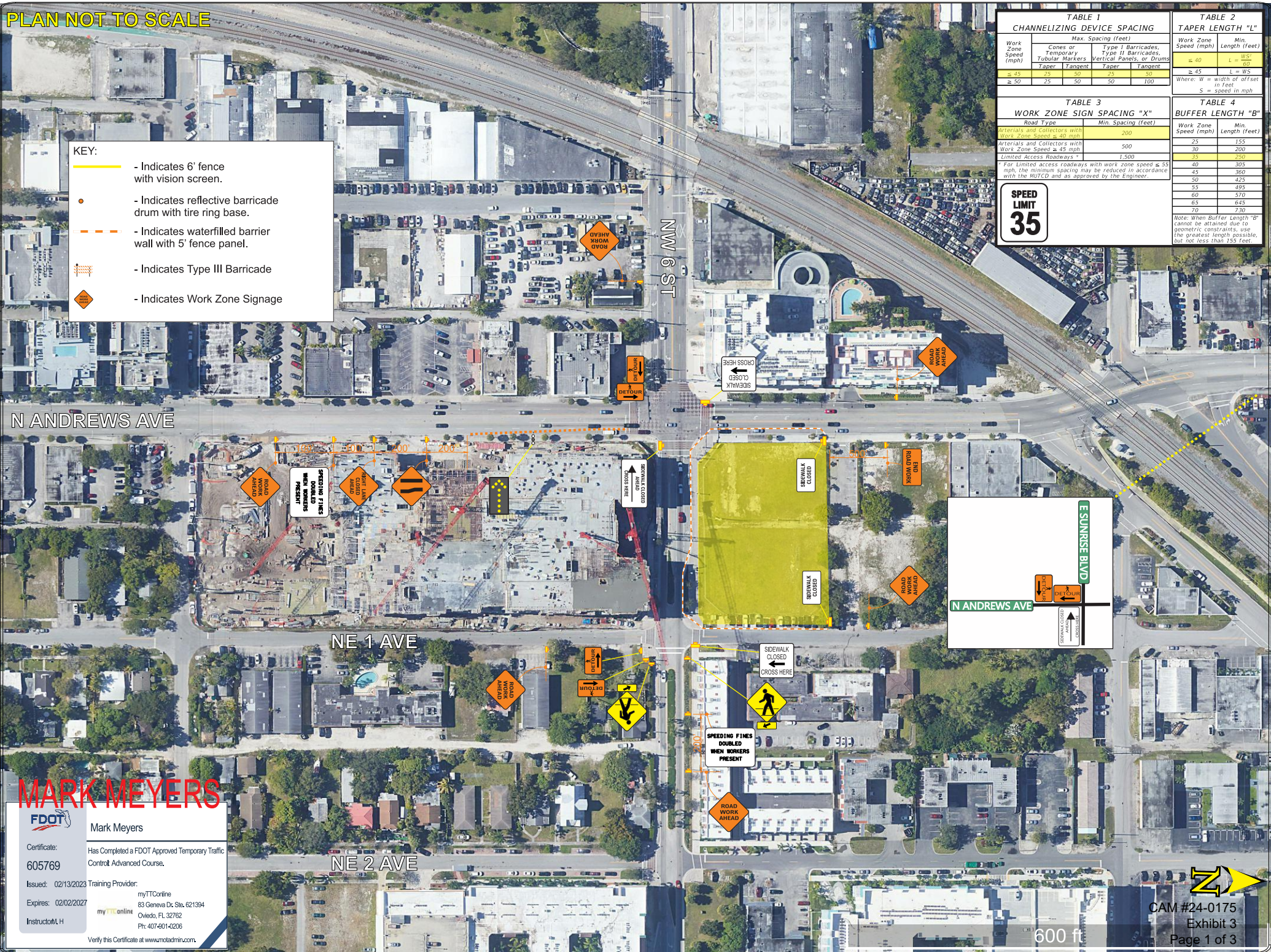
TABLE 1 CHANNELIZING DEVICE SPACING			TABLE 2 TAPER LENGTH "L"	
Work Zone Speed (mph)	Max. Spacing (feet)		Work Zone Speed (mph)	Min. Length (feet)
	Cones or Temporary Tubular Markers	Type I Barricades, Type II Barricades, Vertical Panels, or Drums	≤ 40	L = WS ²
	Taper	Tangent Taper	≤ 45	L = WS
≤ 45	25	50	25	50
≤ 50	25	50	50	100

Where: W = width of offset in feet
S = speed in mph

TABLE 3 WORK ZONE SIGN SPACING "X"			TABLE 4 BUFFER LENGTH "B"	
Road Type	Min. Spacing (feet)		Work Zone Speed (mph)	Min. Length (feet)
Arterials and Collectors with Work Zone Speed ≤ 40 mph	200		25	155
Arterials and Collectors with Work Zone Speed ≥ 45 mph	500		30	200
Limited Access Roadways	1,500		35	250
For limited access roadways with work zone speed ≤ 35 mph, the minimum spacing may be reduced in accordance with the MUTCD and as approved by the Engineer.				
			40	305
			45	360
			50	425
			55	495
			60	570
			65	645
			70	730

Note: When Buffer Length "B" cannot be attained due to geometric constraints, use the greatest length possible, but not less than 155 feet.

SPEED LIMIT 35



MARK MEYERS

FDOT Mark Meyers

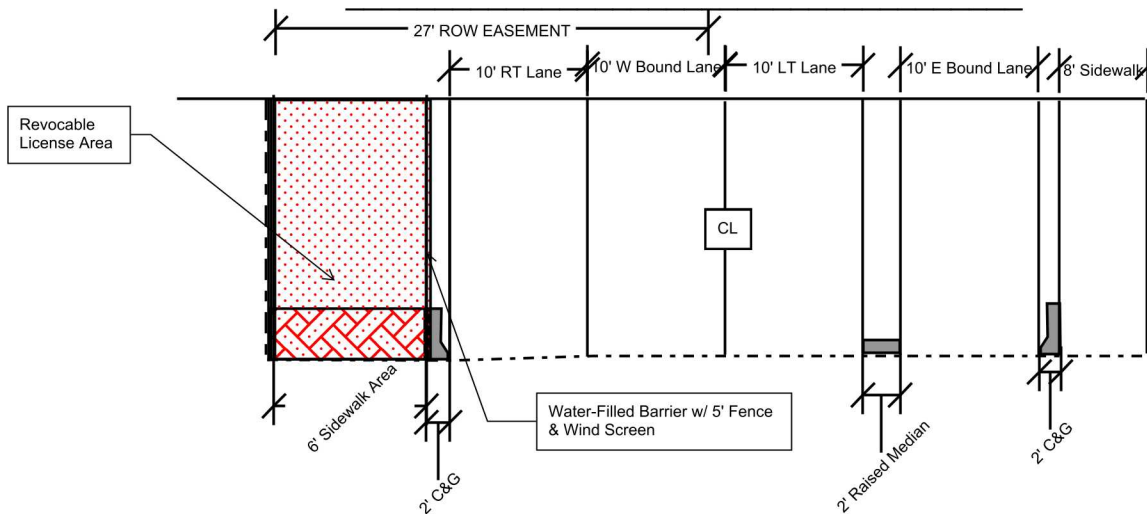
Certificate: 605769
Has Completed a FDOT Approved Temporary Traffic Control Advanced Course.

Issued: 02/13/2023 Training Provider: myTTConline
83 Geneva Dr. Ste. 621394
Oviedo, FL 32762
Ph: 407-601-4206

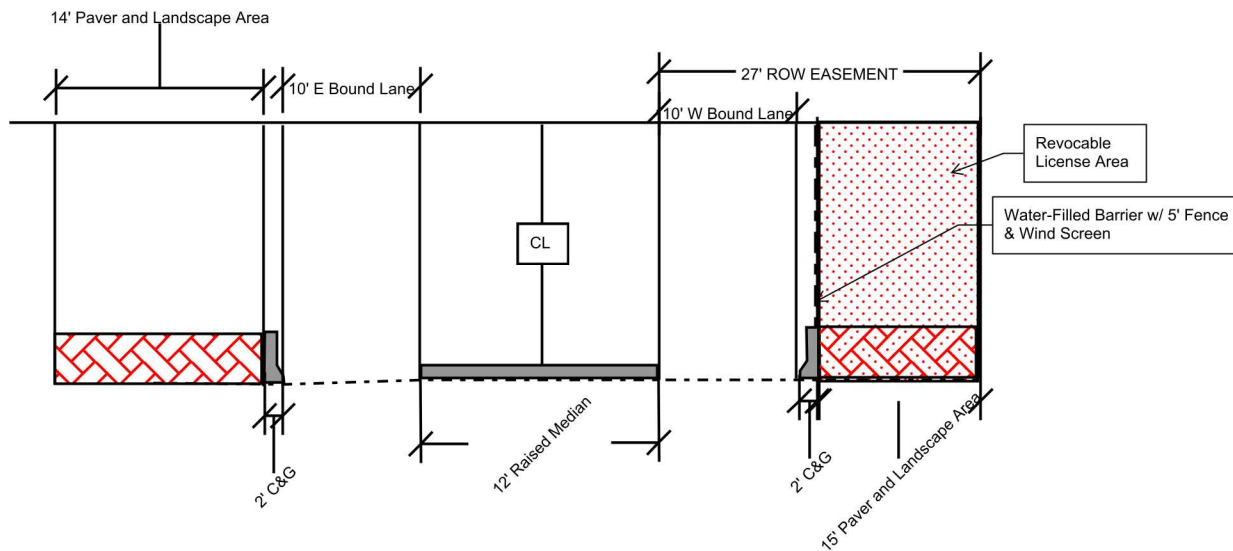
Expires: 02/02/2027

Verify this Certificate at www.motadmin.com.

ROW and 27' ROW Easement
(NE 6th Street/Sistrunk Blvd) (Looking East)



ROW and 27' ROW Easement
(NE 6th Street/Sistrunk Blvd) (Looking West)



Revocable License Area NE 1st Avenue Looking North

