

PLAN NOT TO SCALE

- KEY:
- Indicates 6' fence with vision screen.
 - Indicates reflective barricade drum with tire ring base.
 - Indicates waterfilled barrier wall with 5' fence panel.
 - Indicates Type III Barricade
 - Indicates Work Zone Signage

TABLE 1 CHANNELIZING DEVICE SPACING			
Work Zone Speed (mph)	Max. Spacing (feet)		
	Cones or Temporary Tubular Markers	Type I Barricades, Type II Barricades, Vertical Panels, or Drums	Taper
≤ 40	25	50	25
≤ 45	25	50	50
≤ 50	25	50	100

TABLE 2 TAPER LENGTH "L"			
Work Zone Speed (mph)	Min. Length (feet)	Max. Length (feet)	Formula
≤ 40	150	200	L = WS
≤ 45	150	200	L = WS
≤ 50	150	200	L = WS

Where: W = width of offset in feet
S = speed in mph

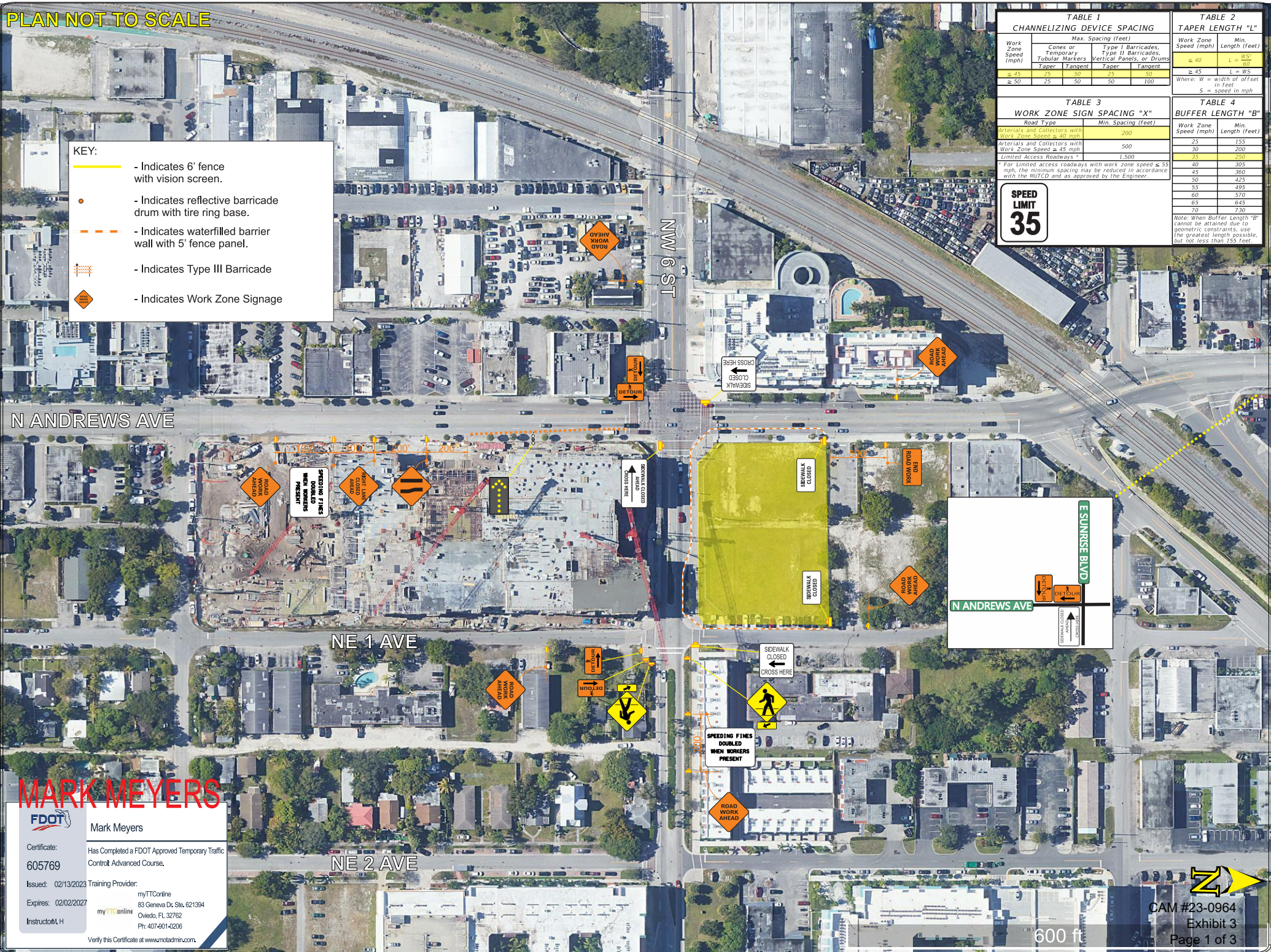
TABLE 3 WORK ZONE SIGN SPACING "X"			
Road Type	Min. Spacing (feet)	Max. Spacing (feet)	Formula
Arterials and Collectors with Work Zone Speed ≤ 40 mph	200	200	X = WS
Arterials and Collectors with Work Zone Speed ≤ 45 mph	200	200	X = WS
Limited Access Roadways	1,500	1,500	X = WS

* For Limited access roadways with work zone speed ≤ 50 mph, the minimum spacing may be reduced in accordance with the MUTCD and as approved by the Engineer.

TABLE 4 BUFFER LENGTH "B"			
Work Zone Speed (mph)	Min. Length (feet)	Max. Length (feet)	Formula
25	155	155	B = WS
30	200	200	B = WS
35	250	250	B = WS
40	305	305	B = WS
45	360	360	B = WS
50	425	425	B = WS
55	495	495	B = WS
60	570	570	B = WS
65	645	645	B = WS
70	730	730	B = WS

Note: When Buffer Length "B" cannot be attained due to geometric constraints, use the greatest length possible, but not less than 155 feet.

SPEED LIMIT
35



MARK MEYERS

FDOT
Mark Meyers

Certificate: 605769
Has Completed a FDOT Approved Temporary Traffic Control Advanced Course.

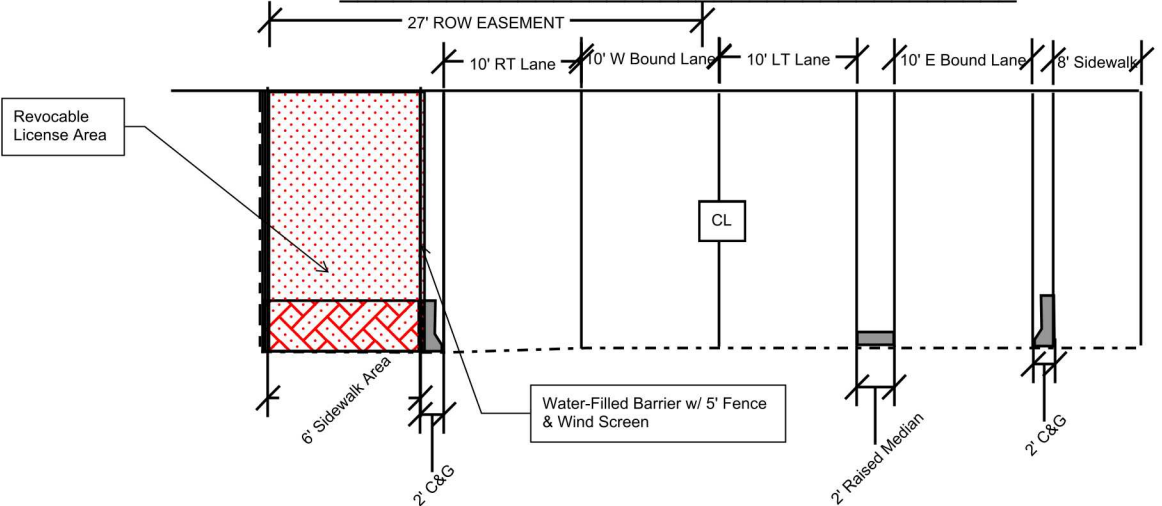
Issued: 02/13/2023 Training Provider: myTTOnline
83 Geneva Dr. Ste. 621394
Oviedo, FL 32762
Ph: 407-601-4206

Expires: 02/02/2027
myTTOnline

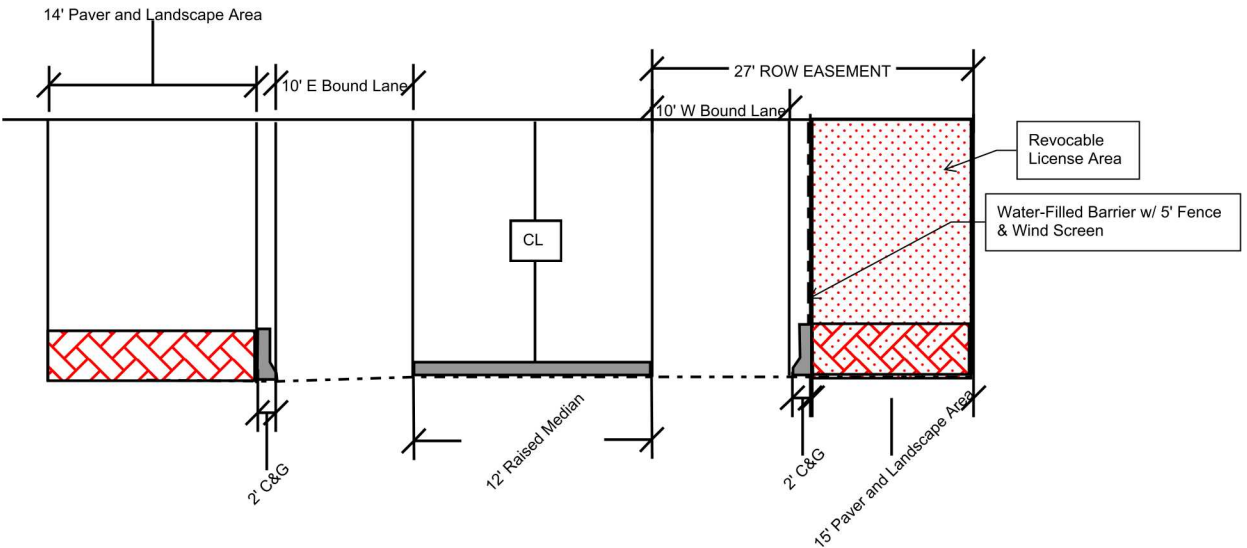
Instructor: H

Verify this Certificate at www.motadmin.com.

ROW and 27' ROW Easement (NE 6th Street/Sistrunk Blvd) (Looking East)



ROW and 27' ROW Easement (NE 6th Street/Sistrunk Blvd) (Looking West)



Revocable License Area NE 1st Avenue Looking North

