



Solicitation 12311-095

Lifeguard Towers

City of Fort Lauderdale



I. INTRODUCTION..... 3

II. EXECUTIVE SUMMARY..... 4

III. EXPERIENCE AND QUALIFICATIONS..... 5

IV. APPROACH TO SCOPE OF WORK..... 6

V. REFERENCES 8

VI. PROPOSAL CERTIFICATION..... 10

VII. COST PROPOSAL 11

VIII. NON COLLUSION STATEMENT..... 12

IX. NON-DISCRIMINATION CERTIFICATION FORM..... 13

X. CONTRACT PAYMENT METHOD..... 14

XI. SAMPLE INSURANCE CERTIFICATE..... 15

XII. SPECIFICATIONS, PLANS AND DRAWINGS 16

XIII. PROJECT TIMELINE..... 18



September 23, 2019

Teresa Wright
City of Fort Lauderdale Procurement Services Division
100 N. Andrews Avenue, #619
Fort Lauderdale, FL 33301
954-828-5963
twright@fortlauderdale.gov

Subject: Solicitation Number: RFP # 12311-095

Dear Ms. Wright,

Bausch Enterprises, Inc. (hereby known as BEI) is pleased to submit its proposal through this hardcopy to the City of Ft. Lauderdale in response to the Request for Proposal (RFP) 12311-095 for Lifeguard Towers.

Bausch Enterprises, Inc. a family-owned and operated business in the Treasure Coast of Florida established in 1996. BEI specializes in OEM production parts, custom aluminum fabrication, specialty projects, and welding repairs. Our four main divisions range from manufacturing aluminum marine products, lifeguard towers, dog agility equipment, and outrigger sales and service.

We believe that our response meets the requirements as called out in this City of Ft. Lauderdale in response to the Request for Proposal (RFP) for Lifeguard Towers., except as annotated in our response. If the City of Ft. Lauderdale in response to the Request for Proposal (RFP) Lifeguard Towers determines that Bausch Enterprises, Inc. response is deficient in any way, BEI respectfully requests to be promptly notified and be given the opportunity to correct any such deficiency. Please forward any questions regarding this solicitation response to me. My contact information is provided below.

On behalf of Bausch Enterprises, Inc., thank you for giving us the opportunity to respond to this RFP and we look forward to continuing a rewarding partnership.

Sincerely,

Todd Bausch,
President of Bausch Enterprises, Inc.
Office: (772)485-5920

Email: todd@bauschenterprises.com

Bausch Enterprises, Inc.
3171 SE Waaler St. Stuart FL 34997
<https://bauschenterprises.com>

Phone: (772) 220-6652
Fax: (772)220-6653
info@bauschenterprises.com



2. Executive Summary

When you have custom or production work that needs to be done professionally and with an eye for quality, look no further than Bausch Enterprises, Inc.

Highly durable Bausch Watch Towers and tower components are built from marine grade aluminum and composite materials. Our lifeguard tower products are modular in design which means they can be broken down for shipping and reassembled on site. This element increases efficiency and product service life. Damaged or worn parts can be replaced or broken down and repaired as opposed to purchasing an entire new tower.

Watch towers are fully customizable with the following accessories:

- Board Boxes
- Secure storage enclosures under the platform
- Solar packages with low voltage lighting, USB outlet, and fans.
- Lightning protection
- Shelving
- Cabinets
- Platform Gates
- Signage
- Footrests
- Umbrella Holders
- Flag Storage
- Storage Hooks
- ATV board racks with medical box storage

We are delighted to work closely with you to help you develop unique designs to include your logos, artwork, or other creative specifications. A range of colorful and artistic designs is possible in addition to the options above. Our original sketches are also available to help you find a creative, functional, and durable lifeguard tower.



3. Experience and Qualifications

Bausch Enterprises, Inc. is prepared to fabricate, deliver and install the requested "Four (4)" Bausch Zero Towers in response to RFQ 12311-095, that will help keep the beaches of Ft. Lauderdale safe for generations to come. We currently employ 19 staff members. Bausch Enterprises, Inc. has been building Lifeguard Towers since 2013 when we won an RFQ to provide Martin County (2401 SE Monterey Road, Stuart, FL 34996 Phone (772) 288-5400), our home county, with Lifeguard Towers to replace the outdated fiberglass units.

Bausch Enterprises, Inc has been fortunate to work with Palm Beach County's Park and Recreation Department; Aquatics Division, Laurie Schobelock, Aquatics Director, telephone (561)966-6600 and Email: lschobel@pbcgov.org, with the manufacture and installation the Lifeguard Towers. BEI has fabricated five (5) watchtowers and two (2) more are awaiting delivery to Peanut Island to replace the outdated fiberglass watchtowers. The total cost of this project is \$58,593.00.

Bausch Enterprises, Inc completed a contract for the Destin Fire Control District located in Destin, Florida. BEI's Point of contact was Joe D'Agostino (850)837-3879 email: jdagostino@destinfire.com. BEI manufactured the requested towers and installed two (2) Aluminum Bausch watch Towers, a Stuart Stand, which is our newest and smallest one-man towers, and a LR Tower (medium sized) with two (2) board boxes and solar system with solar battery, controller and USB ports in 2019. The total cost of the project was \$51,714.00.

Currently Bausch Enterprises, Inc. is working on completing three (3) Zero Towers for the city of Miami, Department of Purchasing, Aquatic program Division. Our Point of Contact with the City of Miami is Daniel Lopez, telephone number: (305)416-1208 and email address of: daniellopez@miamigov.com. BEI is scheduled to complete this project in the next 6 weeks. The project includes three (3) Bausch Zero Towers with 8' platforms. The total cost for this project is \$143,398.00.



4. Approach to the Scope of Work

Bausch Enterprises, Inc. is prepared to fabricate, deliver and install the requested towers at the following specifications.

Design:

- Two (2) Doors. One (1) Facing North the other facing South. Constructed of Aluminum with fixed impact windows protected by accordion shutters. The doors measure 30"x80".
- One (1) horizontal surfboard locker 12' long which is easily accessible and mounted under the standing platform off the support structure.
- Three (3) folding awnings to cover the east, north and south windows to assist with shade and glare. The awnings lock from inside the shelter.
- Minimal view obstructions to allow for 360-degree view of the tower surroundings.
- Towers will have a 12" wide desk in the front of the tower to use as a workstation.

Composition:

- Cross Ventilation is provided by a combination of two (2) side doors, one (1) ventilation hatch and a rear sliding window.
- The tower sits on a heavy wall marine grade 12" wide aluminum channel skids with tow eyes on either end.
- Four (4) stainless steel lifting eyes on the platform and four (4) stainless steel lifting eyes on the roof corners. This feature will allow you to move the structure by dragging or crane. This will not compromise the integrity of the support structure and shelter.
- Walls are structured of 6" wide x 1" thick tongue and groove aluminum which has a hollow air void that provides insulation from the heat and a built-in sound barrier.
- The roof is one (1) piece of solid fiberglass panel with 1" thick high-quality insulation inside the shelter.

Height:

- The total height of the structure is 13' 3".

Ramps:

- The footprint on the skids is 13' x 14'.
- The ramps are 17' long by 36" wide with 1-5/8" O.D. marine grade anodized aluminum pipe railings that will not rust. The ramp and railings are within OSHA mandated guidelines.
- The railings around the deck are 1-5/8" O.D. anodized grade aluminum with two (2) 1-5/16 O.D. anodized intermediate rails for added safety and strength.

Platform:

- The platform measures 12'x12' and is constructed of marine grade aluminum platform extrusions and is decked over with 6" composite faux wood planks that will not rot or

6



deteriorate over time. Gaps between the planks allow for sand removal and air circulation inside the shelter.

Windows:

- The windows are PPG high grade aluminum frame windows with impact glass. The dark tint is in between the layers of glass. Each door has an impact window for increased visibility. The rear sliding window is an aluminum framed impact window as well.
- The three (3) main windows are angled out to reduce glare and are protected by aluminum folding shutters which provide shade.
- The impact resistant door windows are covered by accordion shutters for added protection.
- The back window is horizontal.

Plans: See page 16.

Features:

Modular aluminum construction is powder-coated white. A protective, ceramic coating is applied to the exterior for excellent durability in the marine environment by KBM Corp. of Stuart, Florida (772)288-1865.

- 12' x 12' aluminum platform structure with the decking composed of cellular, PVC decking material (available in several color options). So no rot or deterioration.
- 3, 15-degree windows are approximately 36" tall to offer 50 square feet of viewing area. Windows are aluminum framed with tint in impact glass and available with folding, inside lockable shutters.
- 4 lifting hooks on each corner of shelter structure for movement by crane
- 2, 30" by 80" aluminum doors with impact windows for entry on either side with stainless steel hinges and hardware
- Front-access, aluminum low-angle 17' ramp with anodized aluminum railings on each side
- 36" x 15" Front vent/seat combination
- 36" aft, sliding impact window
- 2, 12" wide skids
- Interior, front-facing composite countertop (may be configured to mount base radio)
- Fiberglass roof panel, one piece and insulated
- Tower flag receiver (mounted per customer specifications)
- Anodized aluminum railing is 36" tall around platform with 2 lower intermediate rails



REFERENCES FOLLOW





MARTIN COUNTY
BOARD OF COUNTY COMMISSIONERS
Fire Rescue Administration
 800 S.E. MONTEREY ROAD • STUART, FL 34994

Telephone: 772-288-5710
 Fax: 772-221-1457
 Email: bbeckett@martin.fl.us

April 9, 2018

DOUG SMITH
 Commissioner, District 1

ED FIELDING
 Commissioner, District 2

HAROLD E. JENKINS II
 Commissioner, District 3

SARAH HEARD
 Commissioner, District 4

EDWARD V. CIAMPI
 Commissioner, District 5

TARYN KRZYDZA, CPM
 County Administrator

SARAH W. WOODS
 County Attorney

To Whom It May Concern:

Martin County Ocean Rescue currently utilizes five Bausch Watch Towers to provide lifeguard services at three of the County's guarded beaches. A replacement lifeguard tower at a fourth beach is now under construction by Bausch Enterprises in Stuart Florida.

From design to quality of construction, Bausch Watch Towers are a great option for South Florida lifeguard agencies looking for a durable and custom replacement for old wood and fiberglass towers.

Sincerely,

Brad Beckett
 Ocean Rescue Chief

BB/mm

TELEPHONE
 772-288-5434
 WEB ADDRESS
<http://www.martin.fl.us>

frd2018L209.docx



Parks and Recreation
 Department
 2700 6th Avenue South
 Lake Worth, FL 33461
 (561) 966-6600
 Email: pbcparks@pbcparks.org
www.pbcparks.com



Palm Beach County
 Board of County
 Commissioners
 Melissa McKinlay, Mayor
 Mack Bernard, Vice Mayor
 Hal R. Valeche
 Paulette Burdick
 Dave Kerner
 Steven L. Abrams
 Mary Lou Berger

County Administrator
 Verdenia C. Baker

"An Equal Opportunity
 Affirmative Action Employer"

Official Electronic Letterhead

April 9, 2018

To Whom it May Concern;

Bausch Enterprises, Inc. built one double guard tower and one single guard tower for Palm Beach County Ocean Rescue. We currently have a second single tower on order. In addition, they have provided custom racks for our ATVs.

The towers and racks they make have all met our specifications and been of a high quality. With each new tower, they have worked closely with our Ocean Rescue staff to improve the functionality of the tower. The Ocean Lifeguards working in these towers find the visibility to be excellent and truly appreciate the attention to design and detail.

If you need additional information, please feel free to contact me.

Regards,

Laurie C. Schobelock
 Aquatics Director



6. Proposal Certification

BID/PROPOSAL CERTIFICATION

Please Note: If responding to this solicitation through BidSync, the electronic version of the bid response will prevail, unless a paper version is clearly marked by the bidder in some manner to indicate that it will supplant the electronic version. All fields below must be completed. If the field does not apply to you, please note N/A in that field.

If you are a foreign corporation, you may be required to obtain a certificate of authority from the department of state, in accordance with Florida Statute §807.1501 (visit <http://www.dos.state.fl.us/>).

Company: (Legal Registration) Bausch Enterprises Inc. EIN (Optional): 65-0633847
Address: 3171 SE Waaler St.
City: Stuart State: FL Zip: 34997
Telephone No. (772) 220-6652 FAX No. 772 220-6653 Email: todd@bauschenterprises.com

Delivery: Calendar days after receipt of Purchase Order (section 1.02 of General Conditions):

Total Bid Discount (section 1.05 of General Conditions):

Check box if your firm qualifies for MBE / SBE / WBE (section 1.09 of General Conditions):

ADDENDUM ACKNOWLEDGEMENT - Proposer acknowledges that the following addenda have been received and are included in the proposal:

Addendum No.	Date Issued	Addendum No.	Date Issued	Addendum No.	Date Issued
<u>1</u>	<u>9/19/19</u>				

VARIANCES: If you take exception or have variances to any term, condition, specification, scope of service, or requirement in this competitive solicitation you must specify such exception or variance in the space provided below or reference in the space provided below all variances contained on other pages within your response. Additional pages may be attached if necessary. No exceptions or variances will be deemed to be part of the response submitted unless such is listed and contained in the space provided below. The City does not, by virtue of submitting a variance, necessarily accept any variances. If no statement is contained in the below space, it is hereby implied that your response is in full compliance with this competitive solicitation. If you do not have variances, simply mark N/A. If submitting your response electronically through BIDSUNC you must also click the "Take Exception" button.

[Empty box for variances]

The below signatory hereby agrees to furnish the following article(s) or services at the price(s) and terms stated subject to all instructions, conditions, specifications addenda, legal advertisement, and conditions contained in the bid/proposal. I have read all attachments including the specifications and fully understand what is required. By submitting this signed proposal I will accept a contract if approved by the City and such acceptance covers all terms, conditions, and specifications of this bid/proposal. The below signatory also hereby agrees, by virtue of submitting or attempting to submit a response, that in no event shall the City's liability for respondent's direct, indirect, incidental, consequential, special or exemplary damages, expenses, or lost profits arising out of this competitive solicitation process, including but not limited to public advertisement, bid conferences, site visits, evaluations, oral presentations, or award proceedings exceed the amount of Five Hundred Dollars (\$500.00). This limitation shall not apply to claims arising under any provision of indemnification or the City's protest ordinance contained in this competitive solicitation.

Submitted by:

Todd Bausch
Name (printed)
9/25/19
Date

Todd Bausch
Signature
President
Title



7. Cost Proposal

COST PROPOSAL PAGE

Proposer Name: Bausch Enterprises, Inc.

Proposer agrees to supply the products and services at the prices bid below in accordance with the terms, conditions and specifications contained in this RFP.

Cost to the City: Contractor shall quote firm, fixed, costs for all services/products identified in this request for proposal. These firm fixed costs for the project include any costs for travel and miscellaneous expenses. No other costs will be accepted.

1. \$42,129.00 per Tower @ 4 = \$168,516.00
2. \$5,249.00 per Installation and Delivery @ 2 = \$10,498.00.

Total Project Cost \$179,014.00

Submitted by:

Todd Bausch
Printed Name

Todd Bausch
Signature



8. Non-Collusion Statement:

**CONTRACTOR'S CERTIFICATE OF COMPLIANCE WITH
NON-DISCRIMINATION PROVISIONS OF THE CONTRACT**

The completed and signed form should be returned with the Contractor's submittal. If not provided with submittal, the Contractor must submit within three business days of City's request. Contractor may be deemed nonresponsive for failure to fully comply within stated timeframes.

Pursuant to City Ordinance Sec. 2-17(a)(i)(ii), bidders must certify compliance with the Non-Discrimination provision of the ordinance.

(a) Contractors doing business with the City shall not discriminate against their employees based on the employee's race, color, religion, gender (including identity or expression), marital status, sexual orientation, national origin, age, disability or any other protected classification as defined by applicable law. Contracts. Every Contract exceeding \$100,000, or otherwise exempt from this section shall contain language that obligates the Contractor to comply with the applicable provisions of this section.

The Contract shall include provisions for the following:

(i) The Contractor certifies and represents that it will comply with this section during the entire term of the contract.

(ii) The failure of the Contractor to comply with this section shall be deemed to be a material breach of the contract, entitling the City to pursue any remedy stated below or any remedy provided under applicable law.

Authorized Signature

9/25/19
Date

Todd Bausch - President

Print Name and Title



9. Non-Discrimination Certification Form

**CONTRACTOR'S CERTIFICATE OF COMPLIANCE
WITH NON-DISCRIMINATION PROVISIONS OF THE
CONTRACT**

The completed and signed form should be returned with the Contractor's submittal. If not provided with submittal, the Contractor must submit within three business days of City's request. Contractor may be deemed non-responsive for failure to fully comply within stated timeframes.

Pursuant to City Ordinance Sec. 2-17(a)(i)(ii), bidders must certify compliance with the Non-Discrimination provision of the ordinance.

- (a) Contractors doing business with the City shall not discriminate against their employees based on the employee's race, color, religion, gender (including identity or expression), marital status, sexual orientation, national origin, age, disability or any other protected classification as defined by applicable law.

Contracts. Every Contract exceeding \$100,000, or otherwise exempt from this section shall contain language that obligates the Contractor to comply with the applicable provisions of this section.

The Contract shall include provisions for the following:

- (i) The Contractor certifies and represents that it will comply with this section during the entire term of the contract.
- (ii) The failure of the Contractor to comply with this section shall be deemed to be a material breach of the contract, entitling the City to pursue any remedy stated below or any remedy provided under applicable law.

Todd Bausch
Authorized Signature

Todd Bausch - President
Print Name and Title

9/25/19
Date



10. Contract Payment Method

CONTRACT PAYMENT METHOD

The City of Fort Lauderdale has implemented a Procurement Card (P-Card) program which changes how payments are remitted to its vendors. The City has transitioned from traditional paper checks to credit card payments via MasterCard or Visa as part of this program.

This allows you as a vendor of the City of Fort Lauderdale to receive your payments fast and safely. No more waiting for checks to be printed and mailed.

In accordance with the contract, payments on this contract will be made utilizing the City's P-Card (MasterCard or Visa). Accordingly, bidders must presently have the ability to accept the credit card or take whatever steps necessary to implement acceptance of a card before the start of the contract term, or contract award by the City.

All costs associated with the Contractor's participation in this purchasing program shall be borne by the Contractor. The City reserves the right to revise this program as necessary. By signing below you agree with these terms.

Please indicate which credit card you prefer.

MasterCard

Visa

Bausch Enterprises Inc.
Company Name

Todd Bausch
Name (Printed)

Todd Bausch
Signature

9/25/19
Date

President
Title



11. Sample Insurance Certificate

		CERTIFICATE OF LIABILITY INSURANCE		DATE (MM/DD/YYYY) 9/9/2019		
<p>THIS CERTIFICATE IS ISSUED AS A MATTER OF INFORMATION ONLY AND CONFERS NO RIGHTS UPON THE CERTIFICATE HOLDER. THIS CERTIFICATE DOES NOT AFFIRMATIVELY OR NEGATIVELY AMEND, EXTEND OR ALTER THE COVERAGE AFFORDED BY THE POLICIES BELOW. THIS CERTIFICATE OF INSURANCE DOES NOT CONSTITUTE A CONTRACT BETWEEN THE ISSUING INSURER(S), AUTHORIZED REPRESENTATIVE OR PRODUCER, AND THE CERTIFICATE HOLDER.</p> <p>IMPORTANT: If the certificate holder is an ADDITIONAL INSURED, the policy(ies) must have ADDITIONAL INSURED provisions or be endorsed. If SUBROGATION IS WAIVED, subject to the terms and conditions of the policy, certain policies may require an endorsement. A statement on this certificate does not confer rights to the certificate holder in lieu of such endorsement(s).</p>						
PRODUCER The Fessler Agency, Inc. 3165 N McMullen Booth Road G-2 Clearwater FL 33761			CONTACT NAME: PHONE (A/C, No, Ext): 727-726-3377 FAX (A/C, No): 727-725-4698 E-MAIL: certs@fessleragency.com ADDRESS:			
INSURED Bausch Enterprises, Inc. PO Box 326 Port Salerno FL 34992-0326			INSURER(S) AFFORDING COVERAGE INSURER A : Auto Owners Insurance Company NAIC # 18988 INSURER B : Southern-Owners Insurance 10190 INSURER C : INSURER D : INSURER E : INSURER F :			
COVERAGES		CERTIFICATE NUMBER: 2031313686		REVISION NUMBER:		
<p>THIS IS TO CERTIFY THAT THE POLICIES OF INSURANCE LISTED BELOW HAVE BEEN ISSUED TO THE INSURED NAMED ABOVE FOR THE POLICY PERIOD INDICATED. NOTWITHSTANDING ANY REQUIREMENT, TERM OR CONDITION OF ANY CONTRACT OR OTHER DOCUMENT WITH RESPECT TO WHICH THIS CERTIFICATE MAY BE ISSUED OR MAY PERTAIN, THE INSURANCE AFFORDED BY THE POLICIES DESCRIBED HEREIN IS SUBJECT TO ALL THE TERMS, EXCLUSIONS AND CONDITIONS OF SUCH POLICIES. LIMITS SHOWN MAY HAVE BEEN REDUCED BY PAID CLAIMS.</p>						
INSR LTR	TYPE OF INSURANCE	ADDITIONAL INSURED	POLICY NUMBER	POLICY EFF (MM/DD/YYYY)	POLICY EXP (MM/DD/YYYY)	LIMITS
S	<input checked="" type="checkbox"/> COMMERCIAL GENERAL LIABILITY <input type="checkbox"/> CLAIMS-MADE <input checked="" type="checkbox"/> OCCUR GEN'L AGGREGATE LIMIT APPLIES PER: <input checked="" type="checkbox"/> POLICY <input type="checkbox"/> PRO-JECT <input type="checkbox"/> LOC OTHER:	Y Y	20368274	1/25/2019	1/25/2020	EACH OCCURRENCE \$ 1,000,000 DAMAGE TO RENTED PREMISES (Per occurrence) \$ 300,000 MED EXP (Any one person) \$ 10,000 PERSONAL & ADV INJURY \$ 1,000,000 GENERAL AGGREGATE \$ 2,000,000 PRODUCTS - COMP/OP AGG \$ 2,000,000 \$
A	AUTOMOBILE LIABILITY <input checked="" type="checkbox"/> ANY AUTO <input type="checkbox"/> OWNED AUTOS ONLY <input type="checkbox"/> SCHEDULED AUTOS <input checked="" type="checkbox"/> HIRED AUTOS ONLY <input checked="" type="checkbox"/> NON-OWNED AUTOS ONLY <input type="checkbox"/> UMBRELLA LIAB <input type="checkbox"/> OCCUR <input type="checkbox"/> EXCESS LIAB <input type="checkbox"/> CLAIMS-MADE DED RETENTION \$	Y Y	4156993901	8/26/2019	8/26/2020	COMBINED SINGLE LIMIT (Per accident) \$ 500,000 BODILY INJURY (Per person) \$ BODILY INJURY (Per accident) \$ PROPERTY DAMAGE (Per accident) \$ PIP \$ 10,000 EACH OCCURRENCE \$ AGGREGATE \$ \$
	WORKERS COMPENSATION AND EMPLOYERS' LIABILITY ANY PROPRIETOR/PARTNER/EXECUTIVE OFFICER/MEMBER EXCLUDED? (Mandatory in NH) If yes, describe under DESCRIPTION OF OPERATIONS below	Y/N	N/A			<input type="checkbox"/> PER STATUTE <input type="checkbox"/> OTHER E.L. EACH ACCIDENT \$ E.L. DISEASE - EA EMPLOYEE \$ E.L. DISEASE - POLICY LIMIT \$
DESCRIPTION OF OPERATIONS / LOCATIONS / VEHICLES (ACORD 101, Additional Remarks Schedule, may be attached if more space is required) City of Miami is included as Additional Insured for General Liability and Auto Liability on a primary and non-contributory basis as required by written contract. Insurance covers Contingent and Contractual Liability and XCU Exposures that are in the absence of the contract or agreement.						
CERTIFICATE HOLDER City of Miami Department of Procurement 444 SW 2nd Avenue, 6th Floor Miami FL 33130			CANCELLATION SHOULD ANY OF THE ABOVE DESCRIBED POLICIES BE CANCELLED BEFORE THE EXPIRATION DATE THEREOF, NOTICE WILL BE DELIVERED IN ACCORDANCE WITH THE POLICY PROVISIONS. AUTHORIZED REPRESENTATIVE 			

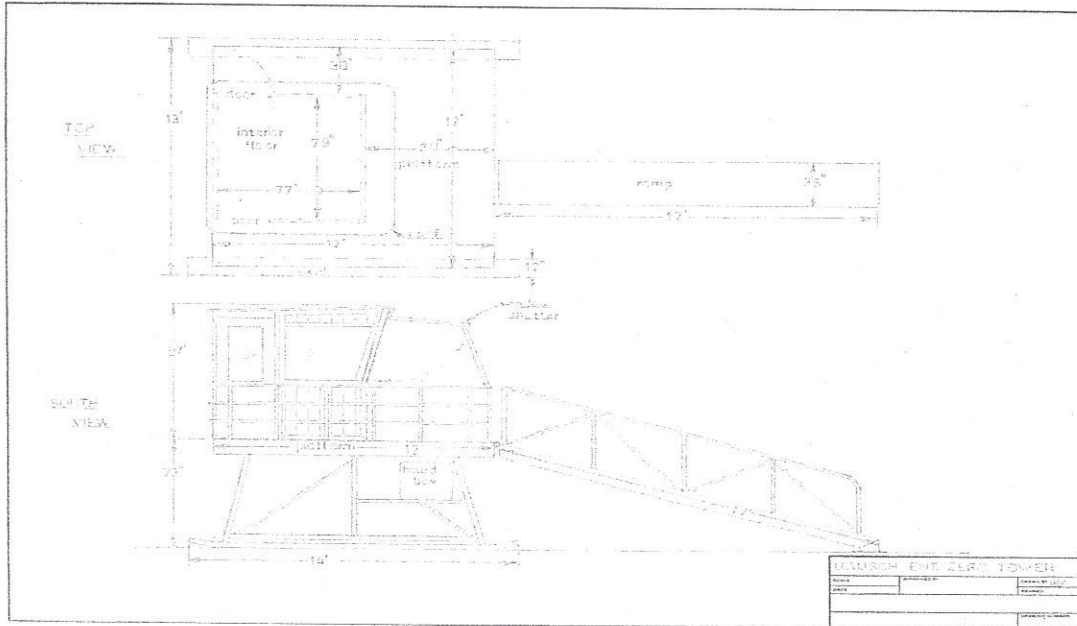
ACORD 25 (2016/03)

© 1988-2015 ACORD CORPORATION. All rights reserved.
 The ACORD name and logo are registered marks of ACORD

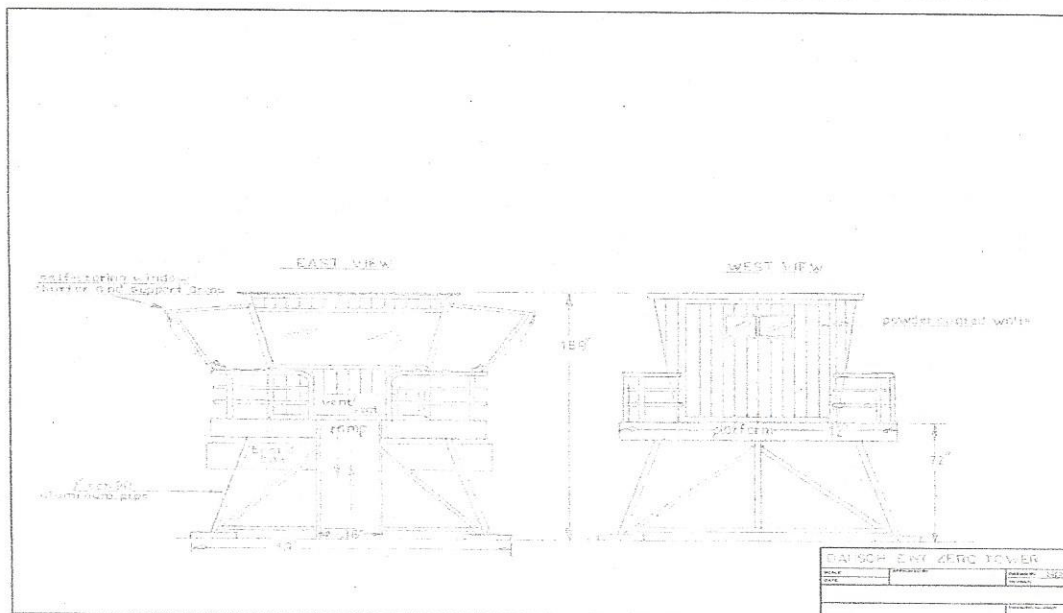


12. Specifications, Plans and Drawings

TOP and SIDE View: BEI ZERO TOWER 1 of 2



EAST and WEST View: BEI ZERO TOWER 2 of 2



Larger plans included

Bausch Enterprises, Inc.
 3171 SE Waaler St. Stuart FL 34997
<https://bauschenterprises.com>

Phone: (772) 220-6652
 Fax: (772)220-6653
info@bauschenterprises.com





13. Project Timeline

	Description of Work	Start and End Dates
Phase One	Approval of the RFQ and Schematics	Awarded Contract
Phase Two	Two (2) towers will be completed, delivered and installed.	75 days from the Notice to proceed
Phase Three	Two (2) towers will be completed, delivered and installed.	60 days from the last install.

Bausch will build the four (4) Lifeguard Towers in Stuart, Florida and transport them to their desired placement sites where the bases will be assembled with the help Sims Crane and Equipment office at 10400 NW South River Dr. Medley, FL 33178 (305)501-1968 . Upon completion of the support structure and base, Sims Crane will be utilized to lift the Tower onto the beach. BEI will work with Fire/Ocean rescue to determine the staging areas along the A1A in the City of Ft. Lauderdale. Bob's Barricades will provide barricades. BEI estimates each tower will take 3-4 hours to complete the onsite setup and install to it's assigned location. BEI will work with the city to determine timing of the delivery and on-site work, preferably in the early morning hours. Traffic control maybe necessary on A1A if the towers are placed in an area without side of road parking or a parking lot is unavailable.

All structural parts are rigid and long-lasting marine grade and will hold up to high impact. The roof is one solid piece of fiberglass to prevent water leaks due to weather.

Our approach is to start two (2) towers upon the notice to proceed, by purchasing materials, ordering components for all four (4) towers and lining up the Subcontractor to coincide with the schedule to complete two (2) towers in 75 days and the following two (2) towers within 60days after install of the last set.

The time to assemble and install two (2) towers is estimated at 6-8 hours. If the final two (2) towers are completed ahead of schedule, BEI will contact the City of Ft. Lauderdale to install at the earliest convenience for both parties.

Todd Bausch
Authorized Signature

9/25/19
Date

Todd Bausch - President

Print Name and Title