



FORT LAUDERDALE PARKS AND RECREATION BOND MASTER PLAN DESIGN & IMPLEMENTATION PROGRAM

**LOCKHART COMMUNITY PARK – COMMISSION CONFERENCE MEETING**  
**OCTOBER 3, 2023**



# AGENDA

1. Site Research
2. Conceptual Site Plan and Recreation Features
3. Preliminary Cost Estimate & Development Schedule
4. Next Steps

# 1. SITE RESEARCH

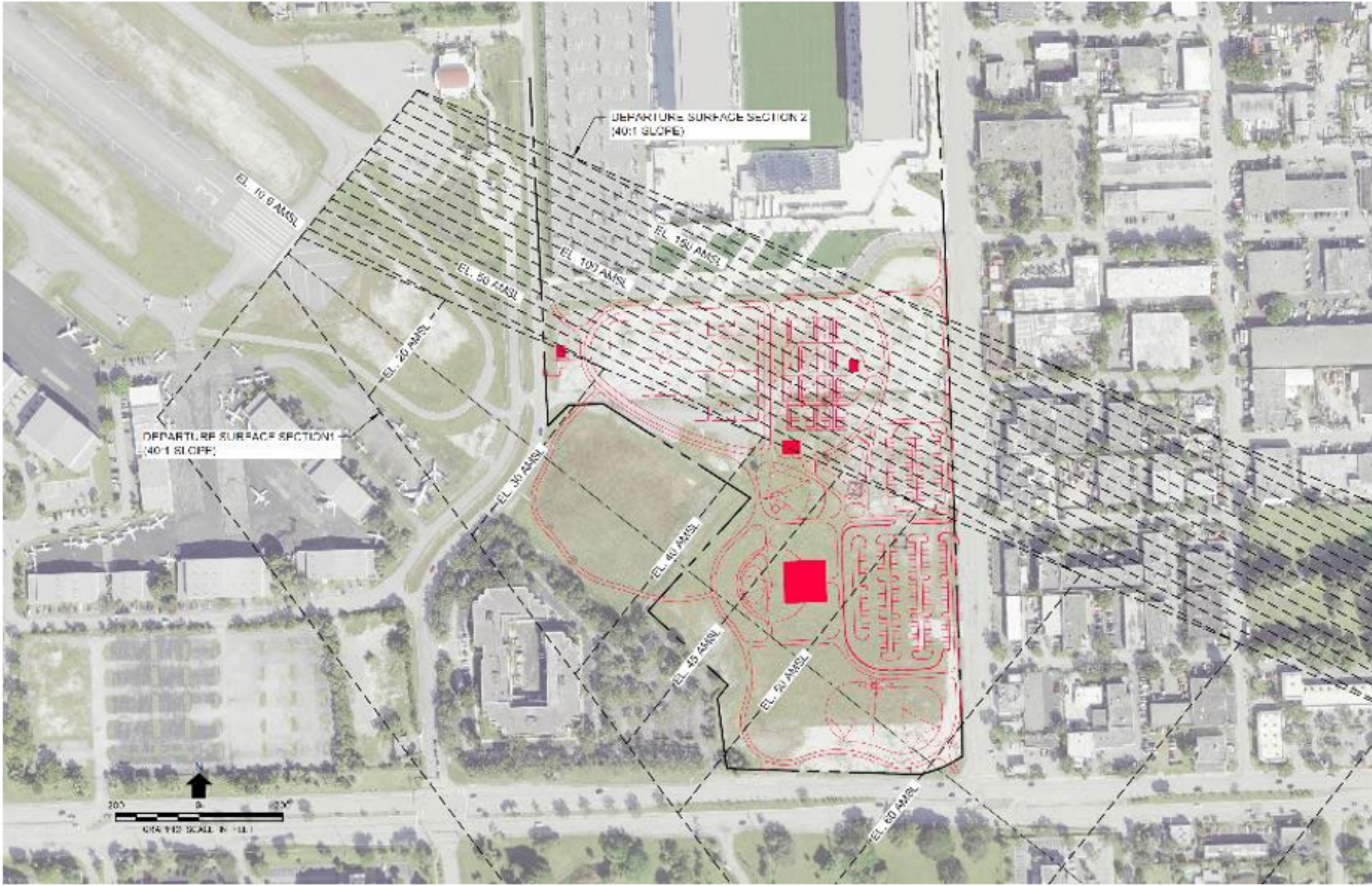


# SITE RESEARCH

- **Discovery / Site Evaluation**
  - Environmental Site Assessment
  - Traffic Evaluation
  - Utility Extension Determination
  - Grading and Drainage
  - Permit Assessment
  - FAA Flight Zone Evaluation



# FAA RESTRICTIONS



## 2. CONCEPTUAL SITE PLAN & RECREATION FEATURES



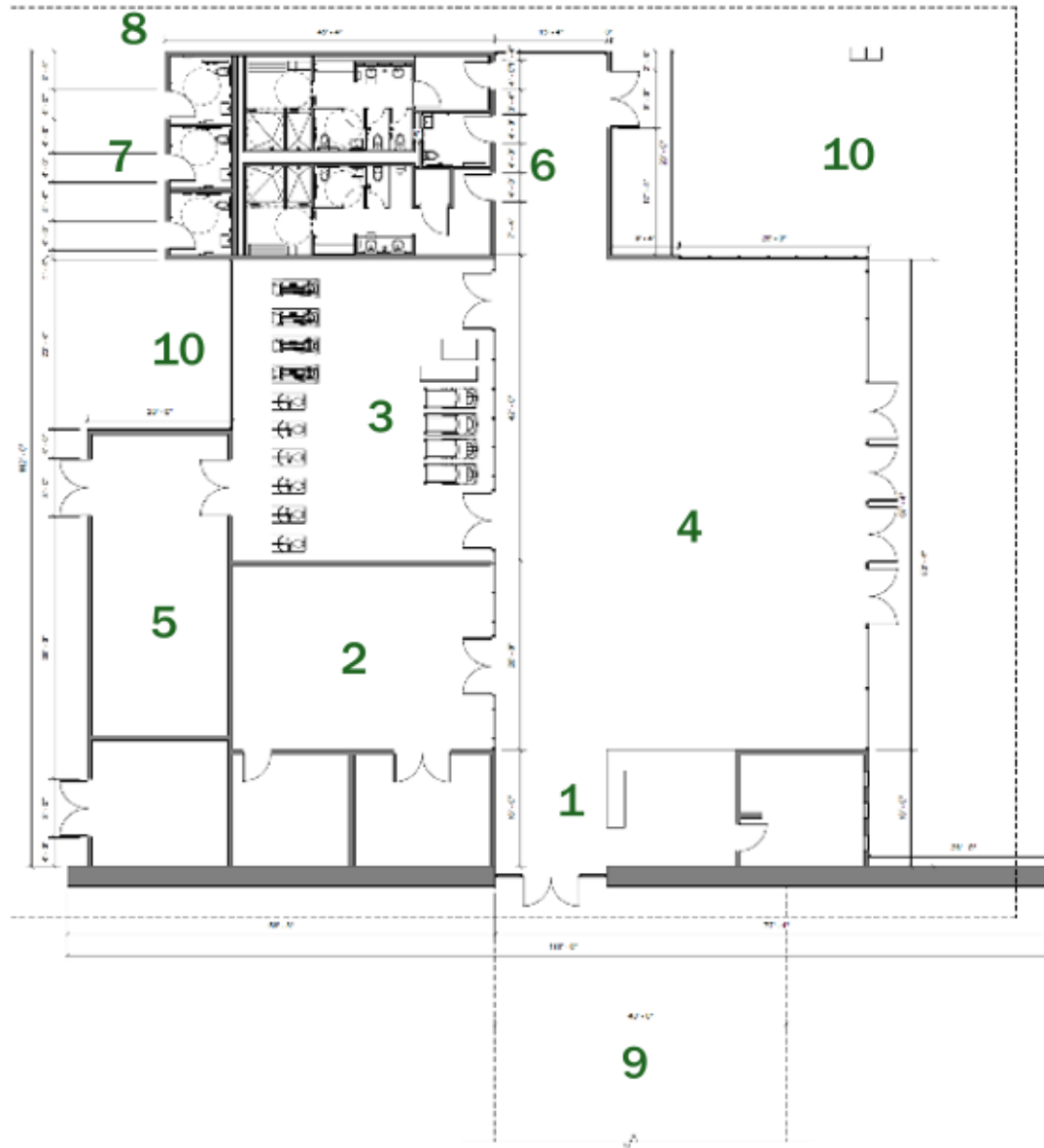
# CONCEPTUAL SITE PLAN



## LEGEND: PROPOSED PARK ELEMENTS

1. COMMUNITY CENTER
2. SPLASH PLAY AREA
3. PLAYGROUND
4. FITNESS AREA
5. DOG PARK
6. MULTIPURPOSE OPEN FIELD
7. SHELTER
8. PICKLEBALL COURTS
9. OPEN GREEN SPACE
10. PASSIVE OPEN SPACE LAWN
11. MAINTENANCE
12. RESTROOM
13. PATHWAYS
14. PAVED PARKING LOT
15. DROP-OFF AREA
16. OVERFLOW GRASS PARKING LOT
17. PEDESTRIAN ACCESS POINT
18. PEDESTRIAN CROSSWALKS
19. DOG-WASHING STATION

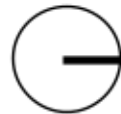
# COMMUNITY CENTER



## Major Program Spaces:

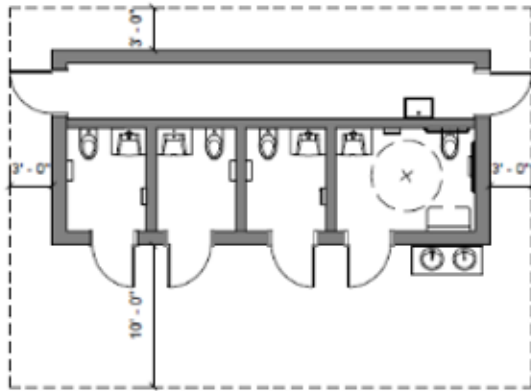
- 1 Entry / Lobby / Admin
- 2 Indoor Play
- 3 Fitness
- 4 Multi-Purpose Room
- 5 Support Spaces
- 6 Restrooms
- 7 Family Restrooms
- 8 Outdoor Handwashing
- 9 Covered Drop-off
- 10 Covered Porch

Community Center  
Area: 10,645 sf

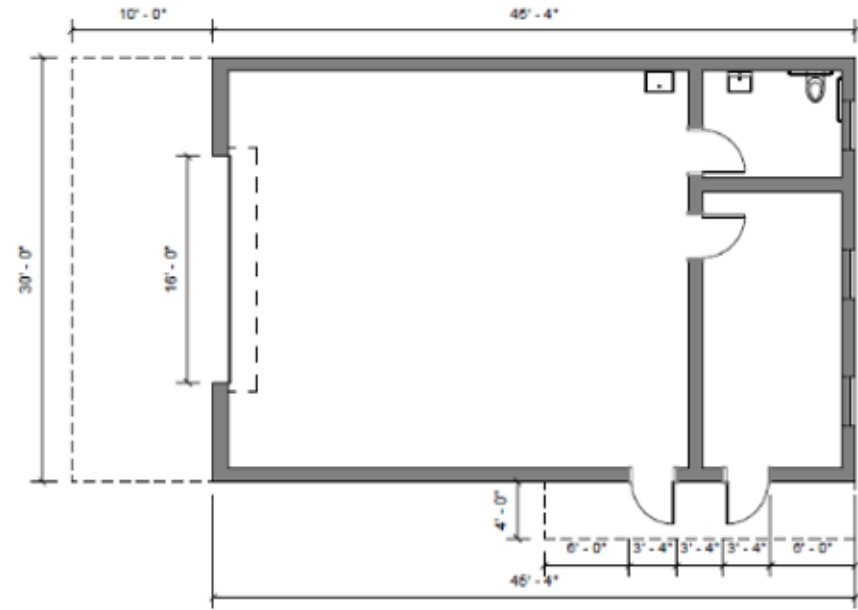




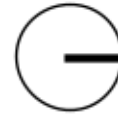
# RESTROOM AND MAINTENANCE



**Park Restrooms**  
Area: 426 sf



**Maintenance Building**  
Area: 1,360 sf



# COMMUNITY CENTER



# COMMUNITY CENTER



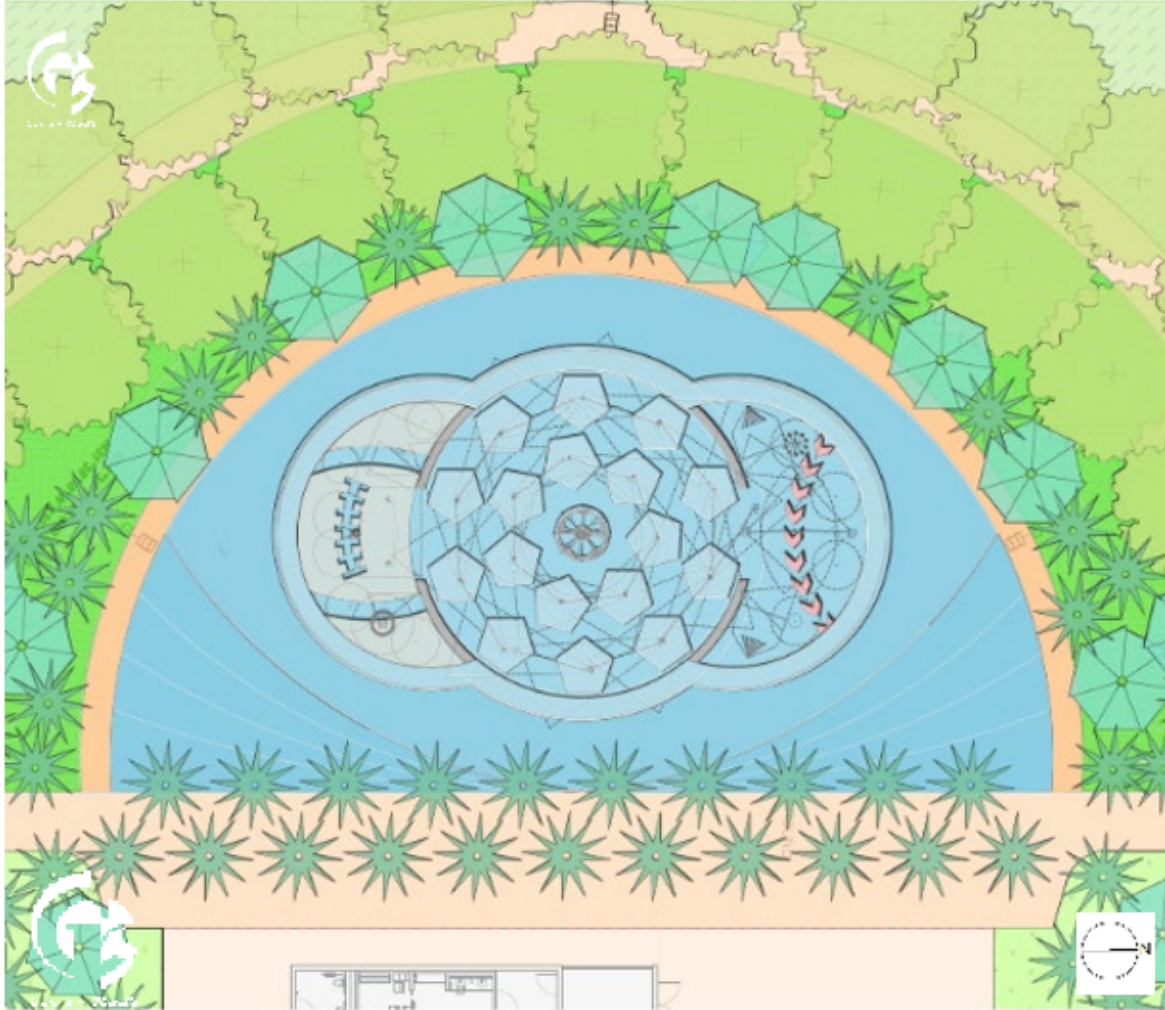
# COMMUNITY CENTER



# SPLASH PLAY AREA

## ROLL ALONG

Sports : Adjacency to DRV PNK Stadium



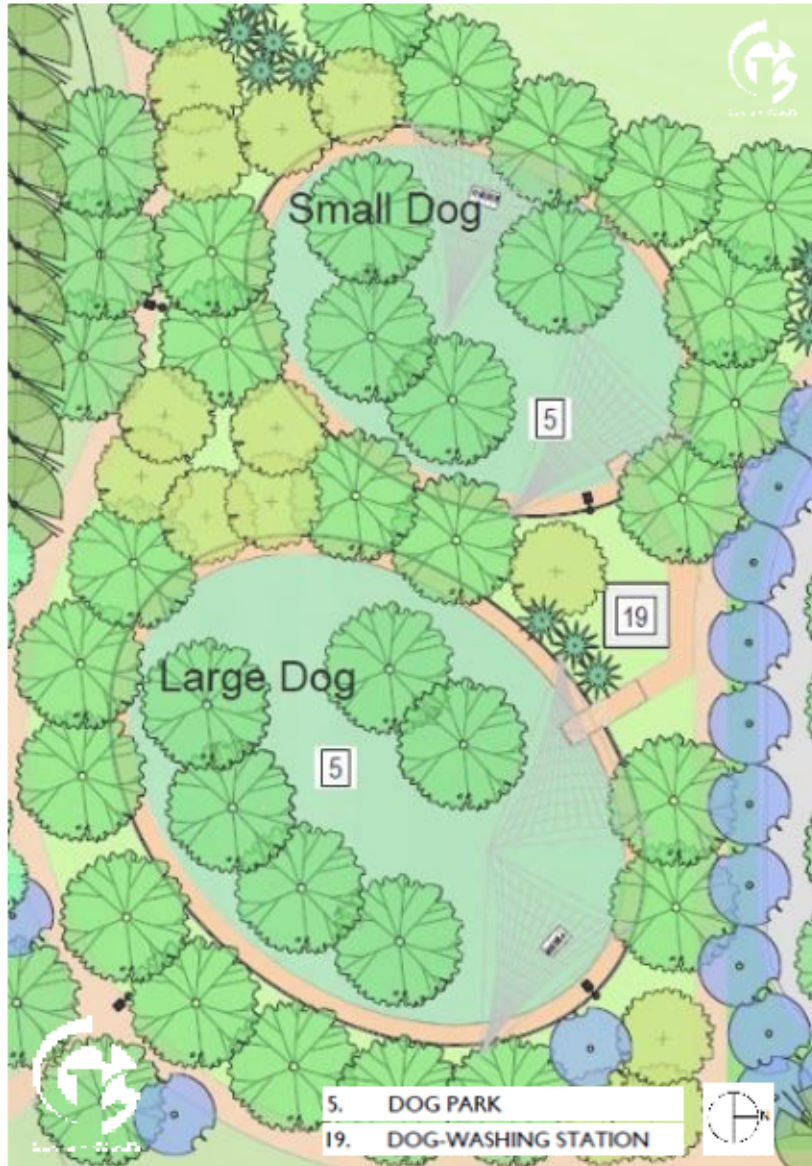
# PLAYGROUND

## FLY HIGH

Flying: Adjacency to Ft. Lauderdale Executive Airport



# DOG PARK AREA



# FITNESS AREA





# PICKLEBALL COURTS

## Shaded Courts with Lighting



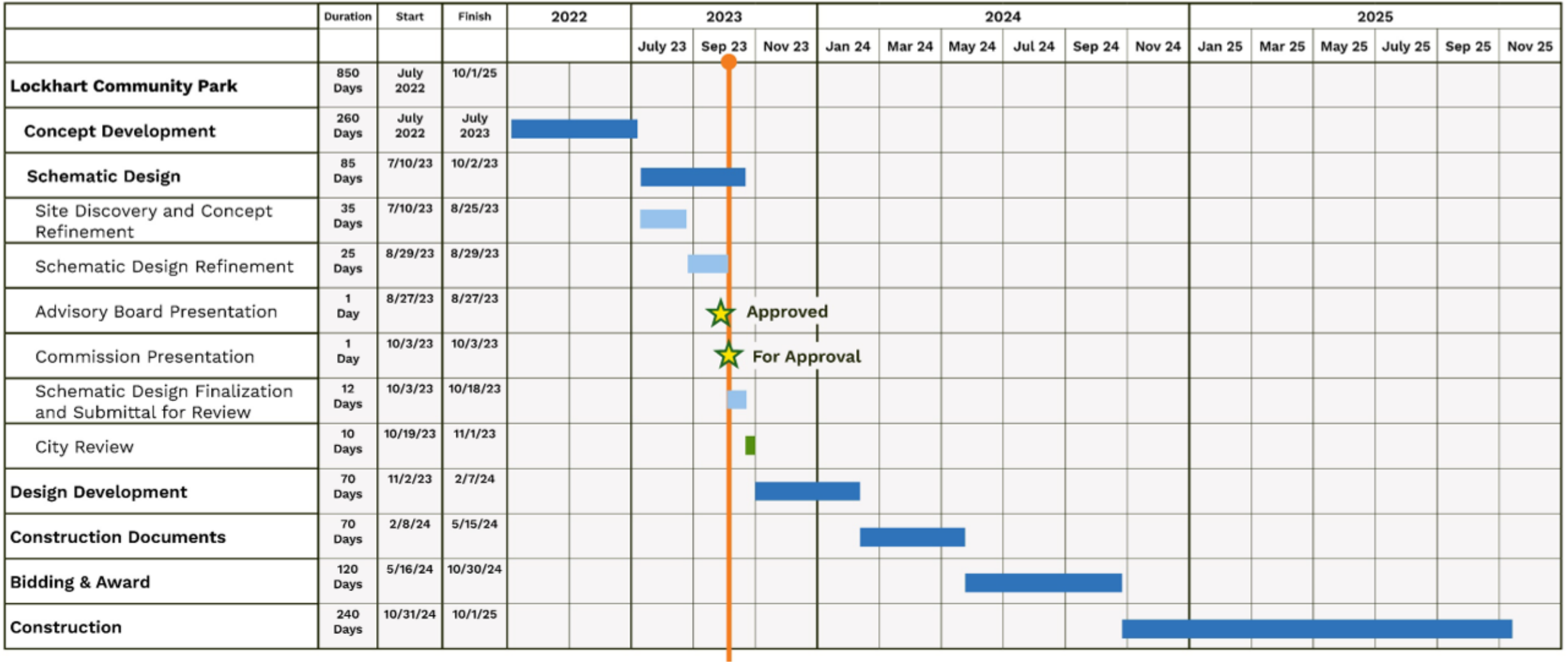
# 3. PRELIMINARY COST ESTIMATES



# PRELIMINARY COST ESTIMATE

Park Element	Total Program Costs	Responsible Party
Erosion Control & Temporary Access	\$38,684	Miami Beckham
Clearing and Grubbing	\$94,074	Miami Beckham
Grading and Drainage	\$4,178,351	Miami Beckham
Playground	\$1,860,932	Miami Beckham
Dog Park	\$1,382,674	Miami Beckham
Multipurpose Playfield	\$1,835,397	Miami Beckham
Lighting	\$365,650	Miami Beckham
Sidewalks	\$2,660,588	Miami Beckham
Paved Parking Lot	\$962,125	Miami Beckham
Park Amenities	\$5,751,088	Miami Beckham
<b>Subtotal</b>	<b>\$19,129,565</b>	
Community Center	\$4,014,877	City
Drop-off Area	\$54,718	City
Overflow Grass Parking Lot	\$512,531	City
Restroom	\$224,153	City
Maintenance Building	\$325,809	City
Water and Sewer	\$1,775,434	City
Splash Pad Area	\$1,278,019	City
Pickleball Courts	\$3,837,209	City
Fitness Station	\$639,320	City
<b>Subtotal</b>	<b>\$12,662,070</b>	City
<b>Total Costs (Nearest \$1,000)</b>	<b>\$31,791,635</b>	

# PRELIMINARY DEVELOPMENT SCHEDULE



# 4. NEXT STEPS



# NEXT STEPS

- **Schematic Design (SD) - 30% Design Completion**
  - SD Facility Drawings
  - SD Site and Landscape Drawings
  - SD Civil Drawings
  - SD Splash Pad Drawings
  - SD Signage and Wayfinding
  - SD Lighting, Electrical, and Technology Design
  - Revised Statement of Probable Construction Cost
  - Refined Development Schedule

Begin Design  
Development Drawings

**THANK YOU!**

