

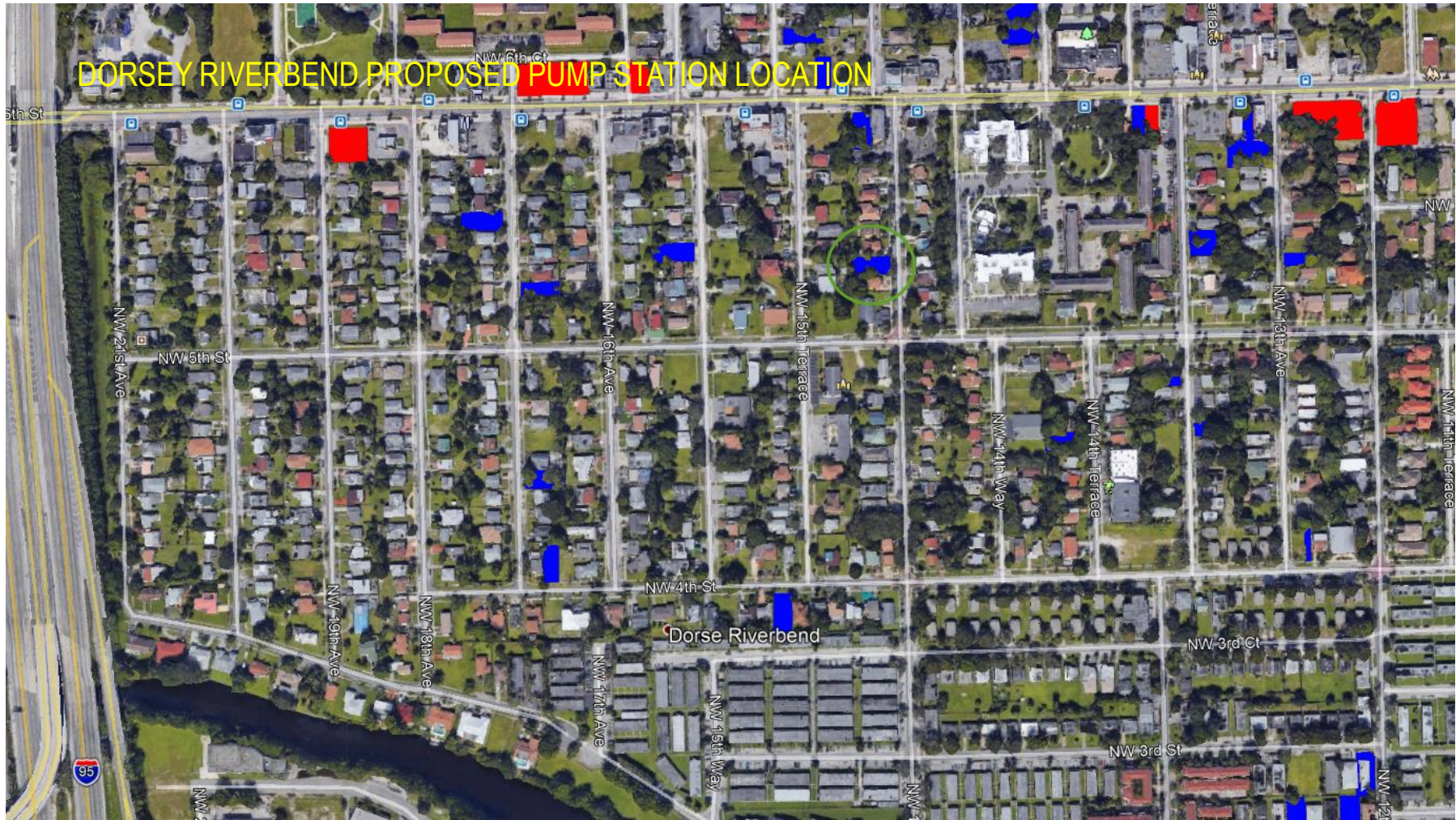
# Summary of Proposed Pump Stations



## Proposed Pump Station Locations

Neighborhood	Number of Pump Stations	Pump Station Location	Land Acquisition Required
<b>Dorsey Riverbend</b>	1	515 NW 15 Ave	No, City Owned
<b>Progresso</b>	2	845 NW 3 <sup>rd</sup> Ave Or 807 NW 3 <sup>rd</sup> Ave.	City Owned plus may need to acquire adjacent property
<b>River Oaks</b>	2	Influent of Preserve Outfall of Preserve	No, City Owned
<b>Southeast Isles</b>	2	Lido Dr Merle Fogg Park	No, City Owned
<b>Victoria Park</b>	1	End (E) of NE 7 <sup>th</sup> St.	No, City Right of Way

DORSEY RIVERBEND PROPOSED PUMP STATION LOCATION

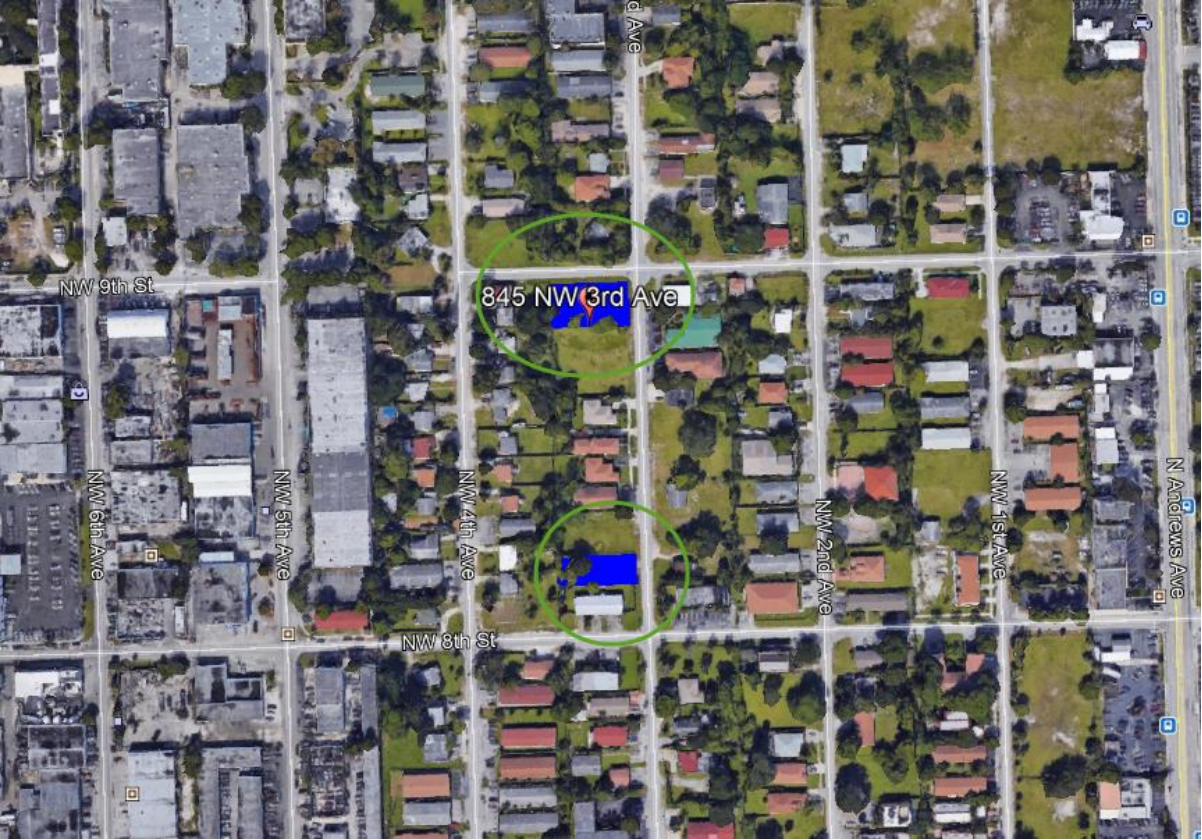


# DORSEY RIVERBEND PROPOSED PUMP STATION LOCATION

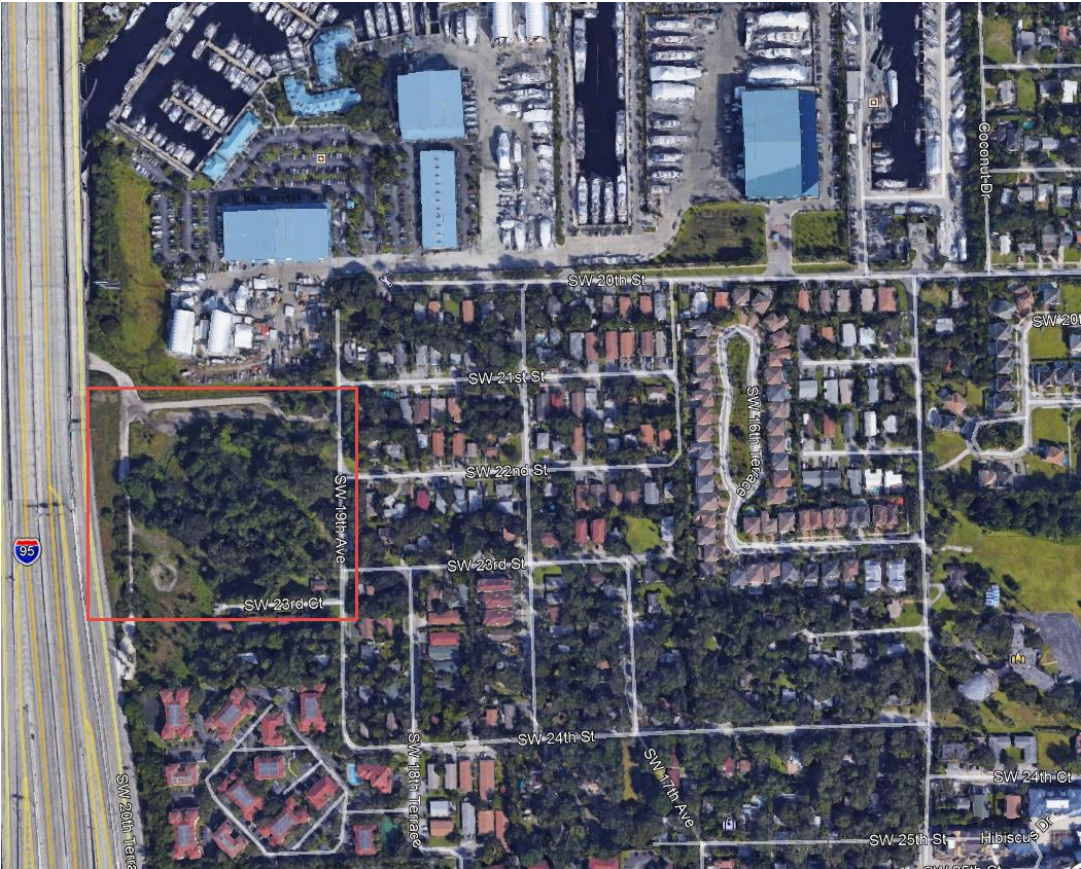
Parcel\_Number 504204240110  
Address 0515 NW 15 Ave  
City Fort Lauderdale  
Zip 33311  
CITY1 CITY OF FORT LAUDERDALE  
PARCELNO 504204240110



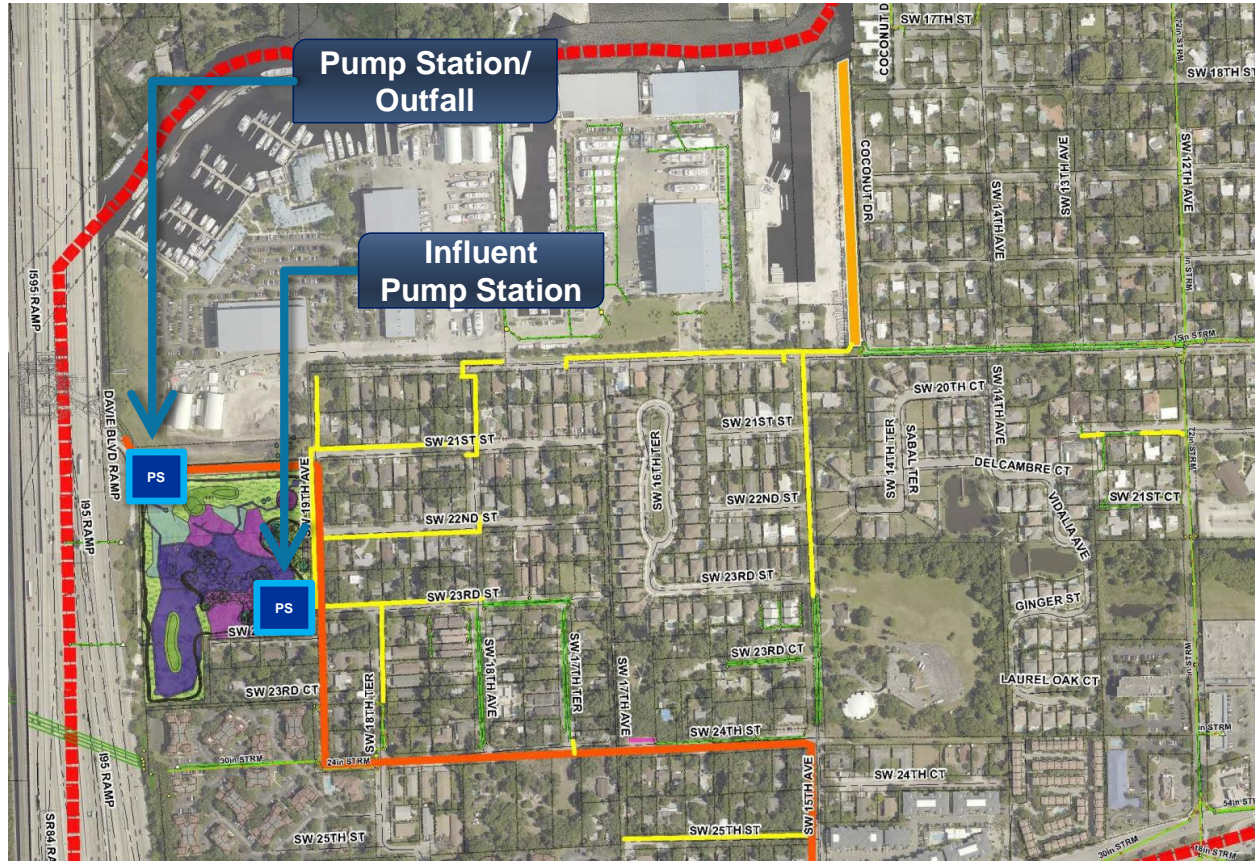
# PROGRESSO PROPOSED PUMP STATION LOCATION



# RIVER OAKS PROPOSED PUMP STATION LOCATIONS

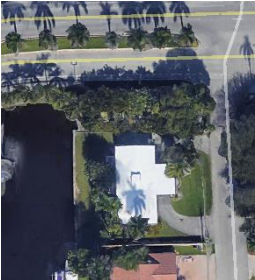


# River Oaks Proposed Pump Stations



# SOUTHEAST ISLES PROPOSED PUMP STATION LOCATIONS

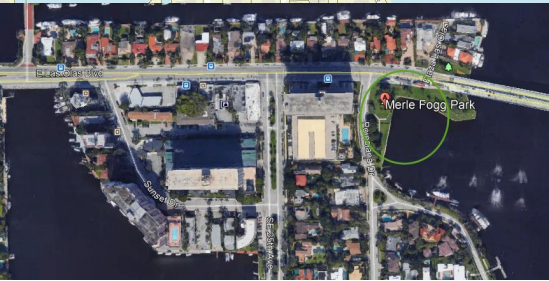
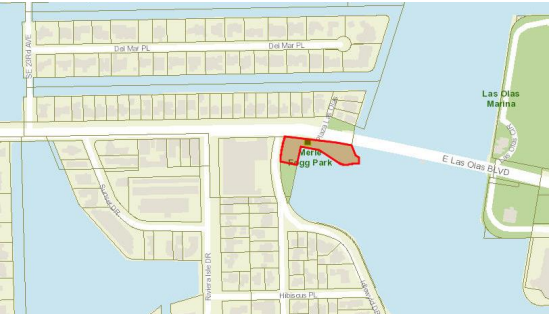
## City Owned Properties



301 Lido Dr.

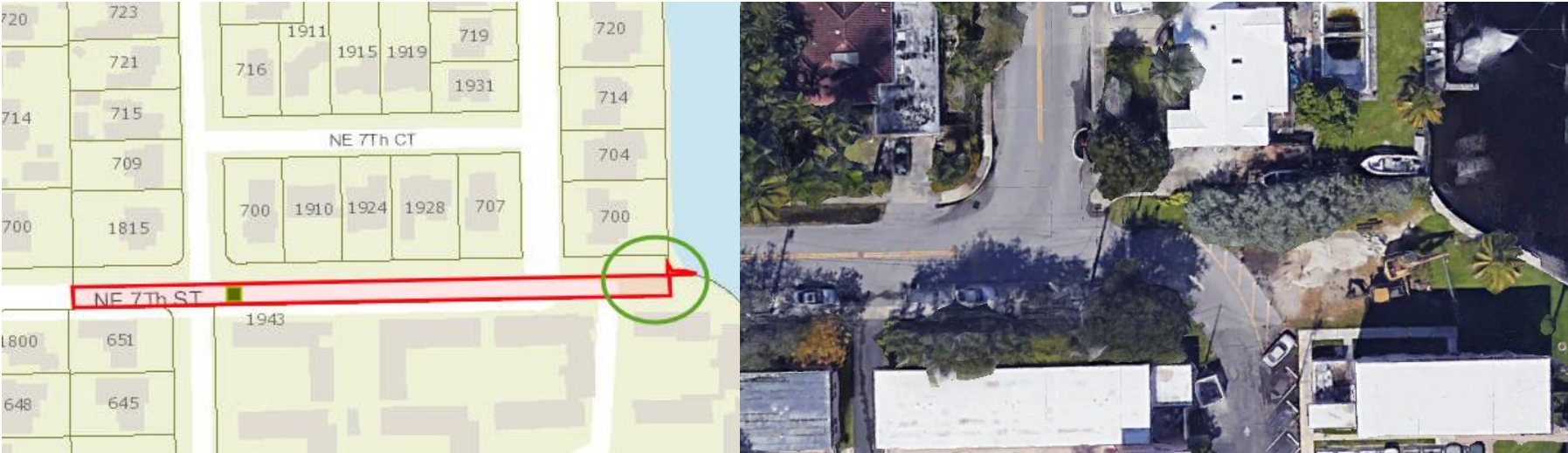


## Merle Fogg Park





# VICTORIA PARK PROPOSED PUMP STATION LOCATIONS



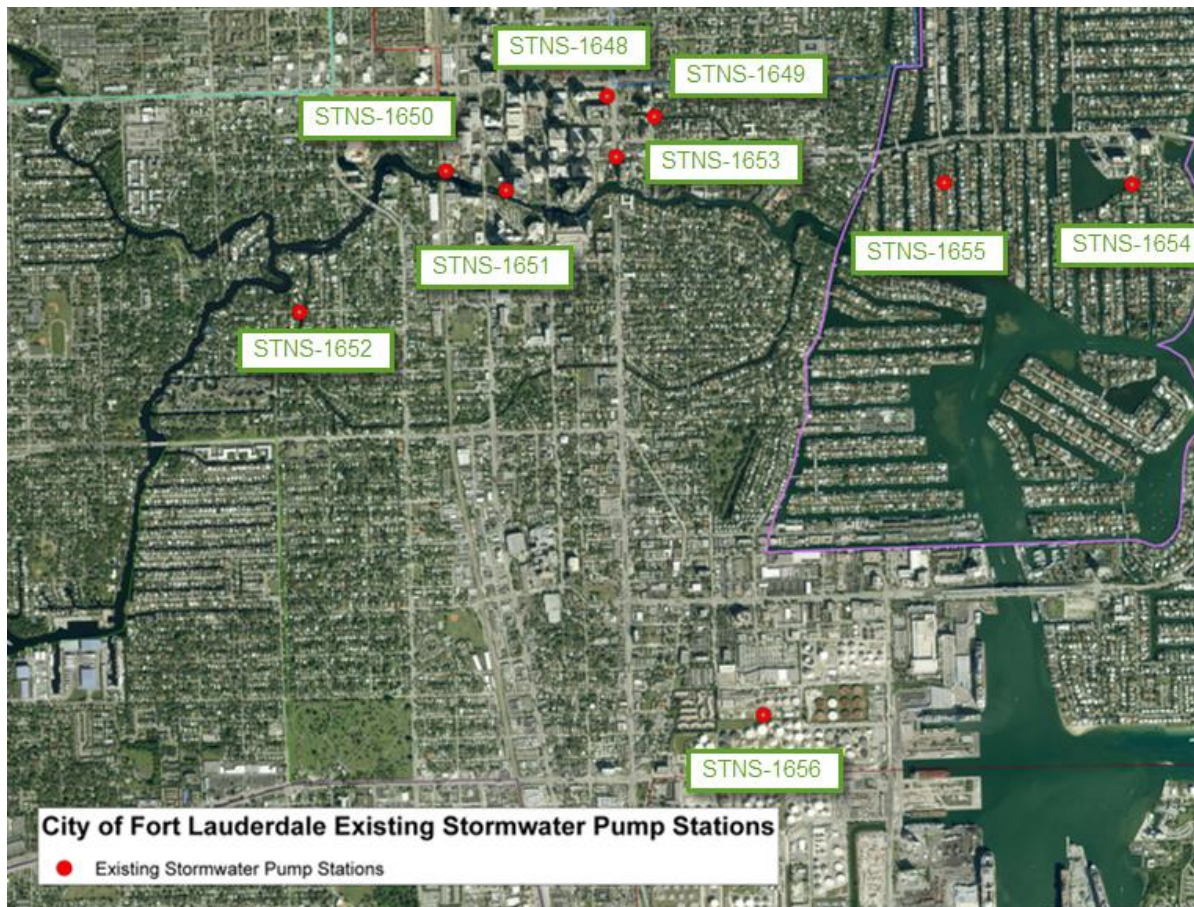
# City's Existing Stormwater Pump Stations



# EXISTING STORMWATER PUMP STATIONS

11 [ >> ]

FID	FACILITYID	STRUCTTYPE	INSTALLDAT	NAME	LocationZ	Slide	Datum	SSTTRR_QQ	Orig_Obj ec	HS_Z_Coord
0	STNS-1648	Pump Station	1987-04-05	UN	5.274866581	N	88	105042-B and 115042-A	3303	5.274866581
1	STNS-1649	Pump Station	1987-04-05	UN	0	N	88	115042-A	3304	0
2	STNS-1650	Pump Station	1987-04-05	SS-1	0	N	88	105042-B	3305	0
3	STNS-1651	Pump Station	1987-04-05	SS-2	2.366524935	N	88	105042-B	3306	2.366524935
4	STNS-1652	Pump Station	1987-04-05	UN	5.810725689	N	88	105042-B	3307	5.810725689
5	STNS-1653	Pump Station	1987-04-05	UN	4.492698193	N	88	115042-A and 105042-B	3308	4.492698193
6	STNS-1654	Pump Station	1987-04-05	SS-4	1.813004851		88	125042-B	3309	1.813004851
7	STNS-1655	Pump Station	1987-04-05	SS-5	1.568884254		88	115042-B	3310	1.568884254
8	STNS-1656	Pump Station	1987-04-05	STORM STATION	4.622237206	Y	88	145042-D	3311	4.622237206



# Existing Stormwater Pump Stations

9 Pump Stations