

East Las Olas Boulevard over the Intracoastal Waterway Bridge Rehabilitation Project Financial Project ID: 449257-1-52-01



Introductions

Meet the Team



Thuc H. Le, P.E.
FDOT Project Manager
FDOT District Four



Josh Baimel, P.E.
Project Manager
Engineer-of-Record
JMT, Inc.



**John Danielsen,
P.E.**
Senior Structural
Engineer
Engineer-of-Record
HDR, Inc.



**Johan Aranda,
P.E.**
Deputy Project
Manager
JMT, Inc.

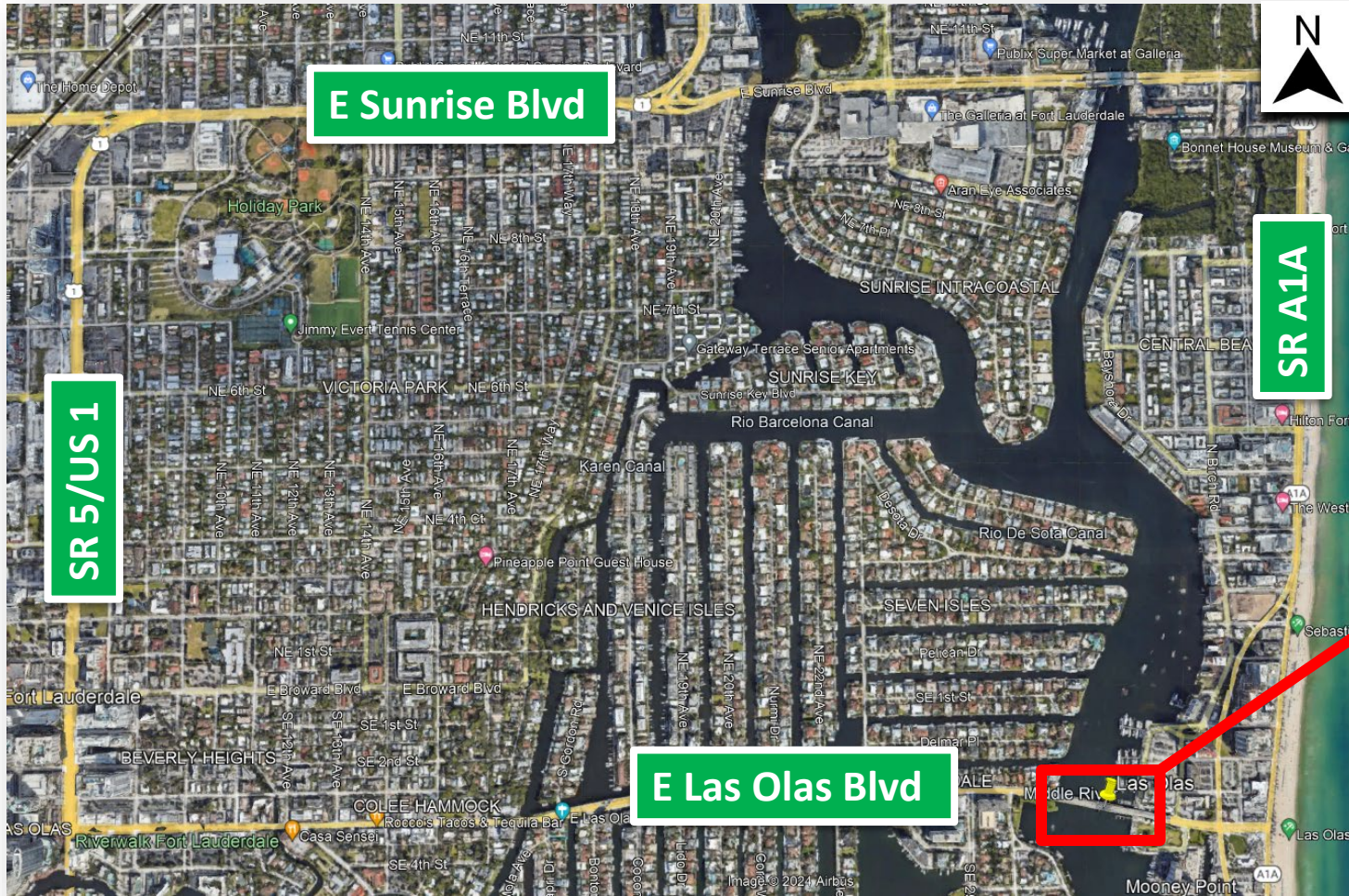


Agenda

- 1. Project Location and Overview**
- 2. Public Outreach and Communication**
- 3. Proposed Improvements**
- 4. Construction Impacts**
- 5. Project Benefits, Schedule, and Cost**
- 6. Contact Information and Q&A**

1. Project Location and Overview

Project Location



History of Las Olas Blvd Bridge Projects

Past Improvements:

- 2014 – Bridge painting, deck overlay, and barrier installed in front of sidewalks
- 1998 – **Bridge rehabilitation** (joints, handrail, roadway lighting, ladders and platforms, concrete wheel paths, generator, fender repair, control system, recon machinery, bulkhead, concrete repair, repair and replace structural steel, repaint structural steel)
- 1979 – **Bridge rehabilitation** (machinery and castings, ladders and platforms, repaint structural steel, replace electrical equipment)
- 1977 – Bridge repainted
- 1976 – Fender system replaced

Project Overview


Proposed Improvements:

- Replace old deck with new solid surface aluminum deck.
- Paint the movable bridge deck and fascia elements.
- Replace important electrical components and wiring.
- Replace the mechanical span locks which connect the two halves of the movable bridge deck when the bridge is in the “down” position.
- Replace the existing navigation/marine fenders in the waterway, including replacement of the timber piles and support beams.
- Renovate the bridge tender house.
- Minor repaving of the roadway at ends of the bridge and restore traffic monitoring site.


Project Length: 0.207 miles

2. Public Outreach and Communication

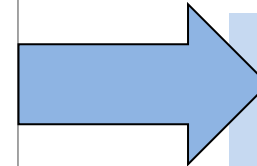
Summary of Public Outreach



Emails to City and stakeholders



Meetings with City and public



**Public Workshop (In-person and Virtual):
Held 11/14 @ 6PM at ArtServe Fort
Lauderdale**

**An additional informative public
meeting will be held prior to
construction**

**During construction: Weekly
stakeholder updates and monthly
status meetings with City**



Florida
Administrative
Register



Flyers to property
owners/tenants and
HOAs

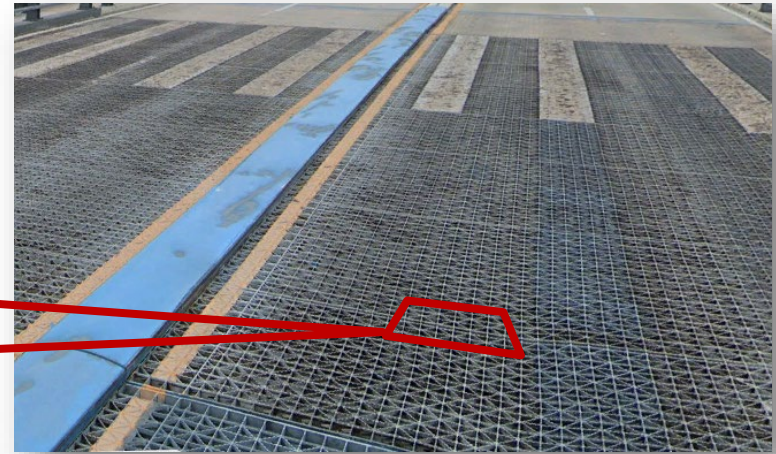
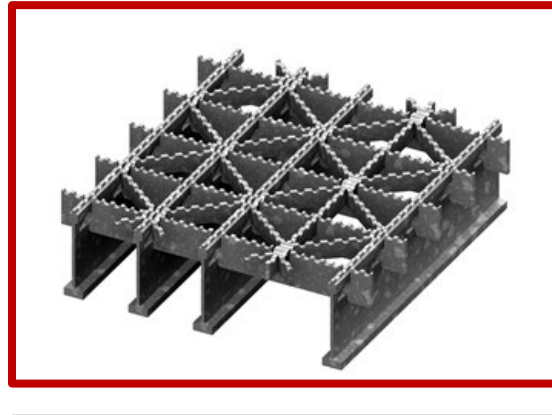


Social media and website
(www.tinyurl.com/elasolas)

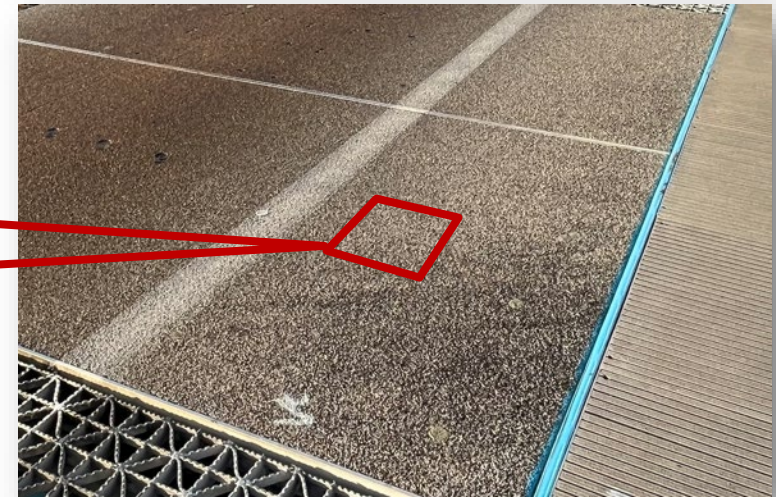
3. Proposed Improvements

Proposed Improvements

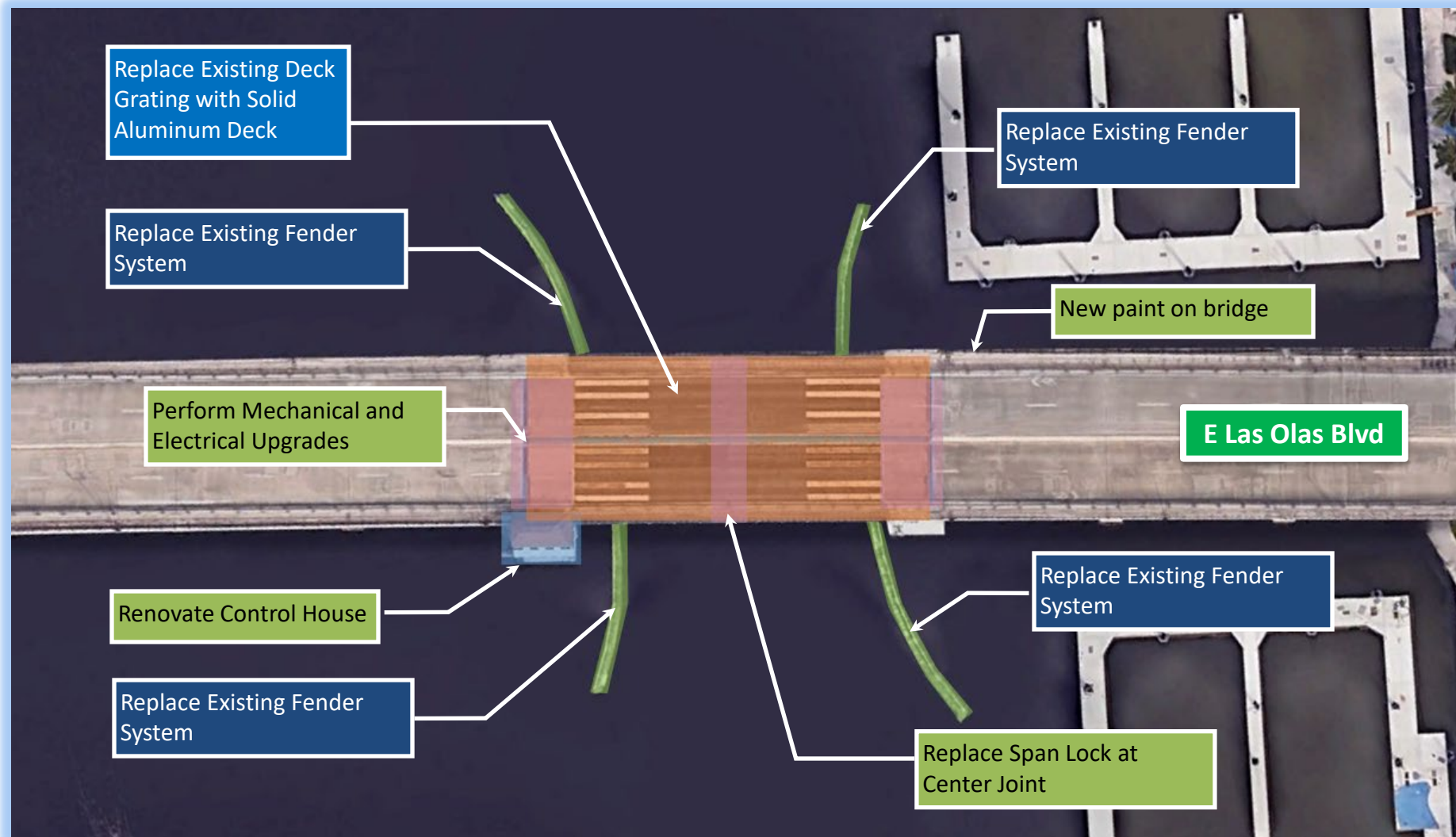
What does the bridge deck look like now?



What will it look like after construction?
(*sample location shown*)

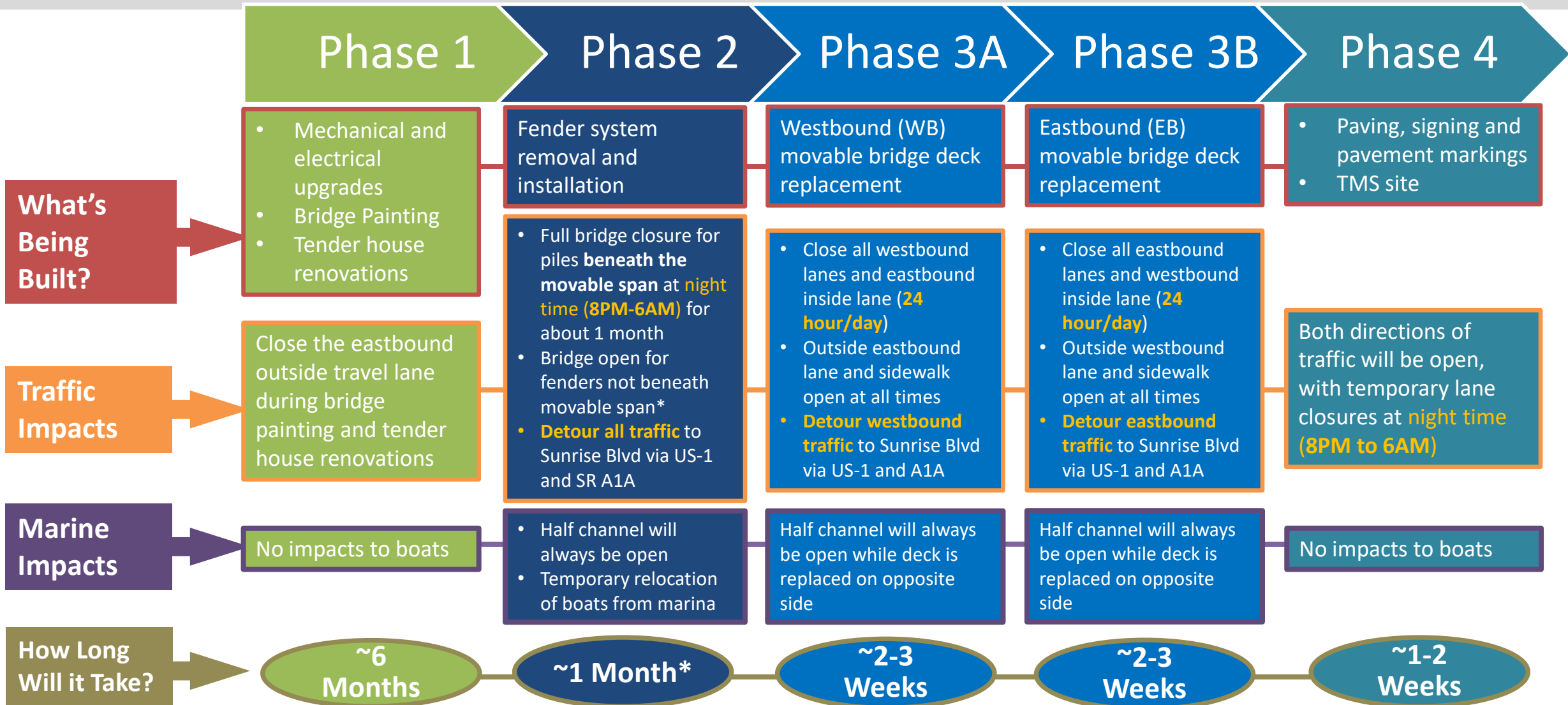


Summary of Proposed Improvements



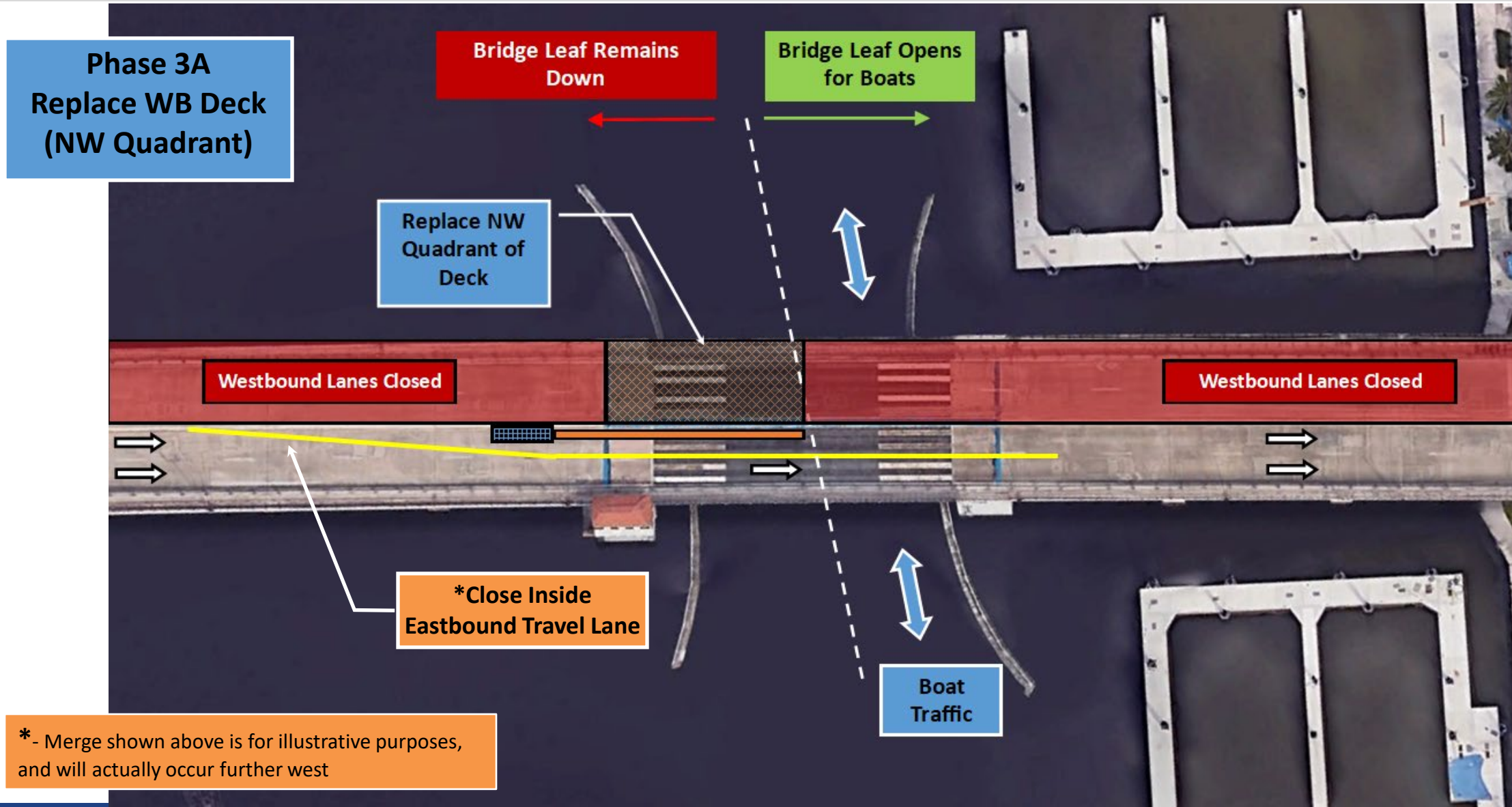
4. Construction Impacts

Duration and Phasing of Construction

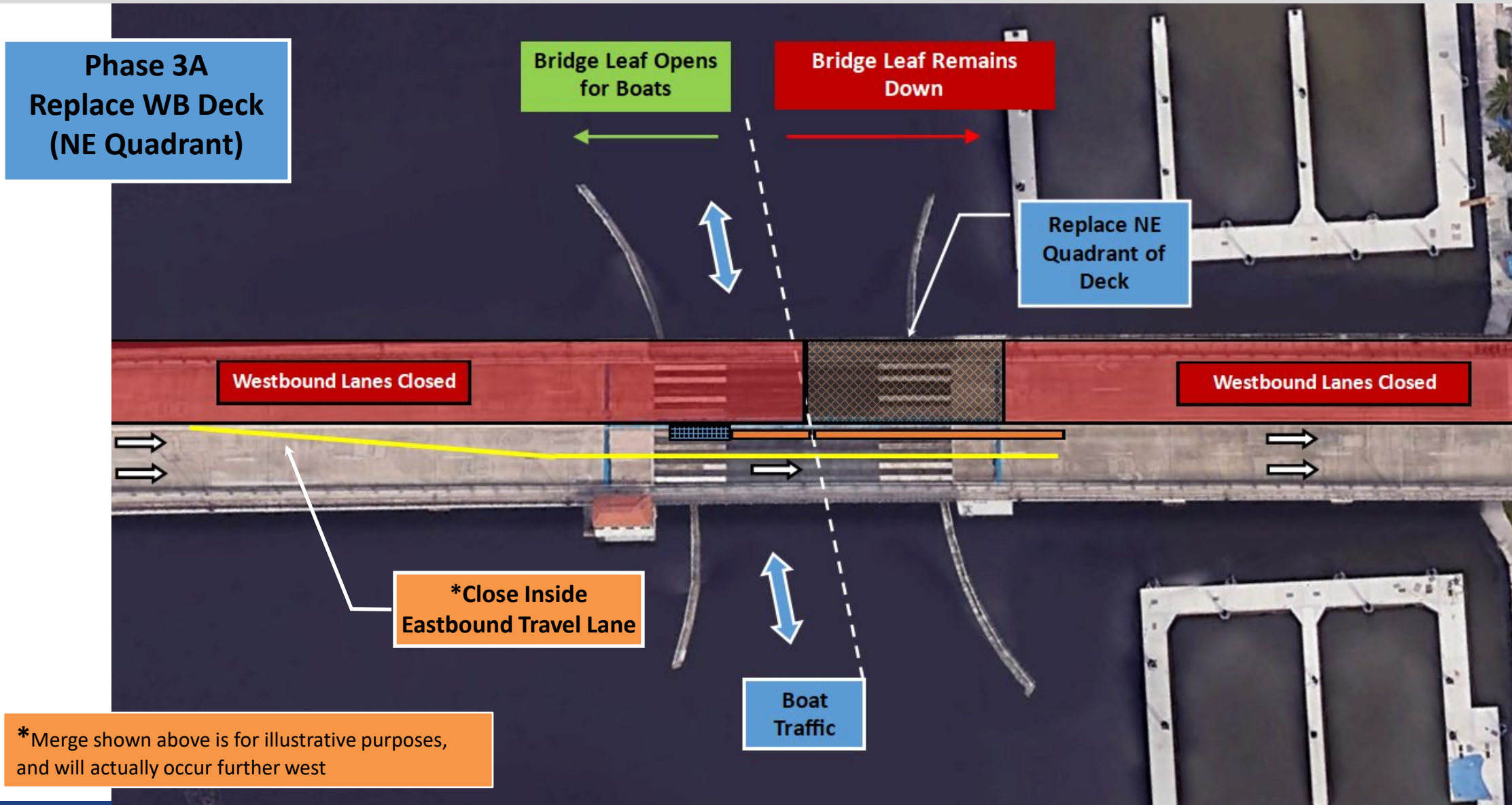


* - ~1 month for piles beneath bridge (detour at night); additional ~ 1-2 months for remaining piles (bridge open to traffic)

Temp. Traffic Control During Deck Replacement

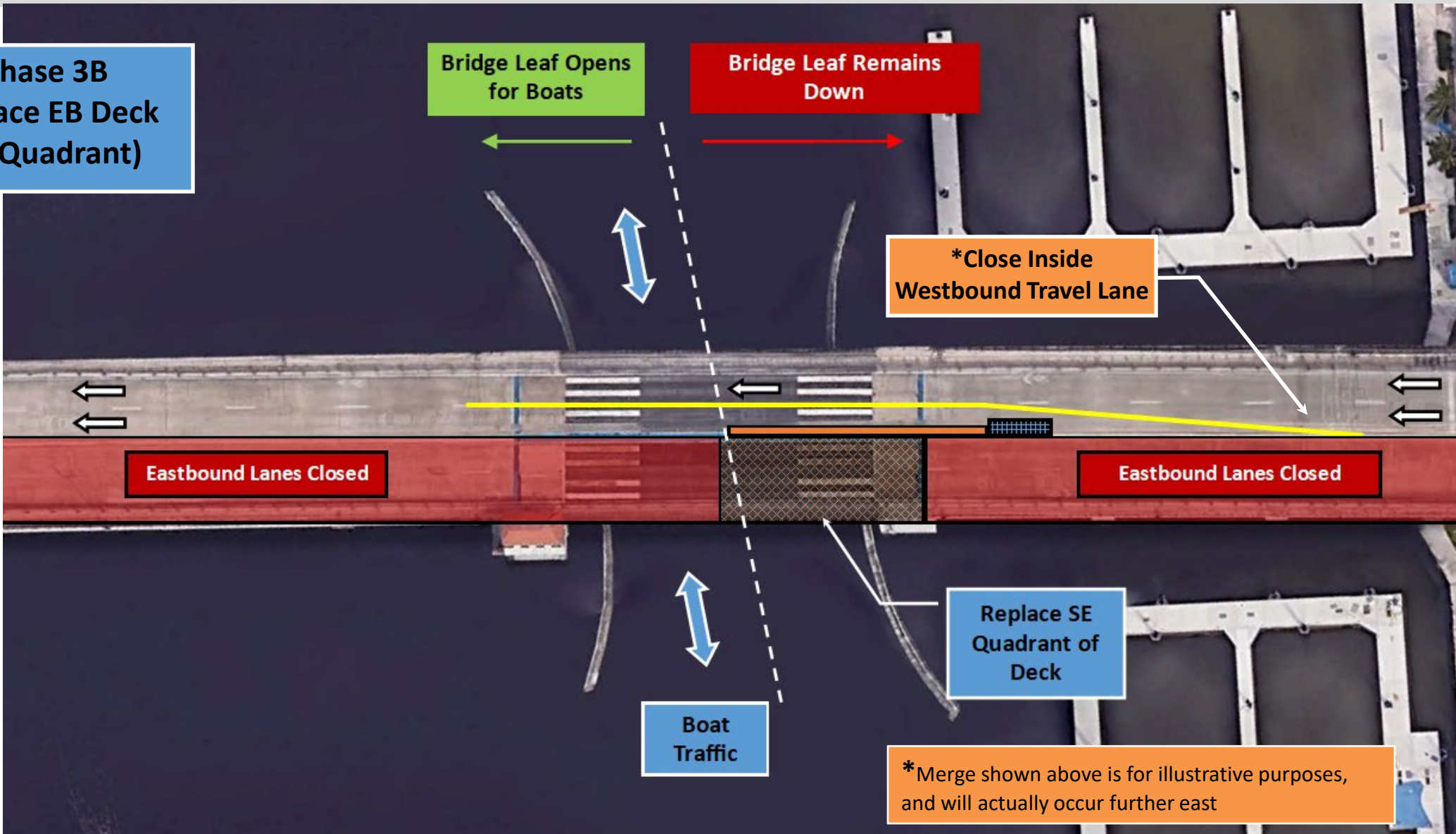


Temp. Traffic Control During Deck Replacement



Temp. Traffic Control During Deck Replacement

Phase 3B
Replace EB Deck
(SE Quadrant)



*Merge shown above is for illustrative purposes, and will actually occur further east

Temp. Traffic Control During Deck Replacement

Phase 3B
Replace EB Deck
(SW Quadrant)

Bridge Leaf Remains
Down

Bridge Leaf Opens
for Boats

*Close Inside
Westbound Travel Lane

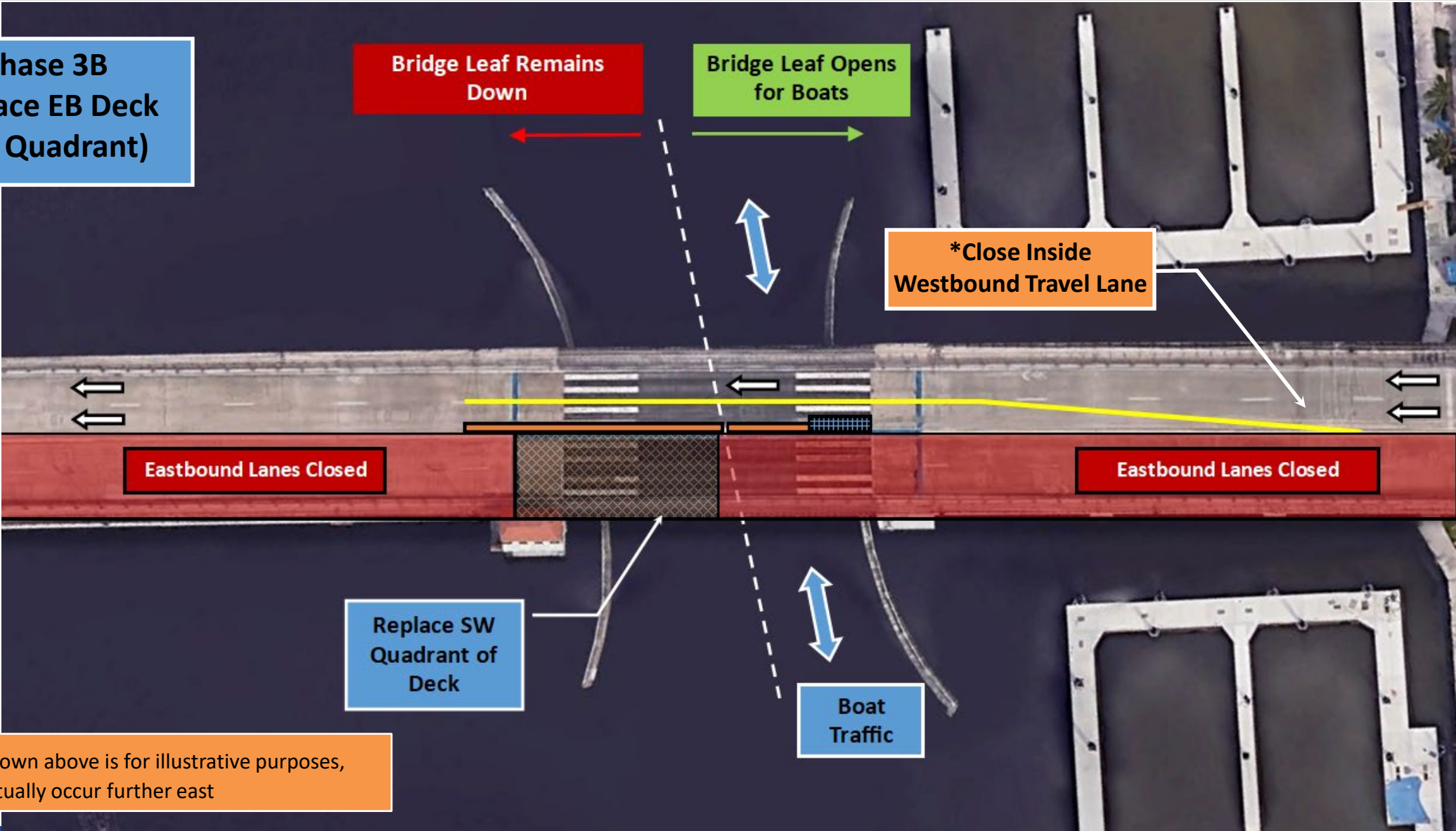
Eastbound Lanes Closed

Eastbound Lanes Closed

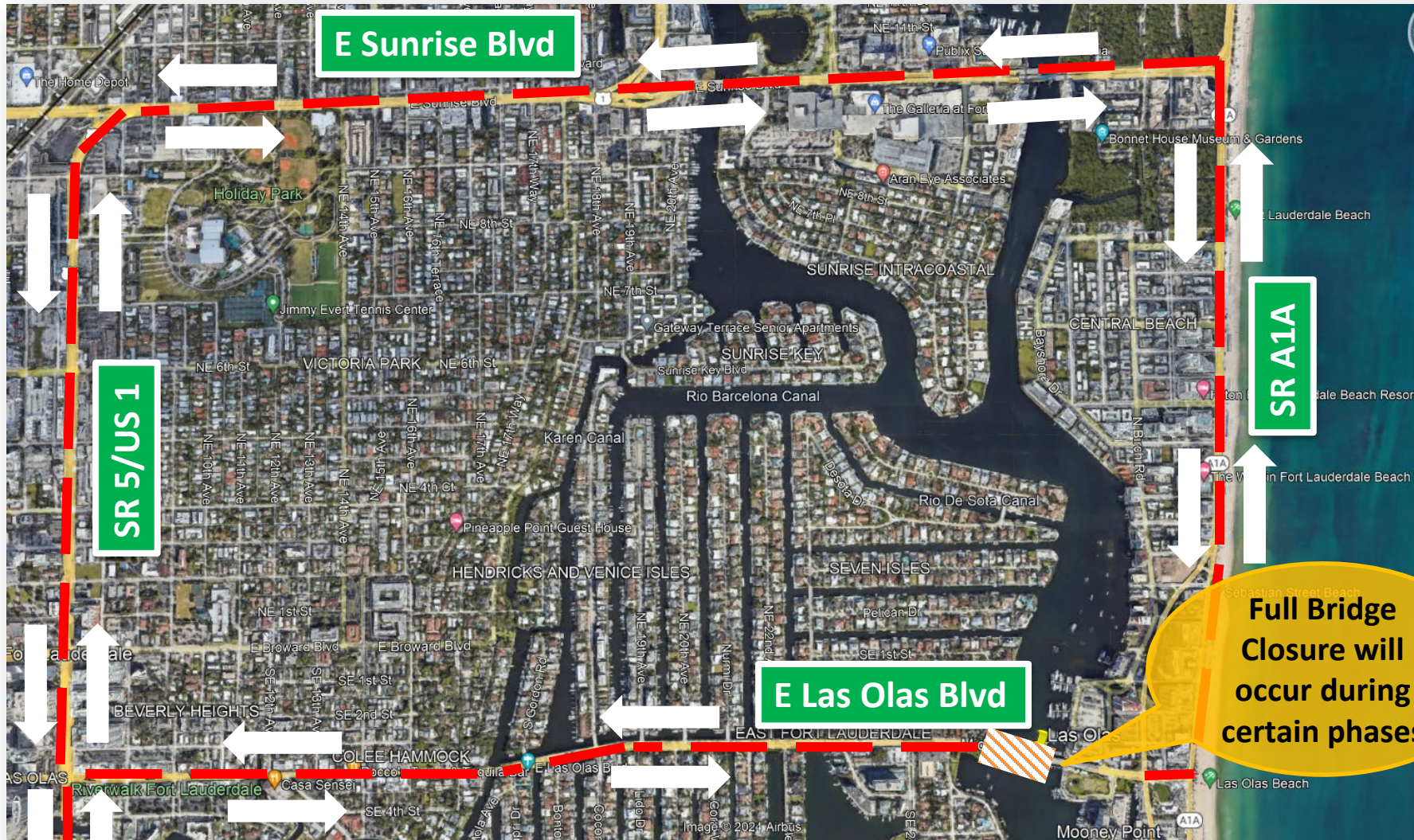
Replace SW
Quadrant of
Deck

Boat
Traffic

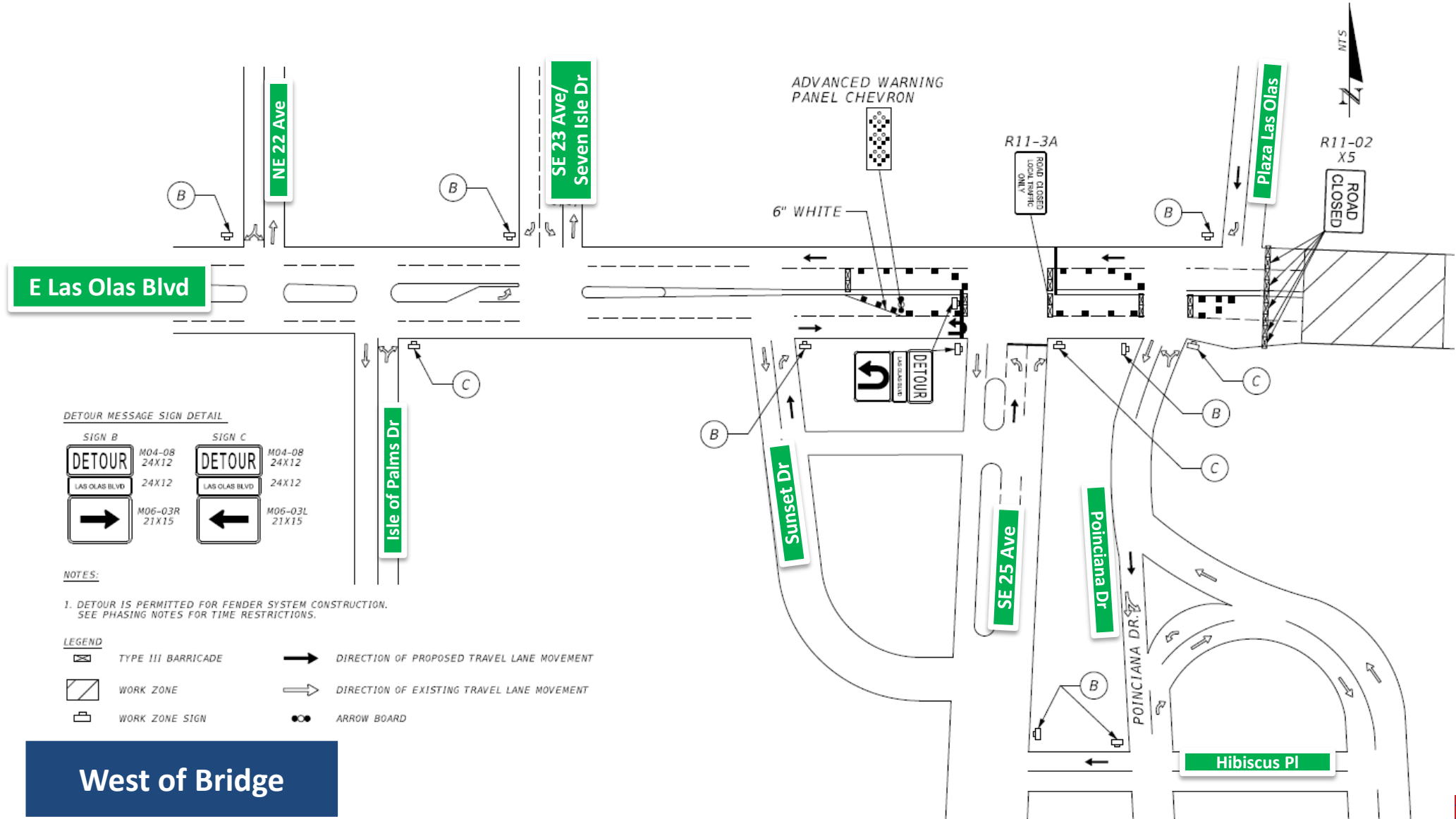
*Merge shown above is for illustrative purposes,
and will actually occur further east



Temporary Traffic Control Plan (Detour)



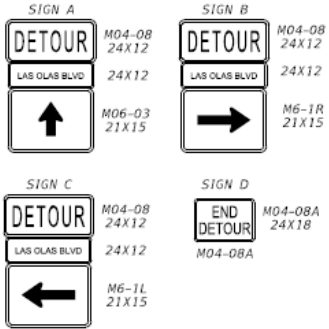
Temporary Traffic Control Plan (Local Traffic)



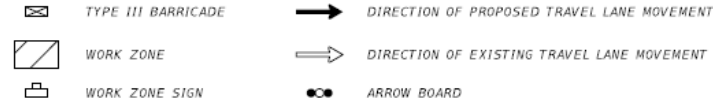
West of Bridge

Temporary Traffic Control Plan (Local Traffic)

DETOUR MESSAGE SIGN DETAIL

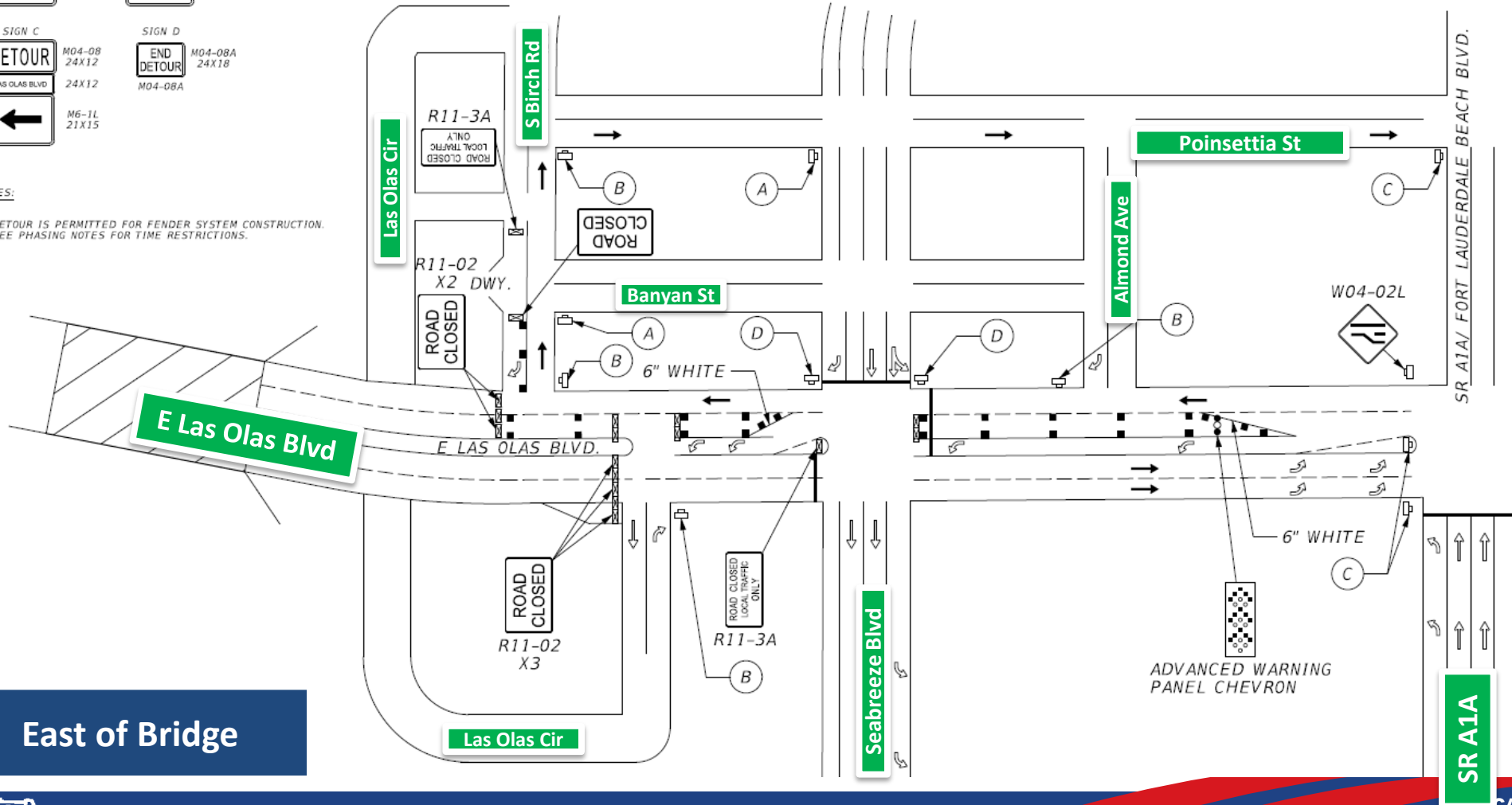


LEGEND



NOTES:

- DETOUR IS PERMITTED FOR FENDER SYSTEM CONSTRUCTION. SEE PHASING NOTES FOR TIME RESTRICTIONS.



Additional Temporary Traffic Control Plan Concerns

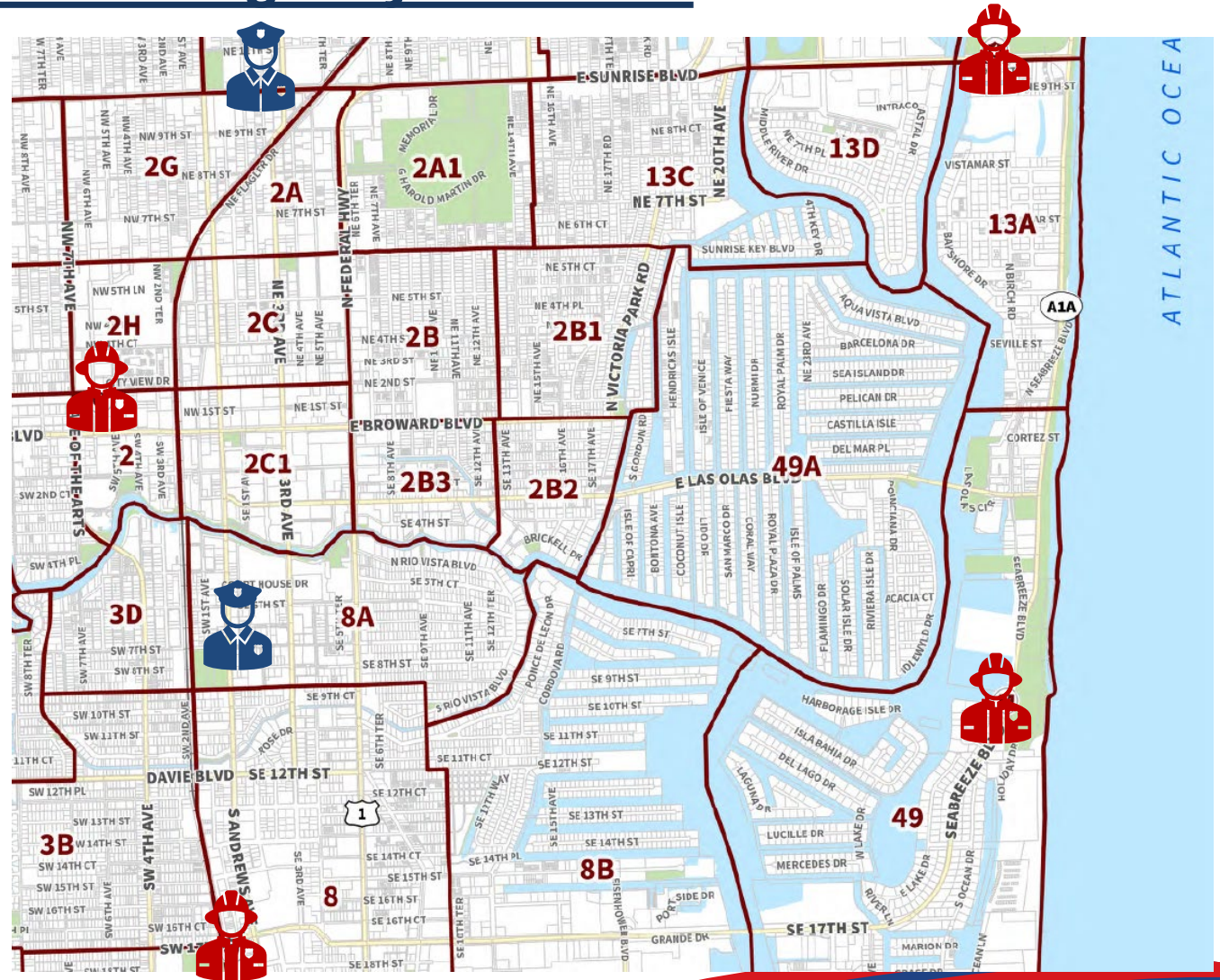
Minimizing Delays/Impacts to Everyday Travel:

- No bridge closures during “**major**” events (ex. Boat Show, Air Show, Spring Break) coordinated with the City of Fort Lauderdale
- Using partial detours instead of full bridge closure during deck replacement
 - Maintains pedestrian access by keeping one sidewalk open
 - Helps reduce travel times/burden by keeping one direction of traffic open
- **SMART** Work Zone collaboration (ex. adjustment of signal timing as needed along detour routes; providing/updating **advanced traveler information**)
- Coordinating with concurrent bridge project on Sunrise Blvd to ensure all lanes on Sunrise Blvd bridge are open during Las Olas Blvd bridge closure/detour
- Modification to the draw bridge operation schedule (opening times and durations) will be coordinated with the **United States Coast Guard** to mitigate traffic delays

Additional Temporary Traffic Control Plan Concerns

Addressing Response Times for Emergency Vehicles:

Advanced notification/
coordination with fire and
police prior to detours and
closures



5. Project Benefits, Schedule, and Cost

Key Benefits of this Project

Electrical, Mechanical, Painting, and Tender House:

- Add “**redundancy**” to operating machinery (ex. dual motors)
- New span lock (at center opening joint) will **eliminate banging sounds** between the spans
- New windows, doors, bathroom, and **painted exterior at tender house**
- New paint provides an **aesthetically appealing protective barrier**

New Solid Aluminum Deck:

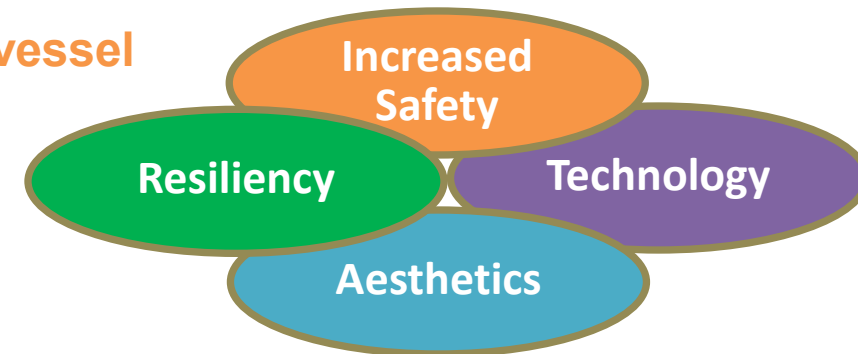
- Employ **Accelerated Bridge Construction (ABC)** – prefabricating deck, installing while assembled
- Solid deck provides **reduced road noise**, **better rideability for bicyclists**, and is more **resilient (non-corrosive)** and **aesthetic**

New Fender System:

- **Resilient** fiber-reinforced polymer, **better at absorbing energy from vessel impacts**
- Durable, easy to maintain, and environmentally friendly
- **Reduced noise during pile installation**

Paving, Striping, Signing and Traffic Monitoring Site (TMS):

- **Safety** and **aesthetic** enhancements (ex. new asphalt, two-tone lane stripes)
- New **vehicle detection loops** and pull boxes at TMS



Project Schedule and Cost

- **Estimated Construction Start: Spring 2026**
- **Estimated Construction End: Spring 2027**
- **Estimated Construction Cost: \$12 million**



How Long Will These Improvements Last?

- Machinery – 25 years
- Paint – 10 years
- New Solid Deck and Fender System – Lifetime of bridge

6. Contact Information and Q&A

Contact Information

If you have additional questions, please contact
FDOT Project Manager Thuc H. Le, P.E. at:

Thuc.Le@dot.state.fl.us



3400 West Commercial Boulevard
Fort Lauderdale, Florida 33309



(954) 777-4552 or
Toll Free: (866) 336-8435; Ext. 4552



