

## TASK ORDER No. 4

Dated this        day of        , 2022

### FORT LAUDERDALE PUBLIC WORKS DEPARTMENT

### INDUSTRIAL PRETREATMENT PROGRAM: LOCAL LIMITS RE-EVALUATION

#### PROFESSIONAL SERVICES

This Task Order between the City of Fort Lauderdale, a Florida municipal corporation (“CITY”) and CDM Smith Inc., a Massachusetts corporation authorized to transact business in Florida, (“CONSULTANT”) is pursuant to the City Commission of the City of Fort Lauderdale, Florida, who, at its meeting of May 18, 2021, authorized by motion, the execution of the Agreement between CONSULTANT and CITY authorizing the performance of CCNA - Professional Services Library, Continuing Services Contract, RFQ No. 12464-416 (“Agreement”).

#### PROJECT BACKGROUND

The CITY owns and operates the GT Lohmeyer Wastewater Treatment Plant (GTL WWTP). This facility operates under Domestic Wastewater Facility Permit #FLA041378 reissued on December 2, 2021.

As part of the Industrial Pretreatment Program Requirements, listed in the permit and included under part VII.A.3.d, the CITY is required to:

“provide a written technical evaluation that local limits have been developed in accordance with Rule 62-625.400(3)(a), Florida Administrative Code. The evaluation shall verify whether existing local limits protect the wastewater facilities, and if not, the Permittee shall develop new local limits as part of the evaluation in accordance with Rule 62-625.600(16), F.A.C. For new local limits, a plan of study shall be submitted to the Department prior to initiating sampling required to develop the new local limits. This evaluation shall be submitted to the Department at the address in the condition below within 180 days after permit renewal.”

The CITY has requested the CONSULTANT to provide services for a re-evaluation of local limits for the CITY’s Industrial Pretreatment Program.

#### GENERAL REQUIREMENTS

##### **Quality Control**

The CONSULTANT is responsible for the Quality Control (“QC”) of its work and of its sub-consultants. The CITY shall only accept submittals for review and action from the CONSULTANT.

The CONSULTANT shall be responsible for the professional quality, technical accuracy, and coordination of services furnished by the CONSULTANT. It is the CONSULTANT’s responsibility to independently and continually QC its electronic files, progress payment applications, schedules, and project deliverables required by this Task Order. The submittal shall consist of the names of the CONSULTANT’s staff that performed the QC review.

## **Project Schedule**

The CONSULTANT shall prepare a preliminary project schedule as an exhibit of this Task Order. The schedule shall be prepared in Microsoft Project and shall utilize an estimated Notice-to-Proceed (NTP), based on best available information.

The CONSULTANT shall prepare a final project schedule to the CITY, for approval, within ten (10) business days after receiving the NTP and prior to beginning work. No work shall commence without an approved schedule. The final schedule shall consist of activities, submittal review timeframes, and other project activities to complete the work. The CONSULTANT shall prepare updated project schedules for the specific scope of services.

## **SPECIFIC SCOPE OF SERVICES**

The Scope of Services to be provided by CONSULTANT shall be as follows:

### **Task 1.0 – Preparation of Plan of Study**

The CONSULTANT services shall include the subtasks listed below.

#### **Subtask 1.1 Historical Data Evaluation**

Historical data will be reviewed to develop a final list of the Pollutants of Concern. Historical data, as listed below, will be used to determine which pollutants should be considered Pollutants of Concern for the local limits Sampling Program.

Historical data will be used to identify the list of Pollutants of Concern. The review will include:

- a) Influent, effluent, and residual data during the past 5 years from the George T. Lohmeyer Wastewater Treatment Plant.
- b) Industrial waste surveys completed within the last 10 years.
- c) Industrial user permit applications.
- d) Existing Enforcement Response Plan.
- e) Industrial user self-monitoring data and reporting to the CITY.
- f) Past and present operation and maintenance data that shows any reduction in plant performance such removal efficiencies, pass through incidences, degradation of collection system, sewer overflows, sewer blocks, excessive corrosion, unusual odors.
- g) Discharge Monitoring Reports (DMRs) or violations of National Pollutant Discharge Elimination System permit conditions.
- h) Priority Pollutant scans and WET Testing.
- i) Florida Department of Environmental Protection issued domestic wastewater permit (#FLA041378).
- j) Federal Industrial Pretreatment limits as referenced by Florida Administrative Code.
- k) Applicable residual standards.

## **Subtask 1.2 Communication with Florida Department of Environmental Protection (“FDEP”)**

The CONSULTANT will prepare and submit a letter to the FDEP to communicate the planned milestones including submission of a Sampling Plan (Subtask 1.3) and Local Limits Re-evaluation Report (Subtask 4.2). This is a pro-active step being taken by the CITY to maintain open communication with FDEP anticipating that the Local Limits Re-evaluation Report may be submitted more than 180 days after the #FLA041378 permit renewal. The letter will solicit a response from FDEP acknowledging the schedule.

## **Subtask 1.3 Sampling Plan Development**

The Plan of Study will outline the local limits Sampling Plan. The CONSULTANT will develop a Sampling Plan to establish the Pollutants of Concern to be sampled, the number of monitoring locations, the sampling protocol, analytical methods, the analytical detection limits and the number of sampling events. The Sampling Plan will be submitted to Florida Department of Environmental Protection (FDEP) for review, comment and approval prior to proceeding with the Sampling and Analysis Program. The CONSULTANT will identify a National Environmental Laboratory Accreditation Conference certified laboratory that will perform the analysis and a sample chain-of-custody form indicating the data to be recorded for each sample.

## **Task 2.0 - Sampling and Analysis Program Implementation**

The CONSULTANT, using PACE Analytical Services, LLC, will conduct the required Sampling and Analysis Program based on the Florida Department of Environmental approved Sampling Plan. A total of five (5) monitoring locations are anticipated and include the influent, effluent and residuals of the George T. Lohmeyer Wastewater Treatment Plant and two (2) background locations within the collection system, representative of the non-industrial contributions to the wastewater plant.

Time-proportional samplers will be used to collect samples at monitoring locations. Samplers will be used to collect one (1) 24-hour composite sample each day for seven (7) consecutive days from the GTL WWTP influent, effluent, and two (2) background locations identified in the Sampling Plan. For parameters which require grab samples, at least four (4) grab samples, per location, must be taken within a 24-hour period. The GTL WWTP residuals will be sampled for two (2) consecutive days.

Each wastewater sample will be analyzed per FDEP approved analytical methods and method detection limits for Pollutants of Concern identified in Subtask 1.1 and approved by FDEP in Subtask 1.2.

## **Task 3.0 - Project Meetings**

The CONSULTANT will attend up to four (4) meetings to gather additional information, review the draft deliverable and/or meet with regulatory agencies (i.e., FDEP). The CONSULTANT will

organize these meetings including preparing agendas, compiling meeting summaries and distributing the summaries to attendees.

#### **Task 4.0 - Pretreatment Local Limit Re-Evaluation Analysis and Report**

An analysis and report will be developed providing a set of technically-based local limits which the CITY can adopt as part of the Sewer Use Ordinance. These limits will be selected to protect the effluent and sludge quality, prevent inhibition of the plant processes and reduce hazards to plant personnel.

##### **Subtask 4.1 LLIDS Analysis**

The Local Limit analysis will use the Local Limits Information and Development System (LLIDS) computer analysis developed by FDEP to assist Industrial Pretreatment Programs in evaluating Local Limits. FDEP's most recent revision is LLID2020 and incorporates EPA's 2012 Guidelines for Water Reuse. Data collected during the Sampling Program and historical data will be used to complete the LLID2020 analysis.

##### **Subtask 4.2 Local Limit Re-Evaluation Report**

The report will consist of the following outline. A draft copy of the report will be submitted to the CITY for review and comment. A final report will be prepared after incorporating the CITY's comments for the CITY to submit to FDEP.

1. Project Background
  - i. Introduction
  - ii. Purpose and Scope
  - iii. Treatment Process Description
2. Historical Data Evaluation
  - i. Evaluation Criteria
  - ii. Plan Operations, Biosolids, and Effluent Quality
  - iii. Industrial Users Analysis
3. Existing Conditions
  - i. Existing Plant Discharge Limits
  - ii. Existing Local Discharge Limits
  - iii. Existing Industrial Wastewater Discharges
  - iv. Identifying Pollutants of Concern
  - v. Pollutants of Concern Determination
4. Local Limit Sampling Program
  - i. Sampling Locations
  - ii. Sampling Protocol
  - iii. Analytical Methods and Detection Limits
  - iv. Results
5. Derivation of Technically Based Local Limits
  - i. Criteria for Setting Local Limits
  - ii. Final Pollutants of Concern
  - iii. LLIDS Model Input
  - iv. LLIDS Results and Evaluation

v. Proposed Local Limits

**Task 5.0 - Additional Information to FDEP**

The CONSULTANT will provide up to eighty (80) hours of technical support to provide additional information to FDEP, provide clarifications of previously submitted information or answer questions related to Subtask 4.2 deliverable.

**Task 6.0 - Allowance for New Limit Coordination with Industries**

The CONSULTANT may perform additional services to assist the CITY with new local limit coordination with industrial users, as results of the local limit re-evaluation effort. Services under this Allowance will include:

- a) Review impact of proposed local limit changes on existing industrial users.
- b) Assist the CITY with correspondence and/or meetings to communicate local limit changes to industrial users.
- c) Assist the CITY with ordinance updates to incorporate new local limits.
- d) Other services, as deemed necessary by CITY.

The CONSULTANT will obtain written approval from CITY Project Manager prior to proceeding with this Task.

**Task 7.0 - Sampling and Analysis of Wastewater from Contributing Municipalities**

The CONSULTANT, using PACE Analytical Services, LLC, will conduct sampling and analysis of wastewater from contributing municipalities. The purpose of this sampling and analysis is to capture a representative sample from the contributing municipality to investigate if the contributing municipality provides adequate industrial pretreatment and discharges only non-industrial wastewater to the CITY. The results of this sampling and analysis are for internal use by the CITY and will not be incorporated into Task 4. The CONSULTANT will summarize monitoring locations and parameters in a memo with a comparative to the Pollutants of Concern identified in Subtask 1.3. The memo will be submitted to the CITY along with results from laboratory Subconsultant (PACE Analytical Services, LLC).

Sampling will consist of one (1) monitoring location representative of the Contributing Municipalities (Wilton Manors, Port Everglades, and Oakland Park) for a total of three (3) monitoring locations. Parameters for sampling and analysis will be based on Pollutants of Concern identified in Subtask 1.3. Time-proportional samplers will be used to collect one 24-hour composite sample, and one grab sample at each monitoring location, for three (3) consecutive days.

**PROJECT ASSUMPTIONS**

1. CONSULTANT to conduct required sampling and laboratory analysis for Pollutants of Concern.
2. CITY to submit final Written Technical Evaluation to Florida Department of Environmental Protection.

3. Local Limits update is based on the current list of permitted industries and an industrial survey is not anticipated for this work.
4. Establishing surcharge limits is not included as part of these services.
5. CITY to provide access to site.
6. CITY to provide existing and available GIS files.
7. CITY to provide historical data, as listed in Subtask 1.1.
8. CONSULTANT contemplates virtual attendance at meetings with out-of-town and local staff to expedite activity turnarounds. The CONSULTANT PM will be available for face-to-face meetings with virtual staff as requested by the CITY.
9. CONSULTANT printing and postage is not contemplated.
10. CONSULTANT shall submit all project files in original format (DWG, WORD, Excel, or other files) to the CITY at CITY's request.

### **ADDITIONAL SERVICES**

If authorized in writing by the CITY, as an amendment to this Task Order, the CONSULTANT shall furnish, or obtain, Additional Services of the types listed in the MASTER AGREEMENT. The CITY, as indicated in the MASTER AGREEMENT, will pay for these services.

### **PERFORMANCE SCHEDULE**

The CONSULTANT will provide all services described in this scope of work within 394 calendar days from receiving a written NTP. A preliminary project schedule is presented in Exhibit C.

### **PROJECT FUNDING**

Performance of this project is at the CITY's discretion and may be contingent upon the CITY receiving funding and work shall not begin until the CITY provides a Notice to Proceed to CONSULTANT.

### **METHOD OF COMPENSATION**

The services performed will be accomplished using the Not-to-Exceed method of compensation. The total hourly rates payable by the CITY for each of CONSULTANT's employee categories, are shown on **Exhibit A**, attached hereto and made a part hereof. Pay application requests shall be prepared on the CITY's approved pay application request form. The CONSULTANT shall submit the pay application request to the CITY's Project Manager for review and approval. Once the CITY's Project Manager approves the CONSULTANT's pay application request, the CONSULTANT may submit it to the CITY's accounts payable department via email ([AcctsPayable@fortlauderdale.gov](mailto:AcctsPayable@fortlauderdale.gov)) with a copy to the Project Manager. Pay application requests shall be submitted monthly.

### **TERMS OF COMPENSATION**

Services will be provided for this Task Order in the Not-to-Exceed amount of \$120,421.50.

### **CITY CONTACTS**

Requests for payments should be directed to City of Fort Lauderdale Accounts Payable via e-mail to [AcctsPayable@FortLauderdale.gov](mailto:AcctsPayable@FortLauderdale.gov) after getting approval from the CITY's Project Manager. Other correspondence and submittals should be directed to the attention of Miguel Arroyo, W-WWT Manager, at the address shown below. **Please be sure that correspondence refers to the CITY project number and title as stated above.**

**Justin Murray, PE**  
GTL WWTP Manager  
Public Works  
City of Fort Lauderdale  
1765 SE 18<sup>th</sup> Street  
Fort Lauderdale, FL 33316  
(954) 828-4122  
[JMurray@fortlauderdale.gov](mailto:JMurray@fortlauderdale.gov)

**Larry Teich**  
Environmental Compliance Supervisor  
Public Works  
City of Fort Lauderdale  
949 NW 38<sup>th</sup> Street  
Fort Lauderdale, FL 33309  
(954) 828-7844  
[LTeich@fortlauderdale.gov](mailto:LTeich@fortlauderdale.gov)

### **CONSULTANT CONTACTS**

**Yanice Mercado, PE**  
CDM Smith Inc.  
621 NW 53rd Street, Suite 265  
Boca Raton, Florida 33487  
(561) 212-6004  
Front Desk: 561-571-3800  
[Mercadoyi@cdmsmith.com](mailto:Mercadoyi@cdmsmith.com)

**[THIS SPACE WAS INTENTIONALLY LEFT BLANK]**

IN WITNESS OF THE FOREGOING, the Parties have set their hands and seals the day and year first written above.

**CITY**

CITY OF FORT LAUDERDALE, a Florida municipal corporation

By: \_\_\_\_\_  
CHRISTOPHER J. LAGERBLOOM  
ICMA-CM, City Manager

Date: \_\_\_\_\_

ATTEST:

By: \_\_\_\_\_  
DAVID R. SOLOMAN  
City Clerk

Approved as to Legal Form:  
Alain E. Boileau, City Attorney

By: \_\_\_\_\_  
RHONDA MONTOYA HASAN  
Assistant City Attorney



WITNESSES:

CDM SMITH INC., a Massachusetts corporation authorized to transact business in the state of Florida

\_\_\_\_\_

By: \_\_\_\_\_

\_\_\_\_\_

Print Name

Aamod Sonawane, P.E.  
Vice President

\_\_\_\_\_

\_\_\_\_\_

Print Name

(CORPORATE SEAL)

STATE OF \_\_\_\_\_:

COUNTY OF \_\_\_\_\_:

The foregoing instrument was acknowledged before me by means of  physical presence or  online notarization, this \_\_\_\_\_ day of \_\_\_\_\_, 2022, by Aamod Sonawane as Vice President for CDM SMITH INC., a Massachusetts corporation authorized to transact business in the state of Florida .

\_\_\_\_\_  
(Signature of Notary Public - State of Florida)

\_\_\_\_\_  
(Print, Type, or Stamp Commissioned Name of Notary Public)

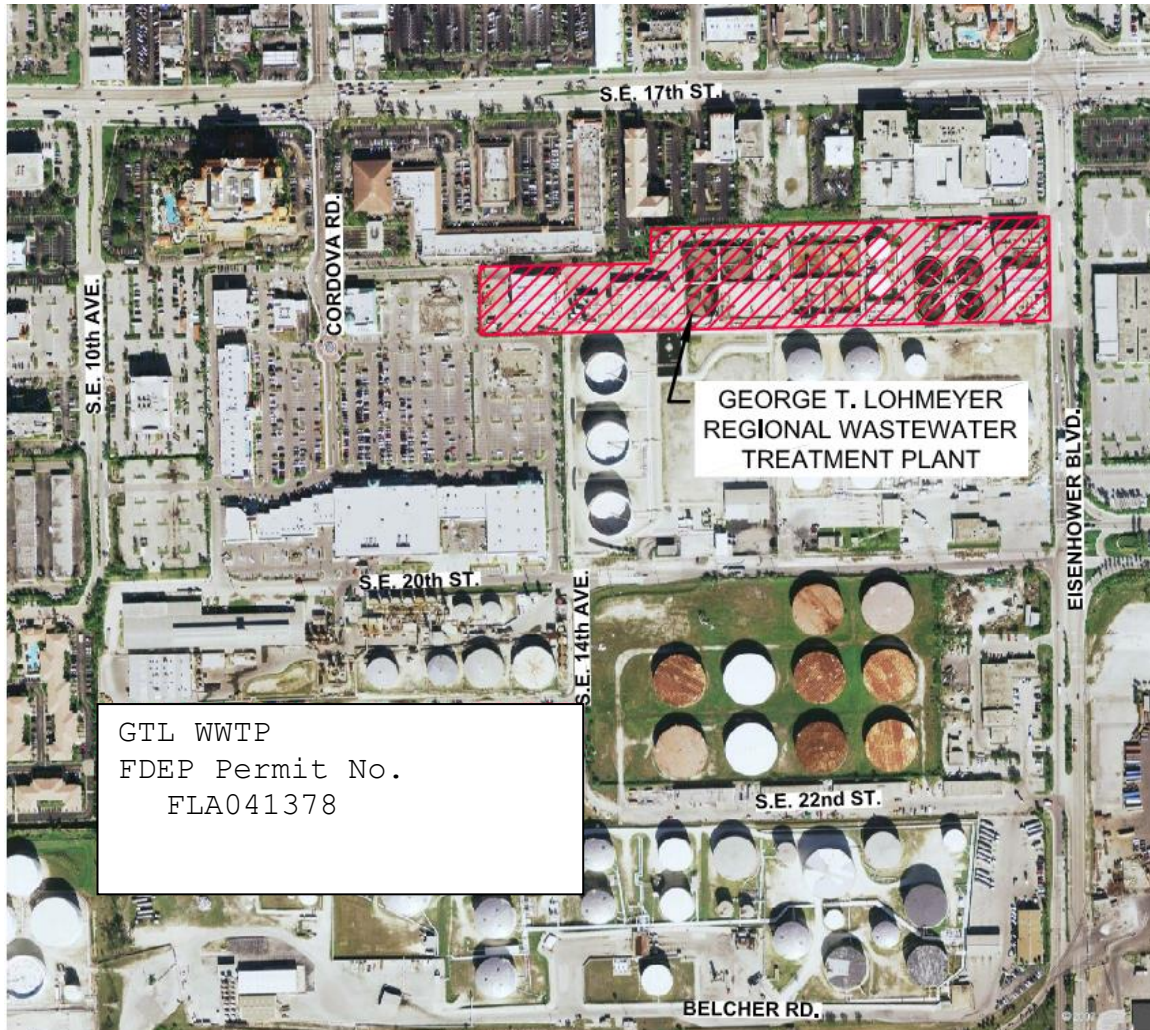
Personally Known \_\_\_\_\_ OR Produced Identification \_\_\_\_\_

Type of Identification Produced: \_\_\_\_\_

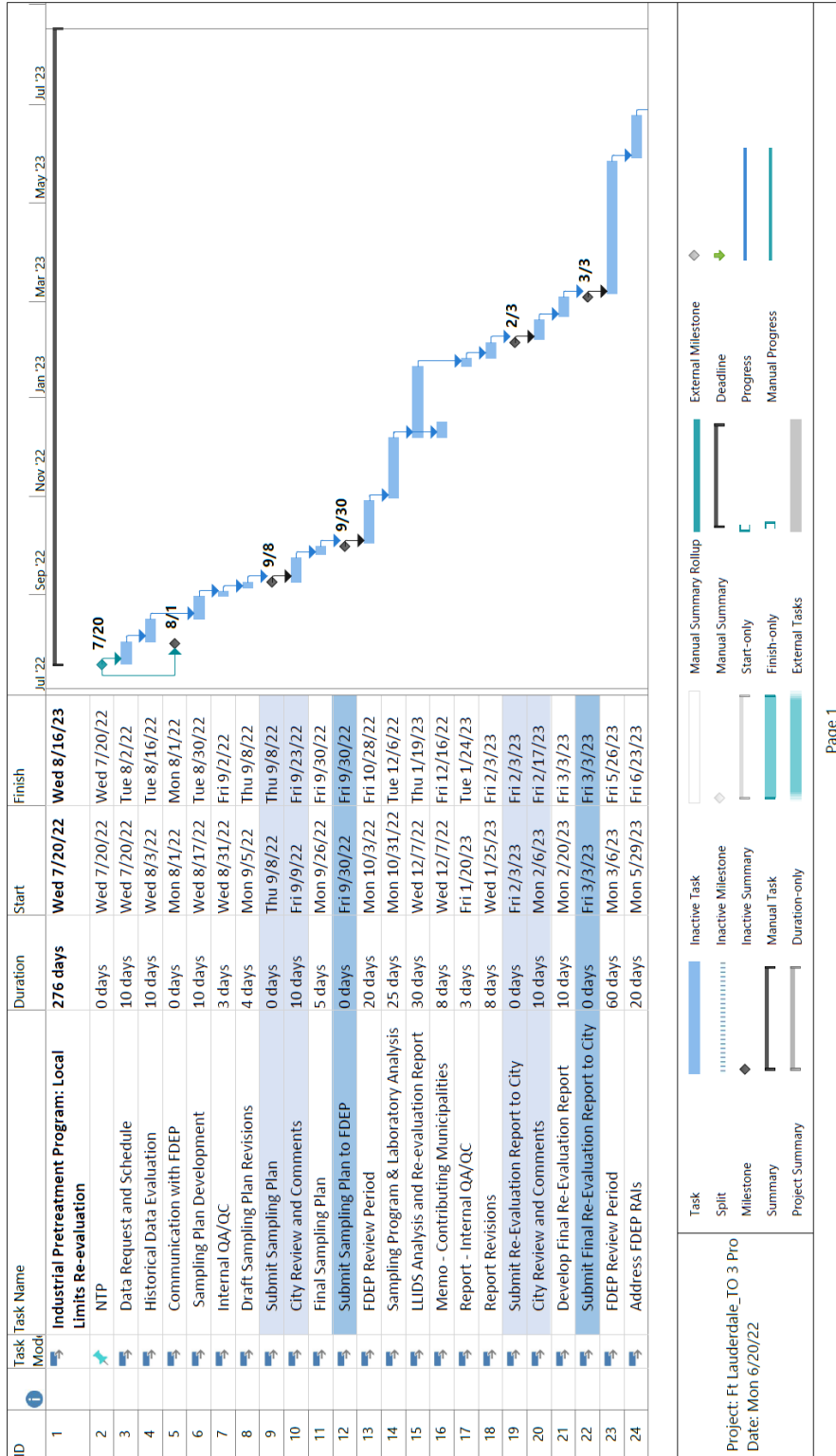
Exhibit A - Work Breakdown Fee Schedule

Task Name:	Task 1.0		Task 2.0		Task 3.0		Task 4.0		Task 5.0		Task 6.0		Task 7.0		Totals	
	Labor Category	Hourly Billing Rate	Hours	Amount	Hours	Amount	Hours	Amount	Hours	Amount	Hours	Amount	Hours	Amount	Hours	Amount
Senior Project Manager	\$ 230.00	2	\$ 460.00	\$ -	2	\$ 460.00	2	\$ 460.00	2	\$ 460.00	2	\$ 460.00	2	\$ 460.00	10	\$ 2,300.00
Project Manager	\$ 190.00	18	\$ 3,420.00	\$ 760.00	4	\$ 760.00	12	\$ 2,280.00	16	\$ 3,040.00	8	\$ 1,520.00	2	\$ 380.00	68	\$ 12,920.00
Senior Engineer	\$ 200.00		\$ -	\$ -		\$ -		\$ -		\$ -		\$ -		\$ -	0	\$ -
Project Engineer	\$ 170.00		\$ -	\$ -		\$ -		\$ -		\$ -		\$ -		\$ -	0	\$ -
Engineer	\$ 135.00	62	\$ 8,370.00	\$ 3,240.00	24	\$ 3,240.00	8	\$ 1,080.00	108	\$ 14,580.00	40	\$ 5,400.00	12	\$ 1,620.00	278	\$ 37,530.00
Associate Engineer	\$ 110.00	50	\$ 5,500.00	\$ 2,200.00	20	\$ 2,200.00	4	\$ 440.00	66	\$ 7,260.00	18	\$ 1,980.00	8	\$ 880.00	174	\$ 19,140.00
CADD Designer	\$ 100.00		\$ -	\$ -		\$ -		\$ -		\$ -		\$ -		\$ -	0	\$ -
CADD Technician	\$ 85.00		\$ -	\$ -		\$ -		\$ -	14	\$ 1,190.00	2	\$ 170.00		\$ -	20	\$ 1,700.00
Clerical	\$ 80.00	17	\$ 1,360.00	\$ 160.00	2	\$ 160.00	2	\$ 160.00	16	\$ 1,280.00	10	\$ 800.00	1	\$ 80.00	58	\$ 4,640.00
<b>Total Labor</b>		<b>149</b>	<b>\$ 19,110.00</b>	<b>\$ 6,360.00</b>	<b>50</b>	<b>\$ 6,360.00</b>	<b>26</b>	<b>\$ 3,960.00</b>	<b>222</b>	<b>\$ 27,810.00</b>	<b>80</b>	<b>\$ 10,330.00</b>	<b>52</b>	<b>\$ 6,900.00</b>	<b>608</b>	<b>\$ 78,230.00</b>
<b>Subconsultant</b>																
PACE Analytical Services, LLC			\$ -	\$ 37,078.00		\$ -		\$ -		\$ -		\$ -		\$ 5,113.50		\$ 42,191.50
Total Labor			\$ 19,110.00	\$ 6,360.00		\$ 3,960.00		\$ 27,810.00		\$ 10,330.00		\$ 6,900.00		\$ 3,760.00		\$ 78,230.00
Total Subconsultant			\$ -	\$ 37,078.00		\$ -		\$ -		\$ -		\$ -		\$ 5,113.50		\$ 42,191.50
<b>TOTAL LABOR AND SUBCONSULTANT</b>			<b>\$ 19,110.00</b>	<b>\$ 43,438.00</b>		<b>\$ 3,960.00</b>		<b>\$ 27,810.00</b>		<b>\$ 10,330.00</b>		<b>\$ 6,900.00</b>		<b>\$ 8,873.50</b>		<b>\$ 120,421.50</b>

**Exhibit B – Location Map**



### Exhibit C – Preliminary Project Schedule



ID	Task Mod	Task Name	Duration	Start	Finish	Jul '22	Sep '22	Nov '22	Jan '23	Mar '23	May '23	Jul '23
25		Submit Revised Final Re-Evaluation Report to City	0 days	Fri 6/23/23	Fri 6/23/23							6/23
26		New Limit Coordination with Industries	38 days	Mon 6/26/23	Wed 8/16/23							

Task Split Milestone Summary Project Summary	Inactive Task Inactive Milestone Inactive Summary Manual Task Duration-only	Manual Summary Rollup Manual Summary Start-only Finish-only External Tasks	External Milestone Deadline Progress Manual Progress
--	---	--	---

Project: Ft. Lauderdale\_TO 3 Pro  
 Date: Mon 6/20/22