



# SECTION 1

## TABLE OF CONTENTS

- Section 1 Table of Contents..... 1
- Section 2 Proposal Letter / Letter of Interest / Proposal Signature Form..... 2
  - Letter of Interest ..... 3
  - Bid/Proposal Signature Page..... 4
- Section 3 Qualifications of the Firm..... 5
  - Standard Form 330 ..... 6
- Section 4 Qualifications of the Project Team..... 20
  - Organizational Chart ..... 21
  - Standard Form 330 Resumes..... 22
- Section 5 Project Manager's Experience ..... 34
- Section 6 Approach to Scope of Work ..... 35
- Section 7 References..... 41
- Section 8 Minority/Women (M/WBE) Participation..... 45
- Section 9 Sample Insurance Certificate ..... 46
- Section 10 Joint Ventures ..... 47
- Section 11 Sub-consultants ..... 48
- Section 12 Non-Collusion Statement / Local Business Statement ..... 49
  - Non-Collusion Statement..... 50
  - Local Business Preference Certification Statement ..... 51
  - Broward County Business Tax Receipt..... 52



## SECTION 2 PROPOSAL LETTER / LETTER OF INTEREST / PROPOSAL SIGNATURE FORM

See the following pages.



March 31, 2014

City of Fort Lauderdale, City Hall  
Division of Procurement Services  
100 N. Andrews Avenue, Room 619  
Fort Lauderdale, Florida 33301

**RE: RFQ No. 246-11389**  
**Civil / Environmental Engineering Services for City of Fort Lauderdale**  
**Riveroaks Neighborhood and Stormwater Preserve Park**

Dear Selection Committee Members:

**Calvin, Giordano & Associates, Inc. (CGA)** is pleased to submit our statement of qualifications to provide professional consulting services for the above-referenced project. CGA is a well-established, multi-disciplinary firm with offices located in Fort Lauderdale, West Palm Beach, Port St. Lucie, and Homestead. For more than 76 years, our firm has been providing consulting services to the Florida region.

We have assembled a team of qualified professionals possessing the diversity of technical skills such as is required for this project. The team is fully committed to dedicating the necessary manpower, expertise, and attentiveness to ensure that the City of Fort Lauderdale meets its objectives through the provision of these services.

If selected, **Calvin, Giordano & Associates, Inc.** located at 1800 Eller Drive, Suite 600, Fort Lauderdale, Florida 33316, will be the responsible office for this contract. I, Dennis J. Giordano will serve as Principal-in-Charge, and Jenna Martinetti, PE will serve as Project Manager. We can be reached at (954) 921-7781, (954) 921-8807 (Fax), or at [dgiordano@cgasolutions.com](mailto:dgiordano@cgasolutions.com), [jmartinetti@cgasolutions.com](mailto:jmartinetti@cgasolutions.com).

Thank you for giving us the opportunity to respond to this RFQ. We know that we have the experience, desire, and dedication to meet the needs of the City with the highest degree of professionalism, which will result in the successful completion of all services related to this contract.

Sincerely,  
**CALVIN, GIORDANO & ASSOCIATES, INC.**

Dennis J. Giordano  
President

- Building Code Services
- Coastal Engineering
- Code Enforcement
- Construction Engineering & Inspection
- Construction Services
- Contract Government
- Data Technologies & Development
- Emergency Management Services
- Engineering
- Governmental Services
- Indoor Air Quality
- Landscape Architecture & Environmental Services
- Municipal Engineering Planning
- Public Administration
- Redevelopment & Urban Design
- Renewable Energy
- Resort Development
- Surveying & Mapping
- Transportation Planning & Traffic Engineering
- Utility & Community Maintenance Services
- Water Resources Management

1800 Eller Drive, Suite 600  
Fort Lauderdale, FL 33316  
Phone: 954.921.7781  
Fax: 954.921.8807

[www.cgasolutions.com](http://www.cgasolutions.com)

BID/PROPOSAL SIGNATURE PAGE

**How to submit bids/proposals:** Proposals must be submitted by hard copy only. It will be the sole responsibility of the Bidder to ensure that the bid reaches the City of Fort Lauderdale, City Hall, Procurement Services Division, Suite 619, 100 N. Andrews Avenue, Fort Lauderdale, FL 33301, prior to the bid opening date and time listed. Bids/proposals submitted by fax or email will NOT be accepted.

The below signed hereby agrees to furnish the following article(s) or services at the price(s) and terms stated subject to all instructions, conditions, specifications addenda, legal advertisement, and conditions contained in the bid. I have read all attachments including the specifications and fully understand what is required. By submitting this signed proposal I will accept a contract if approved by the CITY and such acceptance covers all terms, conditions, and specifications of this bid/proposal.

**Please Note:** All fields below **must** be completed. If the field does not apply to you, please note N/A in that field.

Submitted by: [Signature] March 27, 2014  
(signature) (date)

Name (printed) Dennis J. Giordano Title: President

Company: (Legal Registration) Calvin, Giordano & Associates, Inc.

**CONTRACTOR, IF FOREIGN CORPORATION, MAY BE REQUIRED TO OBTAIN A CERTIFICATE OF AUTHORITY FROM THE DEPARTMENT OF STATE, IN ACCORDANCE WITH FLORIDA STATUTE §607.1501 (visit <http://www.dos.state.fl.us/>).**

Address: 1800 Eller Drive, Suite 600

City Fort Lauderdale State: Florida Zip 33316

Telephone No. (954) 921-7781 FAX No. (954) 921-8807 Email: dgiordano@cgasolutions.com

Delivery: Calendar days after receipt of Purchase Order (section 1.02 of General Conditions): N/A

Payment Terms (section 1.04): N/A Total Bid Discount (section 1.05): N/A

Does your firm qualify for MBE or WBE status (section 1.09): MBE NO WBE NO

**ADDENDUM ACKNOWLEDGEMENT** - Proposer acknowledges that the following addenda have been received and are included in the proposal:

Addendum No. NONE Date Issued N/A

**P-CARDS: Will your firm accept the City's Credit Card as payment for goods/services?**

YES \_\_\_\_\_ NO X

**VARIANCES:** State any variations to specifications, terms and conditions in the space provided below or reference in the space provided below all variances contained on other pages of bid, attachments or bid pages. No variations or exceptions by the Proposer will be deemed to be part of the bid submitted unless such variation or exception is listed and contained within the bid documents and referenced in the space provided below. If no statement is contained in the below space, it is hereby implied that your bid/proposal complies with the full scope of this solicitation. **HAVE YOU STATED ANY VARIANCES OR EXCEPTIONS BELOW? BIDDER MUST CLICK THE EXCEPTION LINK IF ANY VARIATION OR EXCEPTION IS TAKEN TO THE SPECIFICATIONS, TERMS AND CONDITIONS.** If this section does not apply to your bid, simply mark N/A in the section below.

Variations: None

revised 11-29-11





## SECTION 3 QUALIFICATIONS OF THE FIRM

Calvin, Giordano & Associates, Inc. (CGA) is a multi-disciplinary firm that began as a small two person-surveying firm in Florida over 76 years ago. From 1937 to 2014 we have grown to over 300 employees, expanded geographically with offices in Fort Lauderdale, West Palm Beach, Port St. Lucie, Homestead, Clearwater, Jacksonville and Atlanta, Georgia.

Since its inception, CGA has served as professional consultants to various municipalities throughout Florida including the Cities of Sunny Isles Beach, Hollywood, Miami Beach, North Miami Beach, Pembroke Pines, Dania Beach, Weston and the Towns of Surfside, Medley, Davie, and Bay Harbor Island, many of which have been repeat clients for more than twenty (20) years.

Calvin, Giordano & Associates has strategically added an exceptionally broad range of services to meet our clients' needs. Our professional services include:

- Civil Engineering
- Stormwater Management
- Construction Management Services and Inspection
- Electrical Engineering
- Coastal Engineering
- Redevelopment and Urban Design
- Landscape Architecture
- Transportation Planning
- Traffic Engineering Services
- Planning and Zoning
- Geographical Information Services
- Building Code Services
- Code Enforcement
- Information Technologies
- Survey and Mapping
- Environmental and Permitting
- Indoor Air Quality
- Emergency Management Services
- Utilities

### STANDARD FORM 330

See the following pages for Calvin, Giordano & Associates Standard Form 330.

**STANDARD FORM 330  
ARCHITECT - ENGINEER QUALIFICATIONS**

**PART I - CONTRACT-SPECIFIC QUALIFICATIONS**

**A. CONTRACT INFORMATION**

1. TITLE AND LOCATION *(City and State)*  
**CIVIL / ENVIRONMENTAL ENGINEERING SERVICES FOR RIVEROAKS NEIGHBORHOOD AND STORMWATER PRESERVE PARK, FORT LAUDERDALE, FLORIDA**
2. PUBLIC NOTICE DATE  
**MARCH 12, 2014**
3. SOLICITATION OR PROJECT NUMBER  
**RFQ #246-11389**

**B. ARCHITECT-ENGINEER POINT OF CONTACT**

4. NAME AND TITLE  
**DENNIS J. GIORDANO / PRESIDENT**
5. NAME OF FIRM  
**CALVIN, GIORDANO & ASSOCIATES, INC.**
6. TELEPHONE NUMBER  
**(954) 921-7781**
7. FAX NUMBER  
**(954) 921-8807**
8. E-MAIL ADDRESS  
**DGIORDANO@CGASOLUTIONS.COM**

**C. PROPOSED TEAM**

*(Complete this section for the prime contractor and all key subcontractors.)*

	<i>(Check)</i>			9. FIRM NAME	10. ADDRESS	11. ROLE IN THIS CONTRACT
	PRIME	J-V PARTNER	SUBCONTRACTOR			
a.	<input checked="" type="checkbox"/>			<b>Calvin, Giordano &amp; Associates, Inc.</b> <input type="checkbox"/> CHECK IF BRANCH OFFICE	<b>1800 Eller Drive, Suite 600 Fort Lauderdale, Florida 33316</b>	<b>Landscape Architecture, Civil Engineering, Traffic Engineering, Electrical Engineering, Surveying, GIS, Planning, Construction Admin., Environmental</b>
b.			<input checked="" type="checkbox"/>	<b>Dickey Consulting Services, Inc.</b> <input type="checkbox"/> CHECK IF BRANCH OFFICE	<b>P.O. Box 892 Ft. Lauderdale, Florida 33302</b>	<b>Public Outreach</b>
c.			<input checked="" type="checkbox"/>	<b>Lakdas/Yohalem Engineering, Inc. (LYE)</b> <input type="checkbox"/> CHECK IF BRANCH OFFICE	<b>2211 NE 54th Street Fort Lauderdale, Fl. 33308</b>	<b>Structural</b>
d.			<input checked="" type="checkbox"/>	<b>RADISE International, LC</b> <input type="checkbox"/> CHECK IF BRANCH OFFICE	<b>4152 West Blue Heron Blvd Suite #228 Riviera Beach, Florida 33404</b>	<b>Geotechnical</b>
e.				<input type="checkbox"/> CHECK IF BRANCH OFFICE		
f.				<input type="checkbox"/> CHECK IF BRANCH OFFICE		

<b>F. EXAMPLE PROJECTS WHICH BEST ILLUSTRATE PROPOSED TEAM'S QUALIFICATIONS FOR THIS CONTRACT</b> <i>(Present as many projects as requested by the agency, or 10 projects, if not specified. Complete one Section F for each project.)</i>	20. EXAMPLE PROJECT KEY NUMBER <b>1</b>
---	--

21. TITLE AND LOCATION (City and State) <b>DANIA COVE PARK</b> <b>DANIA BEACH, FLORIDA</b>	22. YEAR COMPLETED	
	PROFESSIONAL SERVICES <b>2011</b>	CONSTRUCTION <i>(If applicable)</i>

23. PROJECT OWNER'S INFORMATION		
a. PROJECT OWNER <b>CITY OF DANIA BEACH</b>	b. POINT OF CONTACT NAME <b>KRISTEN L. JONES, MS</b> <b>DIRECTOR, PR DEPARTMENT</b>	c. POINT OF CONTACT TELEPHONE NUMBER <b>(954) 924-6800</b>

24. BRIEF DESCRIPTION OF PROJECT AND RELEVANCE TO THIS CONTRACT *(Include scope, size, and cost)*

CGA developed a waterfront park design on an archeologically significant site in the City of Dania Beach with a scenic mangrove cove, using the site's history as an opportunity to showcase its historical value and ecological importance. The park features waterfront elements, including a fishing dock and platform, picnic pavilions and an exercise path for the park users. An ADA compliant path was constructed to navigate through the site's features and ADA accessible tables were installed at various locations. Xeriscape, native planting was utilized to minimize the park's dependence on irrigation, and plants were selected for their educational opportunities in highlighting their butterfly attracting varieties and towering Oak trees. The park contains a historic Indian midden, which serves as an opportunity for historical education. The scope included a phased approach to obtain grant funding for the City, while phase II is envisioned to include a second scenic overlook area and a bridge to provide a continuous path to loop around the cove's feature.



**25. FIRMS FROM SECTION C INVOLVED WITH THIS PROJECT**

a.	(1) FIRM NAME Calvin, Giordano & Associates	(2) FIRM LOCATION <i>(City and State)</i> Ft. Lauderdale, FL	(3) ROLE Landscape Architecture, Surveying, Civil Engineering, Irrigation Design, Construction Administration, Environmental Planning/Graphics
b.			
c.			
d.			



<b>F. EXAMPLE PROJECTS WHICH BEST ILLUSTRATE PROPOSED TEAM'S QUALIFICATIONS FOR THIS CONTRACT</b> <i>(Present as many projects as requested by the agency, or 10 projects, if not specified. Complete one Section F for each project.)</i>	20. EXAMPLE PROJECT KEY NUMBER <b>2</b>
---	--

21. TITLE AND LOCATION (City and State) <b>DANIA COVE PARK SHORELINE STABILIZATION</b> <b>DANIA BEACH, FLORIDA</b>	22. YEAR COMPLETED	
	PROFESSIONAL SERVICES <b>2011</b>	CONSTRUCTION <i>(If applicable)</i>

23. PROJECT OWNER'S INFORMATION		
a. PROJECT OWNER <b>CITY OF DANIA BEACH</b>	b. POINT OF CONTACT NAME <b>KRISTEN L. JONES, MS</b> <b>DIRECTOR, PR DEPARTMENT</b>	c. POINT OF CONTACT TELEPHONE NUMBER <b>(954) 924-6800</b>

24. BRIEF DESCRIPTION OF PROJECT AND RELEVANCE TO THIS CONTRACT *(Include scope, size, and cost)*

CGA developed a waterfront park design on an archeologically significant site in the City of Dania Beach; the site, which contains a scenic mangrove cove, is located along the Dania Cut-off canal. The park design features waterfront elements, including a fishing dock and platform, picnic pavilions and an exercise path for the park users. Native plantings were used to eliminate the park's need for permanent irrigation, and plants were selected for their educational opportunities including highlighting the butterfly attracting varieties. The project scope included designing the site amenities to preserve and highlight the remnant Oak Hammock; designing a stabilization system for the shoreline embankment along with vegetating the shoreline (before and after pictures shown above); designing informational kiosks featuring the historic Native American midden and the site's natural resources; and obtaining all required permits for the installation of the site features. The natural site grades were maintained to the extent possible and an ADA compliant path was constructed to navigate through the site's features. A State and a County Grant were provided to assist in the project costs. The scope also included coordinating with the County and State on gaining approval for the site design, tracking all expenditures and processing and obtaining all grant funds for the City, and closing out the grants and permits.



25. FIRMS FROM SECTION C INVOLVED WITH THIS PROJECT

a. (1) FIRM NAME Calvin, Giordano & Associates, Inc.	(2) FIRM LOCATION <i>(City and State)</i> Fort Lauderdale, FL	(3) ROLE Landscape Architecture, Surveying, Environmental Planning/Permitting/ Graphics, Civil Engineering, Construction Administration
b.		
c.		
d.		



<b>F. EXAMPLE PROJECTS WHICH BEST ILLUSTRATE PROPOSED TEAM'S QUALIFICATIONS FOR THIS CONTRACT</b> <i>(Present as many projects as requested by the agency, or 10 projects, if not specified. Complete one Section F for each project.)</i>		<b>20. EXAMPLE PROJECT KEY NUMBER</b> <b>3</b>
<b>21. TITLE AND LOCATION (City and State)</b> <b>DANIA COVE PARK – PARK SIGNS</b> <b>DANIA BEACH, FLORIDA</b>		<b>22. YEAR COMPLETED</b> PROFESSIONAL SERVICES <b>2011</b> CONSTRUCTION <i>(If applicable)</i>
<b>23. PROJECT OWNER'S INFORMATION</b>		
<b>b. PROJECT OWNER</b> <b>CITY OF DANIA BEACH</b>	<b>b. POINT OF CONTACT NAME</b> <b>KRISTEN L. JONES, MS</b> <b>DIRECTOR PR DEPARTMENT</b>	<b>c. POINT OF CONTACT TELEPHONE NUMBER</b> <b>(954) 924-6800</b>

**24. BRIEF DESCRIPTION OF PROJECT AND RELEVANCE TO THIS CONTRACT (Include scope, size, and cost)**

As a part of the park's design for the Dania Cove Park, CGA created a series of informational panels and environmental graphics to be installed on-site. The purpose of the graphics was to provide an educational component to the park to teach park users about the archeological significance of the site – as it was the location of an Indian midden mound – as well as the important natural features of the site. An opportunity was found to also include historical panels to celebrate the history of the City of Dania Beach, as well as to highlight design features of the park design – such as the butterfly attractor plants. The graphics were fabricated using Systeme Huntington's Folia exterior grade, full-color Phenolic-fused Graphic Panel product.



<b>25. FIRMS FROM SECTION C INVOLVED WITH THIS PROJECT</b>		
<b>a. (1) FIRM NAME</b> Calvin, Giordano & Associates, Inc.	<b>(2) FIRM LOCATION (City and State)</b> Fort Lauderdale, FL	<b>(3) ROLE</b> Landscape Architecture, Surveying, Environmental Planning/Permitting/ Graphics, Civil Engineering, Construction Administration
<b>b.</b>		
<b>c.</b>		
<b>d.</b>		

<b>F. EXAMPLE PROJECTS WHICH BEST ILLUSTRATE PROPOSED TEAM'S QUALIFICATIONS FOR THIS CONTRACT</b> <i>(Present as many projects as requested by the agency, or 10 projects, if not specified. Complete one Section F for each project.)</i>	20. EXAMPLE PROJECT KEY NUMBER <b>4</b>
---	--

21. TITLE AND LOCATION <i>(City and State)</i> <b>WETLAND MITIGATION COMPLIANCE MONITORING AND REPORTING HOLLYWOOD, FLORIDA</b>	22. YEAR COMPLETED	
	PROFESSIONAL SERVICES <b>1999 - ONGOING</b>	CONSTRUCTION <i>(If applicable)</i>

23. PROJECT OWNER'S INFORMATION		
a. PROJECT OWNER <b>VARIOUS LOCATIONS</b>	b. POINT OF CONTACT NAME <b>VARIOUS CONTACTS</b>	c. POINT OF CONTACT TELEPHONE NUMBER

24. BRIEF DESCRIPTION OF PROJECT AND RELEVANCE TO THIS CONTRACT *(Include scope, size, and cost)*

**Increment III, Weston:** Conducted the quarterly, five year compliance monitoring and reporting program on 1,535 acres of sawgrass marsh, tree island, constructed refugia, and lake-shelf habitat, documented utilization by a wide variety of wildlife including the federally listed Snail Kite.

**Pembroke Falls, Pembroke Pines:** Conducted the quarterly, five year compliance monitoring and reporting program on 203.69 acres of forested wetland, marsh, hammock, and open water with documented Wood Stork utilization.

**Memorial Hospital, Miramar:** Conducted the quarterly, five year compliance monitoring and reporting program on 51.08 acres containing slough, marsh, wet prairie, and tree island habitat; documented utilization by flamingos.

**Isles at Weston, Weston:** Conducted the quarterly, five year compliance monitoring and reporting program on 64.55 acres of marsh containing shallow channels and hydric islands which also contains an archaeological site.

**Berman Preserve, Davie:** Conducted the quarterly, five year compliance monitoring and reporting program on 28.4 acres of marsh, tree islands, slough, forested uplands, and forested wetlands.

**Blessed John XXIII Religious Facility, Miramar:** Conducted the quarterly, five year compliance monitoring and reporting program on 6.72 acres of slough, marsh, and wet prairie habitat located among other mitigation sites.

**Pembroke Harbor, Pembroke Pines:** Conducted the quarterly, five year compliance monitoring and reporting program on 31.2 acres of wetland containing emergent marsh, tree islands, and open water with a hydric berm separating the mitigation from an adjacent drainage canal.

**Miramar Pinelands:** Conducted the quarterly, five year compliance monitoring and reporting program on 31.9 acres of wetland creation located on Broward County Park land at the historic head of the Snake Creek slough, contains open water and wet prairie habitat.

**Phillips Plat, Port Everglades:** Conducted the quarterly, five year compliance monitoring and reporting program on 8.6 acres of tidally influenced mangrove habitat recognized as a Local Area of Particular Concern by Broward County.

**Maple Ridge:** Conducted the quarterly, five year compliance monitoring and reporting program on 1.7 acres of Red Maple swamp with a dense fern under story located in an urban setting.

**Verizon:** Conducted the quarterly, five year compliance monitoring and reporting program on 1.55 acres comprised of marsh habitat and tree islands.



**Storagemart:** Conducted the quarterly, five year compliance monitoring and reporting program on a 1 acre site comprised of hydric islands, a shallow channel and marsh habitat.

25. FIRMS FROM SECTION C INVOLVED WITH THIS PROJECT

a. (1) FIRM NAME	(2) FIRM LOCATION <i>(City and State)</i>	(3) ROLE
Calvin, Giordano & Associates, Inc.	Fort Lauderdale, FL	Wetland Mitigation Compliance, Monitoring and Reporting
b.		
c.		
d.		



<b>F. EXAMPLE PROJECTS WHICH BEST ILLUSTRATE PROPOSED TEAM'S QUALIFICATIONS FOR THIS CONTRACT</b> <i>(Present as many projects as requested by the agency, or 10 projects, if not specified. Complete one Section F for each project.)</i>	20. EXAMPLE PROJECT KEY NUMBER <b>5</b>
---	--

21. TITLE AND LOCATION (City and State) <b>BASIN 5 DRAINAGE IMPROVEMENTS</b> <b>DANIA BEACH, FLORIDA</b>	22. YEAR COMPLETED	
	PROFESSIONAL SERVICES <b>IN PROGRESS</b>	CONSTRUCTION <i>(If applicable)</i>

23. PROJECT OWNER'S INFORMATION		
a. PROJECT OWNER <b>CITY OF DANIA BEACH</b>	b. POINT OF CONTACT NAME <b>DOMINIC ORLANDO</b> <b>PUBLIC SERVICES DIRECTOR</b>	c. POINT OF CONTACT TELEPHONE NUMBER <b>(954) 924-3740</b>

24. BRIEF DESCRIPTION OF PROJECT AND RELEVANCE TO THIS CONTRACT *(Include scope, size, and cost)*

Basin 5 in the City of Dania Beach is comprised of approximately 400 acres. Repetitive Loss properties are located within the basin. CGA developed the Storm Water Master Plan for the Basin and evaluated the existing and proposed Level of Service of flood protection, and provided the City with a prioritized list of necessary improvements, including projected cost, for inclusion in their Capital Improvement Plan to address the flooding of streets and houses that currently occurs. CGA is also providing the design, environmental assessment and permitting services for the implementation of these improvements.

Currently, existing outfalls discharge untreated stormwater run-off directly into Broward County owned parcels east of S.E. 5th Avenue; approximately 1,000 feet east of the County owned parcels is the State owned West Lake Regional Park which is recognized as Outstanding Florida Waters. The County lands are wetland mangrove habitat and serve as buffers for West Lake Regional Park and are covered under restrictive covenants and a Charter. Under historic conditions, sheet flows of fresh water from the west kept this tidally influenced mangrove habitat from becoming hyper-saline. The construction of S.E. 5th Avenue and the adjacent development interrupted the historic flows of freshwater to the east. To help alleviate the concerns for salinity, the currently existing outfalls from basin 5 were installed.

As a part of the Basin 5 drainage improvements design, discharges through the existing outfalls will be discontinued and all future discharges through the new system will receive pretreatment and be released into a bio-swale along S.E. 5th Avenue prior to discharge to the east. A component of the swale design is the installation of sheet pile to create a spreader swale to recreate historic sheet flow conditions. The composite sheet pile material creates a uniform edge that will not be subject to erosion or wash-out and can be installed by hand with little to no impact to surrounding habitat.

CGA has designed this unique stormwater improvement system to benefit both the developed and adjacent natural habitats. CGA conducted all the site and wetland functional assessments for permitting and processed permits through the U.S. ACOE, the South Florida Water Management District and Broward County; permitting required extensive negotiation with various Divisions of Broward County including the development of an Agreement with the County and City for use of the County land, and approval by the County Commission. The construction of the bio-swale did require unavoidable impacts to wetlands; however, the design of the swale included removal of all exotic vegetation, excavation of marginal wetland habitat with revegetation, and increased hydrology to low quality wetlands thereby creating enhancements with a greater functional gain than the functional loss.



25. FIRMS FROM SECTION C INVOLVED WITH THIS PROJECT

	(1) FIRM NAME	(2) FIRM LOCATION <i>(City and State)</i>	(3) ROLE
a.	Calvin, Giordano & Associates, Inc.	Fort Lauderdale, FL	Engineering, Surveying, Permitting, Environmental, Construction Services
b.			
c.			
d.			

<b>F. EXAMPLE PROJECTS WHICH BEST ILLUSTRATE PROPOSED TEAM'S QUALIFICATIONS FOR THIS CONTRACT</b> <i>(Present as many projects as requested by the agency, or 10 projects, if not specified. Complete one Section F for each project.)</i>		20. EXAMPLE PROJECT KEY NUMBER <b>6</b>
21. TITLE AND LOCATION (City and State) <b>HALLANDALE BEACH NE QUADRANT DRAINAGE BASIN STUDY &amp; IMPLEMENTATION</b> <b>HALLANDALE BEACH, FLORIDA</b>		22. YEAR COMPLETED PROFESSIONAL SERVICES <b>IN PROGRESS</b> CONSTRUCTION <i>(If applicable)</i> <b>IN PROGRESS</b>
23. PROJECT OWNER'S INFORMATION		
a. PROJECT OWNER <b>CITY OF HALLANDALE BEACH</b>	b. POINT OF CONTACT NAME <b>RICHARD LABINSKY, PE</b> <b>CITY ENGINEER</b>	c. POINT OF CONTACT TELEPHONE NUMBER <b>(954) 457-1620</b>

24. BRIEF DESCRIPTION OF PROJECT AND RELEVANCE TO THIS CONTRACT *(Include scope, size, and cost)*

CGA is currently finalizing the construction inspection services for the stormwater design project for the Hallandale Beach NE Quadrant Drainage Basin which encompasses an area of approximately 170± acres. This tidally influenced basin is bounded by Atlantic Shores Boulevard, Federal Highway (US-1), Hallandale Beach Blvd (HBB), and NW 14th Avenue in the City of Hallandale Beach, Florida. Land uses within the study area are primarily single family residential and multi-family residential.

There are a number of drainage facilities within the project area with limited conveyance capacity and high head loss. Average lowest floor elevations average between 5.5' to 6.5' NGVD, and roadway elevations are approximately 3.7' to 3.9' NGVD within the study area. The conveyance system is subject to the effects of tidal fluctuation; and therefore at times there is virtually no head available to drain the basin. The lack of conveyance capacity within this system has led to 37 Severe Repetitive Loss (RL) properties and the complete inundation of the roadway system for extended periods during storm events of lesser frequency than that required by SFWMD.

Using ICPR, CGA modeled a proposed system with an improved collection system conveying water to two duplex pump stations connected to a total of sixteen wells. These sixteen new wells will be pressurized with fifteen (15) feet of head in order to produce the necessary discharge into the G-III aquifer. In addition, the existing collection system piping will be upsized in order to achieve adequate flows into the proposed pump stations. The existing gravity outfalls will be left intact, with the only modification being the installation of a "backflow" flap gate in a City structure at the downstream end of the gravity system. The flap gate will stop the tidal water from flowing back into the gravity system at higher tides. The project is permitted through FDEP and the Broward County Environmental Resource Department. CGA, in conjunction with the City of Hallandale Beach, worked with FEMA to get an expansion approved for the existing HMGP grant. The expansion was approved to provide over 15 million in funding for this project and another project for the adjacent neighborhood.



25. FIRMS FROM SECTION C INVOLVED WITH THIS PROJECT

a.	(1) FIRM NAME	(2) FIRM LOCATION <i>(City and State)</i>	(3) ROLE
	Calvin, Giordano & Associates, Inc.	Fort Lauderdale, FL	Drainage Study, Pump Station & Drainage Well Design and Permitting
b.			
c.			
d.			



<b>F. EXAMPLE PROJECTS WHICH BEST ILLUSTRATE PROPOSED TEAM'S QUALIFICATIONS FOR THIS CONTRACT</b> <i>(Present as many projects as requested by the agency, or 10 projects, if not specified. Complete one Section F for each project.)</i>		20. EXAMPLE PROJECT KEY NUMBER <b>7</b>
21. TITLE AND LOCATION <i>(City and State)</i> <b>LLOYD ESTATES          OAKLAND PARK, FLORIDA</b>	22. YEAR COMPLETED	
	PROFESSIONAL SERVICES <b>2013 - PRESENT</b>	CONSTRUCTION <i>(If applicable)</i>

**23. PROJECT OWNER'S INFORMATION**

a. PROJECT OWNER <b>CITY OF OAKLAND PARK</b>	b. POINT OF CONTACT NAME <b>JOHN PEREZ</b>	c. POINT OF CONTACT TELEPHONE NUMBER <b>(954) 630-4479</b>
---	---	---

**24. BRIEF DESCRIPTION OF PROJECT AND RELEVANCE TO THIS CONTRACT** *(Include scope, size, and cost)*

The Lloyd Estates residential neighborhood has a history of flooding problems due to undersized and/or damaged underground storm drainage collection systems and poorly graded and silted in above ground swales. The existing area experiences frequent flood conditions even at low intensity rain events due to limited discharge capacity and high tail water conditions downstream of the Sleepy River.

In order to increase the flood protection Level of Service for the area, additional swales/exfiltration trench and piping, and emergency flood gates and a pump station on the Sleepy River will be installed. The proposed drainage system improvements will mitigate a considerable amount of damage caused by storm events by providing additional water quality treatment volume and storage volume, thereby reducing the durations of roadway flooding. The proposed emergency flood gates and pump station will allow the City to aid in preventing the backflow of water from the C-13 canal into Lloyd Estates and to facilitate the lowering of the Sleepy River flood stages upstream of the structure so that the existing and proposed drainage improvements will function optimally.



**25. FIRMS FROM SECTION C INVOLVED WITH THIS PROJECT**

a. (1) FIRM NAME	(2) FIRM LOCATION <i>(City and State)</i>	(3) ROLE
Calvin, Giordano & Associates, Inc.	Fort Lauderdale, FL	Engineering, Landscape Architecture Surveying, Permitting, Construction Services
b.		
c.		
d.		

<b>F. EXAMPLE PROJECTS WHICH BEST ILLUSTRATE PROPOSED TEAM'S QUALIFICATIONS FOR THIS CONTRACT</b> <i>(Present as many projects as requested by the agency, or 10 projects, if not specified. Complete one Section F for each project.)</i>		20. EXAMPLE PROJECT KEY NUMBER <b>8</b>
21. TITLE AND LOCATION <i>(City and State)</i> <b>SURFSIDE UTILITY PROJECT</b> <b>SURFSIDE, FLORIDA</b>	22. YEAR COMPLETED	
	PROFESSIONAL SERVICES <b>2014</b>	CONSTRUCTION <i>(If applicable)</i>
23. PROJECT OWNER'S INFORMATION		
a. PROJECT OWNER <b>TOWN OF SURFSIDE</b>	b. POINT OF CONTACT NAME <b>RANDY STOKES</b> <b>CIP MANAGER</b>	c. POINT OF CONTACT TELEPHONE NUMBER <b>(954) 494-7497</b>

24. BRIEF DESCRIPTION OF PROJECT AND RELEVANCE TO THIS CONTRACT *(Include scope, size, and cost)*

**Stormwater Master Plan**

CGA designed, permitting and received multiple grants to improve conveyance from the streets and into drainage wells, thus reducing pollutant loads on Biscayne Bay.

CGA employed full time inspectors to oversee and direct the installation of nine drainage wells in three pump stations with pumps, controllers and appurtenances. The project also included the installation of 7,000 LF of RCP pipe and 14 control structures.

The inspectors were integral in the contractor/engineer coordination, documentation and implementation of the drainage system. The inspectors also acted as liaisons to the residents adjacent to the proposed drainage pump stations and were integral in obtaining resolution to control panel location that was acceptable to all parties.

**Wastewater Collection System Lining**

CGA initially televised and evaluated the Town's wastewater collection system and documented the lateral service locations, performing an I & I Study (or Sanitary Sewer Evaluation Study, SSES). After completion of the design, permitting and grant application approval the project was awarded to Ric Man International, Inc.

CGA employed full time inspectors to witness and direct the cleaning via high pressure water and mechanical means, television, point repair and lining throughout the three phase project. CGA inspectors were integral in the resin impregnated liner application and inversion process; ensuring that proper head pressure and temperature was applied throughout the curing process. With this inspection process we were able to greatly reduce the number of lines which typically need to be re-lined in a project of similar size.

CGA performed the study, witnessed the results of the cleaning, approved the cleaning prior to lining, observed the lining operation, observed the post video to accept the lined main, and coordinated samples of the liner for testing purposes (by independent lab).

**Water Main Replacement Phases I-III**

CGA has completed the design and permitting of over 33,000 linear feet of PVC water main replacement. This project will renew the water distribution system ensuring adequate fire flows as well as replacing rear yard services with mains running in the ROW.

CGA has employed two full time inspectors for the duration of this project to ensure that all installation meets or exceeds the plans, permits and code. CGA has also been instrumental in addressing any citizen concerns and/or questions promptly while in the field. The full time inspection of the project by CGA will allow the design engineer to issue a certification at the completion of the project stating that all work was performed in general compliance of the plans, specifications and permits.

25. FIRMS FROM SECTION C INVOLVED WITH THIS PROJECT		
a. (1) FIRM NAME	(2) FIRM LOCATION <i>(City and State)</i>	(3) ROLE
Calvin, Giordano & Associates	Fort Lauderdale, FL	Utility Engineering, Civil Engineering, Permitting, Construction Services, Surveying, Hydraulic Engineering, Landscape Architecture, GIS, Emergency Management
b.		
c.		
d.		

<b>F. EXAMPLE PROJECTS WHICH BEST ILLUSTRATE PROPOSED TEAM'S QUALIFICATIONS FOR THIS CONTRACT</b> <i>(Present as many projects as requested by the agency, or 10 projects, if not specified. Complete one Section F for each project.)</i>		20. EXAMPLE PROJECT KEY NUMBER <b>9</b>
21. TITLE AND LOCATION <i>(City and State)</i> <b>WESTON DRAINAGE</b> <b>WESTON, FLORIDA</b>		22. YEAR COMPLETED PROFESSIONAL SERVICES <b>2012</b> CONSTRUCTION <i>(If applicable)</i>
23. PROJECT OWNER'S INFORMATION		
c. PROJECT OWNER <b>CITY OF WESTON</b>	b. POINT OF CONTACT NAME <b>DENISE BARRETT</b> <b>DIRECTOR OF COMMUNICATIONS</b>	c. POINT OF CONTACT TELEPHONE NUMBER <b>(954) 385-2000</b>

24. BRIEF DESCRIPTION OF PROJECT AND RELEVANCE TO THIS CONTRACT *(Include scope, size, and cost)*

CGA analyzed and modeled the City's existing stormwater management system which consists of collection systems draining into interconnected lake system discharging into the South Florida Water Management District (SFWMD) canals. The City contains 15,000 acres of land within Indian Trace Development District (ITDD) and the Bonaventure Development District (BDD), both of which are within the South Florida Water Management District (SFWMD). The City is contained between the Everglades on the west, Griffin Road on the south, Interstate 75 on the east, and Interstate 75 on the north. The water quality and discharge rates are permitted to be controlled by stormwater pump stations. The results of the hydraulic model indicated that a few of the interconnecting culverts were undersized and the collections system needed upgrading. Site visits during rain events highlighted areas that had surface drainage issues. The scope of the project includes replacing undersized culverts and upgrading the collection system with new catch basins, piping, outfalls and French drains in different areas throughout the City. Traffic control phasing including limiting road closures on adjacent streets and detour routes were detailed in the construction documents in order to minimize impacts to the residents and road users in the City.

CGA secured grant funding for this project by modifying an existing HMGP grant that was used to upgrade the pump stations in 2009. The FEMA BCA software was utilized to apply for the modification and justify the project. CGA prepared and submitted all supporting documentation while working with the City and FDEM to obtain the additional funding for the vital project. The project will improve the water management system's hydraulic performance and lower the flood stage in flood-prone areas.



25. FIRMS FROM SECTION C INVOLVED WITH THIS PROJECT

a.	(1) FIRM NAME	(2) FIRM LOCATION <i>(City and State)</i>	(3) ROLE
	Calvin, Giordano & Associates	Fort Lauderdale, FL	Landscape Architecture, Survey and Mapping, Civil Engineering, Construction Administration
b.			
c.			
d.			



<b>F. EXAMPLE PROJECTS WHICH BEST ILLUSTRATE PROPOSED TEAM'S QUALIFICATIONS FOR THIS CONTRACT</b> <i>(Present as many projects as requested by the agency, or 10 projects, if not specified. Complete one Section F for each project.)</i>		20. EXAMPLE PROJECT KEY NUMBER <b>10</b>
21. TITLE AND LOCATION <i>(City and State)</i> <b>OAKLAND PARK BID PACK 9 PROJECT AREA</b> <b>INFRASTRUCTURE IMPROVEMENTS</b> <b>OAKLAND PARK, FLORIDA</b>		22. YEAR COMPLETED PROFESSIONAL SERVICES <b>2013</b> CONSTRUCTION <i>(If applicable)</i>
23. PROJECT OWNER'S INFORMATION		
a. PROJECT OWNER <b>CITY OF OAKLAND PARK</b>	b. POINT OF CONTACT NAME <b>HARRIS HAMID, PE</b> <b>DIRECTOR</b>	c. POINT OF CONTACT TELEPHONE NUMBER <b>(954) 630-4477</b>
24. BRIEF DESCRIPTION OF PROJECT AND RELEVANCE TO THIS CONTRACT <i>(Include scope, size, and cost)</i>		

The City of Oakland Park is one of the older municipalities in Broward County with boundaries that encompass approximately 4,400 acres. The City has reached development maturity and is focused on maintaining the existing infrastructure. Although the City does not operate a water or wastewater treatment plant, they do manage the water distribution and sewer collection system that serves a majority of the City. These systems are aging and are in need of rehabilitation and upgrades. In addition, the existing topography provides little relief for stormwater management, and therefore must depend on the efforts of the City, County and South Florida Water Management District for area wide drainage and flood control.

CGA was contracted by the City to design water, wastewater and drainage improvements to the 570-acre Bid Pack 9 area located in the eastern portion of the their service area. These improvements were identified in the City's Strategic Performance Area and Business Plan Initiative. The project included approximately 20,000 linear feet of water main replacement, 80 fire hydrants, 5,000 linear feet of force main and the design of the replacement of Lift Station B-2, Lift Station #3 and Lift Station #4. This area also contained five drainage projects that were identified as deficient areas in need of improvement in the City's Stormwater Master Plan. Due to a deficient drainage system and a recent storm event in October 2011, many of the residences experienced flood conditions throughout this area. CGA visited the area with City Staff to get a firsthand view of the effects of heavy rains. The City requested that CGA take these flooding issues into consideration in the design to optimize the amount of flood protection that could be added to the project.



25. FIRMS FROM SECTION C INVOLVED WITH THIS PROJECT		
a. (1) FIRM NAME	(2) FIRM LOCATION <i>(City and State)</i>	(3) ROLE
Calvin, Giordano & Associates	Fort Lauderdale, FL	Environmental/Civil Engineering, Surveying and Mapping, Permitting, Project Management, Bidding Services
b.		
c.		
d.		



**G. KEY PERSONNEL PARTICIPATION IN EXAMPLE PROJECTS**

26. NAMES OF KEY PERSONNEL (From Section E, Block 12)	27. ROLE IN THIS CONTRACT (From Section E, Block 13)	28. EXAMPLE PROJECTS LISTED IN SECTION F (Fill in "Example Projects Key" section below before completing table. Place "X" under project key number for participation in same or similar role.)										
		1	2	3	4	5	6	7	8	9	10	
Dennis J. Giordano	Principal in Charge	X	X	X	X	X	X	X	X	X	X	X
Jenna Martinetti, PE	Project Manager	X	X	X		X	X	X	X			
Tammy Cook, RLA, LEED AP	Landscape Architecture	X	X	X	X	X	X	X	X			
Sandra Lee, LEED AP	Environmental, Grants	X	X	X	X	X	X					
Mohammed Sharifuzzaman, PE	Drainage					X		X	X			X
Adam Heltemes, PE	Drainage							X	X			X
Jon Cooper	QA/QC	X	X	X	X	X	X	X	X	X	X	X
Bob McSweeney, PE	QA/QC, Construction Services				X	X	X	X	X	X	X	X
Greg Clements, PSM	Surveyor	X				X		X	X			

**26. EXAMPLE PROJECTS KEY**

NO.	TITLE OF EXAMPLE PROJECT (FROM SECTION F)	NO.	TITLE OF EXAMPLE PROJECT (FROM SECTION F)
1	DANIA COVE PARK	6	HALLANDALE BEACH NE QUADRANT DRAINAGE BASIN STUDY & IMPLEMENTATION
2	DANIA COVE PARK SHORELINE STABILIZATION	7	LLOYD ESTATES
3	DANIA COVE PARK - PARK SIGNS	8	SURFSIDE UTILITY PROJECT
4	WETLAND MITIGATION COMPLIANCE MONITORING AND REPORTING	9	WESTON DRAINAGE
5	BASIN 5 DRAINAGE IMPROVMENTS	10	OAKLAND PARK BID PACK 9 PROJECT AREA INFRASTRUCTURE IMPROVEMENTS

H. ADDITIONAL INFORMATION

30. PROVIDE ANY ADDITIONAL INFORMATION REQUESTED BY THE AGENCY. ATTACH ADDITIONAL SHEETS AS NEEDED.

12. AUTHORIZED REPRESENTATIVE

The foregoing is a statement of facts.

a. SIGNATURE



b. DATE

**MARCH 21, 2014**

c. NAME AND TITLE

**DENNIS J. GIORDANO, PRESIDENT**

<b>ARCHITECT-ENGINEER QUALIFICATIONS</b>	1. SOLICITATION NUMBER (If any) <b>RFQ 246-11389</b>
--	---

**PART II - GENERAL QUALIFICATIONS**

*(If a firm has branch offices, complete for each specific branch office seeking work.)*


2a. FIRM (OR BRANCH OFFICE) NAME <b>CALVIN, GIORDANO &amp; ASSOCIATES, INC.</b>			3. YEAR ESTABLISHED <b>1937</b>	4. DUNS NUMBER <b>FEIN 65-0013869</b>
2b. STREET <b>1800 ELLER DRIVE, SUITE 600</b>			5. OWNERSHIP TYPE <b>CORPORATION</b>	
2c. CITY <b>FORT LAUDERDALE</b>	2d. STATE <b>FL</b>	2e. ZIP CODE <b>33316</b>	a. SMALL BUSINESS STATUS	
6a. POINT OF CONTACT NAME AND TITLE <b>DENNIS J. GIORDANO, PRESIDENT</b>			7. NAME OF FIRM <i>(If block 2a is a branch office)</i>	
6b. TELEPHONE NUMBER <b>(954) 921-7781</b>	6c. E-MAIL ADDRESS <b>DGIORDANO@CGASOLUTIONS.COM</b>			
8a. FORMER FIRM NAME(S) <i>(If any)</i> <b>M.E. BERRY &amp; ASSOCIATES / BERRY &amp; CALVIN, INC.</b>			8b. YR. ESTABLISHED <b>1937 / 1985</b>	8c. DUNS NUMBER <b>044297369</b>

9. EMPLOYEES BY DISCIPLINE				10. PROFILE OF FIRM'S EXPERIENCE AND ANNUAL AVERAGE REVENUE FOR LAST 5 YEARS		
a. Function Code	b. Discipline	c. No. of Employees		a. Profile Code	b. Experience	c. Revenue Index Number <i>(see below)</i>
		(1) FIRM	(2) BRANCH			
02	Administrative	79			Codes; Standards, Ordinances	1
10	Chemical Engineers	1			Construction Management	4
12	Civil Engineers	20			Cost Estimating	4
15	Construction Inspector	20			Educational Facilities	3
21	Electrical Engineers	2			Environmental Impact Studies, Assessments or Statements	4
39	Landscape Architects	4			Highways; Streets; Airfield Paving; Parking Lots	4
47	Planners: Urban/Regional	8			Hospital & Medical Facilities	4
52	Sanitary Engineers				Irrigation; Drainage	6
	Permitting Specialists	18			Landscape Architecture	4
38	Surveyors	5			Office Building; Industrial Parks	3
60	Transportation Engineers	3			Planning (Community, Regional Area-wide & State)	4
08	Computer CADD Technicians	4			Planning (Site, Installation, and Project)	7
38	Field Surveyors	10			Sewage Collection, Treatment and Disposal	4
29	GIS/Data Technology Specialists	7			Surveying; Platting; Mapping; Flood Plain Studies	8
	Code Enforcement Specialist	18			Storm Water Handling & Facilities	6
24	Environmental Specialists	1			Traffic & Transportation Engineering	3
24	Environmental Field Crew	1			Urban Renewals; Community Development	4
39	Landscape Designers / Inspectors	4			Water Supply; Treatment and Distribution	8
07	Biologist(s)/Indoor Air Quality	1			Zoning; Land Use Studies	3
	<b>Other Employees</b>	102				
<b>Total</b>		308				

11. ANNUAL AVERAGE PROFESSIONAL SERVICES REVENUES OF FIRM FOR LAST 3 YEARS <i>(Insert revenue index number shown at right)</i>		PROFESSIONAL SERVICES REVENUE INDEX NUMBER			
a. Federal Work	0	1. Less than \$100,000	6. \$2 million to less than \$5 mil	7. \$5 million to less than \$10 mil	8. \$10 million to less than \$25 mil
b. Non-Federal Work	8	2. \$100,000 to less than \$250,000	7. \$5 million to less than \$10 mil	8. \$10 million to less than \$25 mil	9. \$25 million to less than \$50 mil
c. Total Work	8	3. \$250,000 to less than \$500,000	8. \$10 million to less than \$25 mil	9. \$25 million to less than \$50 mil	10. \$50 million or greater
		4. \$500,000 to less than \$1 mil	9. \$25 million to less than \$50 mil	10. \$50 million or greater	
		5. \$1 million to less than \$2 mil	10. \$50 million or greater		

**12. AUTHORIZED REPRESENTATIVE**

The foregoing is a statement of facts.

a. SIGNATURE 	b. DATE <b>MARCH 21, 2014</b>
c. NAME AND TITLE <b>DENNIS J. GIORDANO, PRESIDENT</b>	



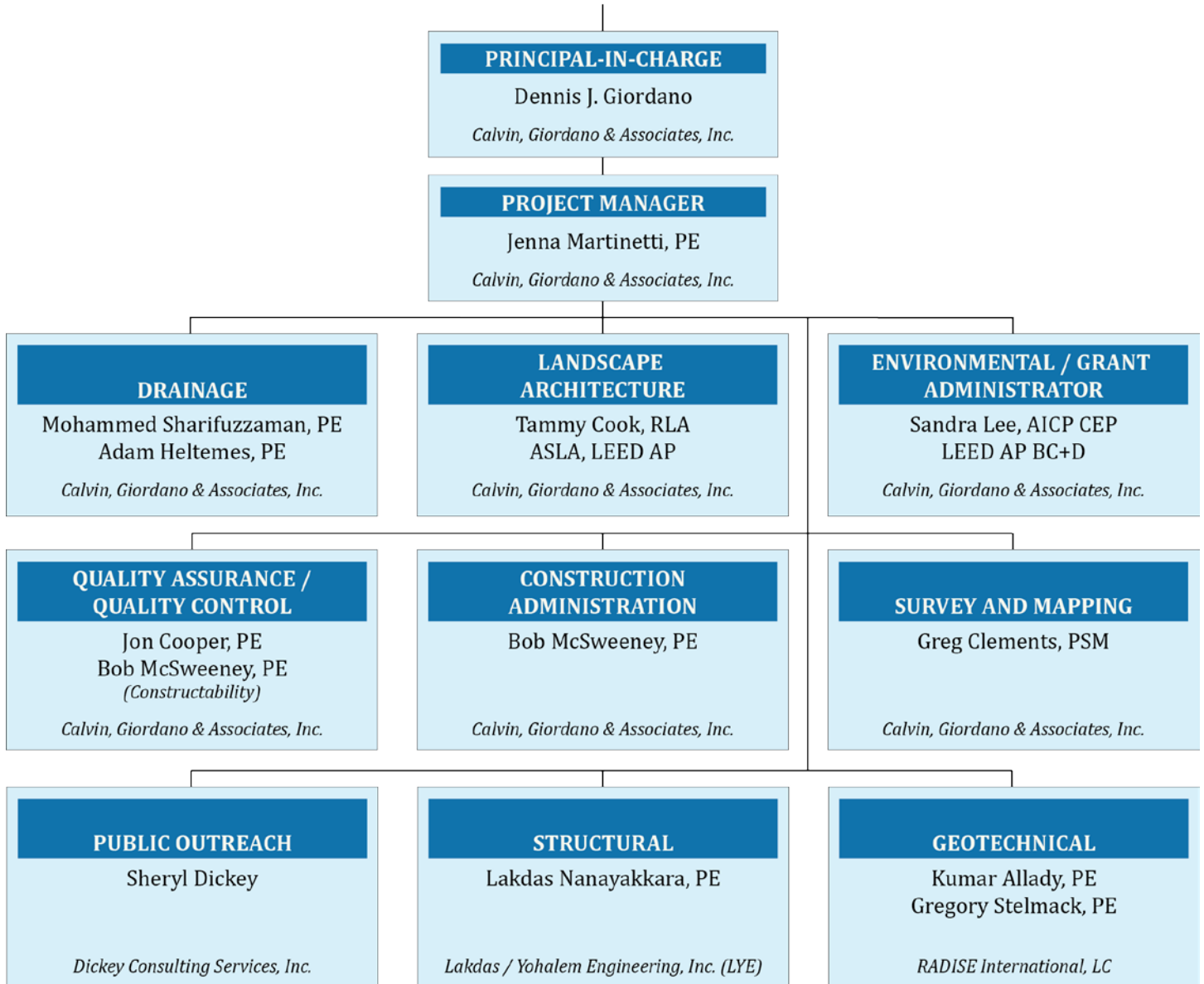
## SECTION 4 QUALIFICATIONS OF THE PROJECT TEAM

Standard Form 330 resumes are provided on the following pages.



**D. ORGANIZATIONAL CHART**

**CITY OF  
FORT LAUDERDALE**



**E. RESUMES OF KEY PERSONNEL PROPOSED FOR THIS CONTRACT**

*(Complete one Section E for each key person.)*

12. NAME <b>JENNA MARTINETTI, PE</b>	13. ROLE IN THIS CONTRACT <b>PROJECT MANAGER</b>	14. YEARS EXPERIENCE	
		a. TOTAL <b>10</b>	b. WITH CURRENT FIRM <b>10</b>
15. FIRM NAME AND LOCATION (City and State) <b>CALVIN, GIORDANO &amp; ASSOCIATES, INC. - FORT LAUDERDALE, FL</b>			
16. EDUCATION (DEGREE AND SPECIALIZATION) <b>* B.S., Civil Engineering, Florida State University Magna Cum Laude</b>		17. CURRENT PROFESSIONAL REGISTRATION (STATE AND DISCIPLINE) <b>Florida PE, No. 69035</b>	
18. OTHER PROFESSIONAL QUALIFICATIONS (Publications, Organizations, Training, Awards, etc.)			

Ms. Martinetti has ten years of engineering experience and has worked on projects from inception to project close out including supporting documents and coordination between all involved parties. Ms. Martinetti's project manager experience includes water, sewer and stormwater infrastructure projects, neighborhood improvement projects and site development. Her highway design experience includes design for milling and resurfacing, widening, reconstruction, safety improvement projects, ADA upgrades and compliance, drainage improvements, signing and pavement markings, traffic control plans, and storm water pollution prevention control plans. Her experience also includes utility coordination, participation in the quality control process, electronic delivery, local agency program (LAP) coordination, and grant writing assistance and supporting documents.

**19. RELEVANT PROJECTS**

	(1) TITLE AND LOCATION (City and State)	(2) YEAR COMPLETED	
		PROFESSIONAL SERVICES	CONSTRUCTION (if applicable)
a.	<b>Dania Cove Park Improvements Dania Beach, Florida</b>	2010-2012	
	(3) BRIEF DESCRIPTION (Brief scope, size, cost, etc.) AND SPECIFIC ROLE <input checked="" type="checkbox"/> Check if project performed with current firm Project manager for the design and installation of a pedestrian pathway, 2 picnic pavilions, benches, picnic tables, educational signage, and trash receptacles for Dania Cove, aka Fuzzy Bunny Park, in Dania Beach. The city needed design, permitting and construction completed in 13 months in order to meet the deadline for two separate grants funding the project. The project also included shoreline restoration using sheet pile wall, environmental and storm water permitting, site grading, grant administration, and landscaping improvements. The project was completed in time for the City to receive the entire grant funding available for reimbursement.		
b.	<b>Hallandale Beach NE Quadrant Drainage Improvements Hallandale Beach, Florida</b>	2009-2012	
	(3) BRIEF DESCRIPTION (Brief scope, size, cost, etc.) AND SPECIFIC ROLE <input checked="" type="checkbox"/> Check if project performed with current firm Project Manager for the rehabilitation of the drainage system within the City of Hallandale Beach's NE Quadrant neighborhood. The project includes modifications and additions to the existing collection system, the installation of two new pumping stations, storm water force mains and injection wells, and relocation of existing utilities in conflict. The sixteen new wells will be pressurized with fifteen (15) feet of head in order to produce the necessary discharge into the G3 aquifer. FDEP and the Broward County Environmental Resource Department and FDEP have permitted the project. Permitting, bidding and award, engineering during construction, construction services and project close out are also included. This project is funded entirely by FEMA HMGP grant funds. A modification to the original grant was obtained to allow for an additional neighborhood within the City to be included in the grant funding.		
c.	<b>Dania Beach Basin 5 Drainage Project Dania Beach, Florida</b>	2009-2014	
	(3) BRIEF DESCRIPTION (Brief scope, size, cost, etc.) AND SPECIFIC ROLE <input checked="" type="checkbox"/> Check if project performed with current firm Project manager for the design and permitting of the SE neighborhood improvements for in the City of Dania Beach. The proposed drainage improvements consist of three duplex pump stations, more than 20,000 linear feet of higher capacity storm sewer to improve storm water conveyance, more efficient discharge outfall systems and exfiltration trenches to improve area water quality. The project's eastern limits, and pump discharge locations, border the County's West Lake Park therefore a bioswale was permitted to receive, treat and release stormwater which will sheetflow into the park and benefit the salt water marsh's ecosystem.		
d.	<b>SR 820/Pines Boulevard at the I-75 Interchange Urbanization and Ramp Realignment (LAP), Broward County, Florida</b>	2006-2011	
	(3) BRIEF DESCRIPTION (Brief scope, size, cost, etc.) AND SPECIFIC ROLE <input checked="" type="checkbox"/> Check if project performed with current firm Signing and pavement marking design for the reconfiguration of the I-75 interchange at Pines Boulevard/SR 820 including new ramp alignment, design of cantilever signs, and new signalized intersections. Prepared signing and pavement marking plans, cost estimate, participated in QA/QC process for roadway and signalization plans, and post-design services.		

**E. RESUMES OF KEY PERSONNEL PROPOSED FOR THIS CONTRACT**

*(Complete one Section E for each key person.)*

12. NAME <b>MOHAMMED SHARIFUZZAMAN, PE</b>	13. ROLE IN THIS CONTRACT <b>DRAINAGE</b>	14. YEARS EXPERIENCE	
		a. TOTAL <b>11</b>	b. WITH CURRENT FIRM <b>2</b>
15. FIRM NAME AND LOCATION (City and State) <b>CALVIN, GIORDANO &amp; ASSOCIATES, INC. - FORT LAUDERDALE, FL</b>			
16. EDUCATION (DEGREE AND SPECIALIZATION) * <b>M.E., Civil Eng., Lamar University, Beaumont, TX, 2000</b> * <b>B.S., Civil Engineering, Bangladesh University of Engineering &amp; Technology, Bangladesh, 1997</b>		17. CURRENT PROFESSIONAL REGISTRATION (STATE AND DISCIPLINE) <b>PE, State of Florida, No. 67640</b>	

18. OTHER PROFESSIONAL QUALIFICATIONS *(Publications, Organizations, Training, Awards, etc.)*

Mr. Sharifuzzaman has more than 10 years of professional experience in civil, environmental, and transportation engineering with specialization in hydraulics and hydrologic modeling (H&H), surface water management system design, drainage basin/watershed modeling and floodplain analysis, master drainage study, conceptual/master surface water management system design, stormwater pump station design, stormwater retrofit projects, nutrient loading analysis (TMDL calculations), Stormwater Treatment Area (STA) design, FDOT roadway drainage design, and bridge hydraulics. His extensive experience includes land development projects including commercial/residential/institutional/DRI projects, roadway projects including new construction, widening and reconstruction, RRR and safety improvement projects, and PD&E study. Mr. Sharifuzzaman has worked extensively with permitting agencies including the South Florida Water Management District (SFWMD), the Florida Department of Environmental Protection (FDEP), the Florida Department of Transportation (FDOT), U.S. Army Corps of Engineers (USACE), various municipalities, and counties. His trusted reputation with the permitting agencies has produced a long list of successful and profitable projects. His extensive experience with construction, and thorough knowledge of codes and regulations as they apply to each development, is an asset for any project.

As a project manager of the engineering division at CGA, he serves as a single point of contact for clients, and is fully responsible for project activities and objectives. He reports the teams' progress, workloads, costs and schedule status, as well as any potential deviations from the project milestones, and allocates the multi-disciplinary resources to meet the deliverables. To further assure success of the projects, he provides maximum production and continuity through superior communication.

**19. RELEVANT PROJECTS**

a.	(1) TITLE AND LOCATION <i>(City and State)</i> <b>Weston Drainage Improvements Project City of Weston, Florida</b>	(2) YEAR COMPLETED	
		PROFESSIONAL SERVICES <b>2014</b>	CONSTRUCTION <i>(if applicable)</i>
	(3) BRIEF DESCRIPTION <i>(Brief scope, size, cost, etc.)</i> AND SPECIFIC ROLE Watershed modeling of Bonaventure Development District and Indian Trace Development District seeking FEMA grant, and determination of most feasible and optimum drainage improvements to minimize the potential for future flooding.	<input type="checkbox"/> Check if project performed with current firm	
b.	(1) TITLE AND LOCATION <i>(City and State)</i> <b>Flamingo Gardens Master Drainage Study Cooper City, Florida</b>	(2) YEAR COMPLETED	
		PROFESSIONAL SERVICES <b>2014</b>	CONSTRUCTION <i>(if applicable)</i>
	(3) BRIEF DESCRIPTION <i>(Brief scope, size, cost, etc.)</i> AND SPECIFIC ROLE Modeling of 135-acre Flamingo Gardens Master Drainage Basin to determine the potential cause of neighborhood flooding and determination of the most feasible drainage improvements to minimize future flooding.	<input type="checkbox"/> Check if project performed with current firm	
c.	(1) TITLE AND LOCATION <i>(City and State)</i> <b>Bid Pack No. 9 Infrastructure Improvements Project City of Oakland Park</b>	(2) YEAR COMPLETED	
		PROFESSIONAL SERVICES <b>2013</b>	CONSTRUCTION <i>(if applicable)</i>
	(3) BRIEF DESCRIPTION <i>(Brief scope, size, cost, etc.)</i> AND SPECIFIC ROLE Cherry Creek watershed modeling, design and permitting for proposed drainage improvements within the coral lakes subdivision of the City of Oakland Park.	<input type="checkbox"/> Check if project performed with current firm	
d.	(1) TITLE AND LOCATION <i>(City and State)</i> <b>SW/SE Quadrant Drainage Improvements Project City of Hallandale Beach</b>	(2) YEAR COMPLETED	
		PROFESSIONAL SERVICES <b>2013</b>	CONSTRUCTION <i>(if applicable)</i>
	(3) BRIEF DESCRIPTION <i>(Brief scope, size, cost, etc.)</i> AND SPECIFIC ROLE Schaffer canal drainage basin/Watershed modeling, design and permitting of innovative surface water management systems consisting of pump stations and pressurized injection wells.	<input type="checkbox"/> Check if project performed with current firm	
e.	(1) TITLE AND LOCATION <i>(City and State)</i> <b>Lloyd Estates Drainage Study City of Oakland Park, Florida</b>	(2) YEAR COMPLETED	
		PROFESSIONAL SERVICES <b>2012</b>	CONSTRUCTION <i>(if applicable)</i>
	(3) BRIEF DESCRIPTION <i>(Brief scope, size, cost, etc.)</i> AND SPECIFIC ROLE H&H study for the Lloyd Estates drainage basin seeking FEMA grants, conceptual design for a pump station across Sleepy River discharging into the SFWMD C-13 canal.	<input type="checkbox"/> Check if project performed with current firm	

**E. RESUMES OF KEY PERSONNEL PROPOSED FOR THIS CONTRACT**

*(Complete one Section E for each key person.)*

12. NAME <b>ADAM HELTEMES, PE</b>	13. ROLE IN THIS CONTRACT <b>DRAINAGE</b>	14. YEARS EXPERIENCE	
		a. TOTAL <b>14</b>	b. WITH CURRENT FIRM <b>1</b>
15. FIRM NAME AND LOCATION (City and State) <b>CALVIN, GIORDANO &amp; ASSOCIATES, INC. - FORT LAUDERDALE, FL</b>			
16. EDUCATION (DEGREE AND SPECIALIZATION) * <b>B.S., Agricultural and Biological Engineering (Soil and Water Conservation Engineering Specialization), UF</b> * <b>A.S. Environmental Science Technology Santa Fe State College, Gainesville, Florida</b>		17. CURRENT PROFESSIONAL REGISTRATION (STATE AND DISCIPLINE) <b>PE, State of Florida, No. 59353</b>	

18. OTHER PROFESSIONAL QUALIFICATIONS *(Publications, Organizations, Training, Awards, etc.)*

Mr. Heltemes is a Project Manager with 14 years of experience in engineering design and project development for urban watershed studies, stormwater pump stations, environmental resource permitting, wetland enhancement designs, groundwater well studies and consumptive use permitting, roadway hydraulic design, civil site design and utility coordination, construction observation and certification experience, water and sewer infrastructure layout and design, sanitary sewer lift and grinder stations, sand and limerock pit designs, and construction and debris landfill stormwater design and permitting.

**19. RELEVANT PROJECTS**

a.	(1) TITLE AND LOCATION <i>(City and State)</i> <b>Cutting Edge Self Storage St. Lucie County, Florida</b>	(2) YEAR COMPLETED	
		PROFESSIONAL SERVICES <b>2004</b>	CONSTRUCTION <i>(if applicable)</i>
	(3) BRIEF DESCRIPTION <i>(Brief scope, size, cost, etc.)</i> AND SPECIFIC ROLE <input type="checkbox"/> Check if project performed with current firm Design and permitting of a self-storage facility including the installation of a surface water management system, potable water and sanitary sewer connections along with associated site work and permitting.		
b.	(1) TITLE AND LOCATION <i>(City and State)</i> <b>Waterview Condominium Complex Fort Pierce, Florida</b>	(2) YEAR COMPLETED	
		PROFESSIONAL SERVICES <b>2004</b>	CONSTRUCTION <i>(if applicable)</i>
	(3) BRIEF DESCRIPTION <i>(Brief scope, size, cost, etc.)</i> AND SPECIFIC ROLE <input type="checkbox"/> Check if project performed with current firm Engineering design and permitting of a residential building located partially within the coastal construction line on South Hutchinson Island. Design includes the installation of a surface water management system, potable water and sanitary sewer connections and associated site work.		
c.	(1) TITLE AND LOCATION <i>(City and State)</i> <b>Harbor Federal Bank Port St. Lucie, Florida</b>	(2) YEAR COMPLETED	
		PROFESSIONAL SERVICES <b>2003</b>	CONSTRUCTION <i>(if applicable)</i>
	(3) BRIEF DESCRIPTION <i>(Brief scope, size, cost, etc.)</i> AND SPECIFIC ROLE <input type="checkbox"/> Check if project performed with current firm Design and permitting of a commercial facility including the installation of a surface water management system, potable water and sanitary sewer connections and associated site work and construction observation and certification.		
d.	(1) TITLE AND LOCATION <i>(City and State)</i> <b>Carlton Square St. Lucie County, Florida</b>	(2) YEAR COMPLETED	
		PROFESSIONAL SERVICES <b>2010</b>	CONSTRUCTION <i>(if applicable)</i>
	(3) BRIEF DESCRIPTION <i>(Brief scope, size, cost, etc.)</i> AND SPECIFIC ROLE <input type="checkbox"/> Check if project performed with current firm Design, permitting and planning and zoning submittals for a 20,000 SF commercial facility including the installation and retrofit of a surface water management system, potable water and fireline design, septic sewer and drainfield design along with associated site work and construction observation services.		
e.	(1) TITLE AND LOCATION <i>(City and State)</i> <b>A1A (Seaway and South Ocean Drive) Fort Pierce, Florida</b>	(2) YEAR COMPLETED	
		PROFESSIONAL SERVICES <b>2005</b>	CONSTRUCTION <i>(if applicable)</i>
	(3) BRIEF DESCRIPTION <i>(Brief scope, size, cost, etc.)</i> AND SPECIFIC ROLE <input type="checkbox"/> Check if project performed with current firm Designed the expansion and drainage retrofit design of approximately five miles of two-lane roadway. Surface water management system design included exfiltration trench, dry and wet detention systems and curb and gutter with ultimate discharge to the Fort Pierce Inlet.		



**E. RESUMES OF KEY PERSONNEL PROPOSED FOR THIS CONTRACT**

*(Complete one Section E for each key person.)*

12. NAME <b>TAMMY COOK, ASLA, RLA, LEED AP</b>	13. ROLE IN THIS CONTRACT <b>LANDSCAPE ARCHITECTURE</b>	14. YEARS EXPERIENCE	
		a. TOTAL <b>24</b>	b. WITH CURRENT FIRM <b>16</b>
15. FIRM NAME AND LOCATION <i>(City and State)</i> <b>CALVIN, GIORDANO &amp; ASSOCIATES, INC. - FORT LAUDERDALE, FL</b>			
16. EDUCATION <i>(DEGREE AND SPECIALIZATION)</i> <b>* B.S. Landscape Architecture, Texas A&amp;M University, College Station</b>		17. CURRENT PROFESSIONAL REGISTRATION <i>(STATE AND DISCIPLINE)</i> <b>Registered Professional Landscape Architect, Florida No. 0001328</b>	
18. OTHER PROFESSIONAL QUALIFICATIONS <i>(Publications, Organizations, Training, Awards, etc.)</i>			

Ms. Cook leads the Landscape Architectural staff, founded on her 24 years of Landscape Architectural experience with demonstrated strengths in creative design, graphic presentations, and planting design. She has successfully completed numerous large scale projects which encompassed design studies, planting designs, and the various intersecting professions and tasks necessary to manage the projects through to completion.

**19. RELEVANT PROJECTS**

a.	(1) TITLE AND LOCATION <i>(City and State)</i> <b>Hickory Point Recreational Facilities Tavares, FL</b>	(2) YEAR COMPLETED	
		PROFESSIONAL SERVICES <b>1992</b>	CONSTRUCTION <i>(if applicable)</i>
(3) BRIEF DESCRIPTION <i>(Brief scope, size, cost, etc.)</i> AND SPECIFIC ROLE		<input type="checkbox"/> Check if project performed with current firm	
Landscape Architect – The project consisted of the site design of a waterfront park that included marinas, boat ramps, wetland educational boardwalks, environmental signage, fishing stations and a communal pavilion.			
b.	(1) TITLE AND LOCATION <i>(City and State)</i> <b>Joe DiMaggio Children’s Hospital Visitor’s Clubhouse Hollywood, FL</b>	(2) YEAR COMPLETED	
		PROFESSIONAL SERVICES <b>2011</b>	CONSTRUCTION <i>(if applicable)</i>
(3) BRIEF DESCRIPTION <i>(Brief scope, size, cost, etc.)</i> AND SPECIFIC ROLE		<input checked="" type="checkbox"/> Check if project performed with current firm	
Landscape Architect/Project Manager – Prepared the site and landscape design for a restorative garden with a playground area specifically for the use by children users of the Joe DiMaggio facility.			
c.	(1) TITLE AND LOCATION <i>(City and State)</i> <b>Gator Run Park Weston, FL</b>	(2) YEAR COMPLETED	
		PROFESSIONAL SERVICES <b>2002</b>	CONSTRUCTION <i>(if applicable)</i>
(3) BRIEF DESCRIPTION <i>(Brief scope, size, cost, etc.)</i> AND SPECIFIC ROLE		<input checked="" type="checkbox"/> Check if project performed with current firm	
<b>Project Manager</b> – Passive park design for a 5-acre community park including lighting improvements, continuous walking paths, children’s play equipment, planting and irrigation design. The design provided a butterfly garden and shade structures in proximity to and to build strong connections with the adjacent elementary school			
d.	(1) TITLE AND LOCATION <i>(City and State)</i> <b>Deering Estate at Old Cutler Palmetto Bay, FL</b>	(2) YEAR COMPLETED	
		PROFESSIONAL SERVICES <b>2003</b>	CONSTRUCTION <i>(if applicable)</i>
(3) BRIEF DESCRIPTION <i>(Brief scope, size, cost, etc.)</i> AND SPECIFIC ROLE		<input checked="" type="checkbox"/> Check if project performed with current firm	
Historical restoration and landscape design to repair the damaged areas of the estate following Hurricane Andrews devastation of the property, including detailed archeological planting design, habitat restoration and planting design for a new visitors’ facility.			
e.	(1) TITLE AND LOCATION <i>(City and State)</i> <b>Sombrero Beach Park Marathon, FL</b>	(2) YEAR COMPLETED	
		PROFESSIONAL SERVICES <b>2003</b>	CONSTRUCTION <i>(if applicable)</i>
(3) BRIEF DESCRIPTION <i>(Brief scope, size, cost, etc.)</i> AND SPECIFIC ROLE		<input checked="" type="checkbox"/> Check if project performed with current firm	
Landscape Architect – Park master plan and design for the creation of a beachfront park with dune access, volleyball courts, playgrounds, beach amenities, dune and turtle nesting habitat restoration.			
f.	(1) TITLE AND LOCATION <i>(City and State)</i> <b>Eagle Point Park Weston, FL</b>	(2) YEAR COMPLETED	
		PROFESSIONAL SERVICES <b>2003</b>	CONSTRUCTION <i>(if applicable)</i>
(3) BRIEF DESCRIPTION <i>(Brief scope, size, cost, etc.)</i> AND SPECIFIC ROLE		<input checked="" type="checkbox"/> Check if project performed with current firm	
Passive park design for a 4-acre community park including lighting improvements, continuous walking paths, children’s play equipment, planting and irrigation design.			

**E. RESUMES OF KEY PERSONNEL PROPOSED FOR THIS CONTRACT**

*(Complete one Section E for each key person.)*

12. NAME <b>SANDRA LEE, AICP CEP LEED AP BD+C</b>	13. ROLE IN THIS CONTRACT <b>ENVIRONMENTAL / GRANT ADMINISTRATOR</b>	14. YEARS EXPERIENCE	
		a. TOTAL <b>20</b>	b. WITH CURRENT FIRM <b>13.5</b>
15. FIRM NAME AND LOCATION (City and State) <b>CALVIN, GIORDANO &amp; ASSOCIATES, INC. - FORT LAUDERDALE, FL</b>			
16. EDUCATION (DEGREE AND SPECIALIZATION) * <b>M.A. Biology/Ecology, Magna Cum Laude, St. Cloud State University, Minnesota</b> * <b>B.A. Biology/Botany, Magna Cum Laude, St. Cloud State University, Minnesota</b>		17. CURRENT PROFESSIONAL REGISTRATION (STATE AND DISCIPLINE) <b>AICP CEP No. 018627</b> <b>LEED A.P. BD+C NO. 10215598</b>	

18. OTHER PROFESSIONAL QUALIFICATIONS (Publications, Organizations, Training, Awards, etc.)

Ms. Lee has over 20 years of professional experience and heads up CGA's Environmental Planning Department coordinating regulatory permitting, environmental planning, site assessment, resource management and environmental technical support services. In general, Ms. Lee: provides permitting services for environmental resources permits at the local, state and federal level, coordinates interagency and multi-disciplinary team efforts, provides the most feasible development and mitigation options, and the probable costs for mitigation options, provides tree mitigation plans and tree removal permitting services, conducts wetland delineations and wetland functional assessments, prepares Coastal and Conservation Elements for Comprehensive plans, coordinates on Comprehensive Plan Evaluation and Appraisal Reports (EAR) and EAR based amendments, designs wetland mitigation areas, provides bidding and construction oversight services for the construction and installation of mitigation areas, provides technical support, environmental resource management and environmental planning services to municipalities, manages the compliance monitoring on over 2,000 acres of constructed wetlands and administers the maintenance contract on over 2,000 acres of created and enhanced wetlands, manages field staff conducting wildlife and habitat assessments, imperiled species surveys and compliance monitoring reporting.

**19. RELEVANT PROJECTS**

(1) TITLE AND LOCATION (City and State)	(2) YEAR COMPLETED	
	PROFESSIONAL SERVICES	CONSTRUCTION (if applicable)
<b>Dania Cove Park Dania Beach, Florida</b>	2011	2012
(3) BRIEF DESCRIPTION (Brief scope, size, cost, etc.) AND SPECIFIC ROLE	<input checked="" type="checkbox"/> Check if project performed with current firm	
a. CGA developed a waterfront park design on an archeologically significant site in the City of Dania Beach; the site, containing a scenic mangrove cove, is located along the Dania Cut-off canal. The park design included a fishing dock and platform, picnic pavilions and an exercise path. Native plantings were used to eliminate the park's need for permanent irrigation, and plants were selected for their educational opportunities including highlighting the butterfly attracting varieties. The scope included designing a stabilization system for a badly eroded and unstable shoreline embankment along with vegetating the shoreline; designing informational kiosks featuring the historic Native American midden and the site's natural resources; and obtaining all required permits for the installation of the site features. The scope also included coordinating with the County and State on gaining approval for the site design, tracking all expenditures and processing and obtaining all grant funds for the City, from the State and County and closing out the grants and permits.		
(1) TITLE AND LOCATION (City and State)	(2) YEAR COMPLETED	
<b>Dania Beach Basin 5 Dania Beach, Florida</b>	2007	Ongoing
(3) BRIEF DESCRIPTION (Brief scope, size, cost, etc.) AND SPECIFIC ROLE	<input checked="" type="checkbox"/> Check if project performed with current firm	
b. CGA has designed this unique stormwater improvement system to benefit both the developed and adjacent natural habitats. CGA has conducted all the site and wetland functional assessments for permitting and has processed permits through the ACOE, the South Florida Water Management District and Broward County. Permitting required extensive negotiation with various Divisions of Broward County including the development of an Agreement with the County and City for use of the County land, and approval by the County Commission. The construction of the Bio-swale did require unavoidable impacts to wetlands; however, the design plan within the swale included removal of all exotic vegetation, excavation of marginal wetland habitat with revegetation, and increased hydrology to low quality wetlands thereby creating enhancements with a greater functional gain than the functional loss through the impacts. Construction costs \$5.4 million.		
(1) TITLE AND LOCATION (City and State)	(2) YEAR COMPLETED	
<b>Blessed John XXIII Miramar, FL</b>	2009	2012
(3) BRIEF DESCRIPTION (Brief scope, size, cost, etc.) AND SPECIFIC ROLE	<input checked="" type="checkbox"/> Check if project performed with current firm	
c. CGA was responsible for Environmental Permitting, which included the site assessments, wetland assessments and obtaining a COE, a Broward County and two South Florida Water Management District permits for the development site and the newly constructed off-site mitigation area. CGA designed the newly constructed off-site mitigation area, conducted the construction oversight and long term compliance monitoring and maintenance oversight for the new off-site mitigation area. Project costs are at \$4.8 million.		

**E. RESUMES OF KEY PERSONNEL PROPOSED FOR THIS CONTRACT**

*(Complete one Section E for each key person.)*

12. NAME <b>JON COOPER, PE</b>	13. ROLE IN THIS CONTRACT <b>QUALITY ASSURANCE/ QUALITY CONTROL (QA/QC)</b>	14. YEARS EXPERIENCE	
		a. TOTAL <b>26</b>	b. WITH CURRENT FIRM <b>7</b>
15. FIRM NAME AND LOCATION <i>(City and State)</i> <b>CALVIN, GIORDANO &amp; ASSOCIATES, INC. - FORT LAUDERDALE, FL</b>			
16. EDUCATION <i>(DEGREE AND SPECIALIZATION)</i> <b>* BS, Civil Engineering, University of South Florida, 1988</b>		17. CURRENT PROFESSIONAL REGISTRATION <i>(STATE AND DISCIPLINE)</i> <b>PE, Florida, No. 45840 PE, Tennessee, No. 110468 PE, Georgia, No. 064265</b>	
18. OTHER PROFESSIONAL QUALIFICATIONS <i>(Publications, Organizations, Training, Awards, etc.)</i>			

Mr. Cooper serves as CGA's senior quality assurance professional. His primary role within the firm is to assemble a team of professionals that collaborate with a project design team to assure quality in all of our designs and work products. Mr. Cooper following steps into the planning, design and construction projects being performed by CGA;

- Initial Quality of Design Requirement
- Implement Multi discipline Peer Review
- Design Decision Documentation
- Constructibility Review
- Value Engineering
- Conformance to Schedule and Budget

Mr. Cooper has 20 years of experience in civil and environmental engineering with specialization in utilities infrastructure and land development. He is skilled in the design of civil engineering projects, including water and wastewater treatment plants, water mains, wastewater force mains, reuse application systems as well as large and small land development projects. He also has expertise in hydraulic computer modeling of force main and water main piping network systems, and has expertise in hydraulic analysis and unit operations design associated with water and wastewater treatment plants. Mr. Cooper also has proficiency in surface water hydraulic models, including watershed and hydraulic conductivity analysis. Mr. Cooper has worked extensively with permitting agencies including various municipalities, county planning, environmental and health protection departments, Florida Department of Environmental Protection, Water Management Districts and the Florida Department of Transportation. He also brings construction management expertise to all projects assuring a high level of client satisfaction and quality control.

**19. RELEVANT PROJECTS**

	(1) TITLE AND LOCATION <i>(City and State)</i>	(2) YEAR COMPLETED	
		PROFESSIONAL SERVICES	CONSTRUCTION <i>(if applicable)</i>
a.	<b>Foxcroft Development Miramar, Florida</b>	2009	2013
	(3) BRIEF DESCRIPTION <i>(Brief scope, size, cost, etc.)</i> AND SPECIFIC ROLE <input checked="" type="checkbox"/> Check if project performed with current firm Mr. Cooper supervised the drainage analysis for this multi-family, multi-use development including basin modeling and conveyance systems.		
b.	<b>Raintree Golfcourse Redevelopment Pembroke Pines, Florida</b>	2009	Present
	(3) BRIEF DESCRIPTION <i>(Brief scope, size, cost, etc.)</i> AND SPECIFIC ROLE <input checked="" type="checkbox"/> Check if project performed with current firm Mr. Cooper supervised the drainage analysis of the conversion of golf course to environmental wetland, public works and multi-family development.		
c.	<b>Surfside Infrastructure Improvements Surfside, Florida</b>	2008	2013
	(3) BRIEF DESCRIPTION <i>(Brief scope, size, cost, etc.)</i> AND SPECIFIC ROLE <input checked="" type="checkbox"/> Check if project performed with current firm Mr. Cooper served as Project Quality Control Director for this project including master planning for all surface water drainage, potable water and sewer systems, sewage lift station design, gravity sewer line design and water main design		
d.	<b>Dania Southeast Drainage Pump Station Dania, Florida</b>	2013	Present
	(3) BRIEF DESCRIPTION <i>(Brief scope, size, cost, etc.)</i> AND SPECIFIC ROLE <input checked="" type="checkbox"/> Check if project performed with current firm Mr. Cooper served as Engineer of Record for this stormwater pump station designed to mitigate flooding in low lying areas.		

**E. RESUMES OF KEY PERSONNEL PROPOSED FOR THIS CONTRACT**

*(Complete one Section E for each key person.)*

12. NAME <b>BOB MCSWEENEY, PE</b>	13. ROLE IN THIS CONTRACT <b>CONSTRUCTION ADMIN./ QA/QC</b>	14. YEARS EXPERIENCE	
		a. TOTAL <b>26</b>	B. WITH CURRENT FIRM <b>3</b>
15. FIRM NAME AND LOCATION (City and State) <b>CALVIN, GIORDANO &amp; ASSOCIATES, INC. - FORT LAUDERDALE, FL</b>			
16. EDUCATION (DEGREE AND SPECIALIZATION) <b>* BS Civil Engineering, Florida Institute of Technology, 1986</b>		17. CURRENT PROFESSIONAL REGISTRATION (STATE AND DISCIPLINE) <b>Florida PE No. 47506</b>	
18. OTHER PROFESSIONAL QUALIFICATIONS (Publications, Organizations, Training, Awards, etc.)			

Mr. Robert McSweeney, PE, has more than 20 years of local experience in South Florida including permitting, design, project management, and construction administration. His main focus over the past 12 years has been in project management and construction administration for municipal/governmental and private sector clients. This work has involved large scale FDOT roadway projects, utility and neighborhood improvement projects, and roadway reconstruction/traffic calming for multiple municipalities.

Mr. McSweeney has the experience to serve the City of Ft. Lauderdale having served as a contract and construction administrator for multiple continuing services contracts providing engineering service to municipal clients including the City of Fort Lauderdale, the City of Pompano Beach, the City of Deerfield Beach, and the Town of Surfside. Sample projects included Harbor Beach Neighborhood Improvements and Dolphin Isles Neighborhood Improvements (City of Ft. Lauderdale), 24" reuse water main project (one mile) through a neighborhood in the City of Pompano Beach, a bridge replacement project in the City of Pompano Beach, and utility and roadway improvements in both Deerfield Beach and the Town of Surfside. He understands the necessary efforts of construction activities in neighborhood improvement projects as well as dealing with the public and acting as a liaison to the City, the process of overseeing the performance design engineers as well as contractors, and the efforts required to act as an extension to City staff performing engineering services and construction administration services tasks.

**19. RELEVANT PROJECTS**

	(1) TITLE AND LOCATION (City and State)	(2) YEAR COMPLETED	
		PROFESSIONAL SERVICES	CONSTRUCTION (if applicable)
a.	<b>Town of Surfside Miscellaneous Engineering Services Contract, Project Manager/ Engineer-of-Record</b>	<b>Ongoing</b>	<b>Ongoing</b>
	(3) BRIEF DESCRIPTION (Brief scope, size, cost, etc.) AND SPECIFIC ROLE <input checked="" type="checkbox"/> Check if project performed with current firm Acting Town Engineer / Engineer-of-Record for an ongoing continuing services contract providing general engineering services to the municipality. These services include Commission meeting representation, development plans review and development review meetings, Right-of-Way permit applications reviews, utility coordination, utility franchise agreement coordination, Consent Decree engineering services, and Engineer of Record construction completion certifications. Projects provided under this contract included the \$23M Town-wide utility infrastructure rehabilitation program (water, sewer, drainage, roadway resurfacing and pump stations improvements) and the Biscaya Island Drainage Improvements.		
b.	<b>City of Pompano Beach Miscellaneous Engineering Services Contract, Contract Manager/Engineer-of-Record</b>	<b>2007-2010</b>	<b>2007-2010</b>
	(3) BRIEF DESCRIPTION (Brief scope, size, cost, etc.) AND SPECIFIC ROLE <input type="checkbox"/> Check if project performed with current firm Contract Manager / Engineer-of-Record for a continuing services contract providing general engineering, and surveying and mapping services to the municipality on an as-needed basis. Projects provided under this contract included reclaimed/reuse water main design and construction administration, Pompano Beach Sidewalk Construction Program, facility assessment reporting, municipal pier renovation inspections, Sample McDougald House site design, Broward County/Pompano Beach Branch Library site engineering design, golf course decorative wall design, and bridge and culvert improvements.		
c.	<b>City of Deerfield Beach, FL, Miscellaneous Engineering Services Contract, Contract Manager</b>	<b>2007-2010</b>	<i>CONSTRUCTION (if applicable)</i>
	(3) BRIEF DESCRIPTION (Brief scope, size, cost, etc.) AND SPECIFIC ROLE <input type="checkbox"/> Check if project performed with current firm Contract Manager/Engineer-of-Record of an ongoing continuing services contract providing as needed General Engineering, and Surveying and Mapping services to the municipality. Projects provided under the contract included: <ul style="list-style-type: none"> <li>• A-1-A "S-Curve" Beach Roadway and Beautification Redevelopment</li> <li>• Intersection improvement design of Goolsby and Hillsboro Boulevards</li> <li>• Intersection improvement design of Century and Hillsboro Boulevards</li> <li>• Hillsboro Boulevard CEI Services</li> </ul>		



**E. RESUMES OF KEY PERSONNEL PROPOSED FOR THIS CONTRACT**

*(Complete one Section E for each key person.)*

12. NAME <b>GREG CLEMENTS, PSM</b>	13. ROLE IN THIS CONTRACT <b>SURVEYING &amp; MAPPING</b>	14. YEARS EXPERIENCE	
		a. TOTAL <b>45</b>	b. WITH CURRENT FIRM <b>20</b>
15. FIRM NAME AND LOCATION (City and State) <b>CALVIN, GIORDANO &amp; ASSOCIATES, INC. - FORT LAUDERDALE, FL</b>			
16. EDUCATION (DEGREE AND SPECIALIZATION) * <b>Bachelor of Business Administration, University of Toledo</b> * <b>Geographic Information Systems I &amp; II, offered under the M.S. in Geography Program, Florida Atlantic University</b>		17. CURRENT PROFESSIONAL REGISTRATION (STATE AND DISCIPLINE) <b>Registered PSM, Florida, No. 4479</b> <b>Registered PSM, Ohio, No. 6545</b> <b>Registered PSM, Texas, No. 4197</b>	

18. OTHER PROFESSIONAL QUALIFICATIONS (Publications, Organizations, Training, Awards, etc.)

Mr. Clements has 45 years of experience as a surveyor and mapper. He is expert in all phases of land surveying including the retracement of section lines, lot lines, tract lines, right-of-way (ROW) lines, and centerlines. Mr. Clements' responsibilities include preparation of proposals, budget control, quality control (QA/QC), and technical support for the field crews. He also coordinates the preparation of legal descriptions, record plats, ROW maps, boundary surveys, topographical surveys, and acts as the liaison between the client and the firm.

**19. RELEVANT PROJECTS**

	(1) TITLE AND LOCATION (City and State)	(2) YEAR COMPLETED	
		PROFESSIONAL SERVICES	CONSTRUCTION (if applicable)
a.	<b>SR-953/Le Jeune Road</b> <b>Miami, Florida</b>	<b>2007</b>	
	(3) BRIEF DESCRIPTION (Brief scope, size, cost, etc.) AND SPECIFIC ROLE <input checked="" type="checkbox"/> Check if project performed with current firm Mapping supervisor for survey design file and Project Network Control Sheet for Lejeune Road from US-1 to NW 11th Street, approximately 4 miles.		
b.	<b>SR-973/Galloway Road</b> <b>Miami, Florida</b>	<b>2008</b>	
	(3) BRIEF DESCRIPTION (Brief scope, size, cost, etc.) AND SPECIFIC ROLE <input checked="" type="checkbox"/> Check if project performed with current firm Mapping supervisor for survey design file and Project Network Control Sheet for Galloway Road from SW 40th Street to SW 5th Street, approximately 2 miles.		
c.	<b>Dade-Levee #3, Transmission Line Survey</b> <b>Miami-Dade County, Florida</b>	<b>2008</b>	
	(3) BRIEF DESCRIPTION (Brief scope, size, cost, etc.) AND SPECIFIC ROLE <input checked="" type="checkbox"/> Check if project performed with current firm Design survey for 10.5-mile strip. After design was completed, he field staked approximately 130 structure locations.		
d.	<b>Gulfstream Park</b> <b>Hallandale Beach, Florida</b>	<b>Ongoing</b>	
	(3) BRIEF DESCRIPTION (Brief scope, size, cost, etc.) AND SPECIFIC ROLE <input checked="" type="checkbox"/> Check if project performed with current firm Prepared plat boundary and topographic surveys of 260-acre horse track/entertainment complex. Combined aerial mapping techniques with conventional survey methods to produce a high quality drawing under budget.		
e.	<b>Pembroke Pines City Center</b> <b>City of Pembroke Pines, Florida</b>	<b>Ongoing</b>	
	(3) BRIEF DESCRIPTION (Brief scope, size, cost, etc.) AND SPECIFIC ROLE <input checked="" type="checkbox"/> Check if project performed with current firm Project Surveyor for this 137-acre multi-use project which included boundary and topographic surveys, preparation of a plat, recording in the Public Records of Broward County. He was responsible for the preparation of multiple sketch and descriptions for sales contracts, for inclusion in a Community Development District, and for conveyance to public and private entities.		

**E. RESUMES OF KEY PERSONNEL PROPOSED FOR THIS CONTRACT**

*(Complete one Section E for each key person.)*

12. NAME Sheryl A. Dickey	13. ROLE IN THIS CONTRACT Public Involvement	14. YEARS EXPERIENCE	
		a. TOTAL 25	b. WITH CURRENT FIRM 19
15. FIRM NAME AND LOCATION <i>(City and State)</i> Dickey Consulting Services, Inc. (Fort Lauderdale, Florida)			
16. EDUCATION <i>(Degree and Specialization)</i> B.S.S.W. – Project Management and Public Relations		17. CURRENT PROFESSIONAL REGISTRATION <i>(State and Discipline)</i>	
18. OTHER PROFESSIONAL QUALIFICATIONS <i>(Publications, Organizations, Training, Awards, etc.)</i> Certification-Charrette Planner and Public Meeting Facilitator, Virginia Tech			

**19. RELEVANT PROJECTS**

a	(1) TITLE AND LOCATION <i>(City and State)</i> Public Relations and Community Awareness Services, North County Neighborhood Improvement Project – Broward Co., FL	(2) YEAR COMPLETED	
		PROFESSIONAL SERVICES 2002- Current	CONSTRUCTION <i>(If Applicable)</i>
	(3) BRIEF DESCRIPTION <i>(Brief scope, size, cost, etc.)</i> AND Provide assistance to the staff relative to the public awareness program. Prepare project collateral brochures, flyers, fact sheets, notification letters, news articles, and public notices. Dissemination of brochures, flyers, and notices. Prepare a database of homeowners, residents and businesses. Attend meetings with established neighborhood associations or community groups, schools, PTA's, and business owners. Attend progress meetings and provide coordination assistance during construction. Development and distribution of a newsletter for residents and businesses. Ms. Dickey was the Project Manager for Public Outreach responsible for the above tasks. Ref: Robert Cole, Craven Thompson & Assoc. 954/739-6400	Check if project performed with current firm: <input checked="" type="checkbox"/>	
b	(1) TITLE AND LOCATION <i>(City and State)</i> City of Ft. Lauderdale Water & Wastewater Capital Improvement Program (WaterWorks 2011) Ft. Lauderdale, FL	(2) YEAR COMPLETED	
		PROFESSIONAL SERVICES 2001-2011	CONSTRUCTION <i>(If Applicable)</i>
	(3) BRIEF DESCRIPTION <i>(Brief scope, size, cost, etc.)</i> AND (3) BRIEF DESCRIPTION AND SPECIFIC ROLE Provide Professional Consulting Services in support of the planning and implementation of Public Communication and Public Outreach activities for the Program Management team. Develop and maintain detailed stakeholder and points of communication lists for diverse elements of the City of Fort Lauderdale community; Develop and implement media communication plans to create positive public perception and support for the program to promote a positive image for the program Management team; Develop communication and outreach activity plans detailing specific events and messages to targeted stakeholders, and programming of communication and outreach activities; Prepare documents and graphics for use in public communication activities. Coordinate and manage public communication events. Ms. was the Project Manager for these tasks. Ref: Luis Rioseco, CH2M Hill 954/522-2604	Check if project performed with current firm: <input checked="" type="checkbox"/> <input type="checkbox"/> Check if project performed with current firm	
c	Everglades Holiday Park Master Plan Broward County, FL	(2) YEAR COMPLETED	
		PROFESSIONAL SERVICES 2006-2008	CONSTRUCTION <i>(If Applicable)</i>
	(3) BRIEF DESCRIPTION <i>(Brief scope, size, cost, etc.)</i> AND Develop a Public Involvement Plan (PIP) to assist in determining user needs and priorities for the redevelopment of Everglades Holiday Park: Public Involvement Notices, Interviews with Stakeholders & Focus Groups, Public Workshop, and Facilitated Consensus. Ms. Dickey was the Project Manager for this outreach. Ref: URS Corporation, Bob Zuccaro, 561/862-1050	Check if project performed with current firm: <input checked="" type="checkbox"/>	

**E. RESUMES OF KEY PERSONNEL PROPOSED FOR THIS CONTRACT**

*(Complete one Section E for each key person.)*

12. NAME <b>LAKDAS NANAYAKKARA, PE</b>	13. ROLE IN THIS CONTRACT <b>STRUCTURAL</b>	14. YEARS EXPERIENCE	
		a. TOTAL <b>35</b>	b. WITH CURRENT FIRM
15. FIRM NAME AND LOCATION (City and State) <b>LAKDAS / YOHALEM ENGINEERING, INC. - FORT LAUDERDALE, FL</b>			
16. EDUCATION (DEGREE AND SPECIALIZATION) * Post Graduate Diploma in Structural Engineering – 1981 Council of National Academic Awards England, United Kingdom * Bachelor of Science Honors Degree in Civil Engineering With Structural Engineer Major - 1979		17. CURRENT PROFESSIONAL REGISTRATION (STATE AND DISCIPLINE) <b>PE #37590</b>	

**18. OTHER PROFESSIONAL QUALIFICATIONS** (*Publications, Organizations, Training, Awards, etc.*)

Mr. Nanayakkara has extensive experience in civil and structural condition survey, design, inspection and construction management of buildings, bridges, water control structures, water and waste water treatment plants. Mr. Nanayakkara's experience extends to design and construction observation of more than 2000 projects in Florida, Minnesota, South Dakota and in seven islands in the Caribbean Basin.

As president of Lakdas/Yohalem Engineering, Inc., he has been practicing civil, structural and marine engineering services for many state, county and city agencies in support of high visible and miscellaneous public projects during the last 38 years in South Florida.

**19. RELEVANT PROJECTS**

	(1) TITLE AND LOCATION ( <i>City and State</i> )	(2) YEAR COMPLETED	
		PROFESSIONAL SERVICES	CONSTRUCTION (if applicable)
a.	<b>Pine Island Road Bridge Fort Lauderdale, Florida</b>	2006	
	(3) BRIEF DESCRIPTION (Brief scope, size, cost, etc.) AND SPECIFIC ROLE <input checked="" type="checkbox"/> Check if project performed with current firm This structure is a 110' long, 3 span, 4 lane median and side walk on each side Type II AASHTO girder bridge with a continuous cast in place and prestressed concrete pile foundations. Lakdas served as the Project Engineer and was responsible for the overall design of the bridge. Lakdas designed the girders and deck for this bridge and performed QA of the remaining structural components including construction phase.		
b.	<b>South East 9th Ave Pompano Beach, Florida</b>	2004	
	(3) BRIEF DESCRIPTION (Brief scope, size, cost, etc.) AND SPECIFIC ROLE <input checked="" type="checkbox"/> Check if project performed with current firm This structure is a 22'-6" long, single span two lane 16" thick solid concrete deck prestressed concrete pile foundations. Lakdas served as the Project Engineer and was responsible for the overall design of the bridge. Including end bents and deck for this bridge and performed QA of the remaining structural components including construction phase.		
c.	<b>Park Projects</b>		
	(3) BRIEF DESCRIPTION ( <i>Brief scope, size, cost, etc.</i> ) AND SPECIFIC ROLE <input checked="" type="checkbox"/> Check if project performed with current firm <ul style="list-style-type: none"> <li>• Blvd. Heights Community Center - West Sports Park</li> <li>• Athalie Range Park</li> <li>• Frost Park Restroom Renovation</li> <li>• Veteran's Park - City of Lauderhill</li> <li>• Boat &amp; Dock Ramp - City of Margate (Veteran's Park)</li> <li>• Renovations to Fishing Pier at Hillsboro, City of Pompano Beach</li> <li>• Air Park, City of Pompano Beach</li> <li>• Long Key Nature Center</li> <li>• Westgate Park</li> <li>• Vistaview Park Expansion</li> <li>• Lauderhill Park</li> <li>• Hillsboro Inlet Park, City of Pompano Beach</li> <li>• Riverland Park</li> <li>• Community Park Playground, City of Pompano Beach</li> <li>• Plantation Central Park</li> <li>• Pet Park in Aventura</li> </ul>		

**E. RESUMES OF KEY PERSONNEL PROPOSED FOR THIS CONTRACT**  
(Complete one Section E for each key person.)

12. NAME		13. ROLE IN THIS CONTRACT		14. YEARS EXPERIENCE	
<b>Kumar A. Allady, P.E.</b>		<b>Principal Geotechnical Engineer</b>		a. TOTAL <b>23</b>	b. WITH CURRENT FIRM <b>17</b>
15. FIRM NAME AND LOCATION (City and State) <b>RADISE International, LC, Riviera Beach, Florida</b>					
16. EDUCATION (DEGREE AND SPECIALIZATION) Ph.D. Course work and Qualifiers, Ocean Engineering Florida Atlantic University 1992-1996 M.Sc., Civil Engineering (Structural), Osmania University, Hyderabad, India 1992			17. CURRENT PROFESSIONAL REGISTRATION (STATE AND DISCIPLINE) Registered Professional Engineer: Florida 1997		
18. OTHER PROFESSIONAL QUALIFICATIONS (Publications, Organizations, Training, Awards, etc.) Member American Society of Highway Engineers (ASHE), American Society of Civil Engineers (ASCE), Florida Engineering Society (FES)					
<b>19. RELEVANT PROJECTS</b>					
a.	(1) TITLE AND LOCATION (City and State) <b>STA 2/Cell 4 Expansion Project, Palm Beach County, FL</b>			(2) YEAR COMPLETED	
				PROFESSIONAL SERVICES 2006	CONSTRUCTION (if applicable)
(3) BRIEF DESCRIPTION (Brief scope, size, cost, etc.) AND SPECIFIC ROLE <input checked="" type="checkbox"/> Check if project performed with current firm STA 2/ Cell 4, referred to as "Compartment B", use as part of the Everglades Agricultural Areas (EAA) Storage Reservoir Project. The Compartment B will provide over 9,500 acres of additional wetlands treatment area for further reduction of phosphorus levels in the Everglades Protection Area. Project components include levees, canals, bridge culvert structures and weir structures and pump station. Performed duties as Principal-In-Charge.					
b.	(1) TITLE AND LOCATION (City and State) <b>Everglades Agricultural Area A-1 Flow Equalization Basin, Palm Beach County, FL</b>			(2) YEAR COMPLETED	
				PROFESSIONAL SERVICES 2013	CONSTRUCTION (if applicable)
(3) BRIEF DESCRIPTION (Brief scope, size, cost, etc.) AND SPECIFIC ROLE <input checked="" type="checkbox"/> Check if project performed with current firm Provided field investigation and geotechnical engineering design services for the 15,000 acre attenuation basin. The project will be enclosed by earthen levees with gated inflow and outflow structures. Responsible for the subsurface exploration, laboratory testing, and geotechnical engineering analysis and design for the approximately 11-foot high perimeter levees. The design considerations included seepage, slope stability, settlement and erosion protection analyses for the various levee and canal cross sections. Performed duties as Principal-In-Charge.					
c.	(1) TITLE AND LOCATION (City and State) <b>Hillsboro Canal Bank Stabilization - Sections 1 through 6 Palm Beach and Broward Counties, FL</b>			(2) YEAR COMPLETED	
				PROFESSIONAL SERVICES 2013	CONSTRUCTION (if applicable)
(3) BRIEF DESCRIPTION (Brief scope, size, cost, etc.) AND SPECIFIC ROLE <input checked="" type="checkbox"/> Check if project performed with current firm The Canal section is approximately 10.4 miles long, from Structure S-39 to US1 between SW 18th Street and Hillsboro Boulevard. Provided engineering oversight on this project that included geotechnical field exploration and testing at selected locations along the north and south banks of the Hillsboro Canal, including standard penetration test borings, double ring infiltrometer tests, hydraulic conductivity tests per SFWMD open-hole method, rock coring, test pits, laboratory testing, and Slope Stability analysis for typical canal cross-sections with different slope stabilization alternatives for different water levels, normal operating levels, dried up condition and a 100-year flood. The slope stabilization alternatives analyzed included Riprap Types A and B, High Performance Turf Reinforcement Mat (HPTRM), Articulated Concrete Block Mat (ACBM) and Gabion Mattress. Principal-In-Charge.					
d.	(1) TITLE AND LOCATION (City and State) <b>Pump Station S-5A, Palm Beach County, FL</b>			(2) YEAR COMPLETED	
				PROFESSIONAL SERVICES 2009	CONSTRUCTION (if applicable)
(3) BRIEF DESCRIPTION (Brief scope, size, cost, etc.) AND SPECIFIC ROLE <input checked="" type="checkbox"/> Check if project performed with current firm Performed geotechnical field exploration and laboratory testing to determine subsurface conditions for the proposed structure. Our service also includes the geotechnical recommendations for the new generators foundation and evaluation of the allowable soil bearing pressures for the existing office building. Geotechnical Project Manager.					
e.	(1) TITLE AND LOCATION (City and State) <b>The C-111 Spreader Canal Project Miami-Dade County, FL</b>			(2) YEAR COMPLETED	
				PROFESSIONAL SERVICES 2011	CONSTRUCTION (if applicable)
(3) BRIEF DESCRIPTION (Brief scope, size, cost, etc.) AND SPECIFIC ROLE <input checked="" type="checkbox"/> Check if project performed with current firm Project is one of 68 components of multi-purpose CERP project. This project is part of Acceler8 project for the ecosystem restoration of freshwater wetlands, tidal wetlands and near-shore habitat, maintenance of flood protection, and recreation opportunities. Project consists of design and construction of a reservoir, infiltration basin, pump stations, culverts, spreader canal, water control structures and water quality enhancements at Ludlum Slough. Performed duties as Project Manager					



**E. RESUMES OF KEY PERSONNEL PROPOSED FOR THIS CONTRACT**  
(Complete one Section E for each key person.)

12. NAME		13. ROLE IN THIS CONTRACT		14. YEARS EXPERIENCE	
<b>Gregory J. Stelmack, P.E.</b>		Project/Contract Manager		a. TOTAL <b>24</b>	b. WITH CURRENT FIRM <b>2+</b>
15. FIRM NAME AND LOCATION (City and State) RADISE International, L.C., Riviera Beach, Florida					
16. EDUCATION (DEGREE AND SPECIALIZATION) BS, Civil & Environmental Engineering, 1989 - University of Wisconsin, Madison Management Seminars, 1993 to 1995, 1998 Business Education Services, 1993 to 1994, 1997			17. CURRENT PROFESSIONAL REGISTRATION (STATE AND DISCIPLINE) Professional Engineer, Wisconsin No. 37085-006 Professional Engineer, Michigan No. 6201052365 Professional Engineer, Minnesota No. 44132 Professional Engineer, Kansas No. 20438 Professional Engineer, Missouri No. 2009010392 Professional Engineer, Florida No. 70556		
18. OTHER PROFESSIONAL QUALIFICATIONS (Publications, Organizations, Training, Awards, etc.) Society of American Military Engineers, American Society of Civil Engineers (ASCE), 40-hr OSHA HAZWOPER, 1995 8-hr OSHA HAZWOPER Refresher, 1995 – present, 8-hr OSHA Supervisor, 2000					
19. RELEVANT PROJECTS					
a.	(1) TITLE AND LOCATION (City and State) <b>SFWMD Environmental Services Laboratory West Palm Beach, FL</b>			(2) YEAR COMPLETED	
				PROFESSIONAL SERVICES 2012	CONSTRUCTION (if applicable)
(3) BRIEF DESCRIPTION (Brief scope, size, cost, etc.) AND SPECIFIC ROLE Project consisted of the construction of a new two-story building that will be used for environmental and water quality testing for water samples collected throughout southern Florida. Professional engineering oversight of QC Field and Laboratory testing. Construction inspection included field densities on subgrade and base course material, normal and pervious concrete testing, and asphalt testing. Performed duties as Project Manager.			<input checked="" type="checkbox"/> Check if project performed with current firm		
b.	(1) TITLE AND LOCATION (City and State) <b>Everglades Agricultural Area A-1 Flow Equalization Basin, Palm Beach County, FL</b>			(2) YEAR COMPLETED	
				PROFESSIONAL SERVICES 2013	CONSTRUCTION (if applicable)
(3) BRIEF DESCRIPTION (Brief scope, size, cost, etc.) AND SPECIFIC ROLE Provided field investigation and geotechnical engineering design services for the 15,000 acre attenuation basin. The project will be enclosed by earthen levees with gated inflow and outflow structures. Responsible for the subsurface exploration, laboratory testing, and geotechnical engineering analysis and design for the approximately 11-foot high perimeter levees. The design considerations included seepage, slope stability, settlement and erosion protection analyses for the various levee and canal cross sections. Performed duties as Project Manager.			<input checked="" type="checkbox"/> Check if project performed with current firm		
c.	(1) TITLE AND LOCATION (City and State) <b>East Point Pump Station Palm Beach County, FL</b>			(2) YEAR COMPLETED	
				PROFESSIONAL SERVICES 2013	CONSTRUCTION (if applicable)
(3) BRIEF DESCRIPTION (Brief scope, size, cost, etc.) AND SPECIFIC ROLE Seacoast Utility Pump Station Project, provided Geotechnical design and construction recommendation for dewatering, sheet pile installation, foundation elements and embankments. Also EOR during construction. Geotechnical Engineer of Record.			<input checked="" type="checkbox"/> Check if project performed with current firm		
d.	(1) TITLE AND LOCATION (City and State) <b>Hillsboro Canal Bank Stabilization - Sections 1 through 6 Palm Beach and Broward Counties, FL</b>			(2) YEAR COMPLETED	
				PROFESSIONAL SERVICES 2013	CONSTRUCTION (if applicable)
(3) BRIEF DESCRIPTION (Brief scope, size, cost, etc.) AND SPECIFIC ROLE The Canal section is approximately 10.4 miles long, from Structure S-39 to US1 between SW 18th Street and Hillsboro Boulevard. Provided engineering oversight on this project that included geotechnical field exploration and testing at selected locations along the north and south banks of the Hillsboro Canal, including standard penetration test borings, double ring infiltrometer tests, hydraulic conductivity tests per SFWMD open-hole method, rock coring, test pits, laboratory testing, and Slope Stability analysis for typical canal cross-sections with different slope stabilization alternatives for different water levels, normal operating levels, dried up condition and a 100-year flood. The slope stabilization alternatives analyzed included Riprap Types A and B, High Performance Turf Reinforcement Mat (HPTRM), Articulated Concrete Block Mat (ACBM) and Gabion Mattress. Project Manager			<input checked="" type="checkbox"/> Check if project performed with current firm		
e.	(1) TITLE AND LOCATION (City and State) <b>Wastewater Treatment Plants (WWTP's), Wisconsin</b>			(2) YEAR COMPLETED	
				PROFESSIONAL SERVICES 2008	CONSTRUCTION (if applicable)
(3) BRIEF DESCRIPTION (Brief scope, size, cost, etc.) AND SPECIFIC ROLE Geotechnical design recommendations and CMT testing services at 9 WWTP, including Chippewa Falls, Eau Claire, Marshfield, Menomonie, Rice Lake, Bloomer, Stanley, Boyd, and Black River Falls, WI. Involved multiple foundation types, embankment/berm construction, dewatering of deep foundation elements, and construction oversight. Performed duties as Geotechnical Engineer of Record and CMT Senior Manager			<input checked="" type="checkbox"/> Check if project performed with current firm		



## SECTION 5 PROJECT MANAGER'S EXPERIENCE



Jenna Martinetti, Senior Project Manager, has ten years of engineering experience and has worked on projects from inception to project close out including supporting documents and coordination between all involved parties. Ms. Martinetti will be the liaison and project

manager for the civil engineering projects related to this RFQ. Her role is to keep open communication with the City staff throughout the life of the projects. Ms. Martinetti will not only oversee the design team but also the project budget and schedule. She is familiar with the project, excels in management and leadership of the project team, and places emphasis on communication and buy-in from the community affected by the project. Project coordination and communication between the team and the City will be accomplished by team meetings held at kickoff and in advance of project milestones, and supplemented with phone and email contact as well as meeting minutes distribution. The project manager and team's goal is to minimize the time the City needs to devote to the project.

Ms. Martinetti is currently project manager for projects within the City of Dania Beach and City of Hallandale Beach related to water, wastewater, and stormwater infrastructure improvement projects. Her project management experience includes design of water mains, sewage force mains, lift stations, fuel station, site design and stormwater projects as well as permitting, preparation of specifications and bidding documents, engineering during construction and project close-out. She also assists in grant writing and supporting documentation for FDEP and FEMA grant applications and is familiar with FEMA's latest benefit cost analysis software. In addition, Ms. Martinetti's highway design experience includes design for milling and resurfacing, widening, reconstruction, safety improvement projects, ADA upgrades and compliance, drainage improvements, signing and pavement markings, traffic control plans, and storm water pollution prevention control plans.

Ms. Martinetti, combined with the selected project team provides highly experienced staff depth for this contract as required to implement the project identified in the RFQ.



## SECTION 6 APPROACH TO SCOPE OF WORK

### SERVICES APPROACH

The **Calvin, Giordano & Associates, Inc. (CGA) Team** has thoroughly reviewed the scope of work outlined in the RFQ document, and we are confident that CGA is the firm who can best provide a service value for the City of Fort Lauderdale for the identified services. Our engineers, landscape architects, environmental professionals, grant administrators, and other team members will provide a well-thought-out plan and exceptional solution that the City and its selected contractor can execute and follow through construction of the proposed improvements.

CGA's offices are located at 1800 Eller Drive in the City of Fort Lauderdale, immediately adjacent to the south entrance to Port Everglades, and less than a 10-minute drive from the project site and City Hall.

CGA provides Civil Engineering, Land Surveying, Landscape Architecture, Environmental Resources Protection, Grant Administration, and GIS services, as well as Planning, Platting, Traffic Engineering, Electrical Engineering, Information and Data Technology, Construction Management, and Construction Engineering Inspection (CEI) services. CGA's Civil Engineering staff includes 14 licensed Professional Engineers, 5 Engineer Interns, and 3 Cadd Drafting Technicians; our Landscape Architecture staff includes 2 registered Landscape Architects, an Urban Planner, and a Cadd Draftsman/Site Planner; and our Land Surveying staff includes 2 Professional Surveyor and Mappers, 3 survey crews, and 2 Cadd drafting technicians. Currently, our Design Group - consisting of the Civil Engineering, Land Surveying, Landscape Architecture, Traffic Engineering, and Electrical Engineering Departments - is operating below its workload capacity and is in need of additional work to support the group. CGA is committed to dedicating the appropriate personnel and resources to this project to ensure its efficient and successful completion. The timing and scope of this project make it an ideal fit for our organization at this time.

### SCOPE AND VISION

The Calvin, Giordano Team will obtain any available information about the existing stormwater management system via existing GIS data, maps, as-builts, permit research and information that can be provided by the City. CGA will complete an initial evaluation and inventory of the Stormwater infrastructure and a survey of the south portion of the Riveroaks neighborhood to collect any missing information. CGA's Team will research existing records that span decades of development. Collection of data using the latest GPS technology will produce the most accurate maps possible for the design and stormwater modeling. These maps will include all existing utilities, above ground improvements within the R/W and existing drainage improvements. In addition we can convert all information to an electronic as-built record data base for the development of the GIS / AutoCAD inventory of maps. We will model the existing system with our modeling software, report our findings and comparisons with the current Level of Service, and will then identify and prioritize areas that need improvements.

Cost effective alternatives that include Level of Service improvements and environmental applications for water quality and quantity will be explored and presented to the City for consideration and implementation. These may include a collection and transmission system with surface retention, eco-swales, pumps with a network of deep injection wells, or some combination of these options and other alternatives.

CGA understands the conditions of a municipality situated in the coastal area of Broward County, with surface elevations slightly above sea level and limited options for drainage. Our stormwater management plan will address potential flooding and non-point-source pollution impacts of existing or proposed stormwater management systems.



CGA has a long track record obtaining grants and identifying other revenue sources to assist the City from concept to completion of the project. Options and opportunities include grants, loans, stormwater assessments, and public/private partnerships. We have assisted other municipalities with stormwater sustainability ordinances and workshops with the neighborhoods to discuss and eventually approve special assessments to improve the communities' the levels of service.

Throughout all phases of a project, Calvin, Giordano & Associates makes a commitment to provide the utmost levels of quality control and professionalism in the realization of the client's vision and plan. Additionally, we take great pride in always seeking mechanisms and means through which projects can be more sustainable on our economies and environment while keeping stakeholders and residents informed.

### CGA PROCESS

The design team at Calvin, Giordano & Associates has developed a tiered methodology of project design development that applies to this RFQ's scope that has proven as an effective mechanism to adequately ensure proper development of a project and inclusion of the Client or stakeholders in the process. This process is outlined and described as follows:

- Scoping & Planning
- Inventory & Data Collection
- Analysis and Modeling
- Design schematics
- Stakeholder input
- Design development
- Final Model and Report

**Scoping and Planning** – The Calvin, Giordano Team will have a project kick-off meeting with the Client's Project Manager to obtain a full understanding of the project parameters, community sensitivities, areas of concern, time constraints, and economic requirements. We will then prepare a project schedule and budget as we initiate inventory and data collection efforts. The schedule will be prepared in Microsoft Project to facilitate effective project management and execution of the work in the optimum timeframe while allowing tracking of task completions and of milestones.

**Inventory & Data Collection** – Throughout the inventory phase, all pertinent information affecting the design and impact of a project are assembled and compared against the City's existing Stormwater Master Plan and available as-built information and G.I.S. Data. Throughout this process topographic information is verified for acceptable level of accuracy with the addition of any new stormwater features. Utility request letters are sent out, permit research is conducted and site visits are made. Coordination with adjacent projects such as the FDOT Railroad Bridge relocation would occur during this initial phase. Soil and water sampling, any required environmental assessments and geotechnical analysis would get started in order to have the required data and reports ready for the analysis phase of the project.

**Analysis and Modeling** – Once all the information has been assembled through the inventory phase, design staff conducts analyses to interpret the data through stormwater modeling software and provides scenarios with simulations – principally to identify and foresee any potential conflicts and constraints, as well as to shed light on additional opportunities available that will further the success of the project, be it via design or through the logistical process of documentation, permitting or construction. Additional site visits to verify information as well as pre-application meetings with the agencies occur during this phase. Since this project involves a stormwater preserve park and wetlands, environmental coordination with the agencies is critical to start early in the design process.

**Design Schematics** – Conceptual design schematics are presented that describe the overall concept of and vision for the project and target areas, program distribution and potential detail and material finishes that will contribute to the finish character of the plan. These conceptual plans are utilized for meetings with relevant City staff in anticipation of community meetings. These plans will be utilized to coordinate with FDOT for placement of the railroad bridge.

**Stakeholder Input** – As this project lies in residential areas, it will be essential to engage stakeholders, solicit their input and incorporate that input early on in the design process to obtain buy-in from those individuals most impacted by the project. Design schematics allow for modulation of the design to meet the needs





and requests made by stakeholders, while presenting a stage of the process that conveys commitment from the investor.

**Design Development** – Once stakeholder input has been obtained and implemented in the design, the design then enters into a development phase wherein our design team narrows in on the details and specifics of the project, pending a final design approval by the Client while meeting the current regulatory requirements and providing cost effective alternatives. This phase involves frequent meetings with the City to ensure the project design is progressing as intended. Coordination with the regulatory agencies is completed during this time.

**Final Model and Report** – Once the client approves the final design and permits are obtained, the model will be completed and the final report will be produced to document the findings and our proposed design.

**GRANT EXPERIENCE**

CGA also has extensive experience facilitating grants writing and administration services for our many clients. Our systematic approach to applying for grants has proven to be successful, returning a high rate of positive results. Internally, our grants are overseen by our Grants Coordinator, who assesses the needs of each grant to strategize the best method for approach. The Grants Coordinator then relies on directed technical expertise provided by an assigned professional in each of the disciplines, contributing to the overall submittal package.

Our success with grants has produced repeated positive results, including:

- City of West Park - South Florida Water Management \$250,000 for Stormwater
- City of West Park - Florida Department of Environmental Protection \$250,000 for Stormwater
- Town of Surfside - Florida Department of Environmental Protection \$1,347,500 for Stormwater
- Town of Surfside - Florida Department of Environmental Protection \$125,000 for Sanitary Sewer
- City of Weston - Community Budget Issue Request (CBIRS) \$1,000,000 for Stormwater

- City of Weston – FEMA \$1,361,700 for Stormwater
- City of Weston - Community Budget Issue Request (CBIRS) \$1,000,000 for Stormwater
- City of Weston – Congress \$492,000 for Stormwater
- City of Weston – FDEP \$100,000 for Stormwater
- Bonaventure Blvd. and I-75 Intersection (Pavers, Landscaping, Irrigation & Bridge Painting) \$65,000 Grant amount & \$140,000 total project cost.
- City of Weston – Broward Beautiful GreenSHADE Grant
- City of Weston – Florida Urban & Community Forestry Grant - Inventory & Mapping of City Trees \$ 35,000 Grant amount & \$70,000 total project costs
- I – 75 Interchanges at Indian Trace and Glades Pky. (f.k.a. Arvida Pky.) (Landscaping & Irrigation of embankments)
- City of Dania Beach- Broward Beautiful FDOT State Thoroughfare Grant (Pavers, Landscaping & Irrigation) \$100,000 Grant amount & \$150,000 total project cost.

**QUALITY ASSURANCE/QUALITY CONTROL**

The QC process begins with the Calvin, Giordano Quality Control Handbook. This handbook will be utilized to develop the project specific plan. Quality is not a quantity which can be added to a work product through any review process. Therefore, CGA’s approach makes quality an integral part of the project from conception to construction.

The Quality Control process is a major agenda item at the kickoff meeting with the design team. All team meetings will address quality by measuring progress against the client’s expectations. The team will meet all product requirements, technical requirements, budget requirements, and schedule requirements or will take immediate corrective action to bring the project back in line with these expectations. This is the reason the frequent team status meetings are required.

These progress meetings are supplemented by a peer review process where a design group not assigned to the particular assignment will review the plan documents with a fresh perspective. Any comments received from this peer review are addressed by the



project manager which will assign tasks for corrective actions to be taken. All corrections are then resubmitted to the firm's Director of Quality Control and Quality Assurance for final sign off before being released. This quality review is performed as part of our quality assurance program.

It has been found that even the best component peer review process, though effective within the particular discipline being reviewed, may miss the big picture and result in a lack of congruence in the overall product. It is for this reason that CGA has instituted the policy of a multi-disciplined review of the product before it is released to the client. By involving the whole team in the entire project quality process, a sense of ownership can develop which keeps team members focused on quality throughout the design process.

CGA's philosophy and corresponding process to assure quality in all of our designs and work products integrates the following key components:

- Initial Quality of Design
- Multidiscipline Peer Review
- Design Decision Documentation
- Constructability Review
- Value Engineering
- "Community Engineering"
- Post-Construction Re-Examination

Each of these components is described in detail below:

**Initial Quality of Design** – The first step of the QA/QC process is to ensure that the plan document is of "high initial quality". In other words, the preliminary plan document is one that has been carefully thought through and comprehensively analyzed by a qualified engineer with expertise specific to the demands of the project. Design tasks are not assigned to engineers that do not have sufficient expertise in the areas required, or that do not have sufficient experience to be able to make competent key decisions early in the design process. A preliminary design must be able to stand alone on its own merits, and it is an unacceptable practice at CGA to allow engineers to omit "pieces" of the design presuming agency reviewers or others will fill in the gaps.

**Multi-discipline Peer Review:** The next step in the QA/QC process is the performance of a multi-discipline peer review. This phase of review is undertaken by a committee of designers from various disciplines within the firm (or "core team" when teaming with others) so that potential improvements or innovative ideas can be introduced to further improve the initial design. This process is important to ensure that related design elements from the various disciplines work cohesively so that one discipline's component does not cause problems for another discipline's portion of the design. A perfect example is in the design of a divided roadway with median landscaping in which the roadway engineer, traffic engineer and landscape architect must make sure that all sight distances and clear zones are maintained for the project.

This peer review group therefore may consist of the following:

- Roadway Engineers
- Civil Engineers
- Utilities/Drainage Engineers
- Traffic Engineers/Transportation Planners
- Land Planners
- Surveyors
- Urban Designers
- Landscape/Streetscape Architects
- Electrical Engineers
- Environmental Scientists
- Construction Management Personnel / CEI
- Structural Engineers

This peer review is typically conducted in a "workshop" or "charette" type setting in which participants sit around a large conference table with the plans and have easels and/or white boards available to sketch out concepts or revisions. The participants troubleshoot for fatal flaws, provide critiques, and generally toss around, and often debate ideas and possible innovations to the plans.

**Design-Decision Documentation** – Although documentation is an important part of all projects, it is critically important to fully document the assumptions, reasoning, calculations, etc. leading up to any key design decisions made on a project, particularly if safety



issues are involved. The process of documentation not only provides good records, but it provides another opportunity for the decision makers to examine the logic of the decisions made, as things often become more apparent when a written record of the process is made. This inherently leads to better decision-making, and in turn, better projects. Most people can remember making a decision, but how and why they made that decision, or who else was in agreement, may not be so easily remembered months later. Documenting decisions also establishes a record of the “coalition of concurrence” that existed at the time the decision was made, but which may become more difficult to recreate as time passes. It is also important to document the assumptions and environment at the time the decision was made because these things can also change after time.

**Constructability Review** – The “constructability” of a design is an important facet to consider during each phase of a design’s development, however, when a preliminary design is nearing substantial completion (90% plans), it undergoes an in-house constructability review by our CEI and Construction Management departments. This review specifically ensures that the plans make sense from a construction perspective, and is intended to minimize potential problems in the field during construction. Many of the items targeted for this review include, but are not limited to:

- Grading & elevations
- Drainage
- Materials and testing
- Standard details and specifications
- Potential utilities conflicts
- Coordination with adjacent construction projects
- Conflicting agency permitting requirements
- Logic of construction timing and phasing
- Maintenance of traffic / work zone safety
- Adverse impacts to community during construction

**Value Engineering** – Value engineering is one of those industry buzzwords that is sometimes overused or misinterpreted. All projects should inherently be value-engineered. An integral part of the design process is to produce a cost-effective project for the owner or client.

This being said, most agencies view “value engineering” as a separate step in the design process in which engineers are asked to “step out of the box” and examine whether there may be creative ways to provide an equal or better design for less initial cost, or less overall cost during the lifetime of the project. This cost-saving process is often automatically performed in the private sector simply because of the demands of the client and private financing, but public sector projects are traditionally subjected to much thicker layers of standardization which have had the unintended effect of creating less innovative, more “vanilla” projects. Designers are sometimes afraid to stray from the standard designs due to liability or other reasons, and therefore tend to stick with more standard, possibly over-designed projects that were ultimately more expensive.

CGA believes that a true value engineering effort must include objective input from external reviewers that are not necessarily familiar with the project. No matter how astute, the in-house designers involved in a project are typically disadvantaged for being able to discern an innovative cost-saving solution or alternative. We therefore utilize professionals from other consulting firms that we have a good working relationship to participate in projects in which we invoke this external value engineering process.

**“Community Engineering”** – The term “community engineering”, or perhaps the more accurate “political engineering”, is a term we often reserve for municipal projects to remind us that no matter how great we think our ultimate design may be, it has to pass the less tangible test of being accepted by the public and community leaders. This means that the design must be consistent and compatible with the adjacent surroundings and fit in with the objectives of the neighborhood and prevailing political environment. On a more national scale, the Federal Highway Administration and other professional engineering organizations have adopted the term “Context Sensitive Design,” and have established guidelines for federally funded projects in order ensure large projects are compatible with the local character of the community.

Therefore, “community engineering” or “context sensitivity” must be part of the first step of the design pro-



cess, and continue through to final plans preparation. Even in very small local improvement projects, this concept is very important. Just imagine presenting a final intersection design that consisted of standard steel-gray galvanized traffic signal mast-arms, concrete separators and concrete light poles at the end of a corridor that was just designed by others with new landscaping, brick-paver islands and antique verde green street lamps as part of another enhancement project.


**Post-Construction Re-Examination** – This post-construction evaluation process is a process that CGA undertakes at the end of certain projects in order

to learn more about what could have been done to produce an even better design. Much of the time, we examine contractor's requests for information or unanticipated change orders that occurred during construction. Sometimes we find that items that may have seemed clear to the engineer or designer were not clear or were misinterpreted in the field by the contractor. Sometimes contractors try to find ways to invoke change orders, but other times, there are legitimate issues with the plans provided. As an example, we often find that the provision of additional details, special details or more specific of notes would have alleviated many of these issues, and therefore we try to include these items in future plans.





## SECTION 7 REFERENCES

CLIENT / CONTACT	DESCRIPTION OF WORK	DATE OF COMPLETION	COST
<p>Denise Barrett <i>Communications Director</i> dbarrett@westonfl.org</p> <p>City of Weston 17200 Royal Palm Blvd Weston, FL 33326 (954) 385-2000 (954) 385-2010 (Fax)</p>	 <p><b>WESTON DRAINAGE</b> <i>City of Weston, Florida</i></p> <p>CGA analyzed and modeled the City’s existing stormwater management system which consists of collection systems draining into interconnected lake system discharging into the South Florida Water Management District (SFWMD) canals. The City contains 15,000 acres of land within Indian Trace Development District (ITDD) and the Bonaventure Development District (BDD), both of which are within the South Florida Water Management District (SFWMD). The City is contained between the Everglades on the west, Griffin Road on the south, Interstate 75 on the east, and Interstate 75 on the north. The water quality and discharge rates are permitted to be controlled by stormwater pump stations. The results of the hydraulic model indicated that a few of the interconnecting culverts were undersized and the collections system needed upgrading. Site visits during rain events highlighted areas that had surface drainage issues. The scope of the project includes replacing undersized culverts and upgrading the collection system with new catch basins, piping, outfalls and French drains in different areas throughout the City. Traffic control phasing including limiting road closures on adjacent streets and detour routes were detailed in the construction documents in order to minimize impacts to the residents and road users in the City.</p>	<p>2012</p>	<p>Construction Cost \$2,000,000.00</p> <p>CGA Fees \$200,000.00</p>



CLIENT / CONTACT	DESCRIPTION OF WORK	DATE OF COMPLETION	COST
	<p><i>Continued from previous page</i></p> <p>CGA secured grant funding for this project by modifying an existing HMGP grant that was used to upgrade the pump stations in 2009. The FEMA BCA software was utilized to apply for the modification and justify the project. CGA prepared and submitted all supporting documentation while working with the City and FDEM to obtain the additional funding for the vital project. The project will improve the water management system's hydraulic performance and lower the flood stage in flood - prone areas.</p>		



CLIENT / CONTACT	DESCRIPTION OF WORK	DATE OF COMPLETION	COST
<p>J.C. Jimenez <i>Assistant Town Manager</i> jcjimenez@ bayharborislands.net</p> <p>Town of Bay Harbor Islands 9665 Bay Harbor Terrace Bay Harbor Islands, FL 33154 (305) 866-6241 (305) 866-4863 (Fax)</p>	 <p><b>92ND STREET PARK</b> <i>Bay Harbor Islands, Florida</i></p> <p>As a component of the Town-wide parks and open space master plan discussions moderated by CGA, an under-utilized parking lot was converted to a park space. The program for the park included an open green lawn area that could serve for multiple functions and a dedicated dog run area. Under a very tight and demanding schedule, CGA designed, permitted and provided construction administration services for the entirety of the park. At its core, the park design sought to establish an urban relationship with its surrounding walk-to context. The design provides an urban plaza that is open and accessible at all times, in addition to the multi-use field and dog areas, which are only open during daytime hours. The design was articulated to provide as much space as users can personalize with various seating options to facilitate visitors' use of the facilities, as well as exercise equipment, doggie agility equipment, water fountains, solar-powered lighting and ample use of shade.</p>	<p>2010</p>	<p>Est. Construction \$450,000.00</p> <p>CGA Fees \$40,000.00</p>



CLIENT / CONTACT	DESCRIPTION OF WORK	DATE OF COMPLETION	COST
<p>Randy Stokes <i>CIP Manager</i> rstokes@townofsurfsidefl.gov</p> <p>Town of Surfside 9293 Harding Avenue Surfside, FL 33154 (954) 494-7497</p>	 <p><b>STORMWATER MASTER PLAN</b> <i>Town of Surfside, Florida</i></p> <p>CGA designed, permitting and received multiple grants to improve conveyance from the streets and into drainage wells, thus reducing pollutant loads on Biscayne Bay.</p> <p>CGA employed full time inspectors to oversee and direct the installation of nine drainage wells in three pump stations with pumps, controllers and appurtenances. The project also included the installation of 7,000 LF of RCP pipe and 14 control structures.</p> <p>The inspectors were integral in the contractor/engineer coordination, documentation and implementation of the drainage system. The inspectors also acted as liaisons to the residents adjacent to the proposed drainage pump stations and were integral in obtaining resolution to control panel location that was acceptable to all parties.</p>	2014	<p>Est. / Actual- Construction \$2,100,00.00</p> <p>CGA Fees \$399,500.00</p>





## SECTION 8 MINORITY/WOMEN (M/WBE) PARTICIPATION

CGA is not a Minority/Women Business Enterprise. However, CGA recognizes that we have a personal and professional responsibility to reach out to minority-owned firms and is committed to providing development opportunities for them. CGA continually works regularly with these firms and assist them in professional development by providing support, guidance and a work flow knowledge that they can use to plan and grow their own business.

With offices in throughout South Florida, we have a personal and professional vested interest in the success, growth and betterment of our surrounding environment and all of its inhabitants. CGA will continue our efforts to reinvest in the local community and involve minority and women-owned sub-consultants when ever possible in our projects.

CGA's current commitment to use Minority Business Enterprises is evidenced by the use of the following sub-consultants.





# SECTION 9 SAMPLE INSURANCE CERTIFICATE



## CERTIFICATE OF LIABILITY INSURANCE

CALVI-2 OP ID: E1

DATE (MM/DD/YYYY)  
12/30/13

THIS CERTIFICATE IS ISSUED AS A MATTER OF INFORMATION ONLY AND CONFERS NO RIGHTS UPON THE CERTIFICATE HOLDER. THIS CERTIFICATE DOES NOT AFFIRMATIVELY OR NEGATIVELY AMEND, EXTEND OR ALTER THE COVERAGE AFFORDED BY THE POLICIES BELOW. THIS CERTIFICATE OF INSURANCE DOES NOT CONSTITUTE A CONTRACT BETWEEN THE ISSUING INSURER(S), AUTHORIZED REPRESENTATIVE OR PRODUCER, AND THE CERTIFICATE HOLDER.

IMPORTANT: If the certificate holder is an ADDITIONAL INSURED, the policy(ies) must be endorsed. If SUBROGATION IS WAIVED, subject to the terms and conditions of the policy, certain policies may require an endorsement. A statement on this certificate does not confer rights to the certificate holder in lieu of such endorsement(s).


PRODUCER Brown & Brown of Florida, Inc. 1201 W Cypress Creek Rd # 130 P.O. Box 5727 Ft. Lauderdale, FL 33310-5727 Stephen E. Patton, AAI	954-776-2222 954-776-4446	CONTACT NAME: PHONE (A/C, No, Ext): FAX (A/C, No): E-MAIL: ADDRESS:
INSURED Calvin, Giordano & Associates, Inc. Attn: Dennis Giordano 1800 Eller Drive #600 Ft. Lauderdale, FL 33316	INSURER(S) AFFORDING COVERAGE	
	INSURER A : Hartford Casualty Ins. Co	NAIC # 29424
	INSURER B : Hartford Ins Co of Midwest	37478
	INSURER C : American Guar & Liab Ins Co	26247
	INSURER D : Hartford Ins. Co. of the S.E.	38261
	INSURER E : Continental Casualty Company	20443
	INSURER F :	

COVERAGES CERTIFICATE NUMBER: REVISION NUMBER:

THIS IS TO CERTIFY THAT THE POLICIES OF INSURANCE LISTED BELOW HAVE BEEN ISSUED TO THE INSURED NAMED ABOVE FOR THE POLICY PERIOD INDICATED. NOTWITHSTANDING ANY REQUIREMENT, TERM OR CONDITION OF ANY CONTRACT OR OTHER DOCUMENT WITH RESPECT TO WHICH THIS CERTIFICATE MAY BE ISSUED OR MAY PERTAIN, THE INSURANCE AFFORDED BY THE POLICIES DESCRIBED HEREIN IS SUBJECT TO ALL THE TERMS, EXCLUSIONS AND CONDITIONS OF SUCH POLICIES. LIMITS SHOWN MAY HAVE BEEN REDUCED BY PAID CLAIMS.

INSR LTR	TYPE OF INSURANCE	ADDL SUBR INSR WVD	POLICY NUMBER	POLICY EFF (MM/DD/YYYY)	POLICY EXP (MM/DD/YYYY)	LIMITS
A	<input checked="" type="checkbox"/> GENERAL LIABILITY <input checked="" type="checkbox"/> COMMERCIAL GENERAL LIABILITY <input type="checkbox"/> CLAIMS-MADE <input checked="" type="checkbox"/> OCCUR  GEN'L AGGREGATE LIMIT APPLIES PER: <input type="checkbox"/> POLICY <input checked="" type="checkbox"/> PROJECT <input type="checkbox"/> LOC		21UUNLK3645	01/01/14	01/01/15	EACH OCCURRENCE \$ 1,000,000 DAMAGE TO RENTED PREMISES (Ea occurrence) \$ 300,000 MED EXP (Any one person) \$ 10,000 PERSONAL & ADV INJURY \$ 1,000,000 GENERAL AGGREGATE \$ 2,000,000 PRODUCTS - COMP/OP AGG \$ 2,000,000 \$
B	<input checked="" type="checkbox"/> AUTOMOBILE LIABILITY <input checked="" type="checkbox"/> ANY AUTO <input checked="" type="checkbox"/> ALL OWNED AUTOS <input checked="" type="checkbox"/> HIRED AUTOS <input type="checkbox"/> SCHEDULED AUTOS <input checked="" type="checkbox"/> NON-OWNED AUTOS		21UENJB7000	01/01/14	01/01/15	COMBINED SINGLE LIMIT (Ea accident) \$ 1,000,000 BODILY INJURY (Per person) \$ BODILY INJURY (Per accident) \$ PROPERTY DAMAGE (Per accident) \$ \$
C	<input checked="" type="checkbox"/> UMBRELLA LIAB <input checked="" type="checkbox"/> OCCUR <input type="checkbox"/> EXCESS LIAB <input type="checkbox"/> CLAIMS-MADE DED <input checked="" type="checkbox"/> RETENTION \$ 0		AUC594612805	01/01/14	01/01/15	EACH OCCURRENCE \$ 10,000,000 AGGREGATE \$ 10,000,000 \$
D	WORKERS COMPENSATION AND EMPLOYERS' LIABILITY ANY PROPRIETOR/PARTNER/EXECUTIVE OFFICER/MEMBER EXCLUDED? (Mandatory in NH) If yes, describe under DESCRIPTION OF OPERATIONS below Y/N <input checked="" type="checkbox"/> N/A		21WBNO3209	01/01/14	01/01/15	<input checked="" type="checkbox"/> WC STATUTORY LIMITS <input type="checkbox"/> OTHER E.L. EACH ACCIDENT \$ 1,000,000 E.L. DISEASE - EA EMPLOYEE \$ 1,000,000 E.L. DISEASE - POLICY LIMIT \$ 1,000,000
E	Professional Liab Claim Made		AEH288358005 RETENTION: \$200,000	08/27/13	08/27/14	Per Claim 2,000,000 Aggregate 2,000,000

DESCRIPTION OF OPERATIONS / LOCATIONS / VEHICLES (Attach ACORD 101, Additional Remarks Schedule, if more space is required)  
For bid purposes only

CERTIFICATE HOLDER	CANCELLATION
CALVING  Calvin, Giordano & Associates, Inc. 1800 Eller Drive #600 Ft Lauderdale, FL 33316	SHOULD ANY OF THE ABOVE DESCRIBED POLICIES BE CANCELLED BEFORE THE EXPIRATION DATE THEREOF, NOTICE WILL BE DELIVERED IN ACCORDANCE WITH THE POLICY PROVISIONS.  AUTHORIZED REPRESENTATIVE 



## SECTION 10 JOINT VENTURES

Not applicable.



## SECTION 11 SUB-CONSULTANTS

**DCS Inc.** **Dickey Consulting Services, Inc. (DCS)** is a project management, communications consulting, business and economic development, and government relations firm founded in 1995. The organization and its associates provide services to public and private enterprises, coordinating, implementing and promoting projects related to economic and community development, business development, government relations, public relations, public involvement, and other marketing initiatives. DCS provides professional services for numerous governmental entities including Florida Department of Transportation, Broward County, City of Fort Lauderdale, and City of Pompano Beach.

Sheryl Dickey, founder and owner, has more than 30 years of experience and a proven record of success in these areas. She and her staff bring a high level of energy and the ability to participate in a leadership or team member role to ensure successful completion of a project. DCS also provides staffing for communications assistance, documents control, Disadvantaged Business Enterprise (DBE) coordination, contract administration, civil-CAD construction inspections, invoicing, and accounting. The firm also provides administrative support for budgeting, planning, management, and purchasing.



**Lakdas/Yohalem Engineering, Inc. (LYE)** is a medium sized professional Civil, Structural, Marine & Bridge Engineering firm that has been in practice in South Florida since 1965 and working at the Port since 1980. LYE, is a Certified Business by the State of Florida, Palm Beach and Broward County, and Department of Transportation. Their Engineering services include the following:

### STRUCTURAL

- Structural Condition Survey of existing buildings and bridge structures
- Structural Design for new and addition to existing building structures

- Port & Airport Terminal and related building facilities
- Petroleum Facilities, Terminals and Tanks
- Parks and Recreational Projects
- Feasibility Design and Compile Reports
- Damage Assessment and Failure Evaluation of structures
- Water and Wastewater Treatment plant structural design
- Piers, Bulkhead Walls, Marinas, Seawalls and Dock Structures
- Value-Engineering and constructability review of construction documents prepared by others
- On-site Threshold and Special Inspection services during construction
- Construction and Project Management



**RADISE International, LC** is a premier, Florida based, minority and small business (DBE, CBE, CDBE, SBE, S/WBE, ACDBE) Geotechnical Engineering and Construction Materials Testing and Inspection Firm (CEI) that has been in business for over 15 years. They have a staff of 46 engineers, field inspectors and support staff, including 6 PE's, 5 EI's and 6 graduate Civil Engineers, with their senior staff having over 200 years of combined Geotechnical Engineering and Materials Testing and Inspection experience. RADISE performs all drilling in-house with 2 drill rigs. They have significant experience and a solid background in working with both the Public and Private Sectors in South Florida, with continuing service contracts with Cities, Counties, School Districts, and clients like the FDOT, SFWMD, and USACE on operations that run 24/7. RADISE has 2 FDOT Certified Laboratories (Broward & Palm Beach Counties), and is also an FDOT Construction Testing Qualification Program (CTQP) Training Provider. RADISE has no litigation issues and a spotless safety record since inception. They also have offices in Miami, Ft. Lauderdale, and Orlando.

Geotechnical Engineering and Construction Materials Testing and Inspection Firm (CEI) that has been in business for over 15 years. They have a staff of 46 engineers, field inspectors and support staff, including 6 PE's, 5 EI's and 6 graduate Civil Engineers, with their senior staff having over 200 years of combined Geotechnical Engineering and Materials Testing and Inspection experience. RADISE performs all drilling in-house with 2 drill rigs. They have significant experience and a solid background in working with both the Public and Private Sectors in South Florida, with continuing service contracts with Cities, Counties, School Districts, and clients like the FDOT, SFWMD, and USACE on operations that run 24/7. RADISE has 2 FDOT Certified Laboratories (Broward & Palm Beach Counties), and is also an FDOT Construction Testing Qualification Program (CTQP) Training Provider. RADISE has no litigation issues and a spotless safety record since inception. They also have offices in Miami, Ft. Lauderdale, and Orlando.





## SECTION 12 NON-COLLUSION STATEMENT / LOCAL BUSINESS STATEMENT

See attached

**NON-COLLUSION STATEMENT:**

By signing this offer, the vendor/contractor certifies that this offer is made independently and *free* from collusion. Vendor shall disclose below any City of Fort Lauderdale, FL officer or employee, or any relative of any such officer or employee who is an officer or director of, or has a material interest in, the vendor's business, who is in a position to influence this procurement.

Any City of Fort Lauderdale, FL officer or employee who has any input into the writing of specifications or requirements, solicitation of offers, decision to award, evaluation of offers, or any other activity pertinent to this procurement is presumed, for purposes hereof, to be in a position to influence this procurement.

For purposes hereof, a person has a material interest if they directly or indirectly own more than 5 percent of the total assets or capital stock of any business entity, or if they otherwise stand to personally gain if the contract is awarded to this vendor.

In accordance with City of Fort Lauderdale, FL Policy and Standards Manual, 6.10.8.3,

**3.3. City employees may not contract with the City through any corporation or business entity in which they or their immediate family members hold a controlling financial interest (e.g. ownership of five (5) percent or more).**

3.4. Immediate family members (spouse, parents and children) are also prohibited from contracting with the City subject to the same general rules.

**Failure of a vendor to disclose any relationship described herein shall be reason for debarment in accordance with the provisions of the City Procurement Code.**

**NAME**

**RELATIONSHIPS**

\_\_\_\_\_  
\_\_\_\_\_

\_\_\_\_\_  
\_\_\_\_\_  
\_\_\_\_\_  
\_\_\_\_\_

**In the event the vendor does not indicate any names, the City shall interpret this to mean that the vendor has indicated that no such relationships exist.**

**LOCAL BUSINESS PREFERENCE CERTIFICATION STATEMENT**

The Business identified below certifies that it qualifies for the local BUSINESS preference classification as indicated herein, and further certifies and agrees that it will re-affirm it's local preference classification annually no later than thirty (30) calendar days prior to the anniversary of the date of a contract awarded pursuant to this ITB. Violation of the foregoing provision may result in contract termination.

(1) \_\_\_\_\_  
Business Name is a **Class A** Business as defined in City of Fort Lauderdale Ordinance No. C-12-04, Sec.2-199.2. A copy of the City of Fort Lauderdale current year Business Tax Receipt and a complete list of full-time employees and their addresses shall be provided within 10 calendar days of a formal request by the City.

(2) \_\_\_\_\_  
Business Name is a **Class B** Business as defined in the City of Fort Lauderdale Ordinance No. C-12-04, Sec.2-199.2. A copy of the Business Tax Receipt or a complete list of full-time employees and their addresses shall be provided within 10 calendar days of a formal request by the City.

(3) Calvin, Giordano & Associates, Inc.  
\_\_\_\_\_ Business Name is a **Class C** Business as defined in the City of Fort Lauderdale Ordinance No. C-12-04, Sec.2-199.2. A copy of the Broward County Business Tax Receipt shall be provided within 10 calendar days of a formal request by the City.

(4) \_\_\_\_\_  
Business Name requests a **Conditional Class A** classification as defined in the City of Fort Lauderdale Ordinance No. C-12-04, Sec.2-199.2. Written certification of intent shall be provided within 10 calendar days of a formal request by the City.

(5) \_\_\_\_\_  
Business Name requests a **Conditional Class B** classification as defined in the City of Fort Lauderdale Ordinance No. C-12-04, Sec.2-199.2. Written certification of intent shall be provided within 10 calendar days of a formal request by the City.

(6) \_\_\_\_\_  
Business Name is considered a **Class D** Business as defined in the City of Fort Lauderdale Ordinance No. C-12-04, Sec.2-199.2. and does not qualify for Local Preference consideration.

BIDDER'S COMPANY: Calvin, Giordano & Associates, Inc. \_\_\_\_\_

AUTHORIZED \_\_\_\_\_ COMPANY \_\_\_\_\_ PERSON:  
Dennis J. Giordano, President \_\_\_\_\_ March 20, 2014  
NAME SIGNATURE DATE

