




UDP-EV23010 - 650 N. Andrews - 650 N. Andrews Avenue

LEGEND

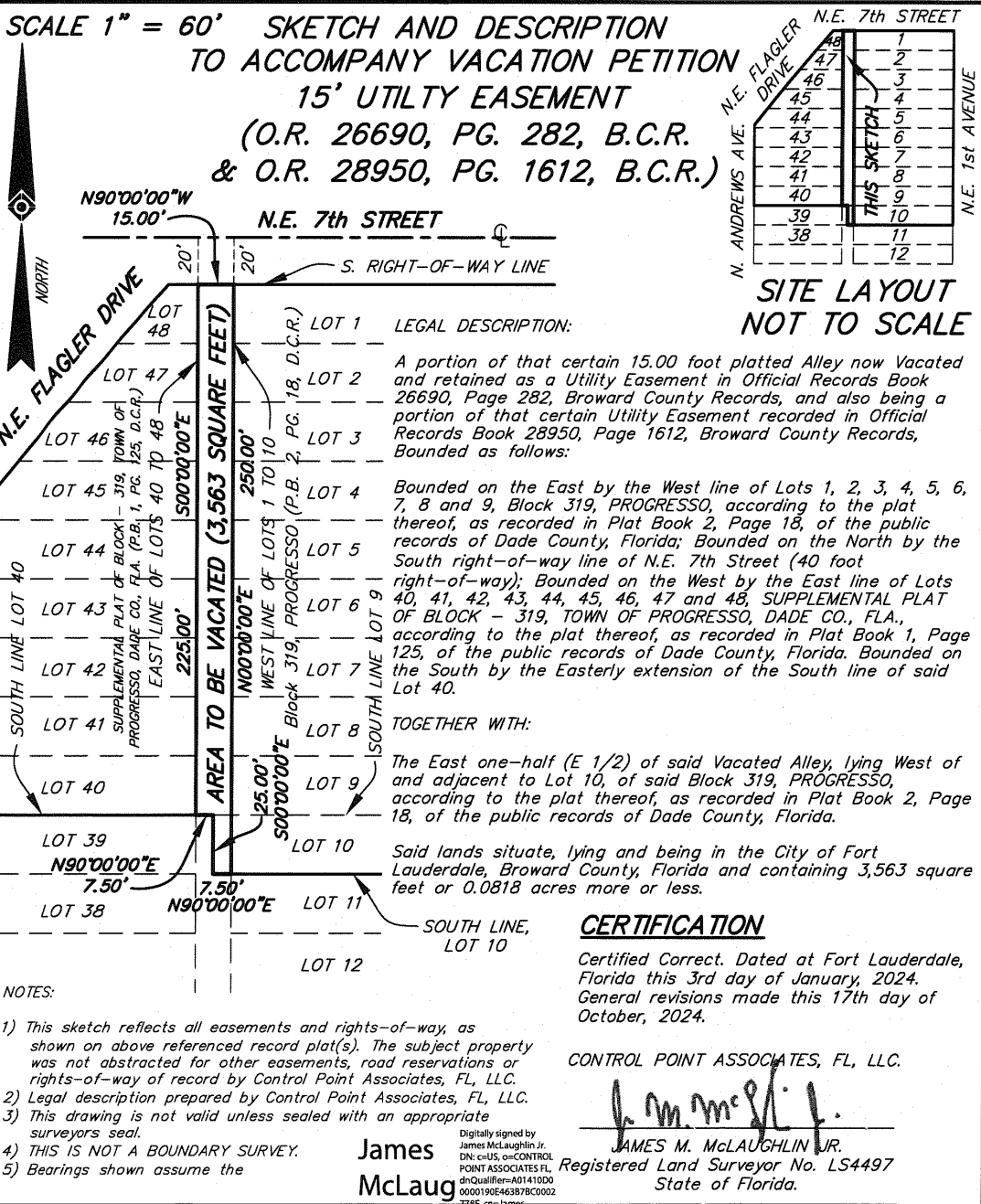
 Subject Site



CONTROL POINT ASSOCIATES, FL, LLC.
LB #8137

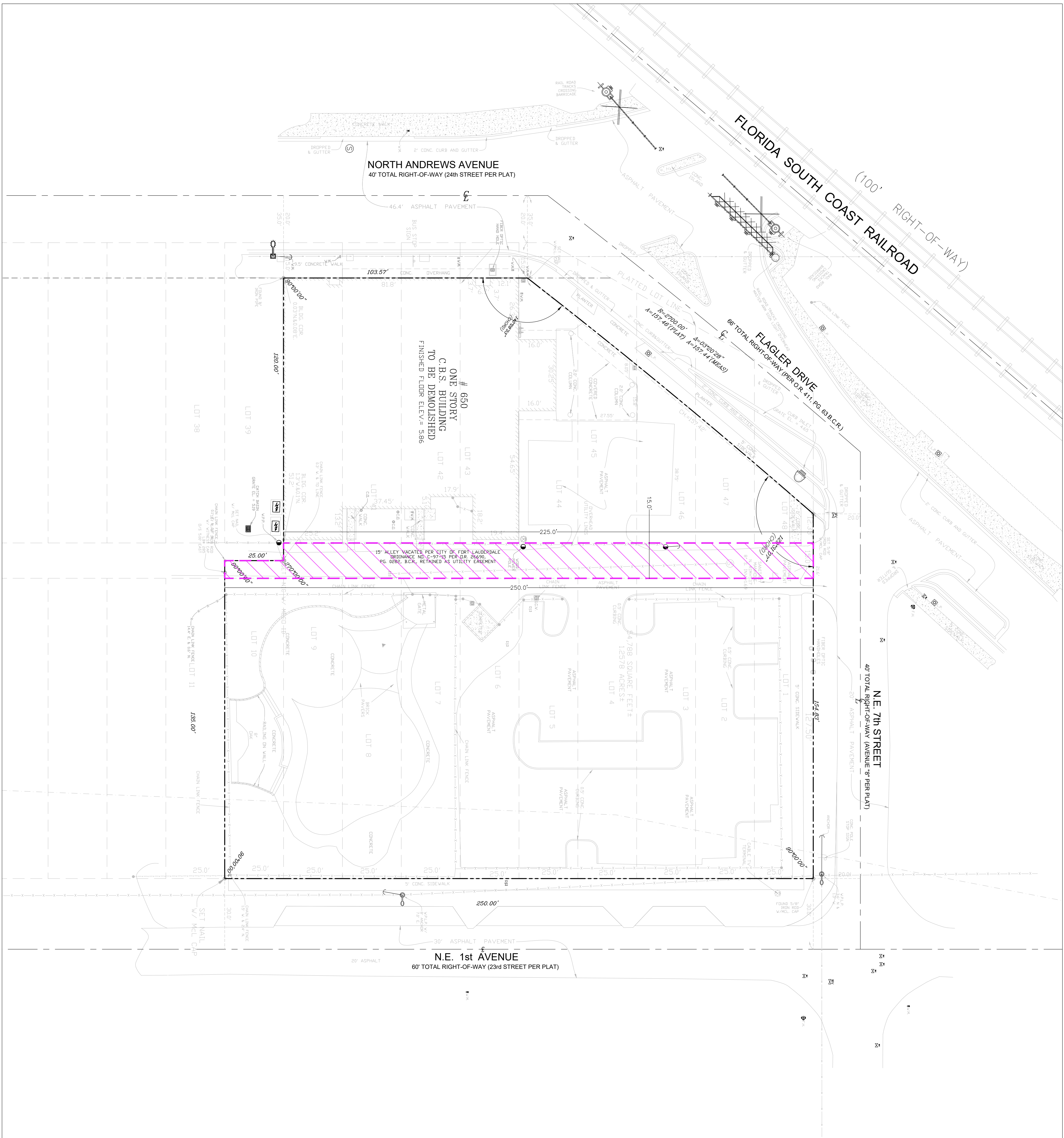
TRADITIONAL METHODS | MODERN APPROACHES
 1901 W. CYPRESS CREEK ROAD #501, FORT LAUDERDALE, FLORIDA 33309
 PHONE: (954) 763-7611 * EMAIL: DDONAHOE@CPASURVEY.COM

M.J.O.K.

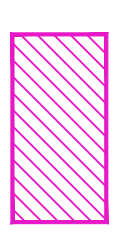


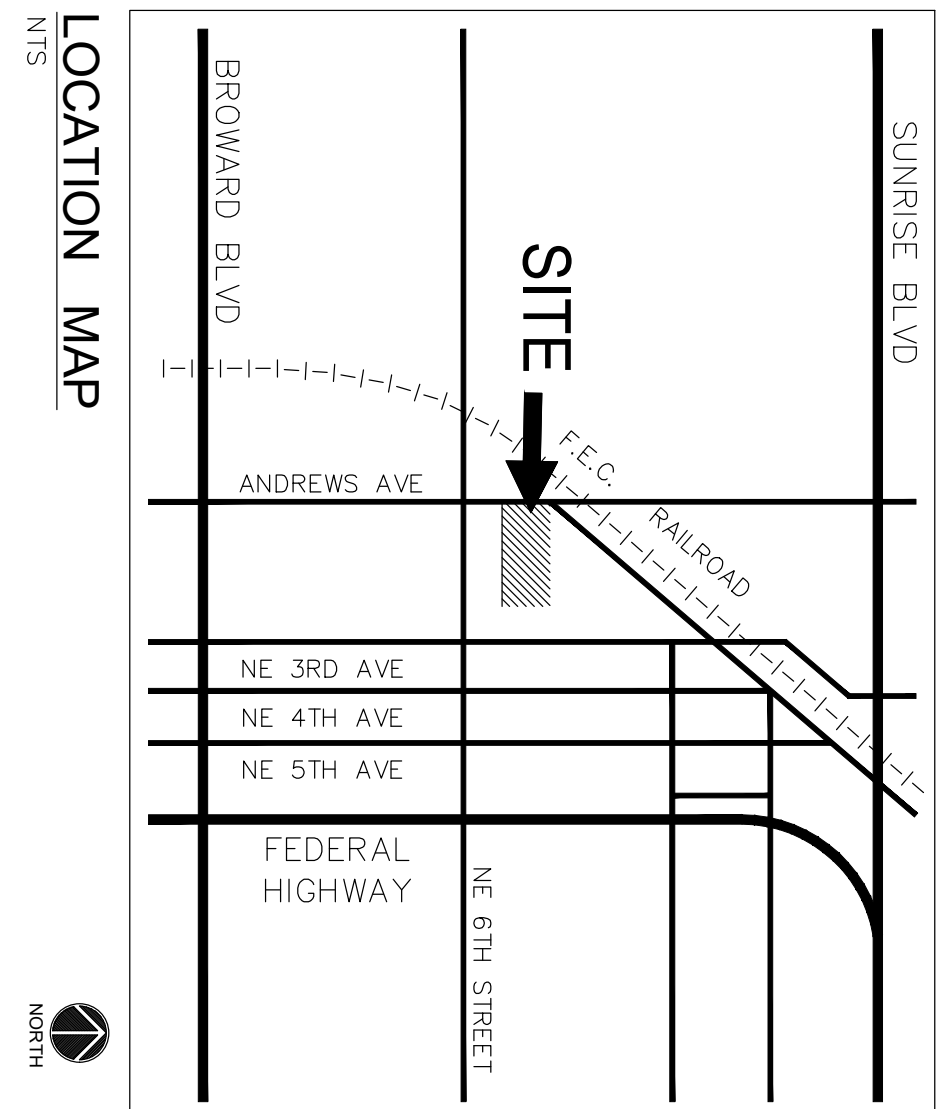
FIELD BOOK NO. _____
 JOB ORDER NO. 15-230614-00 _____

DRAWN BY: JMMjr
 CHECKED BY: _____
 C: \JMMjr\2024\230614-00 (SKETCH)



LEGEND:

 15' UTILITY EASEMENT TO BE VACATED

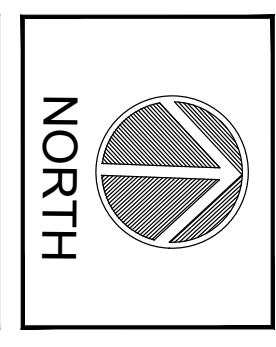


Scale:	Date:
1" = 20'	12/13/23
Job No.:	Proj. No.:
22-1728.00	12/13/23
Drawn by:	Sheet No.:
CA	C0.0
Proj. Mgr.:	Appr. by:
DMK	DMK
Sheet:	of 1

DRG DOCUMENTS

SEAL

Revisions	
1	
2	
3	
4	
5	
6	
7	
8	
9	
10	



Job Title

**650 N ANDREWS AVE
UTILITY EASEMENT VACATION**

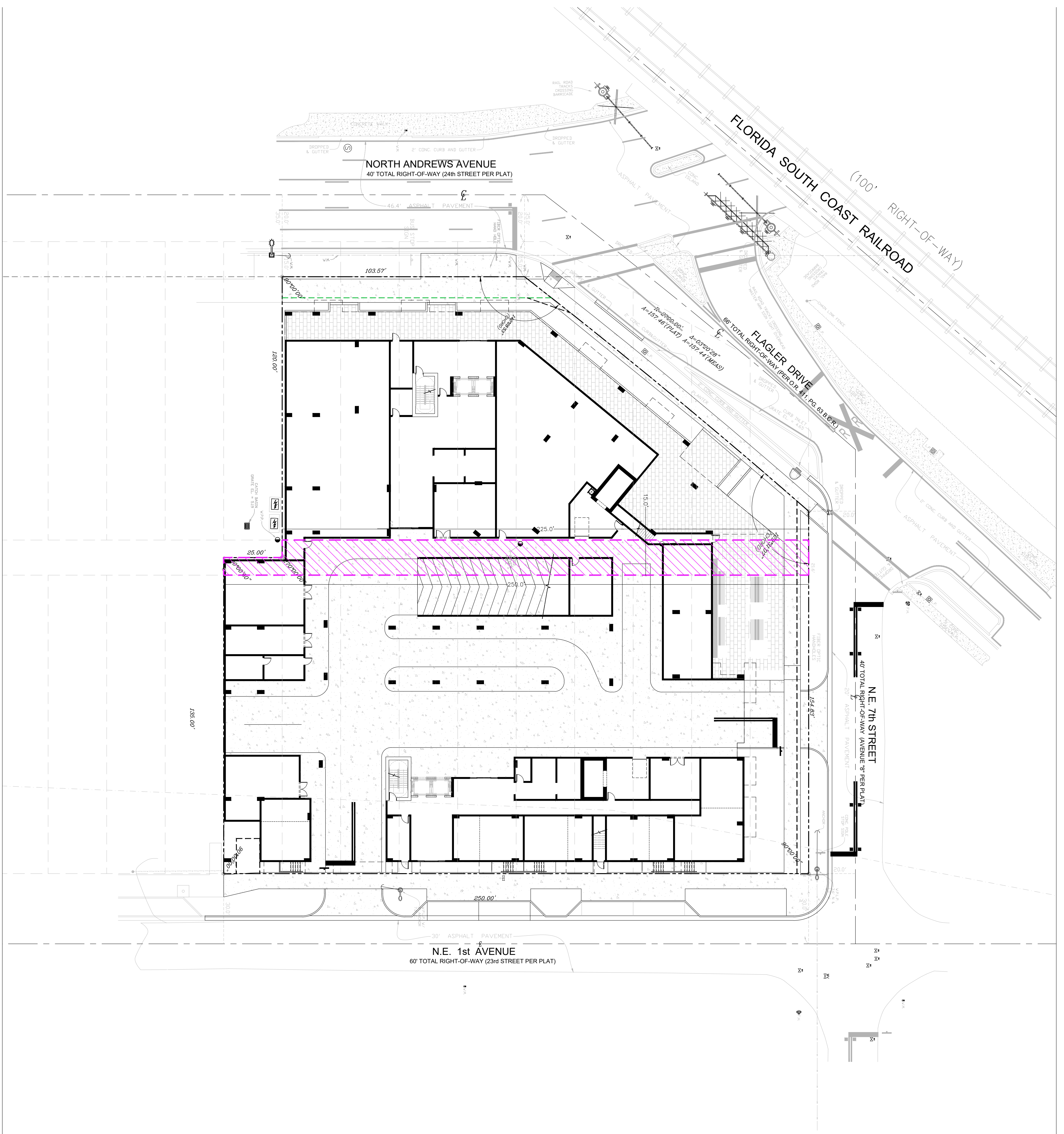
FORT LAUDERDALE, FLORIDA

Sheet Title

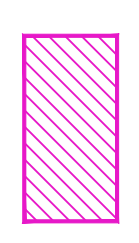
**UTILITY EASEMENT
VACATION EXHIBIT**

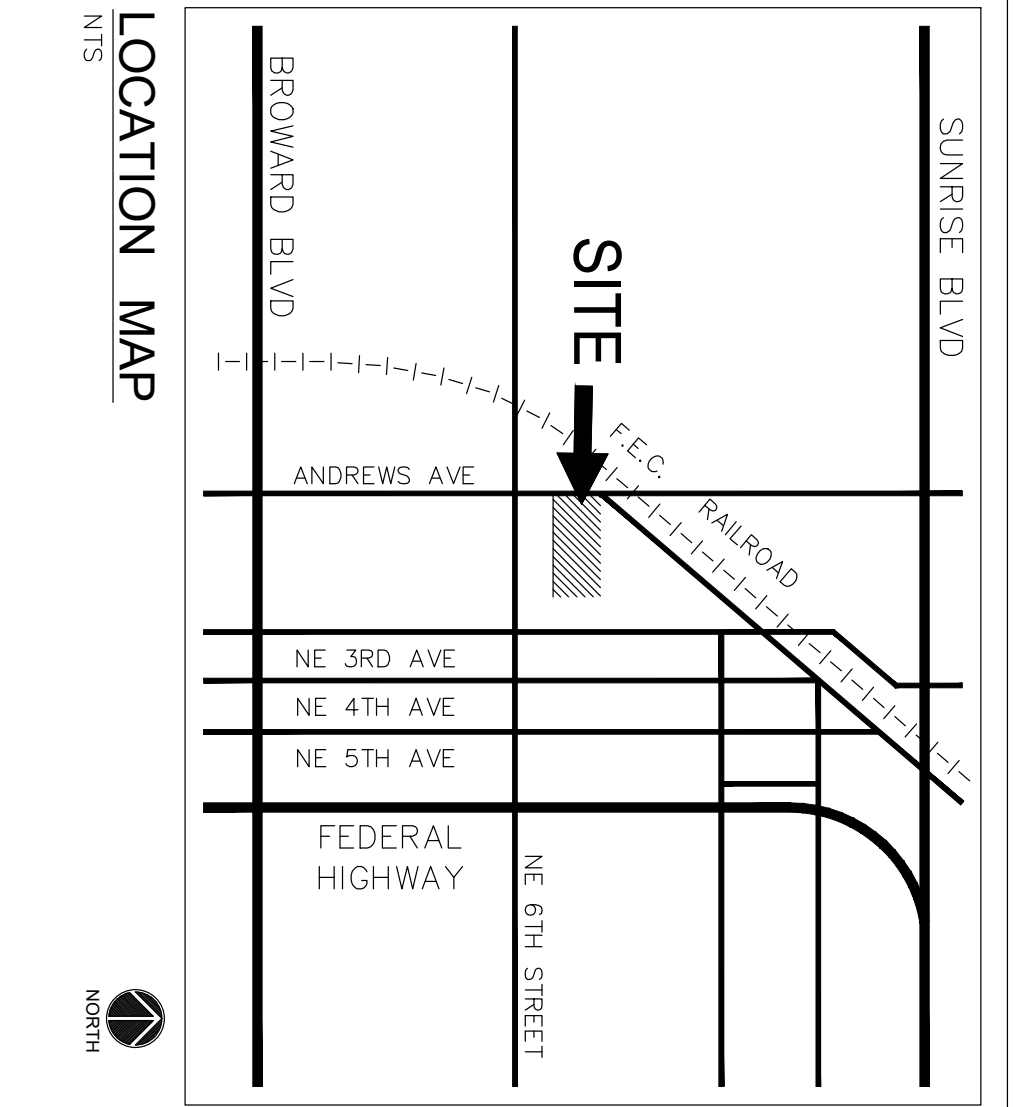
FLYNN ENGINEERING

241 COMMERCIAL BLVD., LAUDERDALE-BY-THE-SEA, FL 33308
PHONE: (954) 522-1004 | WWW.FLYNNENGINEERING.COM
EB# 6578



LEGEND:

 15' UTILITY EASEMENT TO BE VACATED



Scale	Date
1"=20'	12/15/23
DATE PLOTTED	DATE PLOTTED
22-1728.00	12/15/23
CA	Sheet No.
Proj. Mgr.	C0.1
Appr. By	d 1
BMK	

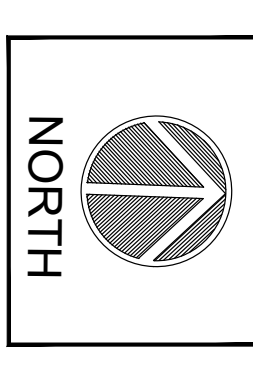
SEAL

DRC

DOCUMENTS

Phase:

Δ	
Δ	
Δ	
Δ	
Δ	
Δ	




Job Title

**650 N ANDREWS AVE
UTILITY EASEMENT VACATION**

FORT LAUDERDALE, FLORIDA

Sheet Title

**CONCEPTUAL
SITE PLAN**



241 COMMERCIAL BLVD., LAUDERDALE-BY-THE-SEA, FL 33308
PHONE: (954) 522-1004 | WWW.FLYNNENGINEERING.COM
EB# 6578