

Las Olas Triathlon – Turn by Turn

The bike course starts at Las Olas Oceanside Park on Las Olas Blvd.

It goes north on S. Fort Lauderdale Beach Blvd.,

u-turns just before Flamingo Avenue,

then returns to Las Olas Oceanside Park.

The bike course uses all northbound lanes from Las Olas Blvd to N Atlantic Blvd.,

then uses the middle 2 lanes from N. Atlantic Blvd. to Flamingo Avenue.

The run course starts at Las Olas Oceanside Park,

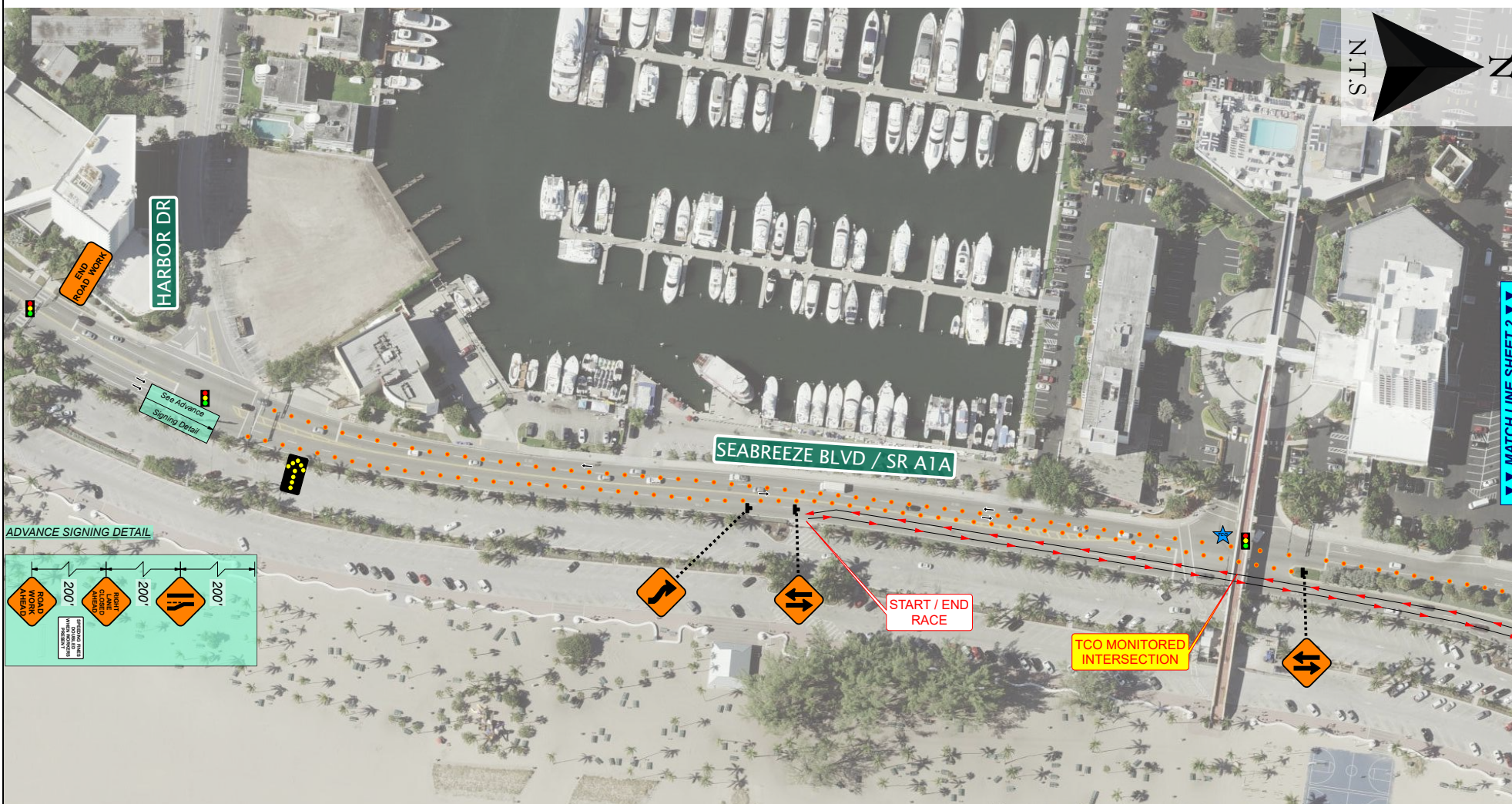
crosses S. Fort Lauderdale Beach Blvd at the southern end of the park,

turns north on the sidewalk for 1.55 miles,

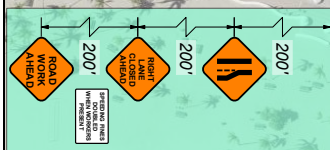
u-turns just north of Sunrise Blvd,

then returns to Las Olas Oceanside Park.

The run stays on the sidewalk the entire time.



ADVANCE SIGNING DETAIL



FDOT This Certifies that **HAROLD LARA**
 Has Completed a Florida Department of Transportation Approved
 Temporary Traffic Control (TTC) Advanced Course.
 Date Expires: 05/20/2024 Certificate # 62437
 Instructor: Juan Morales FDOT Provider # 37

ATSSA
 Phone: 540-368-1701
 15 Riverside Parkway Ste.100
 Fredericksburg, VA,
 www.atssa.com
 donna.clark@atssa.com

ATSSA
 SAFER ROADS SAVE LIVES

DISTANCE BETWEEN SIGNS				Table I Device Spacing				Table II Buffer Space and Taper Length			
Speed	Spacing (ft.)			Speed (mph)	Max. Distance Between Device (ft.)			Speed (mph)	Buffer Space		Taper Length (ft.)
	A	B	C		Core of or Tapered Barriers or Vertical Posts or Signs	Type I or Type II Barriers or Vertical Posts or Signs	Dist. (ft.)		Dist. (ft.)	Notes	
40 mph or less	200	200	200	25	155	125	30	425	600		
45 mph	350	350	350	25	25	25	30	55	495	650	
50 mph	500	500	500	35	250	225	60	60	570	720	
55 mph or greater	2640	1640	1000	35 to 45	25	50	50	65	645	780	
				50 to 75	25	50	50	70	730	840	

General Traffic Plan (MOT) Notes:

- Copy of approved 11 x 17 (TTC) MOT drawing to be maintained onsite by contractor at all times.
- No changes to TCP/MOT drawing without prior consent of the approving government agency and All American Barricades.
- Access shall be given to local residents, public transportation and emergency response vehicles.
- Accommodations to be made for Pedestrian traffic should the work be in conflict with pathways. Refer to the FY2020-21 FDOT Standard Plans Index 102-660 for specifications.
- All MOT equipment to conform to the latest Manual On Uniform Traffic Control Devices (MUTCD), FDOT, APL with respect to approving agency permit provisions.
- Field conditions to be considered when placing MOT devices.
- TCP/MOT Plans NOT TO SCALE. Refer to FDOT Index 102-600 Series Distance Charts for device spacing and placement information.
- Posted Regulatory Speed Limit to be considered for device placement and distances.
- MOT device(s) placement on plans are an approximate and may be adjusted to suit existing field conditions.
- PLANS NOT TO SCALE.
- All American Barricades does not warrant the traffic control setup by others. The setup must be handled by personnel certified and licensed to handle traffic control.

Project Information			Company		
MULTI RACE					
Revisions					
No.	DATE	BY	DESCRIPTION		

Legend

- Barrel
- Traffic Control Officer
- Water Barrier
- Lane Identification + Direction of Traffic
- Type III Barricades

ALL AMERICAN BARRICADES, CORP.
 ATSSA CERTIFICATE # 62437
 2300 SW 41ST AVENUE
 FT. LAUDERDALE, FL 33317
 1-888-4 SAFETY (888-472-3389)

Designed by : HAROLD LARA
 www.barricades.com
 email: harold@barricades.com

Date: 02/03/21 Sheet : 1



FDOT This Certifies that **HAROLD LARA**
 Has Completed a Florida Department of Transportation Approved
 Temporary Traffic Control (TTC) Advanced Course.
 Date Expires: 05/20/2024 Certificate # 62437
 Instructor: Juan Morales FDOT Provider # 37

ATSSA
 Phone: 540-368-1701
 15 Riverside Parkway Ste.100
 Fredericksburg, VA,
 www.atssa.com
 donna.clark@atssa.com

SAFER ROADS SAVE LIVES

DISTANCE BETWEEN SIGNS				Table I Device Spacing				Table II Buffer Space and Taper Length			
Speed	Spacing (ft.)			Speed (mph)	Type I/II Spacing			Speed (mph)	Buffer Space		Taper Length (ft.)
	A	B	C		Core of Taper	Spacings	Notes		Dist. (ft.)	Notes	
40 mph or less	200	200	200	25	25	25	30	250	150	55	495
45 mph	350	350	350	25	30	30	30	350	225	60	570
50 mph	500	500	500	25 to 45	30	30	30	400	300	65	645
55 mph or greater	2640	1640	1000	30 to 75	30	50	100	450	360	70	730

General Traffic Plan (MOT) Notes:

- Copy of approved 11 x 17 (TCP) MOT drawing to be maintained onsite by contractor at all times.
- No changes to TCP/MOT drawing without prior consent of the approving government agency and All American Barricades.
- Access shall be given to local residents, public transportation and emergency response vehicles.
- Accommodations to be made for Pedestrian traffic should the work be in conflict with pathways. Refer to the FY2020-21 FDOT Standard Plans Index 102-660 for specifications.
- All MOT equipment to conform to the latest Manual On Uniform Traffic Control Devices (MUTCD), FDOT, APL with respect to approving agency permit provisions.
- Field conditions to be considered when placing MOT devices.
- TCP/MOT Plans NOT TO SCALE. Refer to FDOT Index 102-600 Series Distance Charts for device spacing and placement information.
- Posted Regulatory Speed Limit to be considered for device placement and distances.
- MOT device(s) placement on plans are an approximate and may be adjusted to suit existing field conditions.
- PLANS NOT TO SCALE.
- All American Barricades does not warrant the traffic control setup by others. The setup must be handled by personnel certified and licensed to handle traffic control.

Project Information			Company		
MULTI RACE			ALL AMERICAN BARRICADES, CORP.		
Revisions			ATSSA CERTIFICATE # 62437		
No.	DATE	BY	DESCRIPTION		

Legend

- Barrel
- Traffic Control Officer
- Water Barrier
- Lane Identification + Direction of Traffic
- Type III Barricades

ALL AMERICAN BARRICADES, CORP.
 2300 SW 41ST AVENUE
 FT. LAUDERDALE, FL 33317
 1-888-4 SAFETY (888-472-3389)

Designed by : HAROLD LARA
 www.barricades.com
 email: harold@barricades.com

Date: 02/03/21 Sheet : 2



FDOT This Certifies that **HAROLD LARA**
 Has Completed a Florida Department of Transportation Approved
 Temporary Traffic Control (TTC) Advanced Course.
 Date Expires: 05/20/2024 Certificate # 62437
 Instructor: Juan Morales FDOT Provider # 37

ATSSA
 Phone: 540-368-1701
 15 Riverside Parkway Ste.100
 Fredericksburg, VA,
 www.atssa.com
 donna.clark@atssa.com

SAFER ROADS SAVE LIVES

DISTANCE BETWEEN SIGNS				Table I Device Spacing				Table II Buffer Space and Taper Length			
Speed	Spacing (ft.)			Speed (mph)	Max. Distance Between Devices (ft.)			Speed (mph)	Buffer Space		Taper Length (ft.)
	A	B	C		Core of Taper	Barrel or Vertical	Barrel or Vertical		Space	Length	
45 mph or less	200	200	200	25	155	125	30	425	600	75	1500
45 mph	350	350	350	25	250	150	30	425	600	75	1500
50 mph	500	500	500	25	350	225	30	570	720	75	1800
55 mph or greater	2640	1640	1000	35 to 75	50	50	50	645	780	75	2400

General Traffic Plan (MOT) Notes:

- Copy of approved 11 x 17 (TCP) MOT drawing to be maintained onsite by contractor at all times.
- No changes to TCP/MOT drawing without prior consent of the approving government agency and All American Barricades.
- Access shall be given to local residents, public transportation and emergency response vehicles.
- Accommodations to be made for Pedestrian traffic should the work be in conflict with pathways. Refer to the FY2020-21 FDOT Standard Plans Index 102-690 for specifications.
- All MOT equipment to conform to the latest Manual On Uniform Traffic Control Devices (MUTCD), FDOT, APL with respect to approving agency permit provisions.
- Field conditions to be considered when placing MOT devices.
- TCP/MOT Plans NOT TO SCALE. Refer to FDOT Index 102-690 Series Distance Charts for device spacing and placement information.
- Posted Regulatory Speed Limit to be considered for device placement and distances.
- MOT device(s) placement on plans are an approximate and may be adjusted to suit existing field conditions.
- PLANS NOT TO SCALE.
- All American Barricades does not warrant the traffic control setup by others. The setup must be handled by personnel certified and licensed to handle traffic control.

Project Information			Company		
MULTI RACE			ALL AMERICAN BARRICADES, CORP. ATSSA CERTIFICATE # 62437		
Revisions			Legend		
No.	DATE	BY	Legend		
			Barrel	Lane Identification + Direction of Traffic	
			Traffic Control Officer	Type III Barricades	
			Water Barrier		

ALL AMERICAN BARRICADES, CORP.
 ATSSA CERTIFICATE # 62437
 2300 SW 41ST AVENUE
 FT. LAUDERDALE, FL 33317
 1-888-4 SAFETY (888-472-3389)

Designed by : HAROLD LARA
 www.barricades.com
 email: harold@barricades.com

Date: 02/03/21 Sheet : 3



FDOT This Certifies that **HAROLD LARA**
 Has Completed a Florida Department of Transportation Approved
 Temporary Traffic Control (TTC) Advanced Course.
 Date Expires: 05/20/2024 Certificate # 62437
 Instructor: Juan Morales FDOT Provider # 37

ATSSA
 15 Riverside Parkway Ste.100
 Fredericksburg, VA
 www.atssa.com
 donna.clark@atssa.com

SAFER ROADS SAVE LIVES

DISTANCE BETWEEN SIGNS				Table I Device Spacing				Table II Buffer Space and Taper Length				
Speed	Spacing (ft.)			Speed (mph)	Max. Distance between Devices (ft.)			Speed (mph)	Buffer Space		Taper Length	
	A	B	C		Core or Taper Markers	Type I/II Spacing	Notes		Dist. (ft.)	Notes	Dist. (ft.)	Notes
40 mph or less	200	200	200	25	155	125	30	425	600	L = WS		
45 mph	350	350	350	25	25	30	30	55	495	550		
50 mph	500	500	500	35	350	225	60	60	570	720		
55 mph or greater	2640	1640	1000	35 to 75	25	50	50	45	350	540		

General Traffic Plan (MOT) Notes:

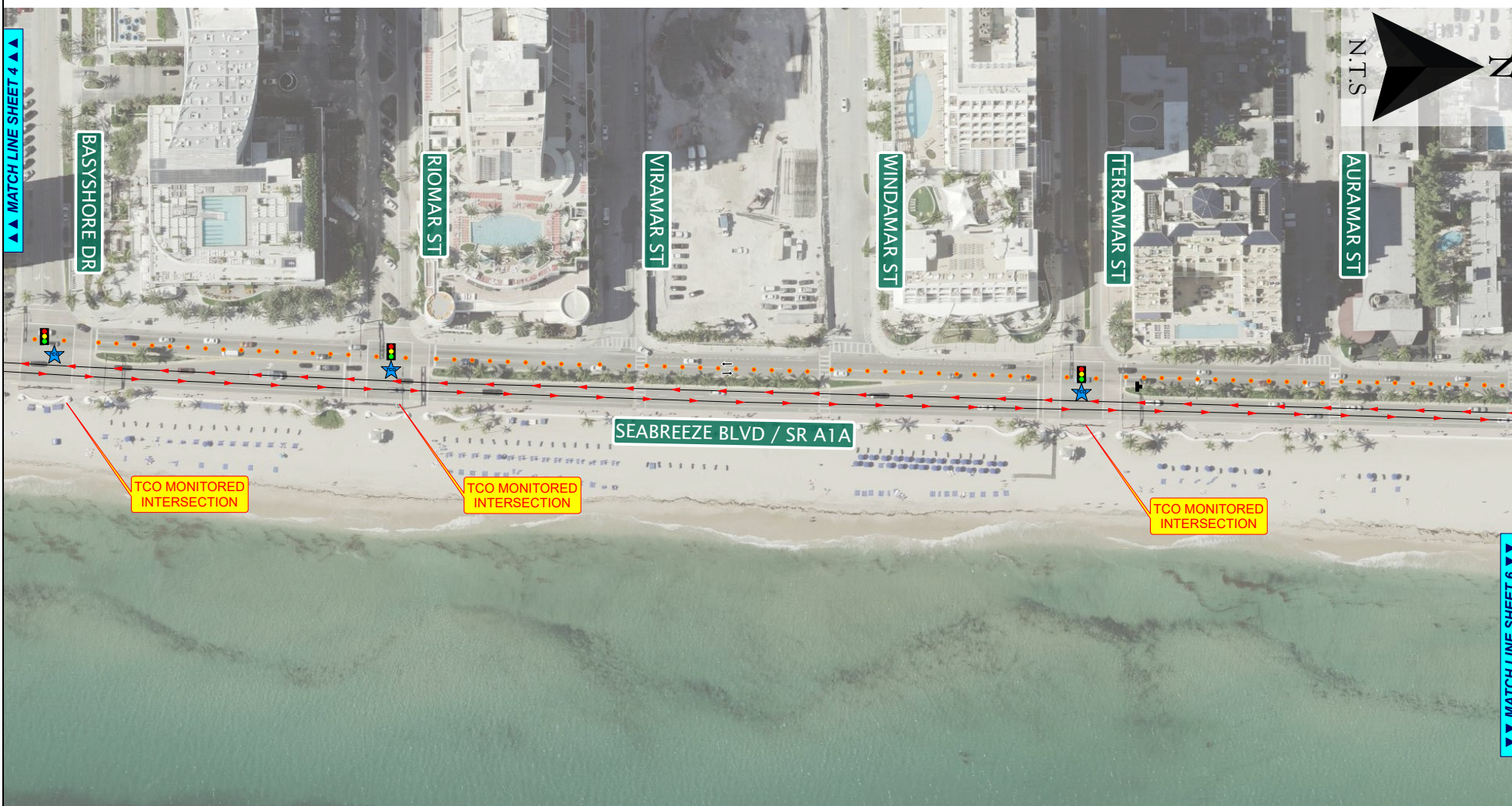
- Copy of approved 11 x 17 (TCP) MOT drawing to be maintained onsite by contractor at all times.
- No charges to TCP/MOT drawing without prior consent of the approving government agency and All American Barricades.
- Access shall be given to local residents, public transportation and emergency response vehicles.
- Accommodations to be made for Pedestrian traffic should the work be in conflict with pathways (Refer to the FY2020-21 FDOT Standard Plans Index 102-660 for specifications).
- All MOT equipment to conform to the latest Manual On Uniform Traffic Control Devices (MUTCD), FDOT, APL with respect to approving agency permit provisions.
- Field conditions to be considered when placing MOT devices.
- TCP/MOT Plan NOT TO SCALE. Refer to FDOT Index 102-600 Series Distance Charts for device spacing and placement information.
- Posted Regulatory Speed Limit to be considered for device placement and distances.
- MOT device(s) placement on plans are an approximate and may be adjusted to suit existing field conditions.
- PLANS NOT TO SCALE.
- All American Barricades does not warrant the traffic control setup by others. The setup must be handled by personnel certified and licensed to handle traffic control.

Project Information			Company		
MULTI RACE					
Revisions			Legend		
No.	DATE	BY	Legend		
			● Barrel	← Lane Identification + Direction of Traffic	
			★ Traffic Control Officer	■ Type III Barricades	
			! Water Barrier		

ALL AMERICAN BARRICADES, CORP.
 ATSSA CERTIFICATE # 62437
 2300 SW 41ST AVENUE
 FT. LAUDERDALE, FL 33317
 1-888-4 SAFETY (888-472-3389)

Designed by: HAROLD LARA
 www.barricades.com
 email: harold@barricades.com

Date: 02/03/21 Sheet : 4



FDOT This Certifies that **HAROLD LARA**
 Has Completed a Florida Department of Transportation Approved Temporary Traffic Control (TTC) Advanced Course.
 Date Expires: 05/20/2024 Certificate # 62437
 Instructor: Juan Morales FDOT Provider # 37

ATSSA
 Phone: 540-368-1701
 15 Riverside Parkway Ste.100
 Fredericksburg, VA, www.atssa.com
 donna.clark@atssa.com

ATSSA
 SAFER ROADS SAVE LIVES

DISTANCE BETWEEN SIGNS				Table I Device Spacing				Table II Buffer Space and Taper Length			
Speed (mph)	Spacing (ft.)			Speed (mph)	Buffer Space (ft.)	Taper Length (ft.)	Notes	Speed (mph)	Buffer Space (ft.)	Taper Length (ft.)	Notes
	A	B	C								
40 mph or less	200	200	200	25	155	125		30	425	600	
45 mph	350	350	350	30	200	150	$L = W \cdot S^2$	35	495	650	
50 mph	500	500	500	35	250	225	$L = W \cdot S^2$	40	570	720	$L = W \cdot S$
55 mph or greater	2640	1640	1000	45	350	340	$L = W \cdot S$	65	845	780	

General Traffic Plan (MOT) Notes:

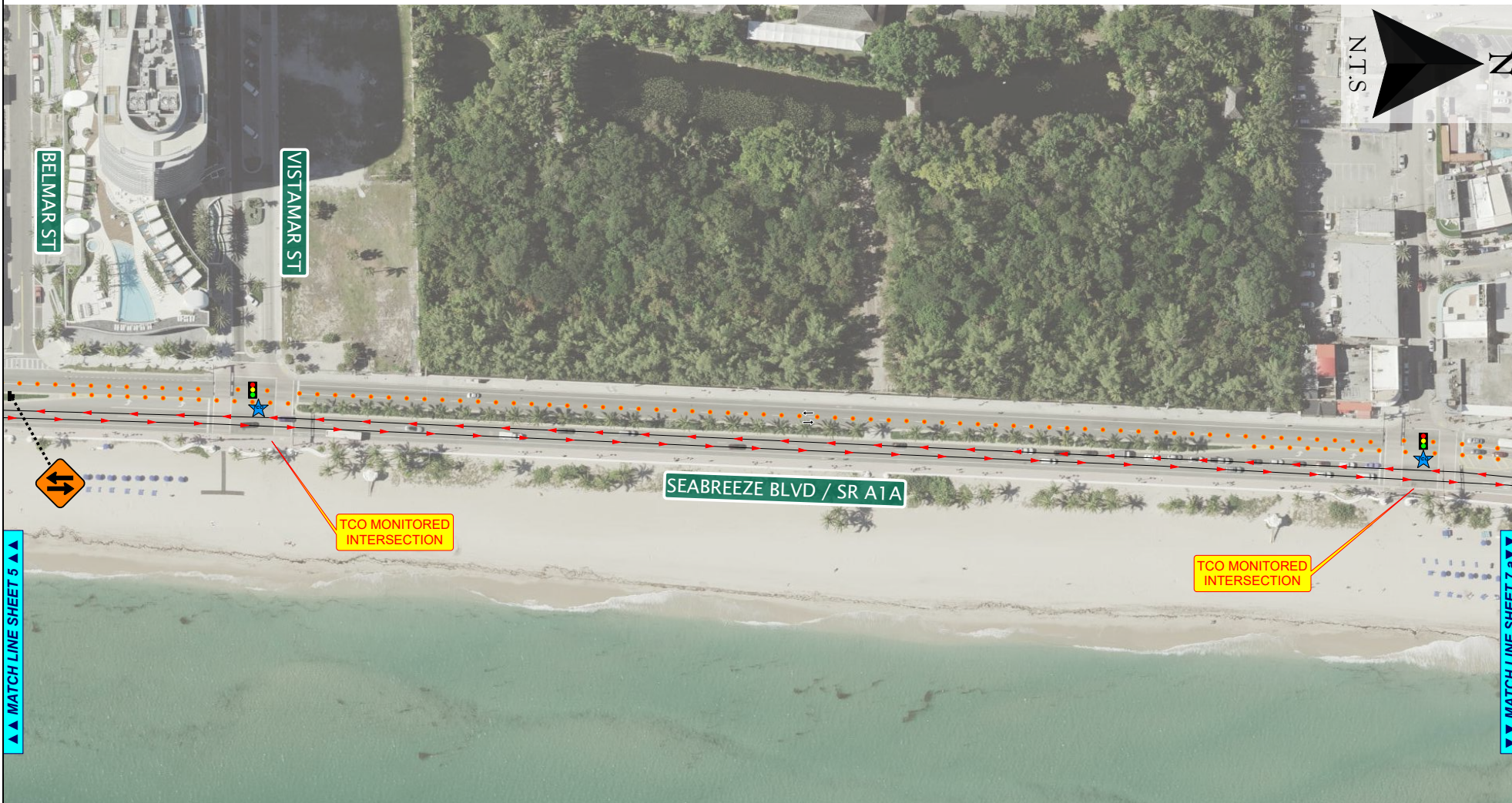
- Copy of approved 11 x 17 (TCP) MOT drawing to be maintained onsite by contractor at all times.
- No changes to TCP/MOT drawing without prior consent of the approving government agency and All American Barricades.
- Access shall be given to local residents, public transportation and emergency response vehicles.
- Accommodations to be made for Pedestrian traffic should the work be in conflict with pathways. Refer to the FY2020-21 FDOT Standard Plans Index 102-660 for specifications.
- All MOT equipment to conform to the latest Manual On Uniform Traffic Control Devices (MUTCD), FDOT, APL with respect to approving agency permit provisions.
- Field conditions to be considered when placing MOT devices.
- TCP/MOT Plan NOT TO SCALE. Refer to FDOT Index 102-600 Series Distance Charts for device spacing and placement information.
- Posted Regulatory Speed Limit to be considered for device placement and distances.
- MOT device(s) placement on plans are an approximate and may be adjusted to suit existing field conditions.
- PLANS NOT TO SCALE.
- All American Barricades does not warrant the traffic control setup by others. The setup must be handled by personnel certified and licensed to handle traffic control.

Project Information			Company		
MULTI RACE					
Revisions			Legend		
No.	DATE	BY	DESCRIPTION		

ALL AMERICAN BARRICADES, CORP.
 ATSSA CERTIFICATE # 62437
 2300 SW 41ST AVENUE
 FT. LAUDERDALE, FL 33317
 1-888-4 SAFETY (888-472-3389)

Designed by: HAROLD LARA
 www.barricades.com
 email: harold@barricades.com

Date: 02/03/21 Sheet: 5



MATCH LINE SHEET 5

MATCH LINE SHEET 7

FDOT This Certifies that **HAROLD LARA**
 Has Completed a Florida Department of Transportation Approved
 Temporary Traffic Control (TTC) Advanced Course.
 Date Expires: 05/20/2024 Certificate # 62437
 Instructor: Juan Morales FDOT Provider # 37

ATSSA
 Phone: 540-368-1701
 15 Riverside Parkway Ste.100
 Fredericksburg, VA,
 www.atssa.com
 donna.clark@atssa.com

SAFER ROADS SAVE LIVES

DISTANCE BETWEEN SIGNS				Table I Device Spacing				Table II Buffer Space and Taper Length			
Speed (mph)	Spacing (ft.)			Speed (mph)	Buffer Space Dist. (ft.)	Notes	Speed (mph)	Taper Length (ft) Lateral Functionality			
	A	B	C					L	Notes		
40 mph or less	200	200	200	25	155	125	30	425	600		
45 mph	350	350	350	30	200	150	35	495	650		
50 mph	500	500	500	35	250	225	60	570	720		
55 mph or greater	2640	1640	1000	40	305	320	65	645	780		
				45	350	340	70	730	840		

General Traffic Plan (MOT) Notes:

- Copy of approved 11 x 17 (TCP) MOT drawing to be maintained onsite by contractor at all times.
- No changes to TCP/MOT drawing without prior consent of the approving government agency and All American Barricades.
- Access shall be given to local residents, public transportation and emergency response vehicles.
- Accommodations to be made for Pedestrian traffic should the work be in conflict with pathways(s). Refer to the FY2020-21 FDOT Standard Plans Index 102-660 for specifications.
- All MOT equipment to conform to the latest Manual On Uniform Traffic Control Devices (MUTCD), FDOT, APL with respect to approving agency permit provisions.
- Field conditions to be considered when placing MOT devices.
- TCP/MOT Plans NOT TO SCALE. Refer to FDOT Index 102-600 Series Distance Charts for device spacing and placement information.
- Posted Regulatory Speed Limit to be considered for device placement and distances.
- MOT device(s) placement on plans are an approximate and may be adjusted to suit existing field conditions.
- All American Barricades does not warrant the traffic control setup by others. The setup must be handled by personnel certified and licensed to handle traffic control.

Project Information			Company		
MULTI RACE			ALL AMERICAN BARRICADES, CORP. ATSSA CERTIFICATE # 62437		
Revisions			2300 SW 41ST AVENUE FT. LAUDERDALE, FL 33317 1-888-4 SAFETY (888-472-3389)		
No.	DATE	BY	DESCRIPTION		

Legend

- Barrel
- Traffic Control Officer
- Water Barrier
- Lane Identification + Direction of Traffic
- Type III Barricades

Designed by: HAROLD LARA
 Date: 02/03/21
 Sheet : 6



FDOT This Certifies that **HAROLD LARA**
 Has Completed a Florida Department of Transportation Approved Temporary Traffic Control (TTC) Advanced Course.
 Date Expires: 05/20/2024 Certificate # 62437
 Instructor: Juan Morales FDOT Provider # 37

ATSSA
 Phone: 540-368-1701
 15 Riverside Parkway Ste.100
 Fredericksburg, VA
 www.atssa.com
 donna.clark@atssa.com

SAFER ROADS SAVE LIVES

DISTANCE BETWEEN SIGNS				Table I Device Spacing				Table II Buffer Space and Taper Length				
Speed (mph)	Spacing (ft.)			Speed (mph)	Type I/II Sign #	Core of Taper/Markers	Notes	Speed (mph)	Buffer Space		Taper Length	
	A	B	C						Dist. (ft.)	L (ft.)	Dist. (ft.)	L (ft.)
40 mph or less	200	200	200	25	155	125	WS ²	30	425	600	55	495
45 mph	350	350	350	25	200	150	L = WS ²	35	450	650	60	570
50 mph	500	500	500	25 to 45	25	50	50	40	505	720	65	645
55 mph or greater	2640	1640	1000	35 to 75	25	50	50	45	350	540	70	730

General Traffic Plan (MOT) Notes:

- Copy of approved 11 x 17 (TCP) MOT drawing to be maintained onsite by contractor at all times.
- No changes to TCP/MOT drawing without prior consent of the approving government agency and All American Barricades.
- Access shall be given to local residents, public transportation and emergency response vehicles.
- Accommodations to be made for Pedestrian traffic should the work be in conflict with pathways(s). Refer to the FY2020-21 FDOT Standard Plans Index 102-660 for specifications.
- All MOT equipment to conform to the latest Manual On Uniform Traffic Control Devices (MUTCD), FDOT, APL with respect to approving agency permit provisions.
- Field conditions to be considered when placing MOT devices.
- TCP/MOT Plan NOT TO SCALE. Refer to FDOT Index 102-660 Series Distance Charts for device spacing and placement information.
- Posted Regulatory Speed Limit to be considered for device placement and distances.
- MOT device(s) placement on plans are an approximate and may be adjusted to suit existing field conditions.
- PLANS NOT TO SCALE.
- All American Barricades does not warrant the traffic control setup by others. The setup must be handled by personnel certified and licensed to handle traffic control.

Project Information			Company		
MULTI RACE					
Revisions					
No.	DATE	BY	DESCRIPTION		

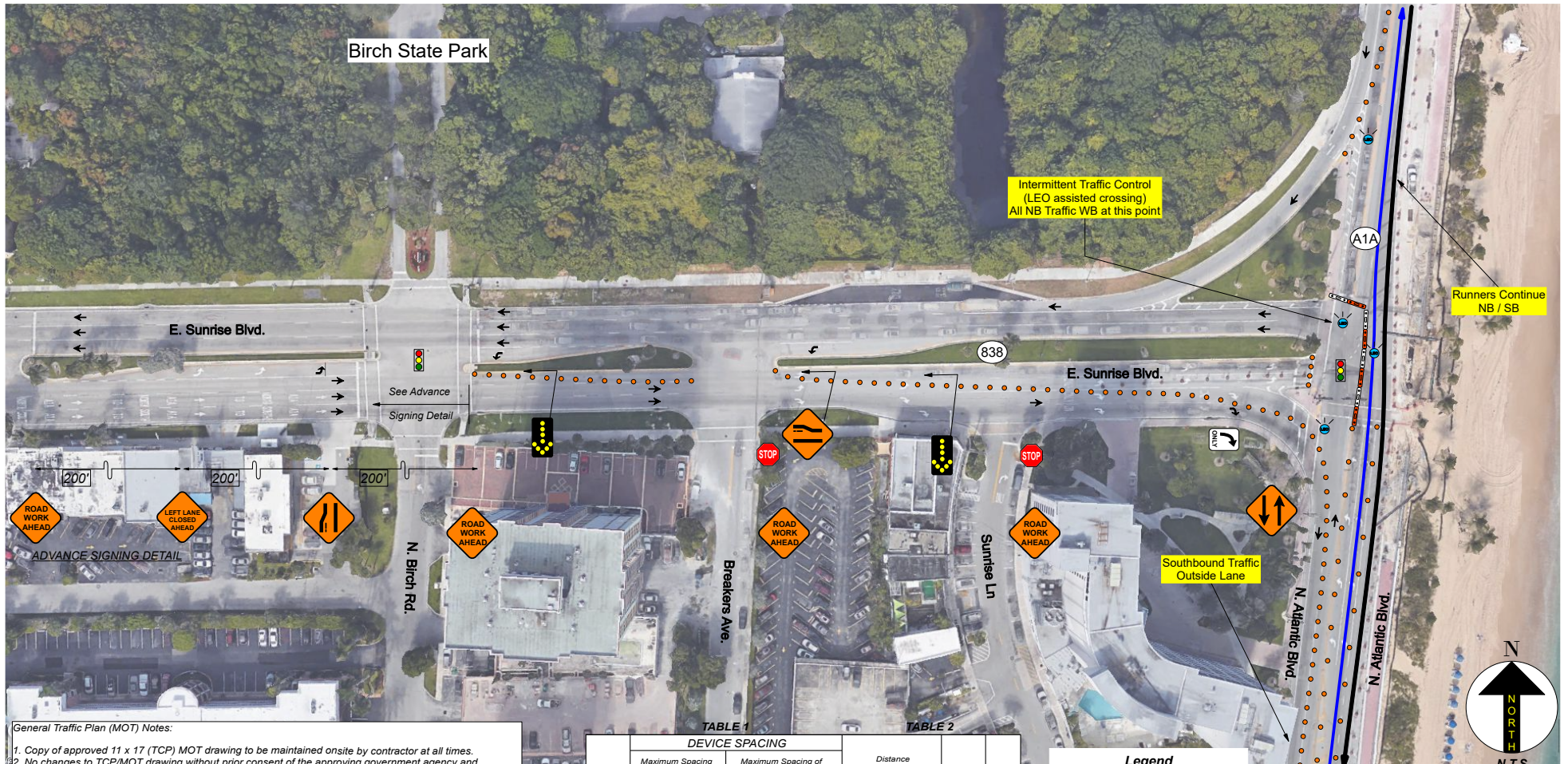
Legend

- Barrel
- Traffic Control Officer
- Water Barrier
- Lane Identification + Direction of Traffic
- Type III Barricades

ALL AMERICAN BARRICADES, CORP.
 ATSSA CERTIFICATE # 62437
 2300 SW 41ST AVENUE
 FT. LAUDERDALE, FL 33317
 1-888-4 SAFETY (888-472-3389)

Designed by: HAROLD LARA
 email: harold@barricades.com

Date: 02/03/21 Sheet : 7a



General Traffic Plan (MOT) Notes:

1. Copy of approved 11 x 17 (TCP) MOT drawing to be maintained onsite by contractor at all times.
2. No changes to TCP/MOT drawing without prior consent of the approving government agency and All American Barricades.
3. Access shall be given to local residents, public transportation and emergency response vehicles.
4. Accommodations to be made for Pedestrian traffic should the work be in conflict with pathway(s). Refer to the FY 2020-21 FDOT Design Standards Index 102-660 for specifications.
5. All MOT equipment to conform to the latest Manual On Uniform Traffic Control Devices (MUTCD), FDOT, APL with respect to approving agency permit provisions.
6. Field conditions to be considered when placing MOT devices.
7. TCP/MOT Plan NOT TO SCALE. Refer to FDOT Index 102-600 Series Distance Charts for device spacing and placement information.
8. Posted Regulatory Speed Limit to be considered for device placement and distances.
9. MOT device(s) placement on plans are an approximate and may be adjusted to suit existing field conditions.
10. PLANS NOT TO SCALE.

Posted Speed	DEVICE SPACING				Distance Between Signs				Buffer Space	Taper Space
	Maximum Spacing of Cones or Tubular Markers		Maximum Spacing of Type I or Type II Barricades/Panels/Drums		A	B	C	D		
	On a Taper	On a Tangent	On a Taper	On a Tangent						
25	25'	50'	25'	50'	200'	200'	200'	100'	200'	125'
30	25'	50'	25'	50'	200'	200'	200'	100'	200'	180'
35	25'	50'	25'	50'	200'	200'	200'	100'	250'	245'
40	25'	50'	25'	50'	200'	200'	200'	100'	305'	320'
45	25'	50'	25'	50'	350'	350'	350'	175'	360'	540'
50	25'	50'	25'	100'	500'	500'	500'	250'	425'	600'
55	25'	50'	25'	100'	2640'	1500'	1000'	500'	495'	660'
60	25'	50'	25'	100'	2640'	1500'	1000'	500'	570'	720'
65	25'	50'	25'	100'	2640'	1500'	1000'	500'	645'	780'
70	25'	50'	25'	100'	2640'	1500'	1000'	500'	730'	840'

Legend

- Delineator
- 🚦 Existing Signalized Intersection
- ➔ Lane Identification + Direction of Traffic
- ↶ Left Turn Movement
- 👮 LEO (Law Enforcement Officer)
- ↷ Right Turn Movement
- Water Barriers 2

FDOT This Certifies that **ARIEL GARCES** Has Completed a Florida Department of Transportation Approved Temporary Traffic Control (TTC) Advanced (Refresher) Course.

Date Expires: 02/10/2024 Certificate # 60071
 Instructor: Richard Garces FDOT Provider # 37

ATSSA Phone: 540-368-1701
 15 Riverside Parkway, Suite 100
 Fredericksburg, VA
 www.atssa.com
 donna.clark@atssa.com

ATSSA
 SAFER ROADS SAVE LIVES

<table border="1"> <thead> <tr> <th>REVISIONS</th> <th>DATE</th> </tr> </thead> <tbody> <tr> <td>DATE</td> <td>DESCRIPTION</td> </tr> </tbody> </table>		REVISIONS	DATE	DATE	DESCRIPTION	ARIEL GARCES ATSSA CERTIFICATE #60071 ALL AMERICAN BARRICADES, CORP. 2300 SW 41ST AVENUE FT. LAUDERDALE, FL 33317 1-888-4 SAFETY (888-472-3389) www.barricades.com / email: ariel@barricades.com		COMPANY NAME EXCLUSIVE SPORTS MARKETING	PROJECT NAME 2021 FT. LAUDERDALE HALF-FULL MARATHON SR A1A & E. SUNRISE BLVD. FT. LAUDERDALE, FL	SHEET NO. 7b
REVISIONS	DATE									
DATE	DESCRIPTION									
		ROAD NO. / COORDINATES	COUNTY BROWARD COUNTY	PROJECT NO.						

DATE: 02/26/2021 TCP DESIGNER: ARIEL GARCES ATSSA #60071



▲▲ MATCH LINE SHEET 7a ▲▲

▲▲ MATCH LINE SHEET 9 ▲▲

FDOT This Certifies that **HAROLD LARA**
 Has Completed a Florida Department of Transportation Approved Temporary Traffic Control (TTC) Advanced Course.
 Date Expires: 05/20/2024 Certificate # 62437
 Instructor: Juan Morales FDOT Provider # 37

ATSSA
 Phone: 540-368-1701
 15 Riverside Parkway Ste.100
 Fredericksburg, VA,
 www.atssa.com
 donna.clark@atssa.com

SAFER ROADS SAVE LIVES

DISTANCE BETWEEN SIGNS				Table I Device Spacing				Table II Buffer Space and Taper Length						
Speed (mph)	Spacing (ft)			Speed (mph)	Type I or Type II Core of or Taper Markers			Speed (mph)	Buffer Space (ft)		Taper Length (ft)			
	A	B	C		Core of or Taper Markers	Notes	Notes		Notes					
40 mph or less	200	200	200	25	155	125	30	425	600	L = WS				
45 mph	350	350	350	25	30	25	30	35	250	225	L = WS ²			
50 mph	500	500	500	30 to 45	25	50	50	40	305	320	60	570	720	L = WS
55 mph or greater	2640	1640	1000	30 to 75	25	50	50	45	350	340	L = WS	70	750	840

General Traffic Plan (MOT) Notes:

- Copy of approved 11 x 17 (TCP) MOT drawing to be maintained onsite by contractor at all times.
- No changes to TCP/MOT drawing without prior consent of the approving government agency and All American Barricades.
- Access shall be given to local residents, public transportation and emergency response vehicles.
- Accommodations to be made for Pedestrian traffic should the work be in conflict with pathways. Refer to the FY2020-21 FDOT Standard Plans Index 102-660 for specifications.
- All MOT equipment to conform to the latest Manual On Uniform Traffic Control Devices (MUTCD), FDOT, APL with respect to approving agency permit provisions.
- Field conditions to be considered when placing MOT devices.
- TCP/MOT Plans NOT TO SCALE. Refer to FDOT Index 102-600 Series Distance Charts for device spacing and placement information.
- Posted Regulatory Speed Limit to be considered for device placement and distances.
- MOT device(s) placement on plans are an approximate and may be adjusted to suit existing field conditions.
- PLANS NOT TO SCALE.
- All American Barricades does not warrant the traffic control setup by others. The setup must be handled by personnel certified and licensed to handle traffic control.

Project Information			Company		
MULTI RACE					
Revisions					
No.	DATE	BY	DESCRIPTION		

Legend

- Barrel
- Traffic Control Officer
- Water Barrier
- Lane Identification + Direction of Traffic
- Type III Barricades

ALL AMERICAN BARRICADES, CORP.
 ATSSA CERTIFICATE # 62437
 2300 SW 41ST AVENUE
 FT. LAUDERDALE, FL 33317
 1-888-4 SAFETY (888-472-3389)

Designed by: HAROLD LARA
 www.barricades.com
 email: harold@barricades.com

Date: 02/03/21 Sheet : 8



FDOT This Certifies that **HAROLD LARA**
 Has Completed a Florida Department of Transportation Approved Temporary Traffic Control (TTC) Advanced Course.
 Date Expires: 05/20/2024 Certificate # 62437
 Instructor: Juan Morales FDOT Provider # 37

ATSSA
 Phone: 540-368-1701
 15 Riverside Parkway Ste.100
 Fredericksburg, VA,
 www.atssa.com
 donna.clark@atssa.com

ATSSA
 SAFER ROADS SAVE LIVES

DISTANCE BETWEEN SIGNS				Table I Device Spacing				Table II Buffer Space and Taper Length				
Speed (mph)	Spacing (ft.)			Speed (mph)	Buffer Space (ft.)	Taper Length (ft.)	Notes	Speed (mph)	Buffer Space (ft.)	Taper Length (ft.)	Notes	
	A	B	C									
40 mph or less	200	200	200	25	155	125		30	425	600		
45 mph	350	350	350	35	250	225	$L = WS^2$	35	495	650		
50 mph	500	500	500	50	400	350	$L = WS^2$	60	570	720	$L = WS$	
55 mph or greater	2640	1640	1000	75 to 75	25	50	50	100	45	350	540	$L = WS$

General Traffic Plan (MOT) Notes:

- Copy of approved 11 x 17 (TCP) MOT drawing to be maintained onsite by contractor at all times.
- No changes to TCP/MOT drawing without prior consent of the approving government agency and All American Barricades.
- Access shall be given to local residents, public transportation and emergency response vehicles.
- Accommodations to be made for Pedestrian traffic should the work be in conflict with pathways(s). Refer to the FY2020-21 FDOT Standard Plans Index 102-660 for specifications.
- All MOT equipment to conform to the latest Manual On Uniform Traffic Control Devices (MUTCD), FDOT, APL with respect to approving agency permit provisions.
- Field conditions to be considered when placing MOT devices.
- TCP/MOT Plans NOT TO SCALE. Refer to FDOT Index 102-600 Series Distance Charts for device spacing and placement information.
- Posted Regulatory Speed Limit to be considered for device placement and distances.
- MOT device(s) placement on plans are an approximate and may be adjusted to suit existing field conditions.
- PLANS NOT TO SCALE.
- All American Barricades does not warrant the traffic control setup by others. The setup must be handled by personnel certified and licensed to handle traffic control.

Project Information			Company		
MULTI RACE					
Revisions			Legend		
No.	DATE	BY	<ul style="list-style-type: none"> Barrel Traffic Control Officer Water Barrier Lane Identification + Direction of Traffic Type III Barricades 		

ALL AMERICAN BARRICADES, CORP.
 ATSSA CERTIFICATE # 62437
 2300 SW 41ST AVENUE
 FT. LAUDERDALE, FL 33317
 1-888-4 SAFETY (888-472-3389)

Designed by: HAROLD LARA
 www.barricades.com
 email: harold@barricades.com

Date: 02/03/21 Sheet : 9



FDOT This Certifies that **HAROLD LARA**
 Has Completed a Florida Department of Transportation Approved Temporary Traffic Control (TTC) Advanced Course.
 Date Expires: 05/20/2024 Certificate # 62437
 Instructor: Juan Morales FDOT Provider # 37

ATSSA
 Phone: 540-368-1701
 15 Riverside Parkway Ste.100
 Fredericksburg, VA,
 www.atssa.com
 donna.clark@atssa.com

SAFER ROADS SAVE LIVES

DISTANCE BETWEEN SIGNS				Table I Device Spacing			Table II Buffer Space and Taper Length					
Speed	Spacing (ft.)			Speed (mph)	Type I ¹ or Type II ² Core or Taper Markers	Type I ¹ or Type II ² Buffer Space (ft.)	Taper Length (ft.)		Buffer Space		Taper Length (ft.)	
	A	B	C				Notes	Notes	Notes			
40 mph or less	200	200	200	25	155	125	30	425	600	30	425	600
45 mph	350	350	350	35	200	150	35	495	650	35	495	650
50 mph	500	500	500	35 to 45	25	50	35	570	720	35	570	720
55 mph or greater	2640	1640	1000	35 to 75	25	50	50	645	780	50	645	780

General Traffic Plan (MOT) Notes:

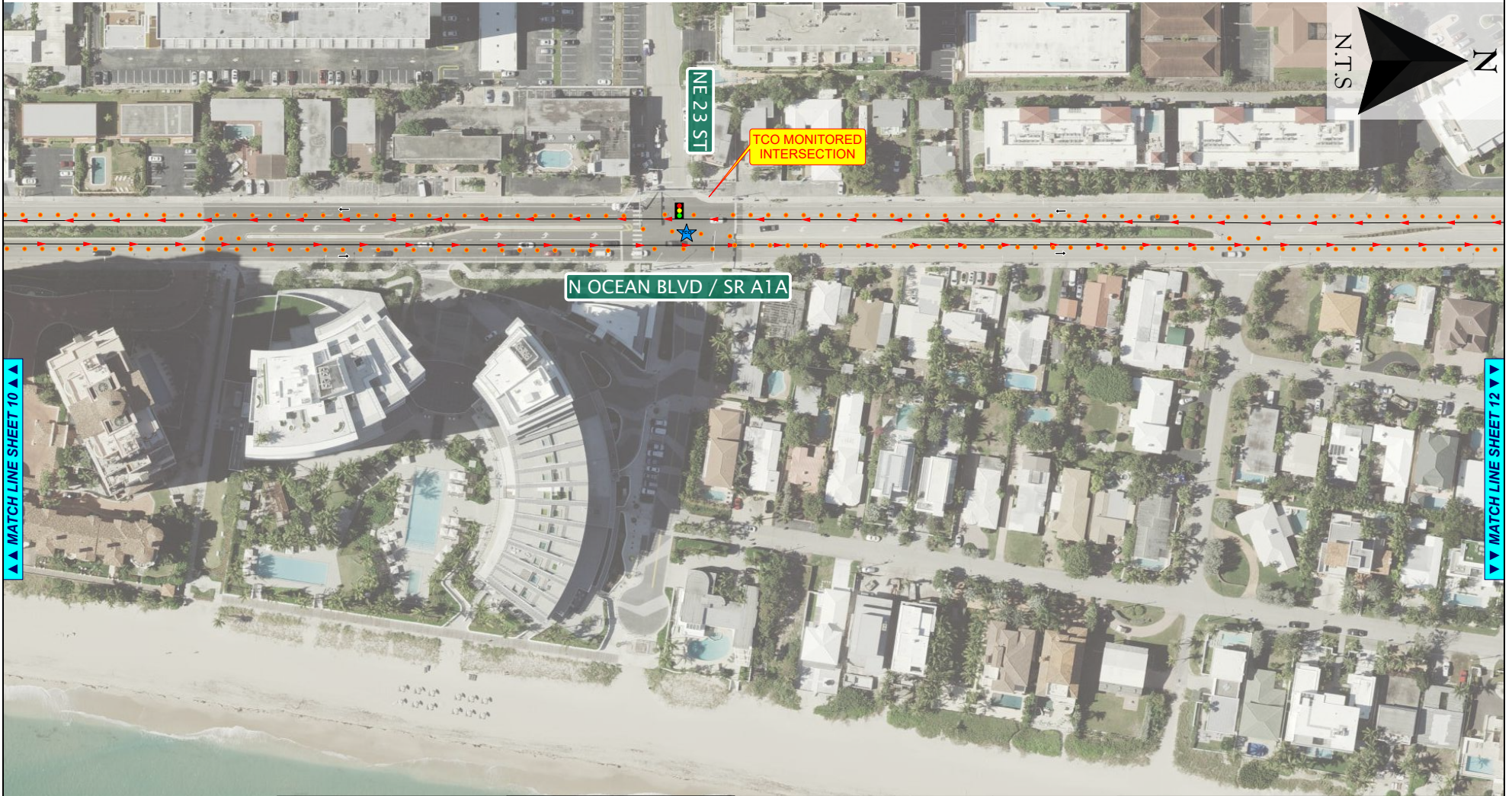
- Copy of approved 11 x 17 (TCP) MOT drawing to be maintained onsite by contractor at all times.
- No changes to TCP/MOT drawing without prior consent of the approving government agency and All American Barricades.
- Access shall be given to local residents, public transportation and emergency response vehicles.
- Accommodations to be made for Pedestrian traffic should the work be in conflict with pathways(Refer to the FY2020-21 FDOT Standard Plans Index 102-660 for specifications).
- All MOT equipment to conform to the latest Manual On Uniform Traffic Control Devices (MUTCD), FDOT, APL with respect to approving agency permit provisions.
- Field conditions to be considered when placing MOT devices.
- TCP/MOT Plans NOT TO SCALE. Refer to FDOT Index 102-600 Series Distance Charts for device spacing and placement information.
- Posted Regulatory Speed Limit to be considered for device placement and distances.
- MOT device(s) placement on plans are an approximate and may be adjusted to suit existing field conditions.
- PLANS NOT TO SCALE.
- All American Barricades does not warrant the traffic control setup by others. The setup must be handled by personnel certified and licensed to handle traffic control.

Project Information			Company		
MULTI RACE			ALL AMERICAN BARRICADES, CORP. ATSSA CERTIFICATE # 62437		
Revisions			Legend		
No.	DATE	BY	Legend		
			● Barrel	← Lane Identification + Direction of Traffic	
			★ Traffic Control Officer	■ Type III Barricades	
			! Water Barrier		

ALL AMERICAN BARRICADES, CORP.
 2300 SW 41ST AVENUE
 FT. LAUDERDALE, FL 33317
 1-888-4 SAFETY (888-472-3389)

Designed by: HAROLD LARA
 www.barricades.com
 email: harold@barricades.com

Date: 02/03/21 Sheet : 10



FDOT This Certifies that **HAROLD LARA**
 Has Completed a Florida Department of Transportation Approved Temporary Traffic Control (TTC) Advanced Course.
 Date Expires: 05/20/2024 Certificate # 62437
 Instructor: Juan Morales FDOT Provider # 37

ATSSA
 Phone: 540-368-1701
 15 Riverside Parkway Ste.100
 Fredericksburg, VA,
 www.atssa.com
 donna.clark@atssa.com

SAFER ROADS SAVE LIVES

DISTANCE BETWEEN SIGNS				Table I Device Spacing				Table II Buffer Space and Taper Length			
Speed	Spacing (ft.)			Speed (mph)	Max. Distance Between Devices (ft.)			Speed (mph)	Buffer Space		Taper Length (ft.)
	A	B	C		Core of Taper Markers	Type I/II Baricades or Vertical Posts or Signs	Type I/II Baricades or Vertical Posts or Signs		Notes	Notes	
40 mph or less	200	200	200	25	155	125	30	425	600		
45 mph	350	350	350	25	25	30	30	495	550		
50 mph	500	500	500	25 to 45	25	30	30	570	720	L = WS	
55 mph or greater	2640	1640	1000	35 to 75	25	50	100	645	780	L = WS	

General Traffic Plan (MOT) Notes:

- Copy of approved 11 x 17 (TCP) MOT drawing to be maintained onsite by contractor at all times.
- No changes to TCP/MOT drawing without prior consent of the approving government agency and All American Barricades.
- Access shall be given to local residents, public transportation and emergency response vehicles.
- Accommodations to be made for Pedestrian traffic should the work be in conflict with pathways (Refer to the FY2020-21 FDOT Standard Plans Index 102-660 for specifications).
- All MOT equipment to conform to the latest Manual On Uniform Traffic Control Devices (MUTCD), FDOT, APL with respect to approving agency permit provisions.
- Field conditions to be considered when placing MOT devices.
- TC/MOT Plans NOT TO SCALE. Refer to FDOT Index 102-600 Series Distance Charts for device spacing and placement information.
- Posted Regulatory Speed Limit to be considered for device placement and distances.
- MOT device(s) placement on plans are an approximate and may be adjusted to suit existing field conditions.
- All American Barricades does not warrant the traffic control setup by others. The setup must be handled by personnel certified and licensed to handle traffic control.

Project Information			Company		
MULTI RACE					
Revisions					
No.	DATE	BY	DESCRIPTION		

Legend

- Barrel
- Traffic Control Officer
- Water Barrier
- Lane Identification + Direction of Traffic
- Type III Barricades

ALL AMERICAN BARRICADES, CORP.
 ATSSA CERTIFICATE # 62437
 2300 SW 41ST AVENUE
 FT. LAUDERDALE, FL 33317
 1-888-4 SAFETY (888-472-3389)

Designed by : HAROLD LARA
 www.barricades.com
 email: harold@barricades.com

Date: 02/03/21 Sheet : 11



FDOT This Certifies that **HAROLD LARA**
 Has Completed a Florida Department of Transportation Approved Temporary Traffic Control (TTC) Advanced Course.
 Date Expires: 05/20/2024 Certificate # 62437
 Instructor: Juan Morales FDOT Provider # 37

ATSSA
 Phone: 540-368-1701
 15 Riverside Parkway Ste.100
 Fredericksburg, VA
 www.atssa.com
 donna.clark@atssa.com

SAFER ROADS SAVE LIVES

DISTANCE BETWEEN SIGNS				Table I Device Spacing				Table II Buffer Space and Taper Length				
Speed	Spacing (ft)			Speed (mph)	Type I or Type II Cores or Taper Markers Perch or Spine	Type I or Type II Barrioles or Vertical Perch or Spine	Speed (mph)	Buffer Space		Speed (mph)	Taper Length	
	A	B	C					Dist. (ft)	Dist. (ft)		Dist. (ft)	Dist. (ft)
40 mph or less	200	200	200	25	155	125	30	425	600	30	425	600
45 mph	350	350	350	35	200	150	35	495	665	35	495	665
50 mph	500	500	500	35 to 45	250	225	40	570	720	40	570	720
55 mph or greater	2640	1640	1000	35 to 75	350	320	45	660	840	45	660	840

General Traffic Plan (MOT) Notes:

- Copy of approved 11 x 17 (TCP) MOT drawing to be maintained onsite by contractor at all times.
- No changes to TCP/MOT drawing without prior consent of the approving government agency and All American Barricades.
- Access shall be given to local residents, public transportation and emergency response vehicles.
- Accommodations to be made for Pedestrian traffic should the work be in conflict with pathways(s) Refer to the FY2020-21 FDOT Standard Plans Index 102-660 for specifications.
- All MOT Equipment to conform to the latest Manual On Uniform Traffic Control Devices (MUTCD), FDOT, APL with respect to approving agency permit provisions.
- Field conditions to be considered when placing MOT devices.
- TC/MOT Plan NOT TO SCALE. Refer to FDOT Index 102-600 Series Distance Charts for device spacing and placement information.
- Posted Regulatory Speed Limit to be considered for device placement and distances.
- MOT device(s) placement on plans are an approximate and may be adjusted to suit existing field conditions.
- PLANS NOT TO SCALE.
- All American Barricades does not warrant the traffic control setup by others. The setup must be handled by personnel certified and licensed to handle traffic control.

Project Information			Company		
MULTI RACE					
Revisions			Legend		
No.	DATE	BY	DESCRIPTION		

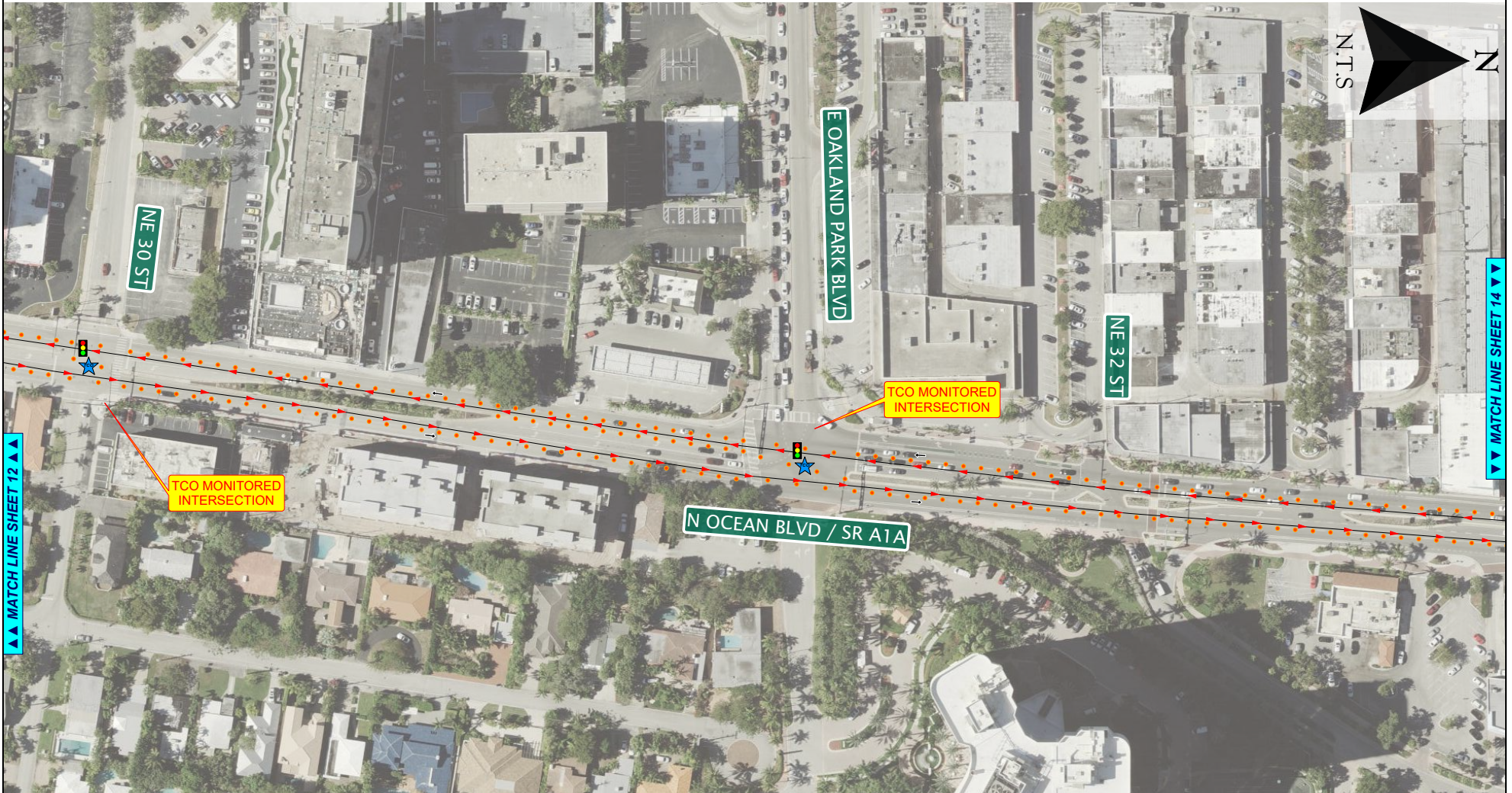
Legend

- Barrel
- Traffic Control Officer
- Water Barrier
- Lane Identification + Direction of Traffic
- Type III Barricades

ALL AMERICAN BARRICADES, CORP.
 ATSSA CERTIFICATE # 62437
 2300 SW 41ST AVENUE
 FT. LAUDERDALE, FL 33317
 1-888-4 SAFETY (888-472-3389)

Designed by : HAROLD LARA
 www.barricades.com
 email: harold@barricades.com

Date: 02/03/21 Sheet : 12



FDOT This Certifies that **HAROLD LARA**
 Has Completed a Florida Department of Transportation Approved Temporary Traffic Control (TTC) Advanced Course.
 Date Expires: 05/20/2024 Certificate # 62437
 Instructor: Juan Morales FDOT Provider # 37

ATSSA
 Phone: 540-368-1701
 15 Riverside Parkway Ste.100
 Fredericksburg, VA, www.atssa.com
 donna.clark@atssa.com

SAFER ROADS SAVE LIVES

DISTANCE BETWEEN SIGNS			Table I Device Spacing		Table II Buffer Space and Taper Length				
Speed	Spacing (ft)			Speed (mph)	Type I/II Barriercs or Vertical Posts or Spine	Buffer Space (ft)		Taper Length (ft)	
	A	B	C			Dist. (ft)	Notes	Dist. (ft)	Notes
40 mph or less	200	200	200	25	155	125	30	425	600
45 mph	350	350	350	30	200	150	35	495	650
50 mph	500	500	500	35	250	225	40	570	720
55 mph or greater	650	650	650	40	305	270	45	645	780
	800	800	800	45	360	340	50	720	840

General Traffic Plan (MOT) Notes:

- Copy of approved 11 x 17 (TCP) MOT drawing to be maintained onsite by contractor at all times.
- No changes to TCP/MOT drawing without prior consent of the approving government agency and All American Barricades.
- Access shall be given to local residents, public transportation and emergency response vehicles.
- Accommodations to be made for Pedestrian traffic should the work be in conflict with pathways (Refer to the FY2020-21 FDOT Standard Plans Index 102-660 for specifications).
- All MOT equipment to conform to the latest Manual On Uniform Traffic Control Devices (MUTCD), FDOT, APL with respect to approving agency permit provisions.
- Field conditions to be considered when placing MOT devices.
- TCP/MOT Plans NOT TO SCALE. Refer to FDOT Index 102-600 Series Distance Charts for device spacing and placement information.
- Posted Regulatory Speed Limit to be considered for device placement and distances.
- MOT device(s) placement on plans are an approximate and may be adjusted to suit existing field conditions.
- PLANS NOT TO SCALE.
- All American Barricades does not warrant the traffic control setup by others. The setup must be handled by personnel certified and licensed to handle traffic control.

Project Information			Company		
MULTI RACE					
Revisions			Legend		
No.	DATE	BY	Legend		
			● Barrel	← Lane Identification + Direction of Traffic	
			★ Traffic Control Officer	■ Type III Barricades	
			! Water Barrier		

ALL American Barricades
 ALL AMERICAN BARRICADES, CORP.
 ATSSA CERTIFICATE # 62437
 2300 SW 41ST AVENUE
 FT. LAUDERDALE, FL 33317
 1-888-4 SAFETY (888-472-3389)
 www.barricades.com
 email: harold@barricades.com

Designed by: HAROLD LARA
 Date: 02/03/21
 Sheet : 13



FDOT This Certifies that **HAROLD LARA**
 Has Completed a Florida Department of Transportation Approved
 Temporary Traffic Control (TTC) Advanced Course.
 Date Expires: 05/20/2024 Certificate # 62437
 Instructor: Juan Morales FDOT Provider # 37

ATSSA
 Phone: 540-368-1701
 15 Riverside Parkway Ste.100
 Fredericksburg, VA,
 www.atssa.com
 donna.clark@atssa.com

SAFER ROADS SAVE LIVES

DISTANCE BETWEEN SIGNS				Table I Device Spacing				Table II Buffer Space and Taper Length			
Speed	Spacing (ft)			Speed (mph)	Min. Distance Between Devices (ft)			Speed (mph)	Buffer Space		Taper Length (ft)
	A	B	C		Core or Taper Markers	Barriers or Vertical Posts or Signs	Notes		Dist. (ft)	Notes	
40 mph or less	200	200	200	25	155	125	30	425	600		
45 mph	350	350	350	25	25	30	30	55	495	650	
50 mph	500	500	500	25 to 45	25	30	30	60	570	720	
55 mph or greater	2640	1640	1000	30 to 75	25	50	50	65	645	780	

General Traffic Plan (MOT) Notes:

- Copy of approved 11 x 17 (TCP) MOT drawing to be maintained onsite by contractor at all times.
- No charges to TCP/MOT drawing without prior consent of the approving government agency and All American Barricades.
- Access shall be given to local residents, public transportation and emergency response vehicles.
- Accommodations to be made for Pedestrian traffic should the work be in conflict with pathways (Refer to the FY2020-21 FDOT Standard Plans Index 102-660 for specifications).
- All MOT equipment to conform to the latest Manual On Uniform Traffic Control Devices (MUTCD), FDOT, APL with respect to approving agency permit provisions.
- Field conditions to be considered when placing MOT devices.
- TCP/MOT Plans NOT TO SCALE. Refer to FDOT Index 102-600 Series Distance Charts for device spacing and placement information.
- Posted Regulatory Speed Limit to be considered for device placement and distances.
- MOT device(s) placement on plans are an approximate and may be adjusted to suit existing field conditions.
- PLANS NOT TO SCALE.
- All American Barricades does not warrant the traffic control setup by others. The setup must be handled by personnel certified and licensed to handle traffic control.

Project Information			Company		
MULTI RACE					
Revisions			Legend		
No.	DATE	BY	DESCRIPTION		

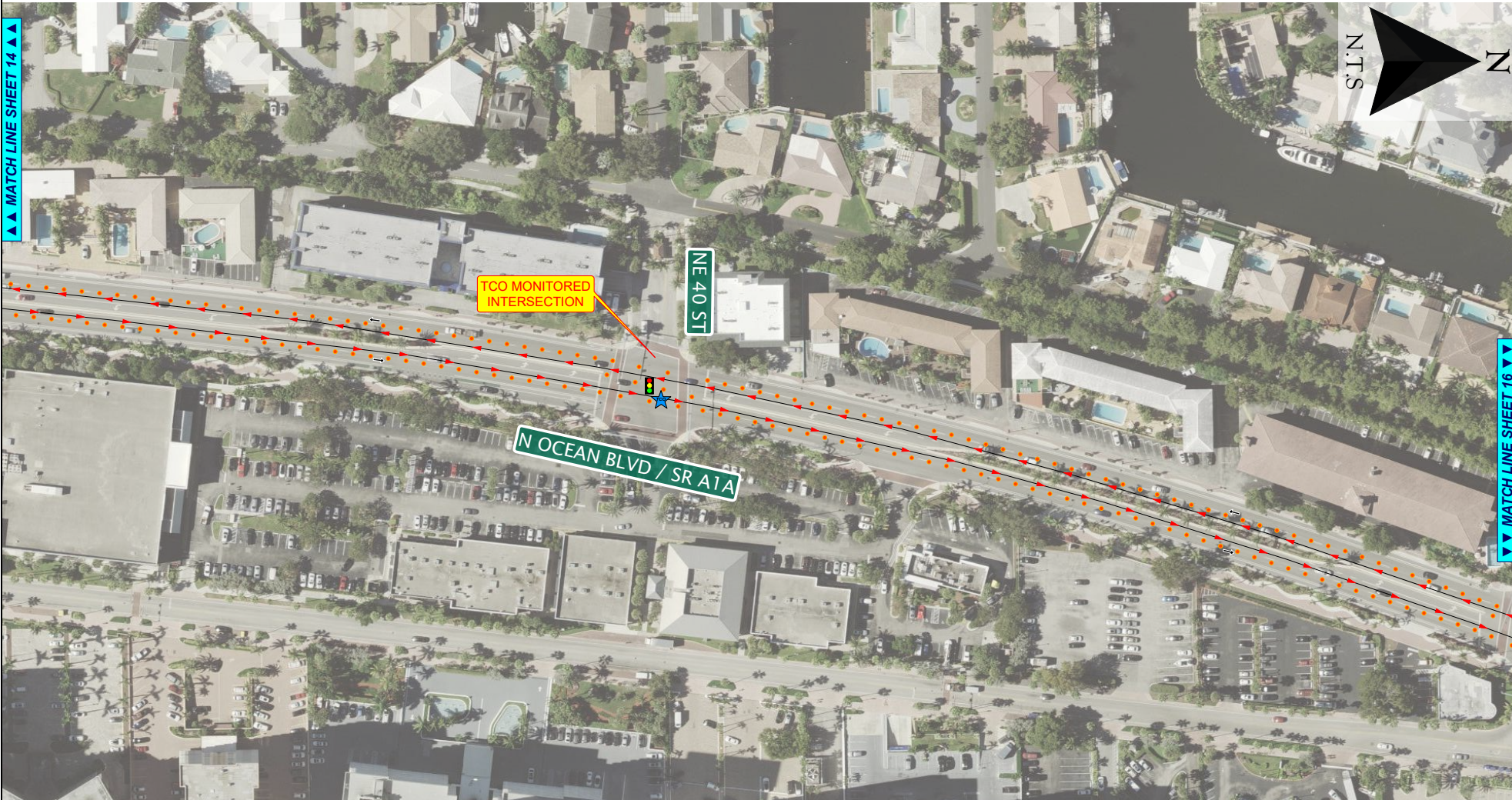
Legend

- Barrel
- Traffic Control Officer
- Water Barrier
- Lane Identification + Direction of Traffic
- Type III Barricades

ALL AMERICAN BARRICADES, CORP.
 ATSSA CERTIFICATE # 62437
 2300 SW 41ST AVENUE
 FT. LAUDERDALE, FL 33317
 1-888-4 SAFETY (888-472-3389)

Designed by: HAROLD LARA
 www.barricades.com
 email: harold@barricades.com

Date: 02/03/21 Sheet : 14



FDOT
 This Certifies that
HAROLD LARA
 Has Completed a Florida Department of Transportation Approved
 Temporary Traffic Control (TTC) Advanced Course.
 Date Expires: 05/20/2024
 Instructor: Juan Morales
 Certificate # 62437
 FDOT Provider # 37

ATSSA
 Phone: 540-368-1701
 15 Riverside Parkway Ste.100
 Fredericksburg, VA,
 www.atssa.com
 donna.clark@atssa.com

ATSSA
 SAFER ROADS SAVE LIVES

DISTANCE BETWEEN SIGNS				Table I Device Spacing				Table II Buffer Space and Taper Length			
Speed	Spacing (ft)			Speed (mph)	Max. Distance Between Devices (ft)			Speed (mph)	Buffer Space		Taper Length (ft)
	A	B	C		Core or Taper Markers	Type III Barricades or Vertical Posts or Signs	Notes		Dist. (ft)	Notes	
40 mph or less	200	200	200	25	25	25	30	30	425	600	L = WS
45 mph	350	350	350	25	25	30	30	30	425	600	L = WS
50 mph	500	500	500	25 to 45	25	30	30	30	570	720	L = WS
55 mph or greater	2640	1640	1000	30 to 75	25	50	50	100	445	780	L = WS

General Traffic Plan (MOT) Notes:

- Copy of approved 11 x 17 (TCP) MOT drawing to be maintained onsite by contractor at all times.
- No charges to TCP/MOT drawing without prior consent of the approving government agency and All American Barricades.
- Access shall be given to local residents, public transportation and emergency response vehicles.
- Accommodations to be made for Pedestrian traffic should the work be in conflict with pathways (Refer to the FY2020-21 FDOT Standard Plans Index 102-660 for specifications).
- All MOT equipment to conform to the latest Manual On Uniform Traffic Control Devices (MUTCD), FDOT, APL with respect to approving agency permit provisions.
- Field conditions to be considered when placing MOT devices.
- TCP/MOT Plans NOT TO SCALE. Refer to FDOT Index 102-600 Series Distance Charts for device spacing and placement information.
- Posted Regulatory Speed Limit to be considered for device placement and distances.
- MOT device(s) placement on plans are an approximate and may be adjusted to suit existing field conditions.
- PLANS NOT TO SCALE.
- All American Barricades does not warrant the traffic control setup by others. The setup must be handled by personnel certified and licensed to handle traffic control.

Project Information			Company		
MULTI RACE					
Revisions			Legend		
No.	DATE	BY	Legend		
			● Barrel	← Lane Identification + Direction of Traffic	
			★ Traffic Control Officer	■ Type III Barricades	
			! Water Barrier		

ALL AMERICAN BARRICADES, CORP.
 ATSSA CERTIFICATE # 62437
 2300 SW 41ST AVENUE
 FT. LAUDERDALE, FL 33317
 1-888-4 SAFETY (888-472-3389)

Designed by: HAROLD LARA
 www.barricades.com
 email: harold@barricades.com

Date: 02/03/21
 Sheet : 15



FDOT This Certifies that **HAROLD LARA**
 Has Completed a Florida Department of Transportation Approved
 Temporary Traffic Control (TTC) Advanced Course.
 Date Expires: 05/20/2024 Certificate # 62437
 Instructor: Juan Morales FDOT Provider # 37

ATSSA
 Phone: 540-368-1701
 15 Riverside Parkway Ste.100
 Fredericksburg, VA,
 www.atssa.com
 donna.clark@atssa.com

ATSSA
 SAFER ROADS SAVE LIVES

DISTANCE BETWEEN SIGNS				Table I Device Spacing				Table II Buffer Space and Taper Length				
Speed	Spacing (ft)			Speed (mph)	Max. Distance Between Devices (ft)			Speed (mph)	Buffer Space		Taper Length	
	A	B	C		Core of Taper Markers	Type I/II Type III Baricades or Vertical Posts or Signs	Notes		Space (ft)	Notes	Length (ft)	Notes
40 mph or less	200	200	200	25	155	125	25	155	60	425	600	
45 mph	350	350	350	35	250	190	30	250	60	495	650	
50 mph	500	500	500	35 to 45	350	245	40	350	60	570	720	
55 mph or greater	2640	1640	1000	55 to 75	550	320	45	350	60	645	780	

General Traffic Plan (MOT) Notes:

- Copy of approved 11 x 17 (TCP) MOT drawing to be maintained onsite by contractor at all times.
- No changes to TCP/MOT drawing without prior consent of the approving government agency and All American Barricades.
- Access shall be given to local residents, public transportation and emergency response vehicles.
- Accommodations to be made for Pedestrian traffic should the work be in conflict with pathways. Refer to the FY2020-21 FDOT Standard Plans Index 102-600 for specifications.
- All MOT equipment to conform to the latest Manual On Uniform Traffic Control Devices (MUTCD), FDOT, APL with respect to approving agency permit provisions.
- Field conditions to be considered when placing MOT devices.
- TCP/MOT Plans NOT TO SCALE. Refer to FDOT Index 102-600 Series Distance Charts for device spacing and placement information.
- Posted Regulatory Speed Limit to be considered for device placement and distances.
- MOT device(s) placement on plans are an approximate and may be adjusted to suit existing field conditions.
- PLANS NOT TO SCALE.
- All American Barricades does not warrant the traffic control setup by others. The setup must be handled by personnel certified and licensed to handle traffic control.

Project Information			Company		
MULTI RACE					
Revisions			Legend		
No.	DATE	BY	Legend		
			● Barrel	← Lane Identification + Direction of Traffic	
			★ Traffic Control Officer	■ Type III Barricades	
			! Water Barrier		

All American Barricades
 ALL AMERICAN BARRICADES, CORP.
 ATSSA CERTIFICATE # 62437
 2300 SW 41ST AVENUE
 FT. LAUDERDALE, FL 33317
 1-888-4 SAFETY (888-472-3389)

Designed by: HAROLD LARA
 www.barricades.com
 email: harold@barricades.com

Date: 02/03/21 Sheet : 16



FDOT This Certifies that **HAROLD LARA**
 Has Completed a Florida Department of Transportation Approved
 Temporary Traffic Control (TTC) Advanced Course.
 Date Expires: 05/20/2024 Certificate # 62437
 Instructor: Juan Morales FDOT Provider # 37

ATSSA
 Phone: 540-368-1701
 15 Riverside Parkway Ste.100
 Fredericksburg, VA, www.atssa.com
 donna.clark@atssa.com

SAFER ROADS SAVE LIVES

DISTANCE BETWEEN SIGNS				Table I Device Spacing				Table II Buffer Space and Taper Length			
Speed (mph)	Spacing (ft)			Speed (mph)	Max. Distance Between Devices (ft)			Speed (mph)	Buffer Space (ft)		Taper Length (ft)
	A	B	C		Core of Taper Markers	Barrel(s) or Vertical Rebar(s) Spacing	Notes		Space (ft)	Notes	
40 mph or less	200	200	200	25	155	125	30	425	600		
45 mph	350	350	350	25	200	150	35	495	650		
50 mph	500	500	500	25	250	225	40	570	720	L = WS	
55 mph or greater	2640	1640	1000	30 to 75	25	50	50	645	780	L = WS	

General Traffic Plan (MOT) Notes:

- Copy of approved 11 x 17 (TCP) MOT drawing to be maintained onsite by contractor at all times.
- No changes to TCP/MOT drawing without prior consent of the approving government agency and All American Barricades.
- Access shall be given to local residents, public transportation and emergency response vehicles.
- Accommodations to be made for Pedestrian traffic should the work be in conflict with pathways(s). Refer to the FY2020-21 FDOT Standard Plans Index 102-660 for specifications.
- All MOT equipment to conform to the latest Manual On Uniform Traffic Control Devices (MUTCD), FDOT, APL with respect to approving agency permit provisions.
- Field conditions to be considered when placing MOT devices.
- TC/MOT Plan NOT TO SCALE. Refer to FDOT Index 102-660 Series Distance Charts for device spacing and placement information.
- Posted Regulatory Speed Limit to be considered for device placement and distances.
- MOT device(s) placement on plans are an approximate and may be adjusted to suit existing field conditions.
- PLANS NOT TO SCALE.
- All American Barricades does not warrant the traffic control setup by others. The setup must be handled by personnel certified and licensed to handle traffic control.

Project Information			Company		
MULTI RACE					
Revisions			Legend		
No.	DATE	BY	DESCRIPTION		

Legend

- Barrel
- Traffic Control Officer
- Water Barrier
- Lane Identification + Direction of Traffic
- Type III Barricades

ALL AMERICAN BARRICADES, CORP.
 ATSSA CERTIFICATE # 62437
 2300 SW 41ST AVENUE
 FT. LAUDERDALE, FL 33317
 1-888-4 SAFETY (888-472-3389)

Designed by: HAROLD LARA
 www.barricades.com
 email: harold@barricades.com

Date: 02/03/21 Sheet : 17