



FORT LAUDERDALE PARKS AND RECREATION BOND MASTER PLAN DESIGN & IMPLEMENTATION PROGRAM

**LOCKHART COMMUNITY PARK UPDATE – COMMISSION CONFERENCE MEETING
SEPTEMBER 3, 2024**

PROGRESS UPDATE

■ Completed

- Plans proceeding to 90%
 - Grading and drainage plans
 - Water and sewer service
 - Site lighting plan
 - Architectural design
 - Landscape architecture
 - Wayfinding and signage
- Environmental Site Assessment
 - Phase 2 Groundwater Monitoring completed
- Traffic Evaluation and Statement completed
- FAA approval pending
- Development Review Committee (DRC) comments addressed and ready for resubmittal

CURTIS + ROGERS DESIGN STUDIO

UPDATED COMMUNITY CENTER AND SITE PLAN



UPDATED SITE PLAN



Proposed Park Elements Legend

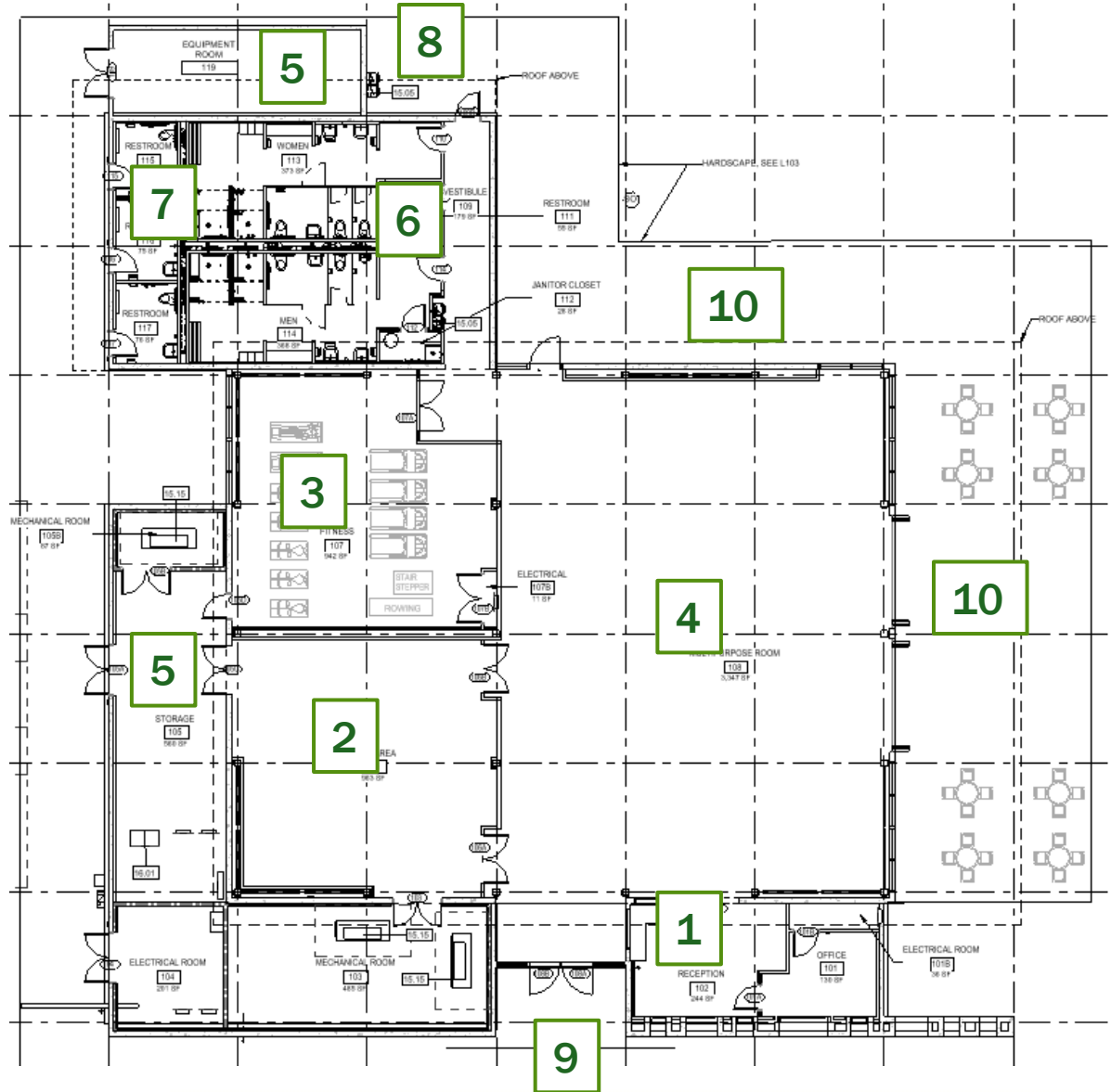
- 1 10,000 - 20,000 SF Community Center
- 2 Splash Play Area
- 3 Playground
- 4 Fitness Area
- 5 Dog Park
- 6 Shelter
- 7 Artificial Turf Multipurpose Playfield
- 8 Pickleball Courts
- 9 Open Green Space
- 10 Passive Open Green Space
- 11 Maintenance Building
- 12 Restroom
- 13 Pathways
- 14 Paved Parking Lot
- 15 Drop-off Area
- 16 Overflow Grass Parking Lot
- 17 Pedestrian Access Point
- 18 Pedestrian Crosswalks
- 19 Dog-Washing Station

Proposed Park Elements Legend

- 1 10,000 - 20,000 SF Community Center
- 2 Splash Play Area
- 3 Playground
- 4 Fitness Area
- 5 Dog Park
- 6 Shelter
- 7 Artificial Turf Multipurpose Playfield
- 8 Pickleball Courts
- 9 Open Green Space
- 10 Passive Open Green Space
- 11 Maintenance Building
- 12 Restroom
- 13 Pathways
- 14 Paved Parking Lot
- 15 Drop-off Area
- 16 Overflow Grass Parking Lot
- 17 Pedestrian Access Point
- 18 Pedestrian Crosswalks
- 19 Dog-Washing Station



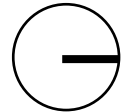
COMMUNITY CENTER



Major Program Spaces:

- 1 Entry / Lobby / Admin
- 2 Indoor Play
- 3 Fitness
- 4 Multi-Purpose Room
- 5 Support Spaces
- 6 Restrooms
- 7 Family Restrooms
- 8 Outdoor Drinking Fountain
- 9 Covered Drop-off
- 10 Covered Porch

Community Center
Area: 9,458 sf



COMMUNITY CENTER



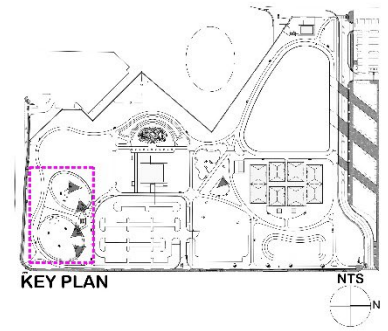
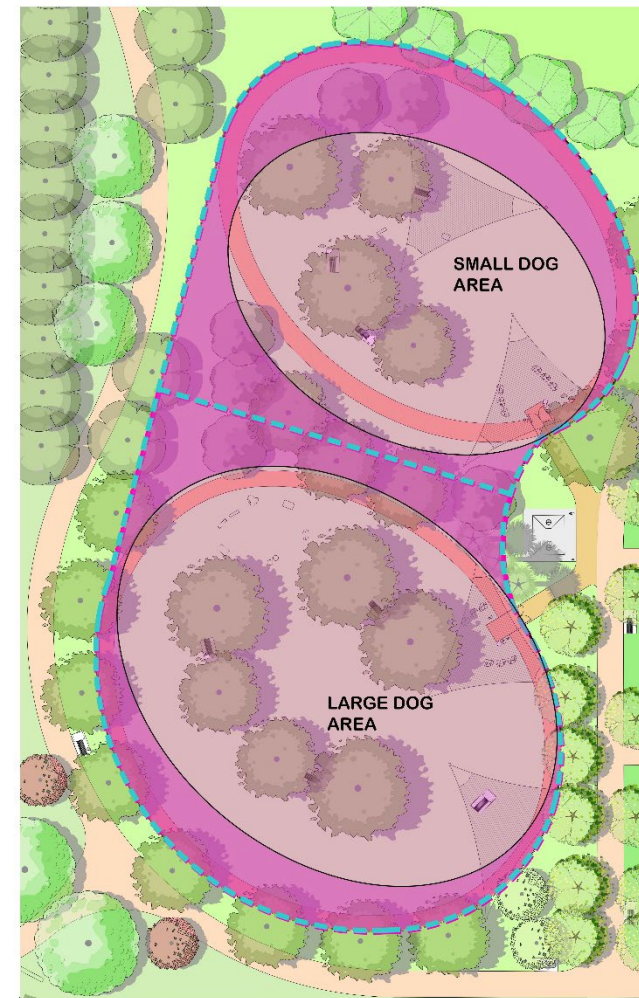
- Reduced building height and modulated fenestration to reduce massive scale

COMMUNITY CENTER



- Collaborated with the office of Historic Preservation to incorporate opportunities for curated features that recognize the significant history of this site
- Added sound attenuation to reduce echo

EXPANDED DOG PARK AREA



ORIGINAL DOG PARK

SMALL DOG PARK
13,200 SF
.30 ACRES

LARGE DOG PARK
20,000 SF
.46 ACRES

ENLARGED DOG PARK

SMALL DOG PARK | 40% LARGER
22,000 SF
.50 ACRES

LARGE DOG PARK | 30% LARGER
27,760 SF
.64 ACRES

- Expanded dog park area

NEXT STEPS

- 2024
 - 100% Construction Drawings
 - FAA Final Approval
 - Development Review Committee Approval
- 2025
 - Permitting Dry-runs
 - Bidding and Award
 - Start Construction
- 2026
 - Complete Construction



THANK YOU!

