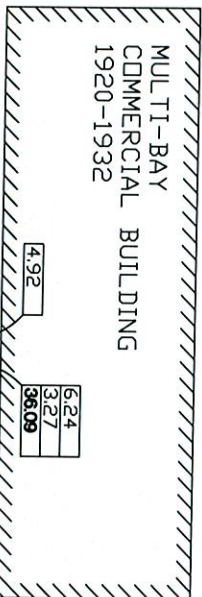


NW 9th STREET

MULTI-BAY
COMMERCIAL BUILDING
1920-1932



SB-10
5.89
(0 TO 2 FT BLS)

PROPERTY

3.79
8.37
1.22

SB-14

23.60
48.87
77.14

SB-11/CP-1

SB-13

12.15
2.33
0.30

SB-15

396.07
280.99
(0 TO 2 FT BLS)

SB-12/CP-2

42.67
1.51
1.19

SB-16

SB-D
4.83

SB-2
5.75
(0 TO 2 FT BLS)

SB-F
3.94

NW 19th TERRACE

SB-9
5.63
(0 TO 2 FT BLS)

PROPERTY

SB-3
5.63
(0 TO 2 FT BLS)

PROPERTY

SB-8
5.50
(0 TO 2 FT BLS)

SB-7
5.56
(0 TO 2 FT BLS)

PROPERTY

SB-4
6.03
(0 TO 2 FT BLS)

MW

NW 20th AVENUE

SOIL BERM

SOIL BERM

PROPERTY NW 8th STREET

SOIL BERM

SB-7
5.56
(0 TO 2 FT BLS)

PROPERTY



LEGEND:
0' 50'
SCALE:
0 TO 0.5- FT BLS
0.5 TO 2- FT BLS
2 TO 4- FT BLS

6.24= DIOXIN/
FURANS (ng/kg)
▲ = SOIL BORING
● = EXISTING
MONITORING WELL



ENVIRONMENTAL SERVICES
5721 NW 14th LAKES DRIVE
MIAMI LAKES, FLORIDA 33054
TEL: 305-574-6800 FAX:
305-574-3004 TOLL

DURES IN FILL
HOUSING PROJECT
FORT LAUDERDALE, FLORIDA

DIOXIN/FURAN
SOIL RESULTS

DIST# 14/08/15
PROJECT: 2013-300
DRAWN BY: NV
CADD FILE: T13
SCALE: AS NOTED

FIGURE
3

TABLE 1
DIOXIN/FURAN CONGENER SUMMARY RESULTS
POST-SOURCE REMOVAL CONFIRMATION SOIL SAMPLING EVENT - DECEMBER 2014 FEBRUARY 2015

DURRS NEIGHBORHOOD
8TH STREET VACANT LOT
FORT LAUDERDALE, FLORIDA

Congener	TEF	SB-A (8th Street Lot)	Converted Results*	SB-B (8th Street Lot)	Converted Results*	SB-C (8th Street Lot)	Converted Results*	SB-D (8th Street Lot)	Converted Results*	SB-E (8th Street Lot)	Converted Results*	SB-F (8th Street Lot)	Converted Results*
2,3,7,8-TCDD	1	1.9	1.9	0.18	0.175	0.210	0.21	0.485	0.485	0.42	0.415	0.15	0.15
1,2,3,7,8-PeCDD	1	14.00	14	0.61	0.61	2.00	2	0.25	0.245	0.43	0.43	0.68	0.68
1,2,3,4,7,8-HxCDD	0.1	26.00	2.6	0.93	0.093	2.70	0.27	0.37	0.037	0.32	0.032	1.10	0.11
1,2,3,6,7,8-HxCDD	0.1	150.00	15	8.90	0.89	11.00	1.1	0.81	0.081	6.50	0.65	3.40	0.34
1,2,3,7,8,9-HxCDD	0.1	74.00	7.4	3.00	0.3	6.30	0.63	0.93	0.093	2.70	0.27	2.00	0.2
1,2,3,4,6,7,8-HpCDD	0.01	450.00	4.5	67.00	0.67	140.00	1.4	11.00	0.11	190.00	1.9	130.00	1.3
OCDD	0.0001	520.00	0.052	310.00	0.031	910.00	0.091	98.00	0.0098	4200.00	0.42	1500.00	0.15
2,3,7,8-TCDF	0.1	29.00	2.9	2.30	0.23	2.10	0.21	0.41	0.041	0.38	0.0375	0.44	0.044
1,2,3,7,8-PeCDF	0.05	14.00	0.7	0.50	0.025	2.90	0.145	0.24	0.012	0.35	0.0175	0.46	0.023
2,3,4,7,8-PeCDF	0.5	580.00	290	1.60	0.8	15.00	7.5	6.00	3	0.73	0.365	0.87	0.435
1,2,3,4,7,8-HxCDF	0.1	42.0	4.2	1.00	0.1	6.40	0.64	0.90	0.09	0.54	0.054	0.74	0.074
1,2,3,6,7,8-HxCDF	0.1	130.00	13	1.90	0.19	8.30	0.83	1.70	0.17	0.28	0.0275	0.93	0.093
2,3,4,6,7,8-HxCDF	0.1	240.00	24	4.00	0.4	14.00	1.4	3.60	0.36	0.79	0.079	1.40	0.14
1,2,3,7,8,9-HxCDF	0.1	26.00	2.6	0.51	0.051	1.90	0.19	0.36	0.0355	0.17	0.017	0.17	0.017
1,2,3,4,6,7,8-HpCDF	0.01	310.00	3.1	34.00	0.34	50.00	0.5	5.30	0.053	33.00	0.33	17.00	0.17
1,2,3,4,7,8,9-HpCDF	0.01	10.00	0.1	1.10	0.011	3.30	0.033	0.47	0.00465	2.20	0.022	0.99	0.0099
OCDF	0.0001	140.00	0.014	27.00	0.0027	54.00	0.0054	6.30	0.00063	270.00	0.027	53.00	0.0053
Sum Total Concentration of Weighted Dioxin/Furan Congeners =			386.07		4.92		17.15		4.83		5.09		3.94

Note: Values reported in nanograms per kilogram (ng/Kg)