

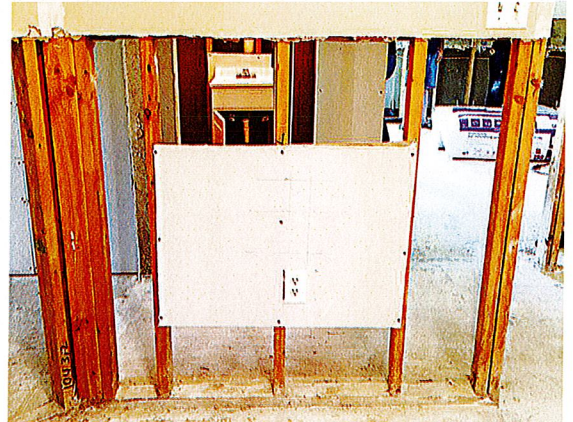
State of Florida Sheltering and Temporary Essential Power Program



ELIGIBLE WORK

The program offers key basic initial work that includes emergency clean-up and minor essential repairs to allow survivors to safely shelter at home as recovery continues. Emergency includes the following:

- Work necessary to provide essential electrical supply, HVAC, and hot water;
- Work necessary to restore natural gas supply if required for HVAC, hot water, and/or food preparation;
- Work necessary to provide potable water supply – this may include well decontamination if only source of potable water;
- Weatherproofing to include roof, wall, and windows;
- Securing broken windows, and repair or replacement of nonfunctioning exterior and/or necessary interior doors;
- Removal of disaster-related debris to curbside necessary to safely enter, inspect, and perform eligible emergency work, and safely shelter in place;
- Minor interior and/or exterior work to provide safe access (e.g. stairs, ramps) and living environment;
- Drywall replacement for the purpose of safely covering any exposed electrical work, or to ensure the home is properly insulated;
- Ensure one useable bathroom vanity, sink, toilet, and tank;
- Ensure functional kitchen facilities to include minimal cooking and refrigeration appliances necessary to shelter in place (not to exceed \$500) and/or mini fridges for doctor prescribed medical needs;
- Ensure safe and adequate sleeping accommodations for all household members;
- Items and work necessary to ensure safe shelter for individuals with access and functional needs.



The contractor will make sure the electrical system is safe and working. This patch of drywall with the electrical outlet is temporary but functional.



The kitchen sink is framed in and missing cabinets but functional.



Exterior doors will provide a secure entry and exit.

