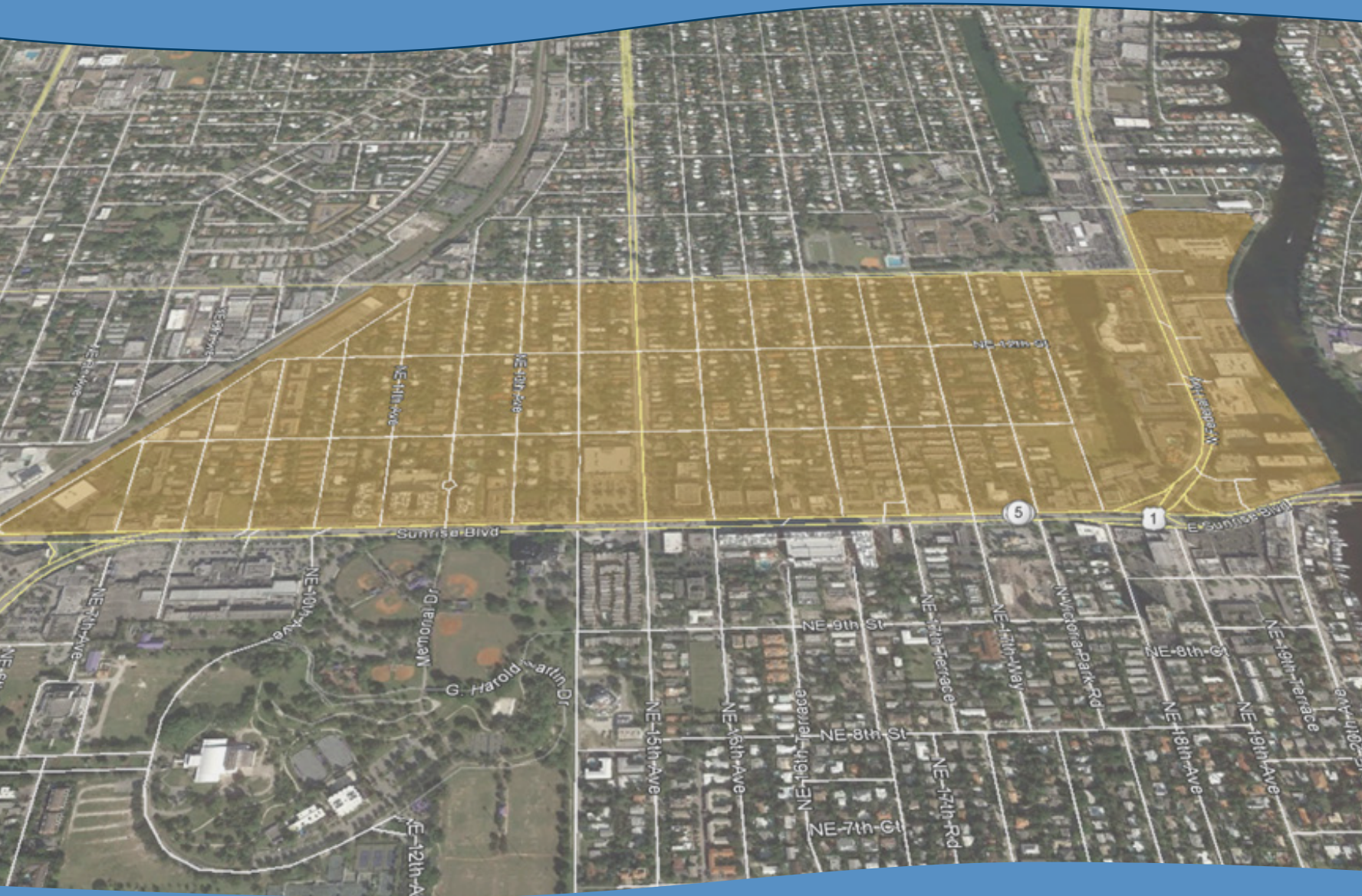


Lake Ridge Neighborhood Mobility Masterplan 2015 - 2025



FINAL REPORT

Prepared by:
TYLIN INTERNATIONAL
November 2015



NE 15th Avenue

36. Develop and evaluate alternative concepts including traffic circles for “road diet” project on NE 15th Avenue from NE 11th Street to NE 13th Street. Evaluate installing pedestrian actuated signals at NE 11th Street and NE 12th Street. Assess drainage issues at the NE 11th Street/NE 15th Avenue intersection and incorporate appropriate improvements during the design and construction phase.

Figure 7-6 shows a conceptual layout for the road diet project along NE 15th Avenue while **Figure 7-7** shows existing typical section and proposed conceptual typical section for NE 15th Avenue. It should be noted that the lane configuration in the proposed layout is different for each block along NE 15th Avenue.

Figure 7-6: Proposed Conceptual Layout, NE 15th Avenue "Road Diet" Project

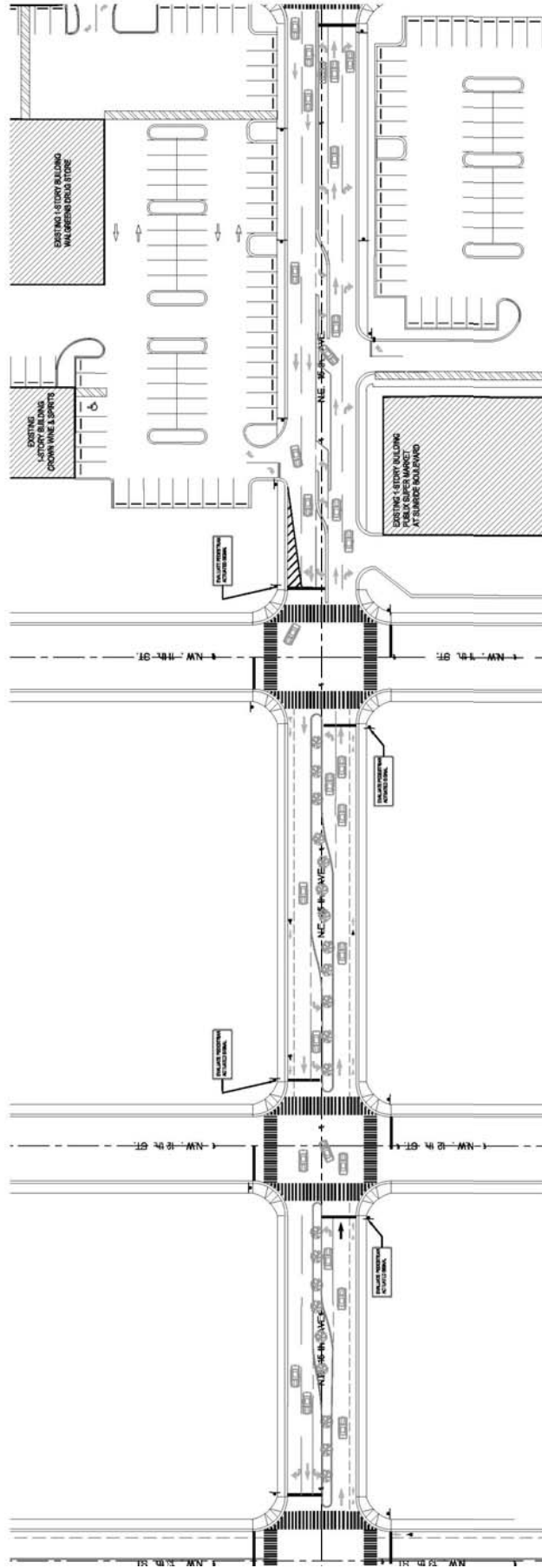
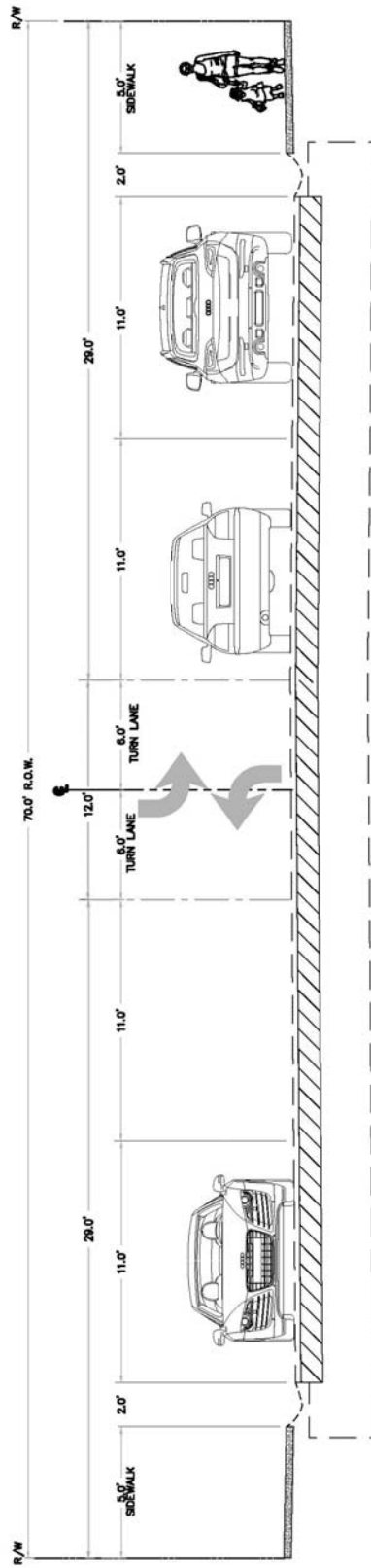


Figure 7-7: Existing and Proposed Conceptual Typical Section, NE 15th Avenue "Road Diet" Project



EXISTING TYPICAL SECTION N.E. 15TH AVENUE FROM N.E. 11TH STREET TO N.E. 12TH STREET
N.T.S.



PROPOSED CONCEPTUAL TYPICAL SECTION N.E. 15TH AVENUE FROM N.E. 11TH STREET TO N.E. 12TH STREET
N.T.S.

Publix/Walgreens Plaza

- 37. Move the Walgreens driveway to the north and eliminate the left-turn movement exiting from Publix and Walgreens by providing a median to improve channelization and reduce conflicting vehicular movements and enhance safety while maintaining major access points. **Figure 7-8** illustrates the conceptual lane and median configuration on NE 15th Avenue between Sunrise Boulevard and NE 11th Street.

Figure 7-8: Proposed Conceptual Layout, NE 15th Avenue at Publix/Walgreens Plaza

