



LEGEND MAY 7, 2013
 PROPOSED FLOATING DOCK
 EXISTING FIXED DOCK
 PROVIDED BY TYLER CHAPPELL PH-2

THIS DRAWING AND ALL APPURTENANT MATTER CONTAINS INFORMATION PROPRIETARY TO THE CHAPPELL GROUP, INC. AND IS LOANED SUBJECT TO RETURN UPON DEMAND AND MUST NOT BE REPRODUCED, COPIED, LOANED, REVEALED, NOR LISTED FOR ANY PURPOSE OTHER THAN THAT FOR WHICH IT IS SPECIFICALLY FURNISHED WITHOUT EXPRESSED WRITTEN CONSENT OF THE CHAPPELL GROUP, INC.
 © THE CHAPPELL GROUP, INC. 2013

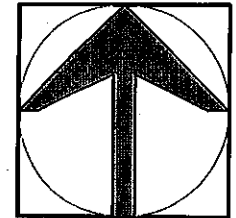
THE Chappell GROUP INC.
 714 East McNab Road
 Pompano Beach, Florida 33060
 tel. 954.782.1908
 fax. 954.782.1108
 www.thechappellgroup.com

- Environmental Consultants
- Marina & Wetland Permitting
- Mitigation Design & Monitoring
- T&E Species Surveys
- Phase I ESAs

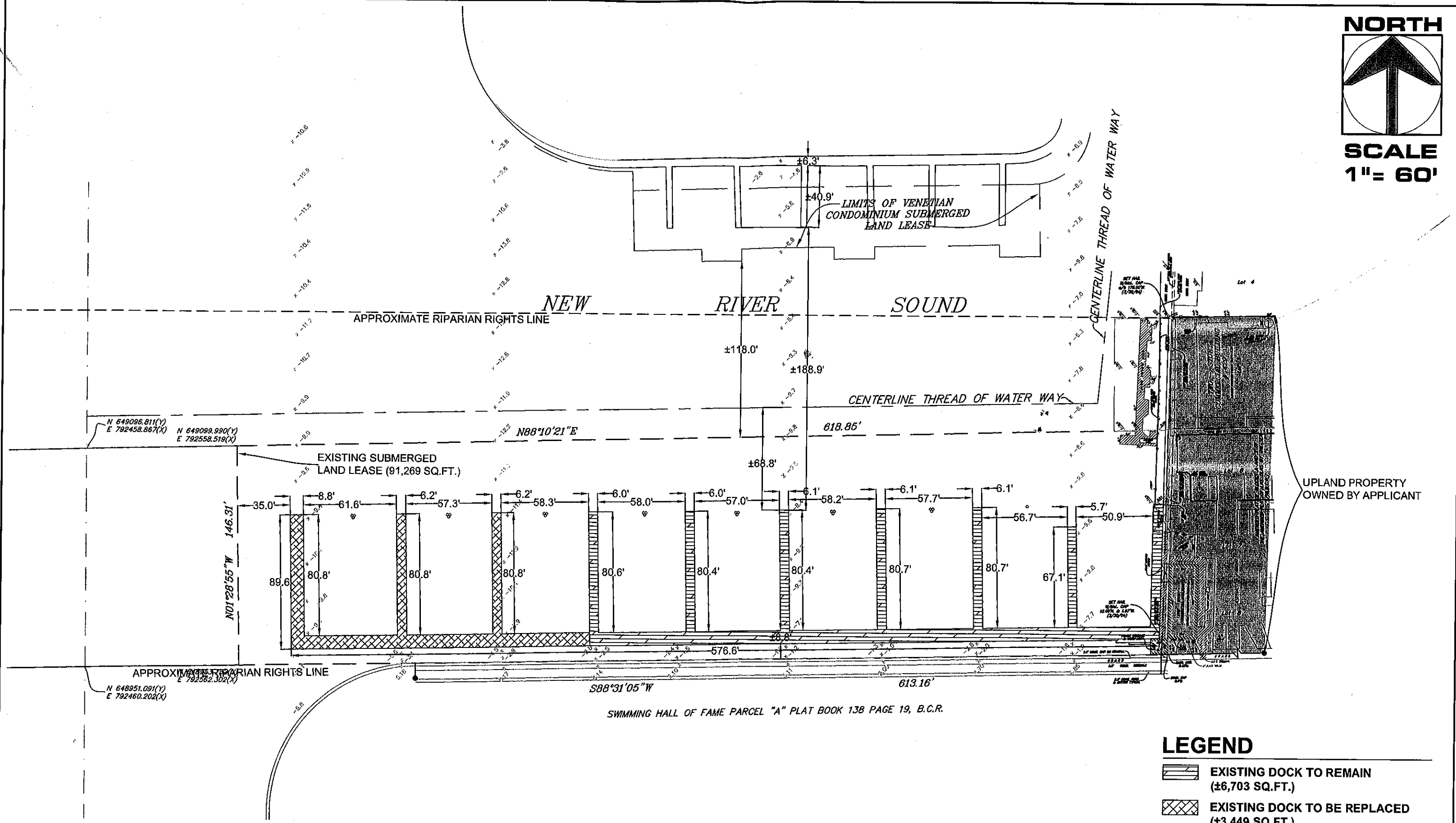
HALL OF FAME MARINA
 PREPARED FOR:
 WESTREC MARINAS

| | | |
|--------------------------|-------------|----------|
| AERIAL EXHIBIT | | |
| Date: 3/7/13 | Sheet: 3 | of: 3 |
| Proj No.: 06-0012.002 | | |

NORTH



SCALE
1" = 60'



UPLAND PROPERTY OWNED BY APPLICANT

LEGEND

- EXISTING DOCK TO REMAIN (±6,703 SQ.FT.)
- EXISTING DOCK TO BE REPLACED (±3,449 SQ.FT.)

THIS DRAWING AND ALL APPURTENANT MATTER CONTAINS INFORMATION PROPRIETARY TO THE CHAPPELL GROUP, INC. AND IS LOANED SUBJECT TO RETURN UPON DEMAND AND MUST NOT BE REPRODUCED, COPIED, LOANED, REVEALED, NOR LISTED FOR ANY PURPOSE OTHER THAN THAT FOR WHICH IT IS SPECIFICALLY FURNISHED WITHOUT EXPRESSED WRITTEN CONSENT OF THE CHAPPELL GROUP, INC.
© THE CHAPPELL GROUP, INC. 2013

THE Chappell GROUP INC.
714 East McNab Road
Pompano Beach, Florida 33060
tel. 954.782.1908
fax. 954.782.1108
www.thechappellgroup.com

- Environmental Consultants
- Marina & Wetland Permitting
- Mitigation Design & Monitoring
- T&E Species Surveys
- Phase I ESAs

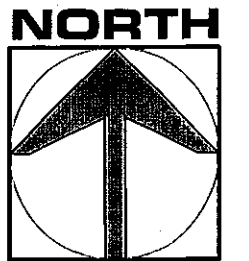
HALL OF FAME MARINA

PREPARED FOR:
WESTREC MARINAS

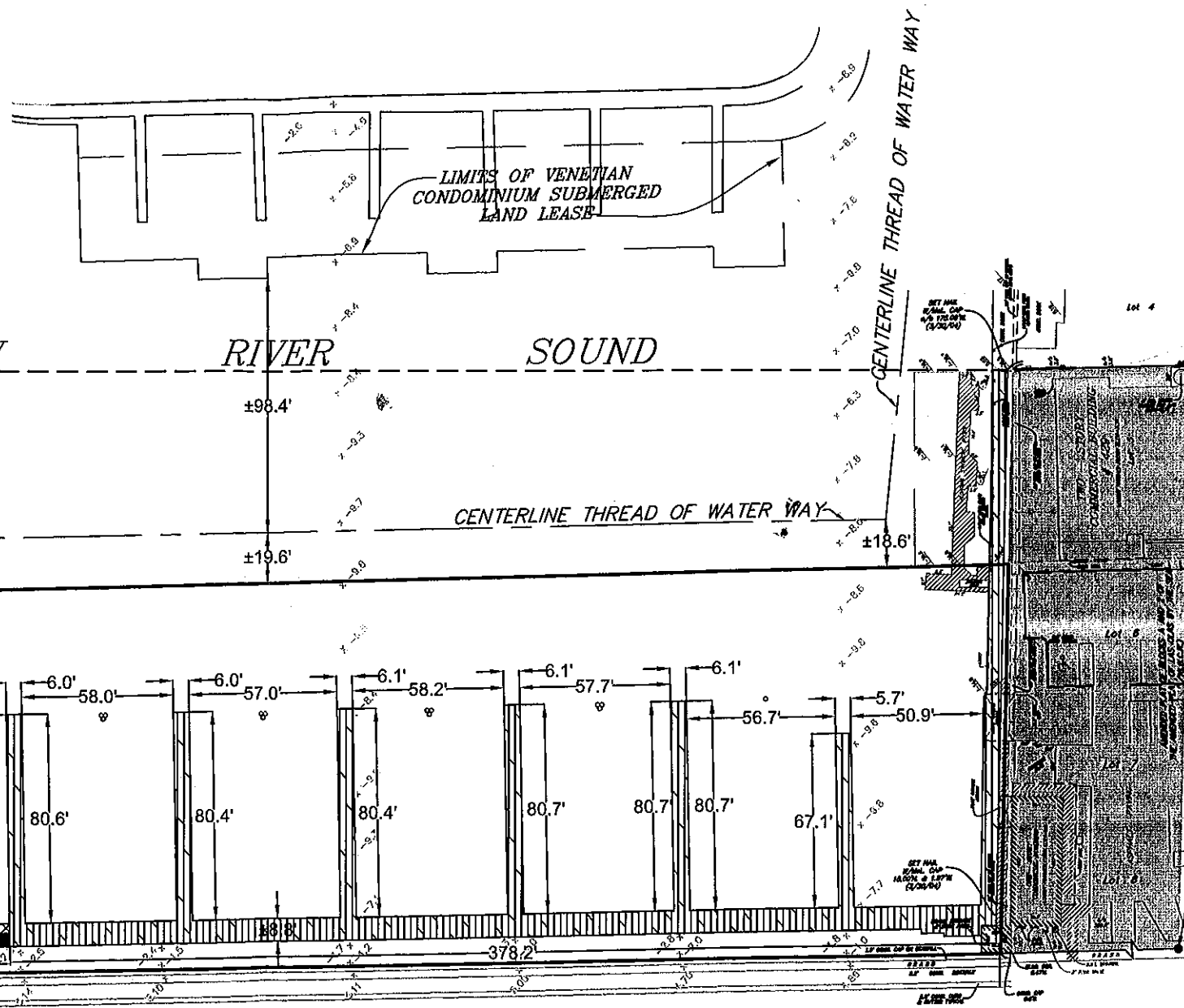
EXISTING CONDITIONS

| | | |
|--------------------------|-------------|----------|
| Date: 3/7/13 | Sheet: 1 | of: 3 |
| Proj No.: 06-0012.002 | | |

| PROPOSED STRUCTURES | | PROPOSED STRUCTURES | |
|---------------------|-----------------------------|---------------------|-----------------------------|
| STRUCTURE | DISTANCE FROM PROPERTY LINE | STRUCTURE | DISTANCE FROM PROPERTY LINE |
| 1 | ±411.8' | 7 | ±612.4' |
| 2 | ±494.3' | 8 | ±690.3' |
| 3 | ±618.5' | 9 | ±459.2' |
| 4 | ±696.4' | 10 | ±695.0' |
| 5 | ±615.4' | 11 | ±692.0' |
| 6 | ±693.3' | | |



SCALE
1" = 60'



UPLAND PROPERTY OWNED BY APPLICANT

LEGEND

- PROPOSED FLOATING DOCK (±6,250 SQ.FT.)
- EXISTING FIXED DOCK (±7,385 SQ.FT.)

THIS DRAWING AND ALL APPURTENANT MATTER CONTAINS INFORMATION PROPRIETARY TO THE CHAPPELL GROUP, INC. AND IS LOANED SUBJECT TO RETURN UPON DEMAND AND MUST NOT BE REPRODUCED, COPIED, LOANED, REVEALED, NOR LISTED FOR ANY PURPOSE OTHER THAN THAT FOR WHICH IT IS SPECIFICALLY FURNISHED WITHOUT EXPRESSED WRITTEN CONSENT OF THE CHAPPELL GROUP, INC.
© THE CHAPPELL GROUP, INC. 2013

THE Chappell GROUP INC.
714 East McNab Road
Pompano Beach, Florida 33060
tel. 954.782.1908
fax. 954.782.1108
www.thechappellgroup.com

- Environmental Consultants
- Marina & Wetland Permitting
- Mitigation Design & Monitoring
- T&E Species Surveys
- Phase I ESAs

HALL OF FAME MARINA

PREPARED FOR:
WESTREC MARINAS

PROPOSED CONDITIONS

| | | |
|--------------------------|--------------------|-----------------|
| Date: 3/7/13 | Sheet: 2 | of: 3 |
| Proj No.: 06-0012.002 | | |