

City of Fort Lauderdale



Meeting Minutes

Tuesday, March 2, 2021

6:00 PM

City Commission Chambers
100 North Andrews Avenue, Fort Lauderdale, FL 33301

Access Via:

<https://fortlauderdale.legistar.com/Calendar.aspx>

www.fortlauderdale.gov/fltv

www.youtube.com/cityoffortlauderdale

Cable Television - Comcast Channel 78 and AT&T U-verse Channel 99

City Commission Regular Meeting

FORT LAUDERDALE CITY COMMISSION

DEAN J. TRANTALIS Mayor

STEVEN GLASSMAN Vice Mayor - Commissioner - District II

HEATHER MORAITIS Commissioner - District I

ROBERT L. McKINZIE Commissioner - District III

BEN SORENSEN Commissioner - District

CHRIS LAGERBLOOM, City Manager

JOHN HERBST, City Auditor

JEFFREY A. MODARELLI, City Clerk

ALAIN E. BOILEAU, City Attorney

CALL TO ORDER

Mayor Trantalis called the meeting to order at 6:11 p.m.

Pledge of Allegiance

Denea Stephens

ROLL CALL

Present: 5 - Commissioner Heather Moraitis, Vice Mayor Steven Glassman (participated telephonically), Commissioner Robert L. McKinzie (participated telephonically), Commissioner Ben Sorensen (participated telephonically) and Mayor Dean J. Trantalis

QUORUM ESTABLISHED

Also Present: City Manager Chris Lagerbloom, City Clerk Jeffrey A. Modarelli, City Attorney Alain E. Boileau and City Auditor John Herbst (participated telephonically)

ANNOUNCEMENTS

Mayor Trantalis announced details regarding the virtual format of this meeting, including how members of the public can view and participate.

AGENDA ANNOUNCEMENT

Mayor Trantalis announced the following modifications to the Agenda:

Agenda Item Added:

WALK-ON - Resolution Approving a Request for a Special Permit to Extend Construction Hours for the Broward County Convention Center Subject to the Requirements of Section 17-10 - Construction of Large or Complex Projects (Transportation and Non-Transportation) of the City of Fort Lauderdale's Code of Ordinances District - (Commission District 4)

A copy is attached to these minutes.

Approval of MINUTES and Agenda

[21-0249](#)

Minutes for February 2, 2021 Commission Regular Meeting and February 16, 2021 Commission Conference Meeting - (Commission Districts 1, 2, 3 and 4)

Commissioner McKinzie made a motion to approve this item and was seconded by Commissioner Sorensen.

APPROVED

Aye: 5 - Commissioner Sorensen, Commissioner Moraitis, Vice Mayor Glassman, Commissioner McKinzie and Mayor Trantalis

PRESENTATIONS**PRES- [21-0107](#)
1**

Commissioner Moraitis will present a Proclamation declaring March 8-14, 2021 as Women in Aviation Worldwide Week in the City of Fort Lauderdale

Rufus James, Fort Lauderdale Executive Airport (FXE) Manager, joined Commissioner Moraitis at the podium. Commissioner Moraitis presented a Proclamation declaring *March 8-14, 2021 as Women in Aviation Worldwide Week in the City of Fort Lauderdale*, reading the Proclamation in its entirety. Commissioner Moraitis presented certificates to young ladies from the *Boys and Girls Club* working toward aviation industry careers. Sharon Curley, District 1 Resident and aircraft pilot, commented on aviation opportunities and benefits for women.

PRESENTED**PRES- [21-0201](#)
2**

Commissioner Sorensen will present a Proclamation declaring March 2021 as Red Cross Month in the City of Fort Lauderdale

Commissioner Sorensen presented a Proclamation declaring *March 2021 as Red Cross Month in the City of Fort Lauderdale*, reading the Proclamation in its entirety. American Red Cross of Broward County Board Chairperson Cindy Imperato accepted the Proclamation and thanked the Commission for this recognition. Mayor Trantalis thanked Ms. Imperato for *Red Cross'* work in the community.

PRESENTED**PRES- [21-0225](#)
3**

Vice Mayor Glassman will present a Proclamation declaring March 2021 as Bleeding Disorders Awareness Month in the City of Fort Lauderdale

Vice Mayor Glassman read a Proclamation declaring *March 2021 as Bleeding Disorders Awareness Month in the City of Fort Lauderdale*, reading the Proclamation in its entirety. Mayor Trantalis presented the Proclamation to Deborah Adams, Executive Director, Florida Hemophilia Association, and Kim Madeiros, Development Director, Florida Hemophilia Association.

PRESENTED**CONSENT AGENDA PUBLIC COMMENT**

Mayor Trantalis explained the procedure for members of the public wishing to speak on Consent Agenda items.

CONSENT AGENDA

Mayor Trantalis announced the following Consent Agenda items had been pulled by Commission Members for separate discussion:

CP-4 Commissioner Moraitis

CONSENT MOTION

Approval of the Consent Agenda

Commissioner Sorensen made a motion to approve this item and was seconded by Commissioner Moraitis.

Approve the Consent Agenda

Aye: 5 - Commissioner Sorensen, Commissioner Moraitis, Vice Mayor Glassman, Commissioner McKinzie and Mayor Trantalis

CM-1 [21-0197](#)

Motion Approving an Event Agreement and Related Road Closure Exemptions with Mother's Against Drunk Driving, Inc. for 2021 Walk Like MADD & MADD Dash Fort Lauderdale 5k - (Commission Districts 2 and 4)

APPROVED

Aye: 5 - Commissioner Sorensen, Commissioner Moraitis, Vice Mayor Glassman, Commissioner McKinzie and Mayor Trantalis

CM-2 [21-0135](#)

Motion Accepting a Grant of \$2,000 from the United States Tennis Association (USTA) Florida Section Foundation for Tennis Equipment - (Commission Districts 1, 2, 3 and 4)

APPROVED

Aye: 5 - Commissioner Sorensen, Commissioner Moraitis, Vice Mayor Glassman, Commissioner McKinzie and Mayor Trantalis

CM-3 [21-0138](#)

Motion Accepting a Grant of \$4,150 from the United States Tennis Association (USTA) Florida Section Foundation for an Adaptive Wheelchair Tennis Program - (Commission Districts 1, 2, 3 and 4)

APPROVED

Aye: 5 - Commissioner Sorensen, Commissioner Moraitis, Vice Mayor Glassman, Commissioner McKinzie and Mayor Trantalis

CM-4 [21-0139](#)

Motion Accepting a Grant of \$5,662 from the United States Tennis

Association (USTA) Florida Section Foundation for Tennis Program Support - (Commission Districts 1, 2, 3 and 4)

APPROVED

Aye: 5 - Commissioner Sorensen, Commissioner Moraitis, Vice Mayor Glassman, Commissioner McKinzie and Mayor Trantalis

CM-5 [21-0196](#)

Motion Accepting a Grant of \$50,000 from the Florida Recreation Development Assistance Program (FRDAP) for Hortt Park Playground - (Commission District 4)

APPROVED

Aye: 5 - Commissioner Sorensen, Commissioner Moraitis, Vice Mayor Glassman, Commissioner McKinzie and Mayor Trantalis

CM-6 [21-0243](#)

Motion Accepting FY2020 Florida Department of Transportation Grant Award Increase - \$20,000 - (Commission Districts 1, 2, 3 and 4)

APPROVED

Aye: 5 - Commissioner Sorensen, Commissioner Moraitis, Vice Mayor Glassman, Commissioner McKinzie and Mayor Trantalis

CM-7 [21-0178](#)

Motion Authorizing Execution of the First Amendment to a Revocable License with MQMF Las Olas Owner, LLC for Temporary Right-of-Way Closures on SE 2nd Street, SE 5th Avenue, and East Las Olas Boulevard, in Association with the Eden Las Olas Development Located at 419 SE 2nd Street and Consent to Assignment of Revocable License Agreement - (Commission District 4)

APPROVED

Aye: 5 - Commissioner Sorensen, Commissioner Moraitis, Vice Mayor Glassman, Commissioner McKinzie and Mayor Trantalis

CONSENT RESOLUTION

CR-1 [21-0239](#)

Resolution Approving Pay Schedule for Fiscal Year 2021 for the Collective Bargaining Agreement between the City of Fort Lauderdale and the Fort Lauderdale Professional Firefighters, Inc., International Association of Firefighters (IAFF), AFL-CIO-CLC, Local 765 effective October 1, 2020 through September 30, 2021 and Incorporating the Pay Schedule into the Collective Bargaining Agreement as Schedule A - (Commission Districts 1, 2, 3 and 4)

ADOPTED

Aye: 5 - Commissioner Sorensen, Commissioner Moraitis, Vice Mayor Glassman, Commissioner McKinzie and Mayor Trantalis

- CR-2** [21-0240](#) Resolution Approving Pay Schedule for Fiscal Year 2021 for the Collective Bargaining Agreement between the City of Fort Lauderdale and the Fort Lauderdale Professional Firefighters, Inc., International Association of Firefighters (IAFF), AFL-CIO-CLC, Local 765 - Battalion Chiefs Effective October 1, 2020 through September 30, 2021 and Incorporating the Pay Schedule into the Collective Bargaining Agreement as Schedule A - (Commission Districts 1, 2, 3 and 4)

ADOPTED

Aye: 5 - Commissioner Sorensen, Commissioner Moraitis, Vice Mayor Glassman, Commissioner McKinzie and Mayor Trantalis

- CR-3** [21-0132](#) Resolution Imposing Special Assessment Liens for Lot Clearing - (Commission Districts 1, 2, 3 and 4)

ADOPTED

Aye: 5 - Commissioner Sorensen, Commissioner Moraitis, Vice Mayor Glassman, Commissioner McKinzie and Mayor Trantalis

- CR-4** [21-0034](#) Resolution Approving SW Riverside Drive and SW 20th Avenue to be also known as "Coach Skinner Avenue" between SW 5th Place and SW 9th Street - (Commission District 4)

ADOPTED

Aye: 5 - Commissioner Sorensen, Commissioner Moraitis, Vice Mayor Glassman, Commissioner McKinzie and Mayor Trantalis

- CR-5** [21-0186](#) Resolution Supporting Broward County Traffic Engineering Division to post "NO THRU TRUCKS" signage on Riverland Road at State Road 7 and Davie Boulevard - (Commission Districts 3 and 4)

ADOPTED

Aye: 5 - Commissioner Sorensen, Commissioner Moraitis, Vice Mayor Glassman, Commissioner McKinzie and Mayor Trantalis

- CR-6** [21-0195](#) Resolution Supporting Broward County Traffic Engineering Division to Post "NO THRU TRUCKS" Signage at the Southwest Corner of East Sunrise Boulevard and NE 16th Avenue - (Commission District 2)

ADOPTED

Aye: 5 - Commissioner Sorensen, Commissioner Moraitis, Vice Mayor Glassman, Commissioner McKinzie and Mayor Trantalis

- CR-7** [21-0092](#) Resolution Approving the Consolidated Budget Amendment to Fiscal Year 2021 - Appropriation - (Commission Districts 1, 2, 3 and 4)

ADOPTED

Aye: 5 - Commissioner Sorensen, Commissioner Moraitis, Vice Mayor Glassman, Commissioner McKinzie and Mayor Trantalis

- CR-8** [21-0148](#) Resolution Approving Fiscal Year 2021 Not For Profit Grant Participation Agreement with The Stranahan House, Inc., and Escrow Agreement with The Stranahan House, Inc., and Tripp Scott, P.A. - \$100,000 - (Commission Districts 1, 2, 3 and 4)

ADOPTED

Aye: 5 - Commissioner Sorensen, Commissioner Moraitis, Vice Mayor Glassman, Commissioner McKinzie and Mayor Trantalis

CONSENT PURCHASE

- CP-1** [21-0187](#) Motion Approving Change Order No. 10 for \$65,599 for Electrical Upgrades to the North Galt Shops Streetscape and Parking Improvements Project - Sagaris Corp - (Commission District 1)

APPROVED

Aye: 5 - Commissioner Sorensen, Commissioner Moraitis, Vice Mayor Glassman, Commissioner McKinzie and Mayor Trantalis

- CP-2** [21-0199](#) Motion Approving Change Order No. 1 for \$29,900 for Construction Engineering Inspection services to the North Galt Shops Streetscape and Parking Improvements Project, Task Order No. 5 - Calvin, Giordano & Associates, Inc. - (Commission District 1)

APPROVED

Aye: 5 - Commissioner Sorensen, Commissioner Moraitis, Vice Mayor Glassman, Commissioner McKinzie and Mayor Trantalis

- CP-3** [21-0200](#) Motion Approving Agreements for Purchase of Demolition Services - AlliedBean Demolition, Inc. and The BG Group, LLC - \$600,000 - (Commission Districts 1, 2, 3 and 4)

APPROVED

Aye: 5 - Commissioner Sorensen, Commissioner Moraitis, Vice Mayor Glassman, Commissioner McKinzie and Mayor Trantalis

- CP-4** [21-0208](#) Motion Approving Agreement for Riverwalk Water Trolley -

Operations and Maintenance - Water Taxi of Fort Lauderdale LLC - \$735,000 - (Commission Districts 2 and 4)

Commissioner Moraitis inquired about *Water Taxi* ridership and the opportunity to utilize grants, pass-through funding and cost recovery from Broward County, similar to the *Sun Trolley*.

In response to Commissioner Moraitis' questions, Ben Rogers, Transportation and Mobility (TAM) Department Director, explained 2018 ridership was approximately 46,000 and in 2019 ridership was approximately 56,000. The *Water Taxi* was not operating for a majority of 2020 due to COVID. Staff is pursuing grant funding with the Florida Department of Transportation (FDOT). *Water Taxi* funding has been a historical practice since the City ended its relationship with the Transportation Management Association (TMA).

In response to Commission Moraitis' question, Mr. Rogers explained the free portion of *Water Taxi* ridership is along the *New River* route illustrated as presented.

A copy has been made part of the backup to this Agenda item.

The City funds the free ridership portion of the *Water Taxi*. Should the Commissioner desire to modify the schedule, the related process includes a public hearing. City Manager Lagerbloom noted all multi-year contracts are subject to appropriation. Mayor Trantalis pointed out the positive aspects of the *Water Taxi*.

Commissioner Moraitis made a motion to approve this item and was seconded by Vice Mayor Glassman.

APPROVED

Aye: 5 - Commissioner Sorensen, Commissioner Moraitis, Vice Mayor Glassman, Commissioner McKinzie and Mayor Trantalis

CP-5 [21-0215](#)

Motion Approving Increase in Funds for Sexual Assault Response Team Kit Testing - Bode Cellmark Forensics, Inc. - \$16,950 - (Commission Districts 1, 2, 3 and 4)

APPROVED

Aye: 5 - Commissioner Sorensen, Commissioner Moraitis, Vice Mayor Glassman, Commissioner McKinzie and Mayor Trantalis

RESOLUTIONS

R-1 [21-0251](#)

Appointment of Board and Committee Members - (Commission

Districts 1, 2, 3 and 4)

City Clerk Jeffrey Modarelli read the names of the Board and Committee nominees for appointment and/or reappointment at the upcoming March 16, 2021 Commission Regular Meeting.

City Clerk Modarelli read into the record the names of Board and Committee appointments and/or reappointments for Agenda item R-1.

Commissioner Sorensen introduced this Resolution which was read by title only.

ADOPTED

Aye: 5 - Commissioner Sorensen, Commissioner Moraitis, Vice Mayor Glassman, Commissioner McKinzie and Mayor Trantalis

R-2 [21-0219](#)

Resolution Rescinding Resolution No. 21-07; Rescinding the Public Hearing and Adoption of Resolution Approving Notice of Award and Sale of City-Owned Property Located at 4270 SW 11 Street, Plantation, Florida 33317 to the City of Plantation - (Commission Districts 1, 2, 3 and 4)

City Manager Lagerbloom explained the City of Plantation chose not to move forward with purchasing the property. This item rescinds the previous Resolution.

Vice Mayor Glassman introduced this Resolution which was read by title only.

ADOPTED

Aye: 5 - Commissioner Sorensen, Commissioner Moraitis, Vice Mayor Glassman, Commissioner McKinzie and Mayor Trantalis

PUBLIC HEARINGS

PH-1 [21-0207](#)

Public Hearing and Adoption of Resolution Approving the Parks, Recreation and Beaches Advisory Board's Recommendation for Approval of Land Purchase of Real Property Located at NW 6 Street (Folio:504204120080) as Provided in the Parks and Recreation Bond Resolutions - (Commission District 3)

City Manager Lagerbloom explained the purpose of this item. Comment and discussion ensued on the location of this parcel.

Commissioner McKinzie explained the parcel is located to the east and is contiguous to the District 3 park area known as *Little Lincoln Park*. Mayor Trantalis commented on the possibility of naming the site, Carlton

Moore Park. Commissioner McKinzie recommended discussing this option with Commissioner Moore's son.

Mayor Trantalis opened the public hearing.

There being no one wishing to speak on this item, Vice Mayor Glassman made a motion to close the public hearing, which was seconded by Commissioner Moraitis. Roll call showed: AYES: Commissioner Sorensen, Commissioner Moraitis, Vice Mayor Glassman, Commissioner McKinzie, and Mayor Trantalis.

Commissioner Sorensen introduced this Resolution which was read by title only.

ADOPTED

Aye: 5 - Commissioner Sorensen, Commissioner Moraitis, Vice Mayor Glassman, Commissioner McKinzie and Mayor Trantalis

PH-2 [21-0202](#)

Public Hearing and Resolution Approving Purchase and Sale Agreement for Real Property Located at NW 6 Street (Folio# 504204120080) under the Parks Bond for \$135,000 - (Commission District 3)

Mayor Trantalis opened the public hearing.

There being no one wishing to speak on this item, Commissioner Sorensen made a motion to close the public hearing, which was seconded by Commissioner Vice Mayor Glassman. Roll call showed: AYES: Commissioner Sorensen, Commissioner Moraitis, Vice Mayor Glassman, Commissioner McKinzie, and Mayor Trantalis.

Comment and explanation ensued on the amount of the parcel listed in the Resolution versus the Resolution's title. City Manager Lagerbloom explained costs. The cost of the parcel is \$125,000. The additional \$10,000 is for appraisals, advertising and environmental assessment costs.

City Attorney Boileau confirmed the need for a revised Resolution indicating the amounts associated with the parcel's purchase price and related costs.

Vice Mayor Glassman introduced this Resolution which was read by title only.

ADOPTED

Aye: 5 - Commissioner Sorensen, Commissioner Moraitis, Vice Mayor Glassman, Commissioner McKinzie and Mayor Trantalis

PH-3 [21-0254](#)

Public Hearing to Evaluate All Comments Received and Resolution Approving the Submittal of a Pre-Application to the Florida Department of Economic Opportunity for Grant Funding Through the Florida Community Development Block Grant-Coronavirus (CDBG-CV) Program - (Commission Districts 1, 2, 3 and 4)

Mayor Trantalis opened the public hearing.

There being no one wishing to speak on this item, Vice Mayor Glassman made a motion to close the public hearing, which was seconded by Commissioner Sorensen. Roll call showed: AYES: Commissioner Sorensen, Commissioner Moraitis, Vice Mayor Glassman, Commissioner McKinzie, and Mayor Trantalis.

Vice Mayor Glassman introduced this Resolution which was read by title only.

ADOPTED

Aye: 5 - Commissioner Sorensen, Commissioner Moraitis, Vice Mayor Glassman, Commissioner McKinzie and Mayor Trantalis

PH-4 [21-0173](#)

Public Hearing - Quasi-Judicial Ordinance Approving a Rezoning from Industrial (I) District to Commercial Recreation (CR) District through the Allocation of Commercial Flexibility and Associated Site Plan Approval for Xtreme Action Park - Powerline Industrial Center Commercial Condominium Association, Inc., Dezer Powerline LLC, and Dezer Powerline Outparcel LLC. - Case No. ZR19004 - (Commission District 1)

Anyone wishing to speak must be sworn in. Commission will announce any site visits, communications or expert opinions received and make them part of the record.

Each Commission member disclosed verbal communications, written communications, site visits, and expert opinions received.

Mayor Trantalis opened the public hearing.

There being no one wishing to speak on this item, Commissioner McKinzie made a motion to close the public hearing, which was seconded by Commissioner Sorensen. Roll call showed: AYES: Commissioner Sorensen, Commissioner Moraitis, Vice Mayor Glassman, Commissioner McKinzie, and Mayor Trantalis.

In response to Commissioner Moraitis' questions, Anthony Fajardo, Department of Sustainable Development Director, confirmed discussions with Mr. Berding to address concerns discussed at the January 21, 2021 Commission Regular Meeting. Staff recommends moving forward. *Extreme Action Park* is cooperating with Code Enforcement to address *Florida Building Code* permitting items raised by Mr. Berding. Discussion ensued on the language in the Resolution that should read *Commercial Recreation*, not *Community Recreation*.

Commissioner Moraitis introduced this Ordinance as amended for the First Reading which was read by title only.

PASSED FIRST READING AS AMENDED

Aye: 5 - Commissioner Sorensen, Commissioner Moraitis, Vice Mayor Glassman, Commissioner McKinzie and Mayor Trantalis

ORDINANCE FIRST READING

OFR-1 [21-0081](#)

First Reading - Ordinance Amending City of Fort Lauderdale Unified Land Development Regulations (ULDR) By Creating Article XII., Section 47-36; Establishing a Transfer of Development Rights Program - Planning and Zoning Board Case No. PLN-ULDR-20010001 - (Commission Districts 1, 2, 3 and 4)

Mayor Trantalis thanked Staff for their work on this Ordinance, commenting on his perspective.

Vice Mayor Glassman introduced this Ordinance for the First Reading which was read by title only.

PASSED FIRST READING

Aye: 5 - Commissioner Sorensen, Commissioner Moraitis, Vice Mayor Glassman, Commissioner McKinzie and Mayor Trantalis

ORDINANCE SECOND READING

OSR-1 [21-0272](#)

Second Reading - Ordinance Dissolving the Beach Redevelopment Board and Amending Section 2-219(a) of Code of Ordinances of the City of Fort Lauderdale - (Commission District 2)

Mayor Trantalis thanked members of the community who had served on the Beach Redevelopment Advisory Board over the years.

Vice Mayor Glassman introduced this Ordinance for the Second Reading which was read by title only.

ADOPTED ON SECOND READING

Aye: 5 - Commissioner Sorensen, Commissioner Moraitis, Vice Mayor Glassman, Commissioner McKinzie and Mayor Trantalis

OSR-2 [21-0257](#)

Second Reading - Ordinance Amending the Noise Ordinance Relating to the Construction of Large or Complex Projects (Transportation and Non-Transportation) Exemption for Time to Comply, Establishing an Alternative Approval Process Through the City Commission for the Approval and Revocation of Special Permits - (Commission Districts 1, 2, 3 and 4)

Mayor Trantalis recognized Robert Kain, 819 SE 17th Street. Mr. Kain spoke in opposition to portions of this item. He discussed the negative impact of the *Broward County Convention Center (Convention Center)* construction operations on his residence and suggested limiting related special permits from 7:00 a.m. to 9:00 p.m. and capping the forty-five (45) day special permit extension to one (1) extension for a total of ninety (90) days.

In response to Commissioner Sorensen, City Manager Lagerbloom explained details associated with this item and the Agenda Walk-On item that applies to the *Convention Center*. The Commission will have the discretion to consider special permit requests on a case-by-case basis. Comment and discussion ensued on limiting construction hours from 7:00 a.m. to 10:00 p.m. at the discretion of the Commission.

City Manager Lagerbloom explained Commission latitude to address special circumstances and its ability to condition special permits, which are beyond the authority of the City Manager. Commissioner Moraitis concurred, citing the need for flexibility. City Attorney Boileau explained the related additional language being added to the Ordinance. Further comment and discussion ensued.

In response to Commissioner Sorensen's question, City Manager Lagerbloom explained the process associated with special permit violations. A recommendation to revoke a special permit could come from the City Manager or a Commission Member.

Commissioner Moraitis introduced this Ordinance for the Second Reading which was read by title only.

ADOPTED ON SECOND READING

Aye: 5 - Commissioner Sorensen, Commissioner Moraitis, Vice Mayor Glassman, Commissioner McKinzie and Mayor Trantalis

OSR-3 [21-0258](#)

Second Reading - Ordinance Amending City of Fort Lauderdale

Unified Land Development Regulations (ULDR) Section 47-14, General Aviation Districts to Adopt Airport and Heliport/Helistop Zoning Regulations and Creating Section 47-3.12 to Add Regulations for Nonconforming Obstructions Located Within the Airport Hazard Area, General Aviation Airport District, or Airport Industrial Park District - (Commission Districts 1 and 4)

Commissioner Moraitis thanked Staff for their work on this Ordinance.

Commissioner Moraitis introduced this Ordinance for the Second Reading which was read by title only.

ADOPTED ON SECOND READING

Aye: 5 - Commissioner Sorensen, Commissioner Moraitis, Vice Mayor Glassman, Commissioner McKinzie and Mayor Trantalis

[21-0292](#)

WALK-ON - Resolution Approving a Request for a Special Permit to Extend Construction Hours for the Broward County Convention Center Subject to the Requirements of Section 17-10 - Construction of Large or Complex Projects (Transportation and Non-Transportation) of the City of Fort Lauderdale's Code of Ordinances District - (Commission District 4)

City Manager Lagerbloom explained this Walk-On item relates to the extension of construction hours (special permit) for the *Broward County Convention Center (Convention Center)* project to meet its completion goal of October 2021. Details associated with the special permit request for extended hours of construction operations at the Convention Center were presented. City Manager Lagerbloom explained options available to Commission.

A copy has been made part of the backup to this Agenda item.

Mayor Trantalis recognized Alan Cohen, Broward County Assistant Administrator. Mr. Cohen commented on *Convention Center* construction delays experienced due to rain. He confirmed neighbor outreach to address resident construction concerns. The extended hours requested by Broward County align with the City Manager's authority listed in the Ordinance. Mr. Cohen explained efforts to complete *Convention Center* work impacting neighbors by June 2021 and noted the possible need for an additional special permit extension until September 2021.

In response to Commissioner Sorensen's suggestion, Mr. Cohen said he could return to the Commission in June 2021 to report on progress and request an additional extension.

City Attorney Boileau noted the need to amend language in the Resolution to reflect the June 16, 2021 special permit date.

In response to Mayor Trantalis' question, City Manager Lagerbloom reiterated the extended construction hours of the special permit.

Commissioner Sorensen introduced this Resolution as amended which was read by title only.

ADOPTED AS AMENDED

Aye: 5 - Commissioner Sorensen, Commissioner Moraitis, Vice Mayor Glassman, Commissioner McKinzie and Mayor Trantalis

CITY MANAGER REPORT

City Manager Lagerbloom said the Finance Department and Human Resources Department are available to work with Commission Members for Florida Retirement System (FRS) enrollment, expounding on details.

City Manager Lagerbloom requested Commission direction regarding coordinating a meeting with the Charter Review Board (CRB). Mayor Trantalis explained Vice Mayor Glassman's comments at today's Commission Conference Meeting were to begin the process of gathering topics for future a Commission Joint Workshop with the CRB. City Attorney Boileau said his Staff is reviewing Charter items that require updating.

ADDITIONAL COMMISSION DISCUSSION

In response to Commission Sorensen's request, Interim Police Chief (Police Chief) Patrick Lynn introduced himself and provided an overview of his experience and items he is addressing, including police policies and the budget.

Vice Mayor Glassman discussed concerns regarding the Commission adhering to the correct meeting process. Additional Commission discussions should be part of Commission Conference Meetings.

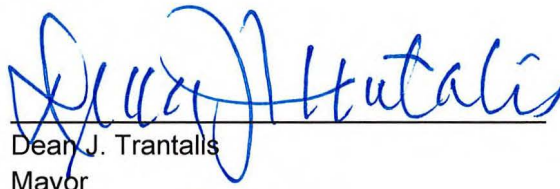
Marc Fein, new Strategic Communication Division Manager introduced himself.

Commissioner Sorensen requested Commission Members receive City-wide, full and holistic infrastructure updates quarterly. Quarterly update information should include projects completed in the past quarter, plans for the next quarter and related expenditures. City Manager

Lagerbloom confirmed.

ADJOURNMENT

Mayor Trantalis adjourned the meeting at 7:39 p.m.



Dean J. Trantalis
Mayor

ATTEST: 

Jeffrey A. Modarelli
City Clerk



**CITY OF FORT LAUDERDALE
City Commission Agenda Memo
REGULAR MEETING**

#21-0292

TO: Honorable Mayor & Members of the
Fort Lauderdale City Commission

FROM: Chris Lagerbloom, ICMA-CM, City Manager

DATE: March 2, 2021

TITLE: **WALK-ON** - Resolution Approving a Request for a Special Permit to Extend Construction Hours for the Broward County Convention Center Subject to the Requirements of Section 17-10 – Construction of Large or Complex Projects (Transportation and Non-Transportation) of the City of Fort Lauderdale’s Code of Ordinances District - **(Commission District 4)**

Recommendation

Staff recommends the City Commission consider adopting a resolution approving a request for a special permit to extend construction hours for the Broward County Convention Center subject to the requirements of Section 17-10 – Construction of Large and Complex Projects (Transportation and Non-Transportation).

Background

The Broward County Convention Center is currently under construction to complete a 177,383 square foot expansion to the site.

The convention center is an important part of the local economy and a critical component of the Fort Lauderdale International Boat Show and is working to complete this expansion prior to the start of the boat show in October of 2021.

Due to unforeseen circumstances related to weather and the pandemic the project is behind schedule and is requesting approval of the special permit to extend the hours of construction so they can continue to move forward and meet their deadlines for the boat show. The applicant has indicated that the building should be dried in no later than June 2021, which would further mitigate construction noise as it would be internal to the structure at that point.

The request includes the following (see Table 1 on page 3 of Exhibit 1):

Table 1: Description of Work Schedule		
Subcontractor Work	Daylight to Dusk (Monday – Saturday, Sunday)	Monday – Saturday: 7am – 10pm (15 hours) Sunday: 10am – 7pm (9 hours)
Steel Erection	Yes	Only during Daylight Hours
Civil Work	Yes	Yes
Steel Detailing	Yes	Yes
Interior Masonry	Yes	Yes
MEPF Systems	Yes	Yes
Concrete Pours	Yes	Yes
Finishes	Yes	Yes

For more information, please see the Noise Mitigation Plan attached as Exhibit 1.

Resource Impact

There is no fiscal impact associated with this action.

Strategic Connections

This item supports the *Press Play Fort Lauderdale 2024 Strategic Plan*, specifically advancing:

- The Business Development Focus Area
- Goal 5: Build an attractive global and local economic community marketplace.
- Objective: Nurture and support existing local businesses

This item advances the *Fast Forward Fort Lauderdale 2035 Vision Plan: We Are Prosperous*.

Attachments

Exhibit 1 – Noise Mitigation Plan

Exhibit 2 – Resolution

Prepared by: Anthony Greg Fajardo, Director of Sustainable Development

Department Director: Anthony Greg Fajardo, Sustainable Development



NOISE MANAGEMENT PLAN

March 2021 – October 2021

BROWARD COUNTY CONVENTION CENTER

1850 - 1950 Eisenhower Boulevard

Fort Lauderdale, FL 33316

Table of Contents

1	Description of Work	3
2	Contractor Contacts	5
3	Equipment	5
4	Noise and Vibration Predictions	6
5	Noise and Vibration Control Measures	7
6	Complaint Response	8
6.1	Procedure and recording of complaints	8
6.2	Community Notification	8
7	COVID 19	8
8	Appendices	9
8.1	Site Plan & Location Map	9
8.2	Community Notification.....	9
8.3	Community Notification Distribution Area	9
8.4	Equipment Predicated Noise Emissions.....	9
8.5	Distance to Condo Map	9
8.6	Noise Monitoring Report	9
8.7	Construction Estimate Schedule	9
8.8	COVID 19 Project Protocols	9
8.9	Rain Fall Information for 2020	9
8.10	NV5 Signed and Sealed Engineered Calculation.....	9

1 Description of Work

- Steel Erection, Steel Detailing, Concrete Pours, Civil work, Interior Masonry, MEPF Systems and Finishes at the Convention Center. The work would commence at 7 AM and be completed by 10 PM (15 hours) Monday through Saturday. On Sunday, the work would commence at 10 AM and be completed by 7 PM. The off hours will commence on March 11th and continue through October of 2021. *No person shall operate or cause to be operated any equipment used in construction, repair, alteration or demolition work on buildings, structures, streets, alleys, or appurtenances thereto with sound-control devices less effective than those provided on the original equipment prior to 7 AM and after 10 PM.*
- The equipment with the most amount of noise will be utilized during daylight hours only (Reference the Noise and Vibration Predictions below and Appendix 8.10 which shows the noise generated from the construction will reduce to below the ambient noise level adjacent to the local residences due to distance from the construction to the residence). The average duration of steel erection will be approximately 10 – 12 hours Monday through Saturday and approximately 9 hours on Sunday. The Steel erection will take place only during daylight hours and welding/detailing will take place on off hours (no sound control equipment will be utilized prior to 7 AM and after 10 PM).
- See attached estimated schedule for the description of work (Reference Appendix 8.7)

Table 1: Description of Work Schedule		
Subcontractor Work	Daylight to Dusk (Monday – Saturday, Sunday)	Monday – Saturday: 7 AM – 10 PM (15 Hours) Sunday: 10 AM – 7 PM (9 Hours)
Steel Erection	Yes	Only during Daylight
Civil Work	Yes	Yes
Steel Detailing	Yes	Yes
Interior Masonry	Yes	Yes
MEPF Systems	Yes	Yes
Concrete Pours	Yes	Yes
Finishes	Yes	Yes

- Site Plan & Location Map (Reference Appendix 8.1)

- Legal Description:
 - 1850 Eisenhower Boulevard:
PORT EVERGLADES PLAT NO 2 108-31 B POR OF PAR A DESC
AS:COMM SW COROF NE1/4 OF SE1/4 OF SEC 14-50 42,NLY 289,ELY
95 TO POB,ELY 220 NLY 792,WLY 220,SLY 411,WLY 15, SLY 110,ELY
15,SLY 271 TO POB

 - 1950 Eisenhower Boulevard:
PORT EVERGLADES PLAT NO 2 108-31 B PARCEL A LESS POR
DESC:COMM SW COR OF NE1/4 OF SE1/4 OF SEC 14-50-42,NLY
289,ELY 95 TO POB, ELY 220,NLY 792,WLY 220,SLY 411, WLY 15,SLY
110,ELY 15,SLY 271 TO POB,& LESS POR PAR A DESC AS COM NW COR
PAR A,E 80 TO POB,CONT E 832,S 288.81,W 114.03,N 88.96,W
475.01,N 29.73,W 235,N 168.61 TO POB

- Justification for Work:
 - Safely putting more people to work during COVID-19

 - There has been a significant increase in rainfall during 2020 which has impacted the construction schedule by 30+ workdays. The project is estimating that in order to make up the 30+ days, the project will have to work two (2) shifts through the completion of the project. The project completion date is October 15th, 2021 and it is estimated that the 2021 Boat Show will start loading around the 10th of October.

 - The project estimates that the building will be dried in (Building envelope will be completed) no later than June of 2021. This will significantly reduce any noise outside of the project as the majority of the work will be inside the building. The Dry in will start as early as April of 2021 with an anticipated dry in date of June of 2021. The noise level will continue at the same level through the beginning of March and slowly start to decrease through the completion of the dry in of the building. The shortest distance from the work to the nearest residential condo is 580 feet (Reference Appendix 8.5). The distance from the work to the nearest residence should not be any more significant than 17th street itself (reference Noise Monitoring Report appendix 8.6).

- o The second shift will help accelerate the project.
 - o Early morning concrete pours will help alleviate the amount of Construction traffic on SE 17th Street during peak traffic hours.
 - o The above will reduce the impact of construction on the surrounding residential neighborhoods and businesses by keeping the project within the original completion date.
- Commencement Date and Duration of Work:
- o The second shift will commence on March 11th, 2021 and continue through October of 2021.
 - o Steel Erection, Concrete Pours, Interior Masonry, Civil, MEPF, and Finishes activities will be in accordance with the attached estimated schedule.

2 Contractor Contacts

Balfour Beatty Construction – Broward County Convention Center Project Team – Table 2

Table 2: BBC Contact List		
Name	Position	Contact Number
Ron Ferguson	General Superintendent	(407) 713-1877
Chris Baran	Senior Project Manager	(407) 461-4107
Tom Stedem	Senior Project Manager	(863) 640-0298
Jose Rodriguez	Superintendent	(407) 304-9401
Justin Valdes	Assistant Superintendent	(407) 572-5654

3 Equipment

- The equipment used for construction work is the quietest reasonably available.
- Equipment that may generate noise during the second shift are as follows:
 - o Cranes
 - o Concrete Trucks
 - o Concrete Pumps
 - o Concrete Vibrators
 - o Back-up Alarm on Construction Equipment
 - o Material Delivery Trucks
- The duration of use of equipment and/or period of work will vary depending on each activity. Noise generated will be intermittent based on specific activity taking place (i.e. – back-up warning alarm from trucks, concrete vibrators, pump trucks, etc...)

4 Noise and Vibration Predictions

- Reference Appendix 8.10 NV5 Signed and Sealed Engineered Calculation showing that the noise generated from the construction project is equal to or less than the surrounding ambient noise. Reference the last paragraph of page 3 and all of the information on page 4 for specifics. The following is the information from the bottom of page 3 and 4:

In order to determine compliance with the City regulations a calculation of noise at the adjacent properties is necessary. Noise reduces with distance and using a standard calculation noise may be predicted based upon an initial level and distance. The use of the inverse square law allows predication in that a sound level (intensity) will drop off as distance increases. This law which has been demonstrated by evidence and actual measurement calculates a six (6) decibel drop with a doubling of the distance in feet. Considering the 85-decibel level for the forklift at 570 feet noise would reduce to 64 dBA.

The predicted level is presuming no uninterrupted path for the sound and that no existing levels are considered. However, the largest reduction of noise would be the shadowing of any noise at the Convention Center by existing noise from the community and traffic on SE 17th Street.

Measured levels from October 31, 2020 through December 16, 2020 show that noise from the adjacent street area and associated community produce levels that do not regularly go below 60-65 decibels up to 70 decibels. This data shows a solid noise level that exists over this period consistently. This may be considered as the “ambient” level of noise. Graphs are attached following the conclusion of this letter that show data from the noise meter for a series of dates which also identify City time frames and working shifts. Also shown are two graphs showing overall noise levels as the one minute maximum levels from October 28 through December 16, 2020. As the noise levels are 60 – 65 decibels at the minimum the 64 dBA generated by the forklift would be obscured by community ambient levels. Also, considering the noise levels occur 24-hours over this range of noise, the 60 dBA daytime and 50 dBA nighttime noise limits of the City cannot be met due to ambient conditions. In our opinion the noise levels projected to the north properties would not be in excess of the noise regulations of the City.

- Equipment Noise Emission Levels (Lmax Noise (dba) 50 ft):
 - o Concrete Trucks – 85
 - o Concrete Pumps – 82
 - o Concrete Vibrators – 80
 - o Back-up Alarm – 97 – 112
 - o Crane – 85

- The aforementioned equipment predicated noise emissions can be reviewed in the Appendices below or on the U.S. Department of Transportation Highway Administration website (Link [HERE](#)).

5 Noise and Vibration Control Measures

- We have installed a noise monitoring device located adjacent to the nearest residential condo to demonstrate that the noise generated during the off hours outside of 8 AM to 7 PM are equivalent to the noise generated from 17th Street and the surrounding areas. Reference attached GeoSonics report for noise monitoring (Appendix 8.6).

- Only the equipment necessary for Concrete pours, Interior Masonry, MEPF Systems, and Finishes will be utilized prior to and after the normal Construction operation hours of 8 AM to 7 PM.
 - o Concrete Truck back-up alarms will be switched to ambient white noise to lessen noise emissions by 18 dBA when safety protocols allow.
 - o On-site traffic patterns will be coordinated to minimize backing up movement.
 - o Deliveries will be sequenced appropriately to reduce the amount of idling Trucks.

- We do not anticipate any heavy vibration during the concrete pours and no pile work will be conducted during this time frame.

6 Complaint Response

6.1 Procedure and recording of complaints

- The Balfour Beatty Construction – Broward County Convention Center Team will be responsible for logging and responding to all complaints

- Any complaints can be made via phone or in writing to:

Balfour Beatty Construction
ATTN: Ron Ferguson
7901 S.W. 6th Court, Ste. 200
Plantation, FL 33324
(407) 713-1877

Balfour Beatty Construction
ATTN: Chris Baran
7901 S.W. 6th Court, Ste. 200
Plantation, FL 33324
(407) 461-4107

6.2 Community Notification

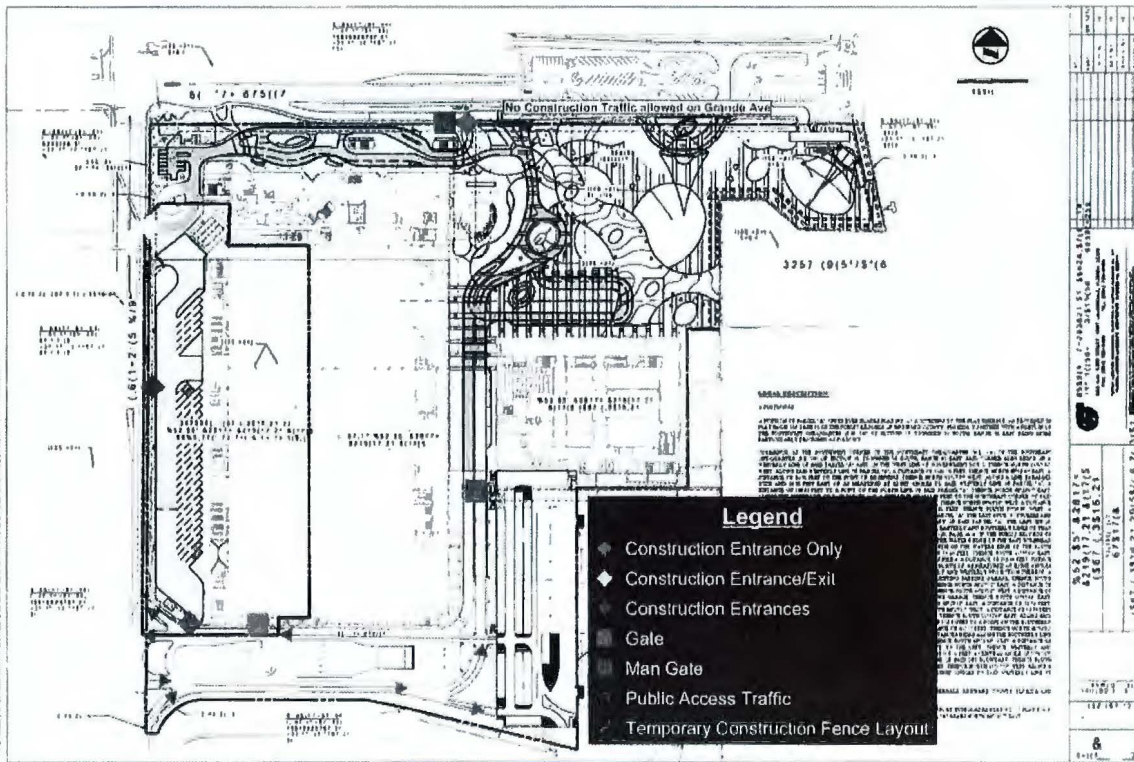
- Balfour Beatty Construction will post a Community Notification around the project site on the perimeter fence and with the Condo Association announcement boards in the adjacent condo building. In addition, notifications will be left in mailboxes of adjacent businesses. (Reference Appendix 8.3).
- The project will also utilize the Fort Lauderdale Office of Neighbor Support to ensure maximum outreach.
- Notifications will identify all second shift work and will be posted prior to the commencement of work.
- Reference Appendices for Community Notification Letter and Distribution Area.

7 COVID 19

Balfour Beatty Construction is closely monitoring the COVID 19 pandemic and ensuring every measure is being followed in the office and the field to the safety of the workers and the surrounding community. (Reference our COVID 19 Project Protocols in Appendix 8.8).

8 Appendices**8.1 Site Plan & Location Map****8.2 Community Notification****8.3 Community Notification Distribution Area****8.4 Equipment Predicated Noise Emissions****8.5 Distance to Condo Map****8.6 Noise Monitoring Report****8.7 Construction Estimate Schedule****8.8 COVID 19 Project Protocols****8.9 Rain Fall Information for 2020****8.10 NV5 Signed and Sealed Engineered Calculation**

BCCCH - Site Logistics Plan



Stantec
 10000 144th Avenue, Suite 100
 Richmond, BC V6V 1K2
 Tel: 604.273.4444
 Fax: 604.273.4445
 Email: info@stantec.com

PRELIMINARY NOT FOR CONSTRUCTION
 THIS PLAN IS FOR INFORMATION ONLY AND IS NOT TO BE USED FOR CONSTRUCTION. ANY CHANGES TO THIS PLAN MUST BE APPROVED BY STANTEC.



Scale
 1" = 100'

NO.	DESCRIPTION	AREA (SQ. FT.)	PERCENTAGE OF TOTAL AREA
1	Construction Entrance Only	150	0.15
2	Construction Entrance/Exit	200	0.20
3	Construction Entrances	300	0.30
4	Gate	400	0.40
5	Man Gate	500	0.50
6	Public Access Traffic	600	0.60
7	Temporary Construction Fence Layout	700	0.70
8	Other	800	0.80
9	Total	1000	1.00

PRELIMINARY NOT FOR CONSTRUCTION
 THIS PLAN IS FOR INFORMATION ONLY AND IS NOT TO BE USED FOR CONSTRUCTION. ANY CHANGES TO THIS PLAN MUST BE APPROVED BY STANTEC.

PRELIMINARY NOT FOR CONSTRUCTION
 THIS PLAN IS FOR INFORMATION ONLY AND IS NOT TO BE USED FOR CONSTRUCTION. ANY CHANGES TO THIS PLAN MUST BE APPROVED BY STANTEC.

81 Site Plan & Location Map

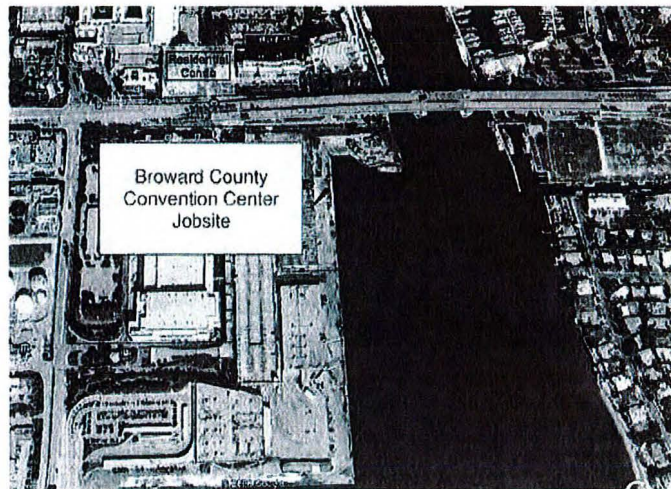
PUBLIC NOTICE

***EARLY MORNING CONCRETE POUR, STEEL
DETAILING, STEEL ERECTION INTERIOR MASONRY,
MEPF SYSTEMS, AND FINISHES ADVISORY***

BROWARD COUNTY CONVENTION CENTER

1850 - 1950 Eisenhower Boulevard Fort Lauderdale, FL 33316

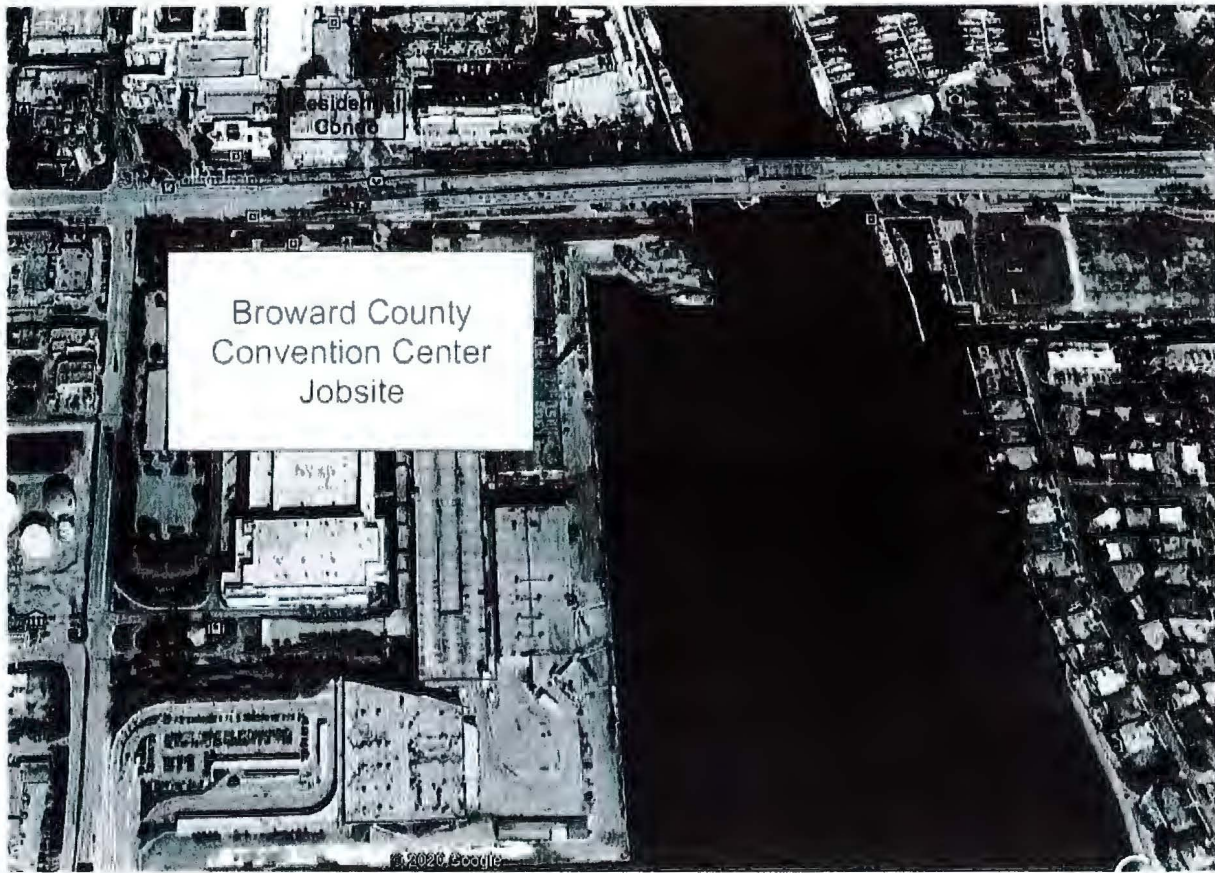
Please be advised that the Broward County Convention Center at 1850-1950 Eisenhower Boulevard, Fort Lauderdale, FL 33316 will be conducting second shift work Monday – Saturday 7 AM to 10 PM and Sunday 10 AM to 7 PM beginning March 11th, 2021 and will continue through October of 2021.



Balfour Beatty Construction

ATTN: Ron Ferguson
7901 S.W. 6th Court, Ste. 200
Plantation, FL 33324
(407) 713-1877

ATTN: Chris Baran
7901 S.W. 6th Court, Ste. 200
Plantation, FL 33324
(407) 461-4107



Community Notification Distribution Area

8.3 Community Notification Distribution Area

Effective Noise Control During Nighttime Construction

[Workshops](#) > [Reduced Demand](#)

Introduction

In recent years there have been fundamental changes in the types of projects that Departments of Transportation (DOT) are constructing. Today a significant number of projects are urban widening/rehabilitation work where daylight construction closures of the routes cause unacceptable congestion problems. Therefore, because of the high traffic volumes during the normal workday on these major urban transportation corridors, it is usually only possible to perform construction operations during the nighttime.

Departments of Transportation are writing into the specifications for these projects severe restrictions on when a contractor can execute the work. Typically the work must be performed at night. In turn, these nighttime work requirements precipitated disturbances to adjacent property owners'. When residents complain the path of their complaints is often through their local government. Additionally, the resulting complaints are coming during a climate of national concern about the adverse effects of environmental noise.

In the conduct of their construction and rehabilitation programs agencies struggle with three interested and impacted parties that must be satisfied.

- The driving public both commercial and private
- The community through which the transportation corridor traverses
- The construction contractors

This is a compilation of methods and techniques for mitigating nighttime construction nuisances. Mitigation is a critical requirement for serving the traveling public, for conducting DOT business in a responsible manner, and for preparing valid contract documents.

Problems

The major nuisances associated with the nighttime construction are noise, vibration, and illumination. Noise problems are normally caused by the operation of heavy equipment and specifically by vehicle and machine backup-alarms, Table 1. Vibration problems are primarily a result of pile driving, blasting operations, or the use of vibratory rollers. While good illumination is necessary for the work to proceed at night and for the safety of the traveling public, proper work zone illumination can be very intrusive to project neighbors. There is also concern by Departments about exposure to possible contractor claims if noise objectives are not properly presented in the contract documents.

A telephone survey of state DOTs found that many require adherence to certain noise (decibel) limits during nighttime construction. In many cases these limits are the consequence of specific local ordinances. Some Departments indicated that they could receive local ordinance waivers rather easily. Other Departments stated that they had jurisdiction over the local municipalities in these matters, but they tried to abide by the local ordinances.

TABLE 1. Critical Nighttime Construction Noise Generators

Noise Generator	Percent of DOTs identifying as Cause of Problems*
Back-up Alarms	41%
Slamming Tailgates	27%
Hoe Rams	24%

Milling/Grinding Machines	16%
Earthmoving Equipment	14%
Crushers	6%

*As rated by the 50 State DOTs

Sound

The human ear does not judge sound in absolute terms, but instead senses the intensity of how many times greater one sound is to another. A decibel is the basic unit of sound level; it denotes a ratio of intensity to a reference sound. Most sounds that humans are capable of hearing have a decibel (dB) range of 0 to 140. A whisper is about 30 dB, conversational speech 60 dB, and 130 dB is the threshold of physical pain, Fig. 1.

Figure 1. Representative Noise Levels

Noise levels tested (in increasing decibel level) include: sound studio (20 dB), quiet office (40 dB), conversation (60 dB), noisy restaurant (75 dB), chain saw (120 dB), jet plane (148 dB), and saturn rocket (200 dB).

Sound and noise are not the same thing, but sound becomes noise when:

- It is too loud
- It is unexpected
- It is uncontrollable
- It occurs unexpectedly
- It has *pure tone components*

Noise is any sound that has the potential to annoy or disturb humans, or cause an adverse psychological or physiological effect on humans. In the case of the general population a 5 dBA change is required before most people realize there is a perceptible sound difference.

The noise levels generated during the construction process vary depending on the type of equipment and the nature of the work being performed. It should be recognized that noise impacts can be severe, especially during nighttime activities, and that in many cases simple noise mitigation strategies will not suffice.

Noise generation on most construction projects is the result of equipment operation with diesel engines being the primary generators. Equipment components that generate noise include: the engine, cooling fan, air intake, exhaust, transmission, and tires. In assessing noise generation, construction equipment can be grouped into two categories, stationary and mobile. Equipment noise can also be categorized as being either continuous or impulse in nature. Stationary equipment is considered to operate in one location for one or more days at a time; pumps, generators, compressors, screens, are typical examples of stationary equipment. In addition, pile drivers and pavement breakers are sometimes categorized as stationary equipment. Mobile equipment includes machinery that performs cyclic processes such as: bulldozers, scrapers, loaders, and haul trucks.

Equipment Noise

Construction equipment is a major noise generator on nearly all nighttime construction projects. The equipment type, specific model, equipment condition and the operation performed influence equipment noise. Equipment manufacturers began attacking machine noise problems in the late '60s and today because of design improvements and technological advances new machines have been quieted to an acceptable level for almost every situation. *Newer equipment is noticeably quieter than older models* due primarily to better engine mufflers, refinements in fan design and improved hydraulic systems. Noise levels as generated by typical equipment are shown in Table 2.

How equipment noise will be perceived is also a function of use duration. On a monitored project in New Jersey the highest noise levels resulted from pile driving; but, because the driving was completed in a short period of time, the activity did not draw any complaints.

One of the conclusions from the U.S. Department of Transportation's 1979 construction equipment noise study was that 88 dBA is a reasonable noise level to expect for *used* equipment with an engine horsepower of 400 or less. It should be noted that the USDOT tests were made in the field under actual operating conditions at road construction sites, mines and quarries.

In 1994 and 1995 Harris Miller Miller & Hanson Inc. performed noise studies for the Central Artery/Tunnel project in Boston. The first study sought to quantify an *average* noise level while the second defined a *typical* noise level. It would seem that a typical value is better to use in developing specifications or project restrictions. That data delineates the most commonly occurring level.

Table 2. Construction Equipment Noise Emission Levels

Equipment	Typical Noise Level (dBA) 50 ft., U. S. Dept. of Trans. study 1979	Average Noise Level (dBA) 50 ft., CA/T Project study 1994	Typical Noise Level (dBA) 50 ft., U. S. Dept. of Trans. study 1995	Lmax Noise (dBA) 50 ft., CA/T Project Spec. 721.560
Air Compressor		85	81	80
Backhoe	84	83	80	80
Chain Saw				85
Compactor	82		82	80
Compressor	90	85		80
Concrete Truck		81		85
Concrete Mixer			85	85
Concrete Pump			82	82
Concrete Vibrator			76	80
Crane, Derrick	86	87	88	85
Crane, Mobile		87	83	85
Dozer	88	84	85	85
Drill Rig		88		85
Dump Truck		84		84
Excavator				85
Generator	84	78	81	82
Gradall		86		85
Grader	83		85	85
Hoe Ram		85		90
Impact Wrench			85	85
Jackhammer*		89	88	85
Loader	87	86	85	80
Paver	80		89	85
Pile Driver, Impact		101	101	95
Pile Driver, Sonic			96	95
Pump	80		85	77

Rock Drill			98	85
Roller			74	80
Scraper	89		89	85
Slurry Machine		91		82
Slurry Plant				78
Truck	89	85	88	84
Vacuum Excavator				85

* There are 82 dBA @ 7 meter rated jackhammers (90 lb. class) available. This would be equivalent to 74 dBA @ 50 ft. These are silenced with molded intricate muffler tools.

Equipment Noise Control Options

Listed in Table 3 are the major sources of equipment noise that cause complaints. The Table also lists specific methods for controlling the identified noise problem.

Table 3. Construction Equipment Noise Control Options

Noise Source	Control
Backup alarms	Use manually-adjustable alarms
	Use self adjusting alarms
	Use an observer
	Configure traffic pattern to minimize backing movement
Slamming tailgates	Establish truck cleanout staging areas
	Use rubber gaskets
	Decrease speed of closure
	Use bottom dump trucks
Pavement breakers (jackhammers)	Fit with manufacturer approved exhaust muffler
	Prohibit within 200 ft. of a noise sensitive location during nighttime hours
	Enclose with a noise tent
Prolonged idling of equipment	Reduce idling
	Locate equipment away from noise sensitive areas

Ambient-sensitive self-adjusting backup alarms increase or decrease their volume based on background noise levels. These alarms work best on smaller equipment such as backhoes and trucks. The alarm self-adjusts to produce a tone that is readily noticeable over ambient noise levels (a minimum increment of 5 decibels is typically considered readily noticeable), but not so loud as to be a constant annoyance to neighbors. The typical alarm adjustment is 82 or 107 dBA. Close attention must be given to the alarm's mounting location on the machine in order to minimize engine noise interference, which can be sensed by the alarm as the ambient noise level. These alarms should be mounted as far to the rear of the machine as possible. An alarm mounted directly behind a machine's radiator will sense the cooling fan's noise and adjust accordingly, Figure 2. Such a mounting will **negate the purpose of the device.**

Manually-adjustable alarms are effective in reducing backup alarm noise nuisance but their use requires that each alarm be set at the beginning of each day and night shift. The manual setting feature eliminates the machine mounting location problem of the ambient-sensitive self-adjusting backup alarms. The manually adjustable alarms typically have an 87 and 107 dBA setting range, with the 87 dBA setting used for nighttime operations.

Noise Mitigation

Of interest in terms of community noise impact is the overall noise resulting from a construction site. The noise of each individual piece of equipment and sometimes the highest noise source is not always the number one priority. Noise control is directed toward modification of a perceived sound field. It strives to change the impact at the receiver so that the sounds conform to a desired level. Mitigation of undesired sounds should consider source control, path control, and receptor control Figure 3.

Figure 2. A Self-Adjusting Backup Alarm Mounted in the Wrong Position

Figure 3. Noise Transfer Situation

The Noise Transfer Situation shows the relation between sources, such as a pile driver, loader and truck, and their paths, groundborne vibration and direct sound (which includes a reverberant field) to the receiver. The relation is detailed below.

The Pile Driver creates a groundborne vibration path to the receiver. The loader and truck create a direct sound (reverberant field) path to the receiver.

Source Controls

Source control is the most effective method of eliminating noise problems. It is a cardinal rule that, where possible, noises control should occur at the source. Source controls, which limit noise emissions, are the easiest to oversee on a construction project. Source mitigation reduces the noise problem everywhere not just along a single path or for one receiver. Consequently, a project's noise mitigation strategy should emphasize noise control at the source.

Require Construction Operations Planning

Restrict the movement of equipment into and through the construction site. Long-term impacts are generated along haul routes when there are large quantities of materials to be moved. Reroute truck traffic away from residential streets. Impose seasonal limitations on construction noise, the spring or fall are critical times in residential areas because windows are usually open at night.

Example Specifications

Where practical and feasible, construction sites shall be configured to minimize back-up alarm noise. For example, construction site access should be designed such that delivery trucks move through the site in a circular manner without the need to back up.

Require Modern Equipment

Unions recognize construction noise as a hazard to workers and the first of five things suggested to workers to address the problem is that they "Ask contractors to buy quieter equipment when they buy new equipment." DOT specification of equipment noise emission limits forces the use of modern equipment having better engine insulation and mufflers. The emission levels specified should reflect levels that can reasonably be achieved with well-maintained equipment, see Table 3.

Equipment Restrictions

Restrict the type of equipment used.

Example Specifications

The use of impact pile drivers shall be prohibited during evening and nighttime hours.

All jackhammers and pavement breakers used on the construction site shall be fitted with manufacturer's approved exhaust mufflers.

The use of pneumatic impact equipment (i.e. pavement breakers, jackhammers) shall be prohibited within 200 feet of a noise-sensitive location during nighttime hours.

The local power grid shall be used wherever feasible to limit generator noise. No generators larger than 25 KVA shall be used and, where a generator is necessary, it shall have a maximum noise muffling capacity.

Call the contractor's attention to the back-up alarm noise problem and require measures to address the issue.

By specification direct the use of only power grid connected or solar powered traffic control devices, Figure 4.

Example Specifications

All variable message/sign boards shall be solar powered or connected to the local power grid.

Figure 4. Solar Powered Traffic Control Devices

Operate at Minimum Power

Noise emission levels tend to increase with equipment operating power. This is a critical issue with older street sweepers, demolition work using a hoe-ram, and equipment such as vac-trucks, Figure 5. Require that such equipment operate at the lowest possible power levels.

Figure 5. vac-truck working at night

Use Quieter Alternate Equipment

Electric or hydraulic powered equipment is usually quieter than a diesel-powered machine. Encourage contractors to use alternate equipment. Use electric tower cranes, Fig. 6, instead of diesel power mobile cranes

Figure 6. Electric Tower Cranes for Bridge Construction

Path Controls

Alone, source noise controls are frequently inadequate at adequately minimizing noise impacts on abutting sensitive receptors because of the close proximity to residences and businesses in urban areas and because of the very nature of the construction work. Thus, having exhausted all possible mitigation methods of controlling noise at the source, the second line of attack is controlling noise radiation along its transmission path. Noise path barriers should provide a substantial reduction in noise levels, should be cost effective, and should be implementable in a practical manner without limiting accessibility. Barriers can increase a project's visual impact. This visual change can have either a positive or negative impact. Therefore, aesthetic effects must be considered when designing barrier systems.

Path Mitigation Techniques

Once established, only reflection, diffraction insulation or dissipation can modify an airborne sound field. In other words, it is necessary to increase the distance from the source or to use some form of solid object to either destroy part of the sound energy by absorption, or to redirect part of the energy by wave deflection. The three techniques for path mitigation are therefore:

Distance

Reflection

Absorption

Enclose especially Noisy Activities or Stationary Equipment

Enclosures can provide a 10 to 20 dBA sound reduction. Additionally the visual impact of roadwork activities has an affect on how construction sounds are perceived. An important noise mitigation issue, therefore, is the audio-visual sensing factor. Enclosures address both the absolute audio and the visual perception issue, Figure 7.

Example Specifications

All jackhammers and pavement breakers used at the construction site shall be enclosed with shields, acoustical barrier enclosures, or noise barriers.

Figure 7. Slurry Plant Enclosure for Audio-Visual and Dust Control

Conclusions

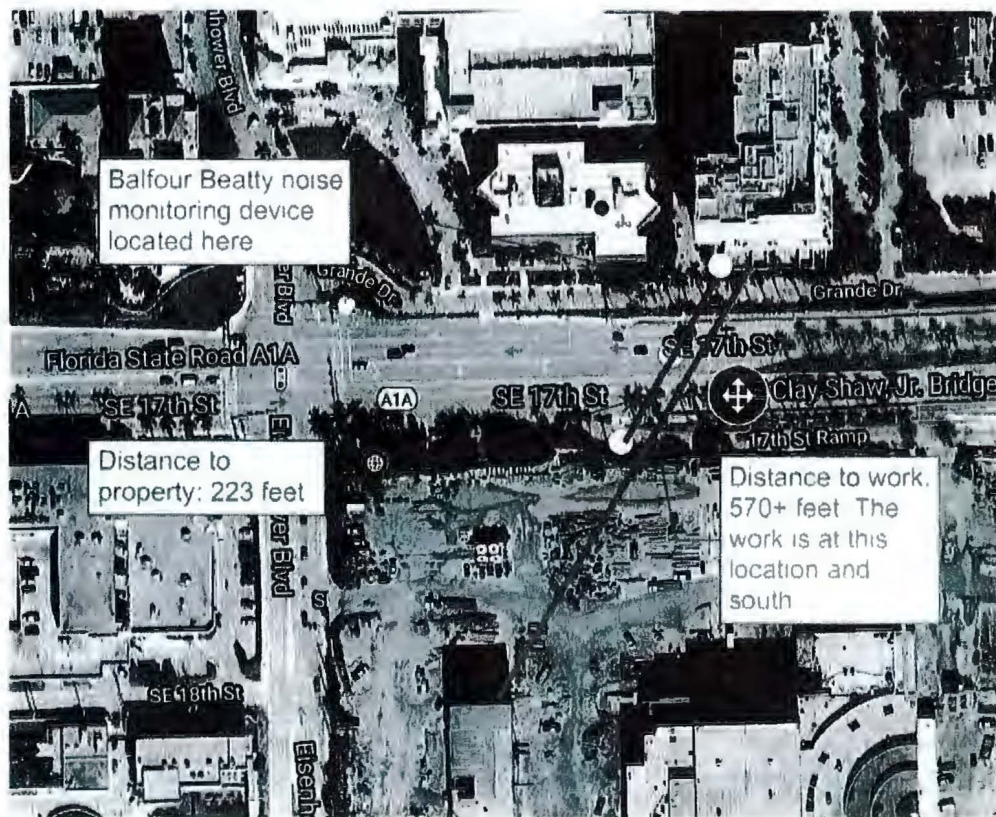
A significant number of future construction projects will involve urban work. Therefore, it is important that before contracts are advertised and bid that there be an objective assessment as to the magnitude of noise nuisances. Noise problems are normally caused by the operation of heavy equipment. The identification of methods and techniques for mitigating such nuisances is a critical planning requirement for both owners and contractors.

Source control is the most effective method of controlling construction noise. Source controls, which limit noise, are the easiest to oversee on a construction project. Mitigation at the source reduces the problem everywhere not just along one single path or for one receiver. The specification of equipment *noise emission limits* forces the use of modern equipment having better engine insulation and mufflers.

Path Controls are the second line of attack in controlling noise. Barriers can provide a substantial reduction in the nuisance effect in some cases. The use of barriers should be examined against other possible measures to prove that they are cost effective. Further, aesthetic effects must be considered when designing barrier systems. Path control measures include:

- Move equipment farther away from the receiver
- Enclose especially noisy activities or stationary equipment
- Erect noise barriers or curtains
- Use landscaping as a shield and dissipater

BCCCH - Distance to Condo



8.5 Distance to Condo Map

Balfour Beatty

Start 12/05/2020 12:00 AM End 12/09/2020 11:59 PM SEARCH EXPORT

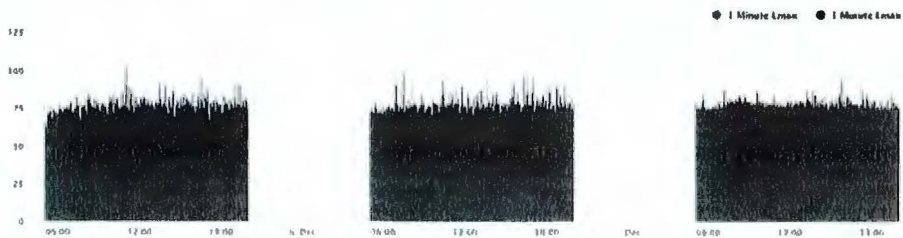
SHOW DATA

Noise Meter - 1 Minute Leq



SHOW DATA

Noise Meter - 1 Minute Lmax



Noise Meter - 1 Hour Leq

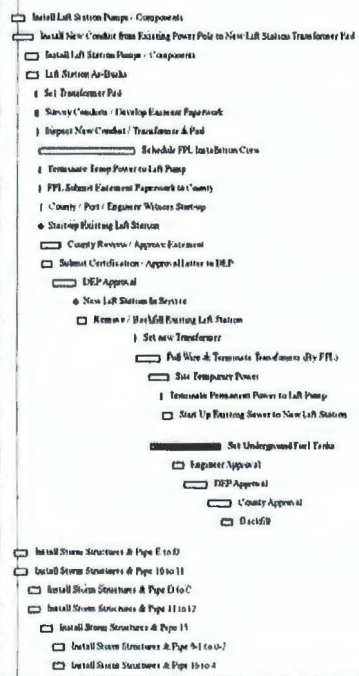


8.5 Noise Monitoring Report

BCCCH - Civil Remaining Work in 2021

Date Date 20-Dec-20
Print Date 09-Dec-20 14:28

Activity ID	Activity Name	Start	Finish	Org. Dur.	Plan. Dur.	2021											
						Jan	Feb	Mar	Apr	May	Jun	Jul	Aug	Sep	Oct	Nov	Dec
Broward County Convention Center - West Expansion																	
West Expansion																	
Client: Fla. 1 - Warehouse Demo & Utility Re-alignment																	
Lift Station																	
WE1-491	Install Lift Station Pumps - Components	28-Dec-20	09-Jan-21	5	7												
WE1-785	Install New Conduit from Existing Power Pole to New Lift Station Transformer Pad	28-Dec-20	09-Jan-21	10	10												
WE1-1085	Install Lift Station Pumps / Components	09-Jan-21	12-Jan-21	7	7												
WE1-1340	Lift Station Air-Brake	06-Jan-21	12-Jan-21	5	5												
WE1-975	Set Transformer Pad	11-Jan-21	18-Jan-21	1	1												
WE1-1280	Survey Conduits / Develop Easement Paperwork	11-Jan-21	12-Jan-21	2	2												
WE1-885	Inspect New Conduit / Transformer Pad	12-Jan-21	12-Jan-21	1	1												
WE1-905	Schedule FPL Installation Crew	15-Jan-21	05-Feb-21	40	40												
WE1-1350	Terminate Temp Power to Lift Pump	13-Jan-21	13-Jan-21	1	1												
WE1-1390	FPL Submittal Assessment Paperwork to County	13-Jan-21	13-Jan-21	1	1												
WE1-1110	County / Post / Engineer Witness Start-up	14-Jan-21	14-Jan-21	1	1												
WE1-1120	Start-up Existing Lift Station	14-Jan-21		0	0												
WE1-1000	County Review / Approve Easement	14-Jan-21	25-Jan-21	10	10												
WE1-1050	Select Certification / Approval Letter to DEP	15-Jan-21	20-Jan-21	4	4												
WE1-1100	DEP Approval	21-Jan-21	05-Feb-21	10	10												
WE1-933	New Lift Station In Service		03-Feb-21	0	0												
WE1-640	Remove / Backfill Existing Lift Station	06-Feb-21	09-Feb-21	5	5												
WE1-730	Set new Transformer	10-Mar-21	10-Mar-21	1	1												
WE1-915	Pad Wire & Terminate Transformer (By FPL)	11-Mar-21	20-Mar-21	10	10												
WE1-955	Site Temporary Power	10-Mar-21	20-Mar-21	10	10												
WE1-945	Terminate Permanent Power to Lift Pump	25-Mar-21	25-Mar-21	1	1												
WE1-705	Start Up Existing Sewer to New Lift Station	26-Mar-21	31-Mar-21	5	5												
Cover																	
WE1-870	Set Underground Fuel Tanks	16-Mar-21	20-Apr-21	10	10												
WE1-1130	Engineer Approval	01-Apr-21	07-Apr-21	3	3												
WE1-1140	DEP Approval	09-Apr-21	21-Apr-21	10	10												
WE1-1150	County Approval	23-Apr-21	05-May-21	10	10												
WE1-840	Backfill	06-Apr-21	06-May-21	5	5												
Storm																	
WE1-935	Install Storm Structures & Pipe E to D	30-Dec-20	06-Jan-21	5	5												
WE1-1430	Install Storm Structures & Pipe 10 to 11	10-Dec-20	06-Jan-21	5	5												
WE1-145	Install Storm Structures & Pipe D to C	07-Jan-21	13-Jan-21	5	5												
WE1-970	Install Storm Structures & Pipe 11 to 12	07-Jan-21	13-Jan-21	5	5												
WE1-980	Install Storm Structures & Pipe 15	14-Jan-21	20-Jan-21	5	5												
WE1-920	Install Storm Structures & Pipe 8-1 to 9-2	21-Jan-21	27-Jan-21	5	5												
WE1-950	Install Storm Structures & Pipe 16 to 4	21-Jan-21	27-Jan-21	5	5												



Balfour Beatty

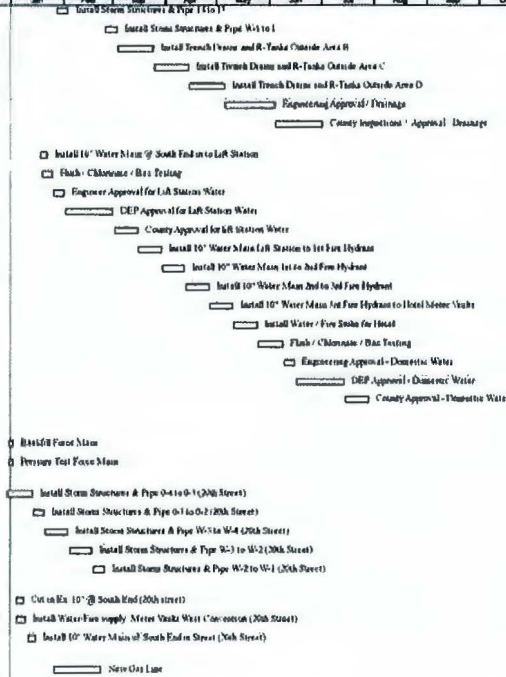


Remaining Level of Effort
 Remaining Work
 Actual Level of Effort
 Critical Remaining Work
 Actual Work
 Milestone

BCCCH - Civil Remaining Work in 2021

Date Date 20-Dec-20
Print Date 09-Dec-20 14:28

Activity ID	Activity Name	Start	Finish	Orig. Dur.	Plan Dur.	2021											
						Jan	Feb	Mar	Apr	May	Jun	Jul	Aug	Sep	Oct	Nov	Dec
WEI-900	Install Storm Structures & Pipe 14 to 11	18-Jan-21	05-Feb-21	5	5												
WEI-905	Install Storm Structures & Pipe W-1 to 1	25-Feb-21	05-May-21	5	5												
WEI-1090	Install Trench Drains and R-Tanks Outside Area B	04-Mar-21	24-Mar-21	11	11												
WEI-1070	Install Trench Drains and R-Tanks Outside Area C	25-Mar-21	14-Apr-21	15	15												
WEI-1080	Install Trench Drains and R-Tanks Outside Area D	15-Apr-21	05-May-21	15	15												
WEI-1160	Engineering Approval / Drainage	05-May-21	01-Jun-21	20	20												
WEI-1170	County Inspections / Approval / Drainage	08-Jun-21	01-Jul-21	20	20												
Storm Water																	
WEI-870	Install 10" Water Main @ South End to Lift Station	18-Jan-21	25-Jan-21	5	5												
WEI-760	Flush / Chlorinate / Bore Testing	19-Feb-21	20-Feb-21	5	5												
WEI-840	Engineer Approval for Lift Station Water	26-Feb-21	01-Feb-21	5	5												
WEI-850	DEP Approval for Lift Station Water	03-Feb-21	01-Mar-21	20	20												
WEI-860	County Approval for Lift Station Water	02-Mar-21	15-Mar-21	10	10												
WEI-1190	Install 10" Water Main Lift Station to 1st Fire Hydrant	16-Mar-21	29-Mar-21	10	10												
WEI-1200	Install 10" Water Main 1st to 2nd Fire Hydrant	30-Mar-21	15-Apr-21	10	10												
WEI-1210	Install 10" Water Main 2nd to 3rd Fire Hydrant	15-Apr-21	26-Apr-21	10	10												
WEI-1220	Install 10" Water Main 3rd Fire Hydrant to Hotel Meter Vault	27-Apr-21	10-May-21	10	10												
WEI-1230	Install Water / Fire Sheds for Hotel	11-May-21	20-May-21	10	10												
WEI-1240	Flush / Chlorinate / Bore Testing	25-May-21	08-Jun-21	10	10												
WEI-1250	Engineering Approval - Domestic Water	09-Jun-21	15-Jun-21	5	5												
WEI-1260	DEP Approval - Domestic Water	16-Jun-21	16-Jul-21	30	30												
WEI-1270	County Approval - Domestic Water	15-Jul-21	20-Jul-21	10	10												
Storm																	
WEI-1095	Backfill Force Main	11-Dec-20	02-Jan-21	2	2												
WEI-1105	Pressure Test Force Main	31-Dec-20	02-Jan-21	2	2												
Storm																	
WEI-900	Install Storm Structures & Pipe 0-4 to 0-3 (20th Street)	30-Dec-20	15-Jan-21	10	10												
WEI-910	Install Storm Structures & Pipe 0-3 to 0-2 (20th Street)	16-Jan-21	26-Jan-21	5	5												
WEI-445	Install Storm Structures & Pipe W-1 to W-4 (20th Street)	21-Jan-21	01-Feb-21	10	10												
WEI-450	Install Storm Structures & Pipe W-1 to W-2 (20th Street)	04-Feb-21	17-Feb-21	10	10												
WEI-460	Install Storm Structures & Pipe W-2 to W-1 (20th Street)	18-Feb-21	24-Feb-21	5	5												
Domestic Water																	
WEI-480	Cut on Ex 10" @ South End (20th Street)	04-Jan-21	08-Jan-21	5	5												
WEI-470	Install Water-Fire Supply Meter Vault West Convention (20th Street)	04-Jan-21	08-Jan-21	4	4												
WEI-490	Install 10" Water Main @ South End on Street (20th Street)	11-Jan-21	15-Jan-21	5	5												
Gas																	
WEI-900	New Gas Line	26-Jan-21	25-Feb-21	20	20												



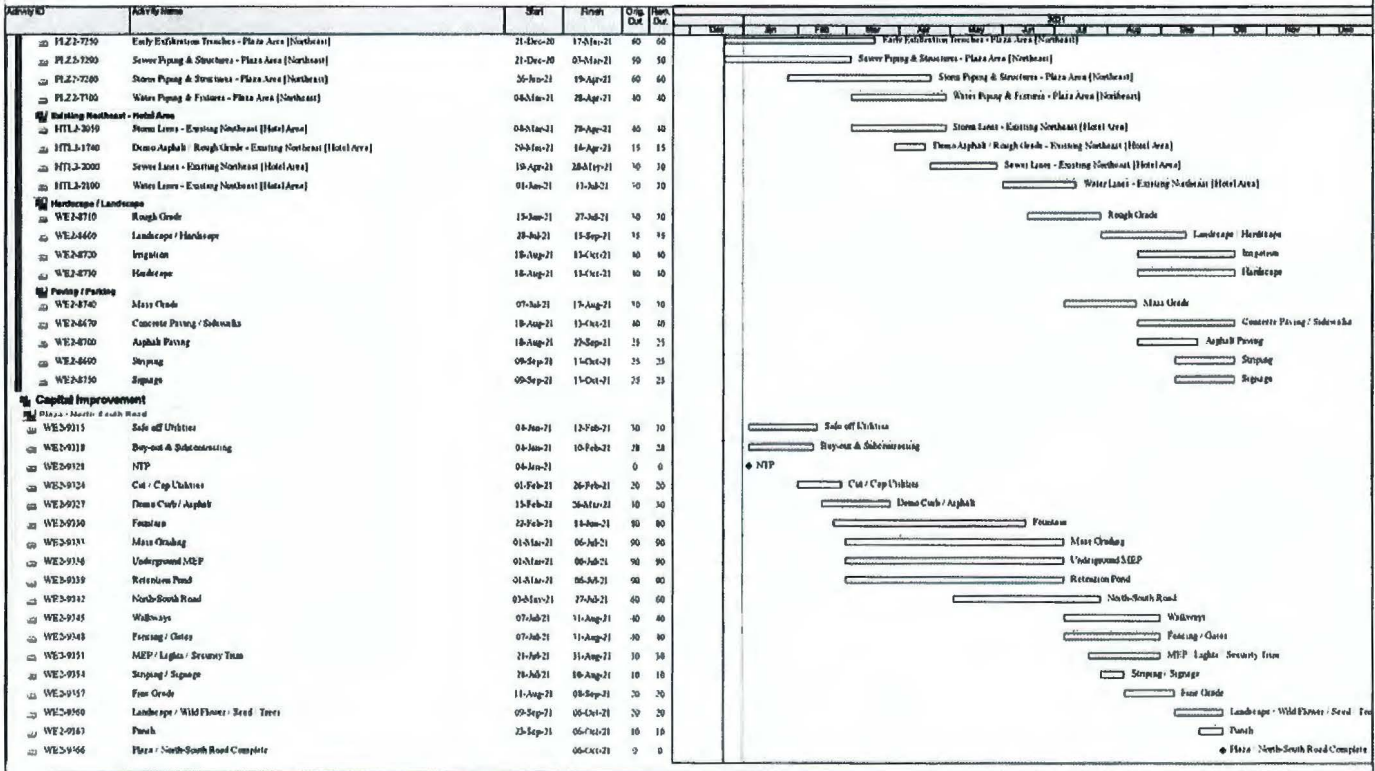
Balfour Beatty



▬ Remaining Level of Effort ▬ Remaining Work
▬ Actual Level of Effort ▬ Critical Remaining Work
◆ Actual Work ◆ Milestone

BCCCH - Civil Remaining Work in 2021

Date Date 20-Dec-20
Print Date 09-Dec-20 14:28



Balfour Beatty



Remaining Level of Effort
Actual Level of Effort
Actual Work
Remaining Work
Critical Remaining Work
Milestone

BCCCH - Concrete Remaining Work in 2021

Date Date 20-Dec-20
Print Date 09-Dec-20 14:19

Activity ID	Activity Name	Start	Finish	Orig Dur	Rem Dur	2021	2022	2023	2024	2025	2026	2027	2028	2029	2030
Broward County Convention Center - West Expansion															
West Expansion															
West Expansion Contribution Milestones															
PS1400	CFP Slab Placed		05-Jan-21	0	0										
PS1410	Start SOG Activities	03-Feb-21		0	0										
GMP No. 2 - West Expansion															
Construction - West Level															
Area A - Grid Lines W6, W8, W9															
W6 - W8															
Ground Level															
WE2-7171	Form SOG - Area A Grid Lines W19 - W15 / WK - WJ (Ground Level)	10-Feb-21	16-Feb-21	5	5										
WE2-7175	Place Rebar for SOG - Area A Grid Lines W19 - W15 / WK - WJ (Ground Level)	17-Feb-21	23-Feb-21	5	5										
WE2-7177	Pour SOG - Area A Grid Lines W19 - W15 / WK - WJ (Ground Level)	24-Feb-21	26-Feb-21	1	1										
W9 - W10															
Ground Level															
WE2-7185	Form SOG - Area A Grid Lines W14 - W11 / WK - WJ (Ground Level)	10-Feb-21	16-Feb-21	5	5										
WE2-7187	Place Rebar for SOG - Area A Grid Lines W14 - W11 / WK - WJ (Ground Level)	17-Feb-21	23-Feb-21	5	5										
WE2-7189	Pour SOG - Area A Grid Lines W14 - W11 / WK - WJ (Ground Level)	24-Feb-21	26-Feb-21	1	1										
Area B - Grid Lines W6, W8, W9															
W9 - W10															
Ground Level															
WE2-7207	Form SOG - Area B Grid Lines W11 - W10 / WK - WJ (Ground Level)	15-Feb-21	17-Feb-21	1	1										
WE2-7209	Place Rebar for SOG - Area B Grid Lines W11 - W10 / WK - WJ (Ground Level)	18-Feb-21	22-Feb-21	1	1										
WE2-7211	Pour SOG - Area B Grid Lines W11 - W10 / WK - WJ (Ground Level)	24-Feb-21	26-Feb-21	1	1										
W10 - W11															
Ground Level															
WE2-7223	Form SOG - Area B Grid Lines W10 - W9 / WK - WJ (Ground Level)	15-Feb-21	17-Feb-21	1	1										
WE2-7225	Place Rebar for SOG - Area B Grid Lines W10 - W9 / WK - WJ (Ground Level)	18-Feb-21	22-Feb-21	1	1										
WE2-7227	Pour SOG - Area B Grid Lines W10 - W9 / WK - WJ (Ground Level)	24-Feb-21	26-Feb-21	1	1										
W11 - W12															
Ground Level															
WE2-7239	Form SOG - Area B Grid Lines W9 - W10 / WK - WJ (Ground Level)	15-Feb-21	17-Feb-21	1	1										
WE2-7241	Place Rebar for SOG - Area B Grid Lines W9 - W10 / WK - WJ (Ground Level)	18-Feb-21	22-Feb-21	1	1										

Balfour Beatty



Remaining Level of Effort Remaining Work
 Actual Level of Effort Critical Remaining Work
 Actual Work Milestone

BCCCH - Concrete Remaining Work in 2021

Date Date 20-Dec-20
Print Date 09-Dec-20 14:19

Activity ID	Activity Name	Start	Finish	Org. Dur.	Rem. Dur.	2021												
						Jan	Feb	Mar	Apr	May	Jun	Jul	Aug	Sep	Oct	Nov	Dec	
WES-7261	Pour SOG - Area B Grid Lines W9 - W6 / WK - WJ (Ground Level)	25-Feb-21	25-Feb-21	1	1													
Area C - Grid Lines WK, WJ, W8																		
Ground Level																		
WES-7255	Form SOG - Area C Grid Lines W8 - W6 / WK - WJ (Ground Level)	23-Feb-21	24-Feb-21	3	3													
WES-7257	Place Rebar for SOG - Area C Grid Lines W8 - W6 / WK - WJ (Ground Level)	25-Feb-21	01-Mar-21	5	5													
WES-7259	Pour SOG - Area C Grid Lines W8 - W6 / WK - WJ (Ground Level)	02-Mar-21	02-Mar-21	1	1													
Area C - Grid Lines W8, W6																		
Ground Level																		
WES-7271	Form SOG - Area C Grid Lines W8 - W6 / WK - WJ (Ground Level)	22-Feb-21	24-Feb-21	3	3													
WES-7273	Place Rebar for SOG - Area C Grid Lines W8 - W6 / WK - WJ (Ground Level)	25-Feb-21	01-Mar-21	5	5													
WES-7275	Pour SOG - Area C Grid Lines W8 - W6 / WK - WJ (Ground Level)	02-Mar-21	02-Mar-21	1	1													
Area C - Grid Lines W8, W6																		
Ground Level																		
WES-7287	Form SOG - Area C Grid Lines W6 - W5 / WK - WJ (Ground Level)	22-Feb-21	24-Feb-21	3	3													
WES-7289	Place Rebar for SOG - Area C Grid Lines W6 - W5 / WK - WJ (Ground Level)	25-Feb-21	01-Mar-21	5	5													
WES-7291	Pour SOG - Area C Grid Lines W6 - W5 / WK - WJ (Ground Level)	02-Mar-21	02-Mar-21	1	1													
Area D - Grid Lines WK, W3, W4																		
Ground Level																		
WES-7303	Form SOG - Area D Grid Lines W3 - W4 / WK - WJ (Ground Level)	01-Mar-21	01-Mar-21	1	1													
WES-7305	Place Rebar for SOG - Area D Grid Lines W3 - W4 / WK - WJ (Ground Level)	04-Mar-21	08-Mar-21	5	5													
WES-7307	Pour SOG - Area D Grid Lines W3 - W4 / WK - WJ (Ground Level)	09-Mar-21	09-Mar-21	1	1													
Area D - Grid Lines W2, W4 (Roof)																		
Form Deck - Area D Grid Line W2 - W4 (Roof)																		
WES-1216	Form Deck - Area D Grid Line W2 - W4 (Roof)	19-Feb-21	19-Feb-21	1	1													
Lightweight - Area D Grid Line W2 - W4 (Roof)																		
WES-1218	Lightweight - Area D Grid Line W2 - W4 (Roof)	22-Feb-21	22-Feb-21	1	1													
Formprooing - Area D Grid Line W2 - W4 (Roof)																		
WES-1219	Formprooing - Area D Grid Line W2 - W4 (Roof)	22-Feb-21	01-Mar-21	5	5													
Area D - Grid Lines W4, W2																		
Ground Level																		
WES-7319	Form SOG - Area D Grid Lines W4 - W2 / WK - WJ (Ground Level)	01-Mar-21	05-Mar-21	5	5													
WES-7321	Place Rebar for SOG - Area D Grid Lines W4 - W2 / WK - WJ (Ground Level)	04-Mar-21	08-Mar-21	5	5													
WES-7323	Pour SOG - Area D Grid Lines W4 - W2 / WK - WJ (Ground Level)	09-Mar-21	09-Mar-21	1	1													

Balfour Beatty



Remaining Level of Effort
 Actual Level of Effort
 Actual Work
 Remaining Work
 Critical Remaining Work
 Milestone

BCCCH - Concrete Remaining Work in 2021

Date Date 20-Dec-20
Print Date 09-Dec-20 14:19

Activity ID	Activity Name	Start	Finish	Orig. Dur.	Rem. Dur.	2021											
						Jan	Feb	Mar	Apr	May	Jun	Jul	Aug	Sep	Oct	Nov	Dec
Low Roof																	
WE2-14152	Lightweight - Area D Onslane W4 - W7 (Roof)	24-Feb-21	26-Feb-21	1	1	Lightweight - Area D Onslane W4 - W7 (Roof)											
WE2-14172	Formproffing - Area D Onslane W4 - W7 (Roof)	25-Feb-21	03-Mar-21	5	5	□ Formproffing - Area D Onslane W4 - W7 (Roof)											
Construction																	
Area H - W8 - W9																	
WE2-14171	FRP Slabs W8 & W9 - Area H	05-Jan-21	06-Jan-21	1	1	□ FRP Slabs W8 & W9 - Area H											
Area G - W6 - W7																	
WE2-48921	Place Rebar on Deck - Area F Onslane W11 - W10 [Level 3]	06-Jan-21	12-Jan-21	1	1	□ Place Rebar on Deck - Area F Onslane W11 - W10 [Level 3]											
WE2-48911	Pour Deck - Area F Onslane W11 - W10 [Level 3]	22-Jan-21	22-Jan-21	1	1	Pour Deck - Area F Onslane W11 - W10 [Level 3]											
WE2-48941	Frame Deck - Area F Onslane W10 - W9 [Level 3]	12-Jan-21	18-Jan-21	1	1	□ Frame Deck - Area F Onslane W10 - W9 [Level 3]											
WE2-48931	Place Rebar on Deck - Area F Onslane W10 - W9 [Level 3]	19-Jan-21	21-Jan-21	1	1	□ Place Rebar on Deck - Area F Onslane W10 - W9 [Level 3]											
WE2-48911	Pour Deck - Area F Onslane W10 - W9 [Level 3]	22-Jan-21	22-Jan-21	1	1	Pour Deck - Area F Onslane W10 - W9 [Level 3]											
Area G - W6 - W7																	
WE2-49121	Frame Deck - Area G Onslane W6 - W7 [Level 3]	21-Jan-21	27-Jan-21	1	1	□ Frame Deck - Area G Onslane W6 - W7 [Level 3]											
WE2-49131	Place Rebar on Deck - Area G Onslane W6 - W7 [Level 3]	26-Jan-21	01-Feb-21	1	1	□ Place Rebar on Deck - Area G Onslane W6 - W7 [Level 3]											
WE2-49141	Pour Deck - Area G Onslane W6 - W7 [Level 3]	15-Feb-21	15-Feb-21	1	1	Pour Deck - Area G Onslane W6 - W7 [Level 3]											
Area F - W5 - W6																	
WE2-49151	Frame Deck - Area G Onslane W5 - W6 [Level 3]	02-Feb-21	08-Feb-21	1	1	□ Frame Deck - Area G Onslane W5 - W6 [Level 3]											
WE2-49161	Place Rebar on Deck - Area G Onslane W5 - W6 [Level 3]	08-Feb-21	12-Feb-21	1	1	□ Place Rebar on Deck - Area G Onslane W5 - W6 [Level 3]											
WE2-49171	Pour Deck - Area G Onslane W5 - W6 [Level 3]	15-Feb-21	15-Feb-21	1	1	Pour Deck - Area G Onslane W5 - W6 [Level 3]											
Area E - W3 - W4																	
WE2-49181	Frame Deck - Area G Onslane W3 - W4 [Level 3]	17-Feb-21	23-Feb-21	1	1	□ Frame Deck - Area G Onslane W3 - W4 [Level 3]											
WE2-49191	Place Rebar on Deck - Area G Onslane W3 - W4 [Level 3]	22-Feb-21	26-Feb-21	1	1	□ Place Rebar on Deck - Area G Onslane W3 - W4 [Level 3]											

Balfour Beatty



Remaining Level of Effort
 Actual Level of Effort
 Actual Work
 Remaining Work
 Critical Remaining Work
 Milestone

BCCCH - Concrete Remaining Work in 2021

Date: 20-Dec-20
Print Date: 09-Dec-20 14:19

Activity ID	Activity Name	Start	Finish	Orig. Dur.	Rem. Dur.	2021													
						Jan	Feb	Mar	Apr	May	Jun	Jul	Aug	Sep	Oct	Nov	Dec		
WE2-4851	Four Deck - Area C Grid Line W6 - W5 [Level 3]	25-Jan-21	25-Jan-21	1	1														
Area H - W6 - W4																			
WE2-4921	Frame Deck - Area H Grid Line W5 - W4 [Level 3]	04-Feb-21	10-Feb-21	5	5														
WE2-4921	Place Rebar on Deck - Area H Grid Line W5 - W4 [Level 3]	09-Jan-21	15-Jan-21	5	5														
WE2-4851	Four Deck - Area H Grid Line W5 - W4 [Level 3]	25-Jan-21	25-Jan-21	1	1														
W6 - W2.8																			
WE2-4924	Frame Deck - Area H Grid Line W4 - W2.8 [Level 3]	15-Jan-21	19-Jan-21	5	5														
WE2-4924	Place Rebar on Deck - Area H Grid Line W4 - W2.8 [Level 3]	18-Jan-21	24-Jan-21	5	5														
WE2-4851	Four Deck - Area H Grid Line W4 - W2.8 [Level 3]	25-Jan-21	25-Jan-21	1	1														
Substation Hall - Long Span																			
W17 - W15																			
WE2-4723	Place Rebar Deck - Long Span Area A Grid Lines W7 - W5 [Level 3]	06-Jan-21	06-Jan-21	1	1														
WE2-4727	Four Deck - Long Span Area A Grid Lines W7 - W5 [Level 3]	07-Jan-21	07-Jan-21	1	1														
W16 - W11																			
WE2-4120	Four Deck - Long Span Area A Grid Lines W5 - W11 [Level 3]	05-Jan-21	05-Jan-21	1	1														
WE2-4523	Form / Pour Flating Slab - Long Span Area A Grid Lines W6.5 - W14 [Level 3]	07-Jan-21	12-Jan-21	5	5														
WE2-4130	Cure Deck - Long Span Area A Grid Lines W5 - W11 [Level 3]	13-Jan-21	18-Jan-21	6	6														
WE2-4331	Strut Deck - Long Span Area A Grid Lines W5 - W11 [Level 3]	19-Jan-21	19-Jan-21	1	1														
Area B - W10 - W9																			
W11 - W10																			
WE2-4851	Place Rebar Deck - Long Span Area B Grid Line W11 - W10 [Level 3 / Roof]	28-Jan-21	05-Feb-21	5	5														
WE2-4851	Frame Deck - Long Span Area B Grid Line W11 - W10 [Level 3 / Roof]	29-Jan-21	04-Feb-21	1	1														
WE2-4659	Four Deck - Long Span Area B Grid Line W11 - W10 [Level 3 / Roof]	04-Feb-21	04-Feb-21	1	1														
W10 - W9																			
WE2-4851	Place Rebar Deck - Long Span Area B Grid Line W10 - W9 [Level 3 / Roof]	18-Jan-21	25-Jan-21	5	5														
WE2-4851	Frame Deck - Long Span Area B Grid Line W10 - W9 [Level 3 / Roof]	22-Jan-21	25-Jan-21	3	3														

Frame Deck - Area H Grid Line W5 - W4 [Level 3]
 Place Rebar on Deck - Area H Grid Line W5 - W4 [Level 3]
 Four Deck - Area H Grid Line W5 - W4 [Level 3]

 Frame Deck - Area H Grid Line W4 - W2.8 [Level 3]
 Place Rebar on Deck - Area H Grid Line W4 - W2.8 [Level 3]
 Four Deck - Area H Grid Line W4 - W2.8 [Level 3]

 Place Rebar Deck - Long Span Area A Grid Lines W7 - W5 [Level 3]
 Four Deck - Long Span Area A Grid Lines W7 - W5 [Level 3]

 Four Deck - Long Span Area A Grid Lines W5 - W11 [Level 3]
 Form / Pour Flating Slab - Long Span Area A Grid Lines W6.5 - W14 [Level 3]
 Cure Deck - Long Span Area A Grid Lines W5 - W11 [Level 3]
 Strut Deck - Long Span Area A Grid Lines W5 - W11 [Level 3]

 Place Rebar Deck - Long Span Area B Grid Line W11 - W10 [Level 3 / Roof]
 Frame Deck - Long Span Area B Grid Line W11 - W10 [Level 3 / Roof]
 Four Deck - Long Span Area B Grid Line W11 - W10 [Level 3 / Roof]

 Place Rebar Deck - Long Span Area B Grid Line W10 - W9 [Level 3 / Roof]
 Frame Deck - Long Span Area B Grid Line W10 - W9 [Level 3 / Roof]

Balfour Beatty



Remaining Level of Effort Remaining Work
 Actual Level of Effort Critical Remaining Work
 Actual Work Milestone

BCCCH - Concrete Remaining Work in 2021

Date Date: 20-Dec-20
Print Date: 09-Dec-20 14:19

Activity ID	Activity Name	Start	Finish	Orig. Dur.	Plan Dur.	2021											
						Jan	Feb	Mar	Apr	May	Jun	Jul	Aug	Sep	Oct	Nov	Dec
WE2-4284	Pour Deck - Long Span Area B Grid Lines W10 - W9 [Level 3 / Roof]	23-Jan-21	23-Jan-21	1	1												
<ul style="list-style-type: none"> <input type="checkbox"/> Pour Deck - Long Span Area B Grid Lines W10 - W9 [Level 3 / Roof] 																	
Area A - New Loading Deck																	
WE2-4904	Place Rebar Deck - Long Span Area C Grid Lines W6 - W8 [Level 3 / Roof]	29-Jan-21	04-Feb-21	5	5												
WE2-4901	Frame Deck - Long Span Area C Grid Lines W6 - W8 [Level 3 / Roof]	02-Feb-21	08-Feb-21	5	5												
WE2-4680	Pour Deck - Long Span Area C Grid Lines W6 - W8 [Level 3 / Roof]	09-Feb-21	09-Feb-21	1	1												
<ul style="list-style-type: none"> <input type="checkbox"/> Place Rebar Deck - Long Span Area C Grid Lines W6 - W8 [Level 3 / Roof] <input type="checkbox"/> Frame Deck - Long Span Area C Grid Lines W6 - W8 [Level 3 / Roof] <input type="checkbox"/> Pour Deck - Long Span Area C Grid Lines W6 - W8 [Level 3 / Roof] 																	
Area B																	
WE2-4907	Place Rebar Deck - Long Span Area C Grid Lines W8 - W8 [Level 3 / Roof]	17-Feb-21	25-Feb-21	5	5												
WE2-4906	Frame Deck - Long Span Area C Grid Lines W8 - W8 [Level 3 / Roof]	19-Feb-21	25-Feb-21	5	5												
WE2-4294	Pour Deck - Long Span Area C Grid Lines W8 - W8 [Level 3 / Roof]	11-Mar-21	11-Mar-21	1	1												
<ul style="list-style-type: none"> <input type="checkbox"/> Place Rebar Deck - Long Span Area C Grid Lines W8 - W8 [Level 3 / Roof] <input type="checkbox"/> Frame Deck - Long Span Area C Grid Lines W8 - W8 [Level 3 / Roof] <input type="checkbox"/> Pour Deck - Long Span Area C Grid Lines W8 - W8 [Level 3 / Roof] 																	
Area C																	
WE2-4910	Place Rebar Deck - Long Span Area C Grid Lines W6 - W3 [Level 3 / Roof]	02-Mar-21	09-Mar-21	5	5												
WE2-4909	Frame Deck - Long Span Area C Grid Lines W6 - W3 [Level 3 / Roof]	04-Mar-21	10-Mar-21	5	5												
WE2-4297	Pour Deck - Long Span Area C Grid Lines W6 - W3 [Level 3 / Roof]	11-Mar-21	11-Mar-21	1	1												
<ul style="list-style-type: none"> <input type="checkbox"/> Place Rebar Deck - Long Span Area C Grid Lines W6 - W3 [Level 3 / Roof] <input type="checkbox"/> Frame Deck - Long Span Area C Grid Lines W6 - W3 [Level 3 / Roof] <input type="checkbox"/> Pour Deck - Long Span Area C Grid Lines W6 - W3 [Level 3 / Roof] 																	
Area D																	
WE2-4971	Frame Deck - Long Span Area D Grid Lines W5 - W4 [Level 3 / Roof]	12-Mar-21	19-Mar-21	5	5												
WE2-4921	Place Rebar Deck - Long Span Area D Grid Lines W5 - W4 [Level 3 / Roof]	17-Mar-21	23-Mar-21	5	5												
WE2-4780	Pour Deck D - Long Span Area D Grid Lines W5 - W4 [Level 3 / Roof]	24-Mar-21	24-Mar-21	1	1												
<ul style="list-style-type: none"> <input type="checkbox"/> Frame Deck - Long Span Area D Grid Lines W5 - W4 [Level 3 / Roof] <input type="checkbox"/> Place Rebar Deck - Long Span Area D Grid Lines W5 - W4 [Level 3 / Roof] <input type="checkbox"/> Pour Deck D - Long Span Area D Grid Lines W5 - W4 [Level 3 / Roof] 																	
Area E																	
WE2-4910	Frame Deck - Long Span Area D Grid Lines W4 - W2 [Level 3]	29-Apr-21	05-May-21	5	5												
WE2-4911	Place Rebar Deck - Long Span Area D Grid Lines W4 - W2 [Level 3]	04-May-21	10-May-21	5	5												
WE2-4840	Pour Deck - Long Span Area D Grid Lines W4 - W2 [Level 3]	10-May-21	11-May-21	1	1												
<ul style="list-style-type: none"> <input type="checkbox"/> Frame Deck - Long Span Area D Grid Lines W4 - W2 [Level 3] <input type="checkbox"/> Place Rebar Deck - Long Span Area D Grid Lines W4 - W2 [Level 3] <input type="checkbox"/> Pour Deck - Long Span Area D Grid Lines W4 - W2 [Level 3] 																	
Area A - New Loading Deck																	
WE2-4678	FRP SCG - Area A New Loading Deck	19-Jan-21	24-Jan-21	1	1												
<ul style="list-style-type: none"> <input type="checkbox"/> FRP SCG - Area A New Loading Deck 																	
Area B - New Loading Deck																	
WE2-4731	FRP SCG - Area B New Loading Deck	23-Jan-21	26-Jan-21	1	1												
<ul style="list-style-type: none"> <input type="checkbox"/> FRP SCG - Area B New Loading Deck 																	

Balfour Beatty



Remaining Level of Effort Remaining Work
 Actual Level of Effort Critical Remaining Work
 Actual Work Milestone

BCCCH - Concrete Remaining Work in 2021

Date Date 20-Dec-20
Print Date 09-Dec-20 14:19

Activity ID	Activity Name	Start	Finish	Orig. Dur.	Rem. Dur.	2021											
						Jan	Feb	Mar	Apr	May	Jun	Jul	Aug	Sep	Oct	Nov	Dec
WE2-4741	FRP SOG - Area C New Loading Dock	27-Jan-21	28-Jan-21	1	1												
WE2-4751	FRP SOG - Area D New Loading Dock	01-Feb-21	01-Feb-21	1	1												
Exhibits & Systems																	
Exhibit Hall A (A10-A11)																	
Concessions 1.101																	
WE2-45281	FRP-1 Walls - Concessions 1.101	08-Jan-21	13-Jan-21	4	4												
WE2-45281	FRP-1 - Concessions 1.101	08-Apr-21	13-Apr-21	4	4												
Exhibit Hall G																	
Exhibit Hall G - Underground & SOG																	
WE2-41341	FRP SOG - Exhibit Hall G	06-May-21	26-May-21	15	15												
Exhibit Hall G - Interior Walk-out																	
FRP SOG - Exhibit Hall G																	
WE2-4811	FRP Housekeeping Pad - Fire Pump Room [Level 1]	15-Feb-21	16-Feb-21	5	5												
FPL Vault 1000																	
WE2-7427	Pour Ramp - FPL Vault Ramp	06-Jan-21	06-Jan-21	1	1												
WE2-7339	Form Slab - FPL Vault	07-Jan-21	08-Jan-21	2	2												
WE2-7361	Pour Slab - FPL Vault	08-Jan-21	10-Jan-21	3	3												
WE2-7367	Pour Slab - FPL Vault	15-Jan-21	16-Jan-21	1	1												
Exhibit Hall B																	
Exhibit Hall B - Underground & SOG																	
WE2-7185	FRP SOG - Exhibit Hall B	27-May-21	17-Jun-21	15	15												
Exhibit Hall B																	
Exhibit Hall B - Underground & SOG																	
WE2-7407	FRP SOG - Exhibit Hall B	18-Jun-21	09-Jul-21	13	13												
OSP																	
Generator Room (G.A.10)																	
WE-34255	FRP Housekeeping Pad - Generator Room	04-Jan-21	05-Jan-21	2	2												
Switchgear Room (G.A.10) (G.A.10)																	
WE2-5425	Layout Housekeeping Pad - Switchgear Room	15-Jan-21	18-Jan-21	3	3												
WE2-5445	FRP Housekeeping Pad - Switchgear Room	26-Jan-21	01-Feb-21	5	5												
Chiller Room																	
WE2-5135	Layout - FRP Housekeeping Pad - Chiller Room	04-Feb-21	08-Feb-21	5	5												

Balfour Beatty



Remaining Level of Effort
Actual Level of Effort
Actual Work
Remaining Work
Critical Remaining Work
Milestone

BCCCH - Mechanical 2021 Work

Date Date 20-Dec-20
Print Date 09-Dec-20 17:21

Activity ID	Activity Name	Start	Finish	Est. Dur.	Plan Dur.	2021	2022											
						Jan	Feb	Mar	Apr	May	Jun	Jul	Aug	Sep	Oct	Nov	Dec	
Broward County Convention Center - West Expansion																		
West Expansion																		
West Expansion Construction Milestones																		
PM-150	Chilled Water Complete		01-Jan-21	0	0													
PM-170	Conditioned Air		02-Jan-21	0	0													
OMP No. 2 - West Expansion																		
Construction																		
Building Envelope																		
Roof																		
Area A-Low Roof																		
WE2-550	Mechanical Supports - Area A [Low Roof]	22-Dec-20	16-Jan-21	20	20													
WE2-550	Mechanical Equipment / RTUs - Other Sections - Area A [Low Roof]	18-Jan-21	12-Feb-21	20	20													
WE2-555	Set Cooling Towers - Area A [Low Roof]	18-Jan-21	23-Jan-21	5	5													
Area D																		
WE2-600	Mechanical Supports - Area D [Roof]	24-Mar-21	06-Apr-21	10	10													
Utilities & Systems																		
Exhibit Hall A (A1040)																		
Supporting Construction / Exhibit Spaces																		
Construction 1,2,3																		
WE2-4513	Install Fan Coils - Construction 1 101	31-Dec-20	05-Jan-21	3	3													
Construction 1, K, 01																		
WE2-4574	Install Fan Coil Units - Construction 1 K 01	09-Mar-21	23-Mar-21	3	3													
Exhibit Hall C - Interior Build-out																		
WE2-6420	Overhead Mechanical - Exhibit Hall C	11-Feb-21	03-Mar-21	15	15													
WE2-6400	Overhead Mechanical Trim - Exhibit Hall C	05-Jun-21	01-Jul-21	20	20													
WE2-6780	MEPP Wall Trim - Exhibit Hall C	12-Jul-21	23-Jul-21	10	10													
WE2-6441	Prep / Seal Concrete - Exhibit Hall C	19-Jul-21	10-Aug-21	10	10													
WE2-6461	Pre-Panels / Final Clean - Exhibit Hall C	02-Aug-21	06-Aug-21	3	3													
WE2-6465	Sub-Contractor Panels - Exhibit Hall C	06-Aug-21	13-Aug-21	5	5													
WE2-6467	Owner Panels - Exhibit Hall C	16-Aug-21	19-Aug-21	4	4													
WE2-6469	FFE Ready - Exhibit Hall C		19-Aug-21	0	0													
Construction 1, K, 01																		
WE2-13150	Mechanical / HVAC Rough-In - Men's Restroom 1A07 [Level 1]	11-Mar-21	24-Mar-21	10	10													
WE2-13450	Set & Connect FCUs - Men's Restroom 1A07 [Level 1]	15-May-21	19-May-21	5	5													
Fire Pump Room 1A07																		
WE2-4901	Outside Air Supply Ductwork - Fire Pump Room [Level 1]	23-Mar-21	26-Mar-21	5	5													
WE2-4911	FCUs - Fire Pump Room [Level 1]	19-Apr-21	21-Apr-21	5	5													
WE2-1806	FFL Work 1806																	
WE2-7133	Install Louvers Level 1 - FFL Work	16-Sep-21	19-Jan-22	7	7													
Exhibit Hall B - Interior Build-out																		
WE2-6960	Overhead Mechanical - Exhibit Hall B	04-Mar-21	24-Mar-21	15	15													
WE2-7070	Overhead Mechanical Trim - Exhibit Hall B	25-Jun-21	09-Jul-21	12	10													
WE2-7100	MEPP Wall Trim - Exhibit Hall B	02-Aug-21	20-Aug-21	15	11													

Balfour Beatty



Remaining Level of Effort Remaining Work
Actual Level of Effort Critical Remaining Work
Actual Work Milestone

BCCCH - Mechanical 2021 Work

Date Date 20-Dec-20
Print Date 09-Dec-20 17:21

Activity ID	Activity Name	Start	Finish	Est. Dur.	Plan Dur.	2021	2022
WE2-7120	Prep / Seal Concrete - Exhibit Hall B	23-Aug-21	05-Sep-21	15	10		
WE2-12120	Mechanical / HVAC Rough-In - Women Restroom 1B01 [Level 1]	01-Apr-21	14-Apr-21	10	10		
WE2-12116	Set & Connect FCUs - Women Restroom 1B01 [Level 1]	04-Jun-21	10-Jun-21	5	5		
WE2-12170	Mechanical / HVAC Rough-In - Men Restroom 1B07 [Level 1]	13-Apr-21	26-Apr-21	10	10		
WE2-12150	Set & Connect FCUs - Men Restroom 1B07 [Level 1]	15-Jun-21	22-Jun-21	5	5		
WE2-11770	Mechanical / HVAC Rough-In - Women Restroom 1B08 [Level 1]	20-Apr-21	03-May-21	10	10		
WE2-11750	Set & Connect FCUs - Women Restroom 1B08 [Level 1]	23-Jun-21	29-Jun-21	5	5		
WE2-7437	Overhead Mechanical Trim - Exhibit Hall A	27-Apr-21	17-May-21	11	10		
WE2-7429	Overhead Mechanical Trim - Exhibit Hall A	19-Jul-21	30-Jul-21	10	10		
WE2-7417	MSPF Wall Trim - Exhibit Hall A	23-Aug-21	13-Sep-21	11	11		
WE2-7441	Prep / Seal Concrete - Exhibit Hall A	07-Sep-21	20-Sep-21	10	10		
WE2-13070	Mechanical / HVAC Rough-In - Women Restroom 1C09 [Level 1]	14-May-21	27-May-21	10	10		
WE2-13130	Set & Connect FCUs - Women Restroom 1C09 [Level 1]	15-Jul-21	21-Jul-21	5	5		
WE2-11650	Mechanical / HVAC Rough-In - Men Restroom 1D01 [Level 1]	19-May-21	01-Jun-21	10	10		
WE2-11730	Set & Connect FCUs - Men Restroom 1D01 [Level 1]	23-Jul-21	29-Jul-21	5	5		
Area A							
WE2-10910	Mechanical / HVAC Rough-In - Area A [Level 2]	08-May-21	19-May-21	10	10		
WE2-11210	HVAC Truss - Area A [Level 2]	17-May-21	21-May-21	5	5		
Area B							
WE2-11280	Mechanical / HVAC Rough-In - Area B [Level 2]	22-May-21	02-Jun-21	10	10		
WE2-11340	HVAC Truss - Area B [Level 2]	17-May-21	21-May-21	5	5		
Area C							
WE2-11500	Mechanical / HVAC Rough-In - Area C [Level 2]	19-Apr-21	30-Apr-21	10	10		
WE2-11640	HVAC Truss - Area C [Level 2]	15-Jun-21	21-Jun-21	5	5		
Area D							
WE2-11840	Mechanical / HVAC Rough-In - Area D [Level 2]	17-May-21	28-May-21	10	10		
WE2-11920	HVAC Truss - Area D [Level 2]	14-Jul-21	20-Jul-21	5	5		
Area E							
Area E - Kitchen							
US2-17911	Mechanical / HVAC Rough-In - Area E Kitchen [Level 1]	16-Feb-21	01-Mar-21	10	10		
Area H - Kitchen							
WE2-49951	Mechanical / HVAC Rough-In - Area H Kitchen [Level 1]	04-May-21	17-May-21	10	10		
CEP							
WE2-8489	Move Conditioned Air - CEP	02-Jun-21	02-Jun-21	1	1		
Operational Room (OAR)							
WE2-5781	Storm Drain Piping - Generation Room	16-May-21	24-May-21	5	5		

Balfour Beatty

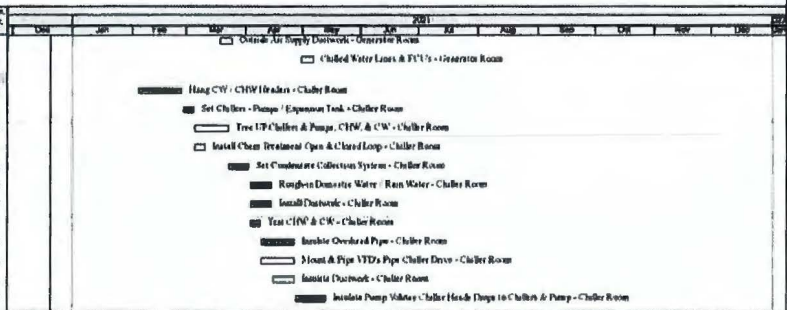


Remaining Level of Effort
Actual Level of Effort
Actual Work
Remaining Work
Critical Remaining Work
Milestone

BCCCH - Mechanical 2021 Work

Draw Date: 20-Dec-20
Print Date: 09-Dec-20 17:21

Activity ID	Activity Name	Start	Finish	Orig. Dur.	Rem. Dur.
WE2-1153	Outside Air Supply Ductwork - Generator Room	16-Mar-21	24-Mar-21	5	5
WE2-1155	Chilled Water Lines & FCUs - Generator Room	16-Apr-21	06-May-21	5	5
WE2-1154	Hang CW / CHW Headers - Chiller Room	04-Feb-21	26-Feb-21	23	20
WE2-1155	Set Chiller - Pumps / Expansion Tank - Chiller Room	27-Feb-21	04-Mar-21	5	5
WE2-1163	Tree UP Chiller & Pumps, CHW, & CW - Chiller Room	05-Mar-21	23-Mar-21	15	15
WE2-1165	Install Chem Treatment Open & Closed Loop - Chiller Room	05-Mar-21	10-Mar-21	5	5
WE2-1162	Set Condensate Collection System - Chiller Room	25-Mar-21	01-Apr-21	19	10
WE2-1073	Roughin Domestic Water / Rain Water - Chiller Room	01-Apr-21	14-Apr-21	14	10
WE2-1113	Install Domestic - Chiller Room	01-Apr-21	14-Apr-21	14	10
WE2-1175	Test CHW & CW - Chiller Room	05-Apr-21	05-Apr-21	5	5
WE2-1181	Insulate Overhead Pipe - Chiller Room	09-Apr-21	26-Apr-21	15	15
WE2-1199	Mount & Pipe VFDs Pipe Chiller Drive - Chiller Room	09-Apr-21	26-Apr-21	15	15
WE2-1165	Insulate Ductwork - Chiller Room	15-Apr-21	26-Apr-21	19	10
WE2-1205	Insulate Pump Valves Chiller Head Drops to Chiller & Pump - Chiller Room	25-Apr-21	13-May-21	13	15



Balfour Beatty



■ Remaining Level of Effort Remaining Work
■ Actual Level of Effort Critical Remaining Work
■ Actual Work ◆ Milestone

BCCCH - Fire Protection Remaining Work in 2021

Date Date 28-Dec-20
Print Date 09-Dec-20 14:33

Activity ID	Activity Name	Start	Finish	Orig. Est.	Rem. Est.	2021											
						Jan	Feb	Mar	Apr	May	Jun	Jul	Aug	Sep	Oct	Nov	Dec
Broward County Convention Center - West Expansion																	
West Expansion																	
GMF No. 2 - West Expansion																	
Installation & Systems																	
Exhibit Hall C - Interior Build-out																	
WE2-4440	Overhead Fire Sprinkler - Exhibit Hall C	11-Mar-21	26-Mar-21	10	10												
WE2-13350	Fire Sprinkler Rough-in - Men's Restroom 1A07 [Level 1]	25-Feb-21	16-Mar-21	10	10												
WE2-13180	Fire Sprinkler Trim - Men's Restroom 1A07 [Level 1]	13-Jun-21	17-Jun-21	5	5												
WE2-4941	Set Fire Pump - Fire Pump Room [Level 1]	23-Feb-21	26-Feb-21	5	5												
WE2-4802	Set Jockey Pump - Fire Pump Room [Level 1]	01-Mar-21	03-Mar-21	5	5												
WE2-4921	Install 8" Fire Pump Discharge - Level 1 & 2 - Fire Pump Room [Level 1]	06-Apr-21	15-Apr-21	5	5												
Exhibit Hall B - Interior Build-out																	
WE2-6990	Overhead Fire Sprinkler - Exhibit Hall B	01-Apr-21	16-Apr-21	10	10												
WE2-12100	Fire Sprinkler Rough-in - Women Restroom 1B01 [Level 1]	18-Mar-21	13-Apr-21	10	10												
WE2-12250	Fire Sprinkler Trim - Women Restroom 1B01 [Level 1]	01-Jul-21	09-Jul-21	5	5												
WE2-12450	Fire Sprinkler Rough-in - Men Restroom 1B07 [Level 1]	10-Mar-21	13-Apr-21	10	10												
WE2-12650	Fire Sprinkler Trim - Men Restroom 1B07 [Level 1]	14-Jul-21	31-Jul-21	5	5												
WE2-12750	Fire Sprinkler Rough-in - Women Restroom 1B09 [Level 1]	06-Apr-21	19-Apr-21	10	10												
WE2-12950	Fire Sprinkler Trim - Women Restroom 1B09 [Level 1]	22-Jul-21	26-Jul-21	5	5												
Exhibit Hall A - Interior Build-out																	
WE2-7630	Overhead Fire Sprinkler - Exhibit Hall A	23-Mar-21	09-Jun-21	10	10												
WE2-12050	Fire Sprinkler Rough-in - Women Restroom 1C09 [Level 1]	10-Apr-21	13-May-21	10	10												
WE2-13200	Fire Sprinkler Trim - Women Restroom 1C09 [Level 1]	13-Aug-21	16-Aug-21	5	5												
WE2-12650	Fire Sprinkler Rough-in - Men Restroom 1D01 [Level 1]	09-Mar-21	18-May-21	10	10												
WE2-12850	Fire Sprinkler Trim - Men Restroom 1D01 [Level 1]	20-Aug-21	20-Aug-21	5	5												
Integers																	
Area A																	
WE2-10990	Fire Sprinkler Rough-in - Area A [Level 2]	22-Feb-21	05-Mar-21	10	10												
WE2-11000	Fire Sprinkler Trim - Area A [Level 2]	24-May-21	26-May-21	5	5												
Area B																	
WE2-11260	Fire Sprinkler Rough-in - Area B [Level 2]	08-Mar-21	18-May-21	10	10												
WE2-11320	Fire Sprinkler Trim - Area B [Level 2]	28-May-21	28-May-21	5	5												
Area C																	
WE2-11540	Fire Sprinkler Rough-in - Area C [Level 2]	06-Apr-21	16-Apr-21	10	10												

Balfour Beatty



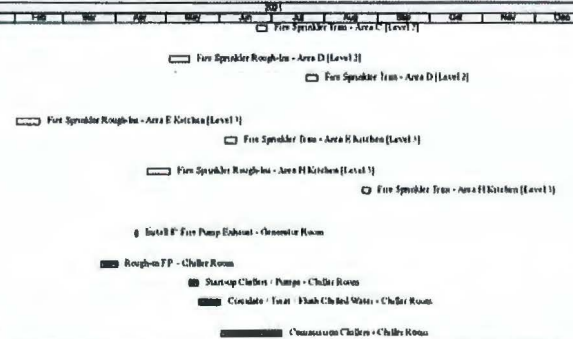
Page 1 of 2

Remaining Level of Effort
Actual Level of Effort
Actual Work
Remaining Work
Critical Remaining Work
Milestone

BCCCH - Fire Protection Remaining Work in 2021

Date Date 20-Dec-20
Print Date 09-Dec-20 14:33

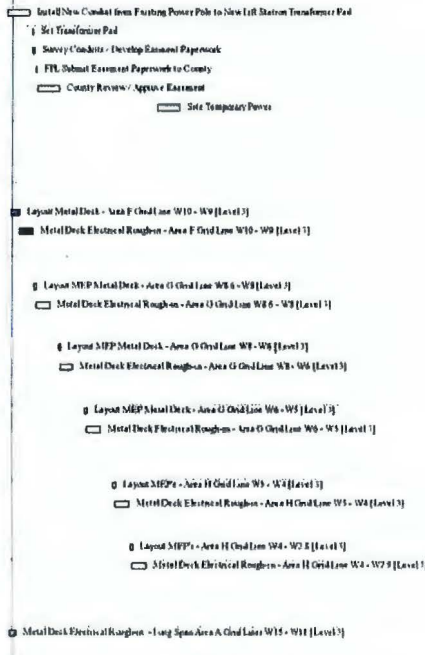
Activity ID	Activity Name	Start	Finish	Orig. Dur.	Rem. Dur.	2021												
						Jan	Feb	Mar	Apr	May	Jun	Jul	Aug	Sep	Oct	Nov	Dec	
WE2-11460	Fire Sprinkler Trim - Area D [Level 2]	22-Jun-21	28-Jun-21	5	5													
Area D																		
WE2-11820	Fire Sprinkler Rough-ins - Area D [Level 2]	05-May-21	14-May-21	10	10													
WE2-11940	Fire Sprinkler Trim - Area D [Level 2]	21-Jun-21	25-Jun-21	5	5													
Area E - Kitchen																		
WE2-17911	Fire Sprinkler Rough-ins - Area E Kitchen [Level 1]	02-Feb-21	15-Feb-21	10	10													
WE2-43341	Fire Sprinkler Trim - Area E Kitchen [Level 1]	04-Jun-21	10-Jun-21	5	5													
Area H - Kitchen																		
WE2-49941	Fire Sprinkler Rough-ins - Area H Kitchen [Level 1]	20-Apr-21	03-May-21	10	10													
WE2-7129	Fire Sprinkler Trim - Area H Kitchen [Level 1]	25-Aug-21	27-Aug-21	5	5													
CSP																		
Generator Room (RA-04)																		
WE2-1403	Install 5" Fire Pump Exhaust - Generator Room	18-Apr-21	18-Apr-21	2	2													
Chiller Rooms																		
WE2-5035	Rough-in FP - Chiller Room	25-May-21	08-Apr-21	10	10													
WE2-7467	Start-up Chillers / Pumps - Chiller Room	14-May-21	19-May-21	5	5													
WE2-7469	Condensate / Treat / Flush Chilled Water - Chiller Room	20-May-21	01-Jun-21	10	10													
Test / Commissioning																		
WE2-7471	Commission Chillers - Chiller Room	02-Jun-21	07-Jul-21	25	25													



BCCCH - Electrical 2021 Work

Date Date 20-Dec-20
Print Date 09-Dec-20 17:22

Activity ID	Activity Name	Start	Finish	Org. DA	Plan. Dur.	2021	2022	2023	2024	2025	2026	2027	2028	2029	2030
Broward County Convention Center - West Expansion															
West Expansion															
GMP No. 1 - Warehouse Demo & Utility Re-Alignment															
UR Station															
WE1-745	Install New Conduit from Existing Power Poles to New Left Station Transformer	20-Dec-20	09-Jan-21	10	10										
WE1-773	Set Transformer Pad	11-Jan-21	11-Jan-21	1	1										
WE1-1388	Survey Conduits / Develop Estimate Paperwork	17-Jan-21	13-Jun-21	3	2										
WE1-1390	PPL Submit Estimate Paperwork to County	13-Jan-21	13-Jan-21	1	1										
WE1-1400	County Review / Approve Estimate	16-Jan-21	23-Jan-21	10	10										
WE1-953	Site Temporary Power	16-Mar-21	25-Sep-21	10	10										
GMP No. 2 - West Expansion															
Construction															
Structure															
Building Area (204+0+0) - Old Lines W0 - W9															
W0 - W9															
WE2-4931	Layout Metal Deck - Area F Grid Line W0 - W9 [Level 3]	31-Dec-20	04-Jan-21	2	2										
WE2-4931	Metal Deck Electrical Rough-in - Area F Grid Line W0 - W9 [Level 3]	04-Jan-21	11-Jan-21	6	4										
W6 - W8															
WE2-4911	Layout MEP Metal Deck - Area G Grid Line W6 - W8 [Level 3]	17-Jan-21	13-Jan-21	3	2										
WE2-4931	Metal Deck Electrical Rough-in - Area G Grid Line W6 - W8 [Level 3]	13-Jan-21	20-Jan-21	6	6										
W3 - W5															
WE2-4911	Layout MEP Metal Deck - Area G Grid Line W3 - W5 [Level 3]	23-Jan-21	26-Jan-21	2	2										
WE2-4931	Metal Deck Electrical Rough-in - Area G Grid Line W3 - W5 [Level 3]	26-Jan-21	01-Feb-21	6	6										
W6 - W8															
WE2-4971	Layout MEP Metal Deck - Area G Grid Line W6 - W8 [Level 3]	08-Feb-21	09-Feb-21	2	2										
WE2-4991	Metal Deck Electrical Rough-in - Area G Grid Line W6 - W8 [Level 3]	09-Feb-21	16-Feb-21	6	6										
W3 - W5															
WE2-4901	Layout MEPs - Area H Grid Line W3 - W5 [Level 3]	23-Feb-21	24-Feb-21	2	2										
WE2-4931	Metal Deck Electrical Rough-in - Area H Grid Line W3 - W5 [Level 3]	24-Feb-21	03-Mar-21	6	6										
W4 - W6															
WE2-4921	Layout MEPs - Area H Grid Line W4 - W6 [Level 3]	03-Mar-21	05-Mar-21	2	2										
WE2-4971	Metal Deck Electrical Rough-in - Area H Grid Line W4 - W6 [Level 3]	05-Mar-21	14-Mar-21	6	6										
Bridges/Hall - Long Span															
Area A: W6 - W9															
W6 - W9															
WE2-4900	Metal Deck Electrical Rough-in - Long Span Area A Grid Lines W6 - W9 [Level 3]	09-Dec-20	02-Jan-21	1	1										



Balfour Beatty



Remaining Level of Effort
Actual Level of Effort
Actual Work
Remaining Work
Critical Remaining Work
Milestone

BCCCH - Electrical 2021 Work

Date Date 20-Dec-20
Print Date 09-Dec-20 17:22

Activity ID	Activity Name	Start	Finish	Qty	Unit	2021	2022	2023	2024	2025	2026	2027	2028	2029	2030
WE2-4444	Layout MEP Metal Deck - Long Span Area B Chd Line W11 - W10 [Level 3 / R	26-Jan-21	26-Jan-21	1	1										
WE2-4444	Metal Deck Electrical Rough-in - Long Span Area B Chd Line W11 - W10 [Lev	27-Jan-21	03-Feb-21	5	5										
WE2-4444	Metal Deck Electrical Rough-in - Long Span Area B Chd Line W11 - W10 [Level 3 / Roof														
WE2-4487	Layout Metal Deck MEP - Long Span Area B Chd Line W10 - W9 [Level 3 / R	15-Jan-21	15-Jan-21	1	1										
WE2-4487	Metal Deck Electrical Rough-in - Long Span Area B Chd Line W10 - W9 [Leve	16-Jan-21	20-Jan-21	5	5										
WE2-4487	Metal Deck Electrical Rough-in - Long Span Area B Chd Line W10 - W9 [Level 3 / Roof														
WE2-4921	Layout MEP Metal Deck - Long Span Area C Chd Line W16 - W8 [Level 3 / R	26-Jan-21	26-Jan-21	1	1										
WE2-4453	Metal Deck Electrical Rough-in - Long Span Area C Chd Line W16 - W8 [Lev	27-Jan-21	03-Feb-21	5	5										
WE2-4921	Metal Deck Electrical Rough-in - Long Span Area C Chd Line W16 - W8 [Level 3 / Roof														
WE2-4991	Layout MEP Metal Deck - Long Span Area C Chd Line W16 - W9 [Level 3 / R	11-Feb-21	11-Feb-21	1	1										
WE2-4991	Metal Deck Electrical Rough-in - Long Span Area C Chd Line W16 - W9 [Leve	12-Feb-21	19-Feb-21	6	6										
WE2-4991	Metal Deck Electrical Rough-in - Long Span Area C Chd Line W16 - W9 [Level 3 / Roof														
WE2-4499	Layout MEP Metal Deck - Long Span Area C Chd Line W16 - W5 [Level 3 / R	24-Feb-21	24-Feb-21	1	1										
WE2-4499	Metal Deck Electrical Rough-in - Long Span Area C Chd Line W16 - W5 [Leve	24-Feb-21	04-Mar-21	6	6										
WE2-4991	Metal Deck Electrical Rough-in - Long Span Area C Chd Line W16 - W5 [Level 3 / Roof														
WE2-4991	Layout MEPs - Long Span Area D Chd Line W4 - W2 [Level 3 / Roof	03-Mar-21	04-Mar-21	2	2										
WE2-4463	Metal Deck Electrical Rough-in - Long Span Area D Chd Line W4 - W2 [Level	04-Mar-21	11-Mar-21	6	6										
WE2-4991	Metal Deck Electrical Rough-in - Long Span Area D Chd Line W4 - W2 [Level 3 / Roof														
WE2-4991	Layout MEPs - Long Span Area D Chd Line W4 - W2 [Level 3 / Roof	20-Apr-21	21-Apr-21	2	2										
WE2-4463	Metal Deck Electrical Rough-in - Long Span Area D Chd Line W4 - W2 [Lev	21-Apr-21	28-Apr-21	6	6										
WE2-4991	Metal Deck Electrical Rough-in - Long Span Area D Chd Line W4 - W2 [Level 3 / Roof														
WE2-5680	Electrical To Equipment - Area A [Low Roof	15-Feb-21	12-Mar-21	20	20										
WE2-5700	Lightning Protection - Area A [Low Roof	16-Feb-21	24-Mar-21	20	20										
WE2-5820	Electrical To Equipment - Area B [Roof	21-Apr-21	11-May-21	13	13										
WE2-5840	Lightning Protection - Area B [Roof	21-Apr-21	11-May-21	13	13										
WE2-6200	Electrical To Equipment - Area C [Roof	12-May-21	02-Jun-21	13	13										
WE2-6220	Lightning Protection - Area C [Roof	12-May-21	02-Jun-21	13	13										
WE2-6440	Electrical To Equipment - Area D [Roof	01-Jun-21	23-Jun-21	13	13										
WE2-6460	Lightning Protection - Area D [Roof	01-Jun-21	23-Jun-21	13	13										
WE2-4191	Ten Fire Alarm - Concessions 1101	10-Apr-21	06-May-21	1	1										

Balfour Beatty

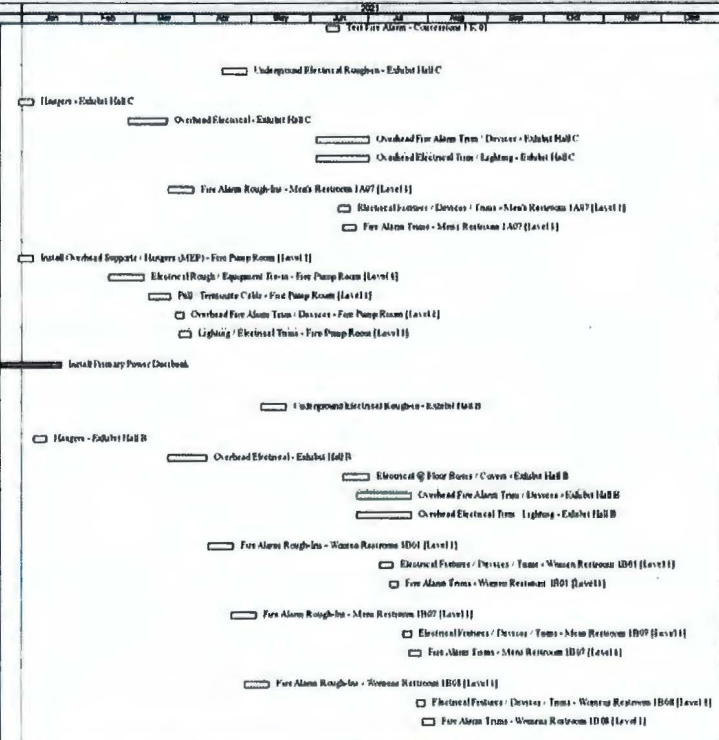


Remaining Level of Effort
 Actual Level of Effort
 Actual Work
 Remaining Work
 Critical Remaining Work
 Milestones

BCCCH - Electrical 2021 Work

Date Date: 20-Dec-20
Print Date: 09-Dec-20 17:22

Activity ID	Activity Name	Start	Finish	Org. Df	Work Df	2021												
						Jan	Feb	Mar	Apr	May	Jun	Jul	Aug	Sep	Oct	Nov	Dec	
WE2-4001	Test Fire Alarm - Concessions 1 K/G	09-Jan-21	15-Jan-21	5	5													
Exhibit Hall C - Underground & 800																		
WE2-4171	Underground Electrical Rough-in - Exhibit Hall C	15-Apr-21	28-Apr-21	14	10													
Exhibit Hall C - Interior Build-out																		
WE2-4288	Hangers - Exhibit Hall C	30-Dec-20	06-Jan-21	5	5													
WE2-4500	Overhead Electrical - Exhibit Hall C	25-Feb-21	17-Mar-21	11	15													
WE2-4540	Overhead Fire Alarm Trunk / Devices - Exhibit Hall C	04-Jun-21	01-Jul-21	20	20													
WE2-4560	Overhead Electrical Trunk / Lighting - Exhibit Hall C	04-Jun-21	01-Jul-21	20	20													
Men's Restroom 1A07																		
WE2-1510	Fire Alarm Rough-In - Men's Restroom 1A07 [Level 1]	16-Mar-21	11-Apr-21	19	10													
WE2-1590	Electrical Fixtures / Devices / Trunk - Men's Restroom 1A07 [Level 1]	15-Jun-21	21-Jun-21	5	5													
WE2-1600	Fire Alarm Trunk - Men's Restroom 1A07 [Level 1]	18-Jun-21	25-Jun-21	5	5													
Fire Pump Room 1A07																		
WE2-4821	Install Overhead Supports / Hangers (MEP) - Fire Pump Room [Level 1]	10-Dec-20	06-Jan-21	5	5													
WE2-4831	Electrical Rough / Equipment Trunk - Fire Pump Room [Level 1]	15-Feb-21	01-Mar-21	11	15													
WE2-4851	Pull / Terminate Cable - Fire Pump Room [Level 1]	08-Mar-21	04-Apr-21	10	10													
WE2-4871	Overhead Fire Alarm Trunk / Devices - Fire Pump Room [Level 1]	23-Mar-21	24-Apr-21	5	5													
WE2-4891	Lighting / Electrical Trunk - Fire Pump Room [Level 1]	24-Mar-21	10-Apr-21	5	5													
Fire Utility Room																		
WE2-8731	Install Primary Power Distribution	21-Dec-20	21-Jan-21	21	25													
Exhibit Hall B - Underground & 800																		
WE2-7579	Underground Electrical Rough-in - Exhibit Hall B	06-Aug-21	19-Sep-21	10	10													
Exhibit Hall B - Interior Build-out																		
WE2-6890	Hangers - Exhibit Hall B	07-Jan-21	11-Jan-21	5	5													
WE2-6970	Overhead Electrical - Exhibit Hall B	18-Mar-21	07-Apr-21	11	15													
WE2-7070	Electrical @ Floor Boxes / Cables - Exhibit Hall B	18-Jun-21	01-Jul-21	10	10													
WE2-7050	Overhead Fire Alarm Trunk / Devices - Exhibit Hall B	25-Jun-21	23-Jul-21	20	20													
WE2-7060	Overhead Electrical Trunk / Lighting - Exhibit Hall B	25-Jun-21	23-Jul-21	20	20													
Women Restroom 1B04																		
WE2-1230	Fire Alarm Rough-In - Women Restroom 1B04 [Level 1]	04-Apr-21	21-Apr-21	10	10													
WE2-1260	Electrical Fixtures / Devices / Trunk - Women Restroom 1B04 [Level 1]	07-Jul-21	13-Jul-21	5	5													
WE2-1210	Fire Alarm Trunk - Women Restroom 1B04 [Level 1]	12-Jul-21	16-Jul-21	5	5													
Men's Restroom 1B07																		
WE2-1240	Fire Alarm Rough-In - Men's Restroom 1B07 [Level 1]	20-Apr-21	05-May-21	10	10													
WE2-1260	Electrical Fixtures / Devices / Trunk - Men's Restroom 1B07 [Level 1]	19-Jul-21	26-Jul-21	5	5													
WE2-1260	Fire Alarm Trunk - Men's Restroom 1B07 [Level 1]	22-Jul-21	28-Jul-21	5	5													
Women Restroom 1B08																		
WE2-1770	Fire Alarm Rough-In - Women Restroom 1B08 [Level 1]	27-Apr-21	14-May-21	10	10													
WE2-1240	Electrical Fixtures / Devices / Trunk - Women Restroom 1B08 [Level 1]	26-Jul-21	10-Jul-21	5	5													
WE2-1260	Fire Alarm Trunk - Women Restroom 1B08 [Level 1]	29-Jul-21	04-Aug-21	5	5													



Balfour Beatty



Remaining Level of Effort
Actual Level of Effort
Remaining Work
Critical Remaining Work
Milestone

BCCCH - Electrical 2021 Work

Date Date 20-Dec-20
Print Date 09-Dec-20 17:22

Activity ID	Activity Name	Start	Finish	Org. Dst.	Plan Dst.	2021	2022	2023	2024	2025	2026	2027	2028	2029	2030
WED-7401	Underground Electrical Rough-in - Exhibit Hall A	27-Aug-21	10-Jun-21	10	10										
WED-7449	Hangers - Exhibit Hall A	16-Mar-21	23-Mar-21	5	5										
WED-7435	Overhead Electrical - Exhibit Hall A	11-Aug-21	01-Jun-21	11	11										
WED-7457	Electrical @ Floor Boxes / Covers - Exhibit Hall A	12-Jul-21	23-Jul-21	10	10										
WED-7425	Overhead Fire Alarm Truss / Devices - Exhibit Hall A	19-Jul-21	13-Aug-21	20	20										
WED-7427	Overhead Electrical Truss - Lighting - Exhibit Hall A	19-Jul-21	13-Aug-21	20	20										
WED-11690	Fire Alarm Rough-In - Women Restroom IC09 [Level 1]	21-Aug-21	04-Jun-21	10	10										
WED-11320	Electrical Fixtures / Devices / Truss - Women Restroom IC09 [Level 1]	16-Aug-21	20-Aug-21	5	5										
WED-11100	Fire Alarm Truss - Women Restroom IC09 [Level 1]	19-Aug-21	25-Aug-21	5	5										
WED-11480	Fire Alarm Rough-In - Mens Restroom ID01 [Level 1]	26-Aug-21	09-Jun-21	10	10										
WED-11200	Electrical Fixtures / Devices / Truss - Mens Restroom ID01 [Level 1]	24-Aug-21	30-Aug-21	5	5										
WED-11900	Fire Alarm Truss - Mens Restroom ID01 [Level 1]	27-Aug-21	02-Sep-21	5	5										
WED-10930	Fire Alarm Rough-In - Area A [Level 2]	01-Mar-21	12-Jun-21	10	10										
WED-11090	Electrical Fixtures / Devices / Truss - Area A [Level 2]	26-Aug-21	02-Jun-21	5	5										
WED-11100	Fire Alarm Truss - Area A [Level 2]	01-Jun-21	07-Jun-21	5	5										
WED-11270	Fire Alarm Rough-In - Area B [Level 2]	15-Mar-21	26-Jun-21	10	10										
WED-11190	Electrical Fixtures / Devices / Truss - Area B [Level 2]	26-Aug-21	02-Jun-21	5	5										
WED-11400	Fire Alarm Truss - Area B [Level 2]	01-Jun-21	07-Jun-21	5	5										
WED-11550	Fire Alarm Rough-In - Area C [Level 2]	12-Apr-21	23-Apr-21	10	10										
WED-11670	Electrical Fixtures / Devices / Truss - Area C [Level 2]	24-Jun-21	10-Jun-21	5	5										
WED-11680	Fire Alarm Truss - Area C [Level 2]	28-Nov-21	06-Jul-21	5	5										
WED-11830	Fire Alarm Rough-In - Area D [Level 2]	19-Aug-21	21-Aug-21	10	10										
WED-11950	Electrical Fixtures / Devices / Truss - Area D [Level 2]	23-Jul-21	29-Jul-21	5	5										
WED-11960	Fire Alarm Truss - Area D [Level 2]	28-Jul-21	03-Aug-21	5	5										
WED-47941	Fire Alarm Rough-In - Area E Kitchen [Level 3]	23-Feb-21	08-Jun-21	10	10										
WED-48131	Electrical Fixtures / Devices / Truss - Area E Kitchen [Level 3]	11-Jun-21	17-Jun-21	5	5										
WED-48161	Fire Alarm Truss - Area E Kitchen [Level 3]	11-Jun-21	17-Jun-21	5	5										
WED-19971	Fire Alarm Rough-In - Area H Kitchen [Level 3]	11-Aug-21	24-Jun-21	10	10										
WED-7111	Electrical Fixtures / Devices / Truss - Area H Kitchen [Level 3]	10-Aug-21	01-Sep-21	5	5										
WED-7113	Fire Alarm Truss - Area H Kitchen [Level 3]	10-Aug-21	01-Sep-21	5	5										

Balfour Beatty



Remaining Level of Effort Remaining Work
Actual Level of Effort Global Remaining Work
Actual Work Milestone

BCCCH - Electrical 2021 Work

Date: 20-Dec-20
Print Date: 09-Dec-20 17:22

Activity ID	Activity Name	Start	Finish	Est. Dur.	Plan	2021	2022
		Jan	Feb	Mar	Apr	May	Jun
WE-1284	Set Emergency Generator	05-Jan-21	05-Jun-21	1			
WE-1285	Emergency Generator Day Loads / All Floor Mounted Elect. Equip - Generator Room	05-Jan-21	26-Jun-21	11			
WE-1245	Install Overhead Supports / Hangers (MEP) - Generator Room	12-Jan-21	18-Jun-21	5			
WE-1245	Electrical Rough / Equipment Termination - Generator Room	29-Jan-21	18-Feb-21	11			
WE-1515	Pull / Terminate MV Cable - Generator Room	02-Mar-21	14-Jun-21	14			
WE-1291	Install Gen Shields & Disconnect - Generator Room	04-Mar-21	17-Jun-21	14			
WE-1523	Install Mufflers & Pipe - Generator Room	11-Mar-21	14-Jun-21	11			
WE-1533	Install Mufflers & Piping - Generator Room	16-Mar-21	05-Apr-21	11			
WE-1541	Control Wiring - Generator Room	16-Mar-21	15-Apr-21	20			
WE-1890	Overhead Fire Alarm Trunk / Devices - Generator Room	16-Mar-21	22-May-21	5			
WE-1573	Lighting / Electrical Trunk - Generator Room	16-Mar-21	24-May-21	5			
WE-1565	Fuel Oil Piping - Generator Room	02-Apr-21	23-Apr-21	11			
WE-1583	Batteries / Battery Chargers - Generator Room	13-Apr-21	19-Apr-21	5			
WE-1595	Test Fuel Oil Piping - Generator Room	23-Apr-21	29-Apr-21	5			
Switchgear Room (A&B) (A&B) (A&B)							
WE-1435	Install Overhead Supports / Hangers (MEP) - Switchgear Room	19-Jan-21	25-Jun-21	5			
WE-1435	Set MV Gear - Switchgear Room	02-Feb-21	08-Feb-21	5			
WE-1465	Set Parallel Bus & AIS - Switchgear Room	02-Feb-21	08-Feb-21	5			
WE-1475	Set Substation 1500V(L) / 2500V(L) / 2500V(L) - Switchgear Room	02-Feb-21	08-Feb-21	5			
WE-1485	Set all 480V Distribution Equipment - Switchgear Room	02-Feb-21	08-Feb-21	5			
WE-1496	Do up Clear - Switchgear Room	08-Feb-21	27-Feb-21	14			
WE-1501	Install Conduit (Ceiling of 2nd Floor) MV Gear to AIS Substations - Switchgear Room	24-Feb-21	01-Mar-21	10			
WE-1515	Pull / Terminate MV Cable - Switchgear Room	24-Feb-21	01-Mar-21	5			
WE-1521	Install in Room Conduit - Switchgear Room	24-Feb-21	08-Mar-21	13			
WE-1533	Pull / Terminate LV Cable - Switchgear Room	09-Mar-21	13-Mar-21	5			
WE-1555	Lighting / Electrical Trunk - Switchgear Room	09-Mar-21	14-Mar-21	5			
WE-1790	Overhead Fire Alarm Trunk / Devices - Switchgear Room	09-Mar-21	15-Mar-21	5			
WE-1543	Control Conduit & Wiring - Switchgear Room	16-Mar-21	01-Apr-21	13			
WE-1565	Breaker Testing - Switchgear Room	06-Apr-21	19-Apr-21	13			
WE-1777	Critical Systems Pre-Power Inspections - Switchgear Room	07-Mar-21	13-May-21	5			
WE-1779	Pre-maint Power - Switchgear Room	13-May-21	6				
Chiller Room							
WE-1759	Install Overhead Supports / Hangers (MEP) - Chiller Room	20-Jan-21	24-Jun-21	5			
WE-1515	BMS Rough-in - Chiller Room	15-Apr-21	26-Apr-21	13			
WE-1573	Lighting / Electrical Trunk - Chiller Room	15-Apr-21	01-May-21	15			
WE-1840	Fire Alarm Trunk / Devices - Chiller Room	03-May-21	13-May-21	10			
T-1 / Commissioning							
WE-1491	Start-up Fire Pump - Fire Pump	19-Apr-21	23-Apr-21	5			
WE-1499	Test / Inspect Fire Flows - Fire Pump	26-Apr-21	10-Apr-21	5			
WE-1581	Factory Start-up - Generator Room	10-Apr-21	06-May-21	5			



Remaining Level of Effort
 Actual Level of Effort
 Actual Work
 Remaining Work
 Critical Remaining Work
 Milestone

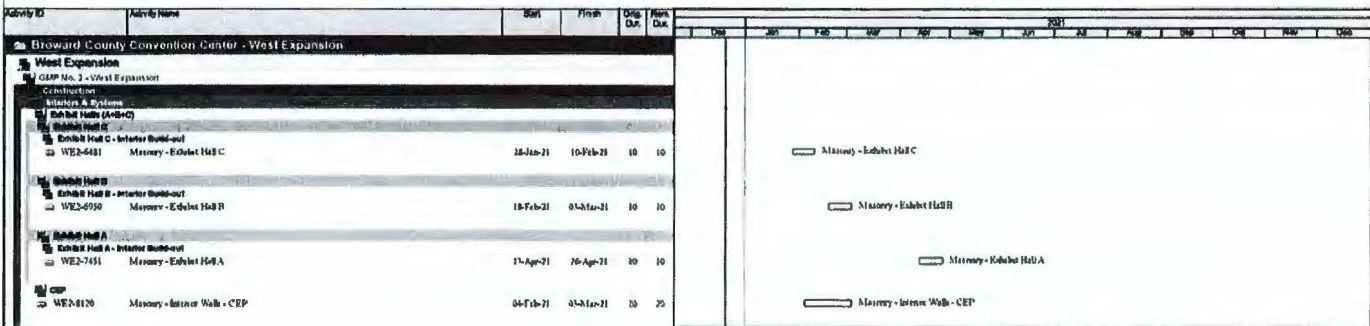
BCCCH - Electrical 2021 Work

Date Date 20-Dec-20
Print Date 09-Dec-20 17:22

Activity ID	Activity Name	Start	Finish	Orig. Dur.	Rem. Dur.	2021
						Dec Jan Feb Mar Apr May Jun Jul Aug Sep Oct Nov Dec
WED-7481	Load Bank Testing	01-May-21	20-May-21	10	10	Load Bank Testing
WED-7485	Paralleling Over - Generator Room	21-May-21	04-Jun-21	10	10	Paralleling Over - Generator Room
WED-7487	Verify Emergency Panel Currency - Generator	07-Jun-21	07-Jul-21	20	20	Verify Emergency Panel Currency - Generator
WED-7489	Final Checkmate ATS - Generator	06-Jul-21	13-Jul-21	5	5	Final Checkmate ATS - Generator
WED-8320	Final Test & Balance	08-Jul-21	10-Sep-21	60	60	Final Test & Balance
WED-8360	Fire Alarm Testing	12-Jul-21	01-Sep-21	40	40	Fire Alarm Testing
WED-8600	Damage Testing	14-Jul-21	07-Sep-21	40	40	Damage Testing
WED-7491	Loss of Power Testing - Generator	13-Jul-21	02-Aug-21	15	15	Loss of Power Testing - Generator
WED-7501	Test Smoke Control Fans / Dampers Existing Convention Center	13-Jul-21	09-Aug-21	20	20	Test Smoke Control Fans / Dampers Existing Convention Center
WED-7501	Test / Inspect On Loss of Power - Fire Pump	27-Jul-21	02-Aug-21	5	5	Test / Inspect On Loss of Power - Fire Pump
WED-7691	Final Emergency Power Inspections	01-Aug-21	23-Aug-21	15	15	Final Emergency Power Inspections
WED-7697	Test / Inspect Fire Sprinkler Flow & Tamper Switches	01-Aug-21	09-Aug-21	5	5	Test / Inspect Fire Sprinkler Flow & Tamper Switches
WED-8190	Test Smoke Control Fans / Dampers West Expansion	10-Aug-21	07-Sep-21	20	20	Test Smoke Control Fans / Dampers West Expansion
WED-7503	Final Fire Alarm Inspections	07-Sep-21	25-Sep-21	15	15	Final Fire Alarm Inspections
WED-7507	Program / Pre-Test Smoke Control Panel	14-Sep-21	04-Oct-21	15	15	Program / Pre-Test Smoke Control Panel
WED-7509	Smoke Control Special Inspection	05-Oct-21	11-Oct-21	5	5	Smoke Control Special Inspection

BCCCH - Masonry Remaining Work in 2021

Date Date: 20-Dec-20
Print Date: 09-Dec-20 14:20



Balfour Beatty



Page 1 of 1

Remaining Level of Effort
 Actual Level of Effort
 Actual Work
 Remaining Work
 Critical Remaining Work
 Milestone

BCCCH - Plumbing Remaining Work in 2021

Data Date: 20-Dec-20
Print Date: 09-Dec-20 14:32

Activity ID	Activity Name	Start	Finish	Orig. Dur.	Rem. Dur.	2021																			
						Dec	Jan	Feb	Mar	Apr	May	Jun	Jul	Aug	Sep	Oct	Nov	Dec							
Broward County Convention Center - West Expansion																									
West Expansion																									
Construction - West Exp.																									
Area A - Grid Lines WK, WL, WS																									
	WE2-7513	Shallow Underground Plumbing - Area A Grid Lines W19 - W13 / WK - WJ (Ground Level)	27-Jan-21	02-Feb-21	5	5																			
	WE2-7181	Deep Underground Plumbing - Area A Grid Lines W11 - W11 / WK - WJ (Ground Level)	11-Jan-21	18-Jan-21	7	7																			
	WE2-7201	Shallow Underground Plumbing - Area A Grid Lines W11 - W11 / WK - WJ (Ground Level)	27-Jan-21	02-Feb-21	5	5																			
Area B - Grid Lines WK, WL, WS																									
	WE2-7217	Shallow Underground Plumbing - Area B Grid Lines W11 - W10 / WK - WJ (Ground Level)	05-Feb-21	08-Feb-21	3	3																			
	WE2-7233	Shallow Underground Plumbing - Area B Grid Lines W10 - W9 / WK - WJ (Ground Level)	05-Feb-21	08-Feb-21	3	3																			
Area C - Grid Lines WK, WL, WS																									
	WE2-7255	Deep Underground Plumbing - Area B Grid Lines W9 - W8 / WK - WJ (Ground Level)	07-Jan-21	12-Jan-21	5	5																			
	WE2-7249	Shallow Underground Plumbing - Area B Grid Lines W9 - W9 / WK - WJ (Ground Level)	05-Feb-21	08-Feb-21	3	3																			
Area D - Grid Lines WK, WL, WS																									
	WE2-7265	Shallow Underground Plumbing - Area C Grid Lines W16 - W16 / WK - WJ (Ground Level)	10-Feb-21	10-Feb-21	1	1																			
	WE2-7281	Shallow Underground Plumbing - Area C Grid Lines W16 - W16 / WK - WJ (Ground Level)	10-Feb-21	10-Feb-21	1	1																			
	WE2-7297	Shallow Underground Plumbing - Area C Grid Lines W16 - W16 / WK - WJ (Ground Level)	10-Feb-21	10-Feb-21	1	1																			
Area E - Grid Lines WK, WL, WS																									
	WE2-7113	Shallow Underground Plumbing - Area D Grid Lines W1 - W1 / WK - WJ (Ground Level)	17-Feb-21	23-Feb-21	5	5																			
	WE2-7329	Shallow Underground Plumbing - Area D Grid Lines W4 - W2 / WK - WJ (Ground Level)	17-Feb-21	23-Feb-21	5	5																			
	WE2-14159	Form Deck - Area D Grid Lines W1 - W2 / Roof	23-Feb-21	23-Feb-21	1	1																			
Area F - Grid Lines WK, WL, WS																									
	WE2-10141	Metal Deck Plumbing Rough-in - Area F Grid Lines W10 - W9 (Level 1)	07-Jan-21	14-Jan-21	6	6																			

Remaining Level of Effort
 Remaining Work
 Actual Level of Effort
 Actual Work
 Critical Remaining Work
◆ Milestone



BCCCH - Plumbing Remaining Work in 2021

Date Date 20-Dec-20
Print Date 09-Dec-20 14:32

Activity ID	Activity Name	Est.	Finish	Org. Dur.	Plan Dur.	2021														
						Jan	Feb	Mar	Apr	May	Jun	Jul	Aug	Sep	Oct	Nov	Dec			
WE2-48521	Metal Deck Plumbing Rough-in - Area G Grid Line W6 - W8 [Level 3]	18-Jan-21	25-Jan-21	6	6															
WE2-48541	Metal Deck Plumbing Rough-in - Area G Grid Line W8 - W8 [Level 3]	29-Jan-21	05-Feb-21	6	6															
WE2-48601	Metal Deck Plumbing Rough-in - Area G Grid Line W6 - W3 [Level 3]	12-Feb-21	18-Feb-21	6	6															
WE2-48641	Metal Deck Plumbing Rough-in - Area H Grid Line W3 - W4 [Level 3]	01-Mar-21	08-Mar-21	6	6															
WE2-48811	Metal Deck Plumbing Rough-in - Area H Grid Line W4 - W2 B [Level 3]	19-Mar-21	17-Apr-21	6	6															
WE2-48531	Metal Deck Plumbing Rough-in - Long Span Area D Grid Line W1 - W4 [Level 3 / Roof]	09-Mar-21	16-Mar-21	6	6															
WE2-48651	Metal Deck Plumbing Rough-in - Long Span Area D Grid Line W4 - W2 B [Level 3]	26-Apr-21	03-May-21	6	6															
Exhibit Halls (A+B+C)																				
WE2-6151	Underground Plumbing Rough-in - Exhibit Hall C	22-Apr-21	28-Apr-21	5	4															
WE2-6490	Overhead Plumbing - Exhibit Hall C	26-Jun-21	03-Jul-21	23	23															
WE2-6183	MEPP Insulation - Exhibit Hall C	27-Sep-21	17-Jan-22	13	13															
Men's Restrooms (A+B)																				
WE2-13160	Plumbing Rough-in - Men's Restroom 1A07 [Level 1]	04-Mar-21	17-Mar-21	10	10															
WE2-13490	Plumbing Fixtures - Men's Restroom 1A07 [Level 1]	27-Mar-21	03-Jun-21	5	5															
Women's Restrooms (A+B)																				
WE2-13181	Underground Plumbing Rough-in - Exhibit Hall B	17-Sep-21	19-Mar-22	5	5															
WE2-6090	Overhead Plumbing - Exhibit Hall B	19-Feb-21	26-Mar-21	25	25															
WE2-7020	Plumbing @ Floor Level - Exhibit Hall B	19-Jun-21	01-Jul-21	10	10															
WE2-7040	MEPP Insulation - Exhibit Hall B	19-Jun-21	09-Sep-21	15	15															
Men's Restrooms (B+C)																				
WE2-12110	Plumbing Rough-in - Women Restroom 1B01 [Level 1]	25-Mar-21	07-Apr-21	10	10															
WE2-12210	Plumbing Fixtures - Women Restroom 1B01 [Level 1]	16-Jun-21	24-Jun-21	5	5															
Men's Restrooms (C)																				
WE2-12460	Plumbing Rough-in - Men's Restroom 1B07 [Level 1]	06-Apr-21	19-Apr-21	10	10															
WE2-12150	Plumbing Fixtures - Men's Restroom 1B07 [Level 1]	30-Jun-21	07-Jul-21	5	5															
Women's Restrooms (B+C)																				
WE2-12760	Plumbing Rough-in - Women Restroom 1B08 [Level 1]	13-Apr-21	26-Apr-21	10	10															

<input type="checkbox"/> Metal Deck Plumbing Rough-in - Area G Grid Line W6 - W8 [Level 3]
<input type="checkbox"/> Metal Deck Plumbing Rough-in - Area G Grid Line W8 - W8 [Level 3]
<input type="checkbox"/> Metal Deck Plumbing Rough-in - Area G Grid Line W6 - W3 [Level 3]
<input type="checkbox"/> Metal Deck Plumbing Rough-in - Area H Grid Line W3 - W4 [Level 3]
<input type="checkbox"/> Metal Deck Plumbing Rough-in - Area H Grid Line W4 - W2 B [Level 3]
<input type="checkbox"/> Metal Deck Plumbing Rough-in - Long Span Area D Grid Line W1 - W4 [Level 3 / Roof]
<input type="checkbox"/> Metal Deck Plumbing Rough-in - Long Span Area D Grid Line W4 - W2 B [Level 3]
<input type="checkbox"/> Underground Plumbing Rough-in - Exhibit Hall C
<input type="checkbox"/> Overhead Plumbing - Exhibit Hall C
<input type="checkbox"/> MEPP Insulation - Exhibit Hall C
<input type="checkbox"/> Plumbing Rough-in - Men's Restroom 1A07 [Level 1]
<input type="checkbox"/> Plumbing Fixtures - Men's Restroom 1A07 [Level 1]
<input type="checkbox"/> Underground Plumbing Rough-in - Exhibit Hall B
<input type="checkbox"/> Overhead Plumbing - Exhibit Hall B
<input type="checkbox"/> Plumbing @ Floor Level - Exhibit Hall B
<input type="checkbox"/> MEPP Insulation - Exhibit Hall B
<input type="checkbox"/> Plumbing Rough-in - Women Restroom 1B01 [Level 1]
<input type="checkbox"/> Plumbing Fixtures - Women Restroom 1B01 [Level 1]
<input type="checkbox"/> Plumbing Rough-in - Men's Restroom 1B07 [Level 1]
<input type="checkbox"/> Plumbing Fixtures - Men's Restroom 1B07 [Level 1]
<input type="checkbox"/> Plumbing Rough-in - Women Restroom 1B08 [Level 1]

Balfour Beatty



	Remaining Level of Effort		Remaining Work
	Actual Level of Effort		Critical Remaining Work
	Actual Work		Milestone

BCCCH - Plumbing Remaining Work in 2021

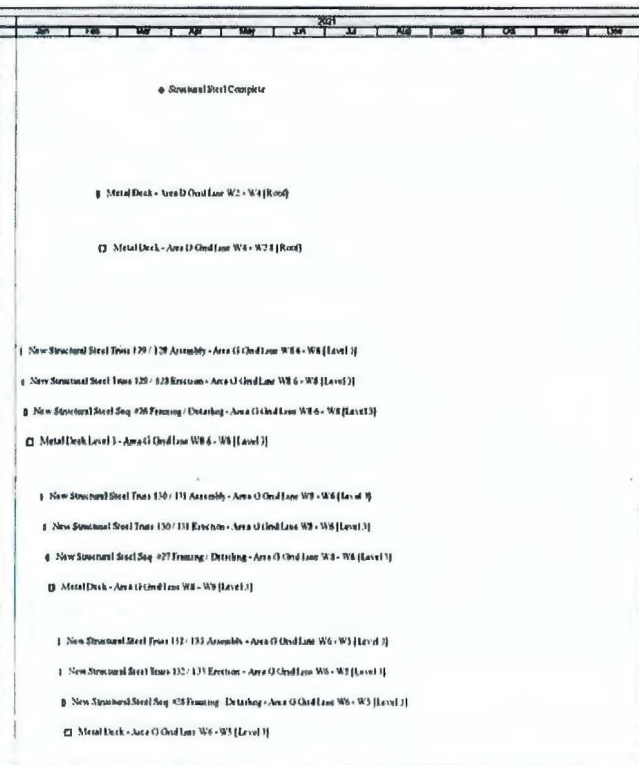
Date Date 20-Dec-20
Print Date 09-Dec-20 14:32

Activity ID	Activity Name	Start	Finish	Orig. Dur.	Rem. Dur.	2021													
						Jan	Feb	Mar	Apr	May	Jun	Jul	Aug	Sep	Oct	Nov	Dec		
WE2-12890	Plumbing Fixtures - Womens Restroom 1B04 [Level 1]	08-Jul-21	14-Jul-21	5	5														
Exhibit Hall A - Underground & SOG																			
WE2-7401	Underground Plumbing Rough-ins - Exhibit Hall A	04-Nov-21	10-Nov-21	5	5														
Exhibit Hall A - Interior Build-out																			
WE2-7433	Overhead Plumbing - Exhibit Hall A	13-Apr-21	17-May-21	24	25														
WE2-7435	Plumbing @ Floor Boxes - Exhibit Hall A	12-Jul-21	27-Jul-21	10	10														
WE2-7439	MEFP Insulation - Exhibit Hall A	12-Jul-21	30-Jul-21	15	15														
Womens Restroom 1C09																			
WE2-11660	Plumbing Rough-ins - Womens Restroom 1C09 [Level 1]	07-Sep-21	20-May-21	10	10														
WE2-13190	Plumbing Fixtures - Womens Restroom 1C09 [Level 1]	28-Jul-21	06-Aug-21	5	5														
Men's Restroom 1D01																			
WE2-11660	Plumbing Rough-ins - Men's Restroom 1D01 [Level 1]	13-May-21	25-May-21	10	10														
WE2-11700	Plumbing Fixtures - Men's Restroom 1D01 [Level 1]	06-Aug-21	15-Aug-21	5	5														
Kitchen																			
Level B																			
Area E - Kitchen																			
WE2-4921	Plumbing Rough-ins - Area E Kitchen [Level 1]	09-Feb-21	22-Feb-21	10	10														
WE2-4091	Plumbing Fixtures - Area E Kitchen [Level 1]	20-May-21	26-May-21	5	5														
Area H - Kitchen																			
WE2-4991	Plumbing Rough-ins - Area H Kitchen [Level 1]	25-Apr-21	10-May-21	10	10														
WE2-711	Plumbing Fixtures - Area H Kitchen [Level 1]	06-Aug-21	11-Aug-21	5	5														
CSP																			
WE2-5615	Set / Pipe Air Compression System - Charter Room	09-Mar-21	23-Mar-21	14	15														

BCCCH - Structural Steel Remaining Work in 2021

Date Date 20-Dec-20
Print Date 09-Dec-20 14:17

Activity ID	Activity Name	Start	Finish	Orig. Est.	Rev. Est.	2021	2022	2023	2024	2025	2026	2027	2028	2029	2030
Howard County Convention Center - West Expansion															
West Expansion Construction Milestones															
PH-000	Structural Steel Complete	20-Feb-21	0	0	0										
OMP No. 2 - West Expansion															
Construction - West of West															
Area D - Grid Lines W6, W4, W2															
WE2-1094	Metal Deck - Area D Grid Line W2 - W4 (Roof)	17-Feb-21	18-Feb-21	2	2										
WE2-1416	Metal Deck - Area D Grid Line W4 - W2 (Roof)	19-Feb-21	22-Feb-21	2	2										
Construction															
Area G - Grid Lines W6 - W3															
WE2-1447	New Structural Steel Truss 129 / 128 Assembly - Area G Grid Line W6 - W3 [Level 3]	04-Jan-21	05-Jan-21	1	1										
WE2-1449	New Structural Steel Truss 129 / 128 Erection - Area G Grid Line W6 - W3 [Level 3]	05-Jan-21	05-Jan-21	1	1										
WE2-1450	New Structural Steel Truss 129 / 128 Erection - Area G Grid Line W6 - W3 [Level 3]	06-Jan-21	07-Jan-21	2	2										
WE2-1451	Metal Deck Level 3 - Area G Grid Line W6 - W3 [Level 3]	08-Jan-21	11-Jan-21	3	3										
Area H - Grid Lines W6 - W3															
WE2-1452	New Structural Steel Truss 130 / 131 Assembly - Area G Grid Line W6 - W3 [Level 3]	16-Jan-21	16-Jan-21	1	1										
WE2-1453	New Structural Steel Truss 130 / 131 Erection - Area G Grid Line W6 - W3 [Level 3]	18-Jan-21	18-Jan-21	1	1										
WE2-1454	New Structural Steel Truss 130 / 131 Erection - Area G Grid Line W6 - W3 [Level 3]	19-Jan-21	20-Jan-21	2	2										
WE2-1455	Metal Deck - Area G Grid Line W6 - W3 [Level 3]	21-Jan-21	23-Jan-21	3	3										
Area I - Grid Lines W6 - W3															
WE2-1456	New Structural Steel Truss 132 / 133 Assembly - Area G Grid Line W6 - W3 [Level 3]	26-Jan-21	26-Jan-21	1	1										
WE2-1457	New Structural Steel Truss 132 / 133 Erection - Area G Grid Line W6 - W3 [Level 3]	27-Jan-21	27-Jan-21	1	1										
WE2-1458	New Structural Steel Truss 132 / 133 Erection - Area G Grid Line W6 - W3 [Level 3]	28-Jan-21	29-Jan-21	2	2										
WE2-1459	Metal Deck - Area G Grid Line W6 - W3 [Level 3]	30-Jan-21	02-Feb-21	3	3										



Balfour Beatty



Remaining Level of Effort
Actual Level of Effort
Actual Work
Remaining Work
Critical Remaining Work
Milestone

BCCCH - Structural Steel Remaining Work in 2021

Date: 26-Dec-20
Print Date: 09-Dec-20 14:17

Activity ID	Activity Name	Start	Finish	Org. Dur.	Plan Dur.	2021														
						Dec	Jan	Feb	Mar	Apr	May	Jun	Jul	Aug	Sep	Oct	Nov	Dec		
WE2-1490	New Structural Steel Seq #29 Framing / Detailing - Area G Grid Lane W6 - W3 [Roof]	16-Jan-21	01-Feb-21	2	2	<input type="checkbox"/>	<input type="checkbox"/>	<input type="checkbox"/>	<input type="checkbox"/>	<input type="checkbox"/>	<input type="checkbox"/>	<input type="checkbox"/>	<input type="checkbox"/>	<input type="checkbox"/>	<input type="checkbox"/>	<input type="checkbox"/>	<input type="checkbox"/>	<input type="checkbox"/>	<input type="checkbox"/>	<input type="checkbox"/>
WE2-1491	Metal Deck - Area G Grid Lane W6 - W3 [Roof]	03-Feb-21	05-Feb-21	1	1	<input type="checkbox"/>	<input type="checkbox"/>	<input type="checkbox"/>	<input type="checkbox"/>	<input type="checkbox"/>	<input type="checkbox"/>	<input type="checkbox"/>	<input type="checkbox"/>	<input type="checkbox"/>	<input type="checkbox"/>	<input type="checkbox"/>	<input type="checkbox"/>	<input type="checkbox"/>	<input type="checkbox"/>	<input type="checkbox"/>
Area H - W4 - W3																				
WE2-1470	New Structural Steel Truss 134 / 135 Assembly - Area H Grid Lane W3 - W4 [Level 3]	11-Feb-21	11-Feb-21	1	1	<input type="checkbox"/>	<input type="checkbox"/>	<input type="checkbox"/>	<input type="checkbox"/>	<input type="checkbox"/>	<input type="checkbox"/>	<input type="checkbox"/>	<input type="checkbox"/>	<input type="checkbox"/>	<input type="checkbox"/>	<input type="checkbox"/>	<input type="checkbox"/>	<input type="checkbox"/>	<input type="checkbox"/>	<input type="checkbox"/>
WE2-1471	New Structural Steel Truss 134 / 135 Erection - Area H Grid Lane W3 - W4 [Level 3]	12-Feb-21	12-Feb-21	1	1	<input type="checkbox"/>	<input type="checkbox"/>	<input type="checkbox"/>	<input type="checkbox"/>	<input type="checkbox"/>	<input type="checkbox"/>	<input type="checkbox"/>	<input type="checkbox"/>	<input type="checkbox"/>	<input type="checkbox"/>	<input type="checkbox"/>	<input type="checkbox"/>	<input type="checkbox"/>	<input type="checkbox"/>	<input type="checkbox"/>
WE2-1466	New Structural Steel Seq #10 Framing / Detailing - Area H Grid Lane W3 - W4 [Level 3]	15-Feb-21	15-Feb-21	2	2	<input type="checkbox"/>	<input type="checkbox"/>	<input type="checkbox"/>	<input type="checkbox"/>	<input type="checkbox"/>	<input type="checkbox"/>	<input type="checkbox"/>	<input type="checkbox"/>	<input type="checkbox"/>	<input type="checkbox"/>	<input type="checkbox"/>	<input type="checkbox"/>	<input type="checkbox"/>	<input type="checkbox"/>	<input type="checkbox"/>
WE2-1467	Metal Deck - Area H Grid Lane W3 - W4 [Level 3]	16-Feb-21	16-Feb-21	1	1	<input type="checkbox"/>	<input type="checkbox"/>	<input type="checkbox"/>	<input type="checkbox"/>	<input type="checkbox"/>	<input type="checkbox"/>	<input type="checkbox"/>	<input type="checkbox"/>	<input type="checkbox"/>	<input type="checkbox"/>	<input type="checkbox"/>	<input type="checkbox"/>	<input type="checkbox"/>	<input type="checkbox"/>	<input type="checkbox"/>
Area I - W5 - W4																				
WE2-1469	New Structural Steel Seq #21 Framing / Detailing - Area I Grid Lane W5 - W4 [Roof]	16-Feb-21	15-Feb-21	2	2	<input type="checkbox"/>	<input type="checkbox"/>	<input type="checkbox"/>	<input type="checkbox"/>	<input type="checkbox"/>	<input type="checkbox"/>	<input type="checkbox"/>	<input type="checkbox"/>	<input type="checkbox"/>	<input type="checkbox"/>	<input type="checkbox"/>	<input type="checkbox"/>	<input type="checkbox"/>	<input type="checkbox"/>	<input type="checkbox"/>
WE2-1441	Metal Deck - Area I Grid Lane W5 - W4 [Roof]	18-Feb-21	23-Feb-21	1	1	<input type="checkbox"/>	<input type="checkbox"/>	<input type="checkbox"/>	<input type="checkbox"/>	<input type="checkbox"/>	<input type="checkbox"/>	<input type="checkbox"/>	<input type="checkbox"/>	<input type="checkbox"/>	<input type="checkbox"/>	<input type="checkbox"/>	<input type="checkbox"/>	<input type="checkbox"/>	<input type="checkbox"/>	<input type="checkbox"/>
Area J - W6 - W5																				
WE2-1476	New Structural Steel Truss 136 / 137 Assembly - Area H Grid Lane W4 - W5 [Level 3]	20-Feb-21	20-Feb-21	1	1	<input type="checkbox"/>	<input type="checkbox"/>	<input type="checkbox"/>	<input type="checkbox"/>	<input type="checkbox"/>	<input type="checkbox"/>	<input type="checkbox"/>	<input type="checkbox"/>	<input type="checkbox"/>	<input type="checkbox"/>	<input type="checkbox"/>	<input type="checkbox"/>	<input type="checkbox"/>	<input type="checkbox"/>	<input type="checkbox"/>
WE2-1476	New Structural Steel Truss 136 / 137 Erection - Area H Grid Lane W4 - W5 [Level 3]	22-Feb-21	22-Feb-21	1	1	<input type="checkbox"/>	<input type="checkbox"/>	<input type="checkbox"/>	<input type="checkbox"/>	<input type="checkbox"/>	<input type="checkbox"/>	<input type="checkbox"/>	<input type="checkbox"/>	<input type="checkbox"/>	<input type="checkbox"/>	<input type="checkbox"/>	<input type="checkbox"/>	<input type="checkbox"/>	<input type="checkbox"/>	<input type="checkbox"/>
WE2-1479	New Structural Steel Seq #22 Framing / Detailing - Area H Grid Lane W4 - W5 [Level 3]	24-Feb-21	24-Feb-21	2	2	<input type="checkbox"/>	<input type="checkbox"/>	<input type="checkbox"/>	<input type="checkbox"/>	<input type="checkbox"/>	<input type="checkbox"/>	<input type="checkbox"/>	<input type="checkbox"/>	<input type="checkbox"/>	<input type="checkbox"/>	<input type="checkbox"/>	<input type="checkbox"/>	<input type="checkbox"/>	<input type="checkbox"/>	<input type="checkbox"/>
WE2-1484	Metal Deck - Area H Grid Lane W4 - W5 [Level 3]	25-Feb-21	25-Feb-21	1	1	<input type="checkbox"/>	<input type="checkbox"/>	<input type="checkbox"/>	<input type="checkbox"/>	<input type="checkbox"/>	<input type="checkbox"/>	<input type="checkbox"/>	<input type="checkbox"/>	<input type="checkbox"/>	<input type="checkbox"/>	<input type="checkbox"/>	<input type="checkbox"/>	<input type="checkbox"/>	<input type="checkbox"/>	<input type="checkbox"/>
Area K - W7 - W6																				
WE2-1472	New Structural Steel Seq #33 Framing / Detailing - Area K Grid Lane W4 - W6 [Roof]	24-Feb-21	26-Feb-21	2	2	<input type="checkbox"/>	<input type="checkbox"/>	<input type="checkbox"/>	<input type="checkbox"/>	<input type="checkbox"/>	<input type="checkbox"/>	<input type="checkbox"/>	<input type="checkbox"/>	<input type="checkbox"/>	<input type="checkbox"/>	<input type="checkbox"/>	<input type="checkbox"/>	<input type="checkbox"/>	<input type="checkbox"/>	<input type="checkbox"/>
WE2-1449	Metal Deck - Area H Grid Lane W4 - W6 [Roof]	01-Mar-21	02-Mar-21	1	1	<input type="checkbox"/>	<input type="checkbox"/>	<input type="checkbox"/>	<input type="checkbox"/>	<input type="checkbox"/>	<input type="checkbox"/>	<input type="checkbox"/>	<input type="checkbox"/>	<input type="checkbox"/>	<input type="checkbox"/>	<input type="checkbox"/>	<input type="checkbox"/>	<input type="checkbox"/>	<input type="checkbox"/>	<input type="checkbox"/>
Area L - Long Span																				
Area M - W11 - W10																				
WE2-1432	Encase Col WH W115 - Long Span Area B Grid Lane W11 - W10 [Level 3] - Roof	05-Jan-21	11-Jan-21	5	5	<input type="checkbox"/>	<input type="checkbox"/>	<input type="checkbox"/>	<input type="checkbox"/>	<input type="checkbox"/>	<input type="checkbox"/>	<input type="checkbox"/>	<input type="checkbox"/>	<input type="checkbox"/>	<input type="checkbox"/>	<input type="checkbox"/>	<input type="checkbox"/>	<input type="checkbox"/>	<input type="checkbox"/>	<input type="checkbox"/>
WE2-1471	Encase Col WH W112 - Long Span Area B Grid Lane W11 - W10 [Level 3] - Roof	12-Jan-21	19-Jan-21	5	5	<input type="checkbox"/>	<input type="checkbox"/>	<input type="checkbox"/>	<input type="checkbox"/>	<input type="checkbox"/>	<input type="checkbox"/>	<input type="checkbox"/>	<input type="checkbox"/>	<input type="checkbox"/>	<input type="checkbox"/>	<input type="checkbox"/>	<input type="checkbox"/>	<input type="checkbox"/>	<input type="checkbox"/>	<input type="checkbox"/>
WE2-1460	Metal Deck - Long Span Area B Grid Lane W11 - W10 [Level 3] - Roof	19-Jan-21	25-Jan-21	5	5	<input type="checkbox"/>	<input type="checkbox"/>	<input type="checkbox"/>	<input type="checkbox"/>	<input type="checkbox"/>	<input type="checkbox"/>	<input type="checkbox"/>	<input type="checkbox"/>	<input type="checkbox"/>	<input type="checkbox"/>	<input type="checkbox"/>	<input type="checkbox"/>	<input type="checkbox"/>	<input type="checkbox"/>	<input type="checkbox"/>
Area N - W10 - W9																				
WE2-1478	New Structural Steel Seq #31 Framing / Detailing - Long Span Area B Grid Lane W10 - W9 [Level 3] - Roof	04-Jan-21	06-Jan-21	1	1	<input type="checkbox"/>	<input type="checkbox"/>	<input type="checkbox"/>	<input type="checkbox"/>	<input type="checkbox"/>	<input type="checkbox"/>	<input type="checkbox"/>	<input type="checkbox"/>	<input type="checkbox"/>	<input type="checkbox"/>	<input type="checkbox"/>	<input type="checkbox"/>	<input type="checkbox"/>	<input type="checkbox"/>	<input type="checkbox"/>
WE2-1486	Metal Deck - Long Span Area B Grid Lane W10 - W9 [Level 3] - Roof	07-Jan-21	13-Jan-21	5	5	<input type="checkbox"/>	<input type="checkbox"/>	<input type="checkbox"/>	<input type="checkbox"/>	<input type="checkbox"/>	<input type="checkbox"/>	<input type="checkbox"/>	<input type="checkbox"/>	<input type="checkbox"/>	<input type="checkbox"/>	<input type="checkbox"/>	<input type="checkbox"/>	<input type="checkbox"/>	<input type="checkbox"/>	<input type="checkbox"/>



Remaining Level of Effort Remaining Work
Actual Level of Effort Critical Remaining Work
Actual Work Milestone

BCCCH - Structural Steel Remaining Work in 2021

Date Date 20-Dec-20
Print Date 09-Dec-20 14:17

Activity ID	Activity Name	Start	Finish	Orig. Dur.	Plan. Dur.	2021											
						Jan	Feb	Mar	Apr	May	Jun	Jul	Aug	Sep	Oct	Nov	Dec
Area C - W6 - W8																	
WE2-4611	New Structural Steel Truss 108-2/108-3/158 - 161 Assembly - Long Span Area C Grid Lines W6-6 - W8 (Level 3 / Roof)	04-Jan-21	04-Jan-21	5	5												
WE2-4613	New Structural Steel Truss 108-2/108-3/161 Erection - Long Span Area C Grid Lines W6-6 - W8 (Level 3 / Roof)	09-Jan-21	09-Jan-21	1	1												
WE2-4615	New Structural Steel Truss 158 - 160 Erection - Long Span Area C Grid Lines W6-6 - W8 (Level 3 / Roof)	11-Jan-21	11-Jan-21	1	1												
WE2-4620	New Structural Steel Seq #52 Framing - Long Span Area C Grid Lines W6-6 - W8 (Level 3 / Roof)	12-Jan-21	14-Jan-21	1	1												
WE2-4792	New Structural Steel Seq #53 Framing - Long Span Area C Grid Lines W6-6 - W8 (Level 3 / Roof)	15-Jan-21	19-Jan-21	1	1												
WE2-47151	Erector Col WH W18 - Long Span Area C Grid Lines W6-6 - W8 (Level 3 / Roof)	19-Jan-21	25-Jan-21	5	5												
WE2-4640	Metal Deck Roof - Long Span Area C Grid Lines W6-6 - W8 (Level 3 / Roof)	20-Jan-21	25-Jan-21	5	5												
WE2-47161	Erector Col WH W15 - Long Span Area C Grid Lines W6-6 - W8 (Level 3 / Roof)	26-Jan-21	01-Feb-21	5	6												
WE2-47171	Erector Col WH W12 - Long Span Area C Grid Lines W6-6 - W8 (Level 3 / Roof)	02-Feb-21	04-Feb-21	1	5												
Area C - W8 - W9																	
WE2-14467	New Structural Steel Truss 110-2/110-3/162 - 165 Assembly - Long Span Area C Grid Lines W8 - W9 (Level 3 / Roof)	15-Jan-21	20-Jan-21	5	5												
WE2-14469	New Structural Steel Truss 110-2/110-3/165 Erection - Long Span Area C Grid Lines W8 - W9 (Level 3 / Roof)	21-Jan-21	21-Jan-21	1	1												
WE2-14189	Structural Steel Seq #8 thru 14 & 26 thru 27 Visual Inspection	22-Jan-21	22-Jan-21	1	1												
WE2-14471	New Structural Steel Truss 162 - 164 Erection - Long Span Area C Grid Lines W8 - W9 (Level 3 / Roof)	22-Jan-21	22-Jan-21	1	1												
WE2-14500	New Structural Steel Seq #31 - Long Span Area C Grid Lines W8 - W9 (Level 3 / Roof)	25-Jan-21	26-Jan-21	1	1												
WE2-14791	New Structural Steel Seq #55 - Long Span Area C Grid Lines W8 - W9 (Level 3 / Roof)	27-Jan-21	29-Jan-21	3	3												
WE2-14291	Metal Deck - Long Span Area C Grid Lines W8 - W9 (Level 3 / Roof)	30-Jan-21	10-Feb-21	10	10												
Area C - W6 - W5																	
WE2-14565	New Structural Steel Truss 112-2/112-3/166 - 169 Assembly - Long Span Area C Grid Lines W6 - W5 (Level 3 / Roof)	27-Jan-21	01-Feb-21	5	5												
WE2-14463	New Structural Steel Truss 112-2/112-3/163 Erection - Long Span Area C Grid Lines W6 - W5 (Level 3 / Roof)	02-Feb-21	02-Feb-21	1	1												
WE2-14569	New Structural Steel Truss 113-2/113-3/169 Erection - Long Span Area C Grid Lines W6 - W5 (Level 3 / Roof)	02-Feb-21	02-Feb-21	1	1												
WE2-14571	New Structural Steel Truss 166 - 168 Erection - Long Span Area C Grid Lines W6 - W5 (Level 3 / Roof)	04-Feb-21	04-Feb-21	1	1												
WE2-14610	New Structural Steel Seq #56 Framing - Detaching - Long Span Area C Grid Lines W6 - W5 (Level 3 / Roof)	05-Feb-21	06-Feb-21	1	1												

Balfour Beatty



Page 3 of 5

Remaining Level of Effort Remaining Work
 Actual Level of Effort Critical Remaining Work
 Actual Work Milestone

BCCCH - Structural Steel Remaining Work in 2021

Date Date 20-Dec-20
Print Date 09-Dec-20 14:17

Activity ID	Activity Name	Start	Finish	Orig. Dur.	Plan Dur.	2021	2022										
						Jan	Feb	Mar	Apr	May	Jun	Jul	Aug	Sep	Oct	Nov	Dec
WE2-4781	New Structural Steel Seq #19 Framing / Detailing - Long Span Area C Grid Lines W5 - W3 (Level 1 / Roof)	09-Feb-21	11-Feb-21	3	3												
WE2-4251	Metal Deck Roof C - Long Span Area C Grid Lines W5 - W3 (Level 1 / Roof)	12-Feb-21	25-Feb-21	10	10												
WE - W6																	
WE2-4720	Erect Col WH W18 - Long Span Area D Grid Line W3 - W4 (Level 1 / Roof)	09-Feb-21	15-Feb-21	5	5												
WE2-1702	New Structural Steel Truss 115-2/3, 170 - 175 Assembly - Long Span Area D Grid Line W3 - W4 (Level 1 / Roof)	10-Feb-21	15-Feb-21	2	5												
WE2-4721	Erect Col WH W15 - Long Span Area D Grid Line W3 - W4 (Level 1 / Roof)	10-Feb-21	20-Feb-21	1	5												
WE2-4722	New Structural Steel Truss 115-2/3, 170 - 175 Erection - Long Span Area D Grid Line W3 - W4 (Level 1 / Roof)	10-Feb-21	16-Feb-21	1	1												
WE2-4723	New Structural Steel Truss 170 - 175 Erection - Long Span Area D Grid Line W3 - W4 (Level 1 / Roof)	17-Feb-21	17-Feb-21	1	1												
WE2-4760	New Structural Steel Seq #18 Framing / Detailing - Long Span Area D Grid Line W3 - W4 (Level 1 / Roof)	18-Feb-21	20-Feb-21	1	1												
WE2-4783	New Structural Steel Seq #19 Framing / Detailing - Long Span Area D Grid Line W3 - W4 (Level 1 / Roof)	20-Feb-21	26-Feb-21	1	1												
WE2-4722	Erect Col WH W12 - Long Span Area D Grid Line W3 - W4 (Level 1 / Roof)	21-Feb-21	01-Mar-21	5	5												
WE2-4740	Metal Deck - Long Span Area D Grid Line W3 - W4 (Level 1 / Roof)	25-Feb-21	02-Mar-21	5	5												
WE2-4721	Erect Col WH W15 - Long Span Area D Grid Line W3 - W4 (Level 1 / Roof)	02-Mar-21	08-Mar-21	5	1												
WE2-4741	Erect Col WH W12 - Long Span Area D Grid Line W3 - W4 (Level 1 / Roof)	05-Mar-21	13-Mar-21	5	1												
WE - W2																	
WE2-1314	New Structural Steel Truss 174 - 177 Assembly - Long Span Area D Grid Line W4 - W2 B (Level 1)	23-Feb-21	26-Feb-21	4	1												
WE2-1315	New Structural Steel Truss 174 - 177 Erection - Long Span Area D Grid Line W4 - W2 B (Level 1)	01-Mar-21	01-Mar-21	1	1												
WE2-4760	New Structural Steel Seq #60 Framing / Detailing - Long Span Area D Grid Line W4 - W2 B (Level 1)	02-Mar-21	09-Mar-21	5	1												
WE2-4767	New Structural Steel Seq #61 Framing / Detailing - Long Span Area D Grid Line W4 - W2 B (Level 1)	09-Mar-21	15-Mar-21	5	1												
WE2-4404	Metal Deck - Long Span Area D Grid Line W4 - W2 B (Level 1)	23-Mar-21	07-Apr-21	10	10												
WE - W1																	
WE2-1445	New Structural Steel Seq #62 Framing / Detailing - Long Span Area D Grid Line W4 - W2 B (Low Roof)	16-Mar-21	20-Mar-21	5	5												
WE2-1720	New Structural Steel Seq #63 Framing / Detailing - Long Span Area D Grid Line W4 - W2 B (Low Roof)	22-Mar-21	26-Mar-21	5	5												
WE2-7143	Structural Steel Seq 56 thru 61 & 26 thru 33 Visual Inspection	26-Mar-21	26-Mar-21	1	1												
WE2-4400	Metal Deck - Long Span Area D Grid Line W4 - W2 B (Low Roof)	08-Apr-21	19-Apr-21	10	10												



Remaining Level of Effort Remaining Work
 Actual Level of Effort Critical Remaining Work
 Actual Work Milestone

BCCCH - Structural Steel Remaining Work in 2021

Date Date 20-Dec-20
Print Date 09-Dec-20 14:17

Activity ID	Activity Name	Start	Finish	Org Dst	Item Dst	2021	2022												
						Dec	Jan	Feb	Mar	Apr	May	Jun	Jul	Aug	Sep	Oct	Nov	Dec	
New Loading Dock																			
Area A																			
WE-24821	Install Steel Columns - Area A New Loading Dock	12-Feb-21	15-Feb-21	2	1														
Capital Improvement																			
Existing Building NE Corner Stay Tower																			
General and Professional																			
Structural Steel																			
WE-29145	Structural Steel (Beams, Columns, & Steel Plates) - A/E Approval	13-Jan-21	26-Jan-21	10	10														
WE-29146	Structural Steel (Beams, Columns, & Steel Plates) - Fab & Deliv	27-Jan-21	20-Mar-21	40	40														
Construction																			
Structural Steel and Decking																			
WE-30218	Steel Decking and Columns	14-Mar-21	30-Apr-21	20	20														

UPDATED COVID-19 PLAN FOR BCCCH OFFICE AND FIELD

Date Modified: 12/10/2020

COVID Plan Captain: Lisa Falso

GUIDELINES FOR OFFICE

This plan is effective immediately for all Balfour Beatty employees working at the BCCCH project office located at 1799 SE 17th Street. Any employees with constraints such as childcare, family members with underlying conditions, etc. that are being affected by COVID-19 must contact John Parker to discuss any potential concerns.

The following is the guide moving forward for the foreseeable future:

Office Hygiene

Due to Covid-19 there will be a continued effort to improve the overall hygiene of the BCCCH office and the project site.

Balfour Beatty will perform office cleanings consistent, to the greatest degree possible, with the CDC guidelines: <https://www.cdc.gov/coronavirus/2019-ncov/community/organizations/cleaning-disinfection.html>

1. In addition to the CDC guidelines Balfour Beatty has employed a full-time cleaning person (Sharonda Neil) to sanitize all door handles, surfaces, desk, etc. Please accommodate Sharonda and thank her daily!
2. Wash your hands with soap and water or use hand sanitizer, especially after touching used items or surfaces. This must be done when you enter the building.
3. Avoid touching your face
4. Sneeze or cough into a tissue, or the inside of your elbow
5. Disinfect frequently used items and surfaces as much as possible
6. Continue using face coverings while in public, and particularly when using mass transit
7. Restrooms
 - a. Personnel are required to wear face covering when entering restrooms
 - b. All Employees and Guests must wash their hands when leaving the restroom
 - c. Waste cans will be no touch and will be located in and out of restrooms
 - d. Waste to be removed throughout the day
8. Restrict **COMMON AREAS** (Breakroom 2-person limit) to be used for heating up food, putting food in the fridge, and/or getting coffee/water/soda. There will be no consumption of food in the kitchen.

People Who Feel Sick Must Stay at Home

1. DO NOT GO TO WORK – contact your manager
2. If you go to the doctor please self-quarantine in accordance with the doctor's and/or CDC recommendations

12/10/20

Office Personnel - Social Distancing Requirements

- You must follow Social Distancing guidelines as outlined in the CDC.
- In order to Social Distance in the office please:
 - Do not enter another employee's office.
 - Stand outside door.
 - No more than 1 person in the hallway outside an office at a time.
- All employees will wear **PROTECTIVE** cloth face coverings/face mask when work requires less than 6 feet of separation and when walking through the office. This includes all public spaces.
- Personal accountability for cleaning and disinfecting high touch surfaces
 - Each employee will be provided a bottle of hand sanitizer at desk
 - Hand sanitizer will be located on each side of all doors
 - We will have trash cans on either side of all doors
 - Disinfectants will be available in each area of the office for your use
- We will be spacing all workstations in open areas to ensure 6' or more of separation
- For the foreseeable future we will be utilizing **TELEWORK**, Microsoft Team site, GoToMeetings for all project team meetings and for any meetings with 10 or more individuals (when meeting outside of the TELEWORK mask must be worn)
- Minimize **NON-ESSENTIAL** Travel. If you do have to travel, please advise your supervisor prior to travel.
- When transporting between the office and field make sure that you sanitize the vehicle and face coverings must be worn in accordance with CDC.
- **VISITORS should be discouraged from entering office, if required, individuals** must sign in and follow the same guidelines as written in this plan. All Visitors must schedule an appointment. No walk-ins allowed.
- Everyone is encouraged to bring their food and eat at their desk.

Logistics:

Reference attached plan. There is a dedicated access point exclusively for ingress/egress to/from the office to support social distancing as recommended by the CDC.

Please note that all doors are to remain locked and you must always carry your key card access with you at all times. We are installing an AI Phone at the reception desk glass door. This will allow Lisa to communicate with and control access at the glass door.

No guests are allowed in the building without prior communication with Lisa Falso.

NOTE ALL EMPLOYEES AND GUEST MUST BE SCANNED BY THE THERMAL IMAGING CAMERA LOCATED AT THE OFFICE LOBBY EVERY TIME THEY ENTER THE OFFICE. IF ANYONE IS SCANNED AND IDENTIFIED AS HAVING AN ABNORMAL TEMPERATURE (AS NOTED BY THE THERMAL IMAGING CAMERA) WILL BE ASKED TO LEAVE THE OFFICE AND NOT RETURN UNTIL THEY HAVE RECEIVED A RELEASE FROM A DOCTOR.

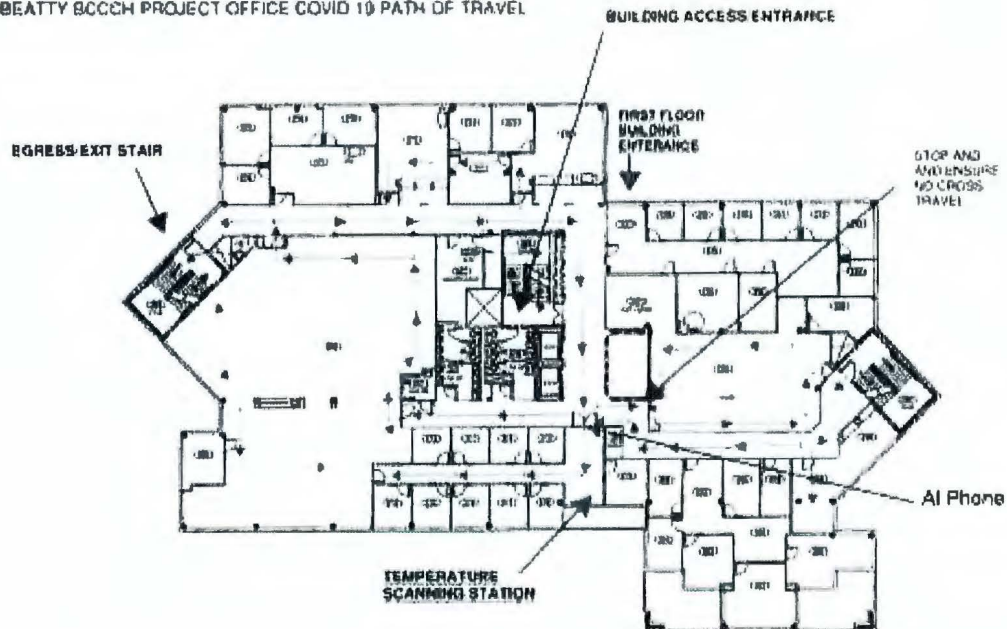
- We have taken into consideration corridors for one-way travel to minimize interaction with others. Foot traffic in the office shall be one way. See map below for routes and direction of travel. We will post signs to indicate direction of travel through the office.
- Stairwells are one-way, signage will be posted

12/10/20

- We are encouraging everyone to utilize the stairs if possible. If not, only one person per elevator

AS A BACKUP PLAN ALL EMPLOYEES NEED TO HAVE A WORKSTATION AT THE OFFICE AND THEIR HOME. BBC WILL PROVIDE MONITORS FOR YOUR OFFICE AT HOME IF NEEDED. ALL MONITORS MUST BE RETURNED TO BBC AFTER THE COVID 19 IS OVER.

SUITE 203A 1799 SE 17TH STREET, FORT LAUDERDALE 33316
BALFOUR BEATTY BCCCH PROJECT OFFICE COVID 19 PATH OF TRAVEL



GUIDELINES FOR FIELD

1. All team members must communicate the plan daily
2. Checks are completed at the gate, entrance to the work, during morning safety huddles and periodic checks through the work day.
3. Plan must be updated based on the progress of the work/change conditions.
4. Constant recommunication of the plan / plan updates

Items to check daily in the field:

1. Signage at the gates, fence and within the project limits showing social distancing
2. We have a person at each entrance that stops every person to visually inspect to ensure they are not showing any of the main signs of the COVID-19 (fatigue, cough, breathlessness, etc..) and to educate them in English and Spanish what social distancing is. If someone shows any signs of COVID-19 per the CDC they are not allowed to enter the site.
3. Ensure team members walk around all day making sure that everyone is staying 6' away. There are some instances where the individuals do to safety reason do have to be within 6' but limited to actual need. Subs are to identify who on the teams are working near each other to track should one of them become symptoms

12/10/20

8.8 COVID 19 Project Protocols

COVID-19 PLAN

4. Cleaning team members must clean all surfaces non-stop all day (toilets, tables, handles, gates, etc)
5. All morning meeting are to be handled separately to ensure there are no large groups of people in one area. The individual groups stay at least 6 feet away from each other.
6. Document daily with pictures to show the separation
7. The helicopter flies over once a day to take pictures of the site to verify social distancing is happening. Ensure we are reviewing the pictures for social distancing
8. All AHJ's have assigned parking to ensure there is separation around them and they have clear access to the site without interacting with the workers
9. If someone is identified to be sick/potentially sick we will immediately stop work in the area and disinfect the tools, equipment and area the worker was working. Anyone working near the worker will be asked to leave and self-quarantine and must provide a note from a doctor before they return.
10. Every subcontractor must have a COVID-19 plan and monitor their plan
11. Leadership must walk once a week with the prime subs to ensure we are working together to address any concerns
12. We have added a safety person to the site for another set of eyes and to ensure we are working safely
13. We have increased the servicing schedule of the port-o-lets and hand wash stations to daily
14. Lunch and break areas are set-up to adhere to the 6ft separation
15. Self-serve from lunch truck has been eliminated. Designated person distributes contents.



12/10/20

8.8 COVID 19 Project Protocols

COVID-19 PLAN

CAM # 21-0292
Exhibit 1
Page 54 of 69

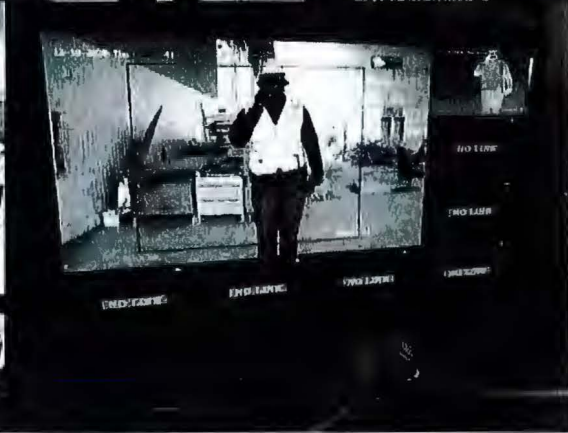
All Delivery Drivers Must Be Temperature Checked and Advised Of COVID-19 Protocols



All Workers Must Be Temperature Checked and Advised Of COVID-19 Protocols at the Site Gate and Building Entrance.



All Workers Must Be Temperature Checked Utilizing the Thermal Imaging Camera and Advised Of COVID-19 Protocols at the Building Entrance.



12/10/20

8.8 COVID 19 Project Protocols

COVID-19 PLAN

CAM # 21-0292
Exhibit 1
Page 55 of 69



December 17, 2020

Mr. Thomas Stedem
Senior Project Manager
Balfour Beatty
1799 SE 17th Street
Fort Lauderdale, Florida 33316

Re: Report of Noise Level Estimation – Additional Hours
Broward County Convention Center
1950 Eisenhower Boulevard
Fort Lauderdale, Florida
Project 16698
Proposal 20-0911

Dear Mr. Stedem:

NV5 Inc. submits this letter in fulfillment of the requested scope of service. NV5 has been providing Noise Monitoring Summary reports. This report provides a summary of the information collected since the previous report.

The project site is located at 1950 Eisenhower Boulevard. In October 2020, a monitoring unit was placed at the southeast corner of the building at 1799 SE 17th Street, Fort Lauderdale, FL.

Noise Monitoring starting in October, 2020 and is currently ongoing. This report addresses the information recorded from October 31, 2020 to December 15, 2020.

PURPOSE

The purpose of our services on this project were to: provide a review of noise levels that could be expected at adjacent condominium property line north of the convention center for construction at hours outside of those outlined within the City of Fort Lauderdale noise regulations.

NOISE MONITORING EQUIPMENT

NV5, in conjunction with Geosonics, provided noise monitoring equipment to the project. For this project a Re:mote Noise Level Meter operated at the southeast corner of the building at 1799 SE 17th Street, Fort Lauderdale, FL. Normally a noise limit is provided. We understand that a specific limit for noise was not provided for this project.

Remote Equipment

NV5 provided Re:mote Noise Level Meter monitoring equipment to the project. The monitoring units run daily providing the summary records that are transmitted and reported daily to an online site. The unit

transmits the data to us daily and we review the day's noise levels and cite the maximum value recorded each day.

The reports online summarize the noise levels a day at a time from the instrument location. They are histogram format or vertical bars of the vibration levels recorded during the day.

REVIEW OF NOISE MONITORING DATA

Based on the attached report, noise limits of the City of Ft. Lauderdale that are represented by 60 dBA during day time hours and 50 dBA during night time hours, can't be met due to the fact that the noise from the adjacent street and associated community produce levels in the range of 60-70 dBA. These levels were recorded during the above mentioned period consistently and we highly recommends these levels to be considered as acceptable ambient levels of noise for this project only.

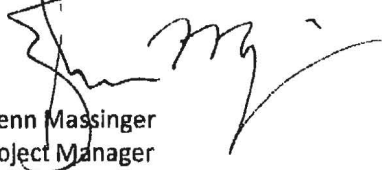
Attached to this letter is the summary of the Re:mote noise data collected for the time period of October 31, 2020 through December 15, 2020 and estimates that the noise levels during extended hours projected to the north properties would not be in excess of the noise regulations of the City.

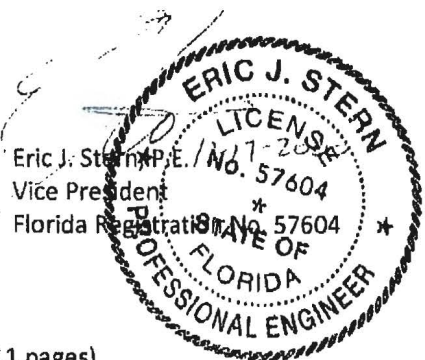
Complete copies of the data for each day have been available online.

CLOSURE

We appreciate the opportunity to be of service. In the event you have questions about information in this report, please contact the undersigned.

Sincerely,
NV5 Inc


Glenn Massinger
Project Manager



Attachments: Re:mote Unit Noise Summary Report (11 pages)
2 Copies to Addressee via U.S. Mail
Copy to NV5 File





December 18, 2020

Glenn Massinger, Project Manager
NV5
14486 Commerce Way
Miami Lakes FL 33016

Suite 4
6900 S. W. 21st Court
Davie, FL 33317

Phone 954.424.2101
Fax 954.424.2104

Re: Broward Convention Center – Noise Level Estimation – Additional Hours

Dear Mr. Massinger:

Per your request I am providing a review of noise levels that could be expected at the adjacent condominium property line to the north of the convention center for construction at hours outside of those outlined within the City of Fort Lauderdale noise regulations. Construction is currently operating at hours of 8:00 am to 7:00 pm. Due to time requirements on the project the proposed working hours will be 7:00 am to 10:00 pm the following day. As noise level monitoring has been completed with a Re:mote™ Noise Level Meter operated at the southeast corner of the building at 1799 SE 17th Street, Fort Lauderdale, FL this letter covers our opinion on the noise levels expected.

Noise is measured at ground level at the “receiving land use” property line according to the Fort Lauderdale Noise Code. With the unit in its existing location it is on the ground level with a microphone approximately 4 – 5’ off the ground consistent with how noise is to be measured. The noise is measured in a line consistent with the property line / building area of the structures north of SW 17th Street. The levels measured at this point would be consistent with those for comparison to the City code. The noise levels measured from the installation on October 31 through December 15 have been considered.

The extended hours that would be used in the upcoming work would be primarily for steel erection located at the northwest corner of the site extending south and parallel with the existing convention center. The closest area to the condominium to the north is approximately 570 feet. Associated with this work would be the use of a forklift that generates 85 dBA at a distance of 50 feet. This level is the estimated maximum and calculated at the closest point of the operation. As this is mobile equipment the peak level only occurs when the forklift would be in that closest area. At other times since the project would work south to north the levels would be consistently lower.

In order to determine compliance with the City regulations a calculation of noise at the adjacent properties is necessary. Noise reduces with distance and using a standard calculation noise may be predicted based upon an initial level and

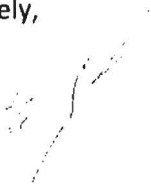
distance. The use of the inverse square law allows predication in that a sound level (intensity) will drop off as distance increases. This law which has been demonstrated by evidence and actual measurement calculates a six (6) decibel drop with a doubling of the distance in feet. Considering the 85 decibel level for the forklift at 570 feet noise would reduce to 64 dBA.

The predicted level is presuming no uninterrupted path for the sound and that no existing levels are considered. In this case the elevated section of the SE 17th Street Bridge over the Intracoastal Waterway would provide shielding and reduced noise at the property line. However, the largest reduction of noise would be the shadowing of any noise at the Convention Center by existing noise from the community and traffic on SE 17th Street.

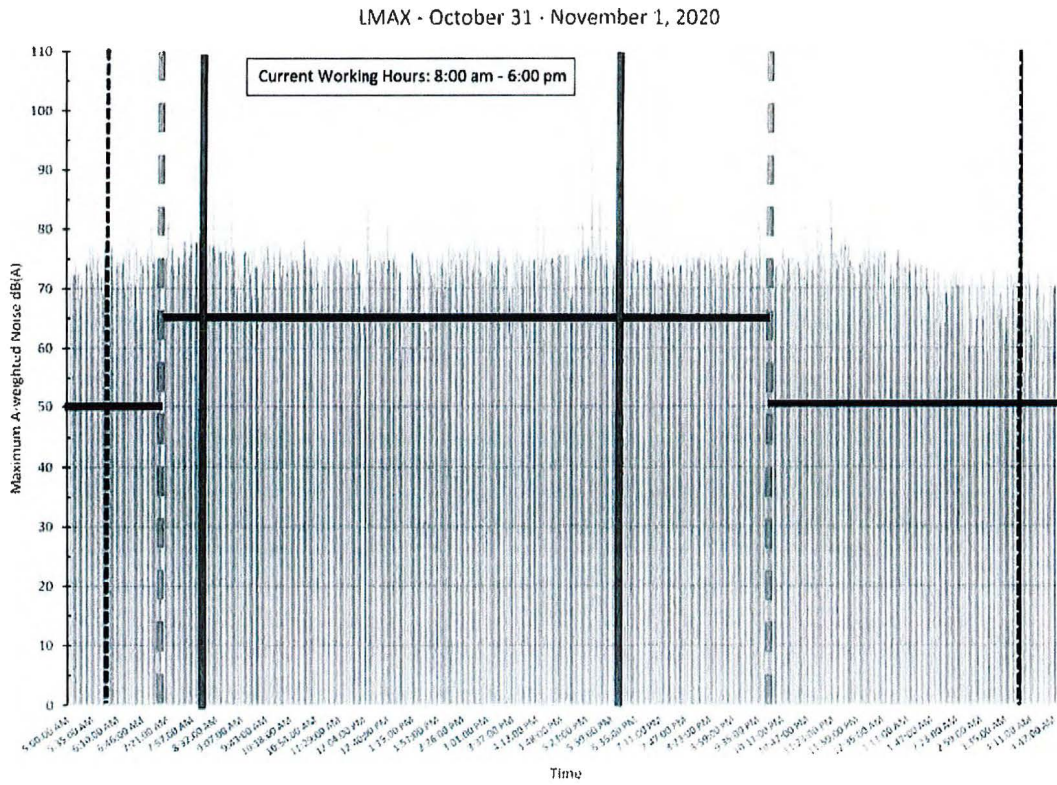
Measured levels from October 31, 2020 through December 16, 2020 show that noise from the adjacent street area and associated community produce levels that do not regularly go below 60-65 decibels up to 70 decibels. This data shows a solid noise level that exists over this period consistently. This may be considered as the "ambient" level of noise. Graphs are attached following the conclusion of this letter that show data from the noise meter for a series of dates which also identify City time frames and working shifts. Also shown are two graphs showing overall noise levels as the one minute maximum levels from October 28 through December 16, 2020. As the noise levels are 60 – 65 decibels at the minimum the 64 dBA generated by the forklift would be obscured by community ambient levels. Also, considering the noise levels occur 24-hours over this range of noise, the 60 dBA daytime and 50 dBA nighttime noise limits of the City cannot be met due to ambient conditions. In our opinion the noise levels projected to the north properties would not be in excess of the noise regulations of the City.

If you have any questions please feel free to contact me.

Sincerely,

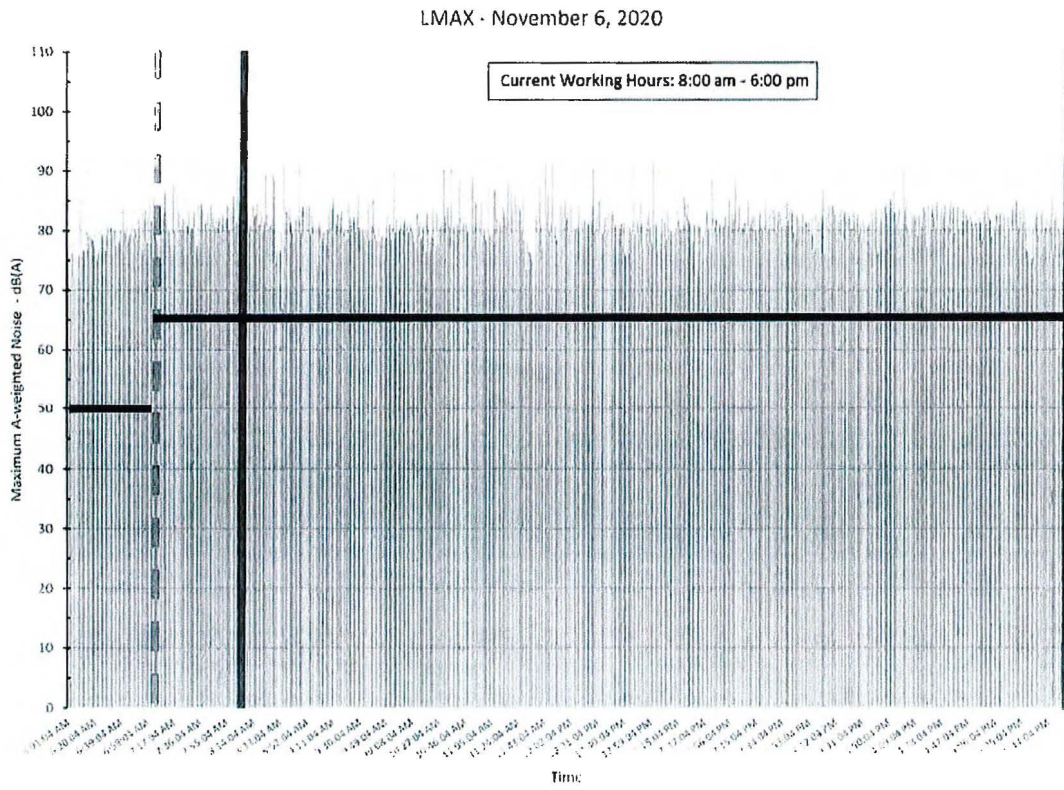


Jeffrey A. Straw
Vice President and Area Manager



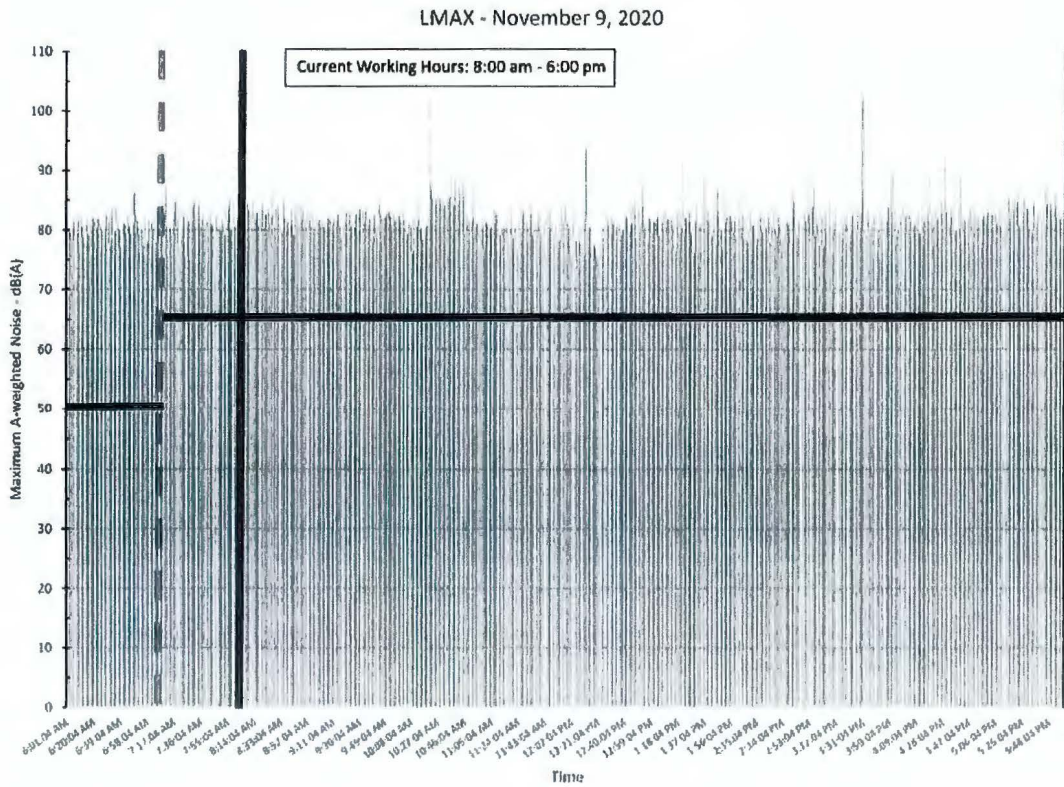
H:\Documents\NV5\Broward Convention\NV5-Convention center noise prediction letter-12-18-2020-LET.docx
Page 3 of 11

8.10 NV5 Signed and Sealed Engineered Calculation



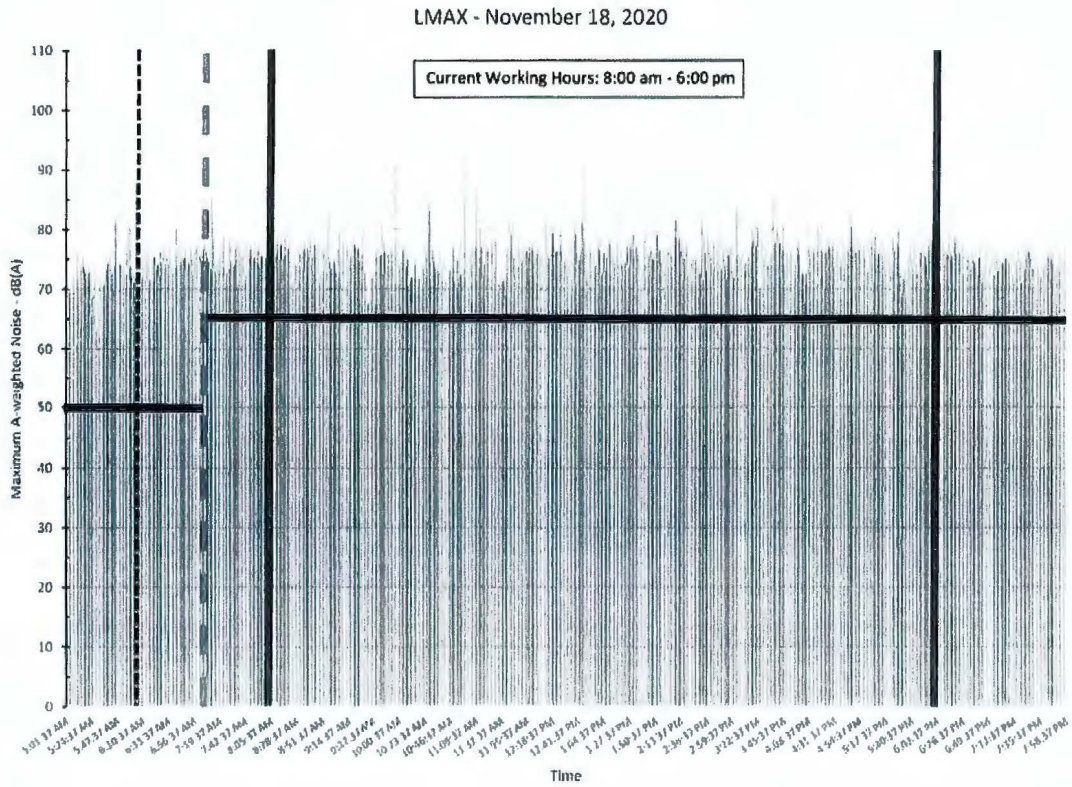
H:\Documents\NV5\Broward Convention\NV5-Convention center noise prediction letter-12-18-2020-LET.docx
Page 4 of 11

8.10 NV5 Signed and Sealed Engineered Calculation



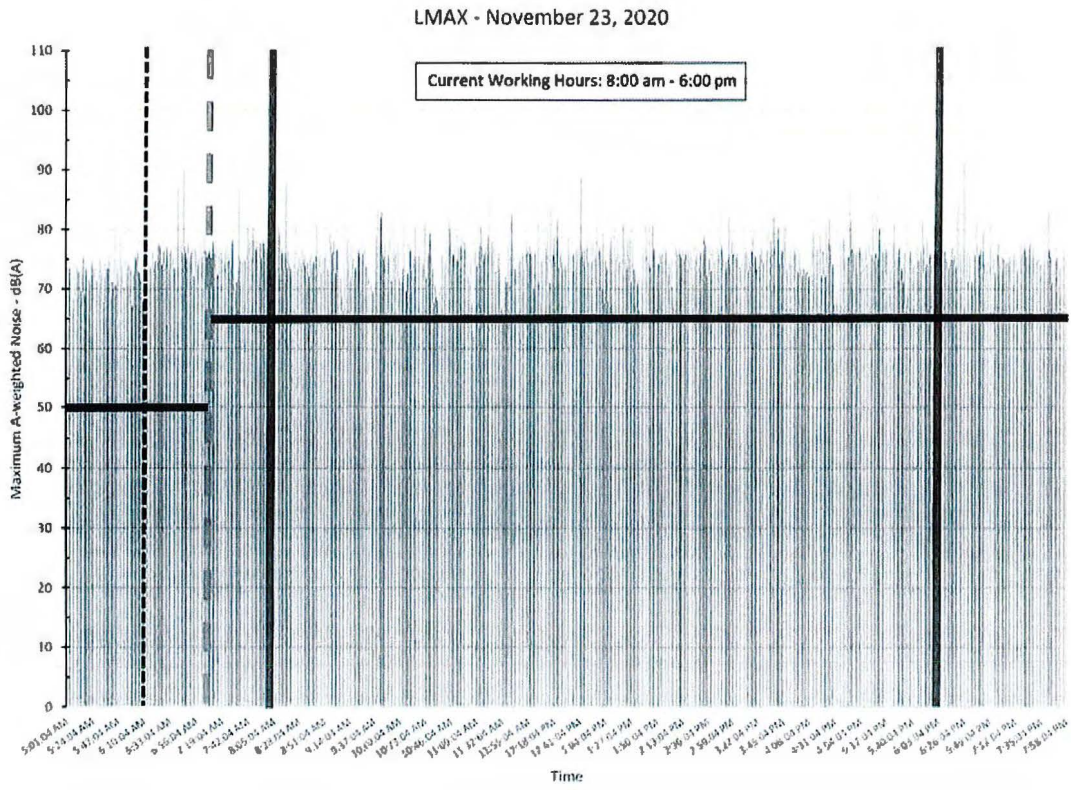
H:\Documents\NV5\Broward Convention\NV5-Convention center noise prediction letter-12-18-2020-LET.docx
Page 5 of 11

8.10 NV5 Signed and Sealed Engineered Calculation



H:\Documents\NV5\Broward Convention\W5-Convention center noise prediction letter-12-18-2020-LET.docx
Page 6 of 11

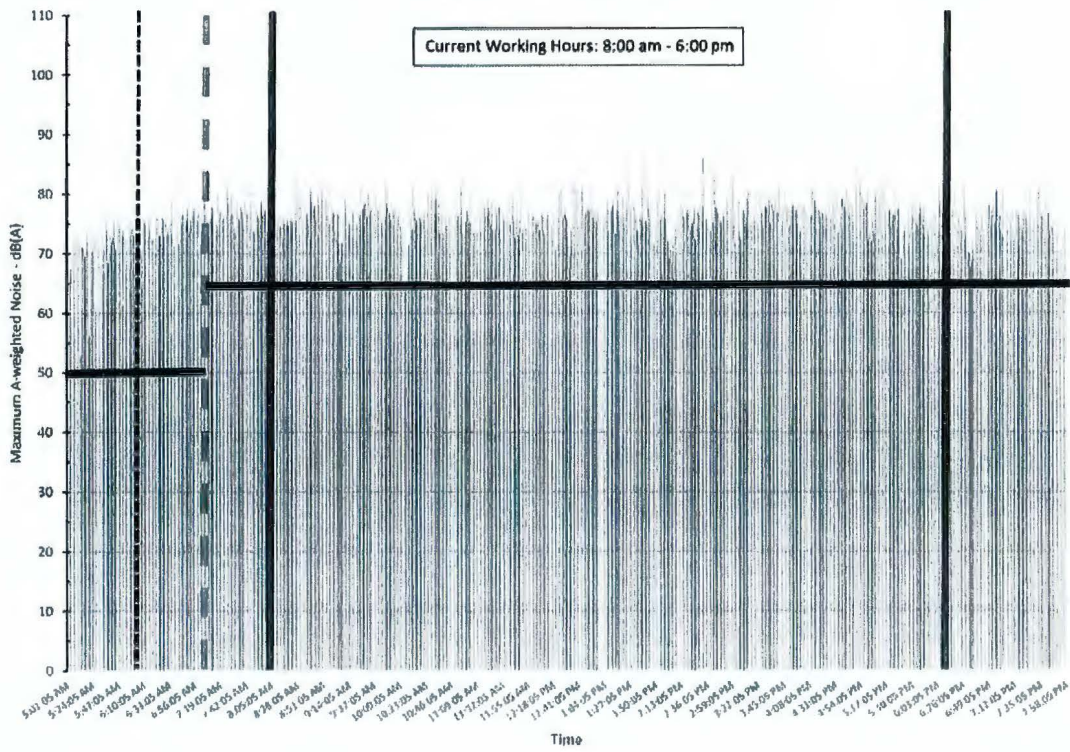
8.10 NV5 Signed and Sealed Engineered Calculation



H:\Documents\NV5\Broward Convention\NV5-Convention center noise prediction letter-12-18-2020-LET.docx
Page 7 of 11

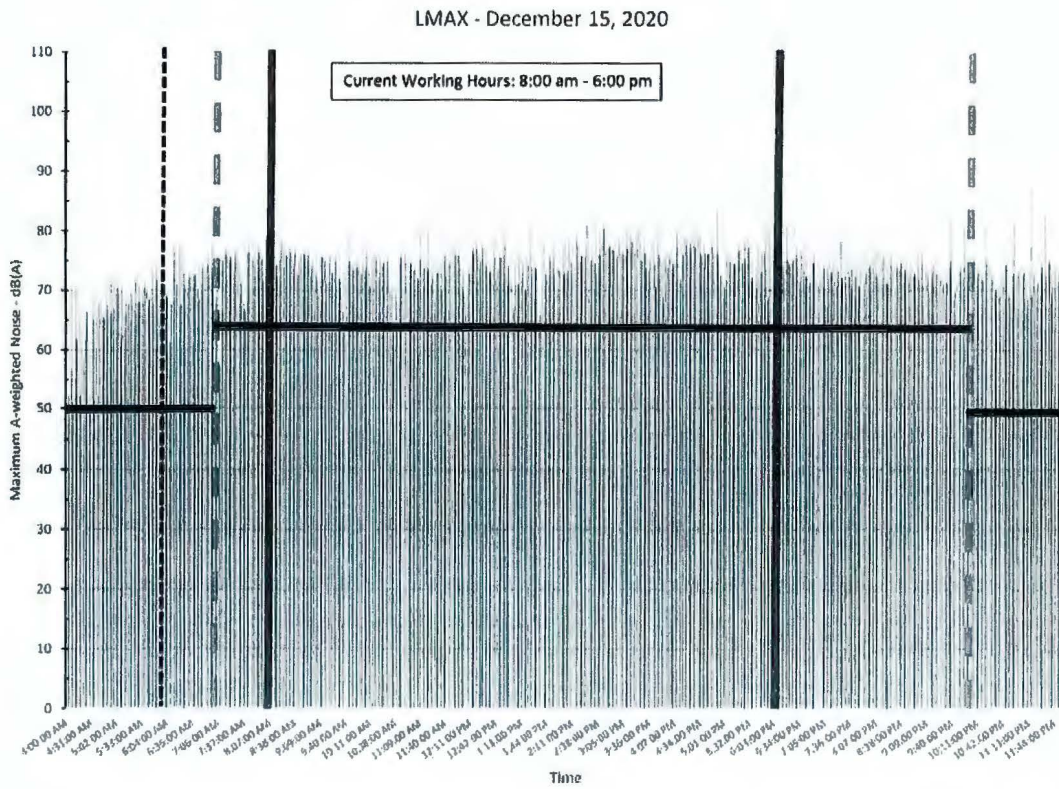
8.10 NV5 Signed and Sealed Engineered Calculation

LMAX - December 3, 2020



H:\Documents\WVS\Broward Convention\WVS-Convention center noise prediction letter-12-18-2020-LET.docx
Page 8 of 11

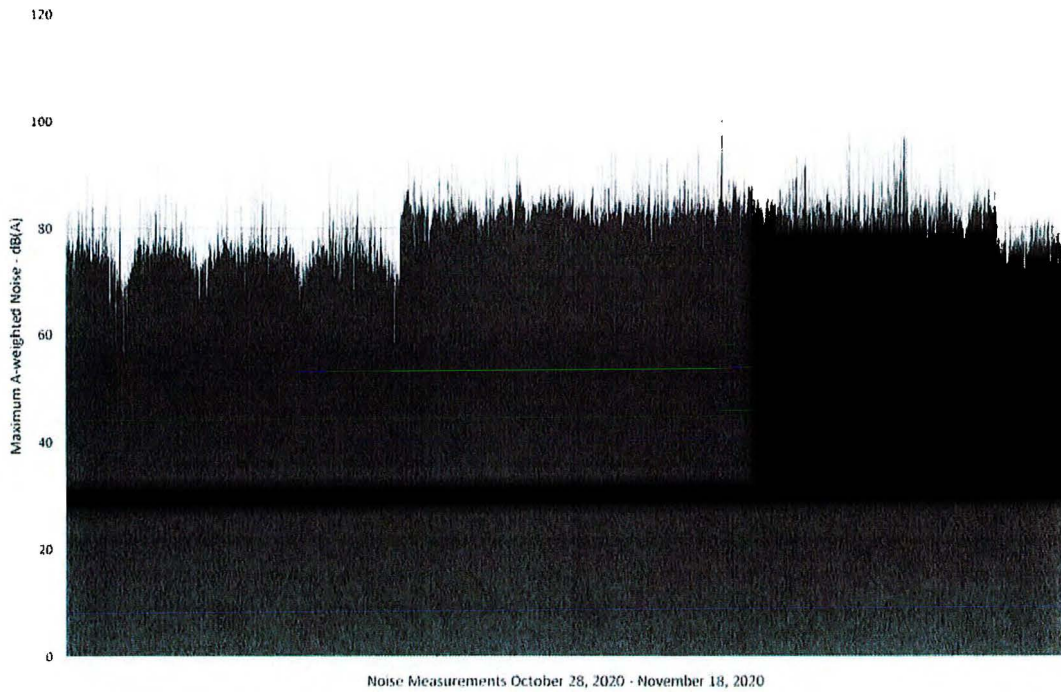
8.10 NV5 Signed and Sealed Engineered Calculation



H:\Documents\WV5\Bowward Convention\WV5-Convention center noise prediction letter-12-18-2020-LET.docx
Page 9 of 11

8.10 NV5 Signed and Sealed Engineered Calculation

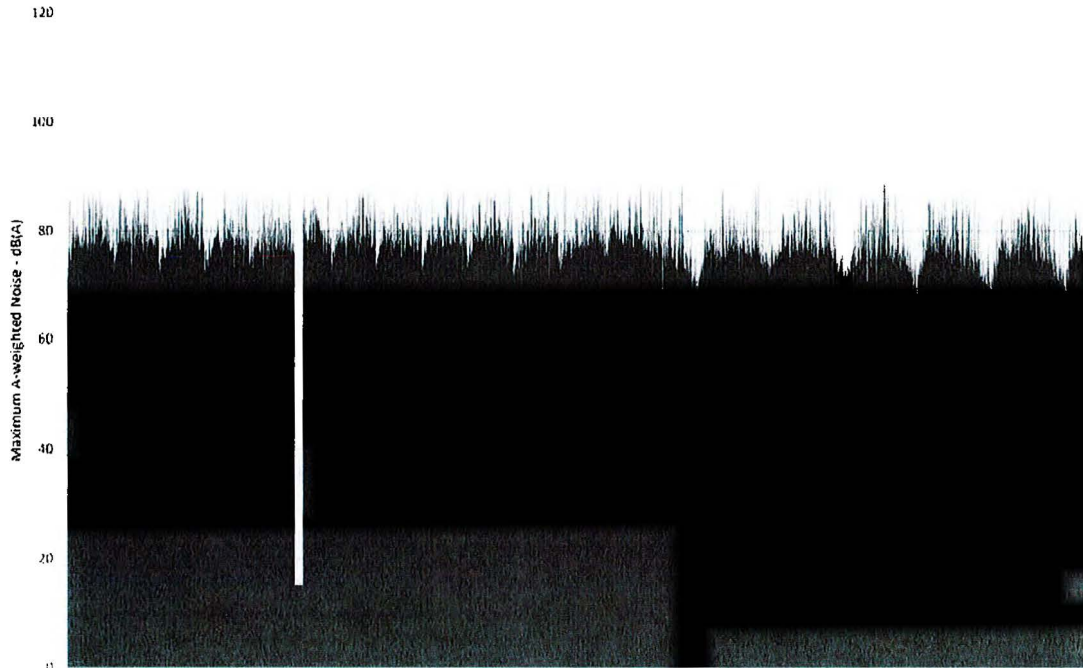
NV5, Inc.
Broward County Convention Center
Maximum Noise Levels 10/28/20 - 11/18/20



H:\Documents\NV5\Broward Convention\NV5-Convention center noise prediction letter-12-18-2020-LET.docx
Page 10 of 11

8.10 NV5 Signed and Sealed Engineered Calculation

NV5, Inc.
Broward County Convention Center
Maximum Noise Levels 11/19/20-12/16/20



Noise Measurements - November 19, 2020 - December 16, 2020

H:\Documents\NV5\Broward Convention\NV5-Convention center noise prediction letter-12-18-2020-LET.docx
Page 11 of 11

8.10 NV5 Signed and Sealed Engineered Calculation

RESOLUTION NO. 21-

A RESOLUTION OF THE CITY OF FORT LAUDERDALE, FLORIDA, AUTHORIZING THE APPROVAL OF ADDITIONAL EXTENSIONS OF TIME FOR A SPECIAL PERMIT ISSUED FOR AND EXEMPTING THE BROWARD COUNTY CONVENTION CENTER CONSTRUCTION FROM THE PROVISIONS OF SECTION 17-7.4 OF THE CODE OF ORDINANCES OF THE CITY OF FORT LAUDERDALE; AND PROVIDING FOR AN EFFECTIVE DATE.

WHEREAS, Section 17-7.4 of the Code of Ordinances of the City of Fort Lauderdale, Florida, provides that it is unlawful for any person to operate or cause to be operated equipment for construction, repair, alteration or demolition work on buildings, structures, streets, alleys, or appurtenances Monday through Saturday before 8:00 a.m. or after 7:00 p.m. and Sunday before 10:00 a.m. or after 7:00 p.m.; and

WHEREAS, Section 17-10 of the Code of Ordinances entitled "Construction of large or complex projects (transportation and non-transportation); empowers the city manager to grant a special permit exempting construction projects from the provisions of Section 17-7.4 upon the showing of good cause; and

WHEREAS, the City Commission adopted Ordinance No. C-21-08 on March 2, 2021 amending Section 17-7.4 of the Code of Ordinances to provide the City Commission with authority to grant additional extensions of time upon a showing of good cause and when it is demonstrated that the special permit is in the best interest of public health, safety or convenience.

WHEREAS, the City Manager granted a thirty (30) day special permit exempting the construction of the Broward County Convention Center from the provisions of Section 17-7.4 in order to allow sufficient time for the installation of necessary materials, equipment, facilities, or modifications necessary for construction pursuant to Section 17-10(a) that expired on February 24, 2021; and

WHEREAS, the City Manager granted an additional fifteen (15) days extension to the special permit as authorized pursuant to Section 17-10(b)(1) that is set to expire on March 11, 2021; and

WHEREAS, Broward County submitted a request that includes a Noise Management Plan in which Broward County requested that the City grant an extension to the special permit to October 2021;

WHEREAS, The Noise Management Plan submitted by Broward County and presented to the City Commission at its March 2, 2021 City Commission regular meeting shows good cause and demonstrates that the special permit is in the best interests of public health, safety, and convenience.

NOW, THEREFORE, BE IT ORDAINED BY THE CITY COMMISSION OF THE CITY OF FORT LAUDERDALE, FLORIDA:

SECTION 1. The foregoing "WHEREAS" clauses are hereby ratified and confirmed as being true and correct and are hereby made a specific part of this Resolution.

SECTION 2. That the City Manager is hereby authorized to grant an additional extension of time to the special permit issued to Broward County exempting the construction of the Broward County Convention Center from the provisions of Section 17-7.4 in order to allow sufficient time for the installation of necessary materials, equipment, facilities, or modifications necessary for construction pursuant to Section 17-10(a).

SECTION 3. That the City Manager shall have the ability to revoke the permit pursuant to Section 17-10(b)(7). Notwithstanding the above specific grant to the City Manager, the City Commission reserves to itself the right to revoke the special permit under Section 17-10(c).

SECTION 4. That this authorization and any extensions granted pursuant to it shall expire on October 31, 2021.

SECTION 5. That this resolution shall be in full force and effect upon final passage.

ADOPTED this ____ day of _____, 2021

Mayor
DEAN J. TRANTALIS

ATTEST:

City Clerk
JEFFREY A. MODARELLI