

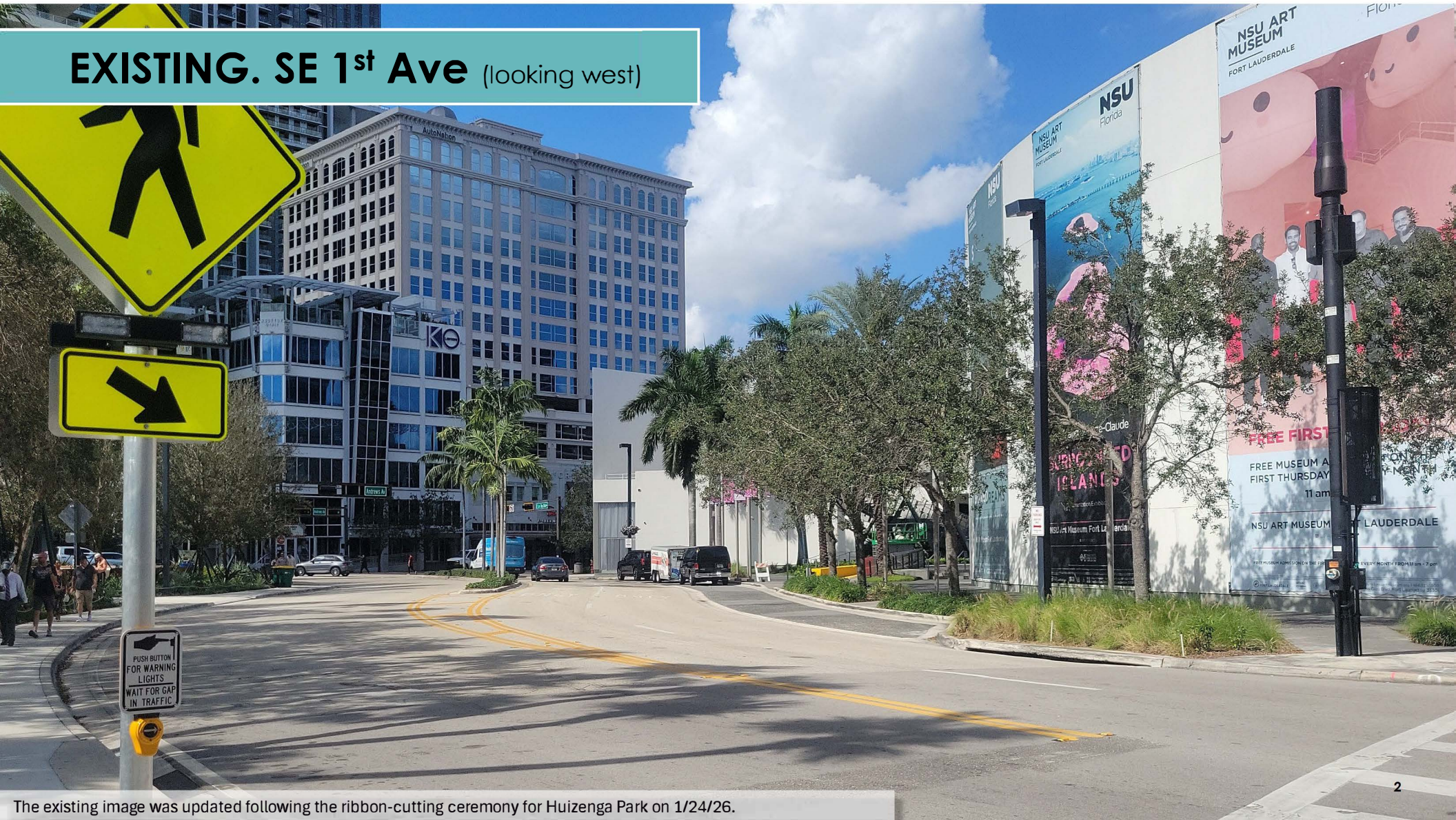


DOWNTOWN

DOWNTOWN

Advances the cross sections identified in the accepted
version of the 2021 Las Olas Mobility Vision Plan

EXISTING. SE 1st Ave (looking west)



2

The existing image was updated following the ribbon-cutting ceremony for Huizenga Park on 1/24/26.

The rendering is intended to visually represent the proposed design.

PROPOSED: SE 1st Ave (looking west)

$\cong 4X^*$
increase in
tree canopy -
Downtown

95%
SHADE
TREES

FLOWERING
& PALM
TREES

34 LARGE, 127 MEDIUM, 9 SMALL,
10 PALM TREES
TOTAL = 180 TREES

Median
extended
to SE 1st
Ave

Raised
intersection
at
SE 1st Ave

3

*Pursuant to direction from the City Commission on 1/20/26, the following changes were made:

- Increase of $\cong 4X$ in tree canopy coverage as compared to the current conditions (previously shown as $\cong 3X$ increase).
- Percentage of shade trees is 95% (some shade trees are also flowering).

EXISTING: Huizenga Park (looking west)



**Sidewalk
Width**
(6 Ft existing)

4

The existing image was updated following the ribbon-cutting ceremony for Huizenga Park on 1/24/26.

The rendering is intended to visually represent the proposed design.

PROPOSED: Huizenga Park (looking west)



Sidewalk Width
(6 Ft existing)

Widen Sidewalk Width
(additional 1 to 7 Ft)

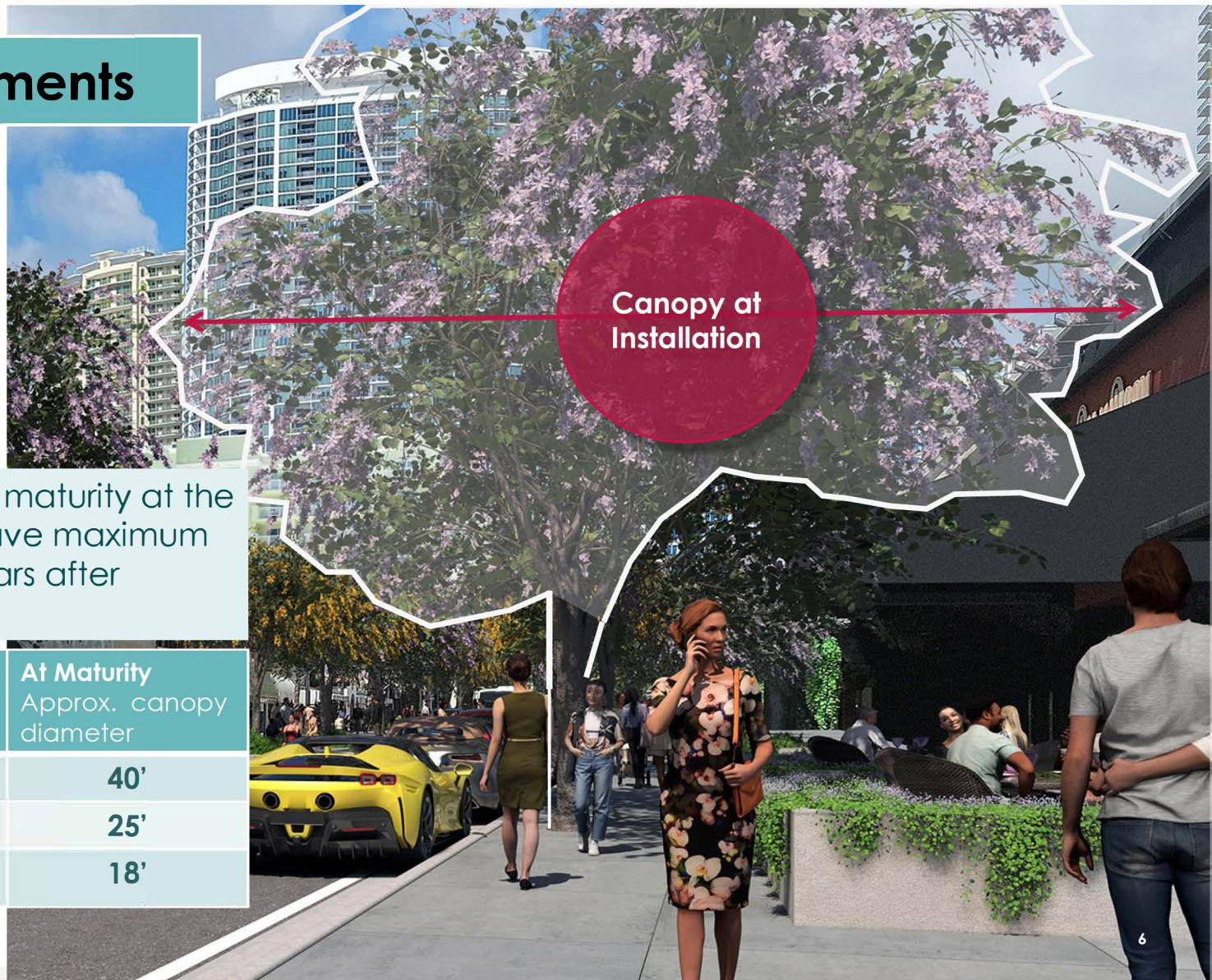
Landscape area
(5 Ft proposed)

Raised mid-block crosswalk with RRFB

Livability Improvements

Proposed trees will be at 75% maturity at the time of installation and will have maximum shade potential within 5-8 years after installation.

	At Installation Approx. canopy diameter	At Maturity Approx. canopy diameter
Large trees	35'	40'
Medium trees	20'	25'
Small trees	15'	18'



Proposed Tree Species

Large Canopy Trees



Thornless Pink Ceiba



Southern Live Oak

Species Selection Criteria:

1) Resilience

- To hotter and saltier future conditions
- To pests and diseases
- Ability to thrive in a constrained urban environment

2) Placemaking

- Flowering and evergreen trees
- Small, medium, and large canopy trees to anchor spaces

3) Maintenance

- The city can maintain the trees in the long-term

Large Canopy Trees: Jamaican Dogwood, Thornless Pink Ceiba, Gumbo Limbo, Live Oak

Proposed Tree Species

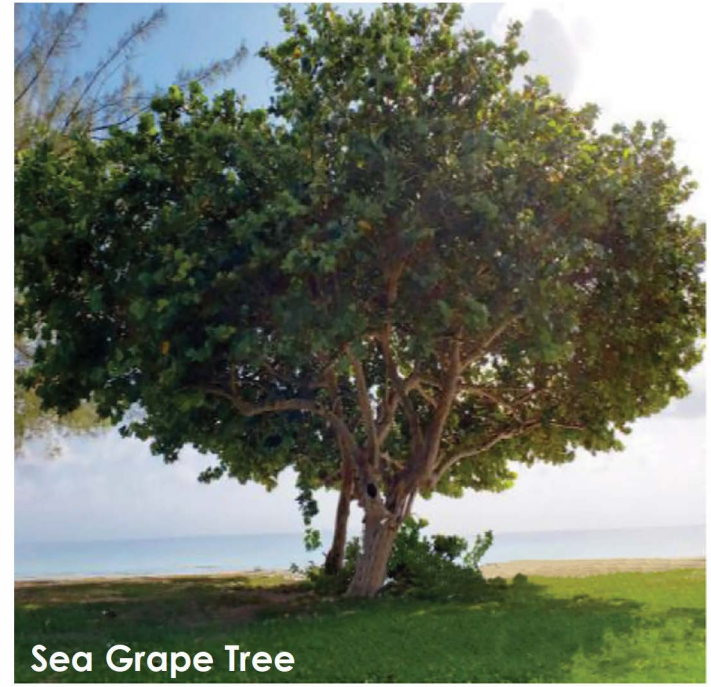
Medium Canopy Trees



Jamaican Dogwood



White Mangrove

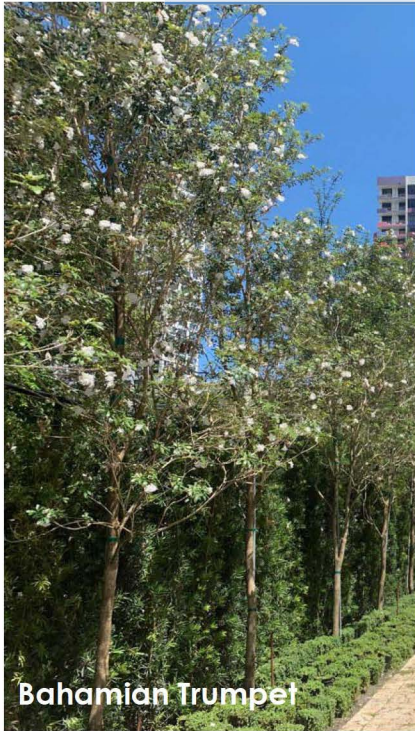


Sea Grape Tree

Medium Canopy Trees: Sea Grape tree, Green Buttonwood, White Mangrove, Black Ironwood

Proposed Tree Species

Small Canopy Trees



Bahamian Trumpet



Lignum Vitae



Silver Buttonwood

Small Canopy trees: Bahamian Trumpet Tree, Lignum Vitae tree, Bridal Veil Tree, Silver Buttonwood

Livability Improvements

SIDEWALK

Entire corridor



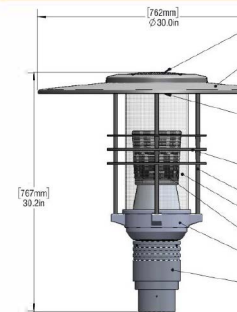
SEATING (precast concrete)

Entire corridor



LIGHTING

Downtown



Pole height 13'

Entire corridor
(Vehicle Lighting)



COST: \$

DURABILITY: ++++

MAINTENANCE: Minimal

COMMENTS: Custom colors,
permeable

\$\$

++++

Minimal

Modular and customizable with
handrails

\$\$

+++

Moderate

Modular with different finishes
and mounting heights

\$\$\$

+++

Moderate

Modular, various
finishes, mounting
heights

DOWNTOWN SUMMARY

		EXISTING	PROPOSED
SAFETY, MOBILITY	Sidewalk		Sidewalk widened between Andrews & SE 1st Ave.
	Metered On street Parking	46 spaces	No impact on existing on-street parking 46 spaces
LIVABILITY	Tree canopy at maturity*		≈4X increase
	Number of trees*	<ul style="list-style-type: none"> • Large: 9 • Medium: 25 • Small: 16 • Palm: 65 <hr/> Total : 115 trees	<div> <ul style="list-style-type: none"> • Large: 34 • Medium: 127 • Small: 9 • Palm: 10 <hr/> Total : 180 trees </div> <div> } 95% Shade trees </div>
STORMWATER	Existing stormwater capacity	Up to 8.5" in a 24-hour period before flooding.**	Additional stormwater capacity not proposed.

*Tree canopy size: Small 18' canopy; Medium 25' canopy; Large trees 40' canopy

**Meets the minimum Citywide Stormwater Level of Service of 10-year, 24-hour event in 2025, 2040, 2070, adopted by the city

Downtown

Opinion of Construction Cost (OPCC)

Approximately \$5.0M+ *(being updated)*

OPCC does not include:

- Landscape improvements requested by the City Commission on January 20, 2026
- Wayfinding signage cost, and design-build contractor and Construction Engineering Inspection (CEI) fees

OPCC includes:

- Civil, stormwater, landscape (prior to January 20, 2026, direction), lighting, and utilities
- Pavement markings, signage, MOT, and mobilization
- Record drawings and environmental protection
- Limited contingency