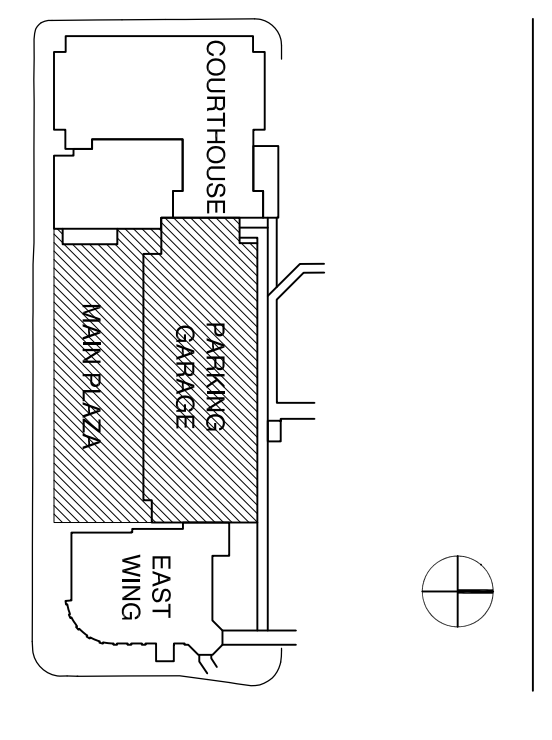


MARK	DATE	ISSUED FOR:
	06/13/11	DRG. SUBMITTAL
	11/19/11	DRG. RE-SUBMITTAL

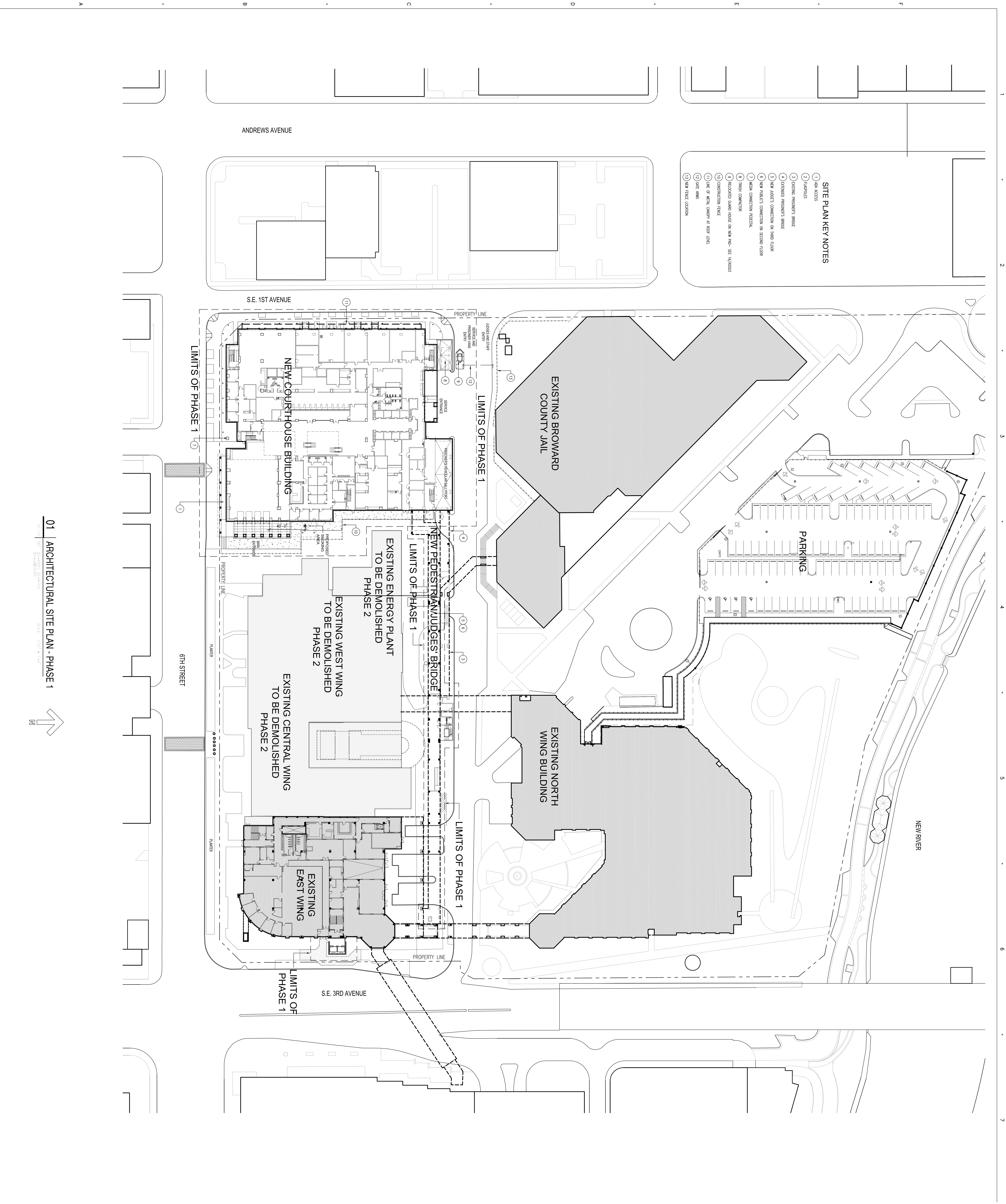
PROJECT NO: 60102128

KEY PLAN



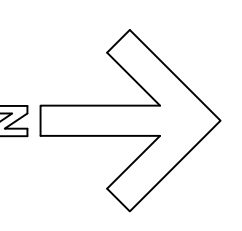
SHEET TITLE  
ARCHITECTURAL  
SITE PLAN - PHASE 1  
DEMOLITION

AG1.1.01A



- SITE PLAN KEY NOTES**
- 1) ADA ACCESS
  - 2) OVERPASS
  - 3) EXISTING PRISONER'S BRIDGE
  - 4) EXISTING PRISONER'S BRIDGE
  - 5) NEW JUDGE'S CONNECTION ON THIRD FLOOR
  - 6) NEW PEDESTAL CONNECTION ON SECOND FLOOR
  - 7) MEDIA CONNECTION PROVISION
  - 8) TRASH CONNECTION
  - 9) RELOCATED GARAGE HOIST ON NEW 4th - SEE 16/A0003
  - 10) CONSTRUCTION FENCE
  - 11) LINE OF MEDIA CROWN AT ROOF LEVEL
  - 12) DATE: 06/06
  - 13) NEW FENCE LOCATION

01 | ARCHITECTURAL SITE PLAN - PHASE 1



NOTE:  
 THE BREZEWAY'S WALL FINISHES, LIGHT FIXTURES, FLOOR PATTERNS AND  
 DETAILING SHOWN IN THESE DOCUMENTS DO NOT INDICATE FINAL DESIGN.  
 FINAL DESIGN PLANS OF THE BREZEWAY WILL BE RESUBMITTED TO THE  
 BROWARD COUNTY BOARD OF COUNTY COMMISSIONERS FOR FINAL DESIGN  
 APPROVAL, FOLLOWING BROWARD COUNTY APPROVAL OF THE RELATED  
 BREZEWAY PUBLIC ART DESIGN PROJECT.

FORT LAUDERDALE, FLORIDA

JOINT VENTURE TEAM

**SPILLUS CANDELA & PARTNERS, HEBERY**  
 / **CARTAYA GONZ VENTURE**

**AECON**  
 460 STATE STREET  
 800 DONALDSON AVENUE, SUITE 200  
 CORAL GABLES, FL 33134  
 T:305.444.4691 F:305.447.2580

**HEERY INTERNATIONAL**  
 999 PEACHTREE STREET NE  
 ATLANTA, GEORGIA 30309  
 T:404.940.2490 F:404.418.9188

**CARTAYA & ASSOCIATES**  
 2460 E. COMMERCIAL BLVD.  
 FORT LAUDERDALE, FLORIDA 33308  
 T:954.771.2724

CONSULTANTS

CIVIL ENGINEER

**GRAVEN THOMPSON & ASSOCIATES**  
 3565 N.W. 53RD STREET #1809  
 FORT LAUDERDALE, FLORIDA 33309  
 T:954.739.6509 F:954.733.8499

PLUMBING / FIRE PROTECTION ENGINEER

**HAMMOND & ASSOCIATES**  
 7234 N.W. 5TH STREET  
 PLANTATION, FLORIDA 33317  
 T:954.327.7171 F:954.327.7154

LANDSCAPE ARCHITECT

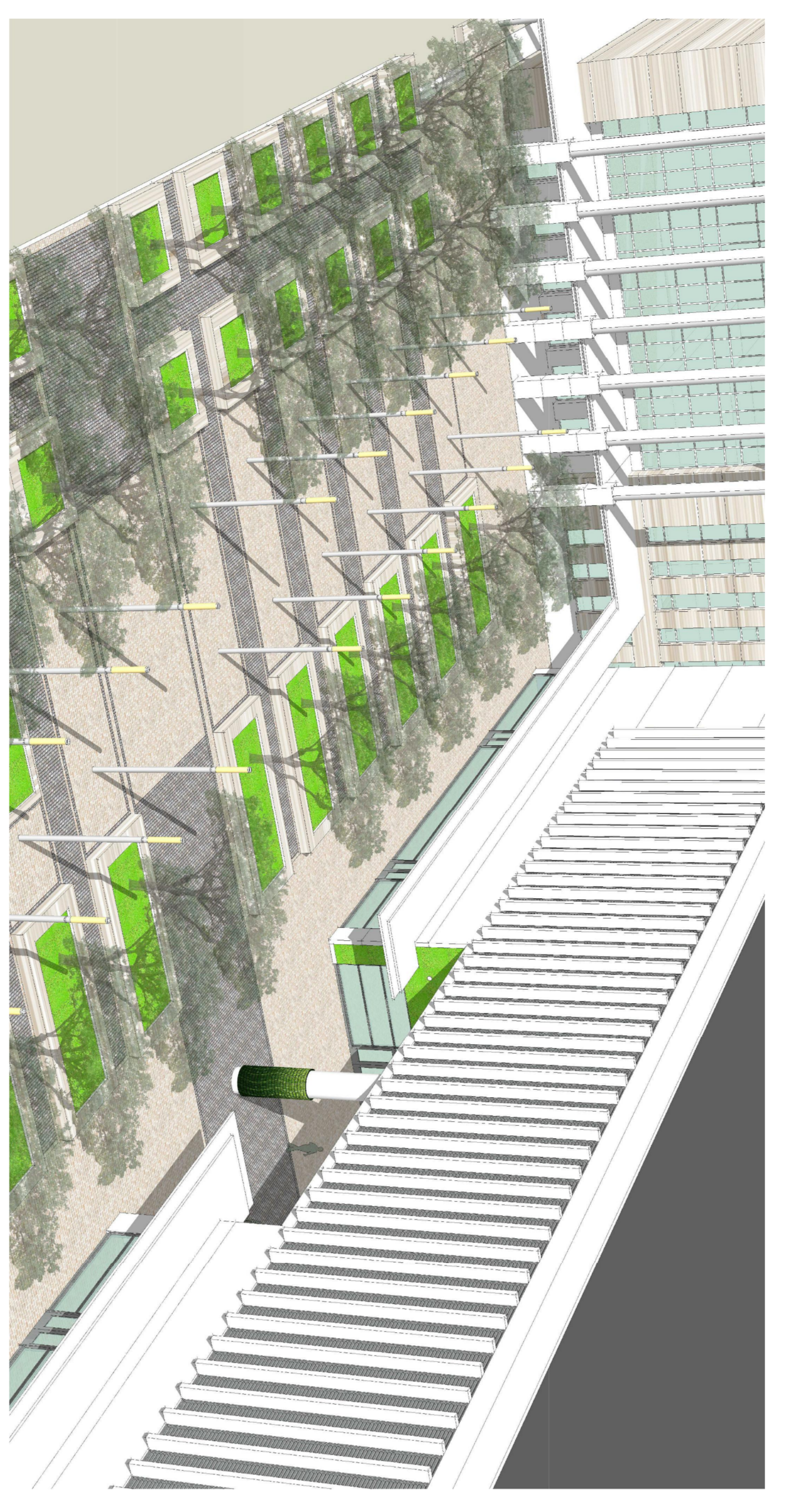
**CURTIS & ROGERS DESIGN STUDIO**  
 3440 HOLLYWOOD BLVD., SUITE 415,  
 HOLLYWOOD, FLORIDA 33308  
 T:954.610.4412 LC 0000241



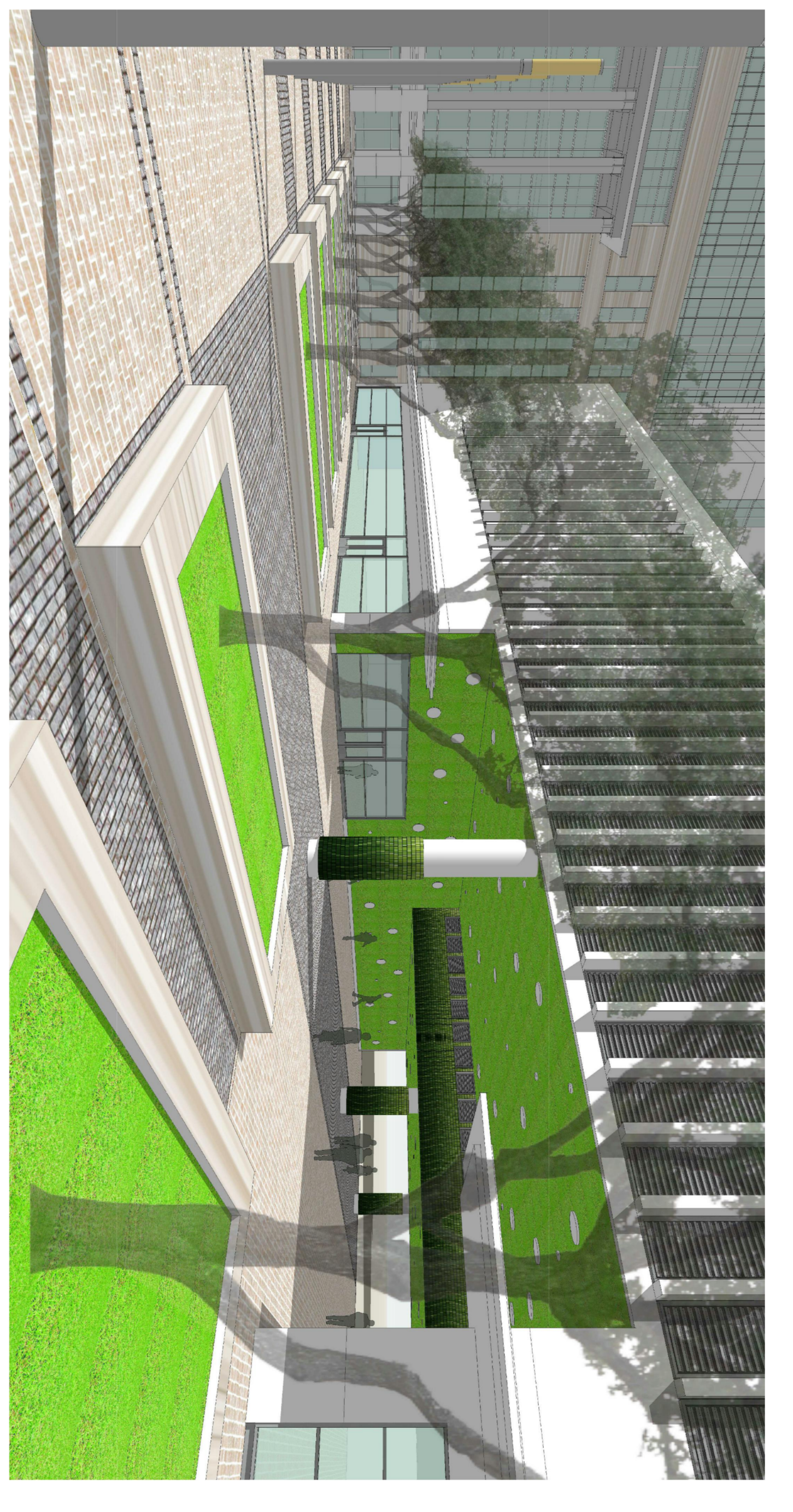
3 | PERSPECTIVE – SOUTHWEST VIEW  
 REF: \_\_\_\_\_  
 SCALE: NTS



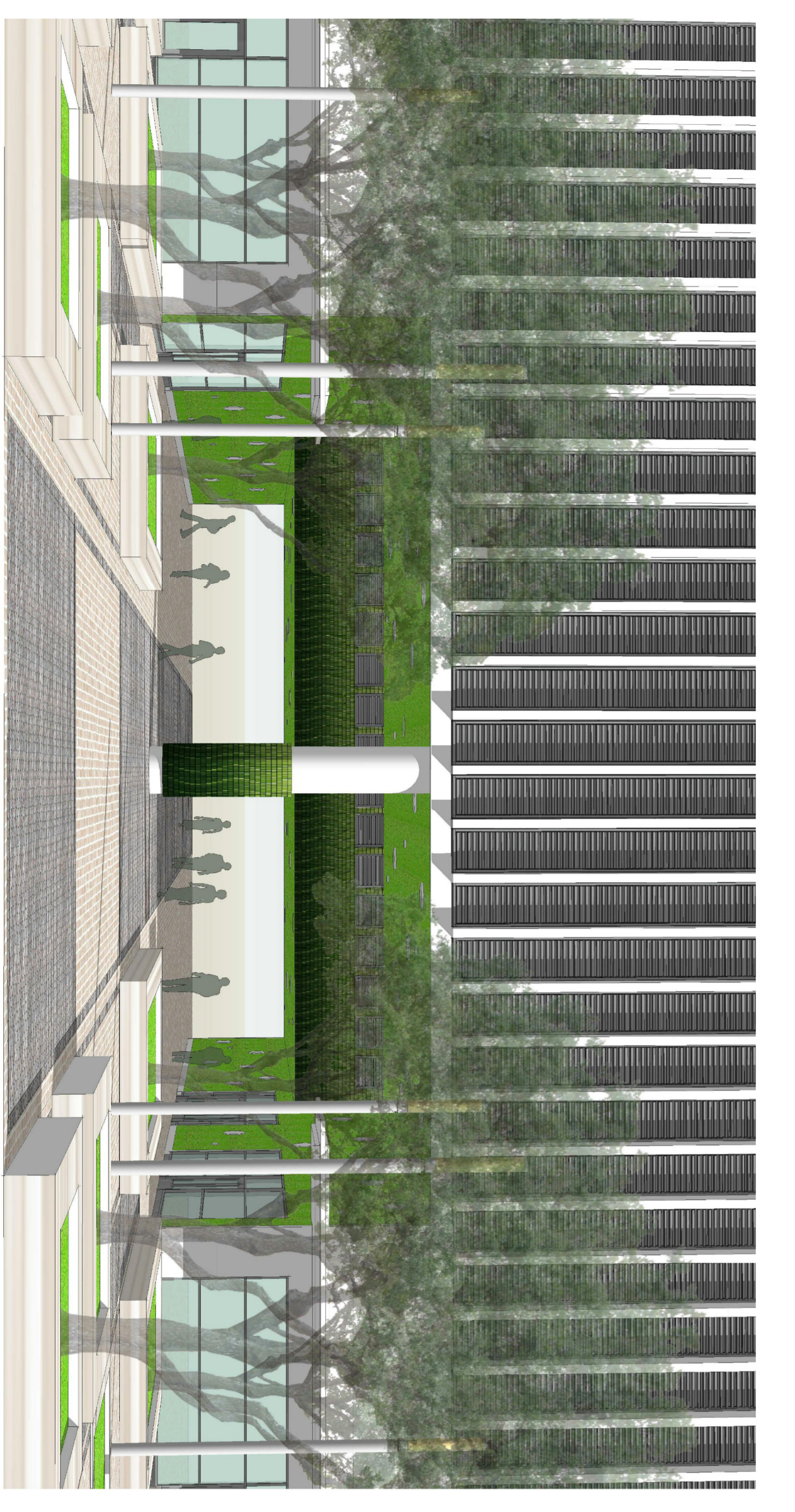
6 | PERSPECTIVE – PLAZA VIEW  
 REF: \_\_\_\_\_  
 SCALE: NTS



2 | AERIAL PERSPECTIVE – PLAZA VIEW  
 REF: \_\_\_\_\_  
 SCALE: NTS



5 | PERSPECTIVE – PLAZA VIEW  
 REF: \_\_\_\_\_  
 SCALE: NTS



1 | PERSPECTIVE – PLAZA VIEW-BREEZEWAY  
 REF: \_\_\_\_\_  
 SCALE: NTS



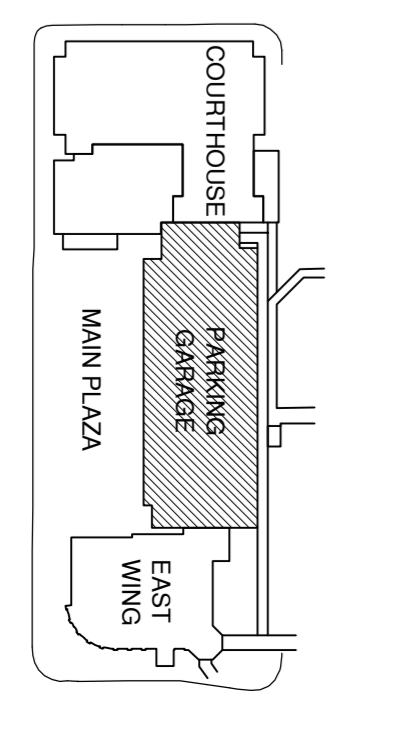
4 | PERSPECTIVE – FRONT ELEVATION/PLAZA  
 REF: \_\_\_\_\_  
 SCALE: NTS

MARK	DATE	ISSUED FOR:
	09/13/21	DRC SUBMITTAL
	11/16/21	DRC RE-SUBMITTAL

REGISTRATION  
 PROFESSIONAL OF RECORD: EMILIE L. MACA  
 DISCIPLINE: ARCHITECTURE  
 REGISTRATION NO.: 12727

PROJECT NO.: 60102128

KEY PLAN



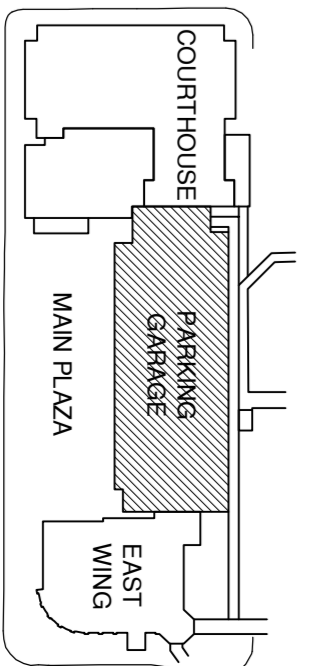
SHEET TITLE

DRC  
 RENDERINGS

AG5.0.00

MARK	DATE	ISSUED FOR:
1	11/16/11	DRC RE-SUBMITTAL

PROJECT NO:	60102128
KEY PLAN	



SHEET TITLE

**DRC**  
**RENDERINGS**

AG5.0.01



1 | PERSPECTIVE – COURTHOUSE DRIVE VIEW  
SCALE: NIS



2 | PERSPECTIVE – PLAZA VIEW  
SCALE: NIS