



INTERNATIONAL SWIMMING HALL OF FAME **PHASE ONE UPDATE**

CITY COMMISSION CONFERENCE MEETING
JANUARY 7, 2025



GENERAL OVERVIEW

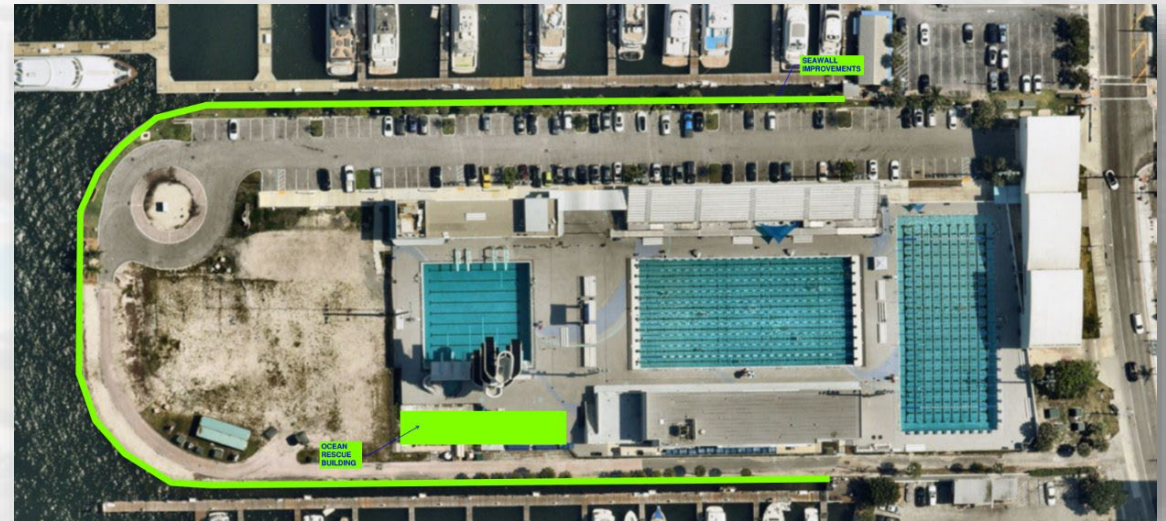
ISHOF PROJECT OVERVIEW



GENERAL OVERVIEW

SEAWALL IMPROVEMENTS OVERVIEW

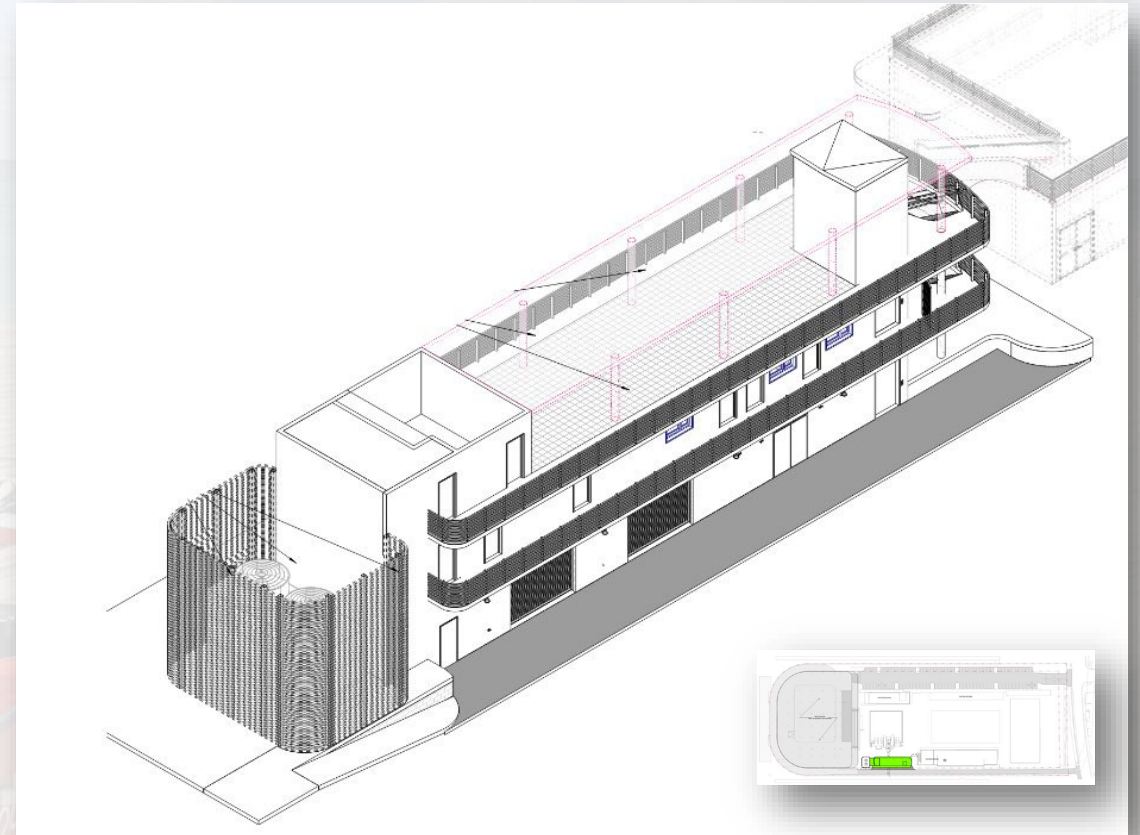
- Replace Existing Seawall that is approximately 60+ years old
- Install Over 1,400 Linear Feet of Seawall
- Approximately \$10M Investment



GENERAL OVERVIEW

OCEAN RESCUE HQ OVERVIEW

- Building Information
 - Size: 7,600Sq Ft
 - Office Space, Storage, Aquatic Center Rooftop Viewing Area
- Timing & Approval Process
 - DRC Administration Review Level
 - DRC Submission anticipated in early 2025
 - Does not require additional City Commission approval



GENERAL OVERVIEW

OCEAN RESCUE RENDERINGS

Option One: Open Rooftop



Option Two: Closed Rooftop



PHASE ONE IMPACTS GENERAL TIMELINE

	2025				2026			
	Q1 JAN - MAR	Q2 APRIL - JUNE	Q3 JULY - SEPT	Q4 OCT - DEC	Q1 JAN - MAR	Q2 APRIL - JUNE	Q3 JULY - SEPT	Q4 OCT - DEC
Enabling Work & Demo	█							
Seawall		█						
Ocean Rescue		█						

PHASE ONE IMPACTS

POTENTIAL IMPACTS

Construction Overview

- On-Site Cranes
- Increased Heavy Equipment Traffic
- On-sight Parking
- Work Hours*
 - Five days per week
 - 7:00am - 6:00pm

Construction Noise

- Noise generating work won't start until 8:00am
- Sheet Pile Driving
- Demolition of the East Building
- General Construction Noise

Peninsula Access

- Parking Impacts during North Seawall Installation
- Temporary Internal Detours
- Water Taxi Stop Impacts
- Alternative Pedestrian Paths

Planning Efforts

- Spring Break/ ISHOF / Special Events Coordination
- Central Beach Alliance Meetings
- Weekly City Manager's Office Meetings
- Traffic Lane Closure Coordination

PHASE ONE IMPACTS

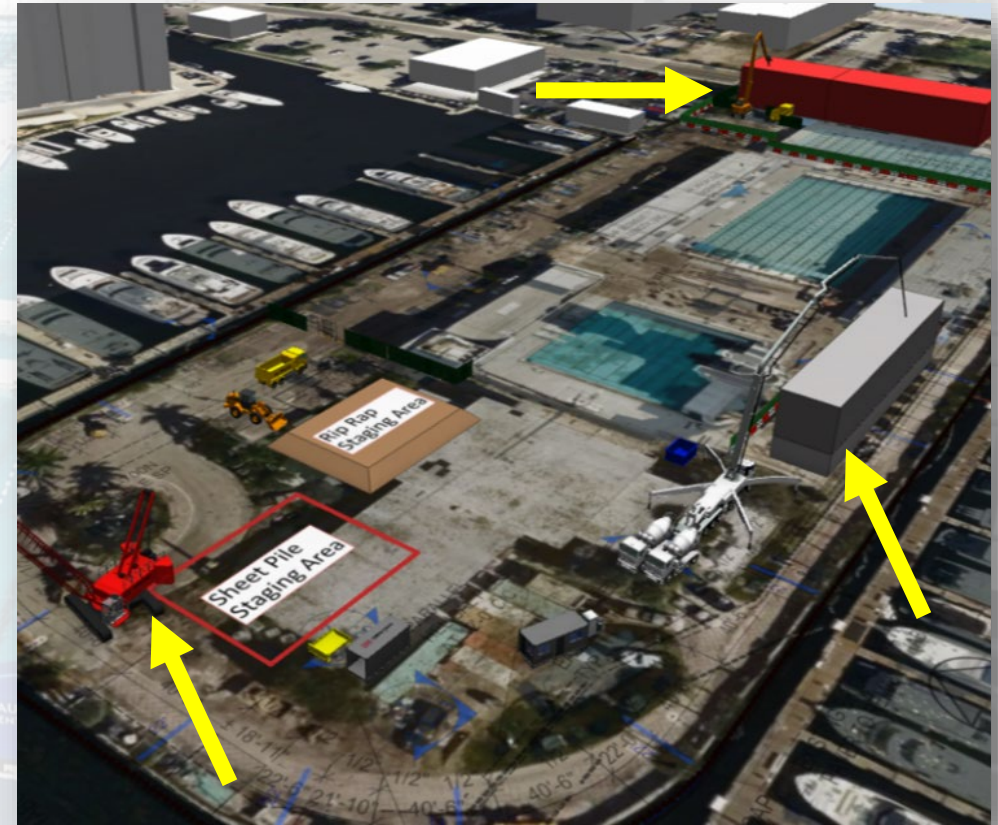
JANUARY – MARCH 2025

- Site Mobilizations
- Enabling Work
- Ocean Rescue Site Demolition
- Ocean Rescue Deep Foundation Installation



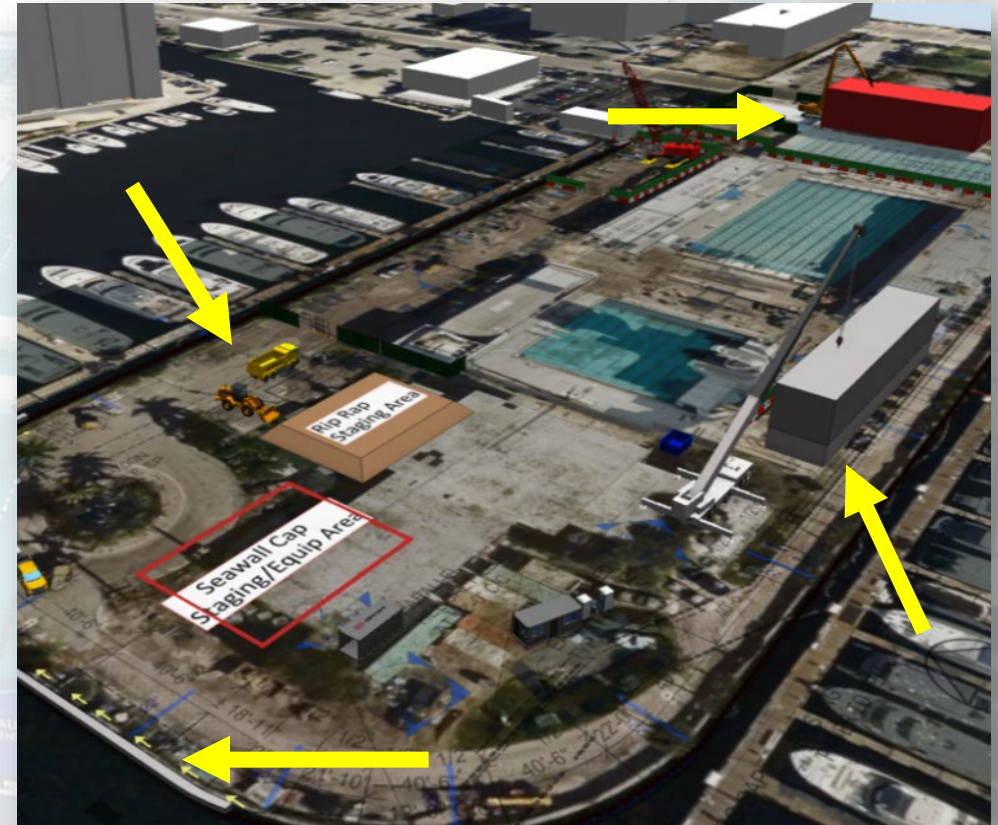
PHASE ONE IMPACTS APRIL - JUNE 2025

- Ocean Rescue Vertical Construction Begins
- Seawall Sheet Install (West)
- Begin Demolition of Existing East Building



PHASE ONE IMPACTS JULY – SEPTEMBER 2025

- Ocean Rescue Structure & Interior Rough-In
- Seawall Cap Install (West)
- Seawall Sheet Install (North)
- Complete East Building Demolition



PHASE ONE IMPACTS

OCTOBER – DECEMBER 2025

- Ocean Rescue Interior Buildout
- Seawall Cap Install (North)
- Seawall Sheet Install (South)
- Boat Show Coordination & Remobilization

