



FORT LAUDERDALE PARKS AND RECREATION BOND MASTER PLAN DESIGN & IMPLEMENTATION PROGRAM

LOCKHART COMMUNITY PARK – COMMISSION CONFERENCE MEETING
APRIL 2, 2024





AGENDA

1. Site Planning Updates
2. 60% DD Drawings
3. Cost Estimate & Development Schedule
4. Next Steps



1. PROGRESS UPDATES



PROGRESS UPDATE

▪ Completed

- 60% Design Development Drawings – pending approval
 - Grading and drainage plans
 - Water and sewer service
 - Site lighting plan
 - Architectural design
 - Landscape architecture
 - Wayfinding and signage
- Environmental Site Assessment
 - Phase 2 Groundwater Monitoring underway
- Traffic Evaluation and Statement
- Development Review Committee (DRC) Submittal – 3/4/2024
 - Scheduled for 3/26/2024 DRC agenda



2. 60% DESIGN DEVELOPMENT DRAWINGS



UPDATED SITE PLAN



Proposed Park Elements Legend

1	10,000 - 20,000 SF Community Center
2	Splash Play Area
3	Playground
4	Fitness Area
5	Dog Park
6	Shelter
7	Artificial Turf Multipurpose Playfield
8	Pickleball Courts
9	Open Green Space
10	Passive Open Green Space
11	Maintenance Building
12	Restroom
13	Pathways
14	Paved Parking Lot
15	Drop-off Area
16	Overflow Grass Parking Lot
17	Pedestrian Access Point
18	Pedestrian Crosswalks
19	Dog-Washing Station

Proposed Park Elements Legend

1	10,000 - 20,000 SF Community Center
2	Splash Play Area
3	Playground
4	Fitness Area
5	Dog Park
6	Shelter
7	Artificial Turf Multipurpose Playfield
8	Pickleball Courts
9	Open Green Space
10	Passive Open Green Space
11	Maintenance Building
12	Restroom
13	Pathways
14	Paved Parking Lot
15	Drop-off Area
16	Overflow Grass Parking Lot
17	Pedestrian Access Point
18	Pedestrian Crosswalks
19	Dog-Washing Station

Park Boundary
 (*Note: Sports Field Flood Lights to be used if allowed by FAA Restrictions)
 0 25 50 100 Feet



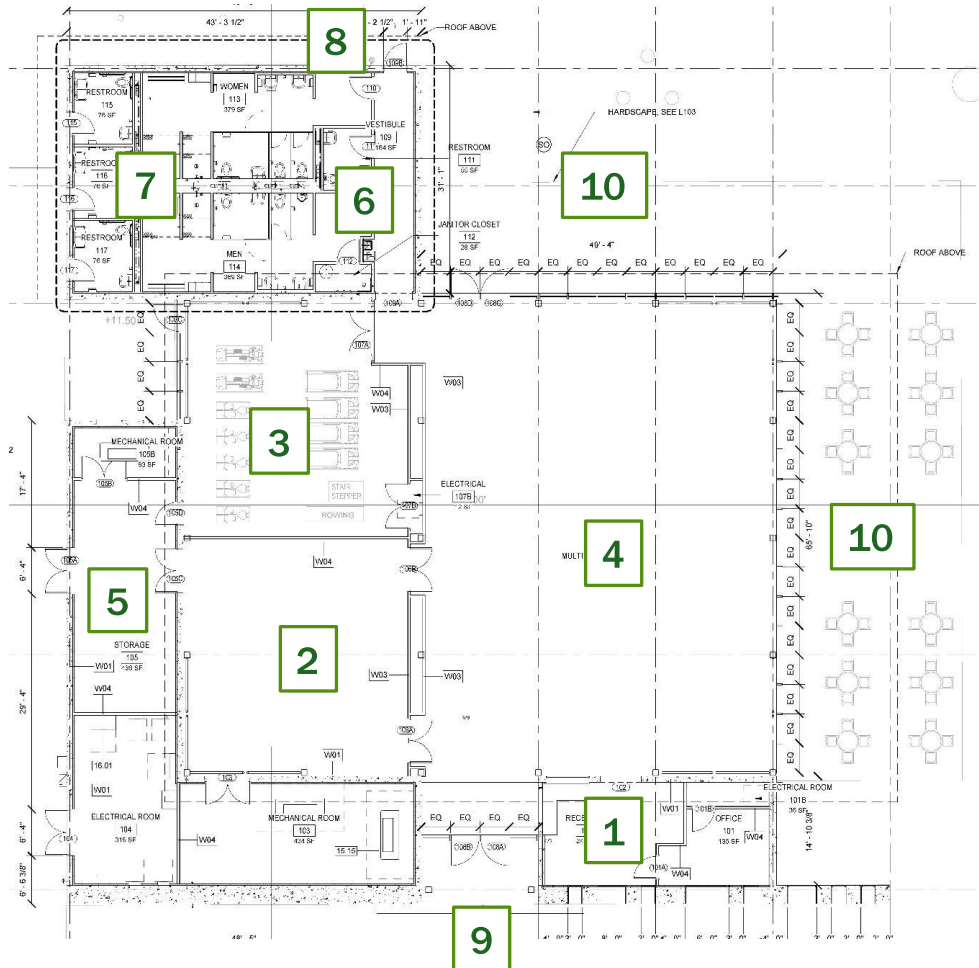


CURTIS + ROGERS DESIGN STUDIO

UPDATED SITE PLAN



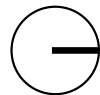
COMMUNITY CENTER



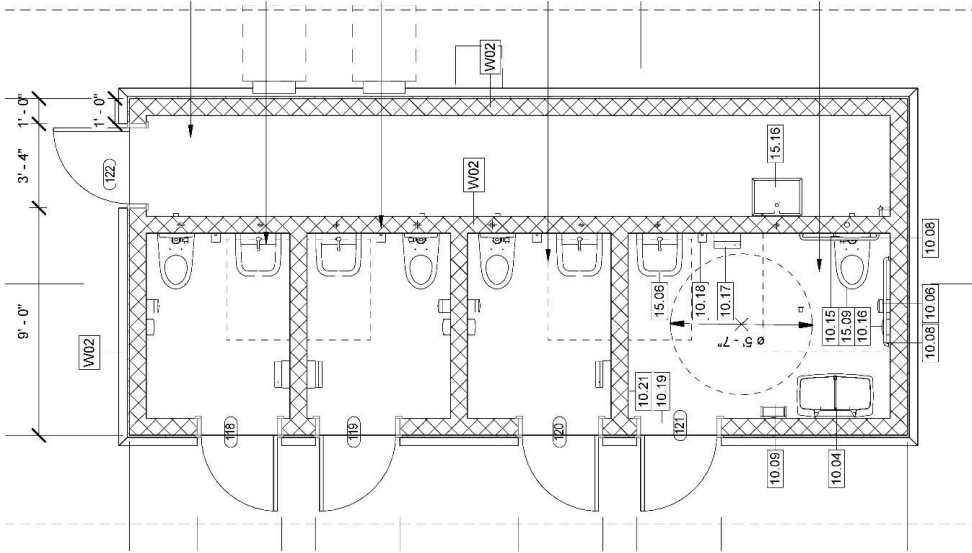
Major Program Spaces:

- 1 Entry / Lobby / Admin
- 2 Indoor Play
- 3 Fitness
- 4 Multi-Purpose Room
- 5 Support Spaces
- 6 Restrooms
- 7 Family Restrooms
- 8 Outdoor Handwashing
- 9 Covered Drop-off
- 10 Covered Porch

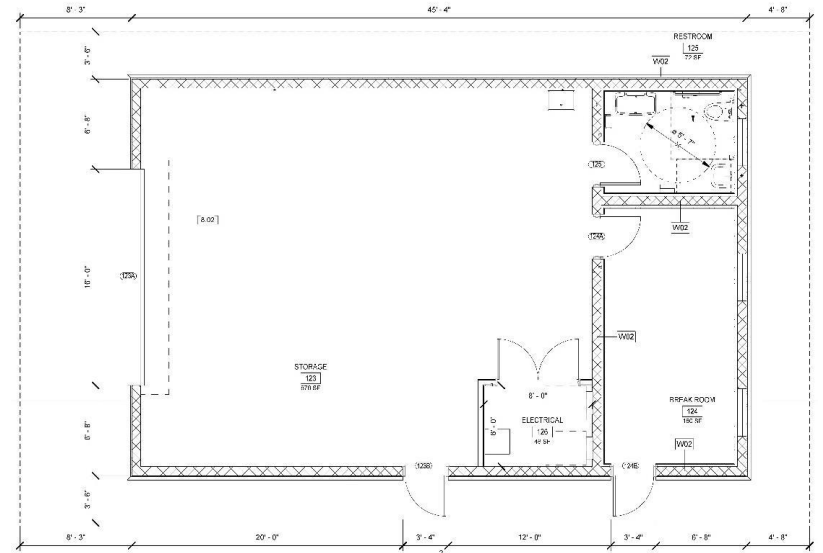
Community Center
Area: 10,645 sf



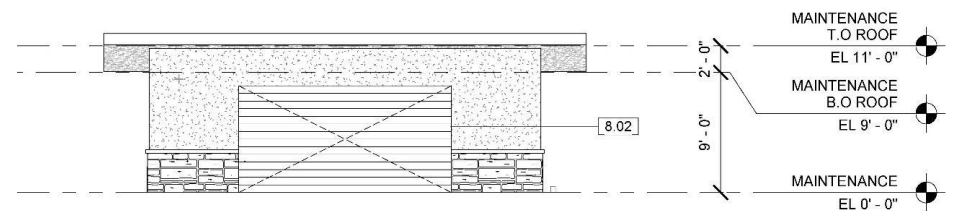
RESTROOM AND MAINTENANCE



Park Restrooms
Area: 426 sf



Maintenance Building
Area: 1,360 sf



COMMUNITY CENTER



COMMUNITY CENTER



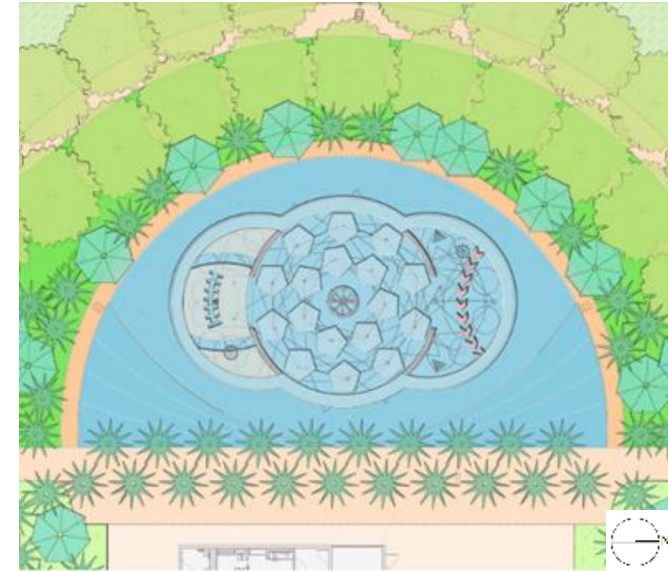
COMMUNITY CENTER



SPLASH PLAY AREA

ROLL ALONG

Sports : Adjacency to DRV PNK Stadium



PLAYGROUND

FLY HIGH

Flying: Adjacency to Ft. Lauderdale Executive Airport

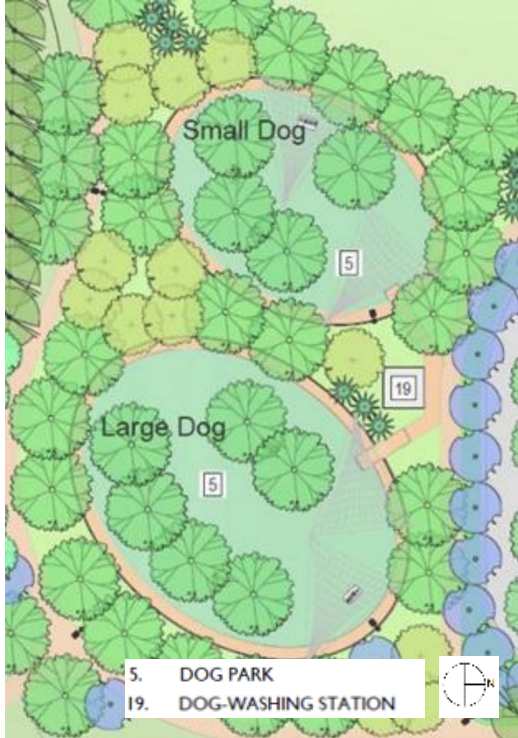


landscape structures
©2023 Landscape Structures. All Rights Reserved

REP SERVICES, INC.
Experts in Play & Outdoor Spaces
100 W. Jessup Avenue, Longwood, FL 32750
www.rep-services.com



DOG PARK AREA



FITNESS AREA



PICKLEBALL COURTS

Shaded Courts with Lighting



3. PRELIMINARY COST ESTIMATES



PRELIMINARY COST ESTIMATE

Park Element	Total Program Costs	Responsible Party
Erosion Control & Temporary Access	\$77,455	Miami Beckham
Clearing and Grubbing	\$161,867	Miami Beckham
Grading and Drainage	\$2,098,009	Miami Beckham
Playground	\$3,848,624	Miami Beckham
Dog Park	\$560,153	Miami Beckham
Multipurpose Playfield	\$1,807,071	Miami Beckham
Lighting	\$454,216	Miami Beckham
Sidewalks	\$1,300,126	Miami Beckham
Paved Parking Lot	\$879,907	Miami Beckham
Park Amenities	\$5,777,036	Miami Beckham
Subtotal	\$16,964,465	Miami Beckham
Community Center	\$3,814,855	City
Drop Off Area	\$50,623	City
Overflow Grass Parking Lot	\$906,960	City
Restroom	\$216,409	City
Maintenance Building	\$327,195	City
Water and Sewer	\$1,197,088	City
Splash Pad Area	\$1,775,425	City
Pickleball Courts	\$3,308,011	City
Fitness Station	\$1,414,082	City
Subtotal	\$13,010,649	City
Total Costs (Nearest \$1,000)	\$29,980,000	



4. NEXT STEPS



NEXT STEPS

- **100% Construction Drawings**
- **Development Review Committee Approval**
- **Final FAA Approval**
- **Permitting Dry-runs**
- **Bidding and Award**
- **Construction**



THANK YOU!

