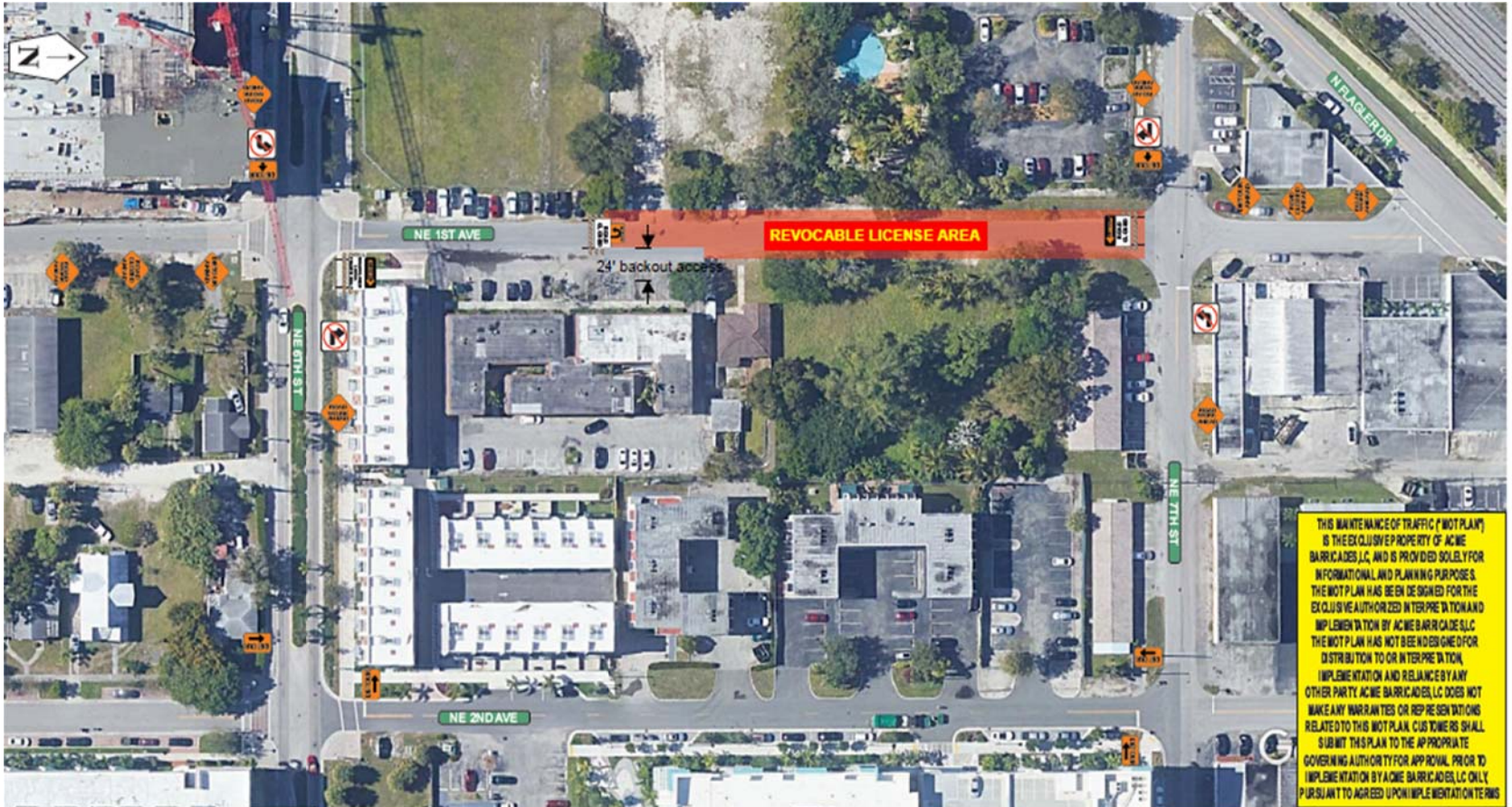


DETOUR PLAN - PHASE 1 (2 WEEKS)



PHASE 1

FDOT This Certifies that **Roosevelt M. Bynes III**
 Has Completed a Florida Department of Transportation Approved
 Temporary Traffic Control (TTC) Advanced (Refresher) Course.
 Date Expires: 02/12/2022 Certificate # 36715
 Instructor: Juan Morales FDOT Provider # 37

ATSSA
 Phone: 540-368-1701
 15 Riverside Parkway Ste. 100
 Fredericksburg, VA
 www.atssa.com
 donna.clark@atssa.com

ATSSA
 SAFER ROADS SAVE LIVES

MOT SHALL COMPLY WITH THE FDOT DESIGN STANDARDS AND THE MUTCD



OVERVIEW
 ROAD CLOSURE ON NE 1ST AVE
 BETWEEN NE 6TH ST & NE 7TH ST

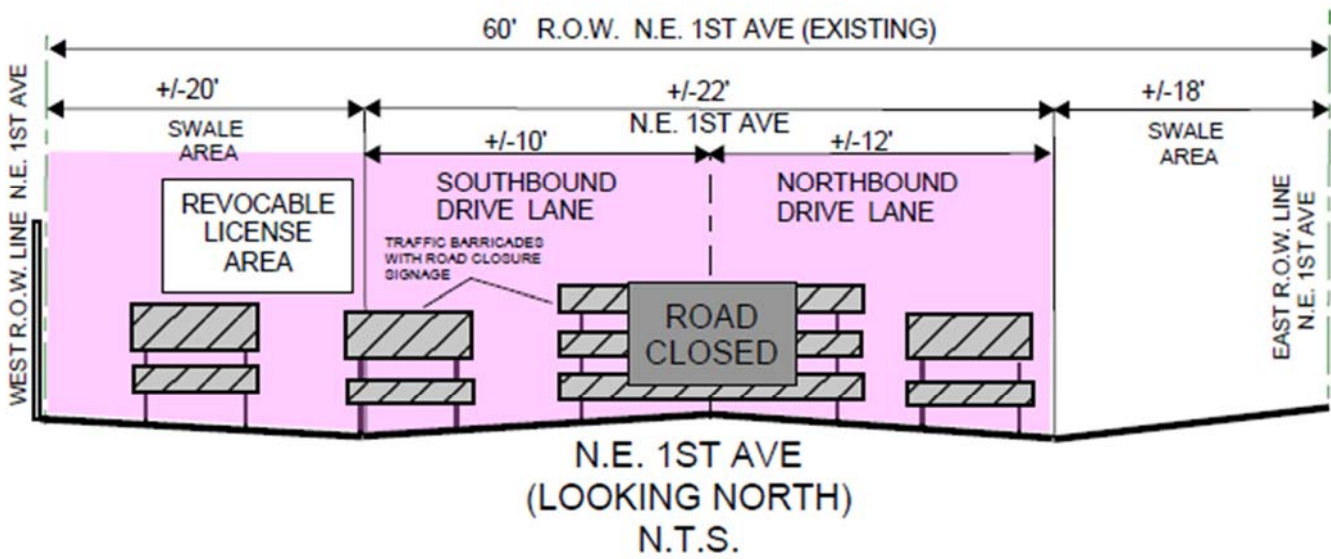
640 N ANDREWS AVE
 FORT LAUDERDALE, FLA

REFERENCE INDEX TA-20

NOTE:
 CONTRACTOR TO MAINTAIN
 ROAD CLOSURE ALSO ACCESS
 TO RESIDENTIAL DRIVEWAYS
 DURING WORK HOURS

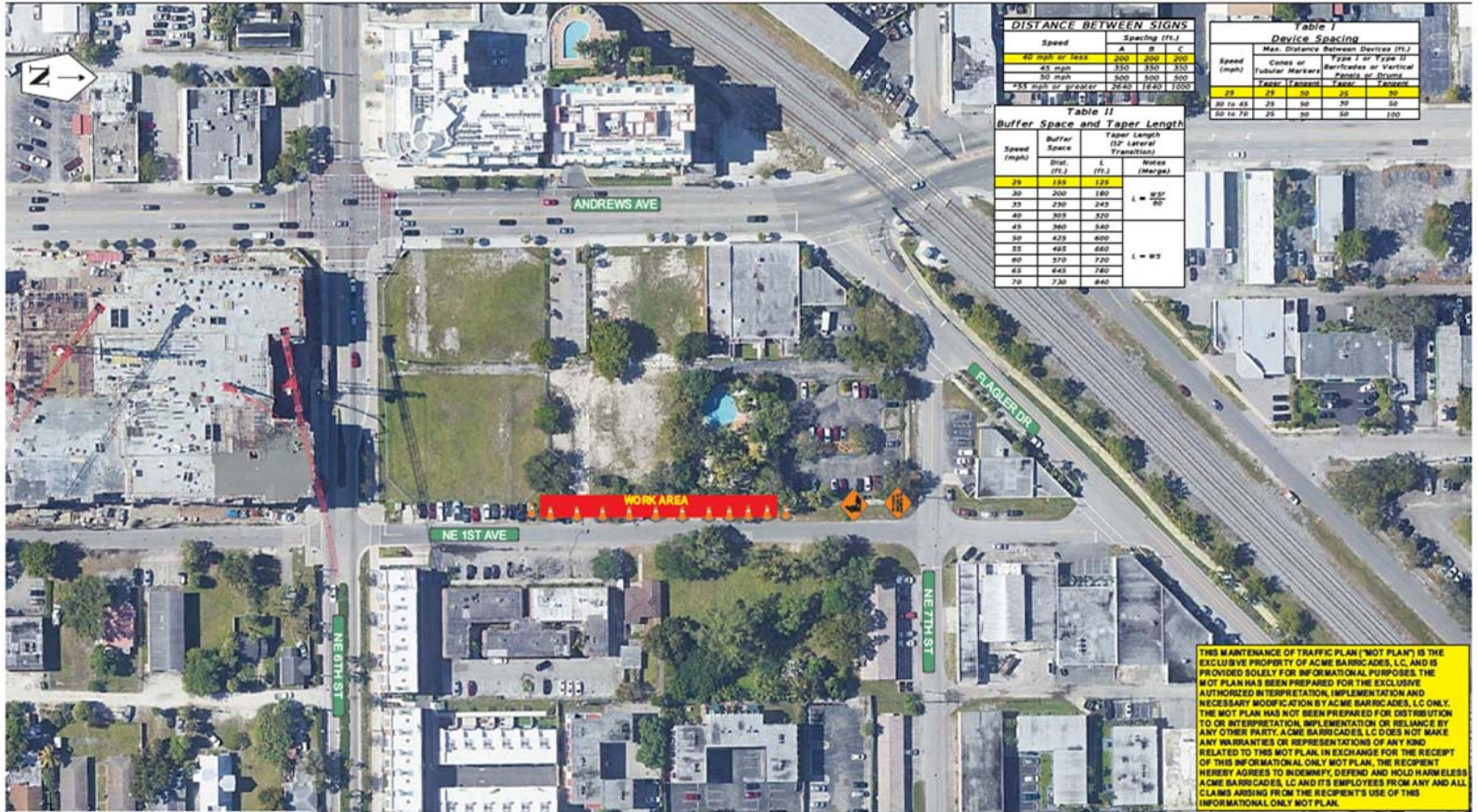


PHASE 1



TYPICAL SECTION – PHASE 1 (2 WEEKS)

DETOUR PLAN - PHASE 2 (14 MONTHS)



THIS MAINTENANCE OF TRAFFIC PLAN ("MOT PLAN") IS THE EXCLUSIVE PROPERTY OF ACME BARRICADES, L.C. AND IS PROVIDED SOLELY FOR INFORMATIONAL PURPOSES. THE MOT PLAN HAS BEEN PREPARED FOR THE EXCLUSIVE AUTHORIZED INTERPRETATION, IMPLEMENTATION AND NECESSARY MODIFICATION BY ACME BARRICADES, L.C. ONLY. THE MOT PLAN HAS NOT BEEN PREPARED FOR DISTRIBUTION TO OR INTERPRETATION, IMPLEMENTATION OR RELIANCE BY ANY OTHER PARTY. ACME BARRICADES, L.C. DOES NOT MAKE ANY WARRANTIES OR REPRESENTATIONS OF ANY KIND RELATED TO THIS MOT PLAN. IN EXCHANGE FOR THE RECEIPT OF THIS INFORMATIONAL ONLY MOT PLAN, THE RECIPIENT HEREBY AGREES TO INDEMNIFY, DEFEND AND HOLD HARMLESS ACME BARRICADES, L.C. AND ITS EMPLOYEES FROM ANY AND ALL CLAIMS ARISING FROM THE RECIPIENT'S USE OF THIS INFORMATIONAL ONLY MOT PLAN.

***MOT SHALL COMPLY WITH THE FDOT DESIGN STANDARDS AND THE MUTCD*
OVERVIEW REFERENCE INDEX 102-602**

**STANDARD SHOULDER CLOSURE
ON NE 1ST AVE FOR WORK OUTSIDE
OF THE RIGHT OF WAY SET-UP/
TAKE-DOWN FROM 9AM-5PM
DAYTIME OPERATION**

**NE 1ST AVE
FORT LAUDERDALE, FLA**

FDOT This certifies that
Roosevelt M. Bynes III
Has Completed a Florida Department of Transportation Approved
Temporary Traffic Control (TTC) Advanced (Refresher) Course.
Date Expires: 02/12/2022 Certificate # 38715
Instructor: Juan Morales FDOT Provider # 37

ATSSA
Phone: 540-388-1701
15 Riverside Parkway Ste 100
Fredericksburg, VA
www.atssa.com
donna.clark@atssa.com

ATSSA
SAFER ROADS SAVE LIVES



ANF GROUP, INC.
CONSTRUCTION • DEVELOPMENT

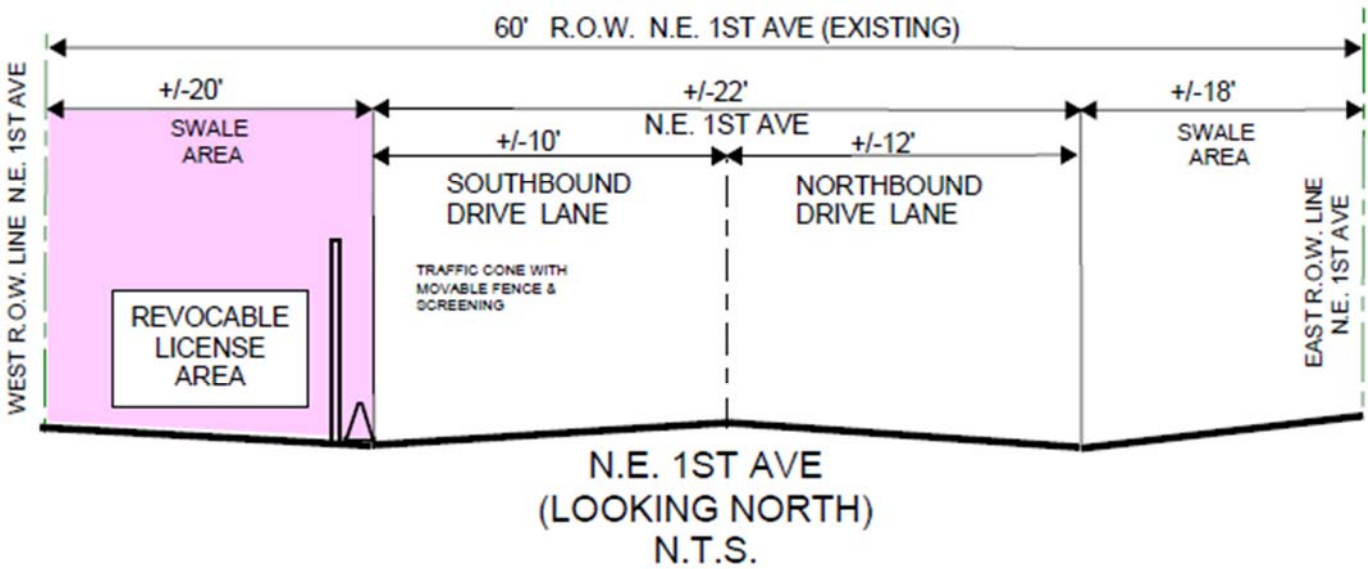
38 YEARS

Corporate Offices: 2700 Davie Road, Davie, FL 33314
Office: 954.693.9990 | Fax: 954.693.9911 | www.anfgroup.com

Let's get social
f i n t

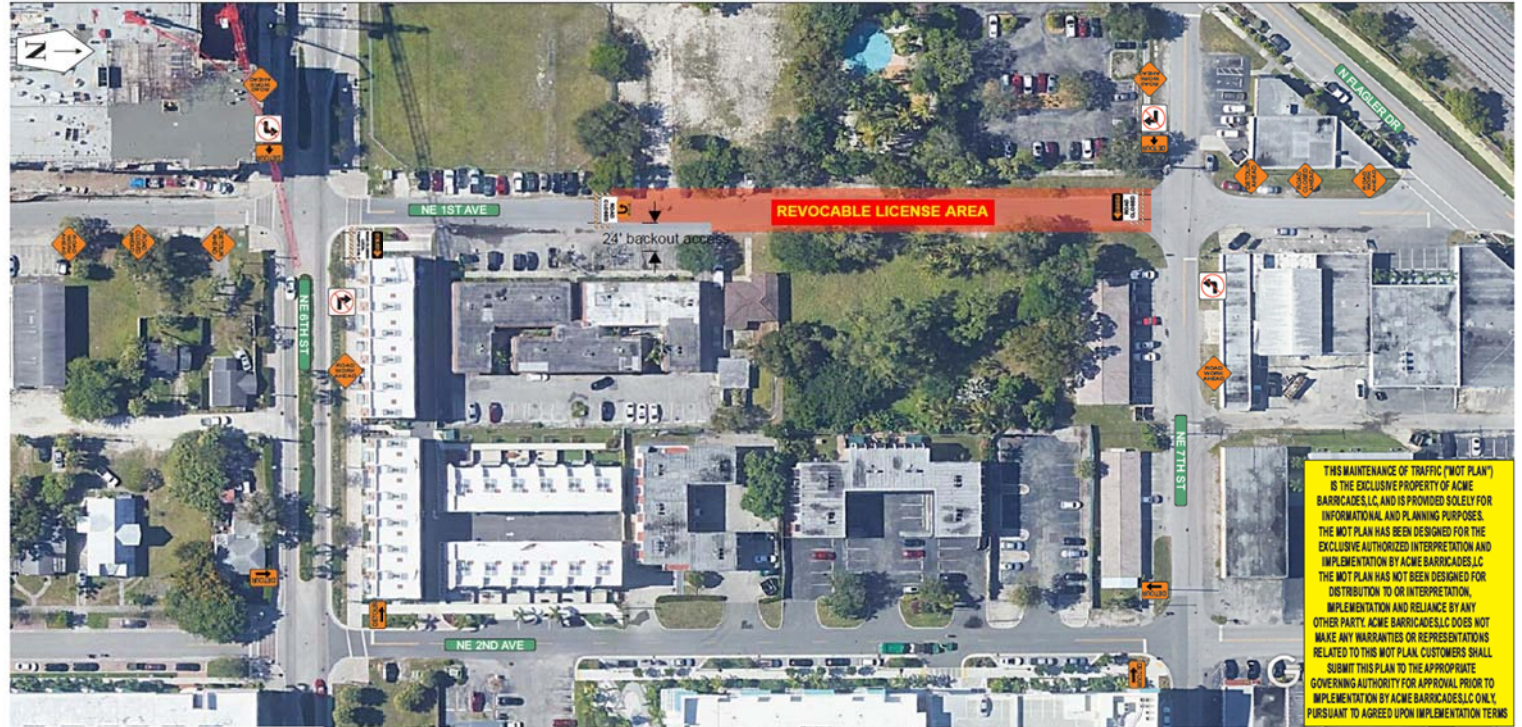
PHASE 2

PHASE 2



TYPICAL SECTION – PHASE 2 (14 MONTHS)

DETOUR PLAN - PHASE 3 (1 MONTH)



THIS MAINTENANCE OF TRAFFIC ("MOT PLAN") IS THE EXCLUSIVE PROPERTY OF ACME BARRICADES, LLC, AND IS PROVIDED SOLELY FOR INFORMATIONAL AND PLANNING PURPOSES. THE MOT PLAN HAS BEEN DESIGNED FOR THE EXCLUSIVE AUTHORIZED INTERPRETATION AND IMPLEMENTATION BY ACME BARRICADES, LLC. THE MOT PLAN HAS NOT BEEN DESIGNED FOR DISTRIBUTION TO OR INTERPRETATION, IMPLEMENTATION AND RELIANCE BY ANY OTHER PARTY. ACME BARRICADES, LLC DOES NOT MAKE ANY WARRANTIES OR REPRESENTATIONS RELATED TO THIS MOT PLAN. CUSTOMERS SHALL SUBMIT THIS PLAN TO THE APPROPRIATE GOVERNING AUTHORITY FOR APPROVAL PRIOR TO IMPLEMENTATION BY ACME BARRICADES, LLC ONLY, PURSUANT TO AGREED UPON IMPLEMENTATION TERMS.

MOT SHALL COMPLY WITH THE FDOT DESIGN STANDARDS AND THE MUTCD

FDOT This Certifies that **Roosevelt M. Bynes III**
 Has Completed a Florida Department of Transportation Approved Temporary Traffic Control (TTC) Advanced (Refresh) Course.
 Date Expires: 02/12/2022 Certificate # 36715
 Instructor: Juan Morales FDOT Provider # 37

ATSSA
 Phone: 540-368-1701
 15 Riverside Parkway Ste 100
 Fredericksburg, VA
 www.atssa.com
 donna.clark@atssa.com

ATSSA
 SAFER ROADS SAVE LIVES



640 N ANDREWS AVE
 FORT LAUDERDALE, FLA

OVERVIEW
 ROAD CLOSURE ON NE 1ST AVE
 BETWEEN NE 6TH ST & NE 7TH ST

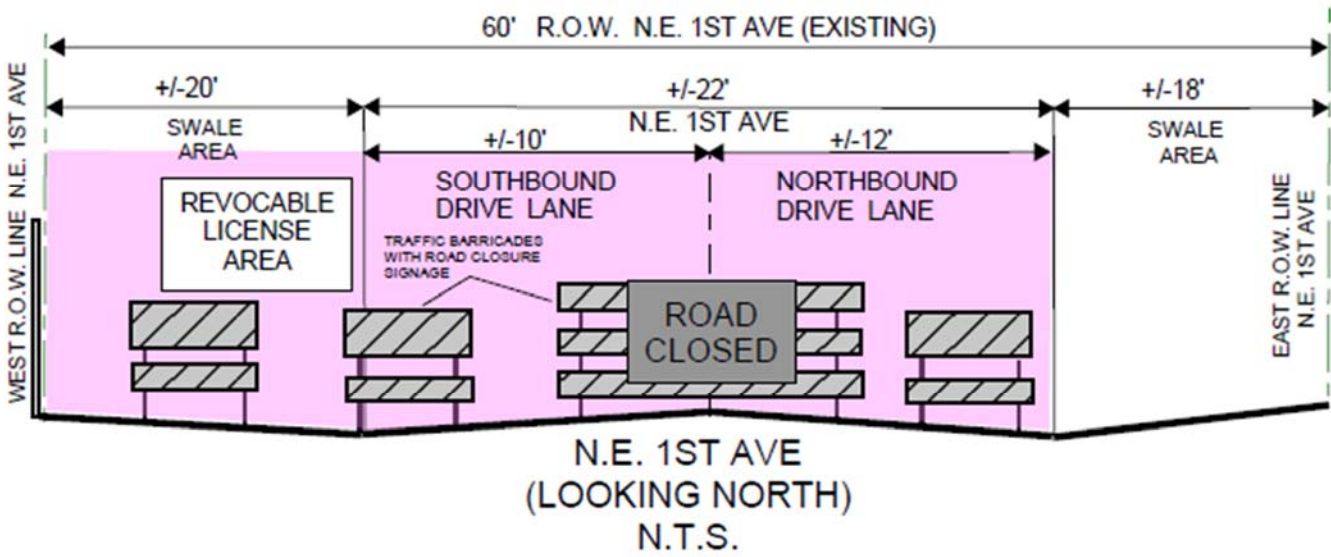
REFERENCE INDEX TA-20

NOTE:
 CONTRACTOR TO MAINTAIN
 ROAD CLOSURE ALSO ACCESS
 TO RESIDENTIAL DRIVEWAYS
 DURING WORK HOURS



PHASE 3

PHASE 3



TYPICAL SECTION – PHASE 3 (1 MONTH)