



305 south andrews ave. suite 301
fort lauderdale, fl 33301

T 954.463.6574

F 954.463.8412

www.ddaftl.org

April 10, 2013

Lee Feldman
City Manager
City of Fort Lauderdale
100 N. Andrews Avenue
Fort Lauderdale, FL 33301

RE: Wave Streetcar Assessment 4/2 City Commission Follows Ups

Dear Mr. Feldman: *Lee*

At the April 2nd City Commission Conference meeting, the DDA was asked to follow up on a few items in reference to the upcoming Wave local assessment to include: showing the properties that are within a ½ mile of the streetcar line, but do not fall within the South and Downtown Regional Activity Center (RAC), researching the capital funding plans of existing streetcar systems with extensions and showing the list of non-profits. Attached are these results.

Those properties that fall outside of the D-RAC and S-RAC are primarily single family homes that are not zoned to encourage future development, which is an important goal of the project.

The capital funding research of other streetcar systems reveals that the local share was a significant component to build the initial system since federal and state dollars were limited. For our system, significant federal and state contributions result in the local assessment being only 14% of total capital costs, which is significantly lower than other examples. For Portland's extension, they were able to take advantage of federal dollars to lessen the local burden, but still had a significant local contribution. In talking to each of these cities, the overarching theme for extensions was to try and make it as equitable as possible and in most cases, the community would volunteer to tax themselves because they believed in the system and its benefits.

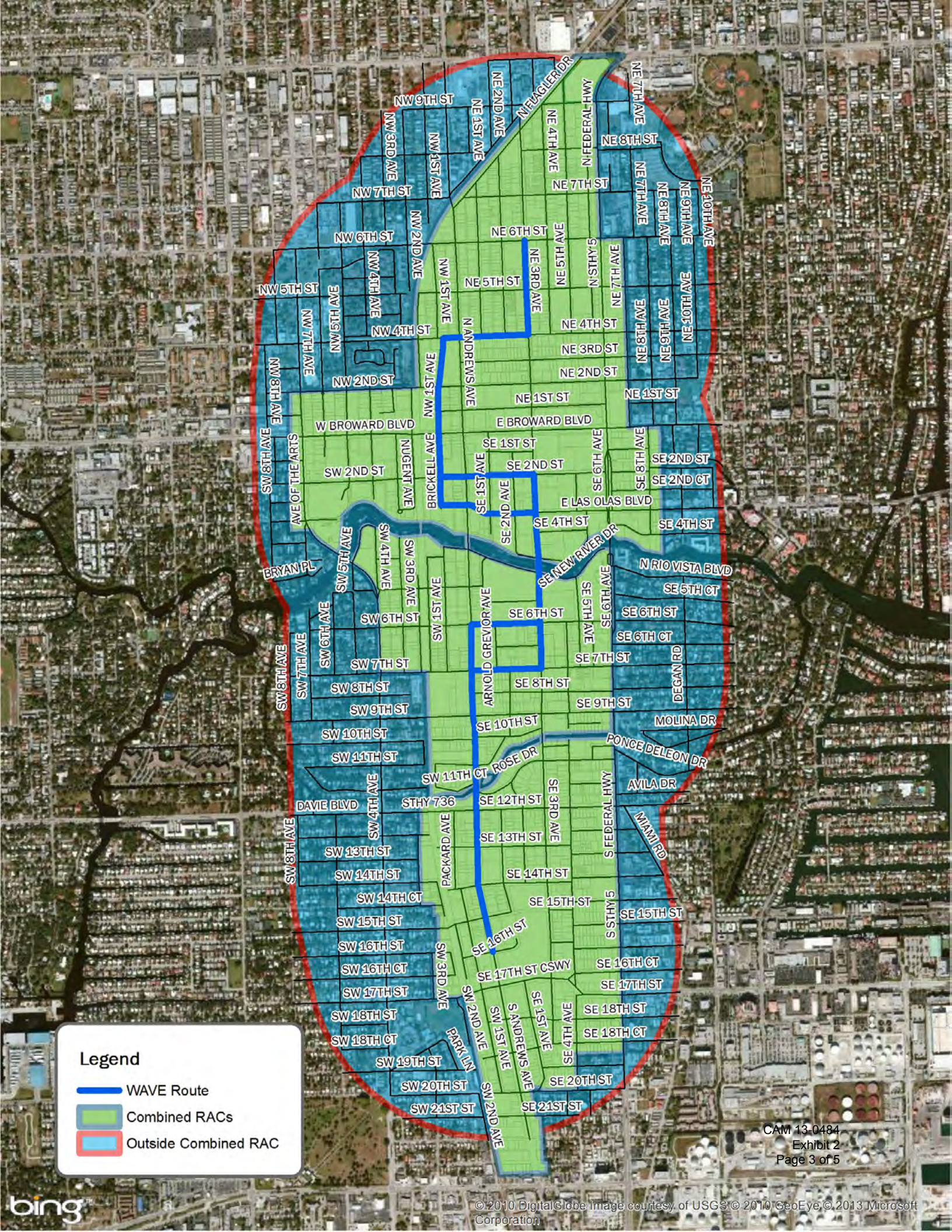
I hope you will see that we have structured the best, most defensible funding plan and assessment methodology for our community. I am available if you would like to discuss any additional follow up.

Sincerely,




[Handwritten Signature]
Chris Wren
Executive Director

CAM 13-0484
Exhibit 2
Page 1 of 5

Capital Funding Plans of Other Streetcar Systems with Extensions <i>(% of Assessment/Tax Indicated)</i>	
Portland, OR (Phase I - Opened in 2001) <i>Local:</i> Parking Meter Revenue Local Assessment/Tax MPO, Transit Agency and Local Funds <div style="text-align: right;">Total</div> <div style="text-align: right;">% of Assessment/Tax</div>	Amount \$28,600,000 \$34,300,000 \$25,800,000 \$88,700,000 39%
Portland, OR (Phase 2 - Opened in 2012) Federal State: Purchase of Vehicles <i>Local:</i> Local Assessment/Tax Regional Funds System Development Charge <div style="text-align: right;">Total</div> <div style="text-align: right;">% of Assessment/Tax</div>	\$75,356,832 \$20,000,000 \$43,182,000 \$3,622,673 \$6,111,327 \$148,272,832 29%
Seattle, WA (Phase 1 - Opened in Dec 2007) Federal & State <i>Local:</i> Local Assessment/Tax Joint development of the maintenance base: proceeds from the sale of the development rights City of Seattle: sale of surplus land in City <div style="text-align: right;">Total</div> <div style="text-align: right;">% of Assessment/Tax</div>	\$18,493,538 \$25,000,000 \$2,500,000 \$13,100,000 \$59,093,538 42%
Seattle, WA (Phase 2 - Scheduled to Open in 2014) Voter Approved Regional Transit Tax <div style="text-align: right;">Total</div> <div style="text-align: right;">% of Assessment/Tax</div>	\$135,000,000 \$135,000,000 100%



Legend

-  WAVE Route
-  Combined RACs
-  Outside Combined RAC

POTENTIAL EXEMPT PROPERTIES

PID	Owner_Name	DOR_Code	DOR Description	Original Property Class	Original Property Class Description	GSG_Category	Assessment Units	Exempt_Status	Assessment Amounts	Total
504203021370	FOUNDRY LOFTS LLC	00	VACANT RESIDENTIAL	NPL	Vacant Land	Land	0	Common Area	\$ -	
504203021390	403 BRICKELL LLC	00	VACANT RESIDENTIAL	NPL	Vacant Land	Land	0	Common Area	\$ -	
504203021600	AVENUE LOFTS CONDO ASSOC INC	07	MISC RESIDENTIAL	NPL	Vacant Land	Land	0	Common Area	\$ -	
504203290010	EAST VILLAGE HOA INC	00	VACANT RESIDENTIAL	NPL	Vacant Land	Land	0	Common Area	\$ -	
504210100010	VILLA TUSCANY HOMOWNERS ASSOC	00	VACANT RESIDENTIAL	NPL	Vacant Land	Land	0	Common Area	\$ -	
504210BA0002	MONTECITO NEW RIVER LLC	00	VACANT RESIDENTIAL	NPL	Vacant Land	Land	0	Common Area	\$ -	\$ -
494234061820	HELPING ABUSED NEGLECTED	12	MIXED USE STORE/OFFICE	NP	Improved Commercial (Non-residential)	Commercial	4,862	Exempt from Fire Assessment	\$ 437.58	
494234076180	FT LAUDERDALE CHILDRENS	00	VACANT RESIDENTIAL	NPL	Vacant Land	Land	3,187	Exempt from Fire Assessment	\$ 95.61	
494234076190	FT LAUDERDALE CHILDRENS	28	MOBILE HOME PARKS/PK LOTS	NPL	Vacant Land	Parking Lot	6,375	Exempt from Fire Assessment	\$ 191.25	
494234076192	FT LAUDERDALE CHILDRENS	28	MOBILE HOME PARKS/PK LOTS	NPL	Vacant Land	Parking Lot	6,375	Exempt from Fire Assessment	\$ 191.25	
494234150031	FT LAUDERDALE CHILDRENS	10	VACANT COMMERCIAL	NPL	Vacant Land	Land	6,375	Exempt from Fire Assessment	\$ 191.25	
494234150040	FT LAUDERDALE CHILDRENS	10	VACANT COMMERCIAL	NPL	Vacant Land	Land	9,563	Exempt from Fire Assessment	\$ 286.89	
504203020280	GREATER FORT LAUDERDALE	18	OFFICE NON-PROF 2+ STORY	NP	Improved Commercial (Non-residential)	Commercial	17,499	Exempt from Fire Assessment	\$ 1,574.91	
504203021780	DAN MARINO FOUNDATION INC	00	VACANT RESIDENTIAL	NPL	Vacant Land	Land	5,625	Exempt from Fire Assessment	\$ 168.75	
504203021790	DAN MARINO FOUNDATION INC	28	MOBILE HOME PARKS/PK LOTS	NPL	Vacant Land	Parking Lot	11,250	Exempt from Fire Assessment	\$ 337.50	
504203090050	RELIANCE-PROGRESSO	10	VACANT COMMERCIAL	NPL	Vacant Land	Land	22,492	Exempt from Fire Assessment	\$ 674.76	
504203270040	FIRST BAPTIST CHURCH	28	MOBILE HOME PARKS/PK LOTS	NPL	Vacant Land	Parking Lot	87,388	Exempt from Fire Assessment	\$ 2,621.64	
504203270041	FIRST BAPTIST CHURCH	28	MOBILE HOME PARKS/PK LOTS	NPL	Vacant Land	Parking Lot	42,651	Exempt from Fire Assessment	\$ 1,279.53	
504210012440	PROJECT DISCOVERY INC	28	MOBILE HOME PARKS/PK LOTS	NPL	Vacant Land	Parking Lot	29,415	Exempt from Fire Assessment	\$ 882.45	
504210012680	LEISER CENTER LLC	18	OFFICE NON-PROF 2+ STORY	NP	Improved Commercial (Non-residential)	Commercial	9,982	Exempt from Fire Assessment	\$ 898.38	
504210012700	LEISER CENTER LLC	28	MOBILE HOME PARKS/PK LOTS	NPL	Vacant Land	Parking Lot	7,250	Exempt from Fire Assessment	\$ 217.50	
504210110240	FIRST BAPTIST CHURCH	18	OFFICE NON-PROF 2+ STORY	NP	Improved Commercial (Non-residential)	Commercial	2,710	Exempt from Fire Assessment	\$ 243.90	
504210110690	FIRST BAPTIST CHURCH	28	MOBILE HOME PARKS/PK LOTS	NPL	Vacant Land	Parking Lot	5,720	Exempt from Fire Assessment	\$ 171.60	
504210110710	FIRST BAPTIST CHURCH	18	OFFICE NON-PROF 2+ STORY	NP	Improved Commercial (Non-residential)	Commercial	22,719	Exempt from Fire Assessment	\$ 2,044.71	
504210121370	FIRST BAPTIST CHURCH	28	MOBILE HOME PARKS/PK LOTS	NPL	Vacant Land	Parking Lot	7,501	Exempt from Fire Assessment	\$ 225.03	
504210121380	FIRST BAPTIST CHURCH	28	MOBILE HOME PARKS/PK LOTS	NPL	Vacant Land	Parking Lot	7,497	Exempt from Fire Assessment	\$ 224.91	
504210210240	HABITAT FOR HUMANITY OF	28	MOBILE HOME PARKS/PK LOTS	NPL	Vacant Land	Parking Lot	374	Exempt from Fire Assessment	\$ 11.22	
504210210250	HABITAT FOR HUMANITY OF	28	MOBILE HOME PARKS/PK LOTS	NPL	Vacant Land	Parking Lot	2,566	Exempt from Fire Assessment	\$ 76.98	
504210210270	HABITAT FOR HUMANITY OF	28	MOBILE HOME PARKS/PK LOTS	NPL	Vacant Land	Parking Lot	880	Exempt from Fire Assessment	\$ 26.40	
504210210280	HABITAT FOR HUMANITY OF BROWARD	48	WAREHOUSING	NP	Improved Commercial (Non-residential)	Commercial	7,949	Exempt from Fire Assessment	\$ 715.41	
504210210300	HABITAT FOR HUMANITY OF BROWARD	28	MOBILE HOME PARKS/PK LOTS	NPL	Vacant Land	Parking Lot	6,750	Exempt from Fire Assessment	\$ 202.50	
504210210430	HABITAT FOR HUMANITY OF	48	WAREHOUSING	NP	Improved Commercial (Non-residential)	Commercial	19,841	Exempt from Fire Assessment	\$ 1,785.69	
504210210540	PERFORMING ARTS CENTER AUTHORITY	27	AUTO SALES/SERVICE/RENTAL	NP	Improved Commercial (Non-residential)	Commercial	6,326	Exempt from Fire Assessment	\$ 569.34	
504210710160	JAMES RANDI EDUCATIONAL	17	OFFICE NON-PROF 1 STORY	NP	Improved Commercial (Non-residential)	Commercial	4,591	Exempt from Fire Assessment	\$ 413.19	
504210710360	BROWARD COUNTY BAR ASSN INC	17	OFFICE NON-PROF 1 STORY	NP	Improved Commercial (Non-residential)	Commercial	5,567	Exempt from Fire Assessment	\$ 501.03	
504210760010	FIRST CHURCH OF CHRIST SCIENTIST	28	MOBILE HOME PARKS/PK LOTS	NPL	Vacant Land	Parking Lot	25,464	Exempt from Fire Assessment	\$ 763.92	
504215011760	TRINITY LUTHERAN CHURCH	01	SINGLE FAMILY IMPROVED	NPR	Residential	Residential	1	Exempt from Fire Assessment	\$ 99.00	
504215017731	MARINE INDUSTRIES ASSOCIATION	17	OFFICE NON-PROF 1 STORY	NP	Improved Commercial (Non-residential)	Commercial	2,811	Exempt from Fire Assessment	\$ 252.99	
504215100410	THE CHARTER SCHOOLS	28	MOBILE HOME PARKS/PK LOTS	NPL	Vacant Land	Parking Lot	6,250	Exempt from Fire Assessment	\$ 187.50	
504215101060	UNITED WAY OF BROWARD COUNTY	18	OFFICE NON-PROF 2+ STORY	NP	Improved Commercial (Non-residential)	Commercial	18,555	Exempt from Fire Assessment	\$ 1,669.95	
504215102310	FORT LAUDERDALE ANTIQUE	48	WAREHOUSING	NP	Improved Commercial (Non-residential)	Commercial	21,117	Exempt from Fire Assessment	\$ 1,900.53	
504215102990	BROWARD HOUSE INC	17	OFFICE NON-PROF 1 STORY	NP	Improved Commercial (Non-residential)	Commercial	5,553	Exempt from Fire Assessment	\$ 499.77	
504210380013	PERFORMING ARTS CENTER AUTHORITY	80	UNDEFINED	NPL	Vacant Land	Parking Lot	6,554	Exempt from Fire Assessment	\$ 196.62	
504215103050	BOUGAINVILLE HOUSE INC	17	OFFICE NON-PROF 1 STORY	NP	Improved Commercial (Non-residential)	Commercial	1,508	Exempt from Fire Assessment	\$ 135.72	
504215103070	BOUGAINVILLE HOUSE INC	17	OFFICE NON-PROF 1 STORY	NP	Improved Commercial (Non-residential)	Commercial	988	Exempt from Fire Assessment	\$ 88.92	
504215104390	SECOND CHANCE SOCIETY INC	17	OFFICE NON-PROF 1 STORY	NP	Improved Commercial (Non-residential)	Commercial	1,814	Exempt from Fire Assessment	\$ 163.26	
504215105080	AMERICAN LUNG ASSOCIATION	17	OFFICE NON-PROF 1 STORY	NP	Improved Commercial (Non-residential)	Commercial	5,106	Exempt from Fire Assessment	\$ 459.54	
504210090010	STRANAHAN HOUSE INC	89	MUNICIPAL NOT PARKS	NP	Improved Non-Profit	Non-Profit Improved	3,403	Exempt from Fire Assessment	\$ 306.27	
504210880010	PERFORMING ARTS CENTER AUTHORITY	86	COUNTY	NP	Improved Non-Profit	Non-Profit Improved	207,327	Exempt from Fire Assessment	\$ 18,659.43	
504215320010	NORTH BROWARD HOSPITAL	73	PRIVATE OWNED HOSPITALS	NBHOSP	Improved N. Broward Hospital	Commercial	28,876	Exempt from Fire Assessment	\$ 2,598.84	\$ 45,243.42
504210010020	BROWARD COUNTY	28	MOBILE HOME PARKS/PK LOTS	BCL	Broward County Land	Govt Parking Lot	6,639	Government	\$ -	
504210010030	BROWARD COUNTY	28	MOBILE HOME PARKS/PK LOTS	BCL	Broward County Land	Govt Parking Lot	6,750	Government	\$ -	
504210010040	BROWARD COUNTY	28	MOBILE HOME PARKS/PK LOTS	BCL	Broward County Land	Govt Parking Lot	6,500	Government	\$ -	
504210010080	CITY OF FORT LAUDERDALE	89	MUNICIPAL NOT PARKS	FTL	Improved Ft. Lauderdale	Government Improved	19,015	Government	\$ -	
504210010120	CITY OF FORT LAUDERDALE	83	PUBLIC COUNTY SCHOOLS	FTL	Improved Ft. Lauderdale	Government Improved	600	Government	\$ -	
504210011530	TIITF/DEPT OF GEN SERVICES	87	STATE	FLL	State of Florida Land	Government Land	7,600	Government	\$ -	
504210011540	TIITF/DEPT OF GEN SERVICES	87	STATE	FLL	State of Florida Land	Government Land	15,200	Government	\$ -	
504210011550	TIITF/DEPT OF GEN SERVICES	87	STATE	FLL	State of Florida Land	Government Land	7,600	Government	\$ -	
504210011601	TIITF/STATE OF FLORIDA	28	MOBILE HOME PARKS/PK LOTS	FLL	State of Florida Land	Govt Parking Lot	1	Government	\$ -	
504210011722	TIITF/HRS	86	COUNTY	FL	Improved State of Florida	Government Improved	74,979	Government	\$ -	
504210011730	BROWARD COUNTY	86	COUNTY	BC	Improved Broward County	Government Improved	26,553	Government	\$ -	
504210015830	CITY OF FORT LAUDERDALE	89	MUNICIPAL NOT PARKS	FTL	Improved Ft. Lauderdale	Government Improved	17,322	Government	\$ -	
504210020010	BROWARD COUNTY	86	COUNTY	BC	Improved Broward County	Government Improved	87,474	Government	\$ -	
504210020050	BROWARD COUNTY	87	STATE	BCL	Broward County Land	Government Land	70,927	Government	\$ -	
504210020060	BROWARD COUNTY	86	COUNTY	BC	Improved Broward County	Government Improved	595	Government	\$ -	
504210110410	CITY OF FORT LAUDERDALE	89	MUNICIPAL NOT PARKS	FTL	Improved Ft. Lauderdale	Government Improved	15,085	Government	\$ -	
504210111010	UNITED STATES OF AMERICA	88	FEDERAL	USA	Improved Federal Government Property	Government Improved	307,193	Government	\$ -	

POTENTIAL EXEMPT PROPERTIES

PID	Owner_Name	DOR_Code	DOR Description	Original Property Class	Original Property Class Description	GSG_Category	Assessment Units	Exempt_Status	Assessment Amounts	Total
504210140030	CITY OF FORT LAUDERDALE	89	MUNICIPAL NOT PARKS	FTL	Improved Ft. Lauderdale	Government Improved	106,074	Government	\$ -	
504210150010	CITY OF FORT LAUDERDALE	89	MUNICIPAL NOT PARKS	FTL	Improved Ft. Lauderdale	Government Improved	29,191	Government	\$ -	
504210210340	CITY OF FORT LAUDERDALE	89	MUNICIPAL NOT PARKS	FTL	Improved Ft. Lauderdale	Government Improved	32,383	Government	\$ -	
504210210480	FORT LAUDERDALE DOWNTOWN	28	MOBILE HOME PARKS/PK LOTS	DDAL	DDA Land	Govt Parking Lot	4,750	Government	\$ -	
504210210490	FORT LAUDERDALE DOWNTOWN	28	MOBILE HOME PARKS/PK LOTS	DDAL	DDA Land	Govt Parking Lot	10,848	Government	\$ -	
504210210500	FORT LAUDERDALE DOWNTOWN	28	MOBILE HOME PARKS/PK LOTS	DDAL	DDA Land	Govt Parking Lot	2,375	Government	\$ -	
504210210510	FORT LAUDERDALE DOWNTOWN	28	MOBILE HOME PARKS/PK LOTS	DDAL	DDA Land	Govt Parking Lot	11,985	Government	\$ -	
504210210570	FORT LAUDERDALE DOWNTOWN	28	MOBILE HOME PARKS/PK LOTS	DDAL	DDA Land	Govt Parking Lot	6,370	Government	\$ -	
504210210572	FORT LAUDERDALE DOWNTOWN	28	MOBILE HOME PARKS/PK LOTS	DDAL	DDA Land	Govt Parking Lot	9,100	Government	\$ -	
504210210580	FORT LAUDERDALE DOWNTOWN	28	MOBILE HOME PARKS/PK LOTS	DDAL	DDA Land	Govt Parking Lot	17,930	Government	\$ -	
504210210590	FORT LAUDERDALE DOWNTOWN	28	MOBILE HOME PARKS/PK LOTS	DDAL	DDA Land	Govt Parking Lot	8,000	Government	\$ -	
504210210600	FORT LAUDERDALE DOWNTOWN	28	MOBILE HOME PARKS/PK LOTS	DDAL	DDA Land	Govt Parking Lot	10,000	Government	\$ -	
504210210610	FORT LAUDERDALE DOWNTOWN	28	MOBILE HOME PARKS/PK LOTS	DDAL	DDA Land	Govt Parking Lot	6,000	Government	\$ -	
504210230010	BROWARD COUNTY	86	COUNTY	BC	Improved Broward County	Government Improved	263,602	Government	\$ -	
504210330010	BROWARD COLLEGE FOUNDATION INC	83	PUBLIC COUNTY SCHOOLS	BCC	Improved Broward State College (BCC)	Government Improved	78,186	Government	\$ -	
504210330030	BROWARD COLLEGE FOUNDATION INC	83	PUBLIC COUNTY SCHOOLS	BCCCL	Broward State College (BCC)	Government Land	6,250	Government	\$ -	
504210330040	BROWARD COLLEGE FOUNDATION INC	86	COUNTY	BCCL	Broward State College (BCC)	Government Land	7,516	Government	\$ -	
504210330150	CITY OF FORT LAUDERDALE	89	MUNICIPAL NOT PARKS	FTL	Improved Ft. Lauderdale	Government Improved	353,193	Government	\$ -	
504210330190	BROWARD COLLEGE FOUNDATION INC	84	COLLEGES	BCC	Improved Broward State College (BCC)	Government Improved	101,585	Government	\$ -	
504210330210	BROWARD COLLEGE FOUNDATION INC	84	COLLEGES	BCC	Improved Broward State College (BCC)	Government Improved	3,328	Government	\$ -	
504210380030	CITY OF FORT LAUDERDALE	89	MUNICIPAL NOT PARKS	FTL	Improved Ft. Lauderdale	Government Improved	3,122	Government	\$ -	
504210850010	BROWARD COUNTY	86	COUNTY	BC	Improved Broward County	Government Improved	1,014,660	Government	\$ -	
504210910020	CITY OF FORT LAUDERDALE	89	MUNICIPAL NOT PARKS	FTL	Improved Ft. Lauderdale	Government Improved	1,770	Government	\$ -	
504210960010	TIITF/STATE OF FLORIDA	86	COUNTY	FL	Improved State of Florida	Government Improved	147,363	Government	\$ -	\$ -
494234062220	THE LITTLE SCHOOLHOUSE INC	72	PRIVATE SCHOOLS & COLLEGE	NP	Improved Non-Profit	Non-Profit Improved	3,340	Institutional/Tax Exempt	\$ 300.60	
494234075460	HOUSE OF HOPE INC	74	HOMES FOR THE AGED	NP	Improved Non-Profit	Non-Profit Improved	3,111	Institutional/Tax Exempt	\$ 279.99	
494234076200	FT LAUDERDALE CHILDRENS	70	VACANT INSTITUTIONAL	NPL	Non-profit Land	Non-Profit Land	3,187	Institutional/Tax Exempt	\$ 95.61	
494234150060	LIGHTHOUSE OF BROWARD COUNTY	72	PRIVATE SCHOOLS & COLLEGE	NP	Improved Non-Profit	Non-Profit Improved	11,125	Institutional/Tax Exempt	\$ 1,001.25	
504203022080	FIRST EVANGELICAL LUTHERAN	71	CHURCHES	NP	Improved Non-Profit	Non-Profit Improved	18,062	Institutional/Tax Exempt	\$ 1,625.58	
504203030390	CENTENNIAL HOLDINGS	75	ORPHANAGES	NP	Improved Non-Profit	Non-Profit Improved	15,407	Institutional/Tax Exempt	\$ 1,386.63	
504203270010	FIRST BAPTIST CHURCH	71	CHURCHES	NP	Improved Non-Profit	Non-Profit Improved	46,403	Institutional/Tax Exempt	\$ 4,176.27	
504203270020	FIRST BAPTIST CHURCH	71	CHURCHES	NP	Improved Non-Profit	Non-Profit Improved	97,419	Institutional/Tax Exempt	\$ 8,767.71	
504203270030	FIRST BAPTIST CHURCH	71	CHURCHES	NP	Improved Non-Profit	Non-Profit Improved	48,445	Institutional/Tax Exempt	\$ 4,360.05	
504210013090	NOVA SOUTHEASTERN UNIVERSITY INC	79	CULTURAL ORG, FACILITIES	NP	Improved Non-Profit	Non-Profit Improved	73,739	Institutional/Tax Exempt	\$ 6,636.51	
504210050010	FIRST UNITED METHODIST CHURCH	71	CHURCHES	NP	Improved Non-Profit	Non-Profit Improved	45,403	Institutional/Tax Exempt	\$ 4,086.27	
504210200010	PRIDE OF FORT LAUDERDALE	77	CLUBS, LODGES, UNION HALLS	NP	Improved Non-Profit	Non-Profit Improved	11,122	Institutional/Tax Exempt	\$ 1,000.98	
504210230250	FT LAUDERDALE WOMANS CLUB	77	CLUBS, LODGES, UNION HALLS	NP	Improved Non-Profit	Non-Profit Improved	3,321	Institutional/Tax Exempt	\$ 298.89	
504210270240	FREE BETHLEHEM BAPTIST CHURCH	71	CHURCHES	NP	Improved Non-Profit	Non-Profit Improved	7,118	Institutional/Tax Exempt	\$ 640.62	
504210280950	8TH STREET MISSION INC	71	CHURCHES	NP	Improved Non-Profit	Non-Profit Improved	6,668	Institutional/Tax Exempt	\$ 600.12	
504210710310	GILDAS CLUB OF SOUTH FL INC	77	CLUBS, LODGES, UNION HALLS	NP	Improved Non-Profit	Non-Profit Improved	4,235	Institutional/Tax Exempt	\$ 381.15	
504211110260	THE JUNIOR LEAGUE OF	77	CLUBS, LODGES, UNION HALLS	NP	Improved Non-Profit	Non-Profit Improved	1,452	Institutional/Tax Exempt	\$ 130.68	
504215011770	TRINITY LUTHERAN CHURCH	72	PRIVATE SCHOOLS & COLLEGE	NP	Improved Non-Profit	Non-Profit Improved	9,432	Institutional/Tax Exempt	\$ 848.88	
504215020010	FIRST CHURCH OF CHRIST SCIENTIST	71	CHURCHES	NP	Improved Non-Profit	Non-Profit Improved	12,002	Institutional/Tax Exempt	\$ 1,080.18	
504215100420	THE CHARTER SCHOOLS	72	PRIVATE SCHOOLS & COLLEGE	NP	Improved Non-Profit	Non-Profit Improved	3,016	Institutional/Tax Exempt	\$ 271.44	
504215100430	CHARTER HOLDINGS FOUNDATION INC	72	PRIVATE SCHOOLS & COLLEGE	NP	Improved Non-Profit	Non-Profit Improved	2,209	Institutional/Tax Exempt	\$ 198.81	
504215100490	FIRST CHRISTIAN CHURCH OF	72	PRIVATE SCHOOLS & COLLEGE	NP	Improved Non-Profit	Non-Profit Improved	2,076	Institutional/Tax Exempt	\$ 186.84	
504215100530	FIRST CHRISTIAN CHURCH OF	72	PRIVATE SCHOOLS & COLLEGE	NP	Improved Non-Profit	Non-Profit Improved	950	Institutional/Tax Exempt	\$ 85.50	
504215100570	FIRST CHRISTIAN CHURCH OF	71	CHURCHES	NP	Improved Non-Profit	Non-Profit Improved	25,621	Institutional/Tax Exempt	\$ 2,305.89	
504215103060	BOUGAINVILLEA HOUSE INC	74	HOMES FOR THE AGED	NP	Improved Non-Profit	Non-Profit Improved	1,120	Institutional/Tax Exempt	\$ 100.80	
504215103680	DORIC LODGE NO 140	77	CLUBS, LODGES, UNION HALLS	NP	Improved Non-Profit	Non-Profit Improved	4,157	Institutional/Tax Exempt	\$ 374.13	
504215104060	BROWARD HOUSE INC	73	PRIVATE OWNED HOSPITALS	NP	Improved Non-Profit	Non-Profit Improved	1,613	Institutional/Tax Exempt	\$ 145.17	
504215104140	BROWARD HOUSE INC	73	PRIVATE OWNED HOSPITALS	NP	Improved Non-Profit	Non-Profit Improved	18,311	Institutional/Tax Exempt	\$ 1,647.99	
504215104140	BROWARD HOUSE INC	73	PRIVATE OWNED HOSPITALS	NPR	Improved Non-Profit	Residential Non-Profit	21	Institutional/Tax Exempt	\$ 2,079.00	
504215190840	TRINITY LUTHERAN CHURCH	71	CHURCHES	NP	Improved Non-Profit	Non-Profit Improved	16,652	Institutional/Tax Exempt	\$ 1,498.68	\$ 46,592.22
					Totals				\$ 91,835.64	\$ 91,835.64