

PLAN NOT TO SCALE

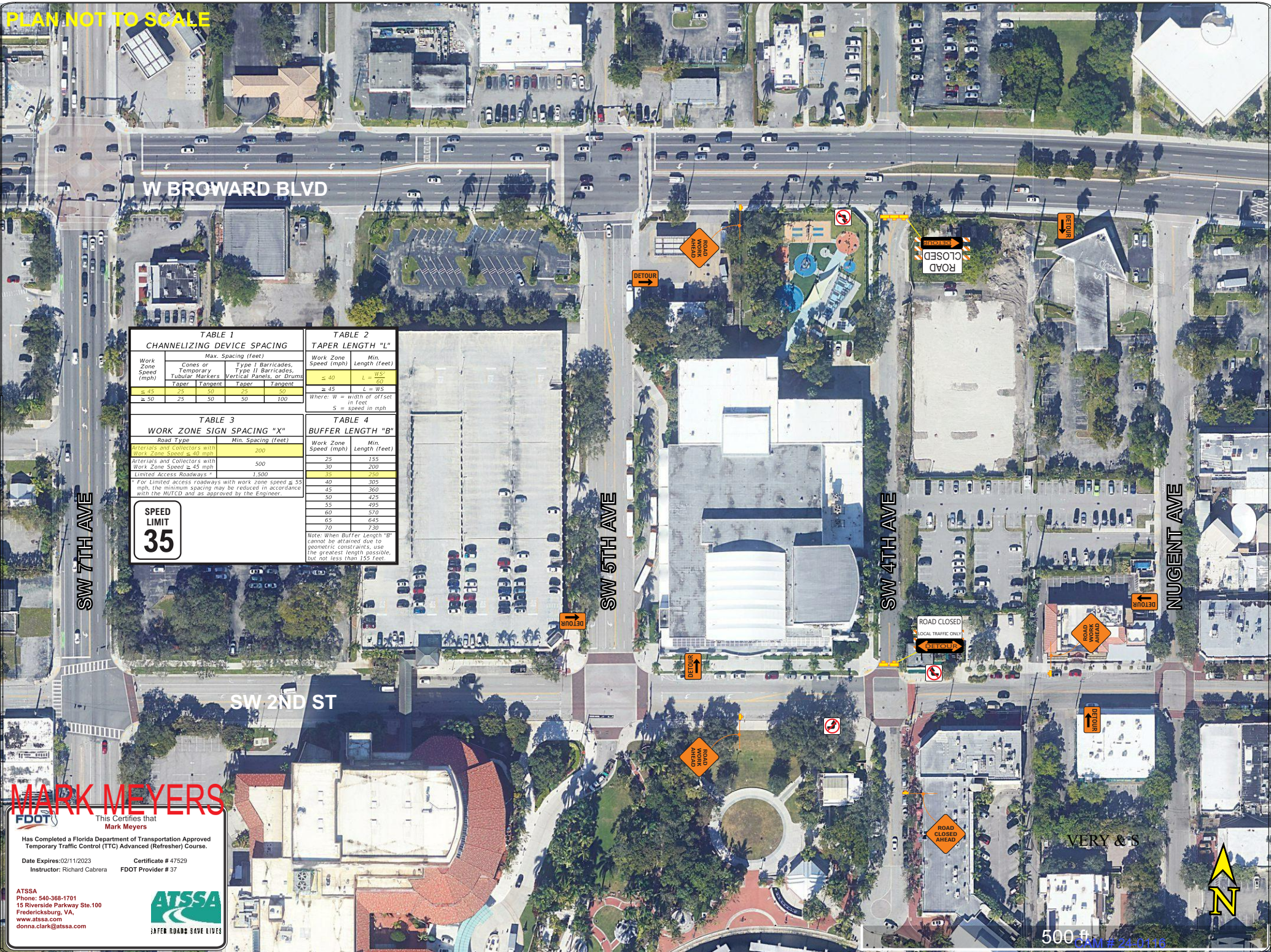


TABLE 1
CHANNELIZING DEVICE SPACING

Work Zone Speed (mph)	Max. Spacing (feet)			
	Cones or Temporary Tubular Markers	Type I Barricades, Vertical Panels, or Drums	Type II Barricades	Type III Barricades
≤ 45	25	50	50	100
≥ 45	25	50	50	100

TABLE 2
TAPER LENGTH "L"

Work Zone Speed (mph)	Min. Length (feet)
≤ 40	115
≥ 45	70

Where: W = width of offset in feet
S = speed in mph

TABLE 3
WORK ZONE SIGN SPACING "X"

Road Type	Min. Spacing (feet)
Arterials and Collectors with Work Zone Speed ≤ 45 mph	200
Arterials and Collectors with Work Zone Speed ≥ 45 mph	500
Limited Access Roadways *	1,500

* For limited access roadways with work zone speed ≥ 55 mph, the minimum spacing may be reduced in accordance with the MUTCD and as approved by the Engineer.

TABLE 4
BUFFER LENGTH "B"

Work Zone Speed (mph)	Min. Length (feet)
25	155
30	200
35	250
40	305
45	360
50	425
55	495
60	570
65	645
70	730

Note: When Buffer Length "B" cannot be attained due to geometric constraints, use the greatest length possible, but not less than 155 feet.

SPEED LIMIT
35

MARK MEYERS
FDOT

This Certifies that Mark Meyers
Has Completed a Florida Department of Transportation Approved Temporary Traffic Control (TTC) Advanced (Refresher) Course.
Date Expires: 02/11/2023 Certificate # 47529
Instructor: Richard Cabrera FDOT Provider # 37

ATSSA
Phone: 540-368-1701
15 Riverside Parkway Ste. 100
Fredericksburg, VA
www.atssa.com
donna.clark@atssa.com



DRAWN BY MM

MOT Plans

PROJECT NAME: MODS

SITE LOCATION: MUSEUM OF DISCO

Exhibit 3a
Page 1 of 4

500 ft
C&M # 24-0116



SHEET	TABLE OF CONTENTS
1	General Notes, TTC Tables
2	Definitions Temporary Traffic Control Devices Overhead Work Railroads Sight Distance Above Ground Hazard
3	Clear Zone Widths For Work Zones Superelevation Length Of Lane Closures Overweight/Oversize Vehicles Lane Widths High-Visibility Safety Apparel Speed Reduction Signing
4	Flagger Control Survey Work Zones Signs
5	Work Zone Sign Supports
6	Commonly Used Warning and Regulatory Signs In Work Zones
7	Manholes/Crosswalks/Joints Truck Mounted Attenuators Signals Channelizing Devices Channelizing Devices Consistency Advanced Warning Arrow Boards
8	Drop-Offs In Work Zones
9	Business Entrance Temporary Asphalt Separator
10	Channelizing Devices Notes Temporary Barrier Notes
11	Pavement Markings

GENERAL NOTES:

1. This Index contains information specific to the Federal and State guidelines and standards for the preparation of traffic control plans and for the execution of traffic control in work zones, for construction and maintenance operations and utility work on highways, roads and streets on the State Highway System. Certain requirements in this Index are based on the high volume nature of State Highways. For highways, roads and streets off the State Highway System, the local agency (City/County) having jurisdiction may adopt requirements based on the minimum requirements provided in the MUTCD.
2. Use this Index in accordance with the Plans and Indexes 102-601 through 102-680. Indexes 102-601 through 102-680 are Department-specific typical applications of commonly encountered situations. Adjust device location or number thereof as recommended by the Worksite Traffic Supervisor and approved by the Engineer. Devices include, but are not limited to, flaggers, portable temporary signals, signs, pavement markings, and channelizing devices. Comply with MUTCD or applicable Department criteria for any changes and document the reason for the change.
3. Except for emergencies, any road closure on State Highway System must comply with Section 335.15, F.S.

**TABLE 1
CHANNELIZING DEVICE SPACING**

Work Zone Speed (mph)	Max. Spacing (feet)			
	Cones or Temporary Tubular Markers		Type I Barricades, Type II Barricades, Vertical Panels, or Drums	
	Taper	Tangent	Taper	Tangent
≤ 45	25	50	25	50
≥ 50	25	50	50	100

**TABLE 2
TAPER LENGTH "L"**

Work Zone Speed (mph)	Min. Length (feet)
≤ 40	$L = \frac{WS^2}{60}$
≥ 45	$L = WS$

Where: W = width of offset in feet
S = speed in mph

**TABLE 3
WORK ZONE SIGN SPACING "X"**

Road Type	Min. Spacing (feet)
Arterials and Collectors with Work Zone Speed ≤ 40 mph	200
Arterials and Collectors with Work Zone Speed ≥ 45 mph	500
Limited Access Roadways *	1,500

* For limited access roadways with work zone speed ≤ 55 mph, the minimum spacing may be reduced in accordance with the MUTCD and as approved by the Engineer.

**TABLE 4
BUFFER LENGTH "B"**

Work Zone Speed (mph)	Min. Length (feet)
25	155
30	200
35	250
40	305
45	360
50	425
55	495
60	570
65	645
70	730

Note: When Buffer Length "B" cannot be attained due to geometric constraints, use the greatest length possible, but not less than 155 feet.

MARK MEYERS

 This Certifies that
Mark Meyers
 Has Completed a Florida Department of Transportation Approved
 Temporary Traffic Control (TTC) Advanced (Refresher) Course.
 Date Expires: 02/11/2023 Certificate # 47529
 Instructor: Richard Cabrera FDOT Provider # 37


 ATSSA
 Phone: 540-368-1701
 16 Riverside Parkway Ste. 100
 Fredericksburg, VA
 www.atssa.com
 donna.clark@atssa.com

SAFER ROADS SAVE LIVES

LAST REVISION	DESCRIPTION:
11/01/20	


**FY 2022-23
STANDARD PLANS**

GENERAL INFORMATION FOR TRAFFIC CONTROL THROUGH WORK ZONES

INDEX	SHEET
102-600	1 of 11

9/23/2021 2:40:07 PM

Notes for Figure 6H-20—Typical Application 20 Detour for a Closed Street

Guidance:

1. *This plan should be used for streets without posted route numbers.*
 2. *On multi-lane streets, Detour signs with an Advance Turn Arrow should be used in advance of a turn.*
- Option:
3. Flashing warning lights and/or flags may be used to call attention to the advance warning signs.
 4. Flashing warning lights may be used on Type 3 Barricades.
 5. Detour signs may be located on the far side of intersections. A Detour sign with an advance arrow may be used in advance of a turn.
 6. A Street Name sign may be mounted with the Detour sign. The Street Name sign may be either white on green or black on orange.

Standard:

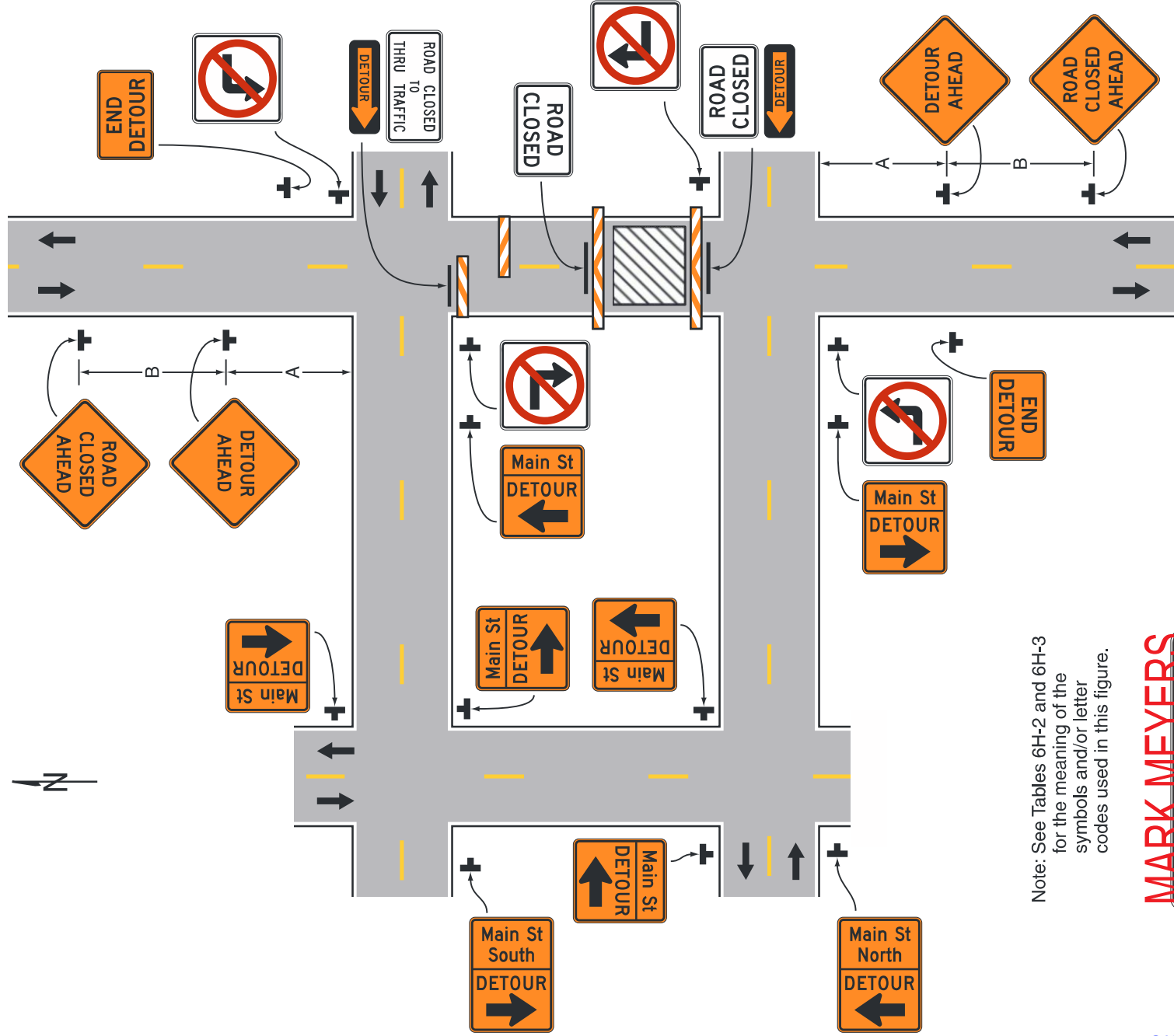
7. **When used, the Street Name sign shall be placed above the Detour sign.**

Support:

8. See Figure 6H-9 for the information for detouring a numbered highway.



Figure 6H-20. Detour for a Closed Street (TA-20)



Note: See Tables 6H-2 and 6H-3 for the meaning of the symbols and/or letter codes used in this figure.

MARK MEYERS
 FDOT
 This Certifies that
 Mark Meyers
 Has Completed a Florida Department of Transportation Approved
 Temporary Traffic Control (TTC) Advanced (Refresh) Course.
 Date Expires: 02/11/2023
 Instructor: Richard Calhoun
 Certificate # 47529
 FDOT Provider # 31

ATSSA
 PO Box 540-385-1701
 15 Riverside Parkway, Ste. 100
 Fredericksburg, VA
 www.atssa.com
 donna.clark@atssa.com

ATSSA
 SAFER. ROADER. SMOOTHER.

Typical Application 20