



**McLAUGHLIN ENGINEERING COMPANY**  
A DIVISION OF CONTROL POINT ASSOCIATES, INC. LB 8137

TRADITIONAL METHODS | MODERN APPROACHES  
1700 N.W. 64th STREET #400, FORT LAUDERDALE, FLORIDA 33309  
PHONE: (954) 763-7611 \* EMAIL: DDONAHOE@CPASURVEY.COM

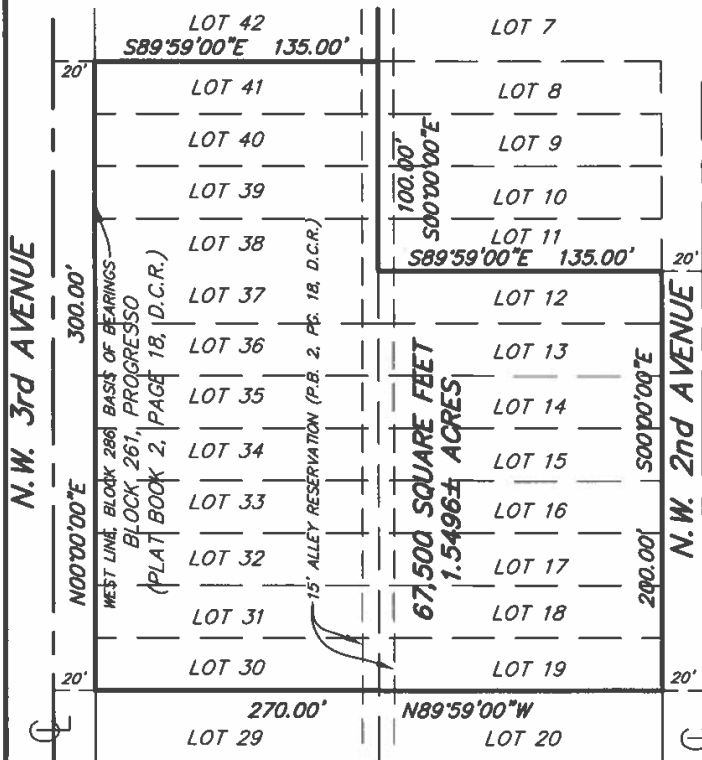
*MD O.K.*

**SKETCH AND DESCRIPTION  
TO ACCOMPANY REZONING PETITION  
FROM: "RMM-25" TO "NWRAC-MUe"**

**LEGAL DESCRIPTION:**

Lots 12 to 19 inclusive; AND Lots 30 to 41 inclusive, Block 261, PROGRESSO, according to the plat thereof, as recorded in Plat Book 2, Page 18, of the public records of Dade County, Florida.

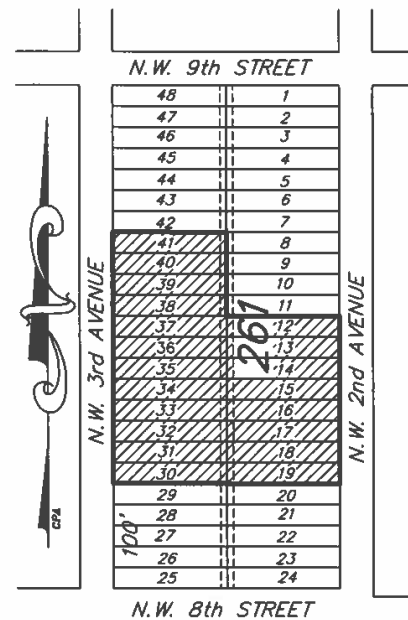
Said lands situate, lying and being in the City of Fort Lauderdale, Broward County, Florida and containing 67,500 square feet or 1.5496 acres more or less.



**NOTES:**

- 1) This sketch reflects all easements and rights-of-way, as shown on above referenced record plat(s). The subject property was not abstracted for other easements, road reservations or rights-of-way of record by McLaughlin Engineering Company, A Division of Control Point Associates, Inc.
- 2) Legal description prepared by McLaughlin Engineering Co., A Division of Control Point Associates, Inc.
- 3) This drawing is not valid unless sealed with an appropriate surveyors seal
- 4) THIS IS NOT A BOUNDARY SURVEY.
- 5) Bearings shown assume the West line of Block 261, as North 00°00'00" East.

**EXHIBIT "A"**



**SITE LAYOUT  
NOT TO SCALE**

**LEGEND:**

P.B. = PLAT BOOK

PG. = PAGE

D.C.R. = DADE COUNTY RECORDS

**SCALE 1" = 80'**

**CERTIFICATION**

Certified Correct. Dated at  
Fort Lauderdale, Florida this  
21st day of February, 2024.

McLAUGHLIN ENGINEERING COMPANY  
A DIVISION OF CONTROL POINT ASSOC. INC.

JERALD A. McLAUGHLIN  
Registered Land Surveyor No. LS5269  
State of Florida.

FIELD BOOK NO. \_\_\_\_\_

DRAWN BY: JMMjr

JOB ORDER NO. 15-230297-01

CHECKED BY: \_\_\_\_\_

C: \JMMjr/2024/15-230297-01 (SKETCH)