

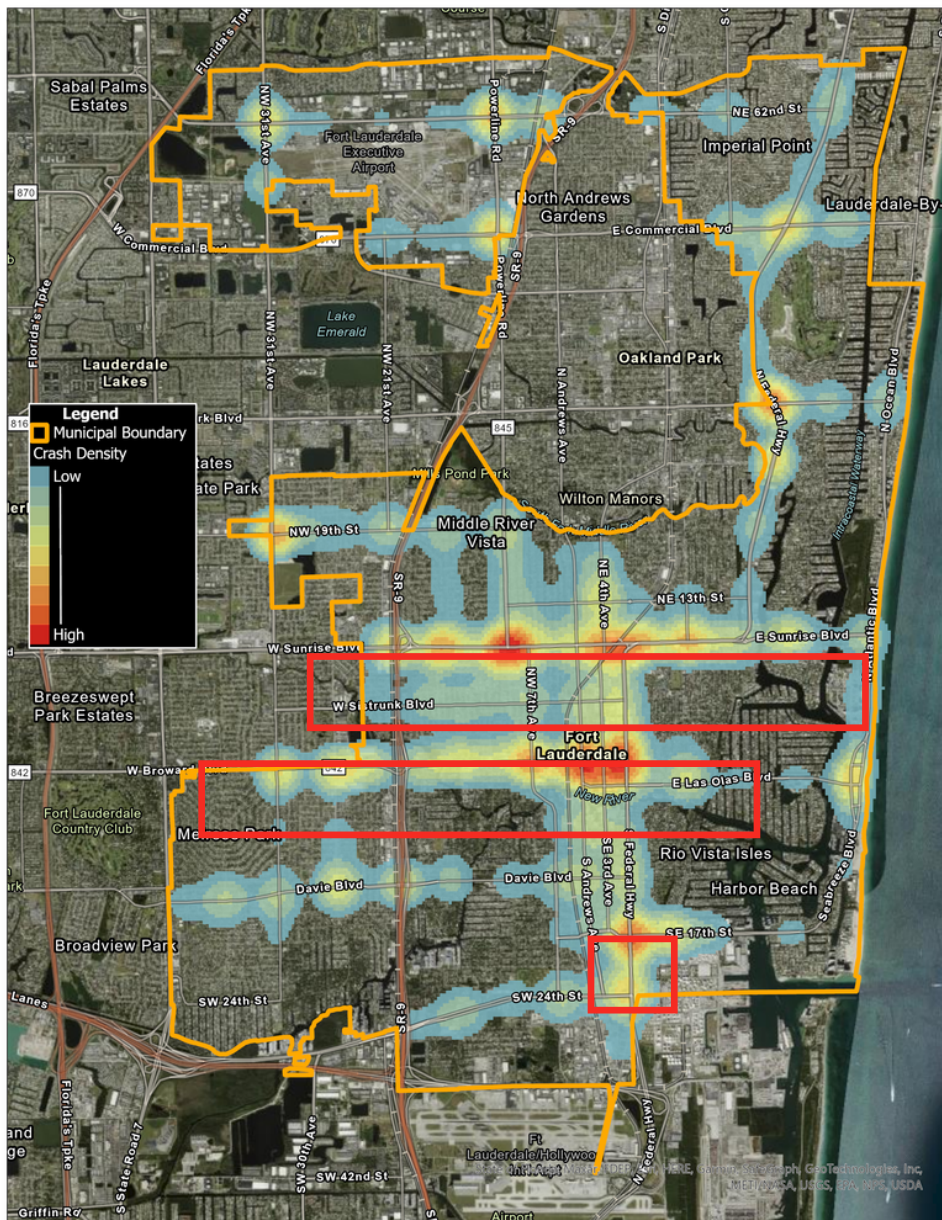


CITY OF FORT LAUDERDALE TRAFFIC CRASH ANALYSIS

Prepared By :
Wesley Acosta
Sr. Management Analyst
Fort Lauderdale Police Department

The following analysis is based on crash data obtained from Signal 4 Analytics (S4Analytics (www.signal4analytics.com) which is a system developed by the University of Florida and funded through the state of Florida. Data from this system is provided by Florida Department of Highway Safety and Motor Vehicles (DHSMV).

According to FLDHSMV data, a total of 35,296 crashes occurred within the municipal boundaries of the City of Fort Lauderdale between 01/01/2019 and 7/31/2022. Of these, 26,700 crashes could be mapped and 8,596 could not due to insufficient geographical data. The map below illustrates the crash density of these crashes. The highest densities of crashes occur along Sunrise Boulevard, Broward Boulevard, ¹ and the intersection of SE 17th St and Federal Highway.



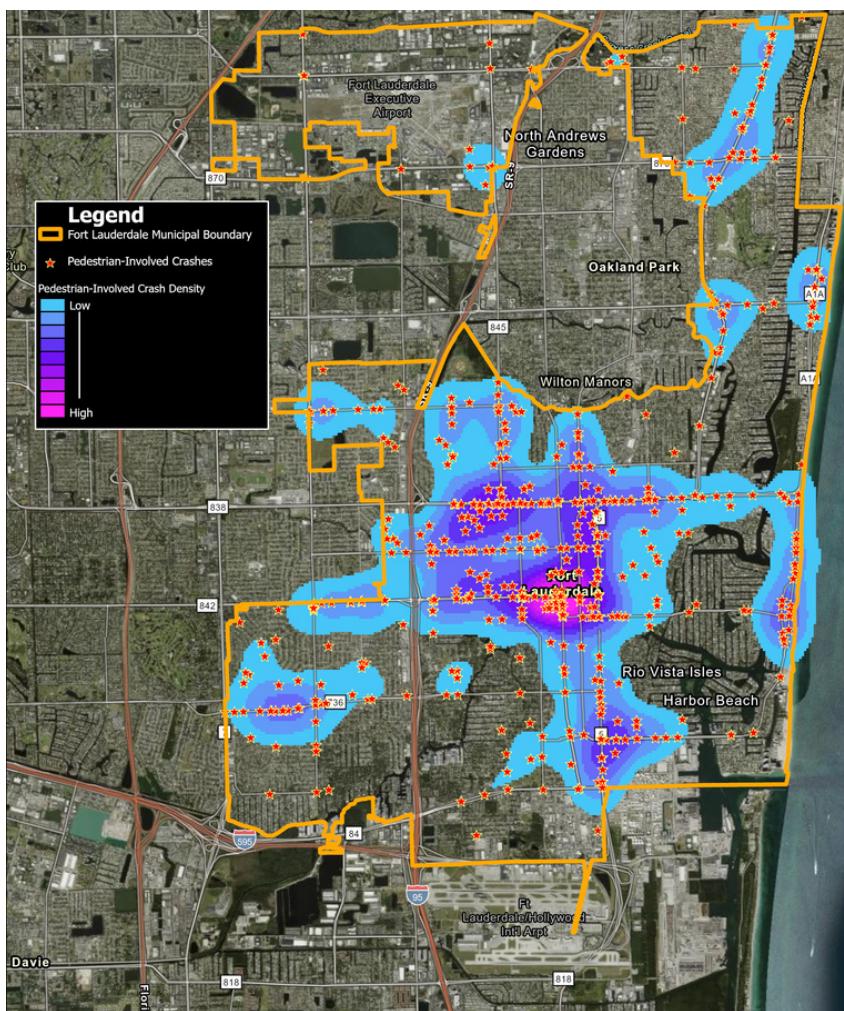
1. Fort Lauderdale Police Department responded to the scene of crash.

According to Broward Metropolitan Planning Organization (MPO) data, the average daily traffic along Sunrise Boulevard between the I-95 ramp and the split at the intersection of NE 19th Avenue (Gateway Shopping Center) is an estimated 50,300 vehicles. The estimated average daily traffic along Broward Boulevard from the I-95 ramp to the intersection of North Federal Highway is 46,750. These two stretches are one of the most commuted in the City if not the most commuted. Additionally, an estimated 100,000 vehicles cross the intersection of SE 17th Street and North Federal Highway in any given day.

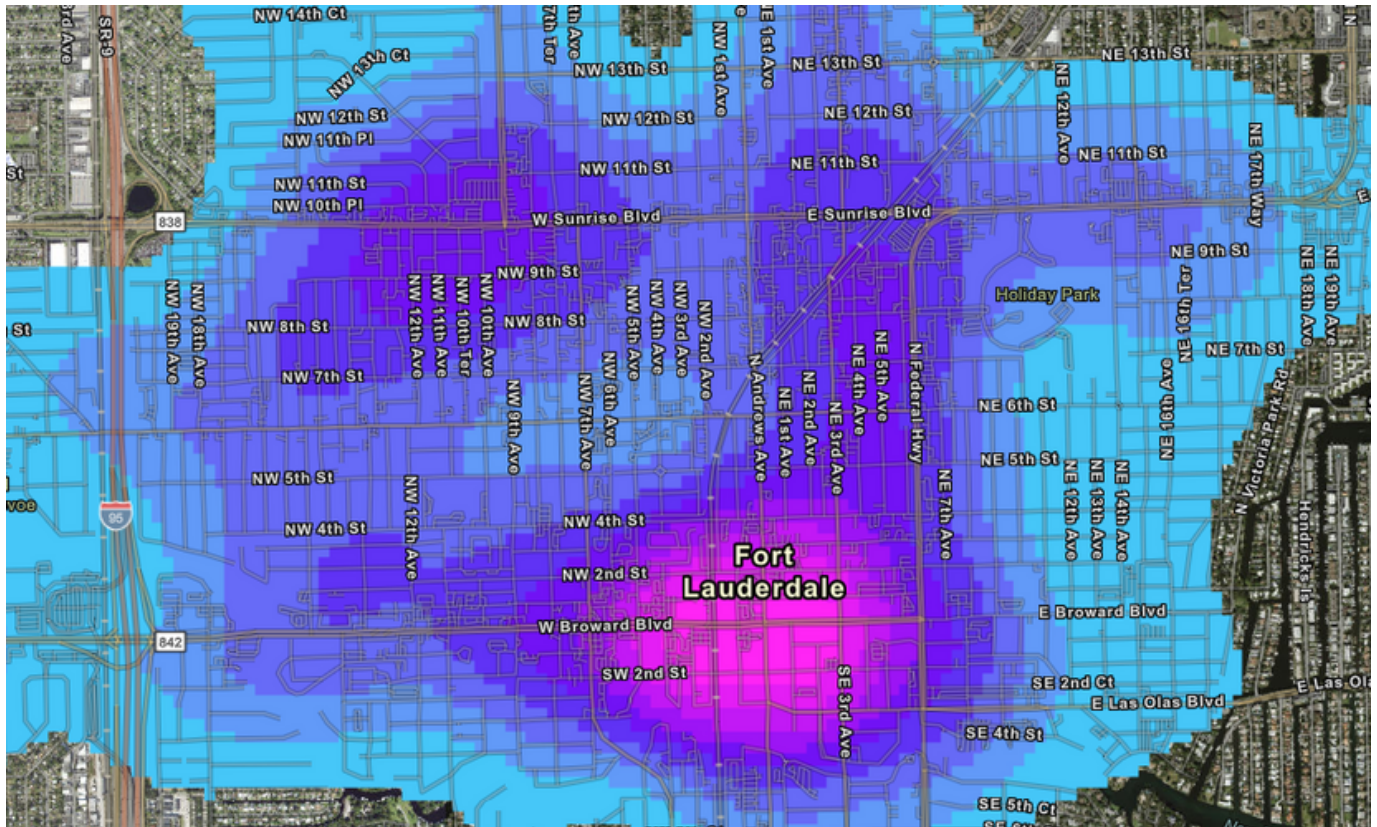
An estimated 2,343 traffic crashes occurred along the Sunrise Boulevard stretch referred to previously. Of these, 52 involved pedestrians. Along the Broward Boulevard stretch there were 1,323 crashes and 44 of these involved pedestrians. An estimated 218 crashes occurred at or near the intersection of SE 17th Street and North Federal Highway. Of these, four involved pedestrians.

Pedestrian-Involved Crashes

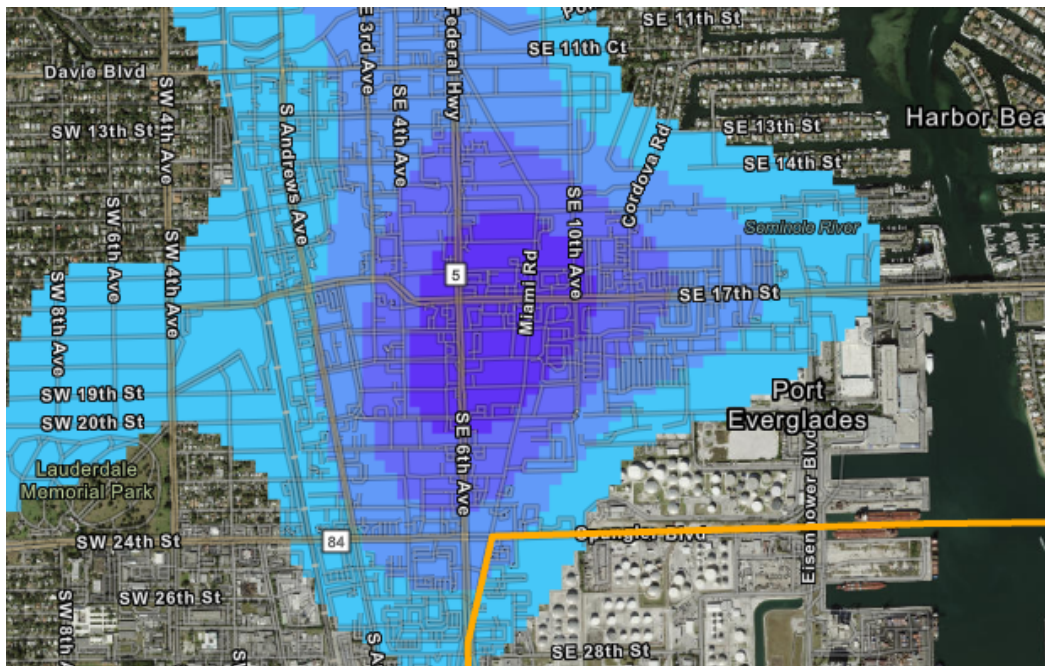
Between 1/1/2019 and 7/31/2022, a total of 810 crashes involving pedestrians occurred inside the City of Fort Lauderdale! Of these 810 crashes, only 610 could be mapped inside the city due to insufficient geographical data. The map below illustrates the crash density as well as the locations of these crashes.



The highest density of pedestrian-involved crashes occurred along Broward Boulevard between NE 4th St and the New River and North Federal Highway and NW 7th Avenue. The Sunrise Boulevard corridor between NW 18th Avenue and NE 17th Way also have a significant amount of crash density.



The intersection of SE 17th Street and North Federal Highway also has a higher density of pedestrian-involved crashes.



A density-based cluster analysis was utilized to identify intersections with a high rate of crashes. The analysis tool counted all incidents within 150 feet of the center point of the intersection and only identified clusters containing more than 150 crashes over a specified period (January 1, 2019 through July 31, 2022).

The intersection of State Road 9 (I-95) and Davie Boulevard had the highest total (732) and one of the lowest rates of injuries reported (81.6% of drivers or occupants were not injured). There was only one (1) pedestrian involved crash reported at this intersection. Inversely, the intersection of W. Broward Boulevard and NW 7th Avenue had 152 crashes, however, it had the third highest rate of injuries (31.6%) and the highest number of pedestrian-involved crashes (10). In 9 of those crashes, the pedestrian was either injured or killed.

The following chart and map illustrate the totals and the locations on the map.

Map ID	Intersection	Number of Crashes	No Injury	% Not injured	% Injured (possibly or injured)	Possible Injury	Non-Incapacitating Injury	Incapacitating Injury	Fatality	Non Traffic Fatality	Pedestrian Involved Total	Pedestrians Injured/Fatality
A	NW 62nd St & NW 31st Ave	219	156	71.2%	28.8%	34	25	2	1	1	2	2
B	NW 62nd St & Powerline Rd	431	350	81.2%	18.8%	50	24	7	0	0	1	1
C	W Commercial Blvd & Powerline Rd	635	523	82.4%	17.6%	61	44	6	1	0	4	4
D	E Commercial Blvd & N Federal Hwy	166	117	70.5%	29.5%	36	9	3	1	0	1	1
E	N Federal Hwy & E Oakland Park Blvd	239	189	79.1%	20.9%	34	11	5	0	0	1	1
F	NE 26th St & N Federal Hwy	197	143	72.6%	27.4%	39	14	1	0	0	2	1
G	E Sunrise Blvd & Bayview Dr	242	180	74.4%	25.6%	37	19	5	1	0	6	6
H	E Sunrise Blvd & NE 15th Ave	156	111	71.2%	28.8%	30	13	2	0	0	2	1
I	E Sunrise Blvd & Federal Hwy (NE 7th Ave)	232	180	77.6%	22.4%	32	16	2	2	0	3	3
J	W Sunrise Blvd & NW 9th Ave	222	168	75.7%	24.3%	38	15	1	0	0	3	3
K	W Sunrise Blvd & NW 15th Ave	172	124	72.1%	27.9%	29	16	2	1	0	5	4
L	SR-9 & W Sunrise Blvd	569	459	80.7%	19.3%	56	50	3	1	0	0	0
M	NW 31st Ave & NW 19th St	281	179	63.7%	36.3%	54	47	1	0	0	3	2
N	W Broward Blvd & SW 31st Ave	167	116	69.5%	30.5%	38	11	1	1	0	2	2
O	W Broward Blvd & SW 27th Ave	187	126	67.4%	32.6%	46	11	3	1	0	6	5
P	W Broward Blvd & SW 9th Ave	527	447	84.8%	15.2%	50	30	0	0	0	0	0
Q	W Broward Blvd & NW 7th Ave	152	104	68.4%	31.6%	27	15	5	1	0	10	9
R	E Broward Blvd & S Federal Hwy	215	172	80.0%	20.0%	29	11	2	0	1	6	3
S	SR-9 & Davie Blvd	732	597	81.6%	18.4%	81	47	4	3	0	1	1
T	S Federal Hwy & SE 17th St	235	195	83.0%	17.0%	29	11	0	0	0	4	3

Density-based Clustering Analysis of Traffic Crashes

