

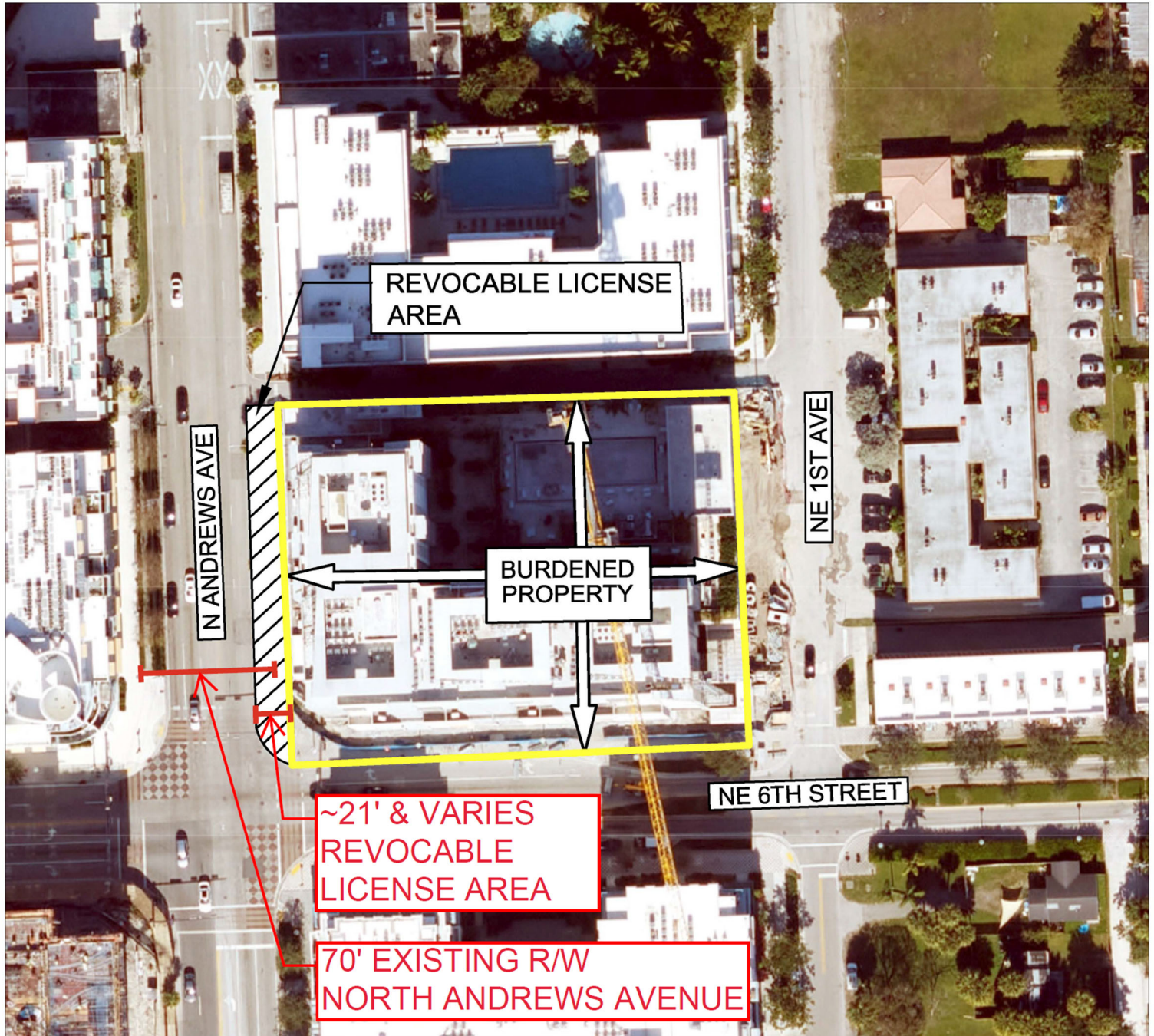
## LEGEND:



= REVOCABLE LICENSE AREA



= BURDENED PROPERTY



The Tri-Party RLA/AARLA for this project includes improvements to County right-of-way including the installation of landscaping, pavers, and irrigation improvements for approximately 190 LF abutting the west property line of the project on the east side of North Andrews Avenue. The improvement area is approximately 3,843 SF.

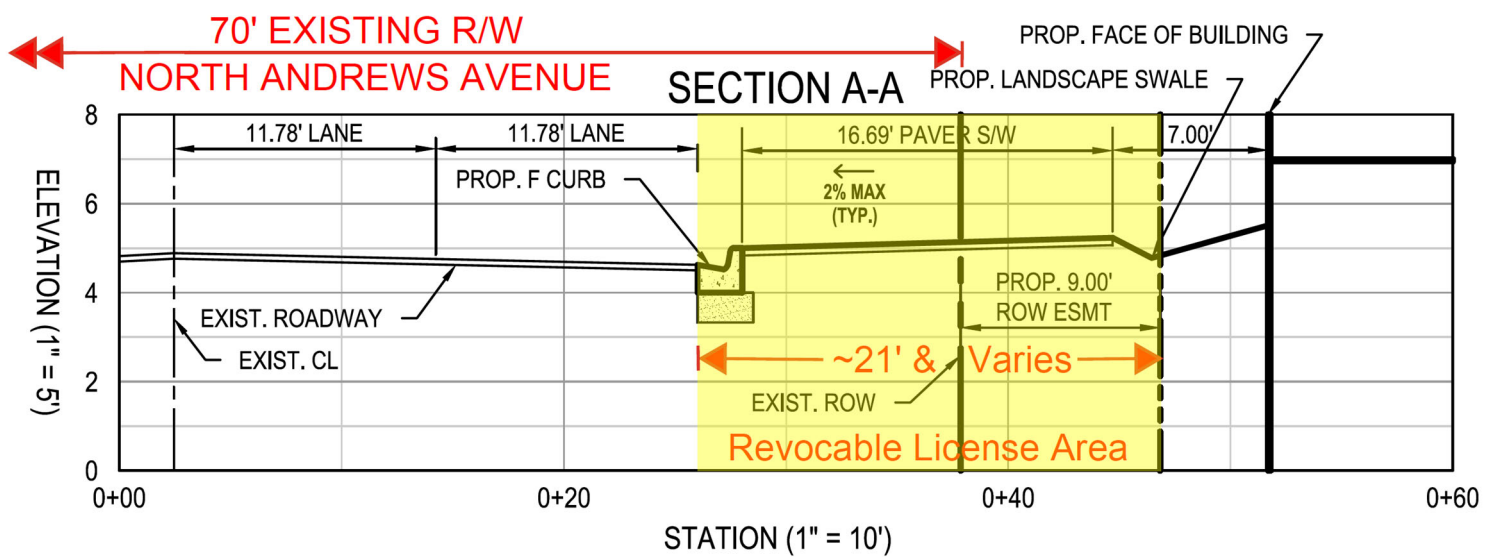
These improvements will be installed under approved County Permit #220526001, a copy of which is on file with the Development Services Department and can be made available upon request.

# LICENSE AREA

CAM#25-1197

Exhibit 2

Page 1 of 2



# TYPICAL SECTION

North Andrews Avenue (Looking North)